

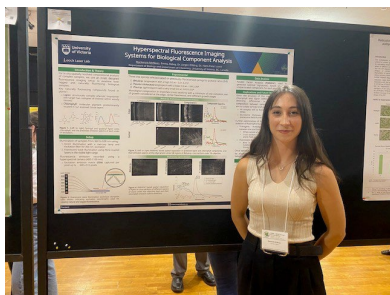


UVic Forest Biology Update

Fall 2025

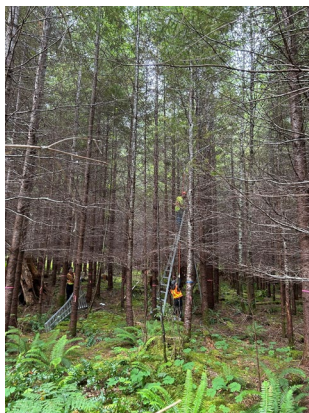
August 2025 CSPB Annual Meeting in Halifax, NS!

Our UVic FORB members had a great time attending and presenting at the August 2025 Canadian Society of Plant Biologists Annual General Meeting in Halifax, NS!



Swiss Needle Cast Sampling with the Ehltig Lab!

Another Swiss Needle Cast sampling season wrapped up in the Ehltig group in July. This is probably the last year these trees are sampled because they just get too tall! On the way back from field work we stopped at a few big trees. Find the grad students!



Recent Publications

Houston, S., Liu, J., Cruickshank, M., Zamany, A., Leal, I., and Filipescu, C. 2025. **Development and Validation of Molecular Assays for Detection of Root- and Butt-Rot Diseases in Western Redcedar.** *PhytoFrontiers* 0:ja. <https://doi.org/10.1094/PHYTOFR-04-25-0042-R>

Dawson, A., et al. including Lacourse, T. 2025. **Holocene land cover change in North America: Continental trends, regional drivers, and implications for vegetation-atmosphere feedbacks.** *Climate of the Past* 21: 2031-2060. <https://doi.org/10.5194/cp-21-2031-2025>

Friele, K., Lacourse, T., and Marr, K. 2025. **Evaluating putative *Dryas ajanensis* Juzepczuk ssp. *beringensis* Jurtzev ' *Dryas integrifolia* Vahl hybrids using leaf morphometrics.** *Botany* 103: 1-12. <https://cdnsiencepub.com/doi/10.1139/cjb-2025-0005>

Kranabetter, J.M., Innes, F., Norris, C.E., Philpott, T.J., Lacourse, T., and Hawkins, B.J. 2025. **Diverging soil peroxidase activity under ectomycorrhizal versus arbuscular mycorrhizal conifers with increasing C:N and exchangeable manganese.** *Soil Biology and Biochemistry* 209: 109913. <https://www.sciencedirect.com/science/article/abs/pii/S003807172500207X>

2025 FORB Welcome Gathering

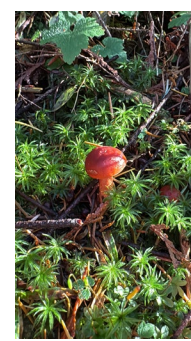
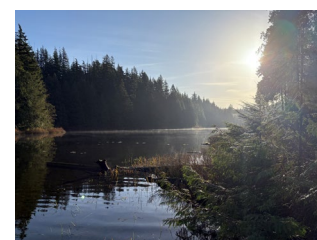
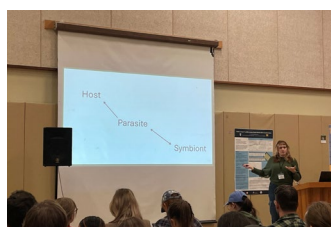
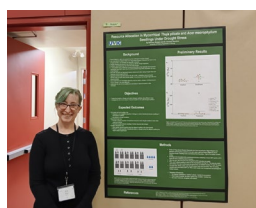
We had a wonderfully sunny Welcome Gathering outside Cunningham Building! Thanks to all those that were able to make it out to welcome our new members and start off the new term in a positive way!



Eco Evo Conference – November 2025!

The annual Eco-Evo retreat was held on November 10 - 12, 2025, at Loon Lake in Maple Ridge, BC. Graduate students, post-docs, and early career researchers who are interested in evolution or ecology had a chance to share their research in a fun, informal setting.

*Submitted by MSc Student Bethany Robson
Photos by: Bethany Robson, David Furlonger,
Maxine Angeley & Michael Clark*



New FORB Members



Joel Bourgeois
Dr. Perlman
MSc



Liam Hoogewerf
Drs. Ehlting/Goshal
MSc



Nadja Burkart
Dr. Ehlting
MSc



Agathe Ricou
Dr. Constabel
Research Assistant



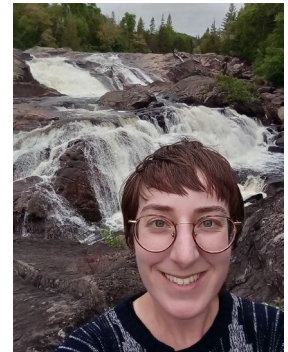
Steph Wardell
Dr. Hawkins
Honours Student



Randi Church
Dr. Ehlting
Research Assistant



Gemma Tomberli
Drs. Ehlting/Perlman
Directed Study/
Research Asst.



Kateri Lawson
Dr. Hawkins
Directed Study



Aimee DeLong
Dr. Constabel
Research Assistant



Beckett Finch
Dr. Hawkins
Research Assistant



Erin Grogan
Dr. Lacourse
Honours Student

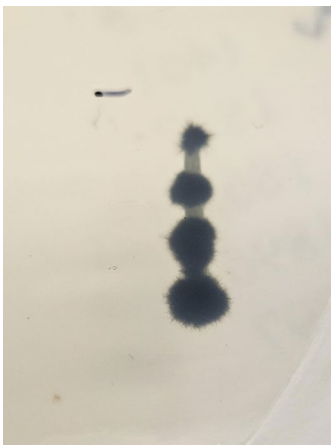
How do Fungi Support Tree Health in Disease Conditions?

Plants and fungi have a complex relationship - while a significant proportion of fungal species can cause disease, many can confer benefits to their host plant by mitigating abiotic stresses, producing antimicrobial compounds, or competitively excluding pathogens.

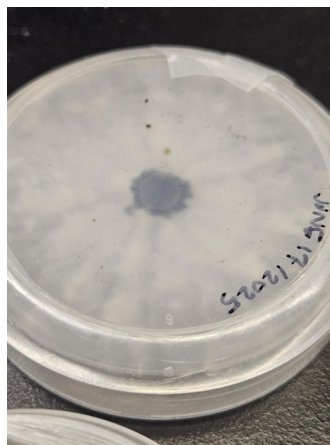
Eve's project examines the relationship between fungal symbionts living within Douglas fir needles and response to Swiss Needle Cast, an emerging tree disease. One method she is using is culturing, in which individual fungal colonies are isolated from the needle on nutrient media. Once isolated, colonies can then be identified using molecular methods. Shown here are three cultures grown from her samples.

For images of the fruiting body of *P. nigrella* please see the following webpage: <https://ultimate-mushroom.com/images/pseudoplectania-nigrella-3.jpg>

Submitted by MSc Student Eve Kenny



Nothophaeocryptopus gaeumannii – this species is the causal agent of Swiss Needle Cast



Coleophoma sp. – this is a prolific genus of fungi that grow in several host species



Pseudoplectania nigrella – this is a saprobe whose fruiting body is a tomentose black cup. Eve was surprised to find it living within another organism as it typically grows on decaying material!

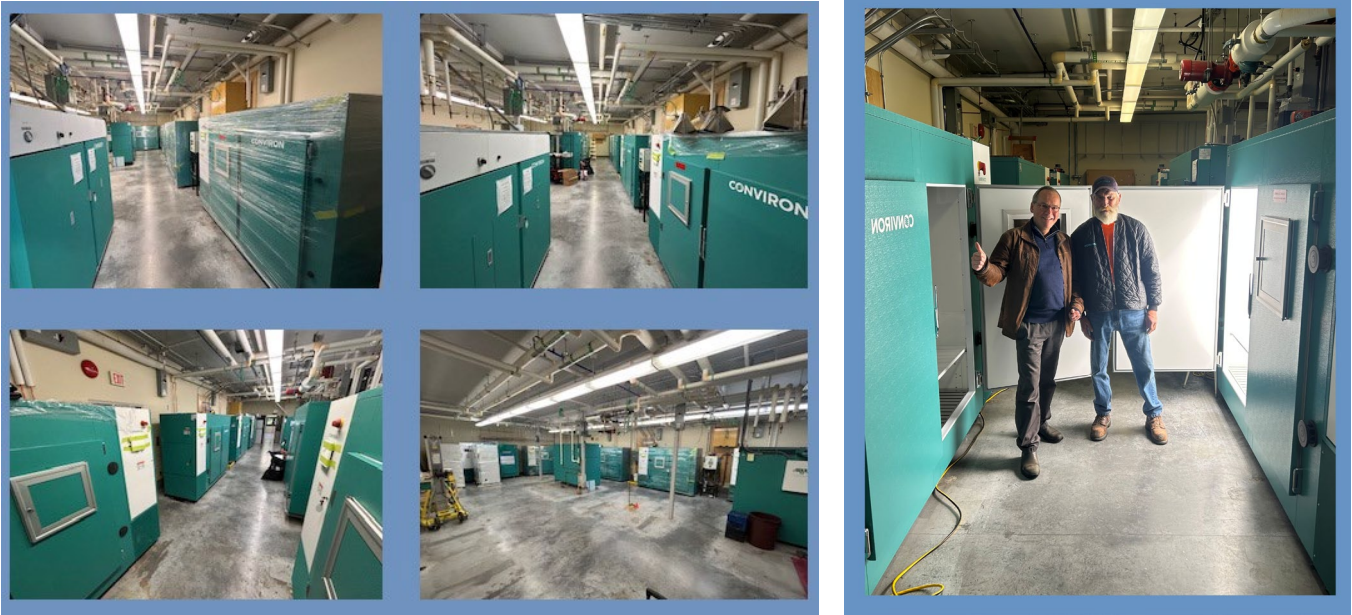
Science Speaker's Bureau Talk from Dr. Hawkins!

On October 23, 2025 Dr. Barbara Hawkins spoke to a group of 40 students at Journey Middle School in Sooke, BC. This was part of the Science Speaker's Bureau and her talk focused on 'Forest Food Webs and Plant Evolution'.



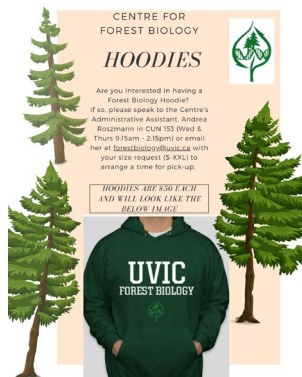
Facilities Upgrade!

It's happening! As part of our CFI funded Environmental Simulation Facility upgrade in the Bev Glover complex, we are excited to be receiving and installing our new Growth Chambers! Thanks to all the hard work and progress made over this past weekend we are looking forward to having things up and running by the end of the year!



FORB Hoodies!

FORB Hoodies are still for sale at \$50 each. If you would like one please pop by the FORB Office (CUN 153) with cash and pick one up! Office hours are Wed or Thurs 9:30am – 2:00pm



Compiled by Andrea Roszmann,
Administrative Assistant, FORB