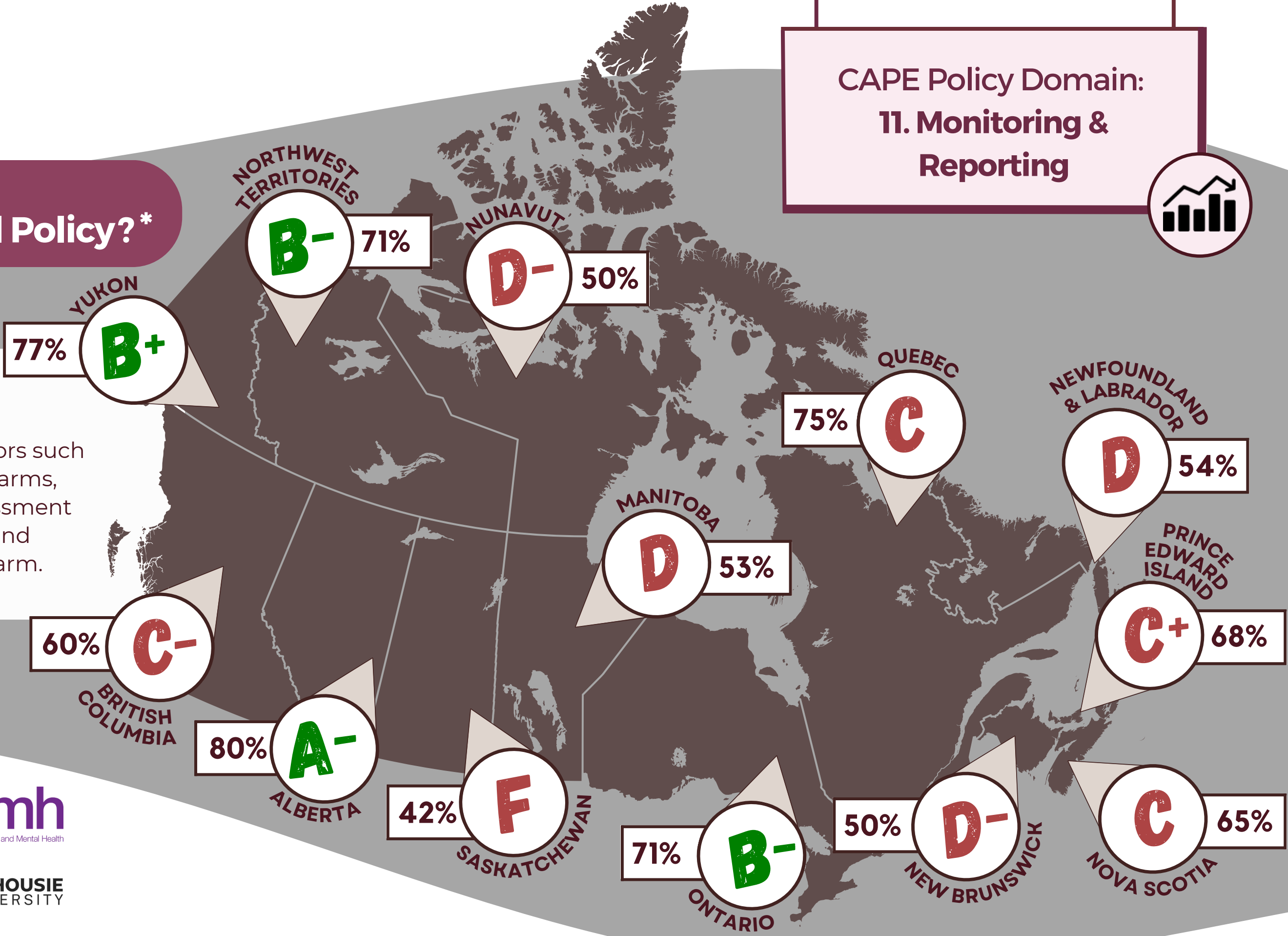


**How are Canadian Provinces and Territories Performing on Alcohol Policy?\***

**Why is this important?**  
Monitoring and reporting of alcohol indicators such as consumption, drinking patterns, health harms, and policy changes allows for ongoing assessment that can inform approaches, interventions, and resource requirements to address alcohol harm.



Canadian Institute for Substance Use Research  
Institut canadien de recherche sur l'usage de substances



\* Based on 2022 Policy Data