



**University
of Victoria**
Centre on Aging

Annual Report
July 1, 2005 – June 30, 2006

TABLE OF CONTENTS

INTRODUCTION.....	4
Period Covered by this Report	4
Mission and Objectives of the Centre	4
Message from the Director	5
Research Focus	7
STRUCTURE AND MANAGEMENT	8
Staff	8
Advisory Board	8
University of Victoria Research Affiliates	9
External Research Affiliates	10
Friends of the Centre	11
RESOURCES.....	12
Budget	12
Space	12
Satellite Office.....	12
Survey Research Centre.....	12
RESEARCH	14
Michael Smith Foundation for Health Research Infrastructure Grant	14
Research Projects	16
Publications	21
Collaboration and Networking	21
KNOWLEDGE DISSEMINATION AND TRANSLATION.....	24
Presentations at Meetings of Professional Associations	24
Conferences.....	24
Community Forum.....	25
Informal Lecture Series.....	25
Research Snapshots	27

Valued Elder Recognition Awards and International Day of the Older Person Lecture	28
Public Lectures and Media Contacts	28
Centre Bulletin	28
Website	28
 COMMUNITY INVOLVEMENT AND RECOGNITION	 29
 TRAINING	 29
Formal Programs.....	30
Postdoctoral Fellows	30
Student Employment.....	30
 APPENDICES	
Appendix A Who you will find housed at the Centre on Aging's Offices	31
Appendix B New and Continuing Research Grants.....	32
Appendix C Research Grants Completed in 2005-2006	41
Appendix D Published Articles, Books, Chapters, Monographs	44
Appendix E Presentations	49

Period Covered by this Report

This is the second Annual Report of the Centre on Aging. This report covers activity from July 1, 2005 to June 30, 2006.

Mission and Objectives of the Centre

The Centre on Aging is a multidisciplinary research centre established at the University of Victoria to advance knowledge in the field of aging based on the twin standards of scientific rigor and applied relevance. Our overall goals are to contribute to improving the health and quality of life of an increasingly diverse population of older adults, and to assist their families, health care providers, and governments in meeting the challenges and potentials of an aging society. In order to achieve these broad goals, the Centre has as its specific objectives:

- To add to the body of knowledge on aging by stimulating and conducting rigorous basic and applied research.
- To provide a focus and direction to the University's and region's research activities in the area of aging.
- To facilitate communication and collaboration among scholars, practitioners, government officials, and older adults.
- To contribute to the training of skilled research personnel.
- To disseminate knowledge on aging to scientists, practitioners, and the public.
- To promote the translation of research findings into interventions, services, products, and policies relevant to older adults.

Message from the Director

This has been a transition year for me and for the Centre – this was my last year in the role of Director, and as of July 1, 2006 Elaine Gallagher (Professor of Nursing) will provide new leadership for the unit. Given this transition, I have chosen to provide an overview of the past four years rather than focusing only on the current academic year.

To set the context, I went back to documents from 2002 where I had noted several goals that might be used to guide further development of the Centre. It is perhaps worthwhile to examine how we have done in the past four years in pursuit of these objectives.

1. *The Canadian context for research has changed significantly in recent years. There has been increasing political recognition of the importance of research on aging, particularly with respect to health and aging. In addition, there is more financial support available for large-scale multidisciplinary projects and personnel awards. The Centre needs to take advantage of these opportunities. (2002).*

In the past four years, we have made excellent progress in taking advantage of the various funding opportunities available. First and foremost, faculty members have been very successful in obtaining external grant funds from a variety of sources.

In addition to operating funds, the Centre has taken advantage of opportunities provided by the Michael Smith Foundation for Health Research (MSFHR). In 2003, the Centre received a \$1,000,000 four-year Research Unit Infrastructure award from MSFHR. The purpose of this program is to enhance BC's health-related research capacity by providing funds to units to enhance their productivity and competitiveness for national and international funding. The grant has been used to fund research support personnel (secretary, community research coordinator, research assistants) and release time for faculty, as well as supplies and the like. This support has contributed greatly to the increase in research productivity noted above.

Finally, faculty at the Centre have competed successfully for personnel awards. Drs. Ryan Rhodes, Paul Zehr, and Kelli Stajduhar received Michael Smith Foundation for Health Research Scholar Awards. Dr. Stajduhar was also the recipient of a CIHR New Investigator Award.

2. *Current core Centre faculty include a geographer, two psychologists and two sociologists. All of these individuals have expertise in aging and health, broadly defined. The Centre faculty are part of a larger group of UVic faculty with expertise in the psychosocial aspects of health and aging. I believe that we can build on these strengths. I will pursue further development of faculty expertise in the psychosocial aspects of health and aging both within the Centre and across the University. (2002)*

The faculty complement of the Centre has seen some expansion. A particular success was the hiring of Dr. Kelli Stajduhar (Assistant Professor of Nursing) as a core member of the Centre. Other faculty members with interests in aging-related research have been hired by other departments as part of ongoing faculty renewal and expansion. Last year, we were also fortunate to have Dr. Elaine Gallagher (Professor of Nursing) join us as Associate Director of the Centre. Over the past 4 years, the complement of faculty affiliated with



Dr. David Hultsch

As usual, faculty and students affiliated with the Centre have had a productive year.

the Centre increased from 34 to 43. New faculty are working with the Centre from the School of Physical Education, Department of Electrical and Computer Engineering, and the Island Medical Program, as well as from the well-represented faculties of Social Sciences and Human and Social Development.

3. Members of the University community have committed to developing a broad research initiative focused on health. In my view, the Centre can and should be a major contributor to this effort. The Centre has also been significantly involved in conducting research with community partners. I believe we should attempt to expand these links. (2002).

The MSFHR infrastructure grant provided us with a significant opportunity to increase our links with community researchers. Funds from the grant were used to hire a Health Research and Community Liaison Officer (Phyllis McGee). A specific goal was to facilitate collaborative research with the Vancouver Island Health Authority. Under Phyllis' leadership, the scope of research with community partners has increased substantially from already significant levels. Members of the Centre have continued to participate in the planning process of the University's Health Research Initiative.

In 2002, the Centre opened its satellite office in Ladner, BC under the leadership of Dr. Patrick McGowan. This office has expended significantly and is fully funded through research grants received by Dr. McGowan. The satellite office supports an extensive program of community-based research focused on patient self-management of chronic diseases.

4. The Centre has established itself as major source for disseminating the results of research on aging to members of the local professional community and the general public. The well-attended series of lectures and workshops that make up the annual Community Forum on Aging is an example of a mechanism that has been effective. Similarly, the Friends of the Centre have been instrumental in making research results accessible to the public. Other activities such as the VERA awards are designed to recognize the contribution of seniors to our community. These types of activities are an important part of the Centre's role. (2002).

We have continued our activities focused on disseminating the results of research on aging to various audiences. Feature events such as the International Day of the Older Person lecture and Community Forum have continued on a yearly basis. In September 2005, the Centre co-hosted (under the leadership of Dr. Patrick McGowan) an international conference on patient self-management. More recently, we have used support from the MSFHR infrastructure grant and the BC Network for Aging Research to support a series of workshops focused on collaborative research between university- and community-based researchers.

5. The Centre plays an important role in training students. The Centre is already an active participant in the research training of graduate students and postdoctoral fellows. Success in attracting training grant funds to support such students will greatly expand this role. In addition, the Centre should play a significant role in the Island Medical Program currently under development. (2002).

Efforts to obtain funding from CIHR to support a graduate training program focused on research in health and cognition were unsuccessful. In addition, links with the Island Medical Program have been slow to develop as that faculty has been focused on launching its teaching curriculum. The Centre continues to contribute significantly to the research training of students through their

participation in the various research projects conducted by centre faculty. This past year, Laura Funk organized a series of workshops focused on professional development issues of interest to a wide range of students. This series was very well attended.

In addition to the above, other highlights of the past four years include, (a) successful completion of a 5-year review of the Centre and extension of its mandate for an additional 5 years; (b) the opening and ongoing development of the Survey Research Centre; (c) participation of the Centre in the development and initiation of the BC Network for Aging Research; and (d) launch of a new scholarship fund for graduate students in aging (the Neena Chappell Scholarship Fund) based on an initial gift from the Victoria Gerontology Association.

This brief review suggests we have made considerable progress in the continued development of the Centre as a centre of excellent research on aging. As always, more remains to be done in achieving these goals, and new challenges and opportunities will arise. Our new Director, Elaine Gallagher, brings a wide array of skills to the task and is well positioned to lead the Centre forward into the future.

I wish all of you the best, and look forward to continuing to participate in the activities of the Centre.

Research Focus

The research conducted at the Centre is informed by multiple theoretical perspectives and uses multiple methodological approaches. Much of our work is rooted in a broad orientation to health that includes attention to the social, psychological, environmental, and cultural contexts in which people live, as well as the institutions (e.g., health delivery systems) responsible for the health of aging populations. Although our focus is on aging, we recognize that healthy aging is a life-long process that requires attention to developmental changes that occur across the life span rather than simply an emphasis on late life. Within this general framework, we focus particularly on the clinical, population health, and health services areas of health research. Issues being addressed include: (a) examination of health behaviors and outcomes as a function of different cultural, social, and living conditions; (b) the early diagnosis of neurological and other disorders; (c) the impact of cognitive impairment on specific areas of everyday functioning such as driving and financial management; (d) the development and assessment of strategies to promote healthy functioning; (e) development and assessment of strategies for coping with and caring for specific health conditions; (f) how to promote and ensure healthy communities; and (g) how to provide health care that is appropriate, accessible, and affordable.

Efforts to address these areas of aging research are necessarily multidisciplinary, and research at the Centre draws on faculty from multiple university departments, including anthropology, child and youth care, economics, geography, history, nursing, physical education, philosophy, psychology, social work, and sociology, as well as researchers in the community. According to Dr. Elaine Gallagher, Associate Director of the Centre for the 2005-2006 year, the Centre is well-poised to have a significant impact on policy and practice



Although our focus is on aging, we recognize that healthy aging is a life-long process that requires attention to developmental changes that occur across the life span rather than simply an emphasis on late life.

issues arising from the research findings. In her new role as Director she will be promoting opportunities for improved linkages with clinicians and local, provincial and Federal policy-makers. “My goal is to continue to support the fine work being done by the Centre affiliates and to strengthen the ties to the broader community.”

STRUCTURE AND MANAGEMENT

Staff

The Director of the Centre is responsible for the overall management and direction of the Centre. The Director reports to the Vice-President, Research, of the University.

Continuing staff funded by the base budget of the Centre consist of:

- full-time Administrative Coordinator (Lois Edgar)
- full-time Secretary (Lindsay Cassie)
- full-time Research Coordinator (Julie Shaver)

Five non-continuing positions have been funded for the period July, 2003 to June, 2008 through a grant from the Research Unit Infrastructure Program of the Michael Smith Foundation for Health Research. These positions consist of:

- half-time Project Administrator (Arlene Senft)
- two half-time Research Assistants (Reba Chaplin and Shelly Waskiewich)
- full-time Project Secretary (Anita Jessop)
- full-time Health Research and Community Liaison Officer (Phyllis McGee)

The Survey Research Centre, which is administered by the Centre, has a separate cost recovery budget that funds a full-time Manager (Tom Ackerley).

An organizational chart of who you will find in the Centre on Aging's office space in Sedgewick A Wing and in the Satellite office in Ladner is found in Appendix A.



Advisory Board

The Director receives policy advice from an Advisory Board consisting of representatives from University of Victoria faculty, government, non-government service providers and seniors. The 2005-2006 Advisory Board consisted of the following members:

- Marilyn Bater, Geriatrician, Department of Geriatrics, Royal Jubilee Hospital
- Tom Bailey, Medical Director, Residential Services, Aberdeen Hospital
- Denise Cloutier-Fisher, Assistant Professor, Centre on Aging and Department of Geography
- Heather Davidson, Director, Strategic Policy and Research, Ministry of Health Planning
- Pieter De Groot, Senior Manager, Medical Research, Medical Programs, BC Ambulance Service, Ministry of Health Services (Chair)
- Elaine Gallagher, Associate Director (Ex Officio)
- Tessa Graham, Director and Special Advisor, Office of Women and Seniors'

Health (Ex Officio)

- Lorna Hillman, community at large (Chair)
- Mark Horne, Horne Coupar Barristers and Solicitors
- David Hultsch, Director, Centre on Aging, Lansdowne Professor of Psychology (Ex Officio)
- Donna Kirk, District Nurse, Veterans Affairs Canada
- Nigel Livingston, Professor, Department of Biology and Director, University of Victoria Assistive Technology Team
- Andrew Maxwell, President, Friends of the Centre on Aging
- Patricia MacKenzie, Acting Associate Dean, Faculty of Human and Social Development
- Michael J. Prince, Lansdowne Professor of Social Policy, Faculty of Human and Social Development
- Ryan Rhodes, Associate Professor, School of Physical Education
- Helen Simpson, senior, community at large
- Martin Taylor, Vice President Research (Ex Officio)
- Beverly Timmons, University of Victoria Retirees Association (Observer)

University of Victoria Research Affiliates

In 2005-2006, a total of 41 University of Victoria Faculty located in twelve departments (Anthropology, Child and Youth Care, Economics, Geography, History, Human & Social Development, Nursing, Philosophy, Physical Education, Psychology, Social Work, and Sociology) were affiliated with the Centre.

All appointments at the University of Victoria are made in teaching departments. However, in addition to the Director and Patrick McGowan (Social Sciences), Director of the Ladner Satellite Office, five faculty have appointments that provide half-time release from other duties to participate in research at the Centre. In 2005-2006, these core faculty included Drs. Neena Chappell (Sociology), Denise Cloutier-Fisher (Geography), Margaret Penning (Sociology), Kelli Stajduhar (Nursing) and Holly Tuokko (Psychology). Dr. Chappell is also supported by a Canada Research Chair, and Drs. Penning and Tuokko are supported by Senior Investigator Awards from the Canadian Institutes of Health Research.

- Cecilia Benoit, Professor, Department of Sociology
- Neena L. Chappell, CRC in Social Gerontology, Professor, Department of Sociology and Centre on Aging
- Denise Cloutier-Fisher, Assistant Professor, Department of Geography and Centre on Aging
- J. Isobel Dawson, Associate Professor, School of Nursing
- Harold D. Foster, Professor, Department of Geography
- Elaine M. Gallagher, Professor, School of Nursing
- Lucia Gamroth, Associate Professor, School of Nursing
- Roger Graves, Associate Professor Emeritus, Department of Psychology
- David F. Hultsch, Director, Centre on Aging, Lansdowne Professor of Psychology
- Michael Hunter, Associate Professor, Department of Psychology
- Helena Kadlec, Associate Dean, Faculty of Social Sciences, Associate Professor, Department of Psychology
- Peter Kirk, Adjunct Professor, Faculty of Human and Social

... five faculty have appointments that provide half-time release from other duties to participate in research at the Centre.



External research affiliates include a diverse group of researchers.

- Development, Clinical Coordinator, Island Medical Program
- Eike-Henner W. Kluge, Professor, Department of Philosophy
- Karen Kobayashi, Assistant Professor, Department of Sociology
- Valerie S. Kuehne, Vice-President, External Relations, Professor, School of Child and Youth Care
- David C.Y. Lai, Professor Emeritus, Department of Geography and Centre on Aging
- Patricia MacKenzie, Associate Dean, Faculty of Graduate Studies, Associate Professor, School of Social Work
- Michael E. Masson, Professor, Department of Psychology
- Catherine Mateer, Professor, Department of Psychology
- Carol McDonald, Assistant Professor, School of Nursing
- Patrick McGowan, Associate Professor, Faculty of Social Sciences and Centre on Aging
- Marjorie McIntyre, Associate Professor, School of Nursing
- Martha McMahon, Associate Professor, Department of Sociology
- P. Jane Milliken, Associate Professor, School of Nursing
- Anita Molzahn, Professor, School of Nursing
- Carl Mosk, Professor, Department of Economics
- Pamela Moss, Professor, Faculty of Human and Social Development
- Margaret J. Penning, Associate Professor, Department of Sociology and Centre on Aging
- Michael J. Prince, Lansdowne Professor of Social Policy, Faculty of Human and Social Development
- Ryan Rhodes, Associate Professor, School of Physical Education
- Deborah Rutman, Adjunct Assistant Professor, Faculty of Human and Social Development
- Eric W. Sager, Professor, Department of History
- Ronald W. Skelton, Associate Professor, Department of Psychology
- Kelli Stajduhar, Assistant Professor, School of Nursing and Centre on Aging
- Peter H. Stephenson, Professor, Department of Anthropology
- Esther H. Strauss, Professor, Department of Psychology
- Martin Taylor, Vice-President, Research, Professor, Department of Geography
- Holly Tuokko, Professor, Department of Psychology and Centre on Aging
- Zheng Wu, Professor, Department of Sociology
- Lynne Young, Associate Professor, School of Nursing
- E. Paul Zehr, Associate Professor, School of Physical Education

External Research Affiliates

In addition to University of Victoria faculty, researchers from other universities and the community are affiliated with the Centre. In 2005-2006, the Centre had a total of 18 external affiliates working in collaboration with University of Victoria researchers. External research affiliates include a diverse group of researchers. They can be academics from other universities, or community researchers, from not-for-profit, private or government agencies.

- Anne-Marie Broemeling, Faculty, Centre for Health Services and Policy Research, University of British Columbia, Director, Research and Evaluation, Interior Health Authority
- Iris Chi, Director, Centre on Ageing, Professor, Department of Social Work & Social Administration, University of Hong Kong

- Veronica Doyle, Researcher, Clare Research
- David J. Evans, Family Practitioner, Vancouver Island Health Authority
- Shixun Gui, Professor, Sociology Department, East China Normal University
- Weimin Hu, Population Health Analyst, Vancouver Island Health Authority
- Daniel Lai, Professor, Faculty of Social Work, University of Calgary
- Liz McCarter, Wellness Centre Coordinator, Yakimovich Wellness Centre, Vancouver Island Health Authority
- Mark W. Novak, Associate Vice President for International Studies and Dean of Extended Education, San Jose State University
- Norm O'Rourke, Assistant Professor, Department of Gerontology, Simon Fraser University
- Clare Porac, Professor, Department of Psychology, Penn State, Behrend College
- R. Colin Reid, Assistant Professor, Health Studies, UBC Okanagan
- Leslie Roos, Professor, Department of Community Health Sciences, Faculty of Medicine, University of Manitoba
- Vicky Scott, Senior Advisor - Falls Prevention, BC Injury Research and Prevention Unit, Ministry of Health
- Brent J. Small, Associate Professor in Gerontology, Director of Undergraduate Studies, School of Aging Studies, University of South Florida
- Richard S. Stanwick, Chief Medical Health Officer, Vancouver Island Health Authority
- Andrew V. Wister, Chair, Department of Gerontology, Simon Fraser University
- Zachary Zimmer, Research Associate, Population Council, Policy Research Division, New York

Friends of the Centre

The Friends of the Centre on Aging are volunteers. While membership is made up of individuals, it also includes people representing not-for-profit agencies and organizations who have an interest in aging-related issues and who wish to support the research and educational activities of the Centre. The Friends of the Centre is a dynamic group that contributes to the Centre's community involvement. They assist in the communication of research results by collaborating with researchers in the dissemination of new knowledge about issues surrounding aging and also aid researchers with their projects.

The Friends were instrumental with the Centre's participation in Victoria's first annual Embrace Aging month coordinated by the Greater Victoria Elder Care Foundation. The Friends assisted the University of Victoria's Retirees Association with their first Masterminds Lecture Series. They also played a part in the Centre's planning committee and completed their own project with updated information on past VERA recipients.

One of the goals of the Friends is to see that each member's skills and needs are closely matched to an activity. Following is a list of activities the Friends participated in during 2005-2006.

- Provided Research Snapshots by summarizing research findings in short easy-to-read articles that are available to a wide audience
- Facilitated communication and the dissemination of research and knowledge of aging to the community
- Provided assistance with research projects to Centre faculty and students
- Provided information on the research needs of seniors in the community



The Friends of the Centre is a dynamic group that contributes to the Centre's community involvement.

through dialogue and feedback

- Assisted with Centre events by helping to organize various activities and research gatherings such as the Centre's annual Community Forum, other meetings and discussions
- Highlighted positive images of aging in the community through participation in the Embrace Aging: Spotlight on Growing Old initiative
- Interviewed and helped select seniors for the Centre's annual Valued Elder Recognition Award.

One of the key activities of the Friends is the preparation of "Research Snapshots." Snapshots are research papers summarized in lay person's terms for distribution to the public. Further information on the Snapshot Program is included under Knowledge Dissemination and Translation on page 27.

RESOURCES

Budget

The base budget of the Centre for 2005-2006 was \$172,799 consisting of \$137,321 in salaries (Director's stipend, Research Coordinator, Administrative Coordinator, and Secretary) and \$35,478 for general operation of the Centre.

Space

Currently, Centre on Aging operations occupies a total of 4300 square feet in the A Wing of the Sedgewick Building. In addition to this assigned space, some projects have negotiated time-limited access to space on and off campus in various settings. For example, the Research Team for the Family Caregiving in Palliative and End of Life Care projects has negotiated space in the School of Nursing and the Technology Enterprise Facility which houses companies that work closely with the university's research community.

Satellite Office

Our satellite office in Ladner BC has moved into a newly renovated heritage building with 1800 square feet. The Ladner office has seven staff members and is fully funded through research grants received by Dr. Patrick McGowan. Dr. McGowan is an Associate Professor in the Faculty of Social Sciences.

Survey Research Centre

The Survey Research Centre (SRC) had many successes in the 2005-2006 year. It was a year of learning and adjusting to the changing approaches we encountered.

In September 2005, the SRC began a pilot study called Fair Pharmacare for Dr's. Sebastian Schneeweiss (Brigham & Women's Hospital, Boston) and Malcolm Maclure (Health Information Science, University of Victoria). This study to evaluate the utilization of the province's subsidized drug plan by seniors (65+) had been delayed several times with challenges in defining and



approving data linking components crucial to the study with the BC Ministry of Health. The SRC undertook to provide a small sample (n=100) of participants using a random digit dialing (RDD) approach and successfully completed it in early October. Unfortunately, the project is on hold and is currently hoped to re-commence by late August 2006 when logistic issues with the funder have been resolved.

October saw the SRC commence work on a project called Making Meaningful Connections (MMC) for Drs. Denise Cloutier-Fisher (Centre on Aging) and Karen Kobayashi (Sociology). Initially, the project was designed to have the SRC:

- 1) Recruit 425 participants for a six month study from target population phone numbers provided by the Ministry of Health. Participants were to be screened by age, a low score on a social isolation scale, and no recent contact with the BC Nurseline.
- 2) Perform a pre-intervention interview to obtain demographic and general information from the participants.
- 3) Exchange the participant information with the BC Nurseline who would perform 11 intervention calls with each of half of the participants to discuss health issues and resource availability. The second half of the recruited participants would be a control group without any intervention being performed with them.
- 4) Provide a post-intervention survey of all participants (n=400).

The MMC project was to begin recruiting in mid-October in order to provide the sample to the BC Nurseline intervention team to begin the intervention calling in mid-November. Prior to commencing the project, several logistical problems arose with data interchange between the co-investigators and the BC Ministry of Health. The methodology was quickly changed to use a random digit dial approach targeting both rural and urban areas in the province where there was a large population of seniors (65+). A significant change to research objectives was implemented including modification to the scripts used by the SRC. The SRC used the new MMC scripts to interview over 1,000 participants between mid-November and the end of March, 2006.

Another project for BC Statistics that was planned for 2005-2006 had to be deferred into the 2006-2007 year. The SRC is hopeful that the two deferred projects from 2005-2006 will commence in August and September of 2006. As well, several estimates were provided to investigators for grant applications in recent months. The business we might acquire from these submissions remains to be seen.

A challenge that might continue into the 2006-2007 year is the lack of continuing, repetitive business – an “anchor tenant”, of sorts, within the SRC. The delays and postponements of projects have had a significant impact on the utilization of the SRC. The on-again, off-again environment experienced this year made it extremely difficult to hire, schedule and retain employees. Additionally, significant effort was spent by management in keeping active projects “on track” during the year. Marketing efforts suffer from the focus of management on active projects rather than on acquiring new business. A strong partnership with a client such as BC Statistics to provide repeat business would substantially improve the operations and finances of the SRC. Opportunities to form a partnership of this nature are now being vigorously pursued.



Research conducted at the Centre spans basic to applied, quantitative to qualitative, laboratory to community, disciplinary to multidisciplinary, and large-scale to small-scale.

RESEARCH

The mandate of the Centre is to conduct research on aging. Three of the Centre's six specific objectives focus on stimulating, facilitating, and conducting research. Although the other goals of disseminating and applying knowledge about aging to the community as well as training research personnel are also pursued. However, the specific activities related to these domains are subsumed within the overall research orientation of the unit. Research conducted at the Centre spans basic to applied, quantitative to qualitative, laboratory to community, disciplinary to multidisciplinary, and large-scale to small-scale.

Michael Smith Foundation for Health Research Infrastructure Grant

Between July 1, 2005 and June 30, 2006 six Qualified Health Researchers and nine Associated Health Researchers joined the program. One associate researcher on the original application passed away this year resulting in a total of 28 Qualified Health Researchers and 32 Associate Health Researchers. With this continued growth, several new projects and research partnerships have begun and are demonstrated here:

- Dr. Holly Tuokko is partnering with Glenyth Nasvadi, Research Program Advisor, ICBC, to conduct a pilot study to measure the impact of "Exercises for Driving" classes on participant's physical activities, driving habits and strength and flexibility. It is expected that this study will provide data to support a grant proposal for a larger study.
- Drs. Peter Kirk, VIHA; Jane Gair, Island Medical Program; Phyllis McGee, Centre on Aging; and Andre Smith, Sociology collaborated to investigate the use of art in medical education as a means of overcoming barriers to effective communication. An art exhibit depicting scenes of dying patients surrounded by their loved ones was held in the Maltwood Art Museum and Gallery at the University of Victoria in March. Researchers explored the medical student's experience of viewing this art exhibit and engaging in educational drama (i.e. individual and group guided reflective exercises that bring participants into the experience depicted in the art) as an approach to learning about empathy and the physician-patient relationship.
- Dr. Holly Tuokko (Psychology); Dr. Elaine Gallagher (Nursing), Nola Ries (Law), Dr. Rosalie Starzomski (Nursing) and their students collaborated with VIHA in developing a multidisciplinary educational workshop for staff providing care to seniors in complex care settings and students from the University of Victoria about the issue of negligence in health care. A mock trial, focused on the unexpected death of an older woman receiving complex care, was developed and staged. This was followed by group and panel discussions. The format and content of this workshop provided the context within which researchers investigated the impact of an interdisciplinary group discussion and a panel presentation on decision-making and the participant's impressions on the innovative design of this workshop as a learning activity.
- With funds from a SSHRC Major Collaborative Research Initiative grant (2005-2010), Karen Kobayashi is collaborating with Drs. Anne Martin-Matthews (UBC), Carolyn Rosenthal (McMaster), and Steven Prus (Carleton) on a research study examining the relationship between age structure and social support in Canadian families. Using data from the 2001 General Social Survey, the study examines the predictive value of informal age structuring decisions on the provision of support by adult children to parents across a

number of different support domains.

- Dr Penny MacCourt, postdoctoral student and student research affiliate, in collaboration with community partners across Canada, is developing capacity to promote and support senior's mental health. She is using the "Seniors' Mental Health Policy Lens" (SMHPL) which is an analytical tool, made up of a set of questions intended to raise users' awareness about the factors that impact the mental health of older adults, and to guide their analyses of policies and programs from a seniors' mental health perspective. In the fall of 2006, Dr. McCourt and her partners will be selecting sites to implement the SMHPL. Penny is the Research Project Coordinator for BC Psychogeriatric Association which is funded by the Population Health Fund.

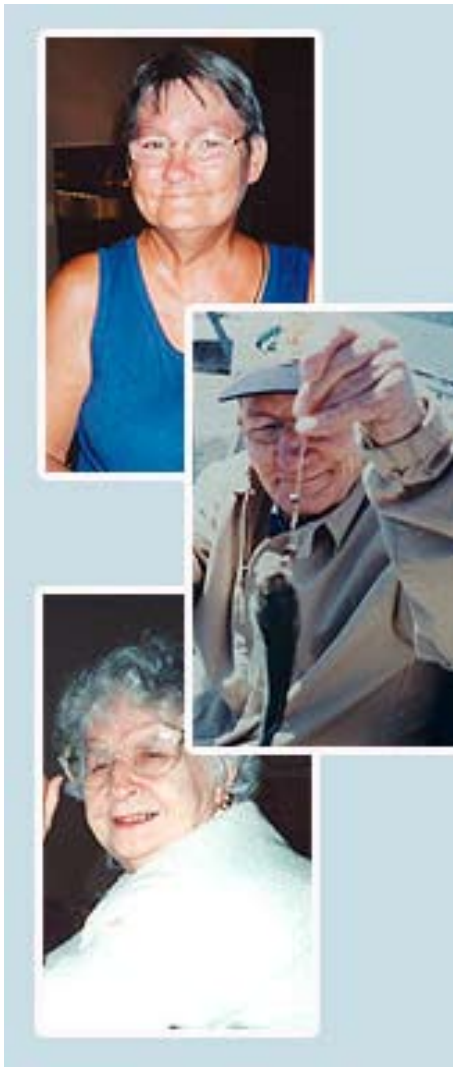
The overall goal of the MSFHR Research Unit Infrastructure grant is to build the Centre on Aging's research capacity and expand and enhance research focused on the social and psychological aspects of aging, population health and health service delivery. In working towards this, our objectives include building on the Centre's relationship with provincial health authorities through a more formal ongoing research relationship, training researchers and disseminating the knowledge researchers are cultivating. These objectives are being met in a variety of ways including:

- On January 5, 2006, Dr. Phyllis McGee, Health Research and Community Liaison Officer met with Dr. Peter Kirk and Heather Cooke to discuss the possibility of establishing a formal partnership between the Centre on Aging and VIHA that would facilitate effective collaborative relations with respect to research, research education and the transfer of findings into practice. With expressed interest in the proposal from VIHA, Drs. Elaine Gallagher and Holly Tuokko became involved. A committee of VIHA and Centre on Aging personnel was formed and a series of meetings took place to develop a "Collaborative" that would facilitate joint efforts between the Centre and VIHA to conduct health research on aging. Committee members included: Dr. Elaine Gallagher; Dr. Holly Tuokko, Dr. Phyllis McGee, Dr. Peter Kirk, Dr. Marilyn Bater, Heather Cook, Lori Wager, Veronica Morris, Lori Wager, and Elaine Klimes. As of June 30th a Memorandum of Understanding to create a Centre on Aging Continuing Health Services Collaborative (COACH) was in its final draft. It is hoped that this formalized research relationship with VIHA and the spirit of this understanding will further facilitate the ability of VIHA personnel, UVic faculty, and students to engage in joint educational and research activities, exchange academic materials and publications, as well as exchange personnel and faculty members for research, lectures, discussion, teaching, and training purposes. Plans are underway for a formal announcement of the collaborative in Fall 2006 and initial projects are already being proposed. This Memorandum of Understanding and Collaborative will serve as a potential model for other UVic and VIHA departments interested in enhancing their research capacity formalizing their research relations.

- Another goal of the grant is to develop international research relations by applying for visiting fellowship grants. Kelli Stadjuhar received a Visiting Fellow Grant Research Award from Edith Cowan University in Australia. Supplementing this with funding from her Establishment Grant, which is part of a MSFHR Scholar Award, she will be spending two months in Perth, Australia at Edith Cowan University in the next year working with Dr. Kristjanson, Director of the Western Australia Centre for Cancer and Palliative Care Research, and one week at the University of Melbourne working with Drs. Peter Hudson and Sancha Aranda. The specific aims of her visit are to:
(a) To gain a better understanding of the cancer care and palliative care system



The desire to strengthen the research relationship with VIHA has grown dramatically during the past year.



in Western Australia;

(b) To establish international relationships with researchers of the Western Australia Centre for Cancer and Palliative Care Research for the purposes of ongoing research collaboration;

(c) To identify areas of mutual interest for research collaboration and to begin working on collaborative grant applications in the area of palliative caregiving research;

(d) To identify areas for joint research publication and begin working on collaborative manuscripts; and

(e) To establish a relationship with Dr. Kristjanson for the purpose of developing an ongoing mentorship relationship.

- Knowledge translation events are listed in the Informal Lecture Series section on page 25.
- Training activities have been organized in concert with VIHA region, the Centre on Aging, the Research & Academic department at VIHA and BC Network for Aging Research through the “Collaborative Research Workshops”. During 2005-2006, two workshops were held “Formulating the Research Question” and “Qualitative Health Research: What is the Point?”

Research Projects

In 2005-2006, there were a total of 115 active research projects. New research awards were supported by a total of \$5,911,931.00 from various external funding agencies. Appendix B provides a complete listing of projects including new and ongoing research grants. Appendix C lists completed research grants. Brief summaries of five ongoing projects are given below to illustrate the type and range of projects being conducted.

◆ *Health System Change And Cancer Service Utilization Among Older Adults in BC, 1986-2003*

Principal Investigator: Margaret Penning, Department of Sociology

Co-investigators: Moyra Brackley, Centre on Aging and Mary Lesperance, Mathematics & Statistics

Collaborator: Brian Weinerman, BC Cancer Agency, Vancouver Island Cancer Centre

Funded by: CIHR and the National Cancer Institute

Through the 1990's, provincial and territorial governments across Canada shifted their health care funding allocation and organizational foci toward community-based care. This decision was premised in part on a population health model which recognizes that individual and population health are affected by social, cultural, environmental, and biological factors, with social and economic inequalities accorded particular importance. As a result, the dominant foci of health reform based on the population health model include enhancing preventative and community-based resources for care, as well as ensuring equitable access to health care among groups differentiated by such factors as age, gender, race, ethnicity, income, and rural-urban residence.

The extent to which structural changes directed towards implementing a population health model have led to a shift of focus and resources consistent with the objectives of health reform remains unclear. Health reforms such as those recently introduced in Canada have the potential not only to enhance, but also to harm equity. However, the equity implications of health reform have seldom been evaluated. This is particularly true with regards to meeting the care needs of older adults, including those with specific chronic conditions such as cancer and in sectors other than acute in-patient hospital care.

This research will address these issues by focusing on changes in access to cancer-related health services over time (1986-2003), in association with health care reform among older adults within and across vulnerable subpopulations. Researchers will assess whether community-based screening, primary care, out-patient hospital care, home care and palliative or hospice care utilization in relation to cancer changed in conjunction with health reform, and whether it did so in similar or different ways across socially vulnerable subpopulations defined by gender, income and area of residence.

Researchers are in the early stages of this study. They have submitted their request for data from the BC Linked Health Data maintained at UBC and are updating their literature review with information gathered from recently published articles.

◆ **Health Experiences Of Adults Aging With A Developmental Disability**

Principal Investigators: Carol McDonald and Marjorie McIntyre, School of Nursing

Funded by: Koerner Foundation, Toronto through the generous efforts and support of the Garth Homer Foundation

The objective of this project is to generate new knowledge and understandings of the lives of older adults with developmental disabilities. The overall research question guiding this pilot project is: What is the experience of health for people with developmental disabilities as they age? Experience of health encompasses the broad experience of well being: the quality of life that is formed through social, physical, relational and material influences such as housing, work and retirement, social and familial relationships, leisure activity, a subjective sense of well being and the presence of physical limitations or illness. To generate as much understanding as possible of the lived lives of people aging with developmental disabilities, data was collected through interviews with individuals living with developmental disabilities, focus groups with caregivers and service providers, and field observation in places where individuals with developmental disabilities live and spend time.

In September 2006 Dr. McDonald and Dr. McIntyre will present papers in which they discuss issues of consent, choice and autonomy for people with ID (intellectual disabilities) at the Philosophy in Nursing Conference in Dublin Ireland and meet with several researchers in the UK to exchange information on models of practice for residential and day programs for aging people with ID.

Since the conception of the study Dr. McDonald and Dr. McIntyre have been meeting with their Community Advisory Group on a monthly basis. The members of this group have been invaluable in providing access to day services

Through the 1990's, provincial and territorial governments across Canada shifted their health care funding allocation and organizational foci toward community-based care.

and group homes in the community and in facilitating the recruitment of participants for the study (people with ID, family members and service providers). Members include the collaborators listed above, as well as Fonda Willis – Garth Homer Society, Katherine Wood – self-advocate and artist, Paula Grant – CLBC, Karen van Rheenen-Kardelhomes and Catherine Traunweiser – Community Living Services (CLBC), Capital Region.

This year, Dr. McDonald and Dr. McIntyre were joined by Lara Schultz who worked as a research assistant on the project. Lara, whose Masters Degree is in Counselling Psychology, has worked with people in the community who have intellectual disabilities. She has proven to be an excellent addition to this research team. Lara has been accepted at the University of Calgary in doctoral studies for the fall term. She will continue her work with Drs. McDonald and McIntyre as a co-applicant on a SSRHC application.

Preliminary findings of this pilot study have been the impetus for application for two funding opportunities. Drs. McDonald and McIntyre have submitted a proposal to SSHRC for a two-site study (Victoria and Prince George), Understanding Experiences Of Grief And Bereavement For Older Adults With Intellectual Disabilities, on which they will be joined by Dr. Anne Bruce, and Dr. Pat MacKenzie. A second proposed study – Understanding Quality Of Life For People With Intellectual Disabilities As They Age – has been submitted to CIHR. This is a four site (Prince George, Cranbrook, Langley, and Victoria) study. Applicants on this study include Dr. Roy Brown, Dr. Pat McKenzie, Dr. Elaine Gallagher and Nancy Jokinen. The Community Advisory Group provided letters of support and will serve as collaborators in both the proposed follow-up studies.



◆ **Age Friendly Cities, World Health Organization**

Principal Investigator: Elaine Gallagher, Centre on Aging, School of Nursing

Co-investigators: Holly Tuokko, Centre on Aging, Psychology and Denise Cloutier-Fisher, Centre on Aging, Geography

Funded by: BC Ministry of Health and the World Health Organization

An age-friendly community is characterized by supportive and enabling physical and social environments. These environments include all the settings of life in the city, all the services that are provided or exchanged and the products that are used in the activities of daily living.

In the developed world, about 75 percent of older adults live in metropolitan areas and the proportion will grow to 82 percent by 2025. Making cities age-friendly is one of the most effective policy strategies to respond to demographic aging, which is taking place throughout the developed world, and particularly in BC. The World Health Organization (WHO) is targeting major urban centres because they generally have more economic and human resources than small communities enabling them to make age-friendly changes. By their example, they can lead the way for other communities in British Columbia, Canada, and the world.

In an age-friendly city, policies, services and structures are designed to support and enable people to “age actively”. Public and commercial settings and services are accessible and they accommodate varying levels of ability. Age-

friendly service providers, public officials, community and faith leaders and business people recognize the great diversity among older persons, promote their inclusion and contribution in all areas of community life, respect their decisions and lifestyle choices, and anticipate and respond flexibly to aging-related needs and preferences.

Saanich, BC has been selected to represent one of twenty countries around the world who will be participating in this project. The objectives of this project are to:

1. Identify the barriers to maintaining active, healthy and independent lives that older people experience;
2. Gather ideas from older persons on the priorities to make the city more age-friendly;
3. Stimulate awareness among the leaders of the community regarding how “age-friendly” the community is from the perspective of older persons;
4. Elicit further information with respect to the community’s strengths and weaknesses with respect to “age-friendliness”.

This project is the first phase of the WHO Age Friendly Cities Index Project that involves assessing each community’s strengths and weaknesses in promoting active aging by means of focus groups with older persons, caregivers of older persons and community and business leaders. Results of data collected in 20 participating countries will be collated to create an “Age-friendly” index to be released by WHO in October 2007.

◆ ***A Critical Inquiry Into The Construction Of Contested Illnesses: Gender, Medicine And Culture***

Principal Investigator: Pamela Moss, Studies in Policy and Practice, Faculty of Human and Social Development

Co-investigator: Michael Prince, Lansdowne Professor of Social Policy, Faculty of Human and Social Development

Funded by: Social Science and Humanities Research Council of Canada

Contested illness is illness dismissed as illegitimate by researchers, bio-medicine, state institutions, family or friends, and is often characterized as psychosomatic disorders. Psychosomatic disorders are characterized as of the body, of the mind, or both; while at the same time not actually existing. Examples of two illnesses considered to be contested are Myalgic Encephalomyelitis (ME) (also known as Chronic Fatigue Syndrome) and Post-traumatic Stress Disorder (PTSD) which is also known among veterans who have combat experience as Operational Stress Injury or OSI.

We understand the processes that make specific illnesses contested are socially constructed, located in biomedical explanations of the body, and shaped by time and place specific cultural representations of what it is to be ill. The overall goal of this three year research project is to identify specific regulatory and disciplining processes through which illness becomes contested, as well as account for some strategies and practices persons with contested illness engage in order to challenge conventional and established notions of what it is to be ill. The specific objectives are to:

- I. Explore gendered dimensions, medical explanations and cultural repre-

In an age-friendly city, policies, services and structures are designed to support and enable other people to ‘age actively’.

- sentations of contested illness;
2. Identify processes through which illness becomes contested, including policy, state regulatory apparatuses and ideologies; and
 3. Offer an account of the strategies and practices persons diagnosed with contested illness employ to challenge conventional and established notions of what it is to be ill.

Over the next year Drs. Moss and Prince will be collecting historical data, including medical journal publications from the mid-1800s to present, post-World War II Hollywood film noir, popular women's magazines from the 1980s, and the website for the Department of National Defence for inclusion in their analysis.

◆ ***Closing the Knowledge Gap for Seniors & Community Care Collaborative***

Principal Investigators: Jean Kozak, Director of Research, Centre for Health Aging at Providence Health Care and Department of Health Care and Epidemiology-UBC and Nancy Rigg, Community Care Network, VCHA

Managers/Decision Makers: Barbara Korabek, VIHA; Katie Hill, IHA; Ann Marr, MoH; Akber Mithani, PHC; Tim Rowe, NHA; and Celso Teixeira, FHA.

Knowledge Broker: Janet Joy, VCHA

Researchers: Lynn Beattie, UBC; Neena Chappell, UVic; Martha Donnelly, UBC; Elaine Gallagher, UVic; Adrian Levy, UBC; and Vicky Scott, UVic

Funded by: Michael Smith Foundation for Health Research

During the past year, this Collaborative has been developing pilot projects and proposals within three areas, all of which are aimed in closing the knowledge gap for seniors and community care. Firstly, the provincial project team is currently developing the protocol for a longitudinal evaluation of Assisted Living (AL) in BC, with the goal of submitting it for CIHR funding in the New Year. In support of the grant preparation, two pilot studies have been underway. The first examined how case managers in AL determined client eligibility for the program and how managers interacted with other service managers in home care and residential care. Interview work has been completed and the results are currently being prepared for publication. The second pilot, currently underway, is a survey of the rates of and reasons for ineligibility for AL services. The purpose for this exploration is to help understand sample size issues for comparison groups regarding risk levels and need for AL-type services.

Secondly, in early 2006, the groundwork for the development of the GIS database began through introductory studies that have since expanded. Using Coastal Health as a pilot demonstration site, Census data as well as service provider data were used to explore geospatial maps for determining placement of future "Campus of Care". By linking population demographics of seniors, along with public transit information, location of pharmacies and community recreation facilities, as well as other related spatial information, spatial decision maps were created to assist decision-makers in planning for future health services. The results of the work have been accepted for presentation at a National Conference on Home Care.

There is nothing like a gathering of great minds to generate enthusiasm about gerontology research!

Finally, an 18-month study, funded by the Canadian Patient Safety Institute (\$97,523), is currently underway to determine the prevalence of adverse events (AEs) in residential care facilities. The study explores the prevalence of AEs and their relationships in three major areas of geriatrics: medication, falls, and abuse and neglect. It will explore the incidence of under prescribed medication as an adverse medication event as well as the identification of the rate of preventable events. In addition, the project will explore the reliability of electronic incident reporting systems used in Long Term Care (LTC) for the capture of adverse events. Four LTC sites in the lower mainland of BC, stratified by size, will be studied over a 12-month period for incidents both within a random sample of medical charts (n=134) and their electronic incident reporting system.

Publications

Scientific publications are one of the main “products” of researchers at the Centre. A complete list of publications by University of Victoria Centre on Aging Research Affiliates is provided in Appendix D.

Collaboration and Networking

Faculty affiliated with the Centre have an extensive history of collaboration both within and outside of University of Victoria. Within the University, multiple research clusters are currently active, many of which are supported by external research grants. Some new collaborative clusters include: Drs. Gallagher, Cloutier-Fisher, and Tuokko; Drs. McDonald and McIntyre; Drs. Moss and Prince; Drs. Stajduhar, Purkis, and Cloutier-Fisher, and Drs. Rhodes, Porter, and Warburton.

The faculty affiliates of the Centre also collaborate extensively with community researchers, including physicians and professionals in various health authorities and other organizations. We have found that the recently funded infrastructure grant, as well as the emerging Island Medical Program has resulted in increased collaborations with community researchers. Our links to VIHA represents an important community collaboration that has strengthened through the infrastructure grant. (Please refer to the MSFHR Infrastructure Grant information on page 14). Funds from this grant are being used to support research and liaison staff facilitating collaboration with researchers at VIHA and other community organizations. Similarly community organizations such as BC Transit, CRD Traffic Safety Commission, Garth Homer Society, Intercultural Association, Recreation Integration and Silver Threads are partnering with our affiliates to support health research in the community.

BC Network for Aging Research

The evolution of the BC Network for Aging Research (BCNAR) in the year since its inception has proactively facilitated research networking and collaboration. The network which is divided into health authority regions is represented by a Regional Liaison Officer (RLO) who coordinates with the Network Coordinator, Bobbi Symes, and Co-Leaders (Gloria Gutman, Lynn Beattie, David Hultsch, Dawn Hemmingway, Colin Reid and Andrew Wister). This framework is one key to making BCNAR a provincial resource. The

One of the specific objectives of the Centre is to disseminate knowledge on aging to scientists, practitioners, and the public.



RLOs work within the region to collect information and facilitate local collaborations and the team works collectively to build a solid foundation and move provincial initiatives forward. The next section outlines BCNAR's provincial developments followed by a section highlighting regional expansion.

BCNAR's First Annual Provincial Workshop focused on dementia research. The workshop, attended by 110 people, was followed by the BCNAR Launch and First Annual Meeting. The event featured 11 speakers who presented current research in basic biomedical sciences, clinical medicine, health systems and services, and population and public health. There was also a poster competition. The highlights of the afternoon were break-out sessions in which participants identified "Burning Research Questions." PowerPoint presentations and a summary report of "Burning Research Questions" may be found on the BCNAR webpage.

PROVINCIAL DEVELOPMENTS

The Research on Aging Database is one of the networks leading accomplishments. The database is a mechanism to link researchers and research users. With over 1500 citations of publications by BC authors on individual or population-aging-related topics, researchers and research generated in this province are easily identifiable. The database is accessible to input or to retrieve citations through the BCNAR webpage.

The BCNAR webpage is another development that serves as mechanism for connection. The website is an up-to-date resource providing information on research funding and job opportunities, events, news and recently released documents on aging. The address is <http://www.bcnar.ca/>.

BCNAR aims to increase the health and aging research capacity in BC. The network works most effectively with active members who communicate their contributions and needs to the RLO and secretariat. Members are asked to inform the RLO of new publications and grants received and to communicate requests to post relevant regional news and projects on the website. As the network works, the whole of BCNAR will become more than the individual parts.

REGIONAL DEVELOPMENTS

In the past year, Reba Chaplin has served as the Regional Liaison Officer for the Vancouver Health Authority (VIHA) Region. In this time, BCNAR has doubled membership and participated in three collaborative research events. In addition, this region has made efforts to stay connected with gerontology research in the small towns and rural regions on Vancouver Island.

The regional BCNAR developments include participation in the planning and implementation of two Collaborative Research Workshops and one Coffee and Chocolate Research Seminar.

The first Collaborative Research Workshop, "Posing Health Research for Evidence Based Practice" took place on December 2, 2005. The session included co-presentations, facilitated break-out groups and a large group discussion. The workshop was live in Victoria and video-linked to Nanaimo, Duncan, Courtney and Tofino. There were a total of 102 attendees with 21% from UVic, 70% from VIHA and 9% from other organizations. This workshop was a successful interdisciplinary networking opportunity that generated thought-provoking dialogue.

“Qualitative Health Research – What’s the Point?” was the second Collaborative Research Workshop. This workshop took place on May 17, 2006 in Victoria and was replicated in Parksville on July 14. This dynamic session was designed to provide an appreciation for the use of qualitative methods in health research and included performance presentations, a panel discussion and break-out groups. The workshop provided an excellent opportunity to learn and network for approximately 60 attendees from UVic, VIHA, Camosun College, Malaspina University-College and the Ministry of Health.

Our third collaborative endeavour was a Coffee & Chocolate Research seminar with the BC Rural and Remote Health Research Network. On May 12, 2006, at Malaspina University College, Dr. Arlene Carson, PhD, Aud (c) CHSRF Post-Doctoral Fellow, presented on the many non-medical, social factors influencing community and individual health across the lifespan. Dr. Carson presented findings from one urban community-based health promotion project (PATH project) as a springboard to discuss the questions and issues that arise within the participants’ own practice or research.

BC Rural and Remote Health Research Network

The mission of the BC Rural and Remote Health Research Network is to improve the health of rural and remote British Columbians through the creation of new research knowledge and subsequent translation into practice. Through increasing support for more researchers, research collaborations and knowledge exchange, the BC Rural and Remote Health Research Network offers a supportive infrastructure designed to facilitate the investigation of issues relevant to improvements in the health of rural and remote communities from biomedical, clinical, health services and population health perspectives. We encourage the development of rural health research based in the experiences and characteristics of rural and remote regions and with an emphasis on creating and nurturing academic-community partnerships. We also encourage the engagement of multi-disciplinary investigative teams.

The secretariat of the BCRHRN is housed at the University of Northern British Columbia, with additional sites at the University of British Columbia and the University of Victoria. The Scientific Co-Directors for the network are Fiona MacPhail, PhD (UNBC), Stefan Grzybowski, MD (UBC) and Denise Cloutier-Fisher, PhD (UVic). You can also learn more about the network on the web at: <http://www.bccrrhn.ca>.

REGIONAL DEVELOPMENTS

In the past year, Theresa Hogg-Jackson has served as the UVic Site Coordinator. Site activities during this time include eight events hosted in various locations on the Island. While a number of these activities have been jointly hosted with other networks and agencies, we would like to highlight the seed grant development. Several of these grants have been awarded to foster rural and remote health research capacity. The recipients for this cycle are: Dr. Elizabeth Banister (UVic) for Understanding Aboriginal Adolescent Sexual Health Concerns: Informing a culturally sensitive sexual health mentorship curriculum; Dr. Carol Oosthuizen and Les Smith (Prince George Child Development Centre) for Using Family and Service Provider Perceptions to Refine Ideas About Best Practices: An investigation into early intervention services for children with special needs in the Northern Interior of British Columbia; Dr. Marina Morrow (SFU), Mental Health Reform: Understanding Rural Community Capacity; and Terry Boucher (North Cariboo Metis Association) for Healing Our Future Leaders.

We encourage the development of rural health research based in the experiences and characteristics of rural and remote regions and with an emphasis on creating and nurturing academic-community partnerships.

One of the specific objectives of the Centre is to disseminate knowledge on aging to scientists, practitioners, and the public.

KNOWLEDGE DISSEMINATION AND TRANSLATION

One of the specific objectives of the Centre is to disseminate knowledge on aging to scientists, practitioners, and the public. A related objective is to promote the translation of research findings into interventions, services, products, and policies relevant to older adults. We have attempted to achieve these objectives via a number of mechanisms designed to reach different audiences.

Researchers worked to develop new research methods that will facilitate the creation of interventions, services, products, and policies. For example, Dr. Neena Chappell is on the board of the Canadian Longitudinal Study on Aging, Phase 2 as well as a co-investigator. Drs. Penning and Tuokko are co-investigators and theme leaders of the Social and Psychological perspectives, respectively. The focus of the study is to document the changing biological, medical, psychological, social, and economic aspects of people's lives.

Presentations at Meetings of Professional Organizations

Presentations of research at meetings of professional organizations represent one major mechanism for sharing research findings with other scientists and professional practitioners in the field of aging. For a complete list of presentations at meetings, please refer to Appendix E. During 2005 - 2006 University of Victoria Research Affiliates of the Centre presented 132 papers at scientific meetings.

Conferences

Under the direction of Dr. Patrick McGowan, the Centre on Aging co-hosted the first International Conference on Patient Self-Management. The conference, *New Perspectives – International Conference on Patient Self-Management* was co-hosted with the BC Ministry of Health Services from September 12 – 14, 2005. The conference hosted the world's leading experts including:

- Dr. Russell Glasgow, Senior Scientist with the Clinical Research Unit, Kaiser-Permanente Colorado, Denver, Colorado
- Dr. Kate Lorig, Professor of Medicine and the Director of the Patient Education Research Center at Stanford University in California
- Martha Funnel, a clinical nurse specialist, diabetes educator and adjunct lecturer in the University of Michigan, School of Nursing
- Barbara Redman, professor and Dean of the Wayne State University College of Nursing in Detroit, Michigan

Community Forum

The 2006 Community Forum, entitled Enhancing Capacity in Later Life, was held on February 23, 2006 and featured an opening plenary address by Lynn Guengerich and Marie Weatherby. They spoke about the role of the Nurse Practitioner and the specific health needs of seniors. Dr. Robert Dalton's closing plenary address was "Ever learning, ever growing: Art experiences for the Elderly." Workshop presenters and their topics were:

Prue Cunningham and Cynthia Tandy:	<i>Healthy Eating for Older Adults</i>
James Darke:	<i>Getting More for Your Dollars</i>
Elaine Gallagher and Veronica Doyle:	<i>Enhancing Capacity in Supportive Living</i>
Michael Masson:	<i>The Nature of Human Memory</i>
Patrick McGowan:	<i>Quality of Life, Health, and Techniques to Enhance Capacity</i>
Laura Watts:	<i>Consent and the Law</i>

Informal Lecture Series

The Centre organizes a series of informal lectures by researchers from University of Victoria and visiting faculty from other institutions. This lecture series is directed toward professionals in the community and graduate students, although other groups such as faculty and seniors also attend. The following lectures were held in 2005 - 2006:

- July 25, 2005
Dr. Ross Gray, Associate Professor in the Department of Public Health Sciences, Faculty of Medicine, University of Toronto as well as Consultant Psychologist and Researcher in the Cancer Program at Sunnybrook & Women's Health Sciences Centre in Toronto presented "Translation of Aging Men's Health and Illness Research into Drama and Storytelling".
- December 2, 2005
Dr. Cecilia Benoit, Department of Sociology and Office of Research Services, University of Victoria, and Dr. Kenneth Moselle, VIHA/Mental Health & Addictions Services presented an interactive workshop, "Posing Health Research Questions for Evidence-Based Practice" as part of the Research, Design & Methodology Workshop Series.
- February 14, 2006
Vancouver Island Health Authority and the Centre on Aging presented "You be the Judge: What constitutes negligence in facility care?" An interdisciplinary educational senior's health complex care workshop and 'mock trial' involving students from nursing, psychology, and law.
- March 3 & March 4, 2006
Dr. Maura McIntyre and Dr. Ardra Cole, Ontario Institute for Studies in Education, University of Toronto presented, "The Love Stories: A Performance about Caregiving and Alzheimer's Disease." A 45 minute two-person performance and tribute to family caregivers and a celebration of care and caregiving.
- March 1, 2006
Dr. Brian Wharf and Dr. Marilyn Callahan presented, as part of the Masterminds Lecture Series, "Grandmothers Raising Grandchildren: The Underground Child Welfare System."
- March 4, 2006
Deidre Scherer, fabric artist from Vermont, USA, presented a lecture, as

This lecture series is directed toward professionals in the community and graduate students, although other groups such as faculty and seniors also attend.

part of the Embrace Aging festival during March 2006, “Challenging Notions of Aging and Dying.”

- March 7, 2006

Dr. Robert Dalton, Faculty of Education, University of Victoria, presented, as part of the Embrace Aging festival during March 2006, “Framing the Past: Seniors Stories Illustrated by Youthful Artists.”

- March 8, 2006

Dr. Harold Coward presented, as part of the Masterminds Lecture Series, “Can the Religions Live Together?”

- March 12, 2006

Rachel Dean, UVic PhD candidate presented, as part of the Embrace Aging festival during March 2006, “Strategies for Incorporating Physical Activity in Daily Life.”

- March 15, 2006

Dr. Christopher Barnes presented, as part of the Masterminds Lecture Series, “The NEPTUNE Project: Transforming Our Understanding of the Deep Ocean Environment.”

- March 22, 2006

Dr. Pat Martin-Bates presented, as part of the Masterminds Lecture Series, “Inscapes in Time’s Eye: A history of printmaking, including projection of an extensive slide collection.”

- May 12, 2006

Pat Samples, MA, presented “Comfort and Care for Family Caregivers”. Joint presentation with Family Caregivers Network Society and Centre on Aging.

- May 17, 2006 & July 14, 2006 (Parksville)

Dr. Marjorie MacDonald, UVic, Nursing; Dr. Andre Smith, UVic, Sociology; Ms. Connie Carter, UVic PhD (Candidate), Sociology; Ms. Bev Wilden, RN, MN, VIHA, Elderly Mental Health and Addictions; Dr. Susan Crawford, CIHR, Institute on Aging; Phyllis McGee, Centre on Aging; and Veronica Morris, VIHA, presented “Qualitative Research – What is the Point?” as part of the Research, Design & Methodology Workshop Series.

- June 14, 2006

Dr. Neena Chappell presented “Caregivers: Why Some Cope Well” with the Family Caregivers Network Society.

Laura Funk, graduate student and Research Associate at the Centre on Aging also hosted a series of Student Lunches together with Rachel Dean, who is co-student representative of the CAG Student Connection. This year the Centre on Aging and the Canadian Association on Gerontology’s Student Connection offered a wide range of student lunch sessions for graduate students. The purpose of the lunch sessions is to provide practical information about topics that students might not otherwise be exposed to. These lunch sessions attracted interest from students from a wide range of faculties and were very well attended. Sessions held over the academic year:

- Publishing in Quantitative Academic Journals, with Neena Chappell (Sociology) and David Hultsch (Psychology)
- Publishing in Qualitative Academic Journals, with Andre Smith (Sociology)
- Translating Research into Policy and Practice, with Elaine Gallagher (Nursing)
- Managing and Organizing the Research Literature, with Inba Kehoe (Library)
- Presentation Skills, with Peter Stephenson (Anthropology) and Trudy Pauluth-Penner (Applied Theatre Consulting).

- Arts-Based Inquiry, with Trudy Pauluth-Penner (Applied Theatre Consulting) and Arlene Carson (Post-Doc, VIHA and Centre on Aging)
- “Marketing” Oneself as a Researcher, with Andre Smith and Karen Kobayashi (Sociology)
- Community-Based Research, with Marge Reitsma-Street (Social Policy and Practice)
- GIS: An Introduction for Non-Geographers, with Diane Allan (Centre on Aging)

Research Snapshots

Research Snapshots are summaries of research papers translated into layman’s terms by the Friends of the Centre for distribution in the community. The following Snapshots were prepared from July 1, 2005 to June 30, 2006:

Aboriginal Beliefs About Organ Donation: Some Coast Salish Viewpoints, Daphne Chazottes, July, 2005. (Molzahn AE, Starzomski R, McDonald M, O’Loughlin C (2004). *Aboriginal Beliefs About Organ Donation: Some Coast Salish Viewpoints*. *Canadian Journal of Nursing Research*, 36, 110-128.)

Making Sense of Alzheimer’s Disease in an Intergenerational Context, Daphne Chazottes, July, 2005. (Smith AP, Kobayashi KM (2002). *Making Sense of Alzheimer’s Disease in an Intergenerational Context: The Case of a Japanese Canadian Nisei (Second-Generation) Headed Family*. *Dementia* 1(2), 213-225.)

Repartnering After First Union Disruption, Daphne Chazottes, July, 2005. (Wu Z, Schimmele CM (2005). *Repartnering After First Union Disruption*. *Journal of Marriage and Family*, 67, 27-36.)

Chinese Canadian Beliefs Toward Organ Donation, Daphne Chazottes, July, 2005. (Molzahn AE, Starzomski R, McDonald M, O’Loughlin C (2005). *Chinese-Canadian Beliefs Toward Organ Donation*. *Qualitative Health Research*, 15, 82-98.)

Canadian Disability Policy: Still a Hit-and-Miss Affair, Andrew Maxwell, July, 2005. (Prince MJ (2004). *Canadian Disability Policy: Still a Hit and Miss Affair*. *Canadian Journal of Sociology*, 29(1), 59-82.)

End of Life Care in Acute Care Hospitals in Canada: A Quality Finish? Andrew Maxwell, October, 2005. (Heyland DK, Groll D, Rocker G, Dodek P, Gafni A, Tranmer J, Pichora D, Lazar N, Kutsogiannis J, Shortt S, Lam M. *End-of-Life Care in Acute Care Hospitals: A Quality Finish?* *Journal of Palliative Care*, 21(3), 142-150.)

The Bereavement Experience Following Home-Based Family Caregiving for Person with Advanced Cancer, Daphne Chazottes, November, 2005. (Koop PM, Strang, VR (2003). *The Bereavement Experience Following Home-Based Family Caregiving for Persons with Advanced Cancer*. *Clinical Nursing Research* 12(2), 127-144)

A Comparison of Methods for Measuring Cognitive Change in Older Adults, Andrew Maxwell, November, 2005. (Frerichs RJ, Tuokko HA (2005). *A Comparison of Methods for Measuring Cognitive Change in Older Adults*. *Journal of Archives of Clinical Neuropsychology*, 20, 321-333.)



The Bulletin is a method of communicating research findings and studies in a lay format, advertising lectures and sharing information about the evolving activities at the centre.

Valued Elder Recognition Awards (VERA) and International Day of the Older Person (IDOP) Lecture

The Valued Elder Recognition Awards (VERA) became part of our International Year of the Older Person celebrations in 2000. The intent of the award is to celebrate seniors who volunteer and make a difference in our community. Nominations are accepted from the community and award recipients are chosen by a committee that includes seniors, Centre faculty and staff, and individuals from the community. The awards are given in conjunction with the annual International Day of the Older Person public lecture October 1. The 2005 award recipients were Michael Brodsky, George and Ruth Cook, Joyce Norris-Jones and June Pryer.

The 2005 IDOP lecture was given by Dr. Robert G. Evans, Professor, Economics, University of British Columbia on "Apocalyptic Demography: The Use and Misuse of an Aging Population."

Public Lectures and Media Contacts

Faculty, staff, and students associated with the Centre frequently give public talks. The lectures cover a variety of topics from a general description of the activities of the Centre to specific research projects and related results in particular areas of interest. As well, researchers affiliated with the Centre are contacted by local, national, and international media outlets concerning their research.

Talks are given to a wide range of audiences from students, parishioners, business people, volunteers, government workers and healthcare service providers to staff and members of community associations, foundations, non-profit societies.

Centre Bulletin

The Bulletin has evolved from a paper only document to a web-based newsletter published twice a year. The Bulletin is a method of communicating research findings and studies in a lay format, advertising lectures and sharing information about the evolving activities at the centre. The Bulletin is distributed to the following audiences: (a) seniors, professionals, and individuals in government and in the local community, (b) academics locally, nationally and internationally, and (c) not-for-profit and lobby groups locally and nationally.

Website

The Centre on Aging maintains a website to disseminate information on aging research. The address is: www.coag.ubc.ca. While current research information is available, we have expanded the site to include our new scholarships in aging and the BC Networks for Aging Research and Rural and Remote Health Research.

We continue to develop the website and will be hosting a student forum in the upcoming year. The pages will offer students information on available resources and a place for online discussion of topics related to their research.

COMMUNITY INVOLVEMENT AND RECOGNITION

Staff and faculty affiliated with the Centre on Aging are also involved in a variety of community efforts to improve the health and quality of life for older adults.

Dr. Elaine Gallagher serves as chair of the Biological and Health Sciences Division of the Canadian Association of Gerontology.

Lois Edgar sits on the Elder Friendly Community Network planning committee and is responsible for communications. Staff and researchers affiliated with the Centre share information at the monthly breakfast meetings and establish new links within the community with organizations dedicated to working collaboratively to enhance the community's capacity to respond to the needs of older adults.

During the past year, Dr. Phyllis McGee has represented the Centre on Aging on the Embrace Aging Committee, a committee established by the Greater Victoria Eldercare Foundation that organized and sponsored over 100 community events during March 2006. These events which spotlighted growing older were designed to increase knowledge and dialogue on aging and the tremendous abilities, talents and personalities of older adults in our community. The Centre on Aging hosted the opening event at UVic's Maltwood Art Museum & Gallery where an art exhibit, by Vermont fabric artist Deidre Scherer, displayed scenes of older adults towards the end-of-life surrounded by family and friends.

The British Columbia Psychogeriatric Association (BCPGA) is a provincial, professional, multidisciplinary association established to facilitate collaboration in practice, knowledge development, research and advocacy related to the psychogeriatric population (bcpga.bc.ca). Dr. Tuokko is a founding member of the organization and presently serves on the Research Committee whose objectives are: to foster, promote, and facilitate the dissemination and utilization of research knowledge on mental health problems associated with advanced age; to foster, promote, and facilitate the development of research activities within the membership addressing psychogeriatric issues; to serve as a resource to the organization concerning the status of psychogeriatric research in British Columbia and in general.

TRAINING

As a research unit, the Centre does not offer any courses, certificate programs, or degree programs related to aging. Nevertheless, consistent with the University's Guidelines for Approved Research Centres, one of our objectives is to contribute to the research training of students, particularly at the post-graduate and post-doctoral levels.

In order to facilitate this endeavour the Centre has worked with the community to create a scholarship. This year the Victoria Gerontology Association, along with a number of individuals in the community donated funds to the Neena Chappell Scholarship. The first award will take place in September 2007.

Students are hired as research assistants, interviewers, coders, data analysts, project coordinators and in other research-related roles.

Formal Programs

At the University of Victoria, students are normally admitted for graduate training by the teaching departments (e.g., geography, psychology, nursing, sociology). They must meet the degree requirements of the department and receive a disciplinary-based degree. A small number of students pursue multidisciplinary degrees by special arrangement. A total of 12 departments at the University offer training relevant to aging, with 19 advanced courses on aging and an additional 49 courses with a partial focus on aging. The Centre compiles an inventory of these instructional assets from the University Calendar and publishes it every two years to assist students and others interested in teaching on aging.

Research Affiliates of the Centre are extensively involved in training within their respective departments. They currently serve as primary supervisors for 23 master's, two doctoral, and one post-doctoral student.

The following theses were completed in 2005-2006 by students whose advisor is a research affiliate of the Centre:

Name	Degree	Supervisor
N. Bottiglia	M Ed	R. Bell
Y. Ji	MA	N. Chappell
J. Sturge	MSc	D. Cloutier-Fisher
K. Biagioni	MA	H. Foster
J. Chicanot	MADR	P. MacKenzie
N. Bogod	PhD	C. Mateer
G. Low	PhD	A. Molzahn
C. Dunegan-Smith	MA	P. Moss
M. Quinn	MN	P. Moss
A. Kliman	MA	R. Rhodes
R. Budd	MA	E. Sager
K. Cook	MA	E. Sager
A. Maberly	MA	P. Stephenson
L. Shumka	MA	P. Stephenson
N. Wilde	PhD	E. Strauss
S. Dai	PhD	M. Taylor
P. Ebert	PhD	H. Tuokko
M. Hodgson	MSc	P. Zehr
J. Balter	MSc	P. Zehr
P. Loadman	MSc	P. Zehr

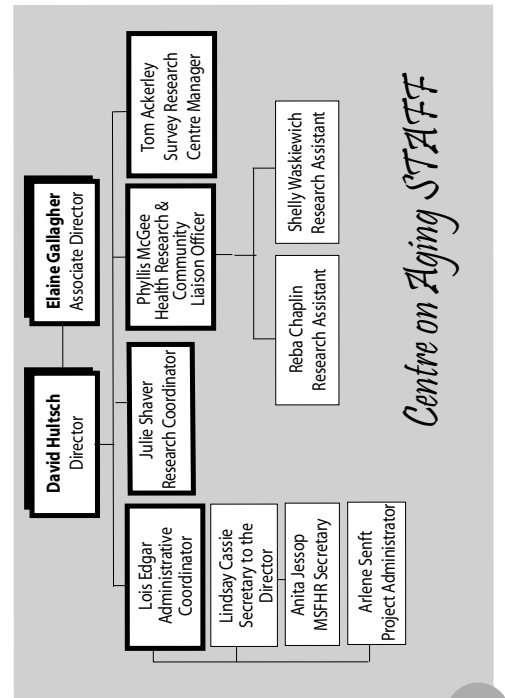
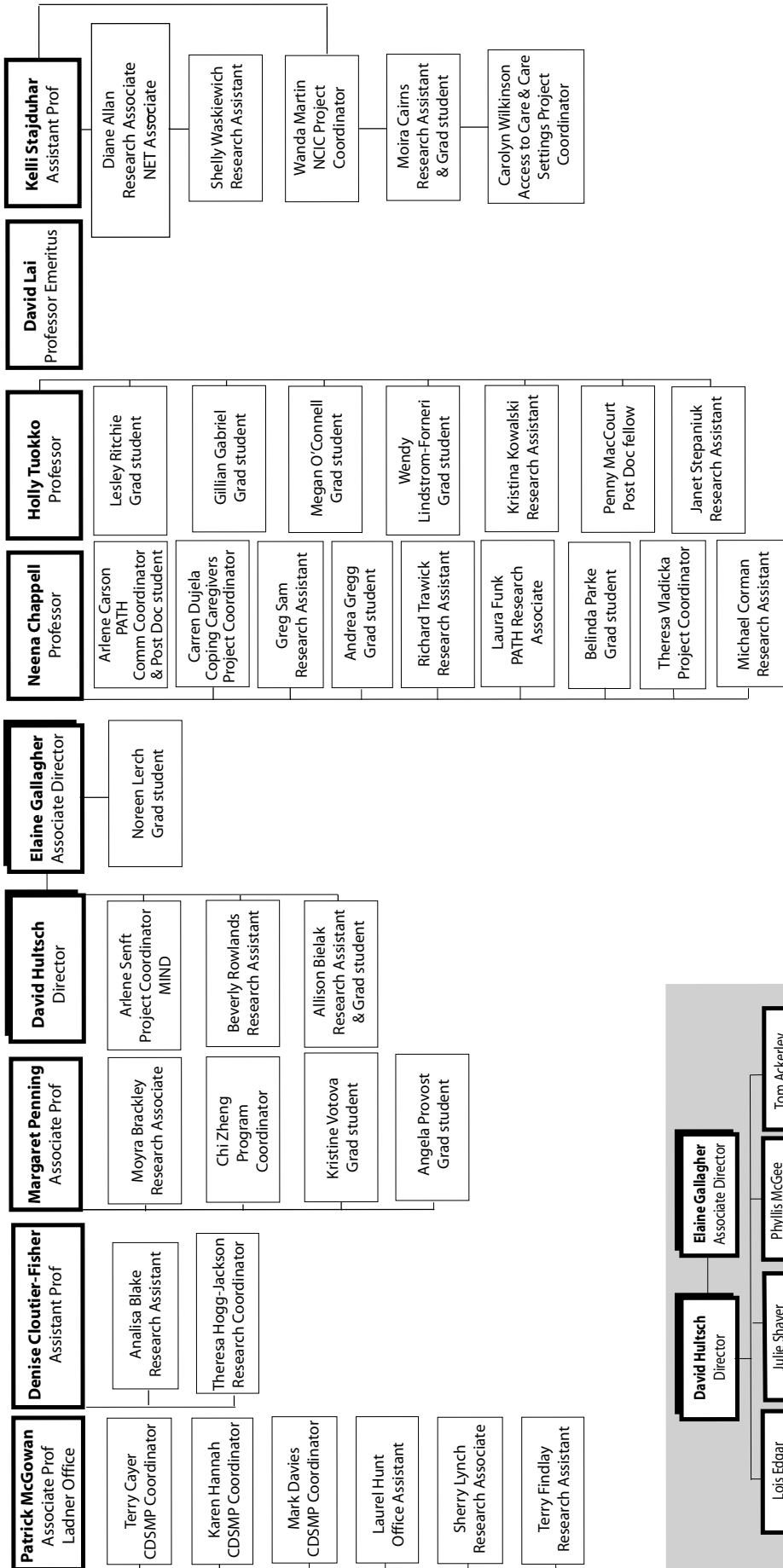
Postdoctoral Fellows

Arlene Carson, Postdoctoral Fellow, Supervisor N. Chappell
Penny MacCourt, Postdoctoral Fellow, Supervisor H. Tuokko

Student Employment

A substantial number of students at both the undergraduate and graduate levels are employed by Research Affiliates of the Centre or by the Centre itself in a variety of capacities. Students are hired as research assistants, interviewers, coders, data analysts, project coordinators and in other research-related roles. Most of these positions are funded by external research grants, but in recent years we have also employed students through a variety of other mechanisms such as co-op programs, the Federal government's summer program, and the University's work-study program.

Appendix A



*Who you will find housed at the
Centre on Aging's Offices*

Updated July 2006

Centre on Aging STAFF

Appendix B

New Research Grants Awarded in 2005/06

Principal Investigator	Co-Investigators	Title of Grant	Dates	Amount	Funder
K. Chou	N. Chappell & others	Measuring Individualized Care for Persons with Dementia in Long-Term Care Facilities: A Validation Study	2005-2006	HK\$94,000	University of Hong Kong
C. Wolfson S. Kirkland P. Raina	K. Stajduhar & others	Canadian Longitudinal Study on Aging: Developmental Activities Phase II	2005-2006	\$770,000	CIHR
N. Chappell M. Hollander		Evaluation of Veterans Affairs Canada & Government of Ontario Continuing Care Programs	2005-2007	\$900,000	Veteran Affairs Canada & the Government of Ontario
A. Molzahn	M. Pelletier Hibbert R. Starzomski D. Gaudet	Experiences with Chronic Kidney Disease and its Management	2005-2007	\$34,064	CIHR
M. Pelletier Hibbert	A. Molzahn R. Starzomski D. Gaudet	The Process of Living with Chronic Kidney Disease: The Family Perspective	2005-2007	\$33,404	Kidney Foundation of Canada
J. Kozak	N. Chappell E. Gallagher V. Scott & others	Closing the Knowledge Gap for Seniors & Community Care Collaborative	2005-2008	\$449,679	MSFHR
V. Scott I. Pike K. Belton L. Week	D. Smith	Canadian Falls Prevention Curriculum	2005-2008	\$360,000	Population Health Fund, Public Health Agency of Canada
J. Gutberlet	D. Cloutier-Fisher P. Keller R. Canesse & others	Participatory Sustainable Waste Management	2005-2011	\$1,500,000	Canadian International Development Agency through its University Partnerships in Cooperation and Development (UPCD) program
R. Rhodes		New Investigator Establishment Grant	2006-2007	\$50,000	CIHR
P. Marck	A. Molzahn N. Edwards E. Higgs	Ecological restoration and medication safety	2006-2008	\$128,192	SSHRC
A. Williams D. Wilson	N. Chappell D. Cloutier-Fisher & others	Timely Access and Seamless Transitions in rural Palliative/End-of-Life Care	2006-2010	\$798,915	CIHR
A. Chong	N. Chappell S. Hung Ng	Validating Measurement Tools for Caregiver Research	2006-2007	HK\$60,000	City University, Hong Kong
N. O'Rourke	N. Chappell L. Beattie	Psychological Resilience and the Well-Being of Spousal Caregivers of persons with Dementia	2006-2008	\$38,000	Lions Gate Healthcare Research Foundation
M. Penning	M. Brackley M. Lesperance	Health system change and cancer service utilization among older adults in British Columbia, 1986-2003	2006-2009	\$315,912	CIHR
K. Stajduhar	D. Cloutier-Fisher M. Purkis & others	Access to care at the end of life: Encounters between home care nurses and family caregivers	2006-2008	\$80,972	CIHR

Principal Investigator	Co-Investigators	Title of Grant	Dates	Amount	Funder
M. Penning Z. Wu	N. Chappell D. Cloutier-Fisher K. Kobayashi A. Smith	Frailty in Later Life: Meaning, Social Bases and Impact on Health Service Utilization	2006-2007	\$3,500	BC Network on Aging with funding from MSFHR
S. Thorne	K. Stajduhar & others	Communication in Cancer Care: The Trajectory of Interaction Between Patients and Health Care Professionals	2005-2008	\$210,543	CIHR
K. Stajduhar		CIHR New Investigator Award	2006-2011	\$250,000	CIHR
K. Stajduhar		MSFHR Scholar Award	2006-2011	\$400,000	MSFHR
K. Stajduhar		Incentive Award	2006-2011	\$56,250	MSFHR
K. Stajduhar		Establishment Grant	2006-2008	\$80,972	MSFHR
L. Gamroth		New Graduate Hire Initiative: Evaluation Research	2005-2006	\$13,000	VIHA
L. Gamroth		Developing Experts in Psycho-Geriatric Nursing	2006-2007	\$3,000	VIHA
	B.L. Beattie G. Gutman D. Hemingway D. Hultsch A. Wister	BC Network for Aging Research Infrastructure Grant	2006-2008	\$700,000	MSFHR
	P. MacKenzie L. McDonald & others	National Initiative for the Care of the Elderly (NICE) Network Grant	2006-2007	\$400,000 per year	Networks of Centres of Excellence -- New Initiative Program (NCE-NI), Government of Canada
C. McDonald M. McIntyre		Health experiences of adults aging with developmental disability	2006	\$34,523	Koerner Foundation, Toronto
P. McGowan D. Cloutier-Fisher		Seniors Preventative Health Intervention Program	2005	\$100,000	MSFHR
P. McGowan		Implementing Self-Management Programs in Nisga'a Territories	2005	\$30,000	BC Ministry of Health Services
P. McGowan		Diabetes Self-Management Programs in Aboriginal Communities	2005	\$60,000	Health Canada
P. McGowan		Implementation and Evaluation of Self-Management Programs in BC Health Regions	2006	\$1,000,000	BC Ministry of Health Services
E. Gallagher	H. Tuokko D. Cloutier-Fisher	World Health Organization – Age Friendly Cities	2006	\$20,000	World Health Organization
Z. Wu C. Costigan	S. Noh M. Ehrenberg	Development Grant - to develop grant proposal to study mental health of immigrant and refugee children	2005	\$4,000	MSFHR
Z. Wu		Development Grant - to develop grant proposal to study neighbourhood effects on mental health	2005	\$1,750	MSFHR

Principal Investigator	Co-Investigators	Title of Grant	Dates	Amount	Funder
Z. Wu		Study of racial/ethnic segregation and Canadian health disparities	2005-2006	\$4,000	SSHRC (Internal Research Grant)
L. Young J. Wharf-Higgins K. Humphries S. Cunningham		Lone mothers, social inclusion, and chronic diseases: A participatory, multimethod, cross-national research program	2005	\$10,000	CIHR ICE Grant Proposal Development
	C. Benoit & others	Women's Health Research Network	2005-2008	\$700,200	MSFHR
E.P. Zehr		Utilization of spinal circuitry and cutaneous feedback for recovery of walking after stroke	2005-2009	\$480,000	Heart and Stroke Foundation of Canada
R. Rhodes		Behavioural Medicine Laboratory Operating Grant	2005-2009	\$18,566	Canadian Foundation for Innovation
S. Bredin D. Warburton	R. Rhodes	Making an enemy our ally: A pilot study testing the effects of interactive video games on exercise preference in young girls and boys	2005-2006	\$17,800	Hampton Foundation
P.J. Naylor H. McKay	R. Rhodes J. Wharf-Higgins S. Manske	Evaluating the effectiveness of the dissemination of Action Schools! BC: A socio-ecological intervention to increase physical activity and healthy eating in school children	2005-2008	\$200,000	Heart and Stroke Foundation of Canada
P.J. Naylor H. McKay	R. Rhodes J. Wharf-Higgins S. Manske	Evaluating the effectiveness of the dissemination of Action Schools! BC: A socio-ecological intervention to increase physical activity and healthy eating in school children	2005-2008	\$400,000	CIHR
V. Temple	R. Rhodes P.J. Naylor J. Wharf-Higgins V. Pacini-Ketchabaw L. Wolsky	Healthy opportunities project for preschool children: A pilot of an environmentally-based physical activity and healthy eating intervention for daycare settings	2005-2006	\$49,995	CIHR
C. Blanchard	R. Rhodes K. McGannon J. Spence & others	Social ecological determinants of exercise during home-based cardiac rehabilitation: Should gender be considered?	2005-2008	\$145,000	SSHRC
M. Porter	H. Tuokko R. Rhodes & others	Quantifying mobility in older adults: A mixed modality approach	2006-2007	\$73,000	CIHR
R. Rhodes	D. Warburton	Evaluating television-based physical activity interventions in the family home	2006	\$4,000	University of Victoria Health Research Grants Applications Assistance Program
Z. Wu		Developmental Grant – to develop grant proposal to study the effects of ethnic neighbourhood and mental health	2006-2007	\$4,000	MSFHR

Principal Investigator	Co-Investigators	Title of Grant	Dates	Amount	Funder
C. Benoit H. Hallgrimsdottir		International workshop - Comparative Perspectives on Gender, Health Care Work and Social Citizenship Rights	2006-2007	\$10,000	CIHR
C. Benoit	M. Jansson L. Jackson F. Shaver	Reducing Health Disparities among People Working in the Sex Industry	2006-2007	\$10,000	CIHR Team Grant
C. Benoit M. Jansson		Do Street-Involved Youth become Street-Involved Adults?	2006-2007	\$5,022	BC Child and Youth Health Research Network (YHRNet) Network grant
C. McIntyre	R. Rhodes	The Relationship between Parental Efficacy and Child Physical Activity Participation: A pilot study in Greater Victoria	2006	\$4,000	Human Early Learning Partnership
C. Blanchard	R. Rhodes & others	Using a Social Ecological Approach to Explain Exercise Behaviour from a Gender Perspective in Cardiac Patients not Attending Cardiac Rehabilitation in Nova Scotia	2006-2009	\$150,000	Nova Scotia Health Research Foundation
R. Rhodes	P.J. Naylor H. McKay C. McIntyre	The Effectiveness of an Implementation Intention Intervention on Physical Activity Behaviours within the Family: A Pilot Study in Greater Victoria	2006-2008	\$28,311	Human Early Learning Partnership
J. Milliken	H. Tuokko B. Wilden P. MacCourt	Supporting Caregivers of Elderly People with Mental Illnesses and Addictions	2005	\$3,500	BC Mental Health and Addictions Research Network Development Funds
H. Tuokko	P. MacCourt J. Milliken B. Wilden	Understanding the needs of caregivers of mentally ill older adults: Hearing their voices to inform services	2006	\$50,000	BCMSF
C. Wolfson S. Kirkland	H. Tuokko P. Raina	Canadian Longitudinal Study on Aging, Developmental Activities- Phase II	2006-2008	\$2,100,000	CIHR
J. Storch P. Rodney	M. Prince	Leadership for Ethical Policy and Practice	2005-2008	\$164,851	CIHR
P. Moss	M. Prince	A Critical Inquiry into the Construction of Contested Illnesses: gender, medicine and culture."	2005-2008	\$161,778	SSHRC
M. Prince		Assessing Options for Reform of Disability Supports and Income	2005	\$11,000	Social Development Canada
Z. Wu	K. Thomas C. Burch	Regional variations in nonmarital cohabitation in Canada	2006-2009	\$82,274	SSHRC
M. Rioux	M. Prince	Monitoring Human Rights of People with Disabilities in Canada	2006-2011	\$998,884	SSHRC-CURA
Total amount				\$5,911,931.00	

Continuing Research Grants 2005/06

Principal Investigator	Co-Investigators	Title of Grant	Dates	Amount	Funder
C. Benoit		Health Youth Survey	2001-2006	\$220,000	CIHR
C. Benoit		Risky Business: Experiences of Youth in the Sex Trade	2001-2006	\$206,500	CIHR
D. Hultsch	E. Strauss M. Hunter	Inconsistency in the Cognitive Assessment of Patient Groups and Health Adults	2001-2007	\$370,312	CIHR
N. Chappell A. Best		Best Practices for Co-ordinated Health Promotion and Health Services in Midlife	2001-2006	\$2,503,545	CIHR
N. Chappell		Canada Research Chair – Tier I	2001-2008	\$1,400,000	SSHRC
R. Dixon	D. Hultsch	Longitudinal Study of Cognitive Aging	2002-2007	\$1,625,500	National Institute on Aging
P. Parfrey	A. Molzhan B. Barratt A. Levin C. Rigatto D. Churchill J. Singer H. Gerstein R. Goree	Canadian Collaborative Group for the Prevention of Illness in Chronic Renal Disease	2002-2007	\$1,200,000	CIHR
M. Manson-Hing F. Molnar S. Marshall K. Wilson L. Chambers I. Graham I. Stiell C. Crowder	H. Tuokko	Canadian Research Initiative for Vehicular Safety in the Elderly	2002-2007	\$1,250,000	CIHR
D. Bub N. Chappell & others		Research Unit Infrastructure Support	2003-2006	\$687,500	MSFHR
H. Bergman K. Wolfson	M. Penning & others	Canadian Initiative on Frailty	2003-2006	\$8,000 to Victoria	Max Bell Foundation
C. Benoit		Work, Health and Health Care Access in the US and Canada	2003-2006	\$300,000	CIHR
R. Rhodes		Research Grant	2003-2008	\$25,000	UVic
D. Hultsch	R. Rhodes M. Penning K. Kobayashi H. Tuokko & Others	Vulnerability and health of Individuals, Populations, and Systems	2003-2007	\$687,500	MSFHR
R. Rhodes		Infrastructure Grant	2003-2006	\$75,000	MSFHR
C. Blanchard J. Fisher	R. Rhodes	Does the theory of planned behavior moderate the relationship between ethnicity and moderately intense physical activity in college-aged students.	2003-2006	\$80,303	National Institutes of Health (U.S.) via the Research Center for Minority Institutions
E.P. Zehr		Reflex mechanisms of motor coordination during rhythmic human arm movement	2003-2007	\$148,000	Natural Sciences and Engineering Research Council of Canada Discovery Grant

Principal Investigator	Co-Investigators	Title of Grant	Dates	Amount	Funder
R. Cohen	K. Stajduhar & others	Improving Quality of Life and Informing Social Policy in Palliative Care: Team Infrastructure Funding	2003-2006	\$356,000	Sociobehavioural Cancer Research Network, National Cancer Institute of Canada (NCIC)
P. Kirk F. Lau	M. Purkis & others	Overcoming barriers to communication through palliative transitions	2003-2008	\$54,000	CIHR – NET Grant
C. Gaffield	E. Sager & others	The Canada Century Research Infrastructure Project	2003-2009	\$2,000,000 to UVic	Canada Foundation for Innovation (CFI)
P. McGowan		Implementation and Evaluation of Self-Management Programs in BC Health Regions	2003-2006	\$900,000	BC Ministry of Health
H. Arthur K. King	L. Young & others	Training program for the development of cardiovascular nursing research capacity in Canada	2003-2009	\$1,800,000	Institute for Circulatory and Respiratory Health/Heart and Stroke Foundation Fund
P. McGowan	B. Leslie J. Lu M. Bradshaw F. Hensen A. Dauphinee	Effectiveness of Self-Management Training for Person with Type 2 Diabetes	2004-2006	\$50,000	BC Medical Services Foundation
D. Stienstra	M. Prince	Strengthening a Canadian Research Network on Disability and Inclusion Indicators	2004-2006	\$390,000	Social Development Canada
C. Wolfson S. Kirkland P. Raina	H. Tuokko M. Penning D. Cloutier-Fisher & others	Canadian Longitudinal Study on Aging, Developmental Activities – Phase I	2004-2008	\$1,744,000	CIHR
P. Keller	D. Cloutier-Fisher R. Copes B. Klinkenberg S. Mak E. Setton S. Kirkland	Geographic Data for Georgia Basin Puget Sound International Air Shed	2004-2006	\$69,000	Health Canada
D. Cloutier-Fisher S. Grzybowski F. MacPhail		BC Rural & Remote Health Research Network	2004-2006	\$850,000	MSFHR Infrastructure Grant (administered by UNBC)
R. Beaujot	R. Bourbeau C. Le Bourdais F. Trovato Z. Wu D. Cloutier-Fisher	Population Change and Public Policy	2004-2007	\$40,000	SSHRCC
R. Rhodes	C. Blanchard K. Courneya R. Plotnikoff	Development of a theory-based leisure-time walking program	2004-2006	\$95,000	SSHRCC
R. Rhodes		Establishment Grant	2004-2007	\$18,500	MSFHR
	P. MacKenzie B. Whittington L. Brown T. Pearson	Supporting Grandparents Raising Grandchildren	2004-2006	\$58,000	Vancouver Island Strategic Investment Initiatives Fund: Queen Alexandra
	P. MacKenzie	Overcoming Barriers to	2004-2009	\$1,600,000	Canadian Institutes

Principal Investigator	Co-Investigators	Title of Grant	Dates	Amount	Funder
	F. Lau P. Kirk M.E. Purkis	Communication through End-of-Life			for Health Research: New Emerging Teams
L. McCarter D. Nutting	P. MacKenzie	Enhancing Recreation and Leisure Activities for Socially Isolated Seniors and People with Disabilities	2005-2006	\$23,813	New Horizons Canada: Health and Welfare Canada
D. Hultsch		Aging and Reaction Time Inconsistency	2004-2009	\$50,000	Natural Sciences and Engineering Research Council of Canada
P. Kirk		Overcoming barriers to effective communication through the transitions of end of life and palliative care	2004-2009	\$1,400,000	CIHR NET grant
K. Stajduhar	G. Fyles D. Barwich	Family Caregiver Coping in End-of-Life Cancer Care	2004-2007	\$301,182	National Cancer Institute of Canada
S. Dumont P. Jacobs K. Fassbender P. Villeneuve	K. Stajduhar C. Brenneis F. Burge M. Deschamps R. Fainsinger M. Harlos G. Johnson L. McManus J. Penrod	Palliative Care in Canada: The Economic Perspective	2004-2006	\$274,514	CIHR
K. Stajduhar R. Cohen	N. Chappell P. Koop A. Williams D. Heyland	Family Caregiving in Palliative and End-of-Life Care: A New Emerging Team	2004-2009	\$1,361,361	CIHR
A. Becker	C. Benoit H. Dean A. Kozyrskyj G. Marchessault A. Sandford E. Sellers A. Soussi Gounni S. Taback C. Taylor	Adolescent Females, Obesity and Asthma: An Inflammatory State	2004-2008	\$1,100,000	CIHR (ICE Grant)
C. Benoit	D. Carroll	Social Determinants of Health and their Impact on Post-Partum Morbidity Among Midwifery, Physician and Obstetric Clients in British Columbia	2004-2006	\$25,792	Health Canada
L. Gamroth	J. Guy H. Cook B. Butler	Convalescent Care Unit Oak Bay Lodge: Evaluation Research	2004-2006	\$25,000	VIHA
	B.L. Beattie G. Gutman D. Hemingway D. Hultsch A. Wister	BC Network for Aging Research Infrastructure Grant	2005-2006	\$300,000	MSFHR
A. Molzahn	M. Pelletier Hibbert D. Guadet R. Starzomski	Experiences with Chronic Kidney Disease and its Management (qualitative aspects of CanPREVENT project)	2005-2008	\$34,064	CIHR NET grant

Principal Investigator	Co-Investigators	Title of Grant	Dates	Amount	Funder
C. Wolfson S. Kirkland P. Raina	K. Stajduhar & others	Canadian Longitudinal Study on Aging: Developmental Activities – Phase II	2005-2006	\$770,000	CIHR
S. Thorne	K. Stajduhar S. Harris G. Hislop C. Kim-Sing J. Oliffe	Communication in Cancer Care: The Trajectory of Interaction between Patients and Health Care Professionals	2005-2008	\$210,543	CIHR
B. Spencer	K. Kobayashi & others	SEDAP (Social and Economic Dimensions of an Aging Population) II – Canada in the 21st Century: Moving Towards an Older Society	2005-2010	\$2,498,000	SSHRCC
D. Cloutier-Fisher K. Kobayashi	C. Benoit N. Chappell	Making meaningful connections: A pilot study of a telenurse outreach intervention for socially isolated older adults in British Columbia	2005-2006	\$50,000	CIHR
D. Cloutier-Fisher K. Kobayashi	C. Benoit N. Chappell	Making meaningful connections: A pilot study of a telenurse outreach intervention for socially isolated older adults in British Columbia	2005-2006	\$50,000 (matching funds)	BC Ministry of Health Services
C. Benoit L. Graves O. Hankivsky J. Johnson		Women's Health Research Network Grant	2005-2006	\$300,200	
	G. Charles L. Bainbridge J. Gilbert M. Purkis P. MacKenzie & others	The BC Network for Interprofessional Education for Collaborative Patient-Centred Practice: Building Capacity and Fostering System Change	2005-2007	\$1,196,000	Health Canada: Health and Human Resources Strategies Division
P. Moss	M. Prince	A Critical Inquiry into the Construction of Contested Illness: Gender, Medicine and Culture	2005-2008	\$162,000	SSHRCC
N. Chappell	C. Reid H. Kadlec	Individualized Care for Dementia Sufferers in Long-Term Care – What's Best for the Resident?	2005-2008	\$316,000	CIHR
K. Hallgrimsdottir	C. Benoit	Mothers and Workers? Women's Movements and the Gendered Development of Social Rights in Canada, Sweden, and Iceland, 1870-1900 and 1940-1950.	2005-2008	\$76,135	
J. Moreau	C. McDonald & others	Expanding Horizons for Student Nurses: Mental Health and Care of Older Adults as a Placement Choice	2005-2007	\$50,000	Practice Education Innovation Funding

Principal Investigator	Co-Investigators	Title of Grant	Dates	Amount	Funder
P. Kirk		Michael Smith Foundation grant for Health Authority research capacity building in VIHA	2005	\$350,000	MSFHR

Appendix C

Research Grants Completed in 2005-2006

Principal Investigator	Co-Investigators	Title of Grant	Dates	Amount	Funder
N. Chappell		Caregivers – Why Some Cope Well	2002-2005	\$101,467	SSHRCC
M. Penning	N. Chappell Z. Wu J. Gartrell M. Brackley D. Cloutier-Fisher	Health-Care Restructuring: Impact on Vulnerable Older Adults	2002-2005	\$320,355	CIHR
D. Cloutier-Fisher	P. MacKenzie	Home Sweet Home: Experiences for place of Elderly in-migrants and aged-in-place persons in Small town British Columbia	2002-2005	\$60,000	SSHRCC
I. McDowell	H. Tuokko J. Lindsay R. Verreault K. Rockwood J. Fish L. Chambers P. Raina	Cognition in Canada: Analyses of CSHA Results	2002-2005	\$346,874	CIHR
C. Benoit		The Impact of Stigma on Marginalized Populations' Work, health and Access to Health Services	2002-2005	\$256,269	CIHR
Z. Wu		The Consequences of Union Disruption for Women and Children in Canada	2002-2005	\$65,929	SSHRCC
R. Starzomski	A. Molzhan J. McCormick R. Jefferson B. Budz	Organ Donation: A Cross Canada Perspective	2002-2005	\$80,946	Kidney Foundation of Canada
L. Young	A. Molzhan R. Starzomski S. Parker B. Budz	Families and Health Care: Explicating the Health Care Experiences of Heart Transplant Recipients and their Families	2002-2005	\$72,588	Heart and Stroke Foundation
P.J. Milliken	M. McDonald R. Schreiber	The Nature of Theory in Grounded Theory	2003-2005	\$2,770	SSHRCC
P. Stephenson		New Lands and Contested Identities: Living in Flevoland, the Netherlands	2003-2005	\$65,878	SSHRCC
E. Strauss	D. Hultsch M. Hunter	Inconsistency in Cognitive Performance as a Predictor of Functional Decline in Dementia	2003-2005	\$98,688	Alzheimer's Society of Canada
D. Warburton	R. Rhodes W. Sheel	Effect of two exercise training programmes on central and peripheral limitations to exercise capacity in spinal cord injured individuals	2003-2005	\$61,333	BC Neurotrauma Fund
E.P. Zehr		Cutaneous stimulation to improve coordination after stroke	2002-2005	\$184,000	Heart and Stroke Foundation of Canada (BC & Yukon)
C. Wolfson S. Kirkland P. Raina	K. Stajduhar E. Strauss D. Hultsch & others	Canadian Longitudinal Study on Aging, Developmental Activities – Phase I	2004-2005	\$974,000	CIHR

Principal Investigator	Co-Investigators	Title of Grant	Dates	Amount	Funder
R. Beaujot	Z. Wu R. Bourbeau C. Le Bourdais F. Trovato	Study of Population Change and Public Policy	2004-2005	\$30,000	SSHRCC
H. McKay	R. Rhodes	Action Schools! BC: A multi-health outcome physical activity program for children and youth in BC.	2004-2005	\$178,375	Provincial Health Services Authority
R. Rhodes		Evaluating the Behavioural Economics of Leisure Time Physical Activity	2004-2005	\$5,000	MSFHR
Z. Wu		Study of Nonmarital Cohabitation in Canada	2004-2005	\$4,000	SSHRCC
Z. Wu		Study of Elderly Immigrants and Health Care Utilization in British Columbia	2004-2005	\$16,923	Research on Immigration and Integration in the Metropolis
E.P. Zehr		Alternatives to Treadmill Training for Recovery of Walking After Spinal Cord Injury	2004-2005	\$5,000	Christopher Reeve Paralysis Foundation
M. Prince		Toward a National Cancer Control Strategy for Canada	2004-2005	\$15,000	National Cancer Institute of Canada
M. Stienstra	M. Prince & others	Disability Studies in Canada	2004-2005	\$30,000	SSHRCC
Rideau Strategy Associates	M. Prince	Evaluation Design of the Canada Pension Plan Disability Program	2004-2005	\$35,000	Social Development Canada
M. Stienstra	M. Prince & others	Strengthening a Canadian Research Network on Disability and Inclusion Indicators	2004-2005	\$390,000	Social Development Canada
V. Scott K. Votova E. Gallagher	H. Bawa F. Rajabali G. Hong	Strategies and Actions for Independent Living. RCT of effectiveness of training & multifactorial intervention to reduce falls and injuries among home support clients	2004-2005	\$163,000	Vancouver Foundation / Canadian Nurses Foundation / Interior Health Authority / Ministry of Health
L. Gamroth		Seven Oaks Tertiary Care Program: Research Evaluation	2004-2005	\$20,000	VIHA
P. Moss	K. Teghtsoonian	Illness and the Contours of Contestation: Diagnosis, Experience, Policy -- Workshop	2005	\$10,000	CIHR-IGH
P. Moss	K. Teghtsoonian	Illness and the Contours of Contestation: Diagnosis, Experience, Policy -- Workshop	2005	\$20,000	SSHRCC
D. Hultsch	P. McGee D. Allan	An examination of the Current State of Adult Day Care Centres within VIHA South Island	2005	\$8,000	VIHA

Principal Investigator	Co-Investigators	Title of Grant	Dates	Amount	Funder
V. Scott E. Gallagher	D. Smith	Taking Steps for the Future: Provincial Falls Prevention Planning	2005	\$25,000	Public Health Agency of Canada, Western Region / Ministry of Health Services
E.P. Zehr	D.P. Ferris R. Rhodes	Efficacy of coupled rhythmic arm and leg movement as an alternative to body weight supported walking training for recovery of walking after incomplete spinal cord injury	2005-2006	\$35 000	Rick Hansen Man in Motion Foundation
H. Kadlec		Individual Research Grant	2001-2006	\$80,000	NSERC

Appendix D

Articles Published in Refereed Journals June 2005 - June 2006

- Allison, M., Brimacombe, E., Hunter, M., & Kadlec, H. (2006). Young and older adult eyewitnesses' use of narrative features in testimony. *Discourse Processes*. 41(3): 289–314.
- Archibald, S.J., Kerns, K.A., Mateer, C.A. & Ismay, L., (2005). Evidence of utilization behavior in children with ADHD. *Journal of the International Neuropsychological Society*. 11: 367–375.
- Arguin, M., & Bub, D. (2005). Parallel processing blocked by letter similarity in letter by letter dyslexia: A replication. *Cognitive Neuropsychology*. 22(5): 589-602.
- Bailey, T.M. & Ries, N.M. (2005). Legal issues in patient safety: The example of nosocomial infection. *Healthcare Quarterly*. Vol 8. (Special Edition) 140.
- Benoit, C., Wrede S., Bourgeault, I., Sandall, J., VanTeijlingen, E. & DeVries. R. (2005). Understanding the social organisation of maternity care systems: Midwifery as a touchstone. *Sociology of Health & Illness*. 27(6): 722-737.
- Benoit, C., & Phillips, R. (2005). Social determinants of health care access among sex industry workers in Canada. *Sociology of Health Care*. 23: 79-104.
- Benoit, C., Jansson, M., Millar, A. & Phillips, R. (2005). Community academic research on hard to reach populations: Benefits and challenges. *Qualitative Health Research*. 15(2): 263 282.
- Blanchard, C. M., McGannon, K.R., Spence, J.C., Rhodes, R.E., Nehl, E., Baker, F., & Bostwick, J. (2005). Social ecological correlates of physical activity in normal weight, overweight, and obese individuals. *International Journal of Obesity*. 29: 720-726.
- Brooke, J.D., & Zehr, E.P. (2006) Limits to somatosensory feedback control of movement. *Exercise & Sports Scientific Revue*. 34: 22-28.
- Brown, S.G. & Rhodes, R.E. (2006). Relationships among dog ownership and leisure time walking in Western Canadian adults. *American Journal of Preventive Medicine*. 30: 131-136.
- Bub, D. N., Masson, M. E. J., & Lalonde, C. E. (2006). Cognitive control in children: Stroop interference and suppression of word reading. *Psychological Science*, 17, 351-357.
- Burton, C. L., Strauss, E., Hultsch, D. F., Moll, A., & Hunter, M. A. (2006). Intraindividual variability as a marker of neurological dysfunction: A comparison of Alzheimer's disease and Parkinson's disease. *Journal of Clinical and Experimental Neuropsychology*. 28: 67-83.
- Carroll, T.J., Baldwin, E.R.L., Collins, D.F., & Zehr, E.P. (2006) Corticospinal excitability is lower during rhythmic arm movement than during tonic contraction. *Journal of Neurophysiology*. 95: 914-921
- Chappell, N.L., Funk, L., Carson, A., Mackenzie, P., & Stanwick, R. (2005). Multi-level community health promotion: How can we make it work? *Community Development Journal*, 1-15.
- Christensen, K.M., Mateer, C.A., Williams, W.R., & Woodward, T.S. (2005). Neuropsychological deficits, syndromes, and cognitive competency in Schizophrenia. *Cognitive Neuropsychiatry*. 10(5): 361-378.
- Cloutier-Fisher, D. & Skinner, M. (2006). Leveling the playing field? Exploring the implications of managed competition for voluntary sector providers of long-term care in small town Ontario. *Health and Place*. 12: 97-109.
- Cloutier-Fisher, D. (2005). Different strokes: need for help among stroke-affected persons in British Columbia. *Canadian Journal of Public Health*. 96, 3, May/June, 221-225.

- Dolan, A.H., Taylor, M., Neis, B., Ommer, R., Eyles, J., Schneider, D. & Montevecchi, B. (2005). Restructuring and health in Canadian coastal communities. *EcoHealth*. 2: 1-15.
- Fiset, D., Arguin, M., Bub, D., Humphreys, G. & Riddoch, J. How to make the word-length effect disappear in letter-by-letter dyslexia: Implications for an account of the disorder. *Psychological Science*. 16(7): 535-541.
- Frerichs, Robert J. & Tuokko, H. (2006). Reliable change scores and their relation to perceived change in memory: Implications for the diagnosis of mild cognitive impairment. *Archives of Clinical Neuropsychology*. 21: 109-115.
- Gustafson, S.L. & Rhodes, R.E. (2006). Parental correlates of physical activity in children and early adolescents. *Sports Medicine*. 36: 79-97.
- Haridas, C., Zehr, E.P., & Misiaszek, J.E. (2005). Postural uncertainty leads to dynamic control of cutaneous reflexes from the foot during human walking. *Brain Research*. 1062: 48-62.
- Househ, M. & Lau, F. (2005). Collaborative technology use by health care teams. *Journal of Medical Systems*. 29(5): 449-461.
- Hultsch, D., Williams, B.R., Strauss, E., Hunter, M.A., & Tannock, R. (2005). Inconsistency in reaction time across the lifespan. *Neuropsychology*. 19: 88-96.
- Kobayashi, K.M. & Prus, S.G. (2005). Explaining the health gap between Canadian- and foreign-born older adults: Findings from the 2000/2001 Canadian Community Health Survey. *Recent Advances and Research Updates: Journal of the International Research Promotion Council*. 6(3):269-273.
- Kuziemsky, C., Lau, F. & Leung, R. (2005). A review on personal digital assistants in healthcare. *Journal of Medical Systems*. 29(4): 334-352.
- LaChapelle, D. & Hadjistavropoulos, T. (2005). Age-related differences among adults coping with pain: Evaluation of a developmental life-context model. *Canadian Journal of Behavioural Science*. 37: 123-137.
- Lagerquist, O., Zehr, E.P., Collins, D.F., Baldwin, R.L., & Klacowicz, P.M. (2006) Diurnal changes in the amplitude of the Hoffmann reflex in human soleus but not flexor carpi radialis muscle. *Experimental Brain Research*. 170: 1-6.
- Lagerquist, O., Zehr, E.P., & Docherty, D. (2006) Increased spinal reflex excitability is not responsible for neural plasticity underlying the cross education effect. *Journal of Applied Physiology*. 100: 83-90.
- Lau, F. (2006). A collaborative approach to building capacity in health informatics. *Electronic Healthcare*. 4(4): 88-93.
- Lau, F., Protti, D., & Coward, P. (2005). A review of information management practices in health ministries. *Health Care Management Forum*. 18(2): 14-21.
- Martin, R., Hadjistavropoulos, T. & McCreary, D. (2005). Fear of pain and fear of falling among younger and older adults with musculoskeletal pain conditions. *Pain Research and Management*. 10: 211-218.
- Martin, R., Williams, J., Hadjistavropoulos, T., Hadjistavropoulos, H.D., & MacLean, M. (2005). A qualitative investigation of seniors' and caregivers' views on pain assessment and management. *Canadian Journal of Nursing Research*. 37: 142-164.
- Martin, W. & Degner, L. (2006). Perception of risk and surveillance practices of women with a family history of breast cancer. *Cancer Nursing*. 29(3): 227-235.
- Mateer, C.A., Sira, C.S., & O'Connell, M.E. (2005). Putting humpty together again: The importance of integrating cognitive and emotional interventions. *Journal of Head Trauma Rehabilitation*. 20(1): 62-75.
- McDonald, C. (2006). Lesbian disclosure: Disrupting the taken for granted. *Canadian Journal of Nursing Research*. 38(1): 42-57.
- McGee, P., Tuokko, H., MacCourt P. & Donnelly, M. (2005). Factors affecting the mental health of older adults in rural and urban communities: An exploration. *Canadian Journal of Community Mental Health*. 23(2): 117-126.
- McGowan, P. (2005). Evaluation of a diabetes self-management program. *Diabetes Quarterly*. Spring: 4-5.

- McMahon, M. (2005). Engendering organic farming. *Feminist Economics*. 11(3): 134-140.
- Michel, J.A., Kerns, K.A., & Mateer, C.A. (2005). The effect of reinforcement variables on inhibition in children with ADHD. *Child Neuropsychology*. 11: 295-302.
- Molzahn, A.E., Starzomski, R., McDonald, M., & O'Loughlin, C. (2005). Ethnocultural beliefs regarding organ donation in Indo-Canadians. *Progress in Transplantation*. 15: 233 - 239.
- Molzahn, A.E. (2005). Commentary on 'decision-making in Taiwanese hemodialysis patients'. *Western Journal of Nursing Research*. 27: 930-932.
- Pai, H. & Lau, F. (2005). Web-based electronic information systems for prostate cancer patients. *Canadian Journal of Urology*. 12(3): 2700-2709.
- Pichora, D., Heyland, D., Allan, D., & Stajduhar, K.I., (2005). End of life care in Canada: Family caregivers' perspectives of hospital care. *Journal of Palliative Care*. 21(3): 205.
- Power, M., Quinn, K., Schmidt, S. & WHOQOL-OLD Group (2005). The development of the WHOQOL-OLD module. *Quality of Life Research*. 14: 2197-2214.
- Rhodes, R.E. (2006). The built-in environment: The role of personality with physical activity. *Exercise and Sport Sciences Reviews*. 34: 83-88.
- Rhodes, R.E., Blanchard, C.M., Matheson, D.H. & Coble, J. (2006). Disentangling motivation, intention, and planning in the physical activity domain. *Psychology of Sport and Exercise*. 7: 15-27.
- Rhodes, R.E., Blanchard, C.M. & Matheson, D.H. (2006). A multi-component model of the theory of planned behaviour. *British Journal of Health Psychology*. 11: 119-137.
- Rhodes, R.E., Matheson, D.H. & Blanchard, C.M. (2006). Beyond scale correspondence: A comparison of continuous open scaling and fixed graded scaling when using social cognitive constructs in the exercise domain. *Measurement in Physical Education and Exercise Science*. 10: 13-39.
- Ries, N.M. (2005). Quarantine and the law: The 2003 SARS experience in Canada (A new disease calls on old public health tools.) *Alberta Law Review*. 43(2): 511.
- Ries, N.M. (2005). Regulation of human stem cell research in Canada and Japan: A comparative analysis. *University of New Brunswick Law Journal*. 4: 62.
- Ries, N.M. & Caulfield, T. (2005). Legal foundations of a national public health agency in Canada. *Canadian Journal of Public Health*. 96: 281
- Ries, N.M. (2006). Patient privacy in a wired (and wireless) world: Approaches to consent in the context of electronic health records. *Alberta Law Review*. 1(43): 3
- Sawchyn, J., Mateer, C.A. & Suffield, J.B. (2005). Awareness, emotional adjustment and injury severity in post-acute brain injury. *Journal of Head Trauma Rehabilitation*. 20 (4): 301-314.
- Skelton, R., Ross, S., Livingstone, S., & Nerard, L. (2006). Human spatial navigation deficits after traumatic brain injury shown in the arena maze: A virtual Morris water maze. *Brain Injury*. 20 (2): 189-203.
- Stajduhar, K.I., Chappell, N., Cohen, R., Heyland, D., Koop, P., & Williams, A. (2005). Family caregiving in palliative and end of life care: A new emerging team. *Journal of Palliative Care*. 21(3): 219.
- Tuokko, H., Gabriel, G. & the CSHA Neuropsychology Working Group (2006). Neuropsychological detection of cognitive impairment: Inter-rater reliability and factors affecting clinical decision-making. *Journal of the International Neuropsychological Society*. 12(1): 72-79
- Van Rooij, I., Stege, U., & Kadlec, H. (2005). Sources of complexity in subset choice. *Journal of Mathematical Psychology*. 49: 160-187.

- Wallin, L., Profetto-McGrath, J., & Levers, M.J. (2005). Implementing nursing practice guidelines: A complex undertaking. *Journal of Wound and Ostomy Care*. 32(5): 294-301.
- Williams, A., Stajduhar, K.I., Cohen, R., & Heyland, D. (2005). An evaluation of Canada's Compassionate Care Benefit (CCB): A pilot study. *Journal of Palliative Care*. 21(3): 206.
- Williams, J., Hadjistavropoulos, T., & Asmundson, G. (2005). The effects of age and fear of pain on attentional and memory biases relating to pain and falls. *Anxiety, Stress and Coping*. 18: 53-69.
- Wu, Z. & Schimmele, C.M. (2006). Psychological Disposition and Self-Reported Health Among the 'Oldest Old' in China. *Ageing & Society*. 26: 135-151.
- Wu, Z.. (2005). Generalized Linear Models in Family Studies. *Journal of Marriage and Family*. 67(4): 1029-1047.
- Young, L.E., Cunningham, S. & Buist, D. (2005). Lone mothers are at higher risk for cardiovascular disease compared to partnered mothers. Data from the National Health and Nutrition Examination Survey III (NHANES III). *Health Care for Women International*. 26: 604-621.
- Young, L.E. (2005). Women's health and cardiovascular care. *Canadian Journal of Cardiovascular Nursing*. 15: 33.
- Young, L.E. (2005). Research Column: Participatory Action Research (PAR): A strategy for women's health research in the cardiovascular field? *Canadian Journal of Cardiovascular Nursing*. 15(3): 63.
- Young, L.E. (2006). Participatory Action Research (PAR): A research strategy for nursing? *Western Journal of Nursing Research*. 28(5): 1-6.
- Young, L.E., Siden, H., & Tredwell, S.J. (2006). Fitting technology to context: Post-surgical telehealth support of children and family caregivers. *Journal of Telemedicine and Telecare*. 12: 5.
- Wharf-Higgins, J., Young, L.E., Naylor, P.J., & Cunningham, S. (2006). Out of the mainstream: Low-income lone mothers' life experiences and perspectives on heart health. *Health Promotion Practice*. 7(2): 221-233.

Books, Chapters, Monographs

- Algom, D., Eidels, A., Townsend, J.T., & Kadlec H. (2005). Independent parallel channels predict the Stroop effect. In J.S. Monahan, S.M. Sheffert, & J.T.Townsend (Eds.) *Fechner Day 2005: Proceedings of the 21st Annual meeting of the International Society for Psychophysics*. (pp. 23-28). Traverse City, Michigan: Central Michigan University Printing Services.
- Bruce, A, McDonald, C., & McIntyre, M. (2005). Opening conversations: Dilemmas and possibilities of spirituality and spiritual care. In M. McIntyre, E. Thomlinson, and C. McDonald (Eds.). *Realities of Canadian Nursing: Professional, practice and power issues*. (2nd Edition). (pp. 434-448). Philadelphia: Lippincott Williams and Wilkins.
- Chappell, N.L., & Penning, M.J. (2005). Family Caregivers in the Context of Health Reform. *The Cambridge Handbook of Age and Ageing*, M.L. Johnson, (ed. in chief). (pp 455-462). Cambridge University Press: Cambridge, UK.
- Chappell, N.L. & Parmenter, G. (2005). The Challenge of Caregiving. In V. Minichiello and I. Coulson (Eds.) *Contemporary Issues in Gerontology: Promoting Positive Ageing*. (pp. 167-189). Australia: Allen & Unwin.
- Chappell, N.L., MacDonald, L., & Stones, M. (2006). *Aging in Contemporary Canada*, 2nd Edition, Toronto, Canada: Pearson Educational.
- Fowler, J. Cloutier-Fisher, D., Foster, L., Keller, C.P., McKee, B., Virtue, N., et al. (2005). *British Columbia Atlas of Mortality, 1989-2002*, On-line atlas containing static and interactive and downloadable maps. URL: <http://www.geog.ubc.ca/mortality>.
- Gee, E.M., Kobayashi, K.M. & Prus, S.G. (2006). Ethnic Inequality in Canada: Economic and Health Dimensions. In J.R. Kesselman and D. Green (eds.), *Handbook of Inequality in Canada*. (pp. 249-271). Vancouver: UBC Press.
- Hadjistavropoulos, T. (2005). Assessing pain in older persons with severe limitations in ability to communicate. In S. Gibson and D. Weiner (Eds). *Pain in the elderly*. (pp. 135-151). Seattle: IASP Press.

- Hultsch, D. F., Hunter, M. A., MacDonald, S.W.S., & Strauss, E. (2005). Inconsistency in response time as an indicator of cognitive aging. In J. Duncan, L. Phillips, & P. McLeod (Eds), *Measuring the mind*. (pp. 33-58). Oxford, UK: Oxford University Press.
- Joseph, A.E. & Cloutier-Fisher, D. (2005). Ageing in rural communities: vulnerable people in vulnerable places. In G. Andrews & D.R. Phillips (Eds.), *Ageing and Place: Perspectives, Policy and Practice* (pp. 133-146). Routledge Studies in Human Geography: London.
- Kobayashi, K.M., Okabe, T., Takahashi, K. & Richardson, E. (2005). People of Japanese Descent. In J. Anderson, N. Waxler-Morrison, E. Richardson, and N. Chambers (eds.), *Cross-Cultural Caring: A Handbook for Health Professionals in Western Canada*, 2nd Edition (pp. 163-196). Vancouver, BC: UBC Press.
- Lau, F. (2006). Informatics and the electronic age. In Molzahn, A. (ed). *Contemporary Nephrology Nursing*, 2nd Edition, ANNA Publications 2006.
- Mateer, C.A. (2006). Fundamentals of cognitive rehabilitation. In P.W. Halligan & D. Wade (eds.), *The Effectiveness of Rehabilitation for Cognitive Deficits*. (pp. 21-30). New York: Oxford University Press.
- McIntyre, M. McDonald, C. (2005). The nurse practitioner movement: Recurring issues. In M. McIntyre, E. Thomlinson and C. McDonald (Eds.). *Realities of Canadian Nursing: Professional, practice and power issues*. (2nd Edition). Philadelphia: Lippincott Williams and Wilkins.
- McIntyre, M., Thomlinson, E., & McDonald, C. (Editors) (2005). *Realities of Canadian Nursing: Professional, Practice and Power Issues* (2nd Edition). Philadelphia: Lippincott Williams and Wilkins.
- McDonald, C. McIntyre, M. & Thomlinson, E. (2005). Professional, practice and power issues: Thinking back, looking ahead. In M. McIntyre, E. Thomlinson, and C. McDonald (Eds.). *Realities of Canadian Nursing: Professional, practice and power issues*. (2nd Edition). Philadelphia: Lippincott Williams and Wilkins.
- Molzahn, A.E., & Butera, E. (Eds.). (2006). *Contemporary Nephrology Nursing: Principles and Practice*. (2nd ed.). Pitman, NJ: American Nephrology Nurses Association.
- Molzahn, A.E. (2005). Management of clients with renal disorders. In Black, J.M., & Hawks, J.H. (Eds.). *Medical surgical nursing: Clinical management for positive outcomes*. (7th ed.) (pp. 913-940). Philadelphia: Elsevier Saunders.
- Molzahn, A.E. (2005). Management of clients with renal failure. In Black, J.M., & Hawks, J.H. (Eds.). *Medical surgical nursing: Clinical management for positive outcomes*. (7th ed.) (pp. 941-972). Philadelphia: Elsevier Saunders.
- Molzahn, A.E. (2006). Fluid, electrolytes and acid-base balances. In J.C. Ross-Kerr & M.J. Wood, (Eds). *Canadian Fundamentals of Nursing*. (3rd ed). (pp. 1144-1208). Toronto: Elsevier Mosby.
- Molzahn, A.E. (2006). Quality of life: The goal of chronic disease management. In Molzahn, A.E., & Butera, E. (2006). *Contemporary nephrology nursing: Principles and practice* (pp. 343-358). Pitman, NJ: American Nephrology Nurses Association.
- Moss, P. (2005). A Bodily Notion of Research: Power, Difference and Specificity in Feminist Methodology, in L. Nelson and J. Seager (eds.), *A Companion to Feminist Geography*, (pp. 41-59). London: Blackwell.
- Rubenstein, L., Stevens, J., & Scott, V. (2005). Preventing Falls Among Older Adults. Chapter in *CDC Handbook: The Incidence and Economic Burden of Injuries in the United States*. Division of Unintentional Injury Prevention, National Center for Injury Prevention and Control, Centre for Disease Control, Atlanta, Georgia
- Tuokko, H. & O'Connell, M. (2006). A review of quantified approaches to the qualitative assessment of clock drawing. In A. Poreh (Ed.), *The Quantified Process Approach to Neuropsychological Assessment*. (pp. 173-206), New York: Taylor & Francis.
- Wu, Z. & Schimmele, C.M. (2005). Divorce and Repartnering. In Maureen Baker (Ed.), *Families: Changing Trends in Canada*. (pp. 202-228). Fifth Edition. Toronto: McGraw-Hill Ryerson.

Appendix E

Presentations from June 2005 - June 2006

- Bellows, K. & Rhodes, R.E. (2006). The birth of inactivity? A review of physical activity and parenthood. North American Society for the Psychology of Sport and Physical Activity 2006 Annual Meeting, Denver, CO.
- Benoit, C, Banister, E., Leadbeater, B., Jansson, M., Marshall, A. & Riecken, T. (2006). Ethical issues in community-based research with children and youth. National Council on Ethics in Human Research. Ottawa, Ontario.
- Benoit, C. (2006). Health disparities among two vulnerable populations: Preliminary findings. Simon Fraser University, Faculty of Health Sciences. Burnaby, BC.
- Benoit, C., (2005). Fundamental social causes of ill-health among new mothers. CIHR Summer Institute 2005: Rural and Remote Health Research: Rhetoric and Reality. Gros Morne Park, NFLD.
- Blacklock, R., Rhodes, R.E. & Brown, S.G. (2006). Relationship between regular walking, physical activity and health-related quality of life. North American Society for the Psychology of Sport and Physical Activity 2006 Annual Meeting, Denver, CO.
- Brunt, H. (2006). Age and novelty. Canadian Anthropology Association (CASCA), Montreal, PQ.
- Brunt, H. (2006) On the anthropology of evil. Canadian Anthropology Association (CASCA), Montreal, PQ.
- Burton, C. L., Strauss, E., Hulstsch, D. F., & Hunter, M. A. (2005). Everyday problem solving and inconsistency in reaction time in older adults. Gerontological Society of America, Orlando, FLA.
- Burton, C. L., Bunce, D., Hulstsch, D. F., Strauss, E., & Hunter, M. A. (2006). Instrumental activities of daily living and everyday problem solving in older adults with mild cognitive impairment. International Neuropsychology Society, Boston, MA.
- Chappell, N. (2005). Chinese Canadian seniors. Canadian Sociology and Anthropology Association annual meetings, London, ON.
- Chappell, N.L. Dujela, C. & O'Rourke, N. (2005). Caregivers – Who copes how? Gerontological Society of America meetings, Orlando, FLA.
- Chappell, N.L. Dujela, C. & O'Rourke, N. (2005). Identifying caregivers at risk. Gerontological Society of America meetings, Orlando, Florida, US.
- Chappell, N. (2006). Measuring aspects of individualized care for persons with dementia in long-term care institutions. Centre for Research on Personhood in Dementia, University of British Columbia, Vancouver, BC.
- Chappell, N. (2006). Community and continuing care – Now and in the future. B.C. Seniors Advisory Council, Vancouver, BC.
- Chappell, N. (2006). Care and caregivers: Recent research on dementia in B.C. BCNAR workshop on Dementia Research, Vancouver, BC
- Chappell, N. (2006). Tribute to Betty Havens. Canadian Association on Gerontology, Halifax, NS.
- Cloutier-Fisher, D. (2006). Making meaningful connections: Gender, health and service use among socially isolated older adults in Canada. Caring for the North Conference. Prince George, BC.
- Cloutier-Fisher D, Penning MJ, Zheng C, Druyts E. (2005). The devil is in the details: Interpreting trends in rural and urban avoidable hospitalization rates in British Columbia: 1990-2000. Annual meetings of the Canadian Rural Health Research Society Meetings, Quebec City, PQ.
- Coble, J.D. & Rhodes, R.E. (2006). Physical activity and aboriginal populations in North America: A review. Society of Behavioral Medicine 2006 Annual Meeting, San Francisco, CA.
- Dodd, M. D., Masson, M. E. J., & Enns, J. T. (2006). The bicycle illusion: A new look at acuity, form, and motion interactions in conscious experience. Annual meeting of the Vision Sciences Society, Sarasota, FL.

- Ebert, P.L. & Tuokko, H.A. (2006). Cognitive, metacognitive and psychosocial predictors of benefit following memory enhancement intervention for older adults. Cognitive Aging Conference, Atlanta, GA.
- Ebert, P.L. & Tuokko, H. (2006). Multifaceted approach to memory enhancement in older adults. International Neuropsychological Society Meeting, Boston, MA.
- Enns, J. T., Dodd, M. D., & Masson, M. E. J. (2006). The bicycle illusion: A true story of sidewalk science. Annual meeting of the Vision Sciences Society, Sarasota, FL.
- Foster, H. (2005) Selenium and the viral pandemics. Saanich Rotary Club, University Club, Victoria, BC.
- Foster, H. (2005). Why geography is more important than genetics. Dine with a Scientist, Dunsmuir Lodge, University of Victoria, Victoria, BC.
- Foster, H. (2005). HIV/AIDS, the environment and nutrition. Unitarian Sunday Service, James Bay New Horizons Centre, Victoria, BC.
- Foster, H. (2005). AIDS in Africa: A nutritional solution. The Friends of Mengo Hospital, Uganda and Rotary Club of Saanich, African Night, Princess Mary Restaurant, Victoria, BC.
- Foster, H. (2005). Eradicating AIDS. Royal City Rotary Club, Westminster Club Building, Westminster, BC
- Foster, H. (2005). Nutrition and AIDS. Explorers Club, R and P House, Saltspring Island, BC.
- Foster, H. (2005). Is geography of greater health significance than genetics? Questers, Emissaries Lodge, 100 Mile House, BC.
- Foster, H. (2005). Geography: A key to health? Health Sciences Program, Division of Continuing Studies, David Strong Building, University of Victoria, Victoria, BC
- Foster, H. (2005). Geographical solution to the AIDS pandemic. Friends of Dr. Brad Weeks, Raj Shah House, Seattle, WA, US.
- Foster, H. (2005). The geography of Alzheimer's disease and of AIDS." SOLID (Saltspring Organization for Life Improvement and Development), Lions Club Hall, Ganges, Saltspring Island, BC.
- Harvey, J. & Cloutier-Fisher, D. (2006). Home beyond the house: Exploring the physical and social environments of older adults in Oceanside, B.C. Western Division of the CAG Conference, Kamloops, BC.
- Hemingway, D. & MacCourt, P. (2005). An examination of the spousal caregiver lived experience. B.C. Psychogeriatric Association annual conference. Courtenay, BC.
- Heyland, D., Pichora, D., Allan, D., & Stajduhar, K. (2005). End of life care in Canada: Family caregivers' perspectives of hospital care. Canadian Hospice Palliative Care Conference, Edmonton, AB.
- Hopper, T.F., Brown, S.G., Sanford, K.J. & Rhodes, R.E. (2005). Augmenting student teachers' aptitude to teach physical education: Using the theory of planned behaviour to assess situated learning in a methods course. SPEA / CAHPERD / SHEA Conference 2005, Saskatoon, SASK.
- Kadlec, H. (2005). From local to global perspectives at UVic. Panel on Internationalization. Vancouver, BC.
- Kirk, P. (2006). Interprofessional Practice-Is there such a thing?" Interprofessional Symposium, Port McNeill, BC.
- Kirk, P. (2005). 2 Workshops: How long have I got, doc?: Aids to talking to patients and families and Tired all the time: An interdisciplinary approach to fatigue management. B.C. Hospice & Palliative Care Association Annual meeting, Surry, BC.
- Kliman, A. & Rhodes, R.E. (2006). An evaluation of Health Canada's Physical Activity Guide to Healthy Active Living as a motivational instrument. Society of Behavioral Medicine 2006 Annual Meeting, San Francisco, CA .
- Kobayashi, K.M. & Cloutier-Fisher, D. (2006). Exploring the linkages between social isolation, gender, health and health care utilization among older adults: Findings from the 2000-01 Canadian Community Health Survey. Canadian Sociology and Anthropology Association, Canadian Congress Meetings, York University, Toronto, ON.

- Kobayashi, K.M. (2006). Presentation paper prepared for discussion. Premier's Council on Aging and Seniors' Issues, May 18. Victoria, BC.
- Kobayashi, K.M. (2005). Addressing the social support and health care needs of older Japanese Canadians. Convention of the Association of Pan-American Nikkei (COPANI) XIII. Vancouver, BC.
- Koop, P.M., deJong-Berg, M.A., Williams, A., Cohen, R., Allan, D., & Stajduhar, K. (2006). Defining caregiver respite in end-of-life care: A systematic literature review. Canadian Psychosocial Oncology Conference, Montreal, PQ.
- Little, M., & Milliken, J. (2006). Those who can't do, teach? Exploring the practice competence of nurse educators. Eleventh Annual Ethel Johns Nursing Research Forum, Vancouver, BC.
- Low, G., & Molzahn, A.E. (2006). Quality of life: Working toward a guiding framework. Alberta Association of Aging/Alberta Gerontological Nurses Association Conference. Red Deer, ALTA.
- Masson, M. E. J., Bub, D. N., & Worth, L. (2005, July). Recruitment of functional and volumetric gestural knowledge in object identification. Annual meeting of the Canadian Society for Brain, Behavior, and Cognitive Science, Montreal, PQ.
- Masson, M. E. J. (2006, June). Thinking in actions. Center for Cognitive Studies, University of Potsdam, Germany.
- MacCourt, P. & Moscovitz, N. (2005). Psychosocial approaches to the mental health challenges of late life: Seniors Psychosocial Interest Group (SPIG) Initiatives Canadian Association of Gerontology annual scientific meeting. Halifax, NS.
- MacCourt, P., Kreiger-Frost, S., Donnelly, M., LeClair, K. et al, (2005). Tools for geriatric collaborative mental health care. Canadian Association of Gerontology annual scientific meeting. Halifax, NS.
- MacCourt, P. (2005) Facilitating best practice in policy and program design: Introducing the seniors' mental health policy lens. National Best Practice Conference. Ottawa, ON.
- Mateer, C.A. & Sira, C. (2005). Facilitating return to work after traumatic brain injury: Strategies that work. Vocational Rehabilitation Conference. Vancouver, BC.
- McGowan, P. (2005). Congress on Aging and Seniors' Issues. BC Ministry of Community Services and Responsible for Seniors' and Women's Issues. Health Care Self-Management. Vancouver, BC.
- McGowan, P. (2005). Hepatitis C Council of British Columbia. Chronic Disease Self-Management & HCV Health and Treatment Support Education. Richmond, BC.
- McGowan, P. (2005). The potential of self-management in community capacity building. Canada Foundation for Innovation (CFI) New Initiative Fund National Think Tank. London, ON.
- McGowan, P. (2005). Patient self-management programs in British Columbia 1989 – 2005. New Perspectives: International Conference on Patient Self-Management. Victoria, BC.
- McGowan, P. (2006). Self-management concepts in rehabilitation. RehabNet National Conference / 12th Annual North American Collaborating Centre Conference on ICF. Vancouver, BC.
- McGowan, P. (2006). Implementing the chronic disease self-management program in BC. Chronic Disease Managed Care Conference. Vancouver, BC.
- McGowan, P. (2006). Health Quality Council & Patient Self-Management. Saskatchewan Chronic Disease Management Collaborative, Saskatoon, SK.
- McGowan, P. (2006). Chronic care: Maximizing the concept of self-management and Enhancing the effectiveness of patient education with self-management training. Diabetes Care Program of Nova Scotia and Cardiovascular Health Nova Scotia, Halifax, NS.
- McGowan, P. (2006). Chronic disease self-management program in BC. National Chronic Disease Management Conference. Toronto, ON.

- McGowan, P. (2006). Enhancing effectiveness with patient self-management. Country Roads, Merrickville District & North Lanark County Community Health Centres, Perth, ON.
- McGowan, P. (2006). Interactive skills-building activity: Supporting patient self-management. Bridgepoint Health Centre. Toronto, ON.
- McGowan, P. (2006). Advanced patient self-management concepts. Bridgepoint Health Centre. Toronto, ON.
- McGowan, P. (2006). Patient self-management for health care professionals. Delta Home Care Nurses. Fraser Health Authority. Delta, BC.
- McGowan, P. (2006). Enhancing patient education with self-management. Renal Unit, Royal Columbian Hospital. New Westminster, BC.
- McMahon, M. (2005). Emotional framing and storytelling. Social Psychology roundtable session. American Sociological Association meetings. Philadelphia, US.
- Milliken, P. J. (2006). Round & round we go: Families & mental illness. Working together: Family involvement in the mental health system. Sponsored by Vancouver Coastal Mental Health Services, Vancouver, BC.
- Molzahn, A.E. (2005). Quality of life research. University of Sao Paulo – Riberao Preto, BRA.
- Molzahn, A.E. (2005). Nursing education in Canada. Federal University of Sao Paulo, Sao Paulo, BRA.
- Molzahn, A.E. (2005). Quality of life: The concept and its applications in practice. Federal University of Sao Paulo, Sao Paulo, BRA.
- Molzahn, A.E. (2005). Quality of Life Measurement. Federal University of Sao Paulo, Sao Paulo, BRA.
- Molzahn, A.E. (2005). Quality of life: Studying the concept qualitatively. Federal University of Sao Paulo, BRA.
- Molzahn, A.E. (2005). Quality of life with chronic kidney disease. Sao Paulo Nephrology Nurses Association Annual Congress in Campos do Jordao, BRA.
- Molzahn, A.E. (2005). Qualitative research in nephrology. KRESCENT Post-doctoral Trainees in nephrology, Toronto, ON.
- Molzahn, A.E. (2006). Quality of life. Margaret Scott Wright Research Day, University of Alberta, ALTA.
- Molzahn, A.E. (2005). Ethnocultural beliefs regarding organ donation. B.C. Transplant Research Day, Vancouver, BC.
- Molzahn, A.E., & Starzomski, R.S. (2006). Ethnocultural beliefs regarding organ donation. American Nephrology Nurses Association National Symposium, Nashville TN.
- Moss, P. (2006). Emerging possibilities and configurations in feminist research methods. University of Toronto, Department of Geography. Toronto, ON.
- Moss, P. (2006). What's there and what isn't? Thinking about texts, truths, and analysis. Qualitative Inquiry Group, University of Toronto, Toronto, ON.
- Patry, B., Mateer, C. & Tuokko, H. (2006). Navigating your week:" A new board game to measure prospective memory in adults with traumatic brain injury. International Neuropsychological Society meeting, Boston, MA.
- Penning, M.J. & Béland, F. (2006). Fondements Sociaux de la fragilité. Congrès international francophone de gérontologie et gériatrie, Quebec City, PQ.
- Penning, M.J. (2006). The social bases of frailty: The way forward. Proposed research directions and methodological approaches. 2nd International Working Meeting on frailty and Aging, Montreal, PQ.
- Penning, M.J. & Béland, F. (2005). The social bases of frailty. Annual meetings of the Canadian Association on Gerontology, Halifax, NS.

- Penning, M.J. (2005). Social isolation, frailty and service utilization. Annual meetings of the Canadian Association on Gerontology, Halifax, NS.
- Ping Y, Hebert M and Lau F. (2005). A collaborative approach to health informatics capacity building – Learning from Canadian practice in fostering research and education. HIC Conference, Australia.
- Purkis, M.E. (2005). Explaining nursing actions: Theories of and for nursing practice. Annual Nursing Education Conference, Skejby Hospital, Aarhus, Denmark.
- Rhodes, R.E., Brown, S.G. & McIntyre, C. A. (2006). Integrating social cognition and the perceived environment when predicting walking. Society of Behavioral Medicine 2006 Annual Meeting, San Francisco, CA.
- Rhodes, R.E. & Blanchard, C.M. (2006). Do sedentary motives correlate with physical activity? Adding behavioural choice principles to the theory of planned behaviour. North American Society for the Psychology of Sport and Physical Activity 2006 Annual Meeting, Denver, CO.
- Rockwood, K., Kirkland, S., Fisk, J., MacKnight, C., Bowles, S., Darvesh, S., Hogan, D.B., Tuokko, H., Wolfson, C., & McDowell, I. (2005). Use of lipid lowering agents and the risk of cognitive impairment not meeting dementia criteria in relation to apolipoprotein E status. Alzheimer's Association International Conference on Prevention of Dementia, Washington, DC.
- Ross, S.P., Mueller, S.C., Skelton, R. (2005). Spatial learning transfer between virtual and real environments. Western Psychological Association, Portland, OR.
- Scott, V. (2006). National patient fall initiative in Canada. Transforming Fall Prevention Practices, University of South Florida College of Nursing, University of South Florida. Clearwater, FLA.
- Scott, V. (2006). Falls ... prevention and management: Post Polio Awareness and Support Society of BC. PPASS of BC Symposium 2006: Maintaining an Independent and Healthy Lifestyle. Vancouver, BC.
- Scott, V. (2006). Falls and injury prevention updates, new initiatives and current projects. Health Care Leaders' Home & Community Care Conference, Vancouver, BC.
- Scott, V. (2006). Falls and injury prevention among older adults in British Columbia: Clinical practice guidelines. University of British Columbia, Department of Health Care and Epidemiology Grand Rounds, Vancouver, BC.
- Scott, V. Baaske, L. (2006). The evolution of seniors' falls prevention in British Columbia. BC Injury Prevention Conference, Vancouver, BC.
- Scott, V., Lord, S., Khan, K., Donaldson, M. (2006). Best practices for fall risk assessment tool use. BC Injury Prevention Conference, Vancouver, BC.
- Scott, V. (2006). Falls prevention research best practices and levels of evidence. The Second Annual Island Bridges Educational Forum, Nanaimo, BC.
- Scott, V. (2006). Design and environment. Premier's Council on Aging and Seniors' Issues, Vancouver, BC.
- Scott, V. (2006). Utilizing research for falls prevention: Methods and application workshop. The Eleventh Annual Ethel Johns Research Forum: Providing Safe and Effective Care – Action through Practice, Leadership and Research, Vancouver, BC.
- Scott, V. (2005). Risk factors for injurious falls among residents in long-term care facilities. Canadian Injury Prevention and Safety Promotion Conference: Evidence to Action: Injury, Violence and Suicide Prevention, Halifax, NS.
- Scott, V. (2005). The evolution of seniors' falls prevention in British Columbia. Canadian Injury Prevention and Safety Promotion Conference: Evidence to Action: Injury, Violence and Suicide Prevention, Halifax, NS.
- Scott, V. (2005). Stepping in: Falls prevention among residents of long-term care Facilities. Canadian Injury Prevention and Safety Promotion Conference: Evidence to Action: Injury, Violence and Suicide Prevention, Halifax, NS.
- Slatkoff, J. & Strauss, E. (2006). An examination of ethnic bias in the MMPI – A structural summary. 3rd Annual Forensic Psychiatry Conference, Vancouver, BC.

- Smith, N.E.I., Rhodes, R.E., Naylor, P.J. & McKay, H.A. (2006). Exploring moderators of the relationship between physical activity behaviours and television viewing in elementary school children. Society of Behavioral Medicine 2006 Annual Meeting, San Francisco, CA.
- Stajduhar, K.I., Cohen, S.R., Chappell, N.L., Heyland, D., Koop, P., & Williams, A. (2005). Family caregiving in palliative and end of life care: A new emerging team. Canadian Hospice Palliative Care Conference, Edmonton, AB.
- Stepaniuk, J. & Tuokko, H. (2006). The link of personality and behavioral impairments in mild cognitive impairment. North West Cognition and Memory Conference, Vancouver, B.C.
- Stepaniuk, J. & Tuokko, H. (2006). The link of personality and behavioral impairments in mild cognitive impairment. BC Psychogeriatric Association Conference, Kelowna, B.C.
- Temple, V.A., Naylor, P.J., Bridgewater, L. & Rhodes, R.E. (2006). Family childcare: A setting for the promotion of physical literacy. International Congress on Physical Activity and Public Health, Atlanta, GA.
- Tuokko, H., McGee, P. & Rhodes, R.E. (2005). Readiness to change driving behavior: A pilot study using a new decisional balance scale. Annual Meeting of the Canadian Association on Gerontology, Halifax, NS.
- Tuokko, H. (2006). The neuropsychological detection of MCI. Mini-symposium I: Cognitive reserve and MCI. 4th Annual Mild Cognitive Impairment Symposium, Miami, FL.
- Vanderhill, S., Bunce, D., Hultsch, D. F., Hunter, M. A., & Strauss, E. (2006). Noncognitive correlates of mild cognitive impairment subgroups. International Neuropsychology Society, Boston, MA.
- Wallbrecht, K., Rhodes, E.C., Langill, R.H. & Rhodes, R.E. (2006). The effects of a 12-week cardiac rehabilitation program on four measures of health outcomes. American College of Sports Medicine 53rd Annual Meeting, Denver, CO.
- Warburton D.E.R., Bredin S.S.D., Horita L.T.L., Esch B.T.A., Scott J.M., Zbogar, D. & Rhodes R.E. (2005). The health benefits of interactive video game exercise. Canadian Society for Exercise Physiology Annual Meeting, Gatineau, PQ.
- Williams, B. R., Hultsch, D. F., Strauss, E., Hunter, M. A. & Tannock, R. (2006). Inconsistency in reaction time performance in children with attention deficit/hyperactivity disorder. International Neuropsychology Society, Boston, MA.
- Williams, A., Crooks, V., Stajduhar, K., Cohen, R., & Allan, D. (2006). An evaluation of Canada's compassionate care benefit: Examining socio-spatial themes. American Association of Geographers Annual Meeting, Chicago, ILL
- Williams, A., Crooks, V., Stajduhar, K., Cohen, R., & Allan, D. (2006). Women's caregiving work at end-of-life: An evaluation of Canada's Compassionate Care Benefit. Ontario Women's Health Council Conference, Ottawa, ON.
- Wu, Z. & Schimmele, C.M. (2005). Psychological disposition and self-reported health in old age: An examination of the oldest old in China." XXV International Population Conference, Tours, France.
- Young, L.E., & Muir, J. (2005). Patient safety and pain management. Patient Safety: A call to action. CRNBC Continuing Education Conference. Vancouver, BC.
- Young, L.E., & Muir, J. (2005). Building capacity for change: Addressing pain issues in nursing. CRNBC Continuing Education Conference. Vancouver, BC.
- Young, L.E. (2005). Reflecting on family nursing. pre-conference educational tour for 46 nurses from Japan Prior to the 7th International Family Nursing Conference, Victoria BC.
- Young, L.E. (2006). Tackling a tough agenda: Utilizing participatory research to advance the cardiovascular health of lone mothers. The UCLA School of Nursing and Center for Vulnerable Populations Research (CVPR). Los Angeles, CA.
- Young, L.E.(2005). Family nursing: Cross cultural implications. Pre-conference workshop for Nurses from Japan (60 participants). 7th International Family Nursing Conference, June 2005, Victoria, BC.

- Young, L.E. (2005). Family-centered cardiovascular nursing care: Working the tensions. Canadian Council of Cardiovascular Nurses' Conference. Montreal, PQ.
- Young, L.E. (2006). Bringing health promotion into reality. 2 Workshops in concurrent sessions for Health Promotion, prevention, and population health: Working Towards a common understanding. Vancouver Coastal Health, Richmond, BC.
- Young, L.E. (2006). Qualitative methods in cardiovascular nursing science. Summer Research Methods Institute for CIHR Future Trainees. Calgary, AB.
- Zehr, E.P. (2005) Neural control of rhythmic arm movement: implications for recovery of walking after neurotrauma.. University of Michigan, Departments of Kinesiology and Bioengineering. Ann Arbor, MI
- Zehr, E.P. (2005) Neural control of rhythmic arm movement: implications for recovery of walking after neurotrauma. McGill University, Jewish Rehabilitation Hospital, Montreal, QC.
- Zehr, E.P. (2005). Acute and chronic plasticity in human spinal reflexes. College of Physical Therapy, Neuroscience training group, University of Florida, US.
- Zheng, C. & Penning M.J. (2005). Changes in hospitalization among older adults living in British Columbia: Rural-urban differences. Annual meetings of the Canadian Federation of Demographers Conference, Montreal, PQ.