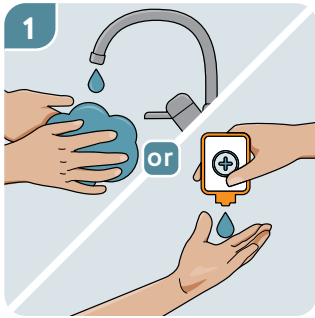
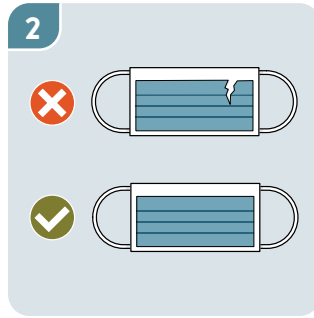


# Help prevent the spread of COVID-19: How to use a mask



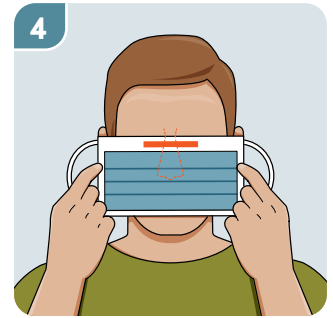
1 Wash your hands with soap and water for at least 20 seconds before touching the mask. If you don't have soap and water, use an alcohol-based hand sanitizer.



2 Inspect the mask to ensure it's not damaged.



3 Turn the mask so the coloured side is facing outward.



4 Put the mask over your face and if there is a metallic strip, press it to fit the bridge of your nose



5 Put the loops around each of your ears, or tie the top and bottom straps.



6 Make sure your mouth and nose are covered and there are no gaps. Expand the mask by pulling the bottom of it under your chin.



7 Press the metallic strip again so it moulds to the shape of your nose, and wash your hands again.

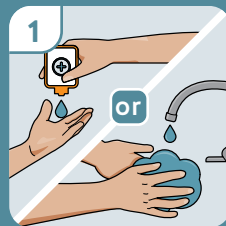


8 Don't touch the mask while you're wearing it. If you do, wash your hands.

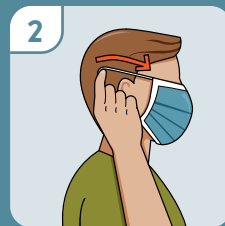


9 Don't wear the mask if it gets wet or dirty. Don't reuse the mask. Follow correct procedure for removing the mask.

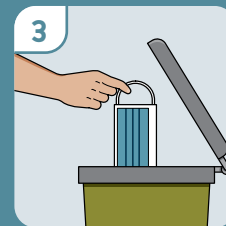
## Removing the mask



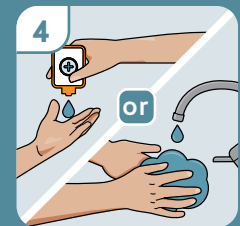
1 Wash your hands with soap and water or use an alcohol-based hand sanitizer.



2 Lean forward to remove your mask. Touch only the ear loops or ties, not the front of the mask.



3 Dispose of the mask safely.



4 Wash your hands. If required, follow the procedure for putting on a new mask.

Note: Graphics adapted from BC Centre for Disease Control (BC Ministry of Health), "How to wear a face mask."