

***University Of Victoria
Classroom Utilization
1997/98***

***Prepared by: Gordon M. Elliott
Alan R. Wilson***

Our Web Home Page is <http://www.inst.uvic.ca>

***Institutional Analysis
July 20, 1998***

Introduction

Classroom Utilization 1997/98

Methodology

This report displays the level of classroom use as of October 1997. Two components are identified: scheduled instruction and bookings. Scheduled instruction consists of regular classroom instruction and includes lectures, tutorials, some discussion groups, and labs offered in classrooms. Bookings consists of more casual classroom use, such as staff and department meetings, clubs and course union usage, and conferences. No bookings are included with scheduled instruction data. However, about 10% of bookings are actually tutorials and other course sections associated with regular courses. They usually appear here due to limitations in the university course database, which cannot handle courses which meet in one room for a part of a term and then move, in that term, to another room. The system also cannot handle short-term immersion-type courses which meet throughout the day.

Room use is divided into two time periods: daytime (8:30 a.m. - 4:30 p.m.) and evening (4:30 p.m. - 10:00 p.m.). A 70% daytime room use rate is considered by many as a reasonable target. Hence a line at 70% appears on all charts that tabulate room use. Bars that fall below the red line at 50% indicate rooms empty more than half the time. For seat use, 50% is considered a reasonable target. Hence a line at 50% appears on all charts that tabulate seat use. Bars that fall below the red line at 33% indicate rooms with less than a third of the seats occupied. Note that a room in use from 5:30 p.m. - 6:30 p.m. will fill the 5:30 - 6:00 time slot and half of the 6:00 - 7:00 time slot.

The removal of three rooms from classroom use and the addition of twenty-two other have increased the number of classrooms from 121 to 140 and increased the number of seats from 5756 to 6587 since 1996/97.

Results

Charts 1 - 6 give daily room utilization for both scheduled instruction and bookings. Scheduled instruction room use falls below 50% at 4:30 on Monday, at 2:30 on Tuesday, at 4:30 on Wednesday, and at 3:30 on Thursday. Little instruction occurs on Friday after 2:30. Only bookings occur on Saturday. For the Monday to Friday average (Chart 7), room usage falls below 50% at 3:30. Charts 8 - 11 display seat use for scheduled instruction only. Seat use for bookings data is not available. For the Monday to Friday average (Chart 9), seat occupancy falls below one third at 3:30. Table 1 and Chart 12 break down room use by seating capacity. Except for the smallest rooms (25 or fewer seats) scheduled instruction room use exceeds 70%. Table 2 and Chart 13 break down room use by building. Visual Arts and Business and Economics have the lowest overall daytime utilization at 21.9% and 36.5% respectively. (The Visual Arts building has only two classrooms and The Business and Economics building has only one classroom.) Charts 14 and 15 give seat utilization by room capacity and building. Table 3 and Charts 16 and 17 compare overall rates with those of previous years. Overall and scheduled instruction daytime use decreased with the addition of several new classrooms, by 5.2% and 4.9% respectively over 1996/97. Evening utilization decreased by 4.5%. A classroom inventory appendix gives utilization rates for each classroom.

Chart 1: Monday Room Utilization By Start Time

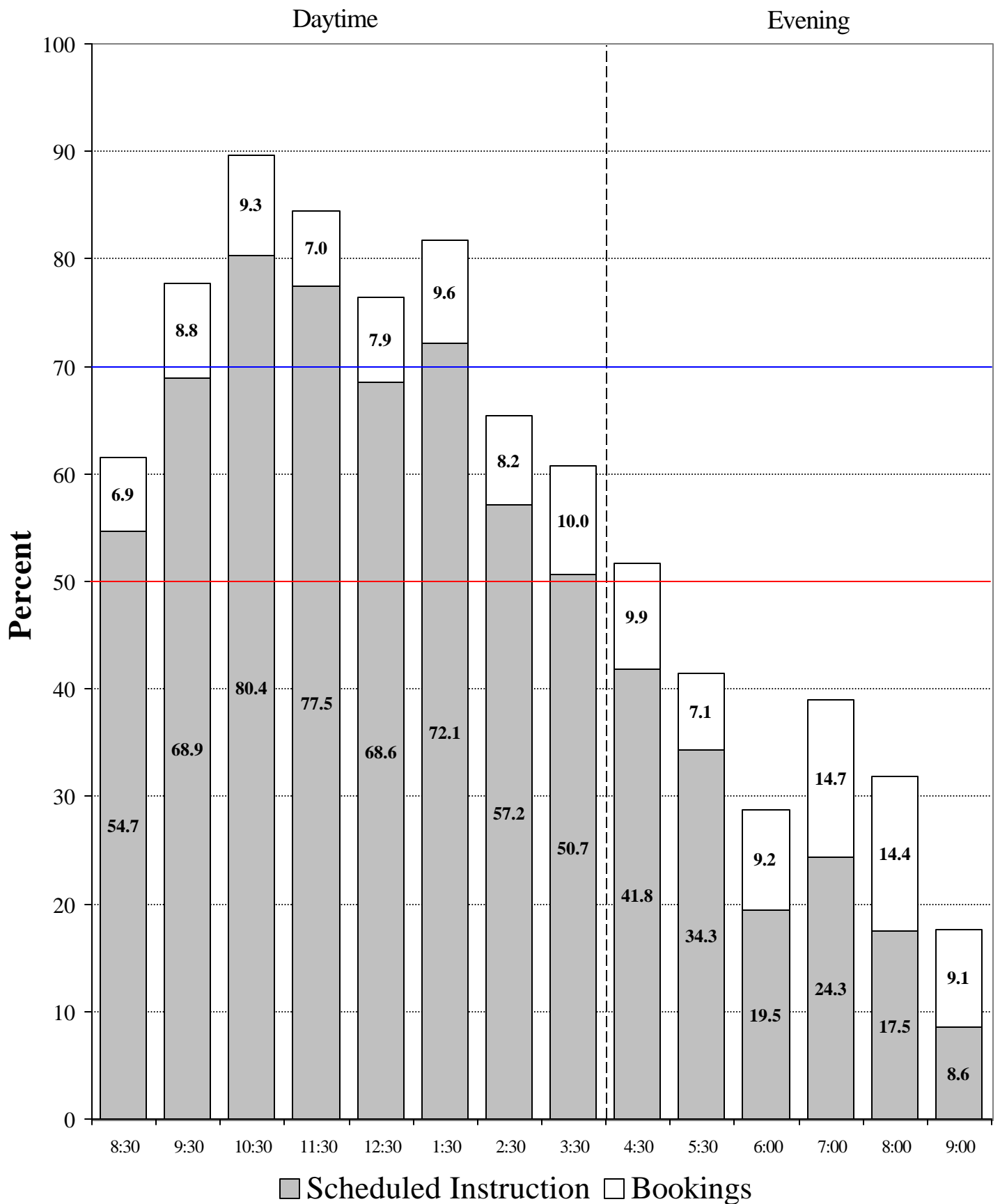


Chart 2: Tuesday Room Utilization By Start Time

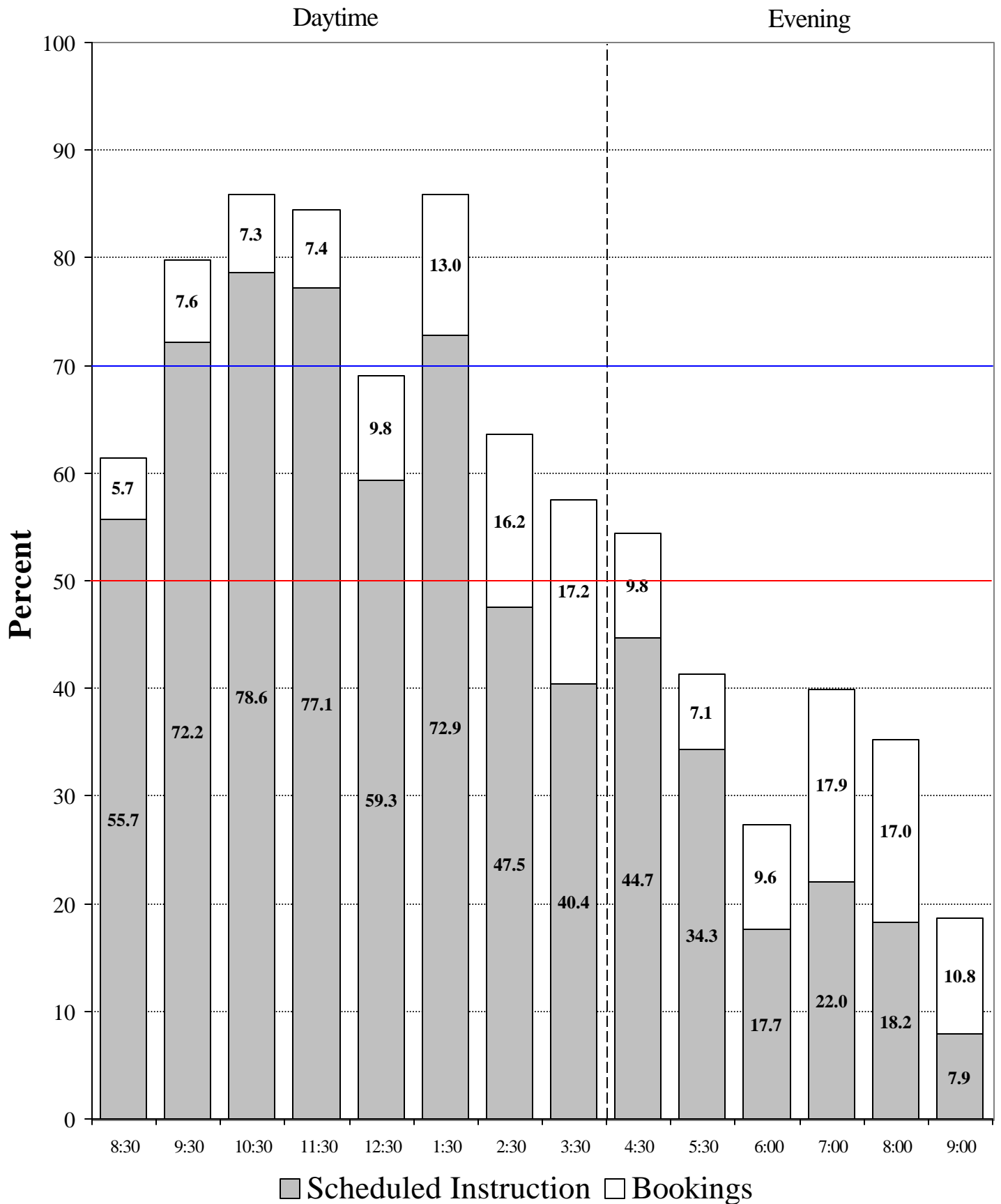


Chart 3: Wednesday Room Utilization By Start Time

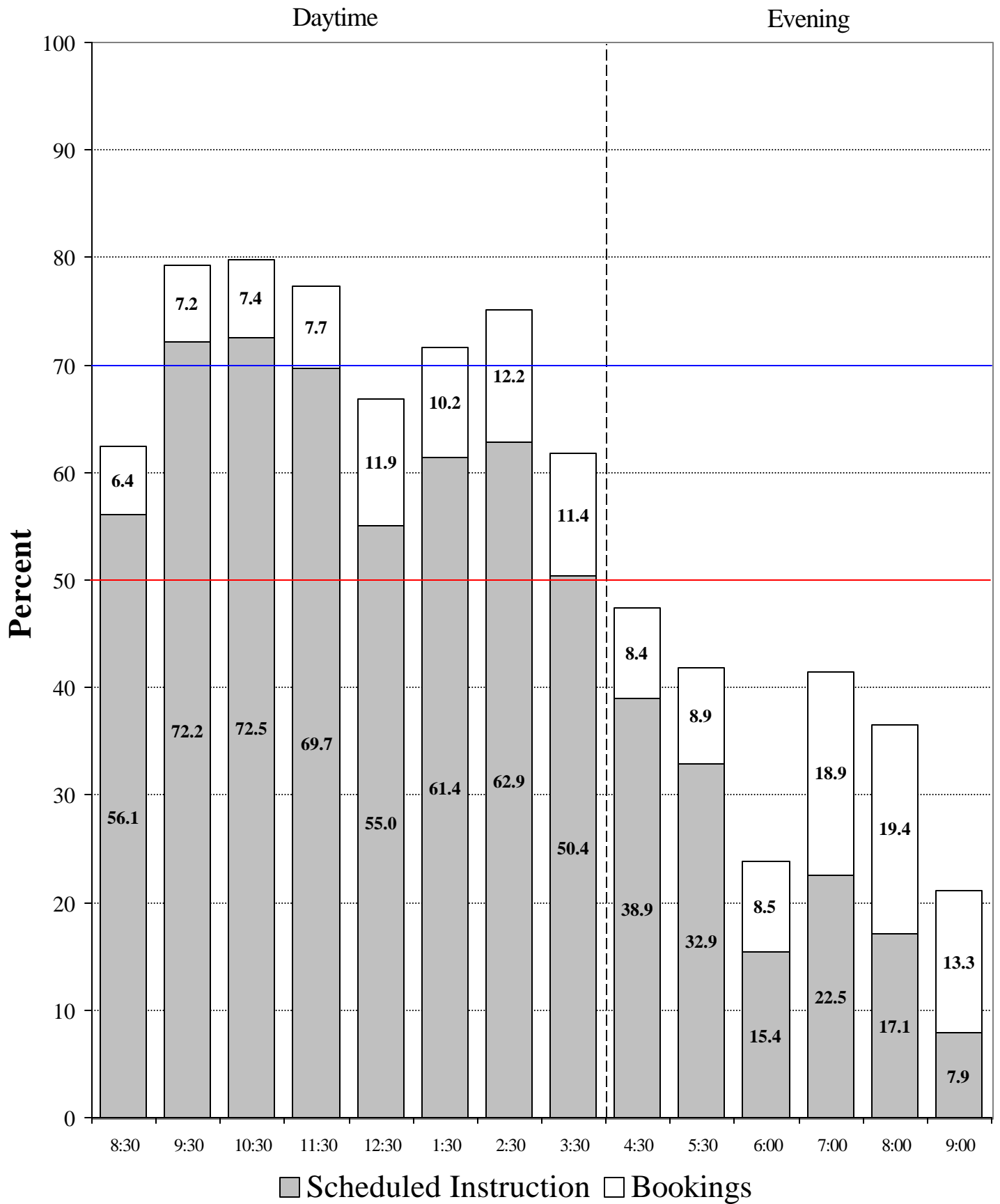


Chart 4: Thursday Room Utilization By Start Time

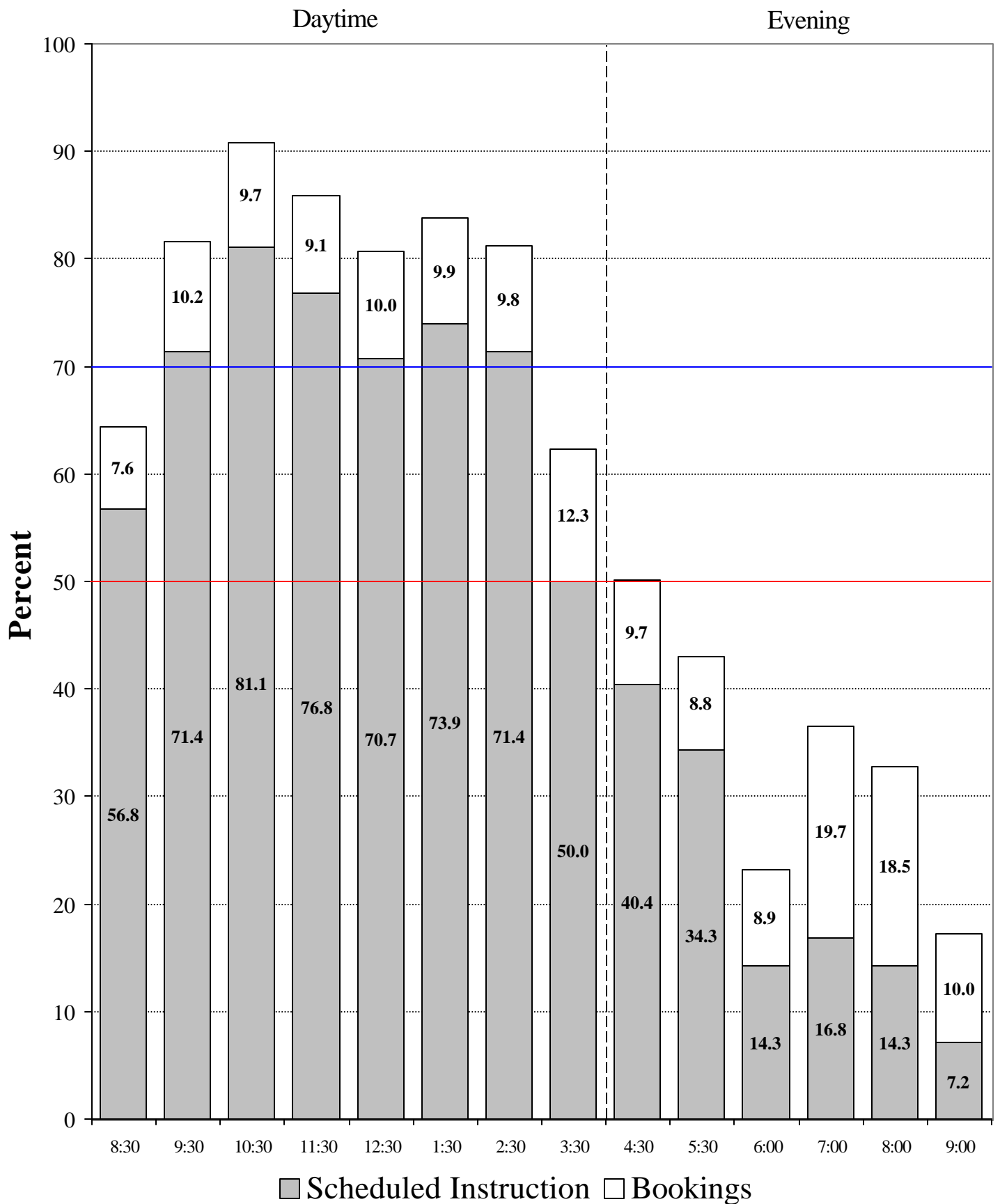


Chart 5: Friday Room Utilization By Start Time

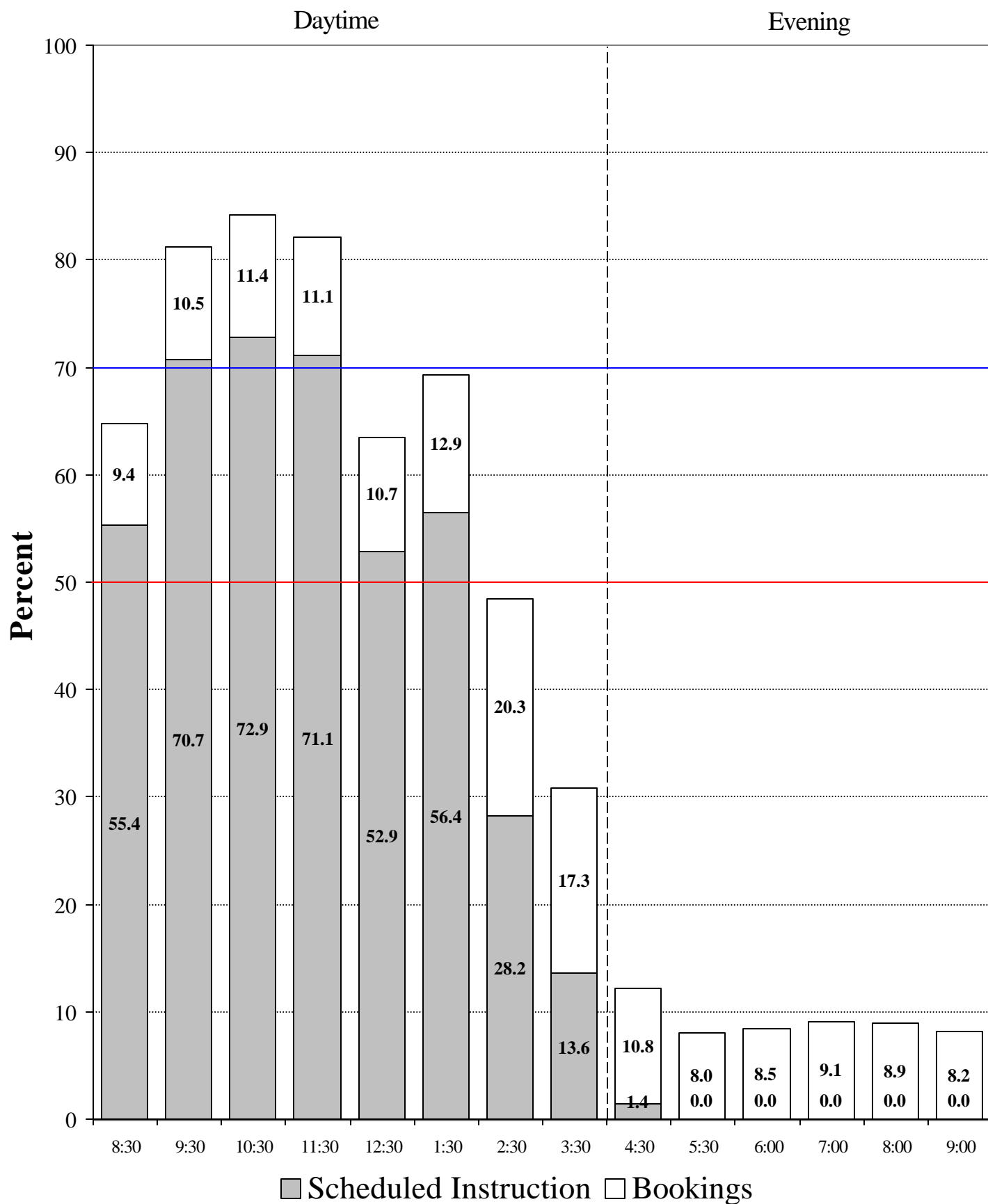


Chart 6: Saturday Room Utilization By Start Time

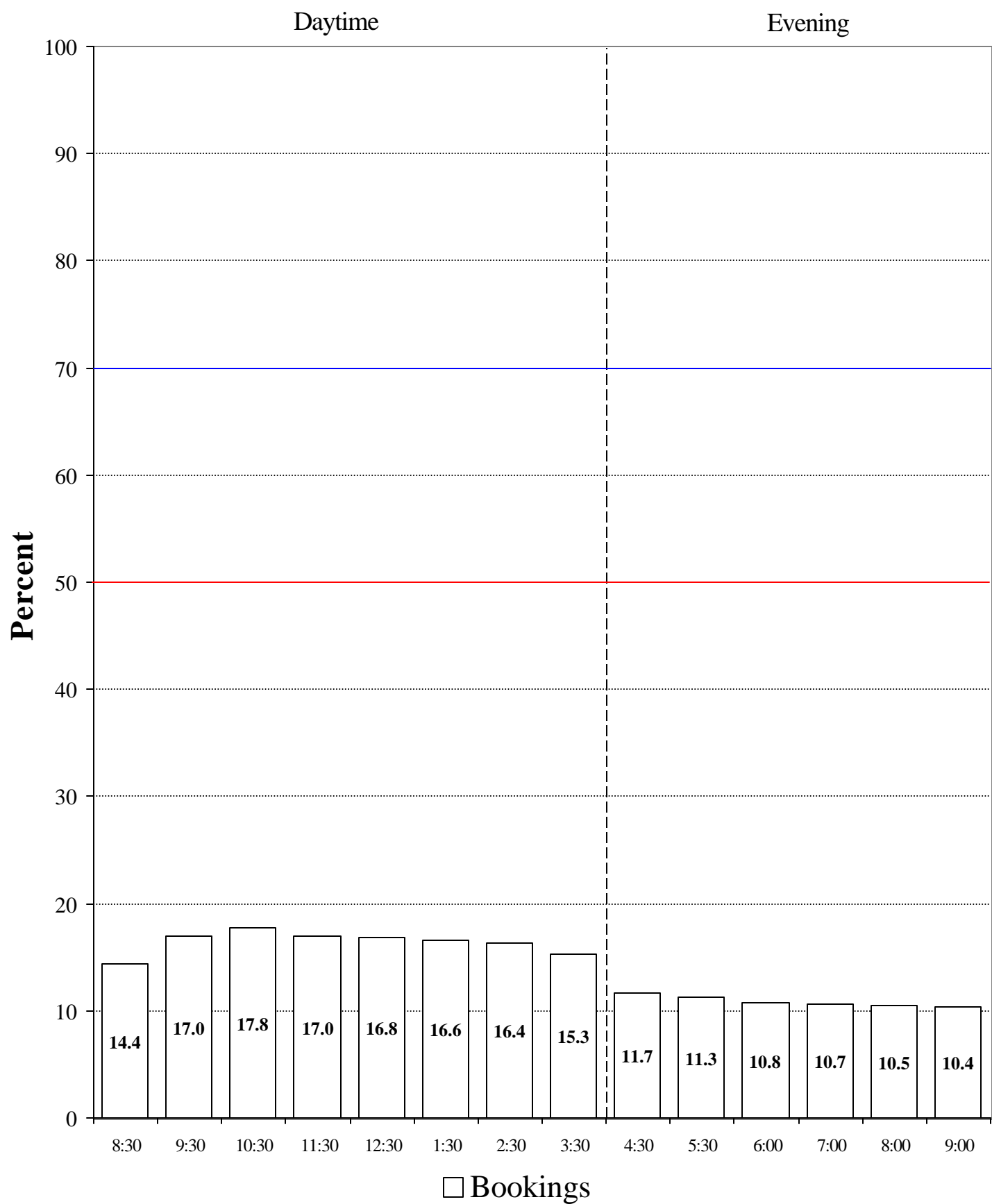


Chart 7: Average Monday to Friday Room Utilization By Start Time

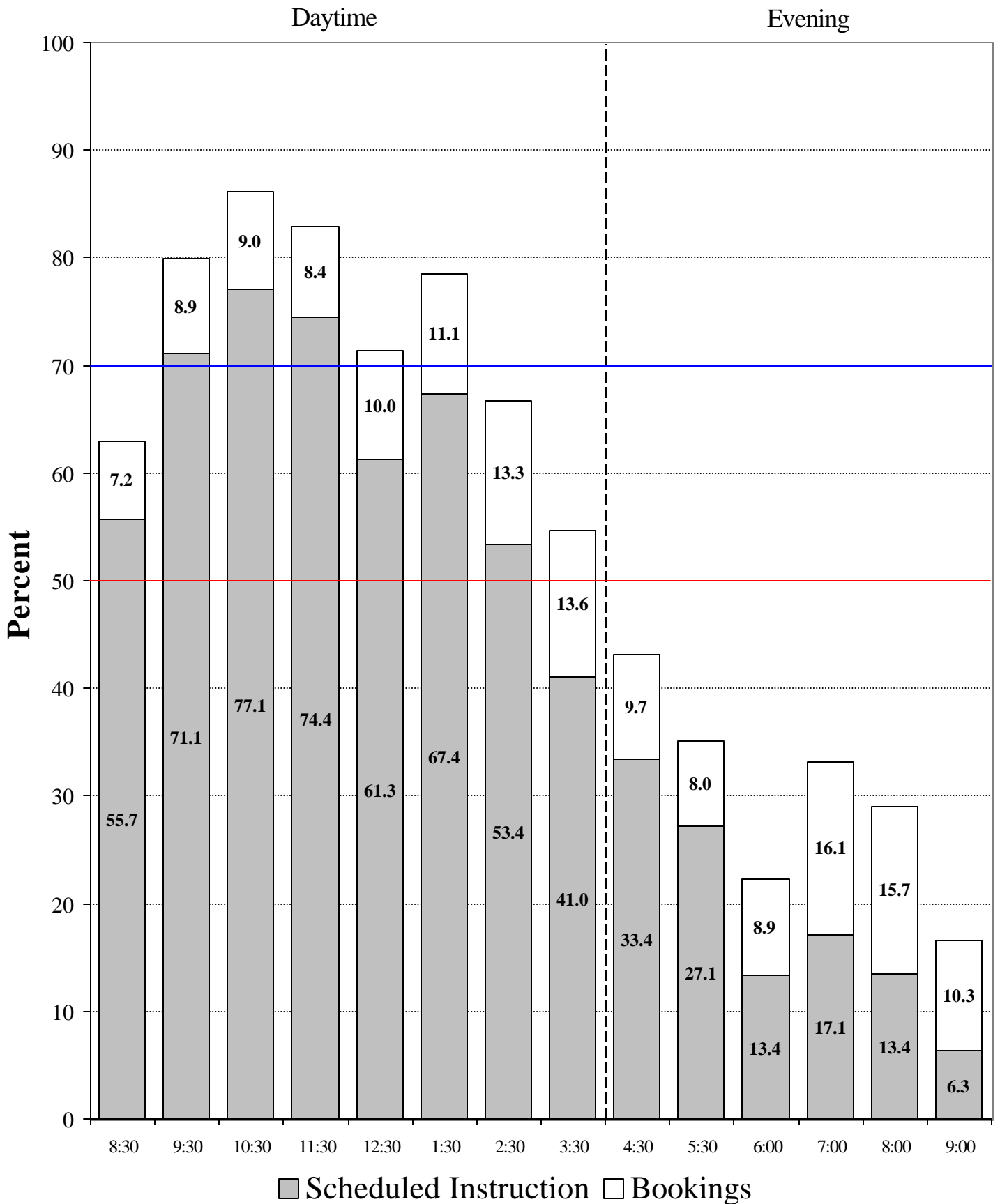


Chart 8: Monday - Friday Seat Utilization for Scheduled Instruction By Start Time

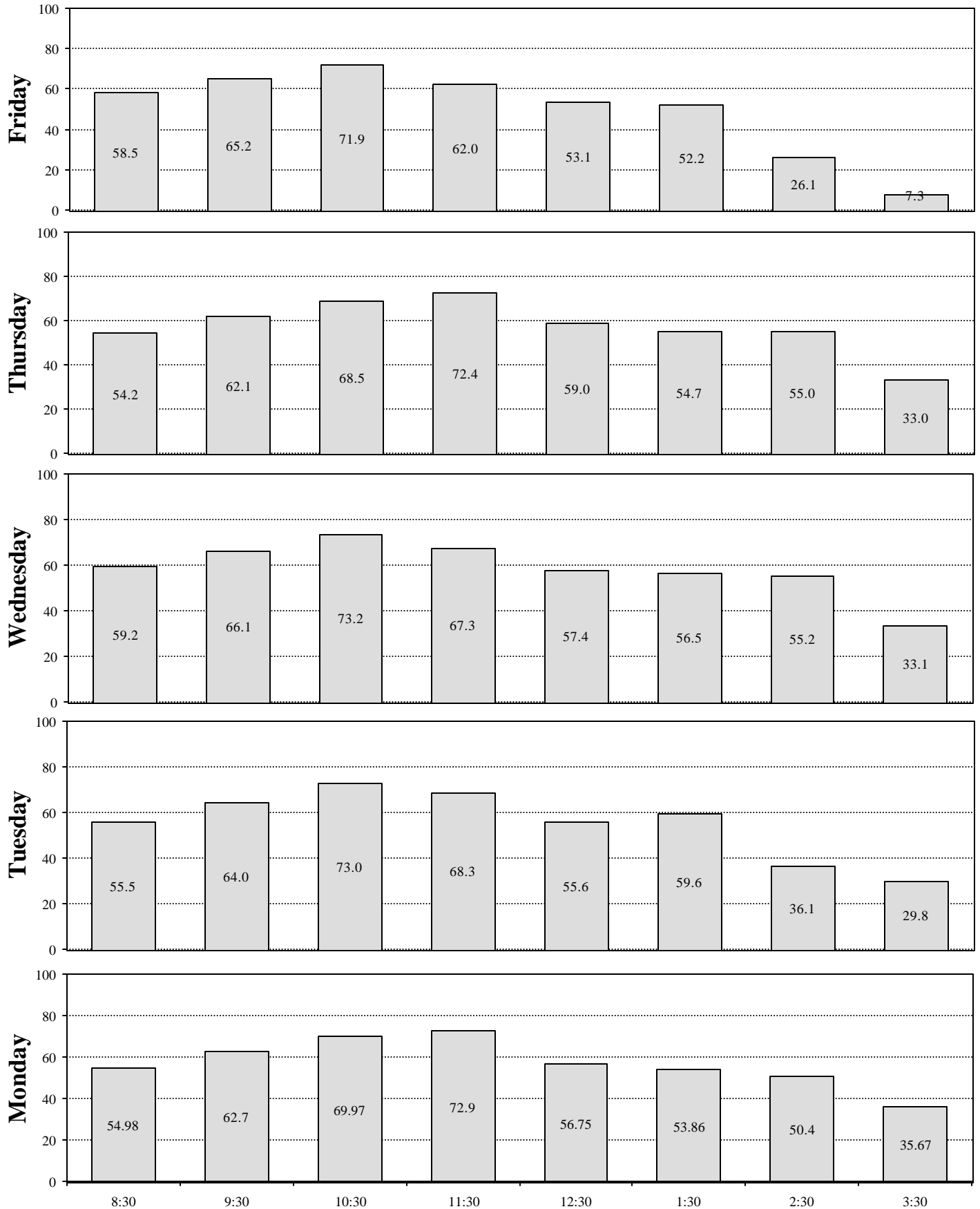


Chart 9: Average Monday to Friday Seat Utilization For Scheduled Instruction By Start Time

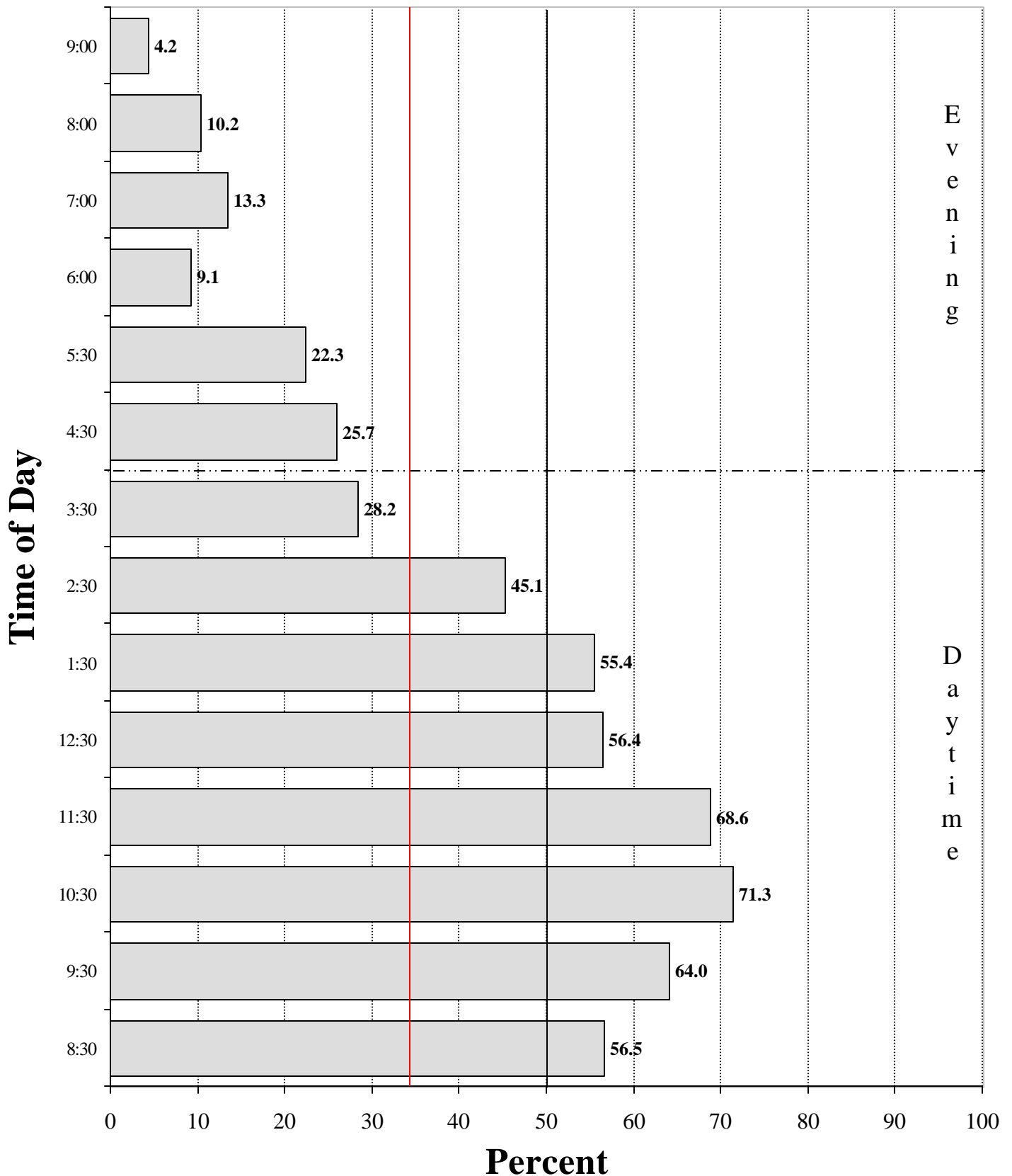
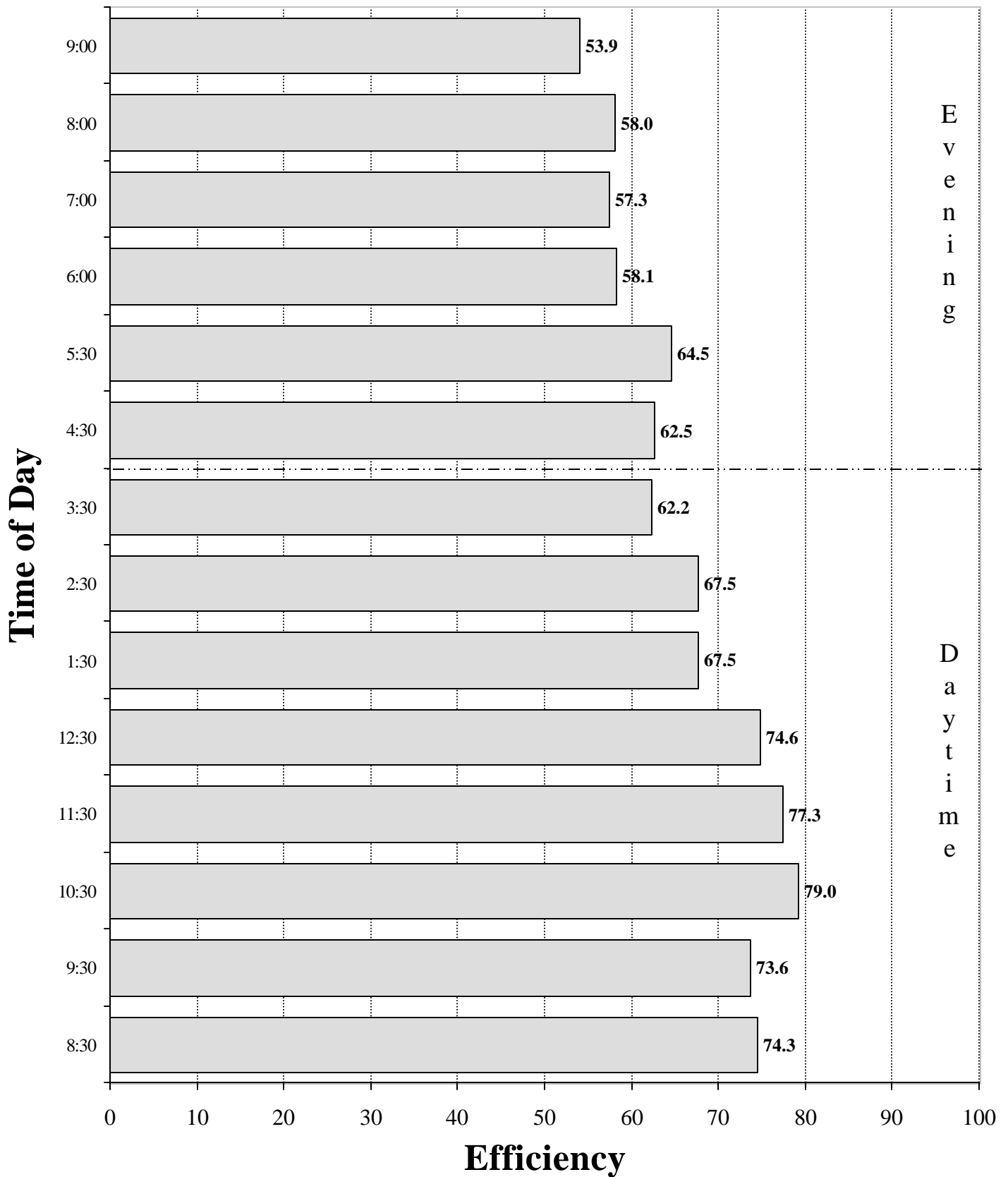


Chart 11: Average Monday to Friday Seat Utilization of Occupied Rooms for Scheduled Instruction By Start Time



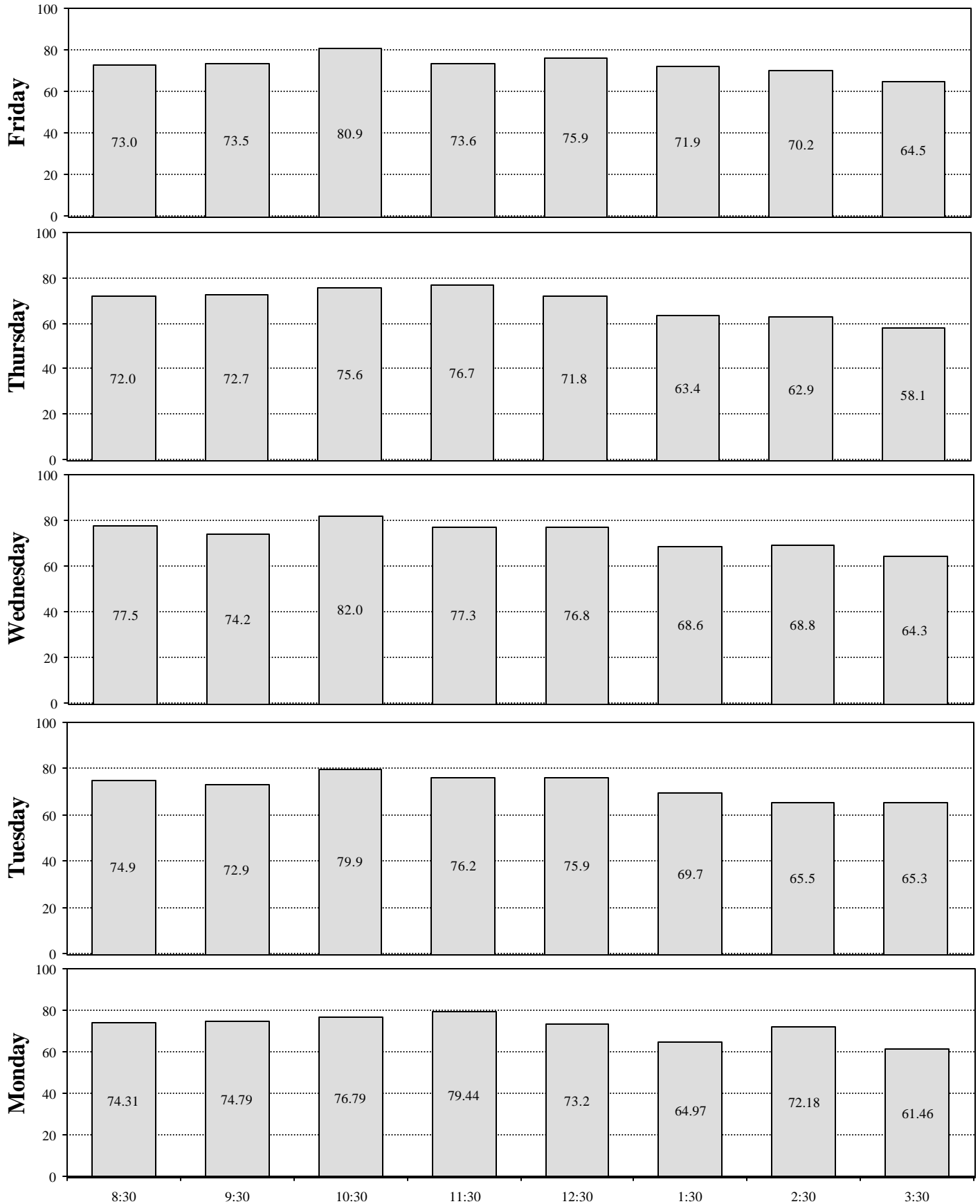
Note: Percentages are based on the total number of seats in occupied rooms only.

Source: Scheduling data from the University of Victoria's Student and Bookings Databases, October 1997.

Institutional Analysis

July 20, 1998

Chart 10: Monday - Friday Seat Utilization of Occupied Rooms for Scheduled Instruction By Start Time



Note: Percentages are based on the total number of seats in occupied rooms only.

Source: Scheduling data from the University of Victoria's Student and Bookings Databases, October 1997.

Institutional Analysis

July 20, 1998

TABLE 1
1997/98 Classroom Inventory

Seating Capacity	No. of Rooms	No. of Seats	Area in Sq. M.	Sq. M. per Seat	Monday - Friday Daytime		
					%Sched Inst Room Use	%Seat Use	%Total ¹ Room Use
1–25	49	849	1,709.5	2.01	45.9	32.1	64.3
26–39	29	952	1,562.7	1.64	64.1	46.0	72.6
40–49	17	749	1,139.7	1.52	72.1	51.0	77.5
50–69	23	1,334	2,059.2	1.54	72.1	50.5	77.2
70–89	10	735	1,026.4	1.40	76.8	59.6	80.5
90–179	8	940	1,123.0	1.19	85.9	67.8	88.2
180–325	4	1028	1,118.2	1.09	81.9	58.5	85.8
University Totals	140	6,587	9,738.7	1.48	62.7	52.3	72.9

¹These percentages include both scheduled instruction and bookings.

Source: Scheduling data from October 1997 Student and Bookings Databases.

Institutional Analysis
July 20, 1998

Chart 12 - Average Monday to Friday Room Utilization by Seating Capacity

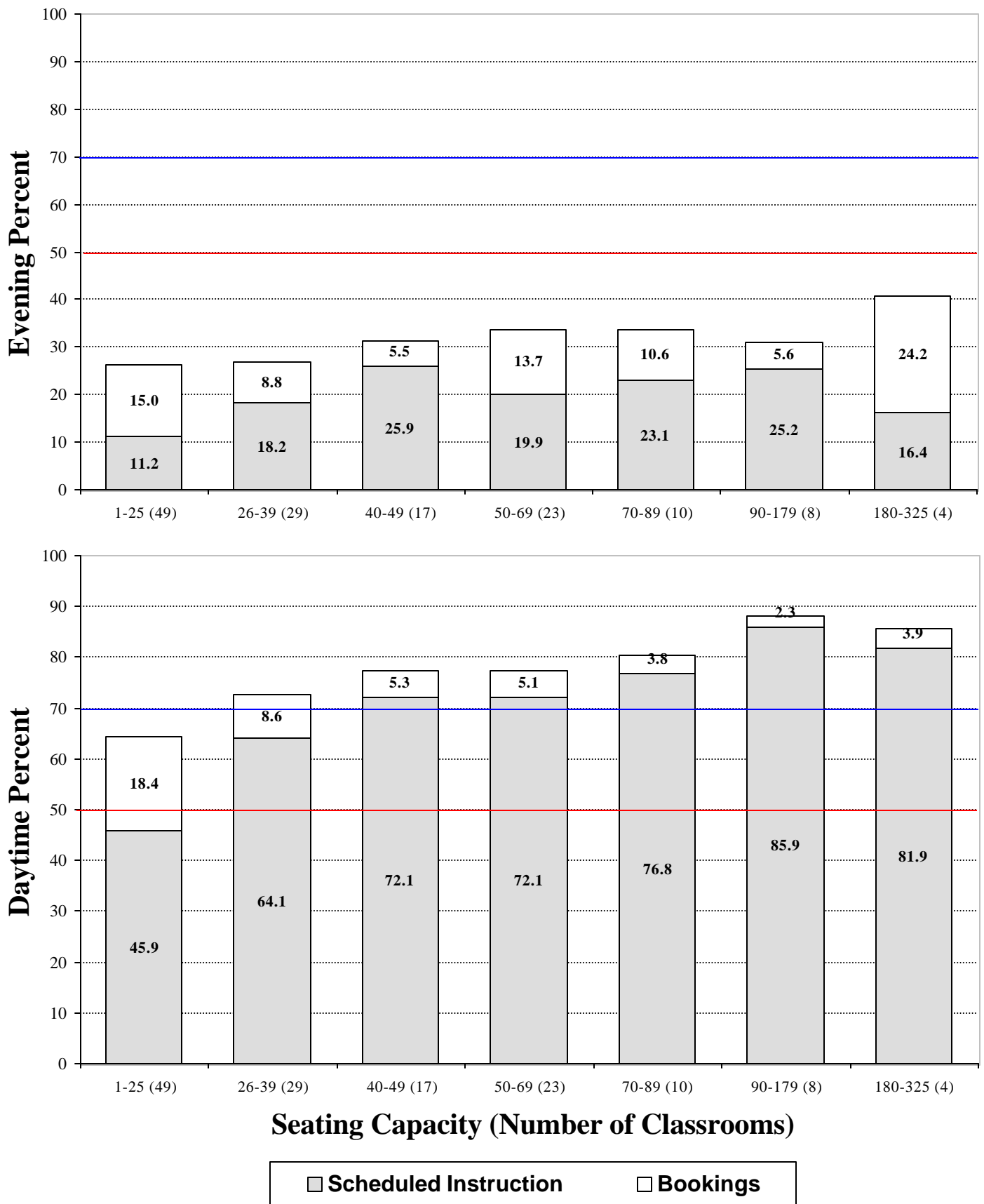


TABLE 2
1997/98 Building Inventory

Building	No. of Rooms	No. of Seats	Area in Sq. M.	Sq. M. per Seat	Monday - Friday % Sched Inst Room Use	Daytime % Seat Use	% Total¹ Room Use
Business & Economics	1	30	68.2	2.27	11.3	4.6	36.5
Begbie	6	540	919.1	1.70	45.8	38.0	52.1
Classroom	19	801	1,263.3	1.58	66.0	56.5	69.7
Clearihue	48	1,666	2,463.6	1.48	65.7	54.4	81.8
Cornett	18	1,041	1,352.4	1.30	62.9	56.8	74.3
Cunningham	2	68	100.7	1.48	61.9	39.0	69.5
Elliott	11	775	1,034.2	1.33	76.5	59.02	79.2
Fine Arts	4	112	255.5	2.28	53.8	45.1	63.0
H&SD	4	238	356.5	1.50	56.9	51.0	72.5
MacLaurin	22	1,172	1,678.2	1.43	60.2	47.9	66.4
McKinnon	3	110	163.0	1.48	66.7	58.3	68.9
Visual Arts	2	34	84.0	2.47	19.4	16.6	21.9
University Totals	140	6,587	9,738.7	1.48	62.7	52.3	72.9

¹These percentages include both scheduled instruction and bookings.

Source: Scheduling data from October 1997 Student and Bookings Databases.

Chart 13 - Average Monday to Friday Room Utilization by Building

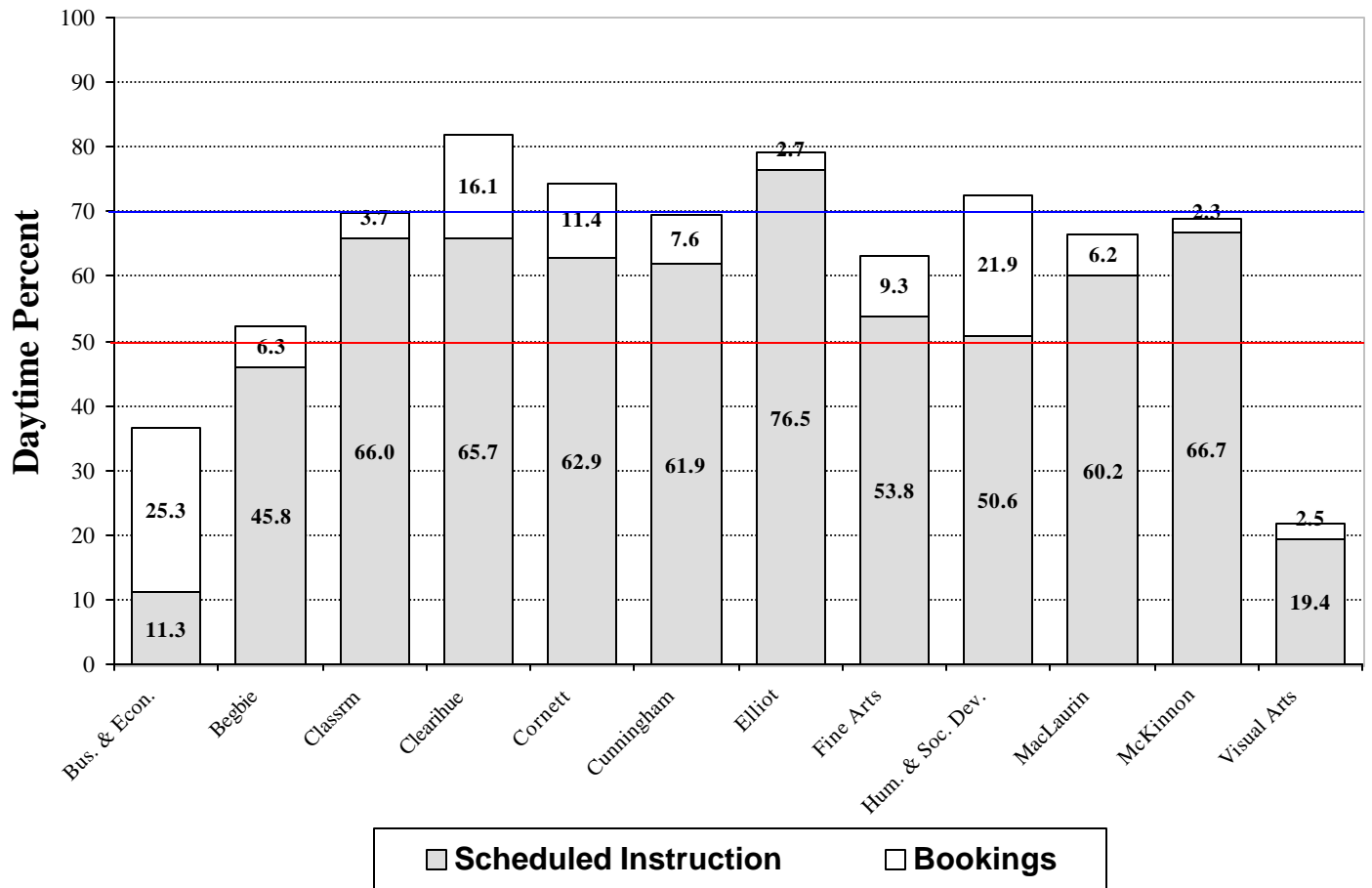
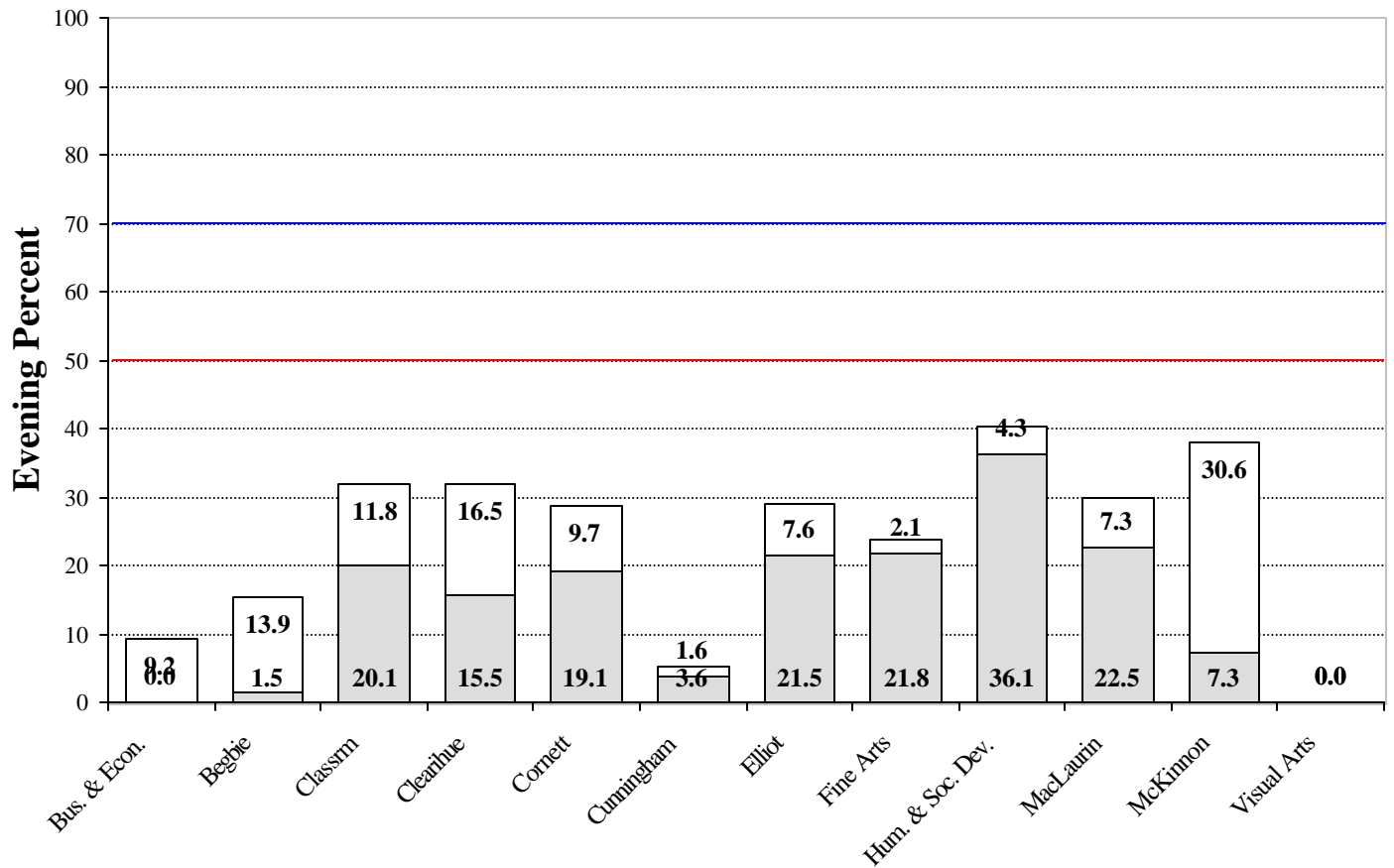
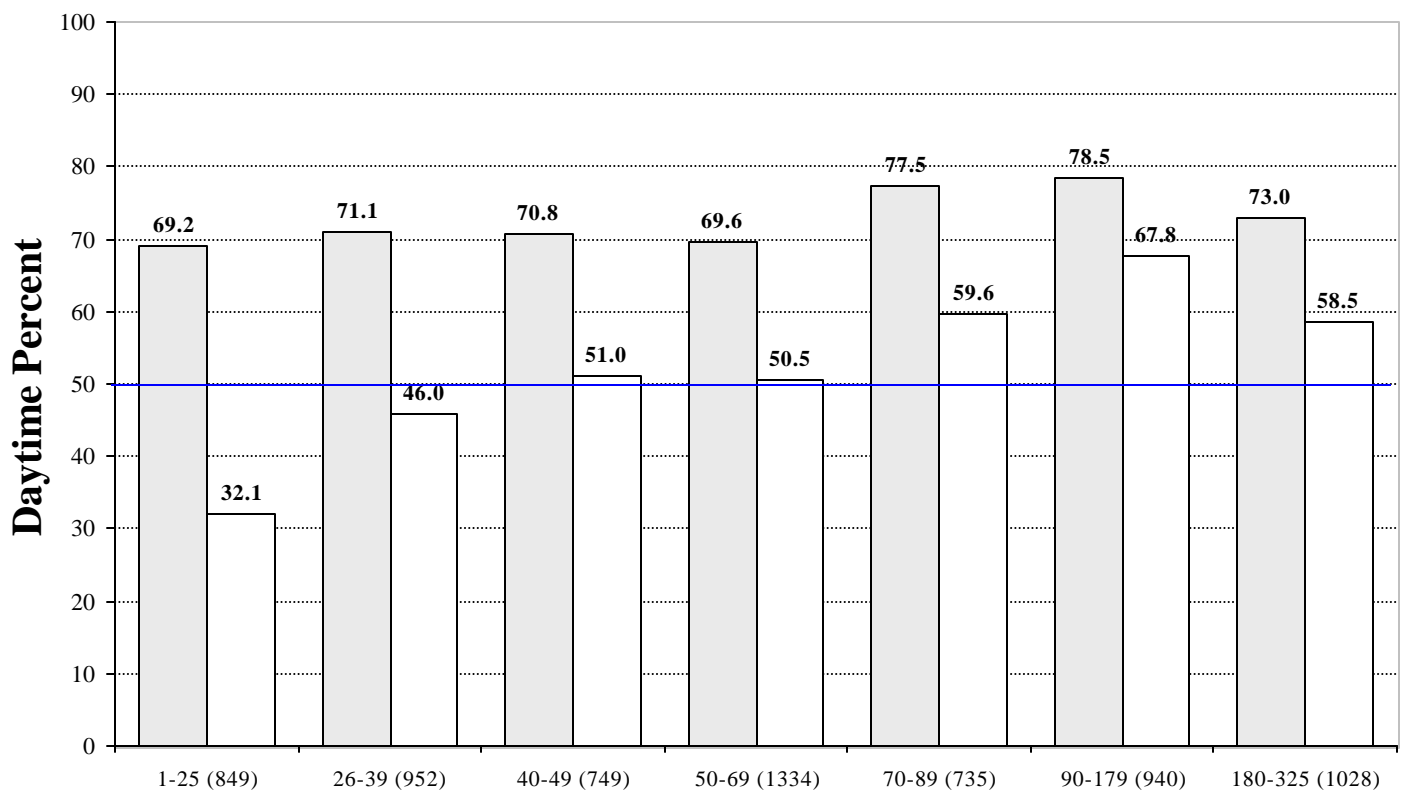
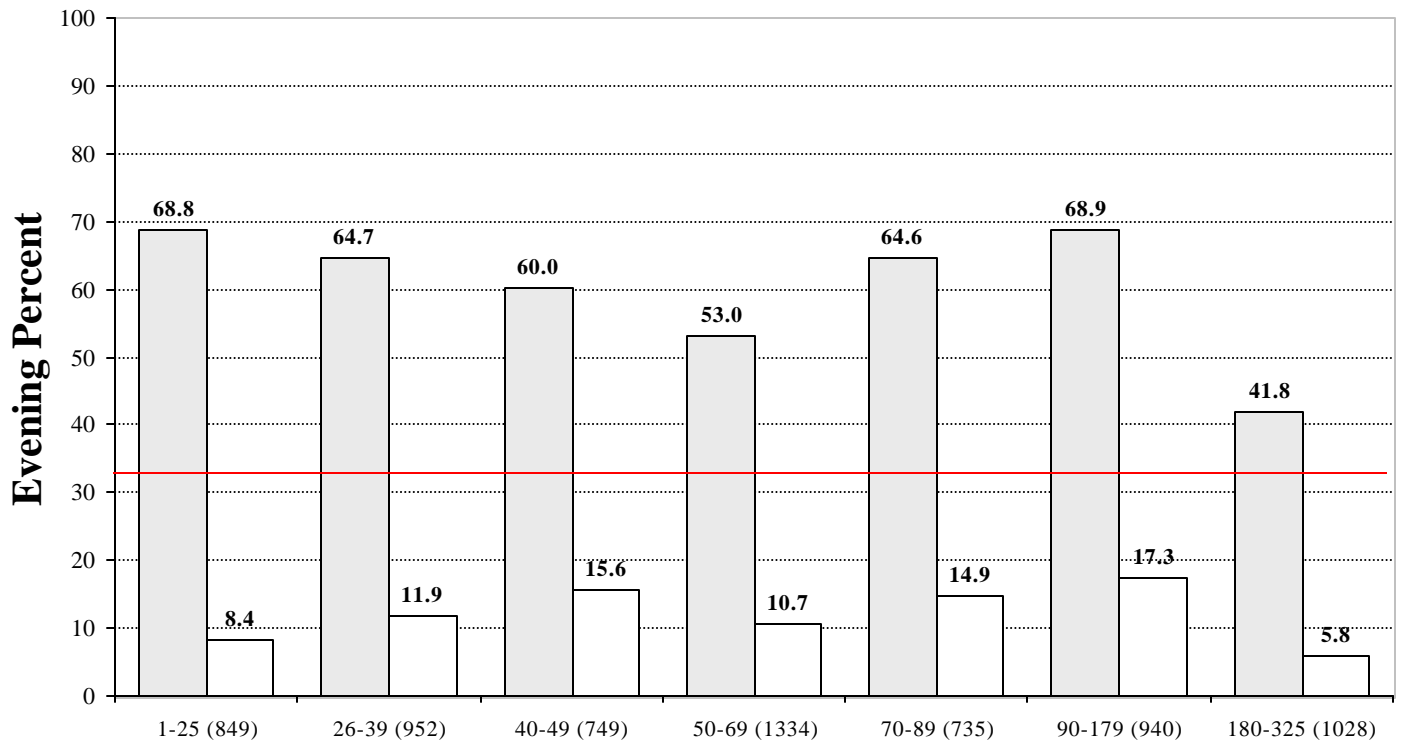


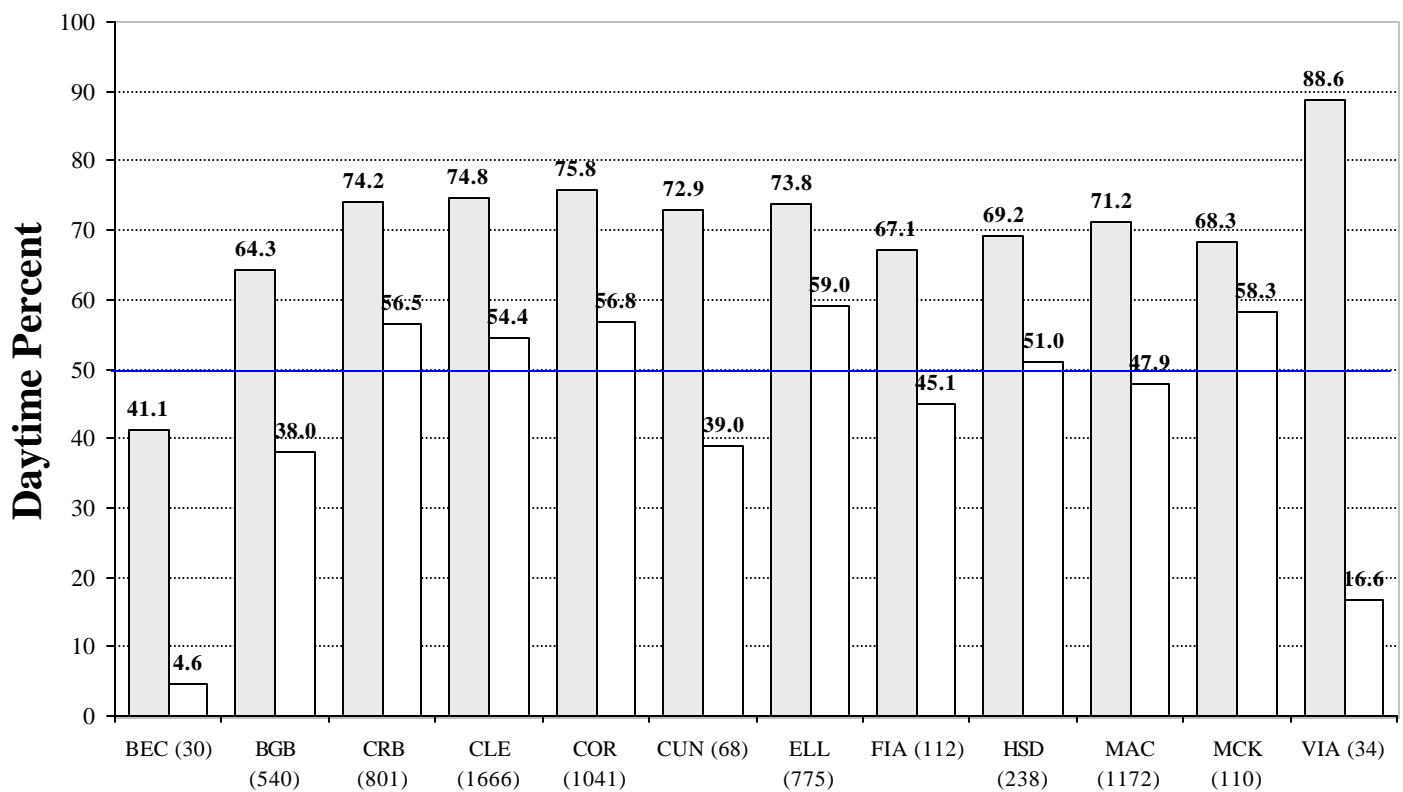
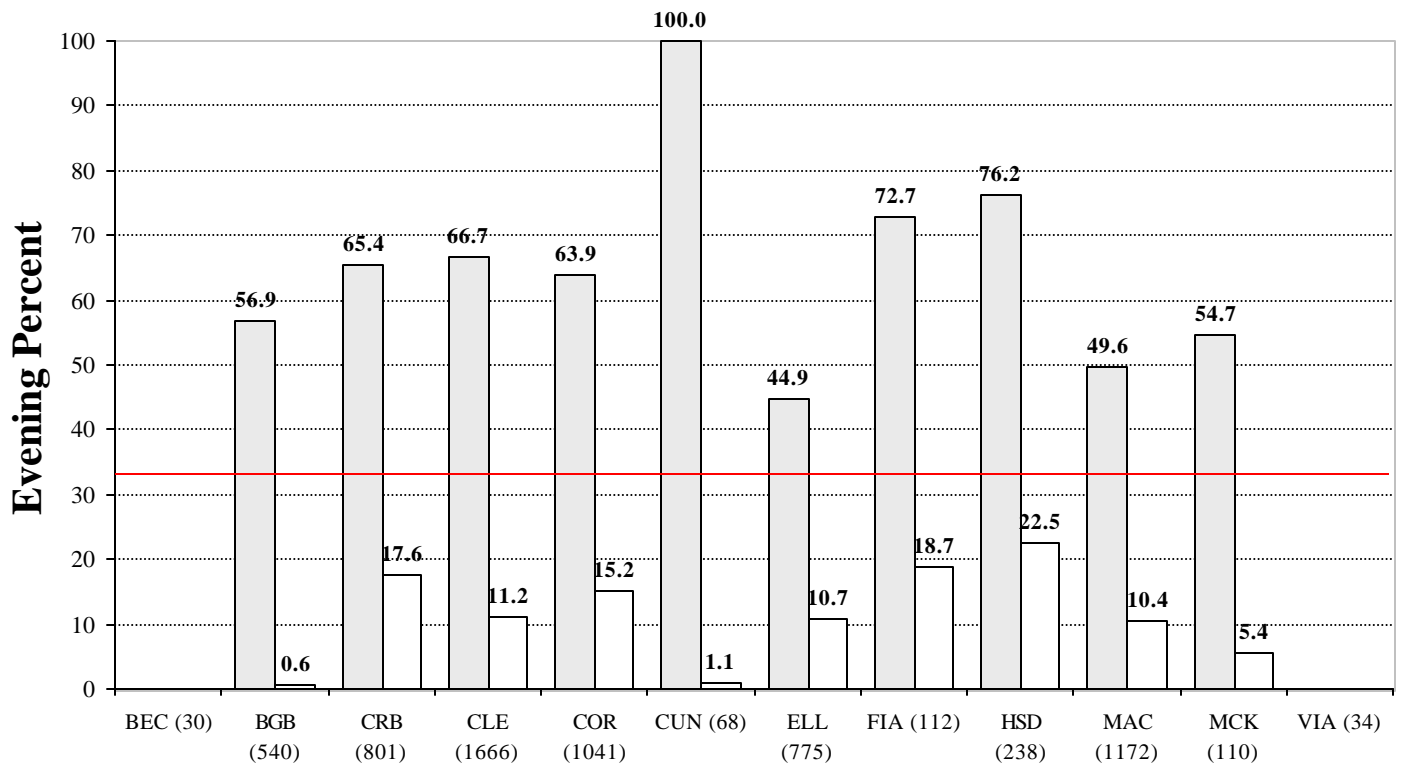
Chart 14 - Monday to Friday Seat Utilization for Scheduled Instruction by Room Capacity



Seating Capacity (Number of Classrooms)



Chart 15 - Average Monday to Friday Seat Utilization for Scheduled Instruction by Building



Building (Number of Seats)



TABLE 3**Historical Monday - Friday Percentage Utilization Summary****Room Utilization**

	82/83	83/84	84/85	85/86	86/87	87/90*	90/91	91/92	92/93	93/94	94/95	95/96	96/97	97/98
Day														
Scheduled Instruction	53.8	56.8	59.4	57.4	59.8	-	68.6	70.9	66.9	64.5	63.1	67.4	67.6	62.7
Bookings	4.1	4.1 ¹	2.9	2.7	6.8	-	8.1	12.8	12.0	11.8	11.7	10.6	10.5	10.2
Total	57.8	60.9	62.3	60.2	66.6	-	76.7	83.7	78.9	76.3	74.8	78.0	78.1	72.9
Evening														
Scheduled Instruction	12.1	12.9	14.2	13.0	15.9	-	18.2	18.9	17.4	18.5	18.9	19.0	17.4	15.0
Bookings	5.9	5.9 ¹	4.8	5.1	7.3	-	9.6	12.1	14.8	14.1	14.0	13.5	13.2	11.2
Total	18.0	18.8	18.9	18.1	23.2	-	27.8	31.0	32.2	32.6	32.9	32.5	30.7	26.2

Seat Utilization**(Scheduled Instruction)**

Day	41.2	45.1	45.3	43.6	45.1	-	51.5	53.2	50.2	47.5	47.6	53.3	55.1	52.3
Eve	6.2	7.6	8.0	7.1	8.9	-	11.0	10.7	9.8	10.9	10.1	11.4	10.6	10.0

¹As 1983/84 Bookings Data were unavailable, the 1982/83 levels were assumed.

*Not Available

Source: Scheduling data from October Student and Bookings Databases.

Institutional Analysis
July 20, 1998

Chart 16 - Historical Monday to Friday Daytime Utilization Summary

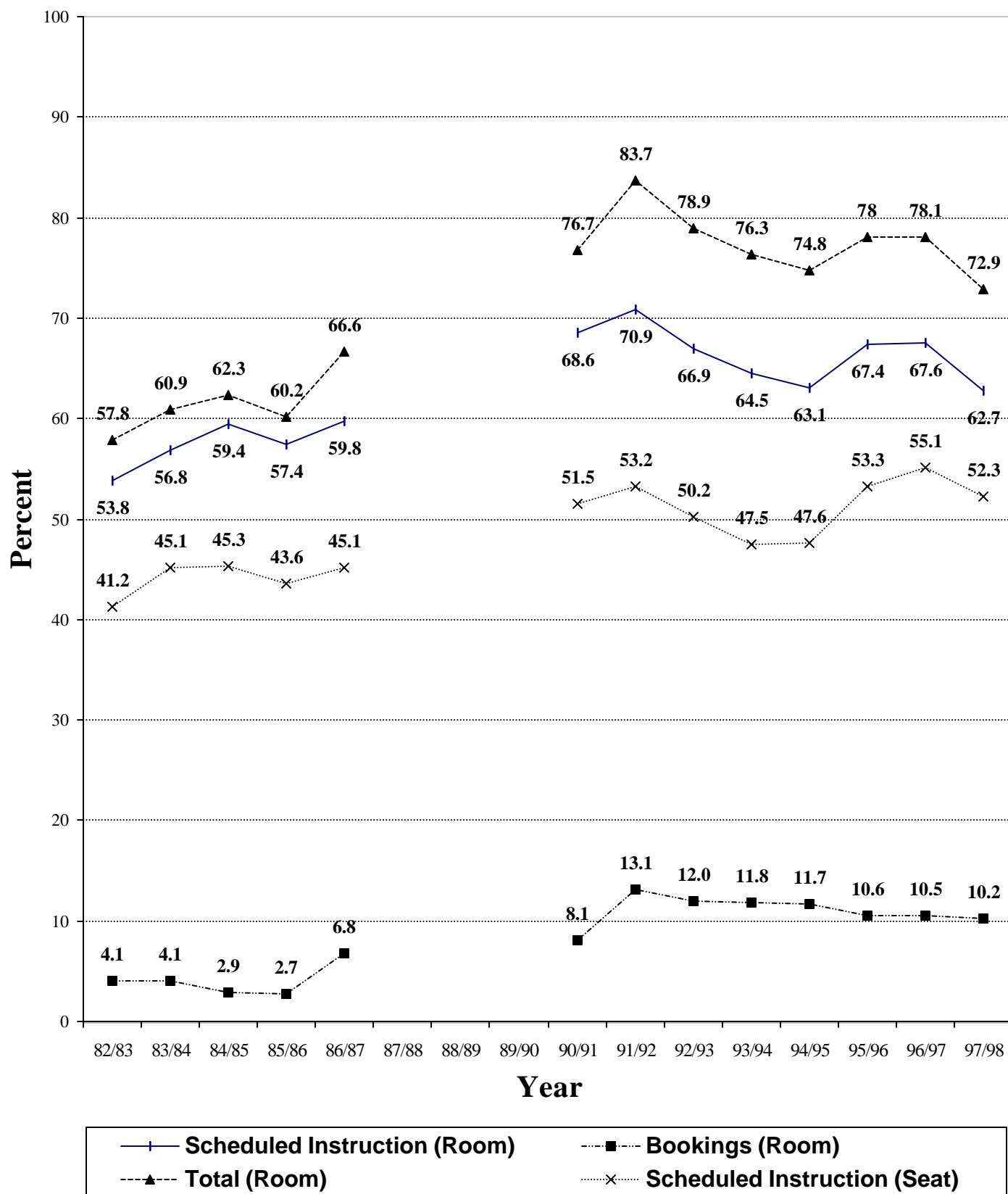
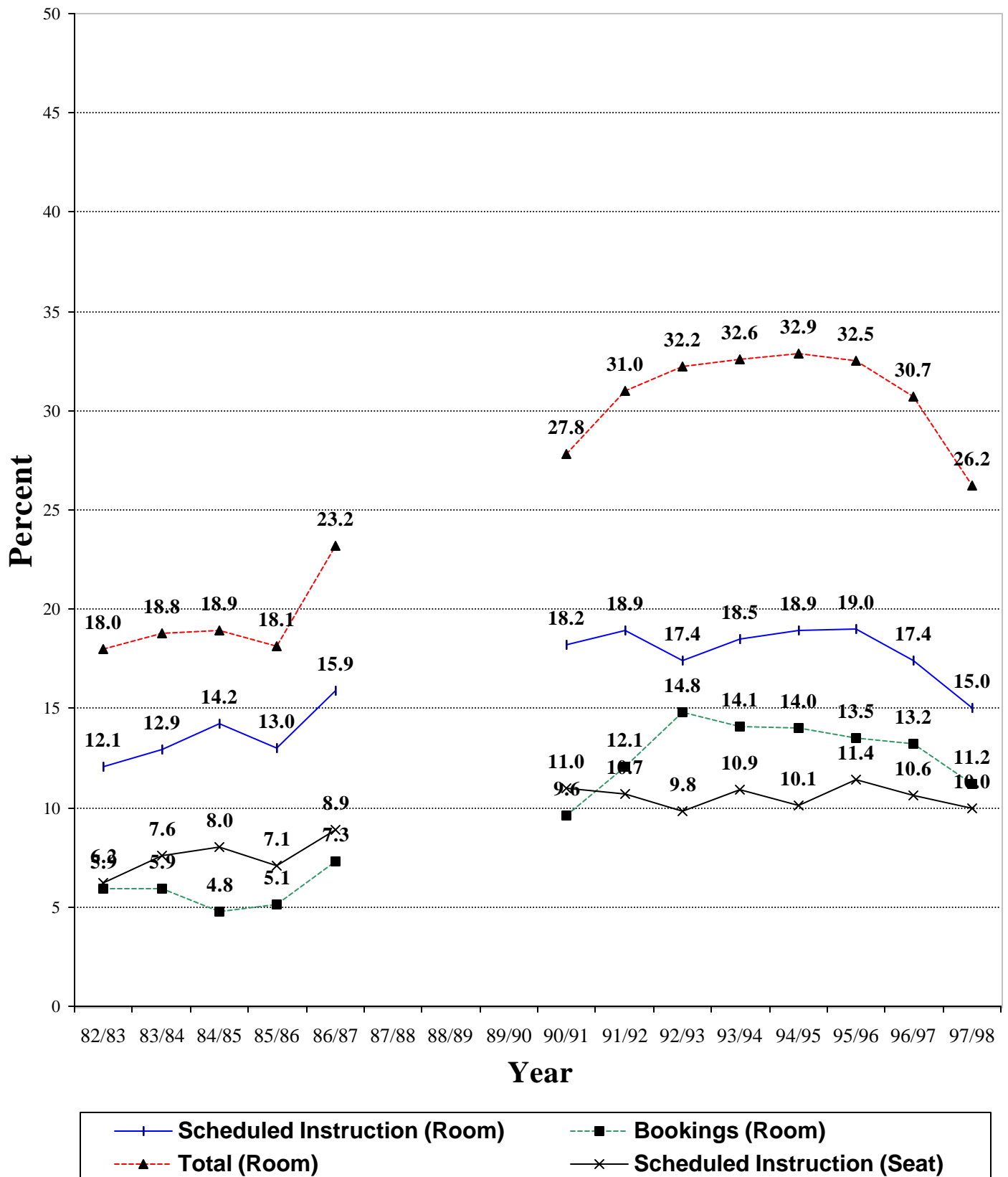


Chart 17 - Historical Monday to Friday Evening Utilization Summary



APPENDIX

1997/98 Classroom Inventory

Room Size Interval	Room No.		No. of Seats	Area in Sq. M.	Sq. M. per Seat	Sched Instr % Day Use	Total % Day Use
1 - 25	CRB	C109	6	12.6	2.10	57.5	57.5
	CRB	C115	6	12.6	2.10	57.5	59.4
	CRB	C117	6	12.6	2.10	57.5	57.5
	CRB	C119	6	12.6	2.10	57.5	57.5
	CRB	C121	6	14.0	2.33	57.5	57.5
	CRB	C123	6	14.0	2.33	57.5	57.5
	CLE	D250	10	20.7	2.07	35.0	60.9
	CUN	005	10	24.1	2.41	73.8	73.8
	MCK	152	10	25.8	2.58	15.0	20.0
	CLE	B346	12	24.3	2.03	45.0	57.8
	CLE	C116	12	22.1	1.84	45.0	69.9
	CLE	C118	12	22.1	1.84	61.3	73.3
	CLE	B446	14	24.3	1.74	60.0	70.0
	CLE	D261	14	25.7	1.84	40.0	48.4
	COR	A132	14	27.5	1.96	23.8	37.2
	CLE	C214	16	26.5	1.66	52.5	61.2
	FIA	108	16	75.4	4.71	0.0	30.0
	VIA	A220	16	39.3	2.46	30.0	30.0
	CLE	C117	18	34.4	1.91	61.3	78.4
	CLE	D123	18	32.4	1.80	0.0	100.0
	CLE	D127	18	31.2	1.73	0.0	100.0
	CLE	D129	18	31.6	1.76	0.0	100.0
	CLE	D133	18	32.2	1.79	0.0	100.0
	COR	A372	18	37.7	2.09	30.0	52.9
	COR	B115	18	39.2	2.18	0.0	100.0
	MAC	D117	18	31.2	1.73	50.0	54.1
	VIA	A248	18	44.7	2.48	8.8	13.8
	CLE	B215	20	37.6	1.88	46.3	71.4
	CLE	B315	20	39.1	1.96	72.5	84.9
	CLE	B415	20	37.4	1.87	77.5	85.0
	CLE	C316	20	37.5	1.88	65.0	73.3
	COR	A339	20	33.5	1.68	46.3	65.2
	CRB	C114	20	44.9	2.25	48.8	59.0
	CRB	C124	20	44.9	2.25	67.5	74.1
	FIA	209	20	44.0	2.20	47.5	47.7
	ELL	164	22	42.4	1.93	65.0	67.1
	ELL	165	22	43.0	1.95	65.0	69.5
	CLE	D124	24	41.1	1.71	85.0	87.7
	CLE	D128	24	40.8	1.70	92.5	96.3
	CLE	D130	24	34.8	1.45	92.5	92.5
	CLE	D134	24	40.5	1.69	70.0	79.2

APPENDIX (cont'd)

1997/98 Classroom Inventory

Room Size Interval	Room No.		No. of Seats	Area in Sq. M.	Sq. M. per Seat	Sched Instr % Day Use	Total % Day Use
26 - 39	COR	B107	24	33.6	1.40	41.3	49.6
	COR	B109	24	33.6	1.40	48.8	54.2
	ELL	161	24	41.9	1.75	82.5	84.9
	HSD	A250	24	52.3	2.18	1.3	69.1
	MAC	D281	24	54.7	2.28	63.8	67.1
	BGB	204	25	67.8	2.71	27.5	27.5
	BGB	205	25	67.7	2.71	36.3	36.3
	MAC	B120	25	45.6	1.82	30.0	30.0
	49		849	1709.5	2.01	45.9	64.3
	FIA	104	26	59.5	2.29	75.0	80.4
	CLE	C111	28	35.7	1.28	67.5	72.4
	CLE	C113	28	38.4	1.37	71.3	83.0
	CLE	C115	28	54.8	1.96	82.5	88.5
	BEC	363	30	68.2	2.27	11.3	36.5
	CLE	B020	30	43.8	1.46	7.5	100.0
	HSD	A260	30	61.7	2.06	51.3	62.8
	HSD	A264	30	60.4	2.01	57.5	63.5
	MAC	A166	30	66.7	2.22	66.3	70.6
	MAC	A541	30	52.1	1.74	45.0	45.0
	MAC	D105	30	42.5	1.42	56.3	58.0
	CLE	A304	32	48.1	1.50	71.3	75.3
	CLE	C108	32	57.1	1.78	77.5	85.7
	COR	A128	32	41.4	1.29	77.5	79.7
	CLE	A118	34	55.7	1.64	68.8	70.8
	CLE	D126	35	58.7	1.68	72.5	79.0
	CLE	D132	35	58.8	1.68	85.0	85.5
	CRB	C126	35	68.0	1.94	60.0	64.3
	CRB	C128	35	67.3	1.92	67.5	76.0
	CRB	C130	35	67.7	1.93	75.0	78.2
	MAC	D107	35	36.7	1.05	48.8	57.1
	MAC	D109	35	37.7	1.08	40.0	47.5
	MAC	D115	35	47.8	1.37	60.0	67.0
	MAC	D116	35	48.0	1.37	57.5	59.9
	COR	B145	36	76.4	2.12	75.0	81.7
	CLE	C109	37	53.4	1.44	75.0	75.0
	CLE	A203	38	60.0	1.58	90.0	90.4
	CLE	A204	38	48.0	1.26	70.0	76.9
	MAC	D118	38	48.1	1.27	95.0	95.0
	29		952	1562.7	1.64	64.1	72.6

APPENDIX (cont'd)

1997/98 Classroom Inventory

Room Size Interval	Room No.		No. of Seats	Area in Sq. M.	Sq. M. per Seat	Sched Instr % Day Use	Total % Day Use
40 - 49	CLE	A211	40	51.6	1.29	87.5	88.1
	MAC	D287	40	91.0	2.28	65.0	67.3
	CLE	C110	42	57.8	1.38	80.0	83.7
	CLE	D125	42	50.2	1.20	87.5	88.0
	CLE	D131	42	50.2	1.20	90.0	90.0
	CLE	D267	42	51.7	1.23	85.0	86.2
	MAC	D283	44	57.8	1.31	45.0	53.5
	CRB	C108	45	70.5	1.57	65.0	66.2
	MAC	A168	45	75.9	1.69	61.3	80.0
	MAC	A169	45	82.0	1.82	52.5	60.0
	MAC	D101	45	84.4	1.88	60.0	73.3
	MAC	D103	45	84.4	1.88	71.3	78.7
	MAC	D110	45	56.3	1.25	71.3	77.2
	MAC	D114	45	56.0	1.24	45.0	59.3
	CRB	C125	46	91.7	1.99	82.5	82.5
	CLE	A206	48	64.1	1.34	82.5	88.1
	CLE	A306	48	64.1	1.34	95.0	95.0
	17		749	1139.7	1.52	72.1	77.5
50 - 69	BGB	152	50	134.9	2.70	43.8	53.7
	BGB	157	50	135.8	2.72	42.5	54.6
	CRB	C113	50	88.0	1.76	22.5	44.4
	ELL	166	50	67.6	1.35	75.0	83.2
	FIA	103	50	76.6	1.53	92.5	94.0
	MAC	D111	50	97.4	1.95	82.5	89.3
	MCK	150	50	68.6	1.37	87.5	89.3
	MCK	151	50	68.6	1.37	97.5	97.5
	ELL	162	54	72.0	1.33	62.5	67.2
	CLE	A215	58	77.9	1.34	90.0	90.7
	CUN	146	58	76.6	1.32	50.0	65.2
	CRB	C112	59	93.8	1.59	77.5	80.1
	ELL	160	59	67.4	1.14	85.0	86.0
	COR	A121	60	109.1	1.82	62.5	70.5
	CLE	A301	62	74.7	1.20	75.0	79.2
	COR	A229	62	79.6	1.28	85.0	85.2
	CLE	A309	63	88.4	1.40	70.0	70.1
	CLE	A303	64	73.4	1.15	87.5	87.7
	BGB	158	65	168.9	2.60	56.3	65.4
	COR	A129	65	79.6	1.22	67.5	71.6
	ELL	060	68	86.7	1.28	62.5	63.5
	ELL	061	68	86.1	1.27	93.8	94.8
	CLE	A201	69	87.5	1.27	90.0	92.7
	23		1334	2059.2	1.54	72.1	77.2

APPENDIX (cont'd)

1997/98 Classroom Inventory

Room Size Interval	Room No.		No. of Seats	Area in Sq. M.	Sq. M. per Seat	Sched Instr % Day Use	Total % Day Use
70 - 89	CLE	A207	70	129.7	1.85	65.0	73.7
	COR	A125	70	82.9	1.18	72.5	76.0
	COR	A225	70	82.9	1.18	75.0	77.1
	CRB	C122	72	128.8	1.79	70.0	73.1
	CRB	C116	73	128.7	1.76	90.0	92.6
	CLE	A307	74	88.0	1.19	75.0	78.1
	CLE	A311	74	89.8	1.21	67.5	71.2
	CRB	C118	75	88.0	1.17	87.5	89.7
	CLE	C112	77	115.7	1.50	87.5	93.2
	ELL	062	80	91.9	1.15	77.5	80.4
	10		735	1026.4	1.40	76.8	80.5
90 - 179	COR	A120	96	103.0	1.07	87.5	87.8
	COR	A221	108	109.1	1.01	90.0	92.2
	COR	B108	108	133.4	1.24	87.5	87.9
	COR	B112	108	132.8	1.23	82.5	85.8
	COR	B143	108	117.1	1.08	80.0	83.1
	MAC	D288	110	147.4	1.34	77.5	83.1
	ELL	167	148	198.1	1.34	90.0	91.3
	HSD	A240	154	182.1	1.18	92.5	94.5
	8		940	1123.0	1.19	85.9	88.2
180 - 325	ELL	168	180	237.1	1.32	82.5	83.1
	CRB	C103	200	202.6	1.01	95.0	96.9
	MAC	A144	323	334.5	1.04	81.3	87.6
	BGB	159	325	344.0	1.06	68.8	75.4
	4		1028	1118.2	1.09	81.9	85.8
University Totals	140		6587	9738.7	1.48	62.7	72.9

Institutional Analysis
July 20, 1998