

University of Victoria

Classroom Utilization Report
2005/06

Prepared by: Jim Martell
Alan Wilson

Office of Institutional Planning and Analysis
February, 2006

<http://www.inst.uvic.ca>

Classroom Utilization

2005-2006

Table of Contents

Introduction

Chart 1	—	Monday Room Utilization by Starting Time
Chart 2	—	Tuesday Room Utilization by Starting Time
Chart 3	—	Wednesday Room Utilization by Starting Time
Chart 4	—	Thursday Room Utilization by Starting Time
Chart 5	—	Friday Room Utilization by Starting Time
Chart 6	—	Saturday Room Utilization by Starting Time
Chart 7	—	Average Monday to Friday Room Utilization by Starting Time
Chart 8	—	Monday to Friday Seat Utilization for Scheduled Instruction by Starting Time
Chart 9	—	Average Monday to Friday Seat Utilization for Scheduled Instruction by Starting Time
Table 1	—	Monday to Friday Daytime Use by Seating Capacity
Chart 10	—	Average Monday to Friday Daytime Room Utilization by Seating Capacity
Chart 11	—	Average Monday to Friday Evening Room Utilization by Seating Capacity
Chart 12	—	Average Monday to Friday Seat Utilization for Scheduled Instruction by Room Capacity
Table 2	—	Monday to Friday Daytime Use by Building
Chart 13	—	Average Monday to Friday Daytime Room Utilization by Building
Chart 14	—	Average Monday to Friday Evening Room Utilization by Building
Chart 15	—	Average Monday to Friday Seat Utilization for Scheduled Instruction by Building
Table 3	—	Historical Monday to Friday Percentage Utilization Summary
APPENDIX	—	2005/06 Classroom Inventory

Introduction

Classroom Utilization 2005/06

Methodology

This report displays the level of classroom use as of October 2005. As in previous iterations, two components are identified: scheduled instruction and bookings. Scheduled instruction consists of regular classroom instruction including lectures, tutorials, some discussion groups, and labs offered in classrooms. Bookings consist of more casual classroom use, such as staff and department meetings, club usage, and conferences. No bookings are included with scheduled instruction data. However, some usage included with the bookings is actually composed of tutorials and other sections associated with regular courses. This activity can appear here due to limitations in the university course database, which cannot handle courses that meet in one room for a part of a term and then move, in that term, to another room. The system also cannot handle some short-term immersion-type courses that meet throughout the day.

Room use is divided into two time periods: daytime (8:30 a.m. – 4:30 p.m.) and evening (4:30 p.m. – 10:00 p.m.). Note that a room in use from 5:30 p.m. – 6:30 p.m. will fill the 5:30 – 6:00 time slot and half the 6:00 – 7:00 time slot. A 70% daytime room use rate is considered by many as a reasonable target. Hence a line at 70% appears on all charts that tabulate room usage. For seat use, 50% is considered a reasonable target. Hence a line at 50% appears on all charts that tabulate seat usage. Note, however, that seat usage for bookings data is not maintained. This means that all seat-use results will be for scheduled instruction only.

Results

Charts 1 – 6 show daily room utilization for both scheduled instruction and bookings. Overall room usage gone up from 57.9% last year to 60.4%. This improvement in room utilization can be attributed to the 5.3% decrease in the number of classrooms, from 133 in 2004/05 to 126 this year. As in previous years room usage drops substantially on Friday (to 44.9%), mainly because scheduled instruction drops off dramatically in the afternoon and evening. Charts 8 and 9 detail seat use for scheduled instruction and show a similar pattern to room usage: overall seat utilization has risen from 33.4% to 36.3%.

Table 1 and Charts 10 – 12 examine utilization by room-size category. Larger rooms are still used more frequently than smaller ones. Although overall room usage is up from last year, this is due to the rise in scheduled instruction; bookings as a percentage of room use have gone from 14.3% last year to 11.4% this year – a 20% drop. Table 2 and Charts 13 – 15 examine utilization by building. The most heavily used buildings are HSD, Cornett, and Clearihue. The least-used classrooms continue to be in the Fraser building (44.9% daytime room usage). Table 3 summarizes historical classroom use. Daytime room utilization, at 78.0%, is higher than it has been since 1996/97. Evening room utilization is higher than it has been in more than 15 years, as is current seat usage for scheduled instruction. The appendix details use by individual classroom.

Chart 1
University of Victoria
Monday Room Utilization by Starting Time

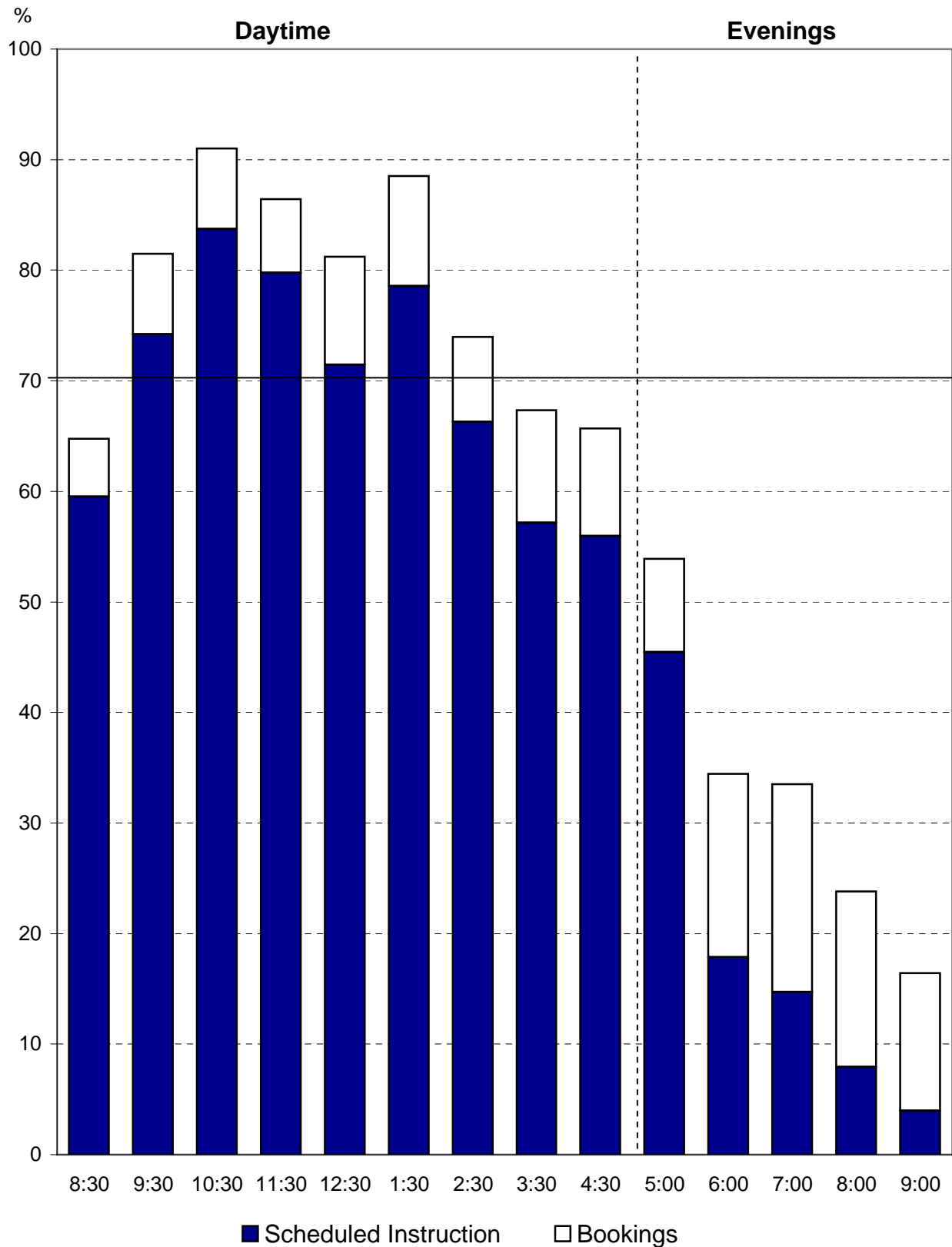


Chart 2
University of Victoria
Tuesday Room Utilization by Starting Time

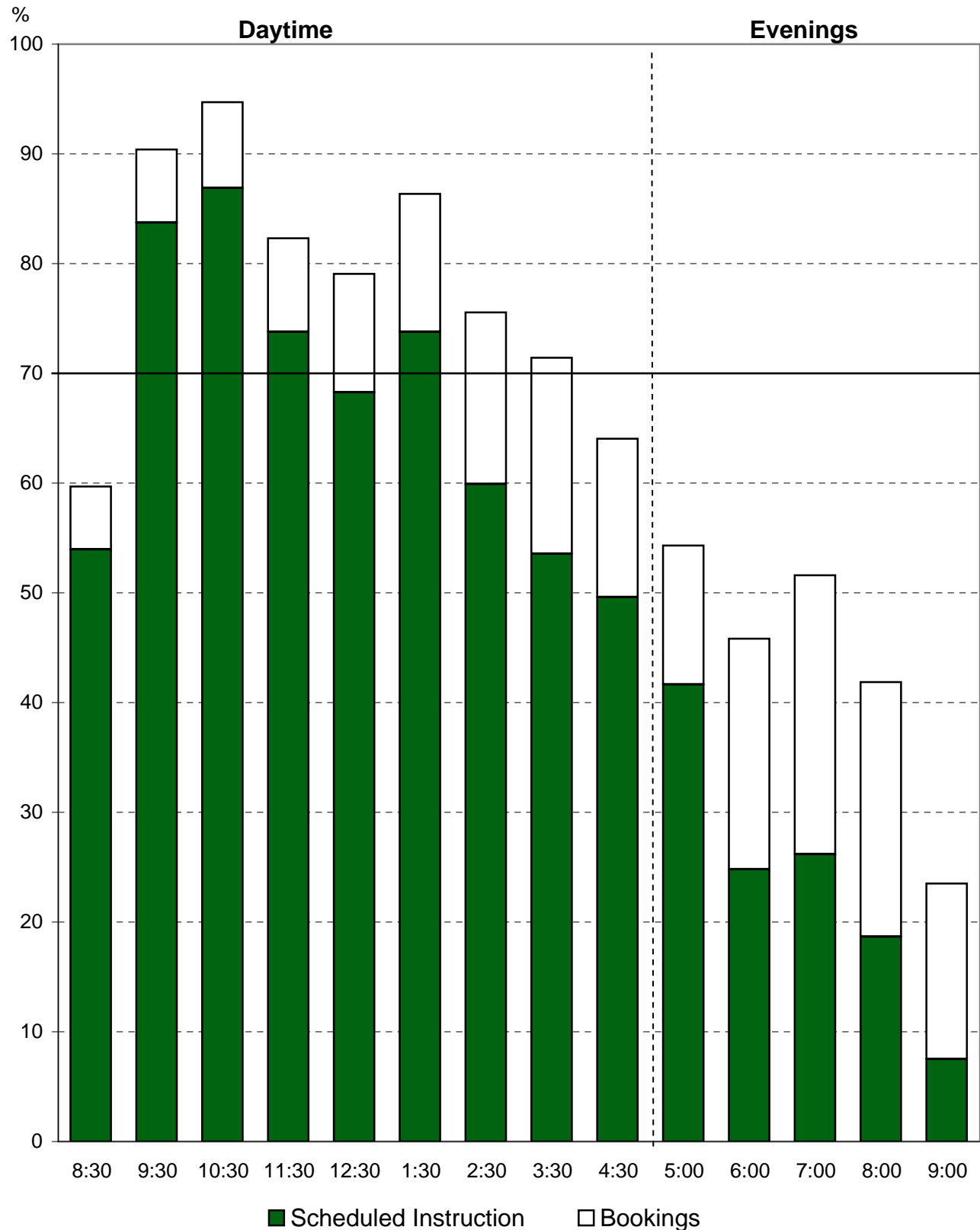


Chart 3
University of Victoria
Wednesday Room Utilization by Starting Time

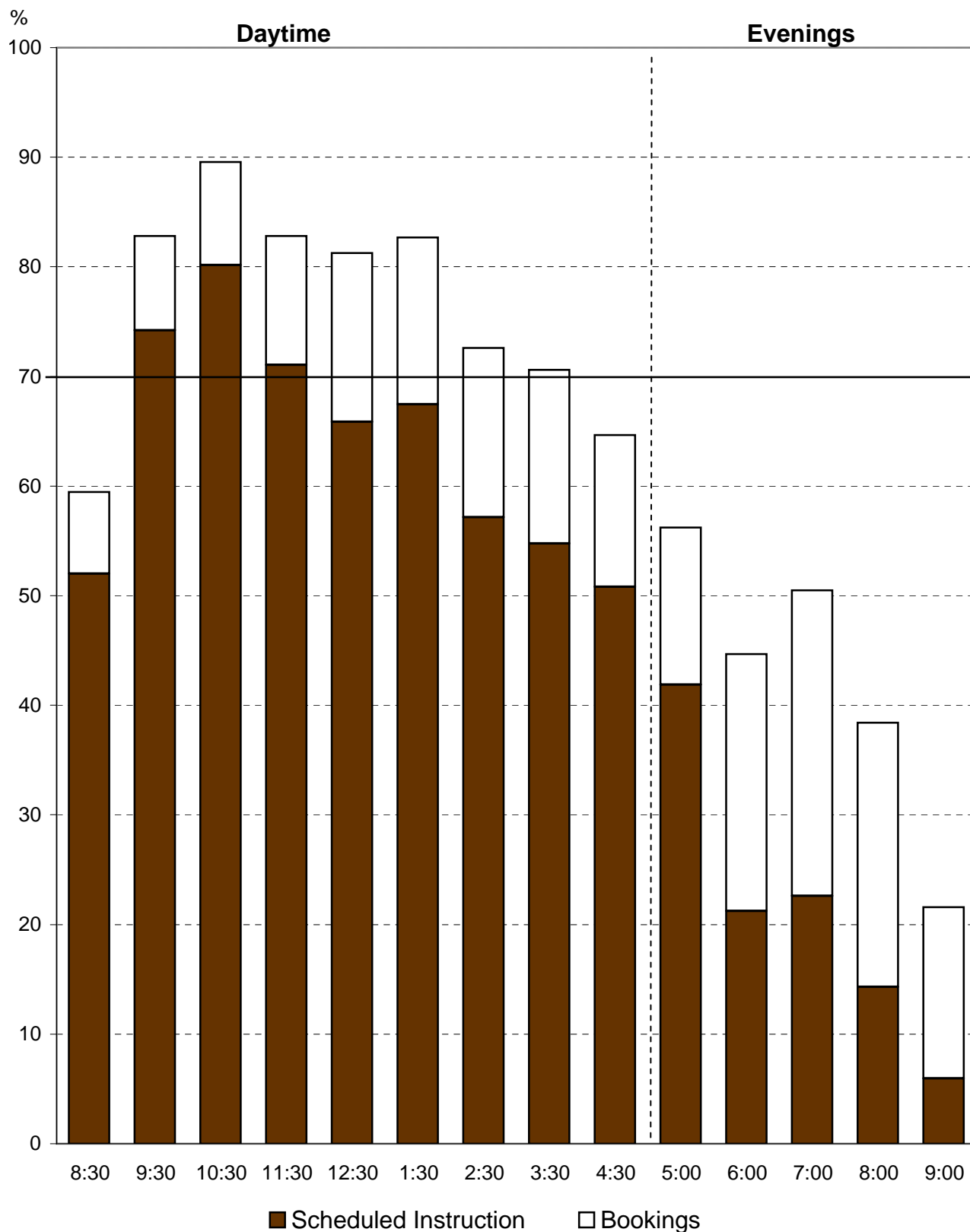


Chart 4
University of Victoria
Thursday Room Utilization by Starting Time

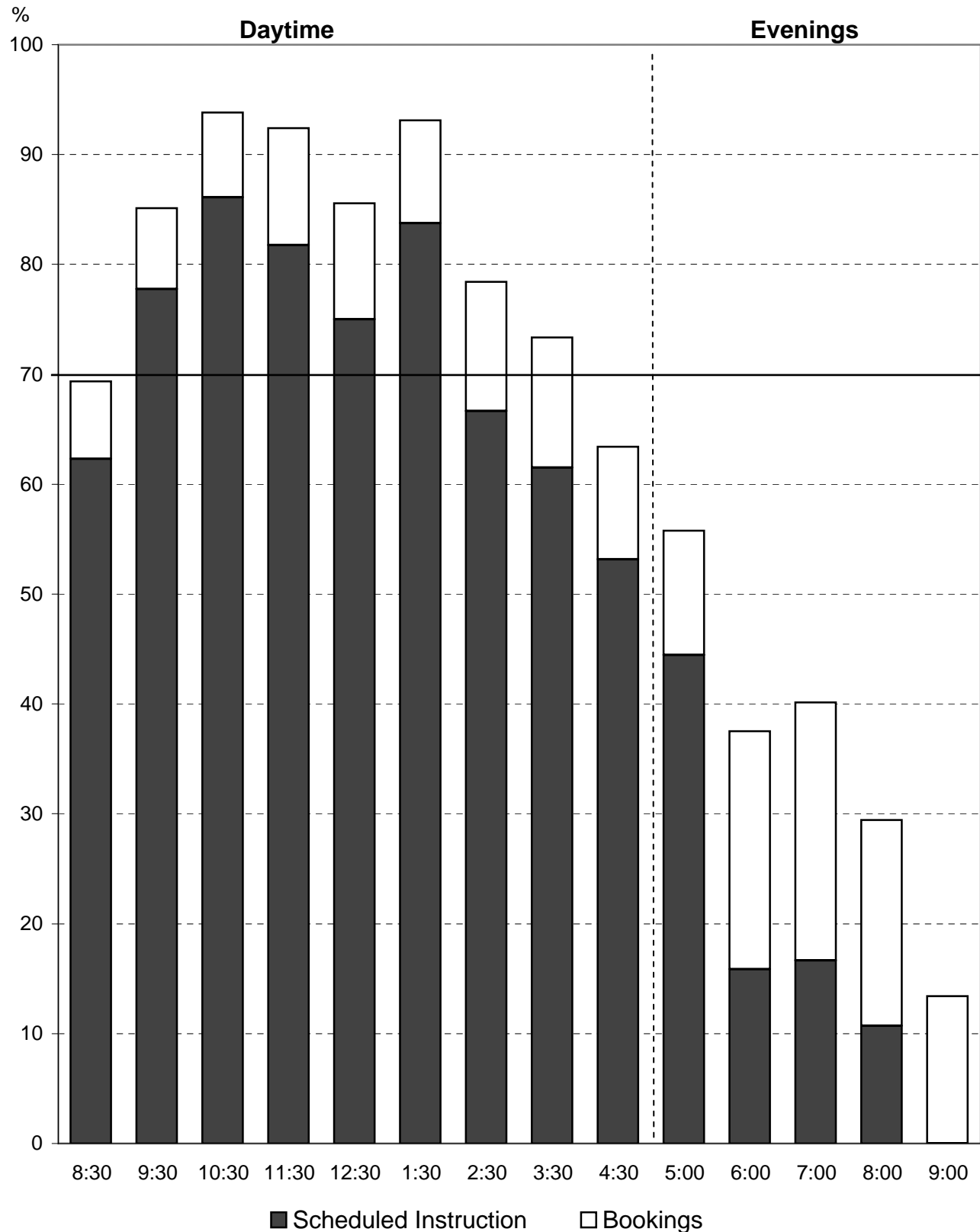


Chart 5
University of Victoria
Friday Room Utilization by Starting Time

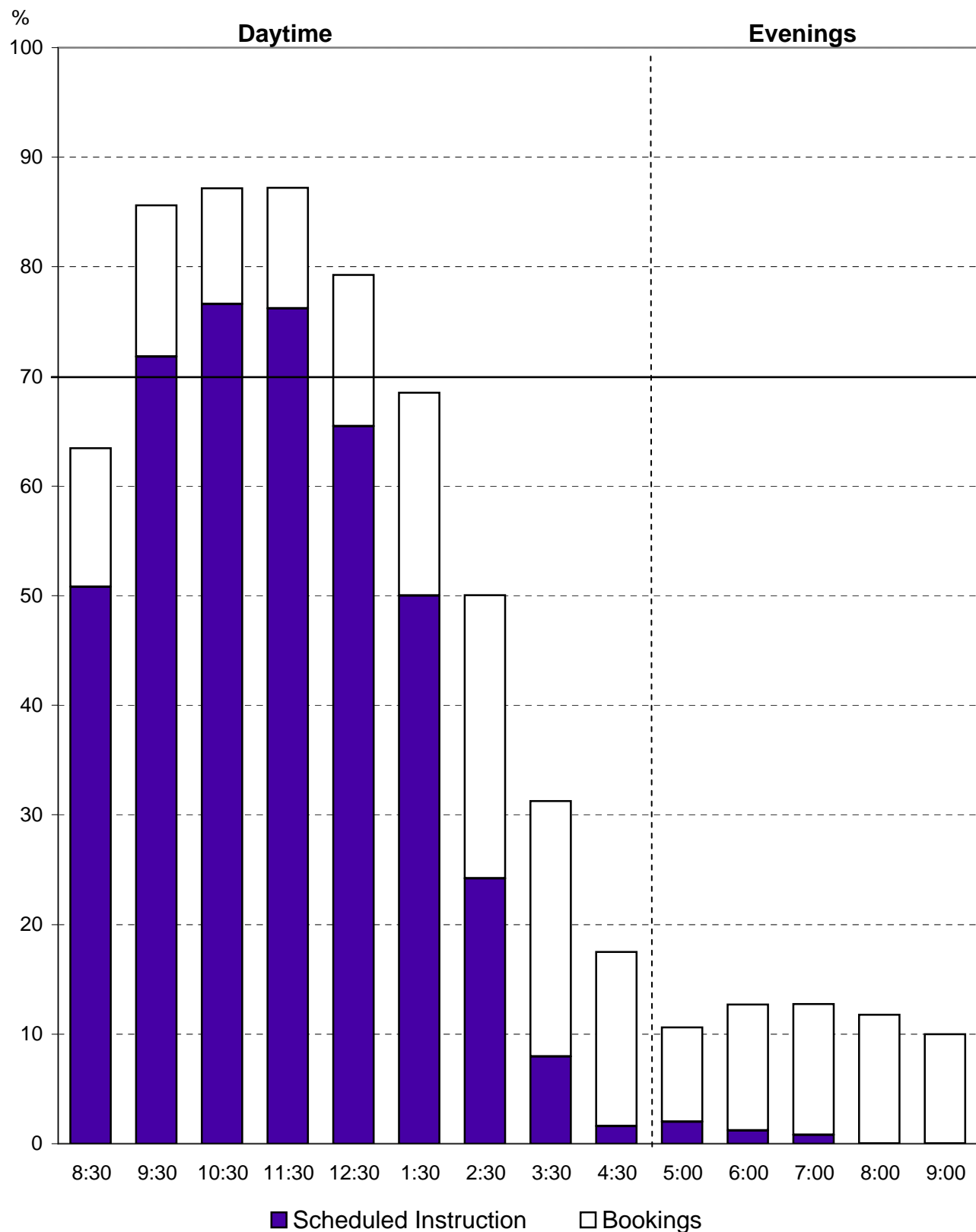


Chart 6
University of Victoria
Saturday Room Utilization by Starting Time

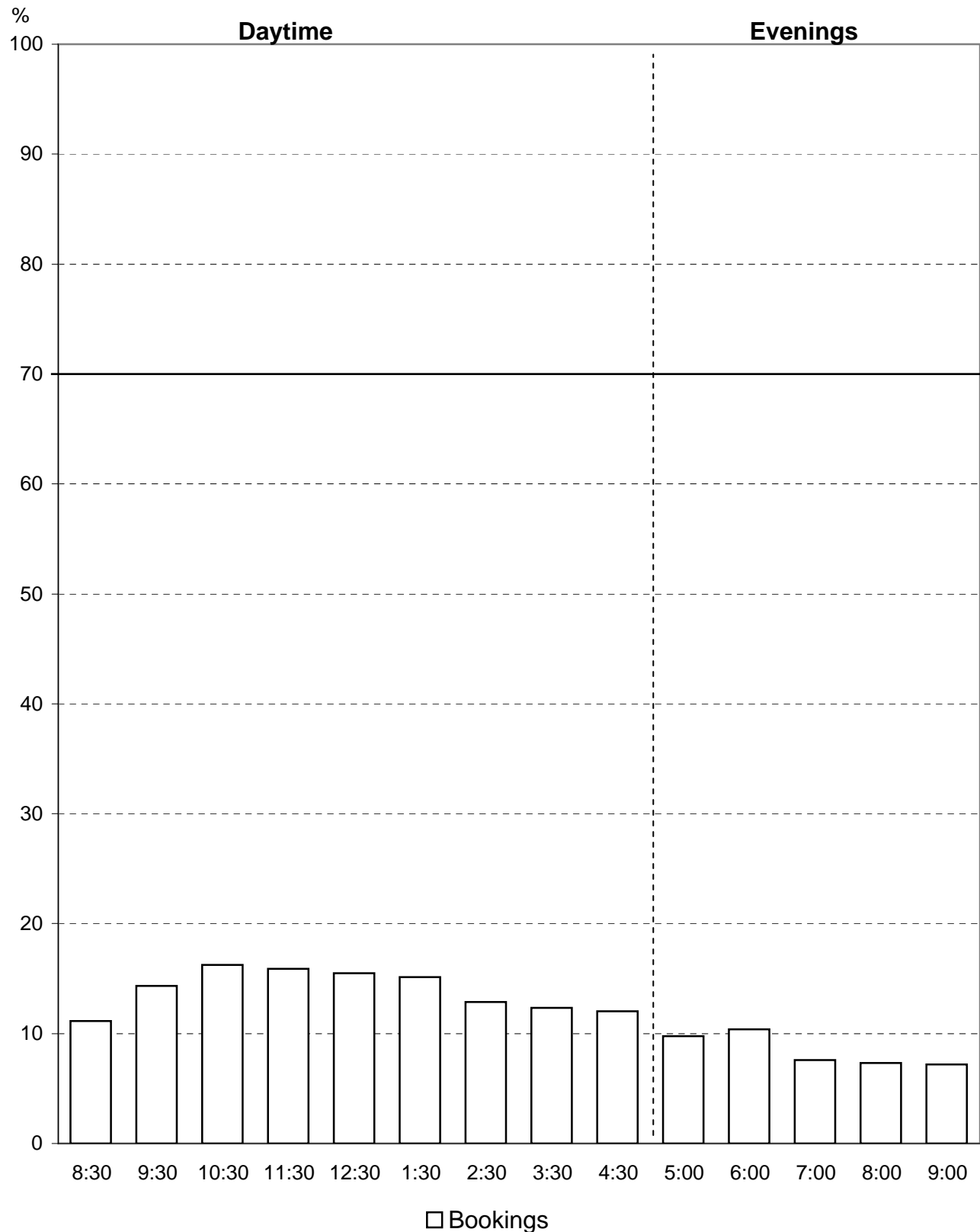


Chart 7
University of Victoria
Average Monday to Friday Room Utilization
by Starting Time

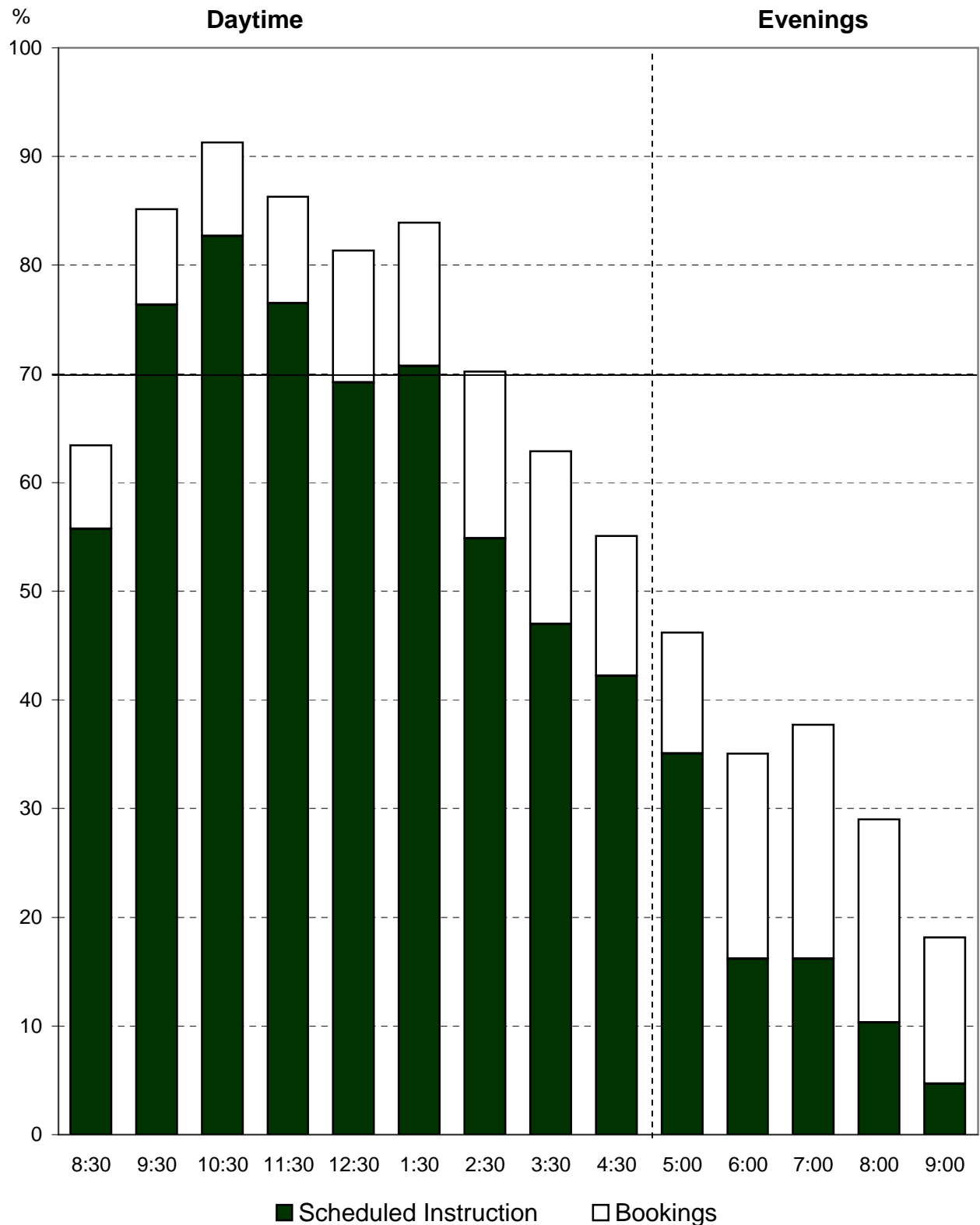


Chart 8 **University of Victoria** **Monday to Friday Seat Utilization**

for Scheduled Instruction by Starting Time

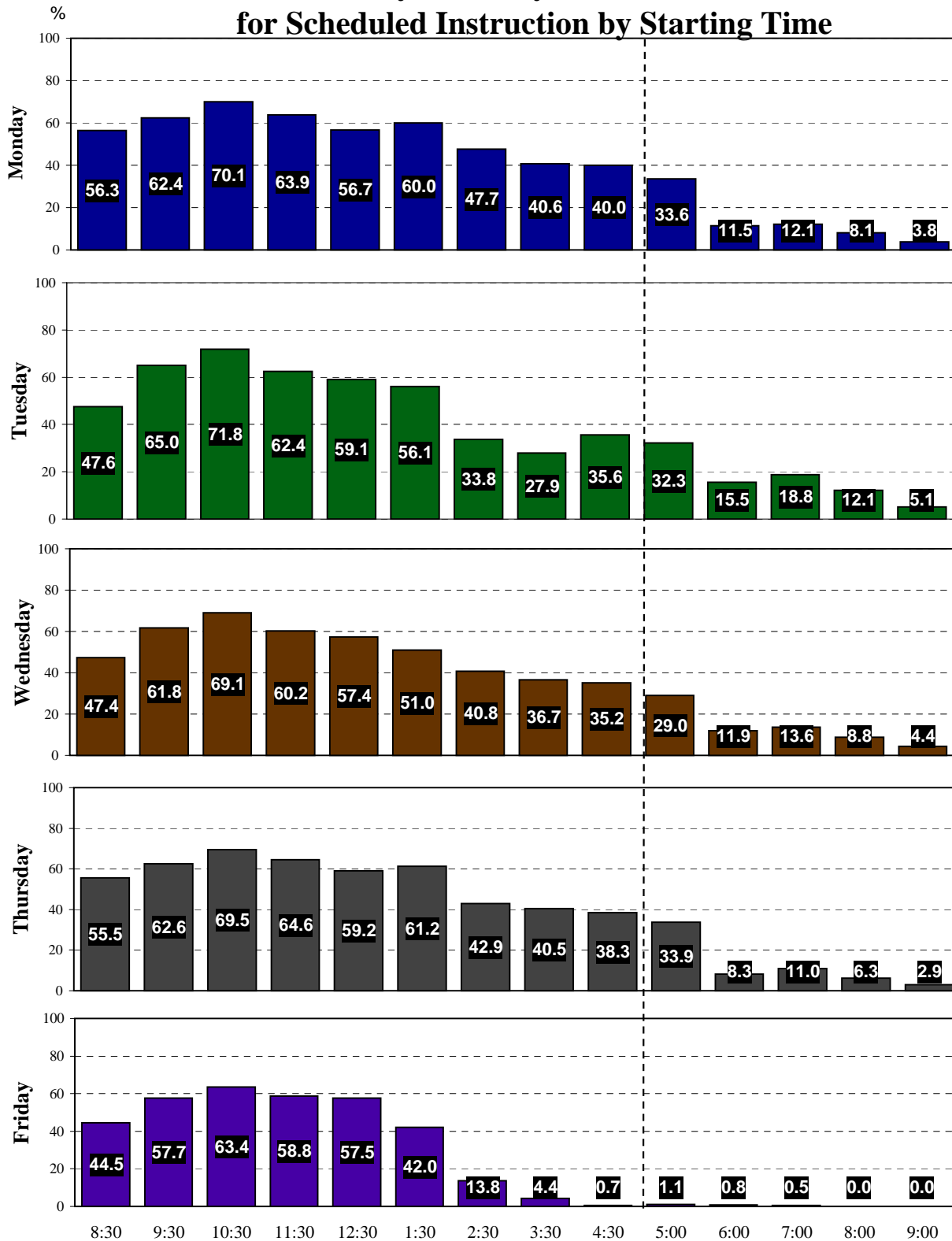


Chart 9
University of Victoria
Average Monday to Friday Seat Utilization
for Scheduled Instruction By Starting Time

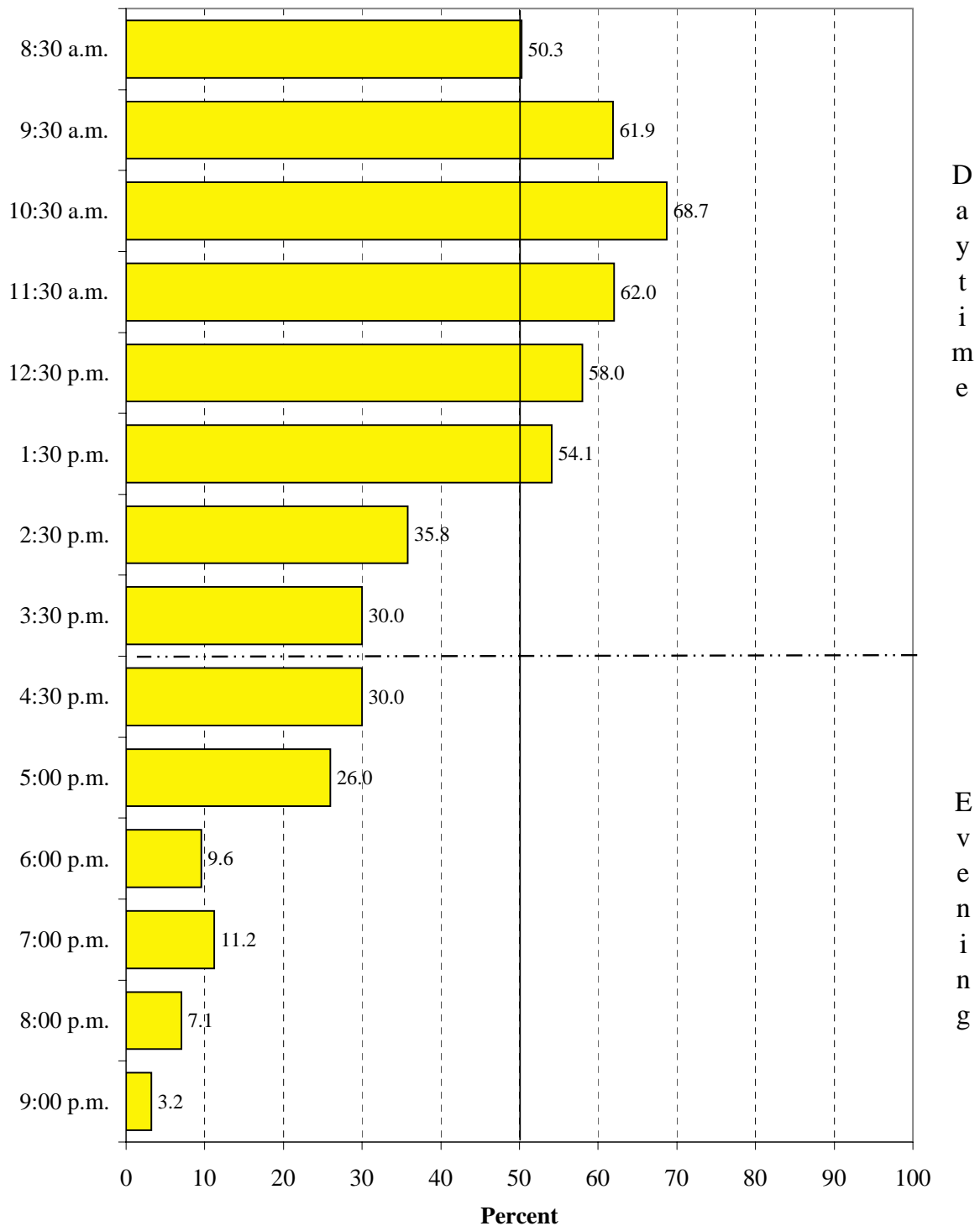


Table 1
2005/06 Monday to Friday Daytime Use by Seating Capacity

Seating Capacity	No. of Rooms	No. of Seats	Area in Sq. M.	Sq. M. per Seat	% Sched. Instr. Seat Use	% Sched. Instr. Seat Use	% Bookings Room Use	% Total Room Use
1-25	27	497	954	1.9	26.4	43.1	29.6	72.7
26-39	34	1,105	1,866	1.7	49.9	68.4	6.0	74.5
40-49	15	652	1,076	1.7	49.1	71.4	7.0	78.4
50-69	21	1,253	1,880	1.5	47.6	71.8	5.5	77.3
70-89	12	880	1,123	1.3	50.8	74.0	8.2	82.1
90-179	12	1,320	1,711	1.3	62.1	84.7	3.6	88.3
180-325	5	1,237	1,427	1.2	63.5	84.3	4.6	88.8
University Totals	126	6,944	10,035	1.4	52.6	66.6	11.4	78.0

Chart 10
University of Victoria
Average Monday to Friday Daytime Room Utilization
by Seating Capacity

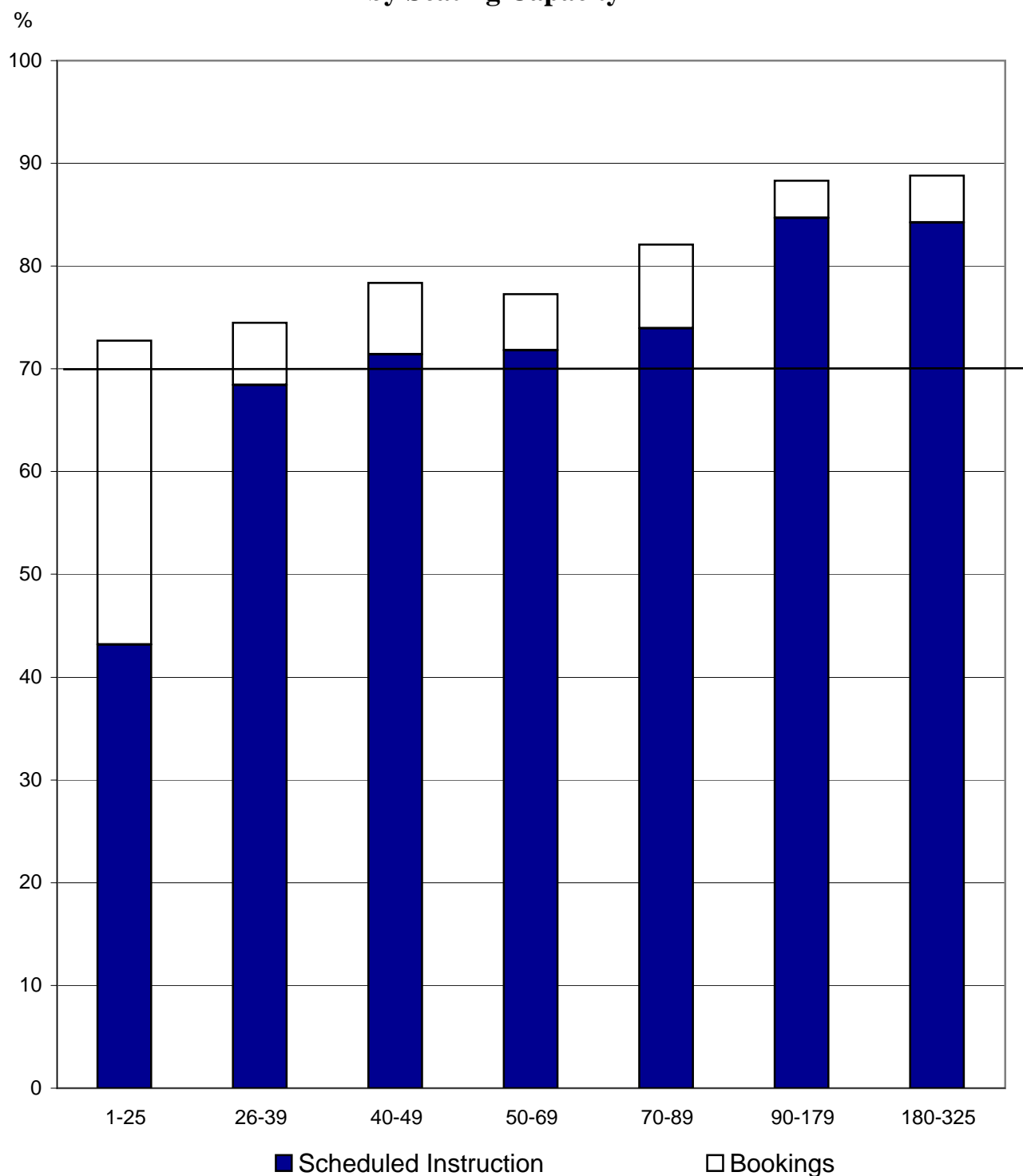


Chart 11
University of Victoria
Average Monday to Friday Evening Room Utilization by
Seating Capacity

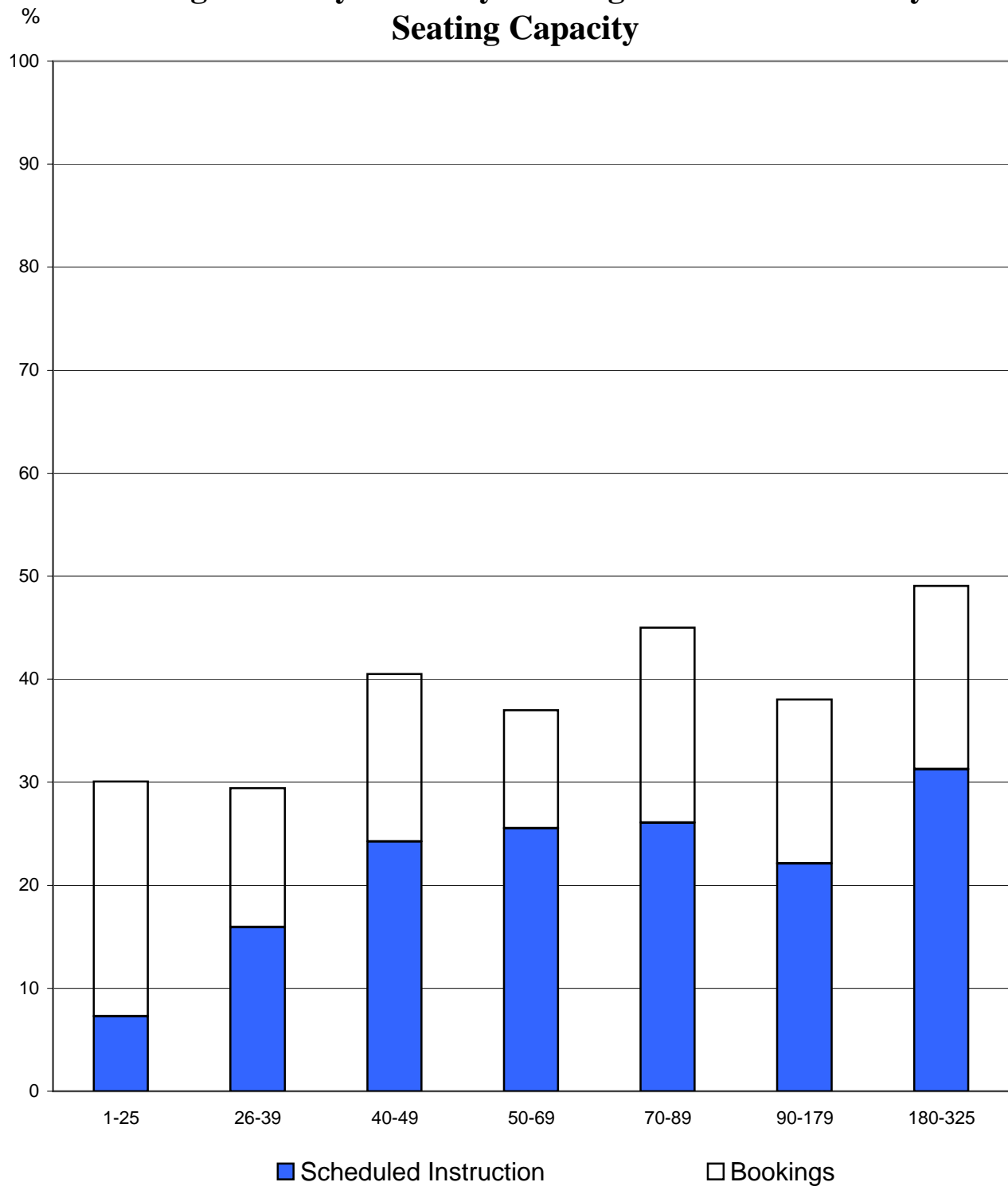


Chart 12
University of Victoria
Average Monday to Friday Seat Utilization
for Scheduled Instruction by Room Capacity

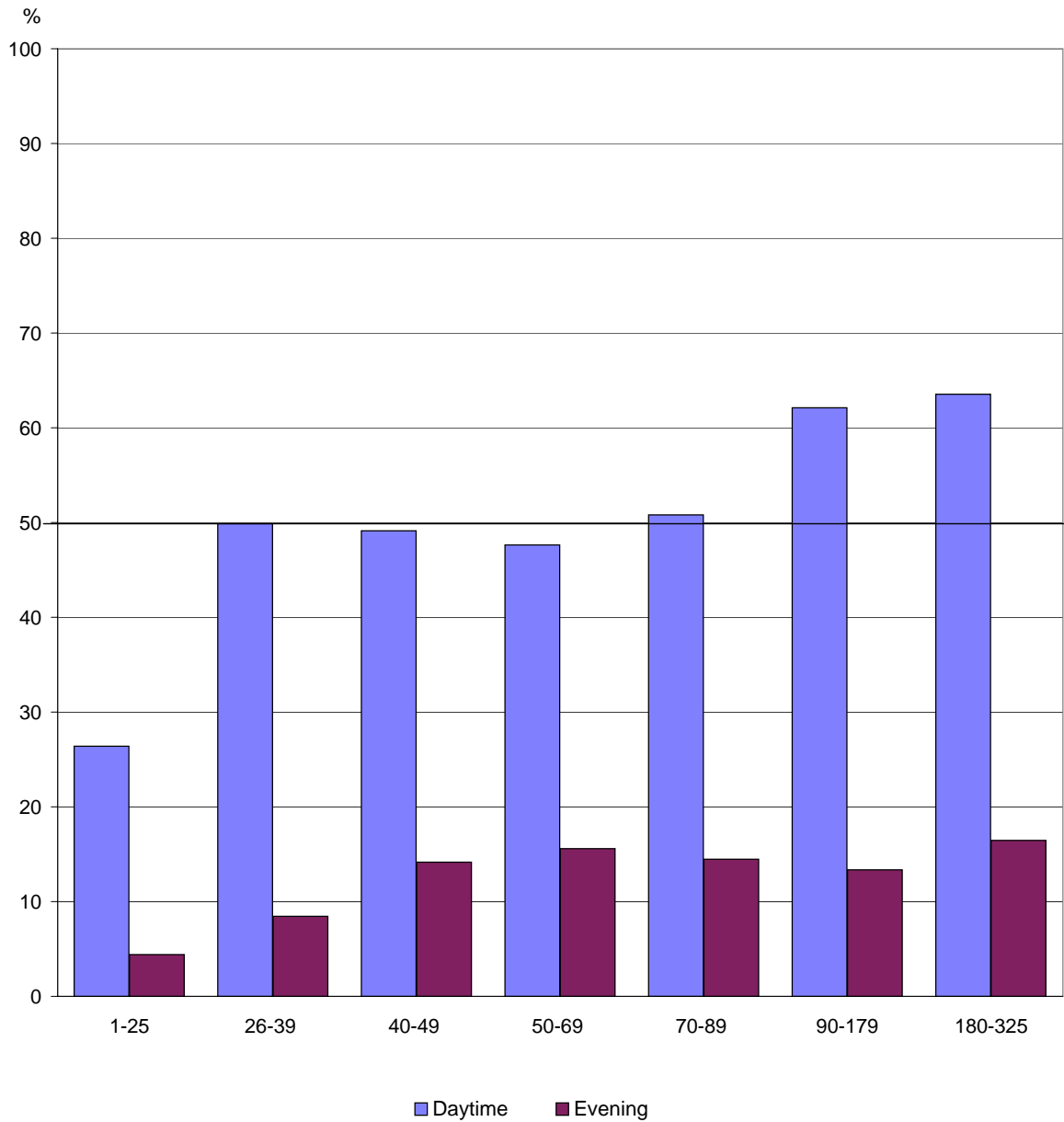


Table 2
2005/06 Monday to Friday Daytime Use by Building

Building	No. of Rooms	No. of Seats	Area in Sq. M.	Sq. M. per Seat	% Sched. Instr. Seat Use	% Sched. Instr. Room Use	% Bookings Room Use	% Total Room Use
H & SD (HSD)	3	208	295	1.4	59.1	81	4	84.7
Clearihue (CLE)	47	1,783	2,600	1.5	53.5	65	16	81.4
Hickman (HHB)	4	355	536	1.5	57.0	69	11	79.4
Cunningham (CUN)	1	58	77	1.3	33.8	68	10	77.8
Elliott (ELL)	8	681	881	1.3	52.0	72	6	77.4
Strong (DSB)	12	710	1,093	1.5	56.8	71	9	80.5
Cornett (COR)	19	1,146	1,508	1.3	57.0	73	10	82.7
Fine Arts (FIA)	3	103	180	1.7	51.3	64	10	73.9
McKinnon (McK)	2	145	198	1.4	36.8	63	9	71.1
Business & Economics (BEC)	1	30	68	2.3	32.9	65	15	80.5
MacLaurin (MAC)	19	1,135	1,599	1.4	52.0	65	7	72.0
Fraser (FRA)	7	590	1,000	1.7	40.3	48	7	54.9
University Totals	126	6,944	10,035	1.4	52.6	66.6	11.4	78.0

Chart 13
University of Victoria
Average Monday to Friday Daytime Room Utilization
by Building

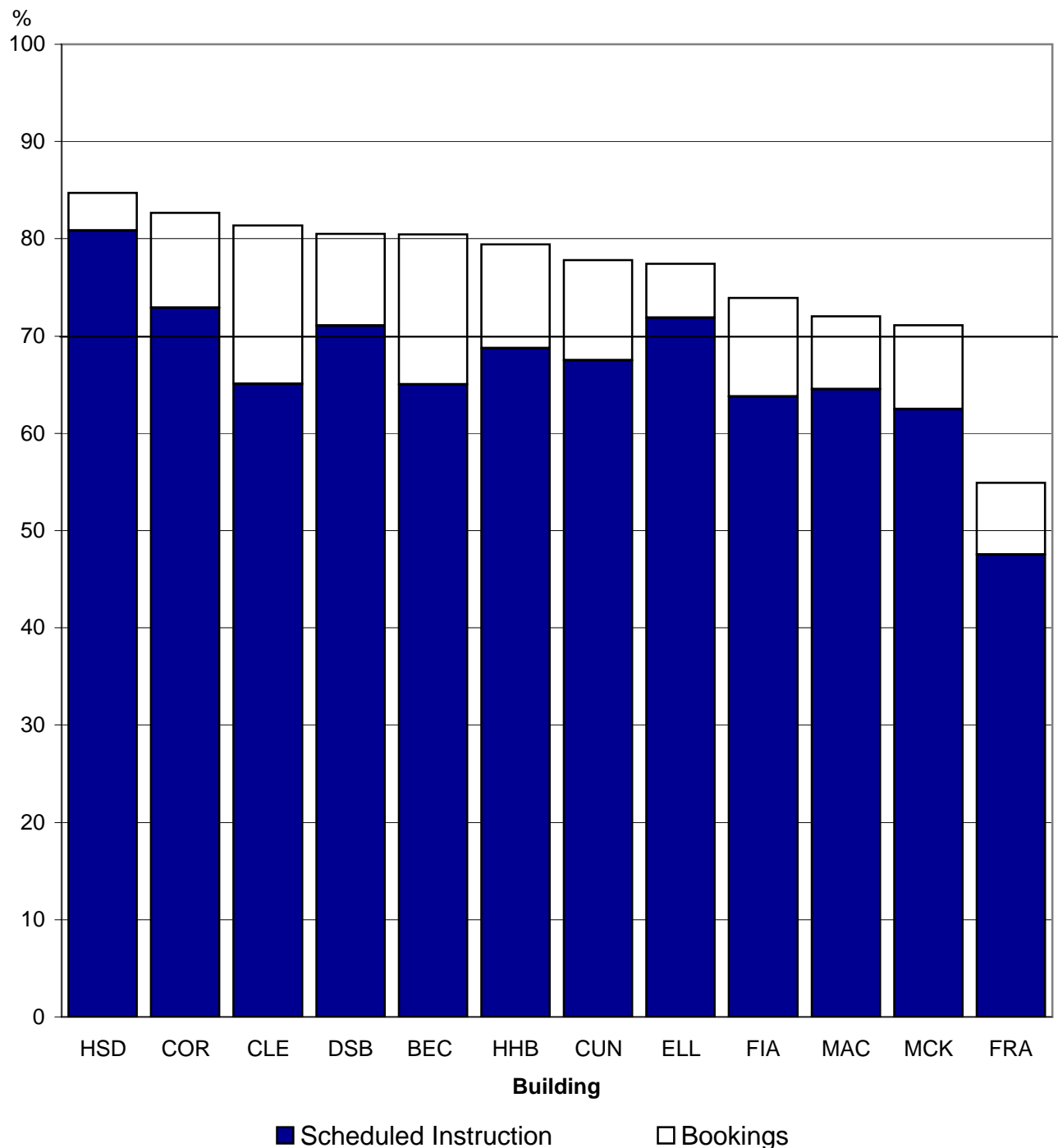


Chart 14
University of Victoria
Average Monday to Friday Evening Room Utilization
by Building

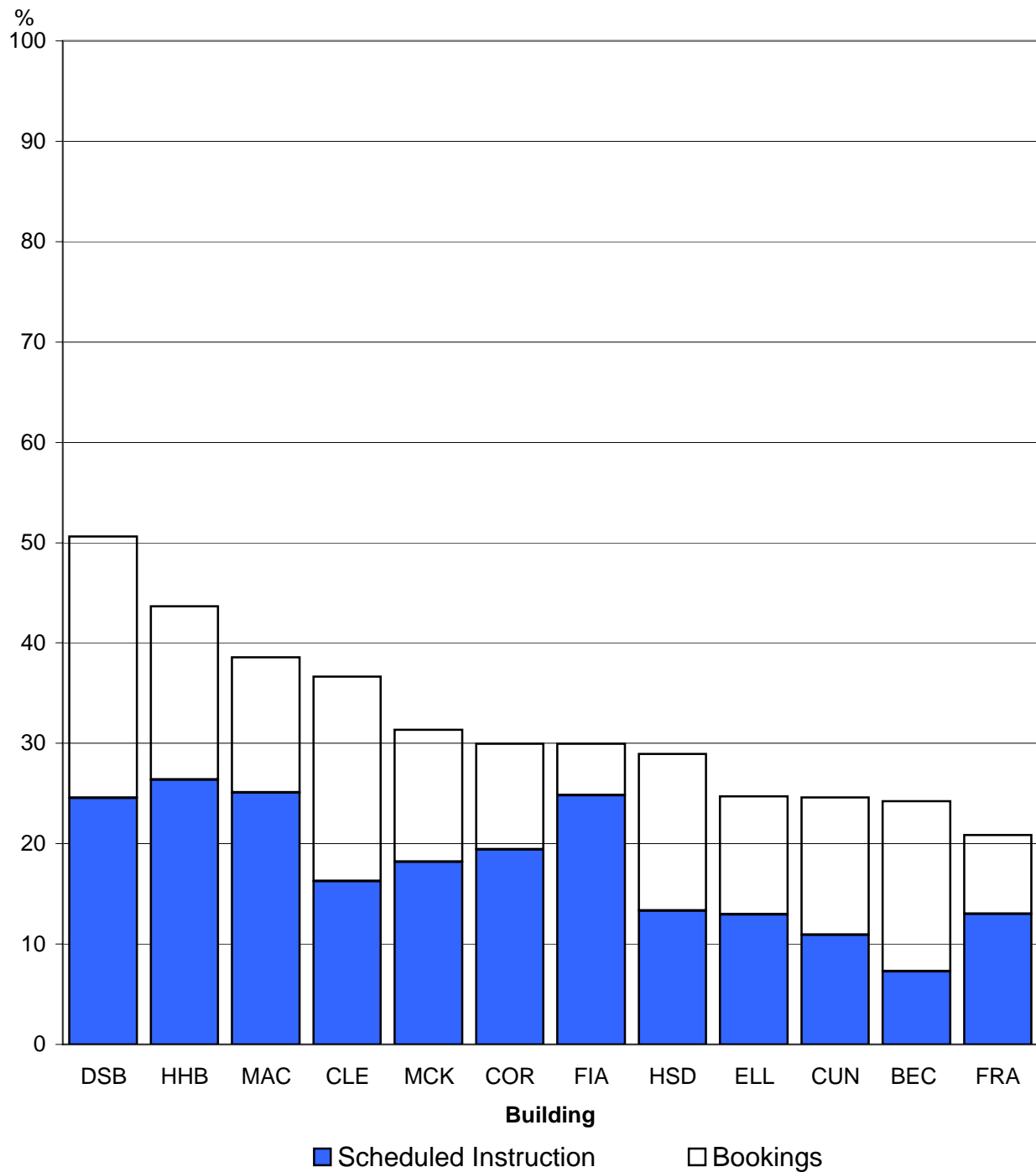


Chart 15
University of Victoria
Average Monday to Friday Seat Utilization
for Scheduled Instruction by Building

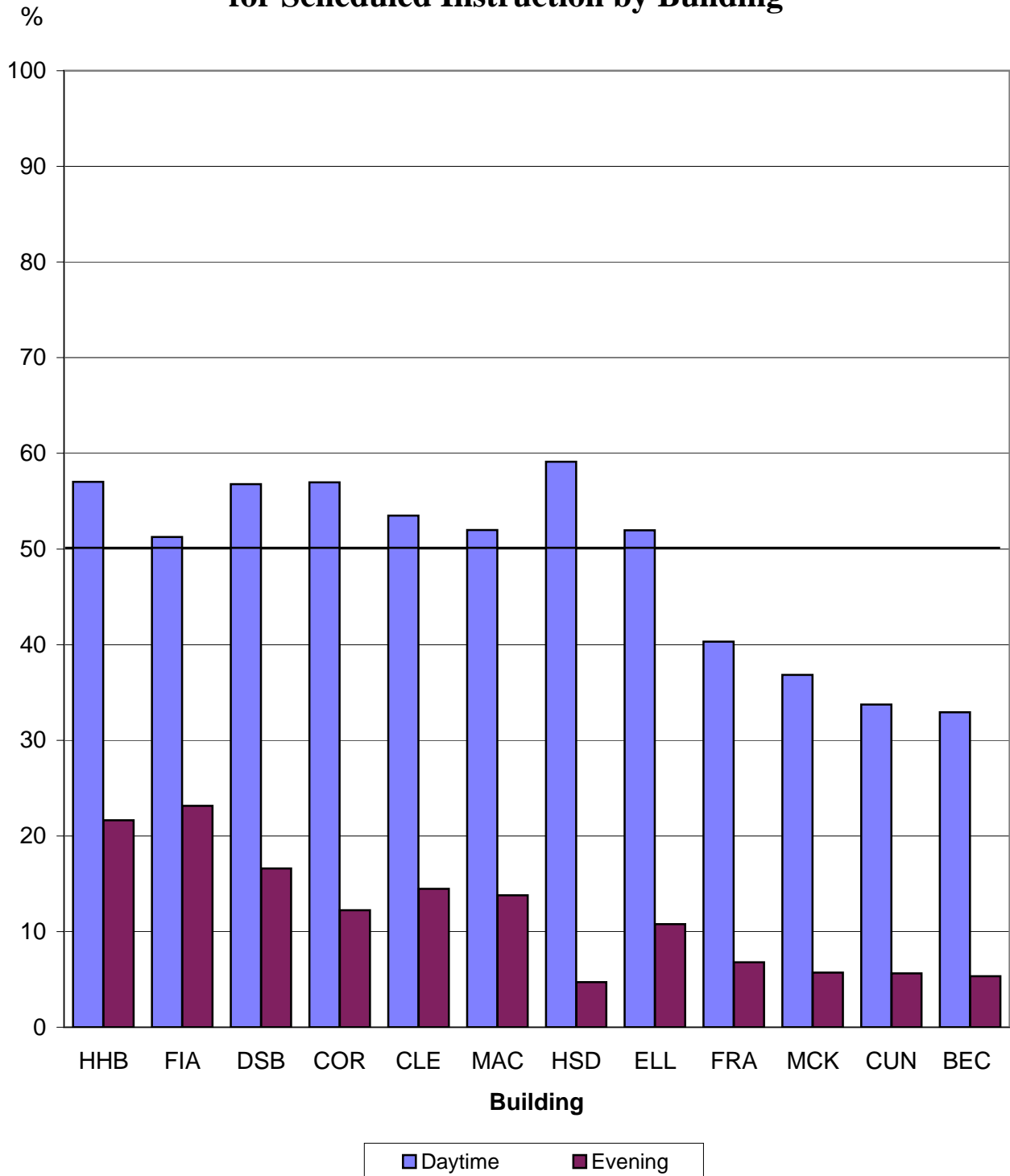


Table 3
Historical Monday to Friday Percentage Utilization Summary

Room Utilization

Day	91/92	92/93	93/94	94/95	95/96	96/97	97/98	01/02	02/03	04/05	05/06
Scheduled Instruction	70.9	66.9	64.5	63.1	67.4	67.6	62.7	59.5	60.6	62.0	66.6
Bookings	12.8	12.0	11.8	11.7	10.6	10.5	10.2	11.9	11.8	14.4	11.4
Total	83.7	78.9	76.3	74.8	78.0	78.1	72.9	71.4	72.4	76.5	78.0

Evening

Scheduled Instruction	18.9	17.4	18.5	18.9	19.0	17.4	15.0	11.9	15.3	16.1	18.8
Bookings	12.1	14.8	14.1	14.0	13.5	13.2	11.2	8.4	7.8	16.7	16.4
Total	31.0	32.2	32.6	32.9	32.5	30.6	26.2	20.3	23.1	32.8	35.2

Seat Utilization

(Scheduled Instruction)

Day	53.2	50.2	47.5	47.6	53.3	55.1	52.3	50.7	49.0	49.5	52.6
Evening	10.7	9.8	10.9	10.1	11.4	10.6	10.0	11.5	10.3	11.0	13.1

APPENDIX
2005/06 Classroom Inventory

Room Size Interval	Room	No. of Seats	Area in Sq. M.	Sq. M. per Seat	Sched. Instr % Day Use	Bookings % Day Use	Total % Day Use
Less than 26	CLEB346	12	24.3	2.03	27.5	24.5	52.0
	CLEC116	12	22.1	1.84	50.0	17.1	67.1
	CLEC118	12	22.1	1.84	50.0	9.3	59.3
	CORA372	12	37.7	3.14	32.5	15.6	48.1
	CLEB446	14	24.3	1.74	12.5	85.0	97.5
	CLED261	14	25.7	1.84	36.2	11.6	47.8
	CORA132	14	27.5	1.96	65.0	4.7	69.7
	CLEC214	16	26.5	1.66	55.0	16.7	71.7
	CLED123	18	32.4	1.80	0.0	100.0	100.0
	CLED127	18	31.2	1.73	0.0	100.0	100.0
	CLED129	18	31.6	1.76	0.0	100.0	100.0
	CLED133	18	32.2	1.79	0.0	100.0	100.0
	MACD117	18	31.2	1.73	31.2	2.9	34.1
	CLEB215	20	37.6	1.88	57.5	18.3	75.8
	CLEB315	20	39.1	1.96	35.0	27.3	62.3
	CLEB415	20	37.4	1.87	75.0	6.2	81.2
	CLEC316	20	37.5	1.88	68.7	7.7	76.4
	CORA339	20	33.5	1.68	30.0	56.2	86.2
	CORB130	20	37.3	1.87	40.0	20.7	60.7
	DSBC114	20	44.9	2.25	50.0	12.1	62.1
	DSBC124	20	44.9	2.25	40.0	21.6	61.6
	FIA209	20	44.0	2.20	52.5	14.1	66.6
	CLED128	24	40.8	1.70	70.0	2.5	72.5
	CLED130	24	34.8	1.45	70.0	10.8	80.8
	ELL161	24	41.9	1.75	82.5	1.7	84.2
	HSDA250	24	52.3	2.18	76.2	2.2	78.4
	HHB120	25	58.7	2.35	57.5	9.6	67.1
	27	497	953.5	1.92	43.1	29.6	72.7
26 to 39	FRA204	27	67.8	2.51	35.0	4.6	39.6
	FRA205	27	67.7	2.51	20.0	4.3	24.3
	MACD107	27	36.7	1.36	41.2	8.3	49.5
	CLEC111	28	35.7	1.28	80.0	4.2	84.2
	CLEC113	28	38.4	1.37	85.0	0.0	85.0
	MACD105	28	42.5	1.52	60.0	7.4	67.4
	BEC363	30	68.2	2.27	65.0	15.4	80.4
	CLEC115	30	54.8	1.83	52.5	10.2	62.7
	CLED124	30	41.1	1.37	55.0	12.6	67.6
	HSDA264	30	60.4	2.01	76.2	5.6	81.8
	MACA166	30	66.7	2.22	56.2	7.7	63.9
	MACA541	30	52.1	1.74	60.0	5.0	65.0
	MACD109	30	37.7	1.26	73.7	7.3	81.0
	CLEA304	32	48.1	1.50	87.5	1.2	88.7
	CLEB020	32	43.8	1.37	65.0	0.2	65.2
	CLEC108	32	57.1	1.78	82.5	3.2	85.7
	CORA128	32	41.4	1.29	65.0	14.1	79.1
	FRA142	32	80.8	2.53	47.5	6.0	53.5
	CLED134	33	40.5	1.23	50.0	15.9	65.9
	FIA104	33	59.5	1.80	66.2	10.0	76.2
	CLEA118	34	55.7	1.64	95.0	0.7	95.7
	CLED126	35	58.7	1.68	75.0	2.8	77.8

APPENDIX
2005/06 Classroom Inventory

Room Size Interval	Room	No. of Seats	Area in Sq. M.	Sq. M. per Seat	Sched. Instr % Day Use	Bookings % Day Use	Total % Day Use
	CLED131	35	50.2	1.43	80.0	3.5	83.5
	CLED132	35	58.8	1.68	67.5	1.3	68.8
	DSBC126	35	68.0	1.94	85.0	1.1	86.1
	DSBC128	35	67.3	1.92	77.5	3.6	81.1
	DSBC130	35	67.7	1.93	82.5	1.1	83.6
	MACD115	35	47.8	1.37	62.5	13.9	76.4
	CORB145	37	76.4	2.06	82.5	1.0	83.5
	CLEA211	37	51.6	1.39	85.0	0.9	85.9
	CLEC109	37	53.4	1.44	77.5	6.5	84.0
	CLEA203	38	60.0	1.58	95.0	1.6	96.6
	CLEA204	38	48.0	1.26	85.0	9.9	94.9
	MCK155	38	61.0	1.61	52.5	12.9	65.4
	34	1,105	1,865.6	1.69	68.4	6.0	74.4
40 to 49	DSBC113	40	88.0	2.20	60.0	15.7	75.7
	HHB116	40	116.6	2.92	78.7	13.3	92.0
	MACD283	40	57.8	1.45	72.5	7.8	80.3
	MACD287	40	91.0	2.28	51.2	14.7	65.9
	CLEC110	42	57.8	1.38	70.0	7.4	77.4
	CLED125	42	50.2	1.20	77.5	2.8	80.3
	CLED267	42	31.2	0.74	70.0	2.2	72.2
	CLEA306	44	64.1	1.46	92.5	1.1	93.6
	DSBC108	45	70.5	1.57	65.0	12.6	77.6
	MACA168	45	75.9	1.69	47.5	6.2	53.7
	MACD101	45	84.4	1.88	80.0	1.4	81.4
	MACD103	45	84.4	1.88	66.2	8.1	74.3
	MACD114	45	56.0	1.24	77.5	3.9	81.4
	CLEA206	48	64.1	1.34	95.0	1.7	96.7
	CORA148	49	84.2	1.72	67.5	4.5	72.0
	15	652	1,076.2	1.65	71.4	6.9	78.3
50 to 69	CORB111	50	73.1	1.46	83.7	4.4	88.1
	FIA103	50	76.6	1.53	72.5	6.2	78.7
	MACD111	50	97.4	1.95	80.0	3.5	83.5
	ELL162	54	72.0	1.33	70.0	5.3	75.3
	FRA157	54	135.8	2.51	60.0	5.8	65.8
	CLEA215	58	77.9	1.34	75.0	2.8	77.8
	CUN146	58	76.6	1.32	67.5	10.3	77.8
	CORA129	59	79.6	1.35	87.5	0.0	87.5
	ELL160	59	67.4	1.14	72.5	7.1	79.6
	CORB107	60	67.2	1.12	70.0	12.3	82.3
	DSBC112	60	93.8	1.56	76.2	9.9	86.1
	FRA152	60	134.9	2.25	47.5	7.6	55.1
	MACA169	60	82.0	1.37	55.0	10.4	65.4
	CLEA301	62	74.7	1.20	90.0	0.1	90.1
	CORA229	62	79.6	1.28	87.5	0.6	88.1
	CLEA309	63	88.4	1.40	82.5	5.4	87.9
	CLEA303	64	73.4	1.15	75.0	5.9	80.9

APPENDIX
2005/06 Classroom Inventory

Room Size Interval	Room	No. of Seats	Area in Sq. M.	Sq. M. per Seat	Sched. Instr % Day Use	Bookings % Day Use	Total % Day Use
	FRA158	65	168.9	2.60	55.0	16.3	71.3
	ELL060	68	86.7	1.28	42.5	13.8	56.3
	ELL061	68	86.1	1.27	62.5	9.6	72.1
	CLEA201	69	87.5	1.27	85.0	5.3	90.3
	21	1,253	1,879.6	1.50	71.3	6.8	78.1
70 to 89	CORA125	70	82.9	1.18	72.5	9.5	82.0
	CORA225	70	82.9	1.18	60.0	20.9	80.9
	MACD110	70	86.8	1.24	70.0	10.0	80.0
	MACD116	70	86.3	1.23	70.0	10.3	80.3
	DSBC116	73	128.7	1.76	62.5	18.0	80.5
	DSBC122	73	128.8	1.76	83.7	4.8	88.5
	CLEA307	74	88.0	1.19	85.0	7.7	92.7
	CLEA311	74	89.8	1.21	85.0	4.1	89.1
	DSBC118	74	88.0	1.19	85.0	8.2	93.2
	HHB110	75	52.7	0.70	48.7	15.1	63.8
	CLEC112	77	115.7	1.50	87.5	0.2	87.7
	ELL062	80	91.9	1.15	77.5	5.4	82.9
	12	880	1,122.5	1.28	74.0	9.5	83.5
90 to 179	CORA121	90	109.1	1.21	97.5	3.0	100.5
	CLEA207	92	129.7	1.41	80.0	6.7	86.7
	CORA120	94	103.0	1.10	90.0	3.4	93.4
	CORA221	95	109.1	1.15	81.2	2.0	83.2
	CORB143	96	117.1	1.22	87.5	7.2	94.7
	MCK150	107	137.2	1.28	72.5	4.3	76.8
	CORB108	108	133.4	1.24	85.0	5.0	90.0
	CORB112	108	132.8	1.23	90.0	0.2	90.2
	MACD288	110	147.4	1.34	77.5	5.4	82.9
	CLEA127	118	212.1	1.80	82.5	0.9	83.4
	ELL167	148	198.1	1.34	82.5	1.1	83.6
	HSDA240	154	182.1	1.18	90.0	3.7	93.7
	12	1,320	1,711.1	1.30	84.7	3.6	88.3
180 to 325	ELL168	180	237.1	1.32	85.0	0.3	85.3
	DSBC103	200	202.6	1.01	85.0	4.3	89.3
	HHB105	215	308.4	1.43	90.0	4.4	94.4
	MACA144	317	334.5	1.06	93.7	6.9	100.6
	FRA159	325	344.0	1.06	67.5	6.7	74.2
	5	1,237	1,426.6	1.15	84.2	4.5	88.8
Totals	126	6,944.0	10,035.1	1.45	66.5	11.3	77.9