

# University of Victoria

## *CLASSROOM UTILIZATION*

### *2002/03*



**University of Victoria**  
Institutional Planning and Analysis

# **University of Victoria Classroom Utilization Report 2002/03**

Prepared by: Alan R. Wilson  
Ciel McGuire

Office of Institutional Planning & Analysis  
<http://www.inst.uvic.ca>

November 22, 2002

# **Classroom Utilization**

## **2002/03**

### ***Table of Contents***

Introduction

<b>Chart</b>	<b>1</b>	—	Monday Room Utilization by Starting Time
<b>Chart</b>	<b>2</b>	—	Tuesday Room Utilization by Starting Time
<b>Chart</b>	<b>3</b>	—	Wednesday Room Utilization by Starting Time
<b>Chart</b>	<b>4</b>	—	Thursday Room Utilization by Starting Time
<b>Chart</b>	<b>5</b>	—	Friday Room Utilization by Starting Time
<b>Chart</b>	<b>6</b>	—	Saturday Room Utilization by Starting Time
<b>Chart</b>	<b>7</b>	—	Average Monday to Friday Room Utilization by Starting Time
<b>Chart</b>	<b>8</b>	—	Monday to Friday Seat Utilization for Scheduled Instruction by Starting Time
<b>Chart</b>	<b>9</b>	—	Average Monday to Friday Seat Utilization for Scheduled Instruction by Starting Time
<b>Table</b>	<b>1</b>	—	Monday to Friday Daytime Use by Seating Capacity
<b>Chart</b>	<b>10</b>	—	Average Monday to Friday Daytime Room Utilization by Seating Capacity
<b>Chart</b>	<b>11</b>	—	Average Monday to Friday Evening Room Utilization by Seating Capacity
<b>Chart</b>	<b>12</b>	—	Average Monday to Friday Seat Utilization for Scheduled Instruction by Room Capacity
<b>Table</b>	<b>2</b>	—	Monday to Friday Daytime Use by Building
<b>Chart</b>	<b>13</b>	—	Average Monday to Friday Daytime Room Utilization by Building
<b>Chart</b>	<b>14</b>	—	Average Monday to Friday Evening Room Utilization by Building
<b>Chart</b>	<b>15</b>	—	Average Monday to Friday Seat Utilization for Scheduled Instruction by Building
<b>Table</b>	<b>3</b>	—	Historical Monday to Friday Percentage Utilization Summary
<b>APPENDIX</b>		—	2002/03 Classroom Inventory

## **Introduction**

### **Classroom Utilization 2002/03**

#### ***Methodology***

This report displays the level of classroom use as of October 2002. Two components are identified: scheduled instruction and bookings. Scheduled instruction consists of regular classroom instruction and includes lectures, tutorials, some discussion groups, and labs offered in classrooms. Bookings consist of more casual classroom use, such as staff and department meetings, club usage, and conferences. No bookings are included with scheduled instruction data. However, some usage included with the bookings is actually composed of tutorials and other sections associated with regular courses. This activity can appear here due to limitations in the university course database, which cannot handle courses that meet in one room for a part of a term and then move, in that term, to another room. The system also cannot handle some short-term immersion-type courses that meet throughout the day.

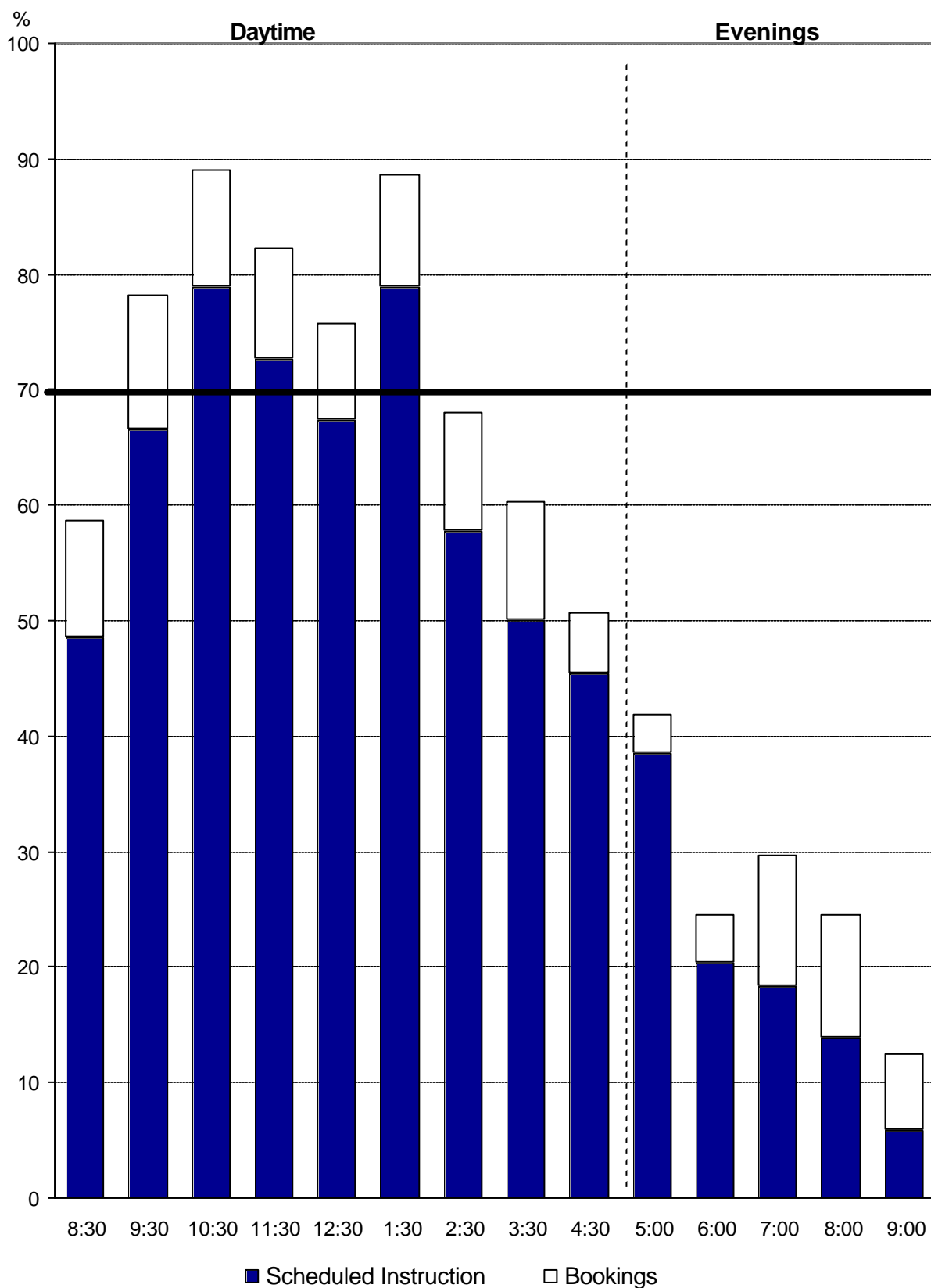
Room use is divided into two time periods: daytime (8:30 a.m. – 4:30 p.m.) and evening (4:30 p.m. – 10:00 p.m.). Note that a room in use from 5:30 p.m. – 6:30 p.m. will fill the 5:30 – 6:00 time slot and half the 6:00 – 7:00 time slot. A 70% daytime room use rate is considered by many as a reasonable target. Hence a line at 70% appears on all charts that tabulate room usage. For seat use, 50% is considered a reasonable target. Hence a line at 50% appears on all charts that tabulate seat usage. Note, however, that seat usage for bookings data is not maintained. This means that all seat-use results will be for scheduled instruction only.

#### ***Results***

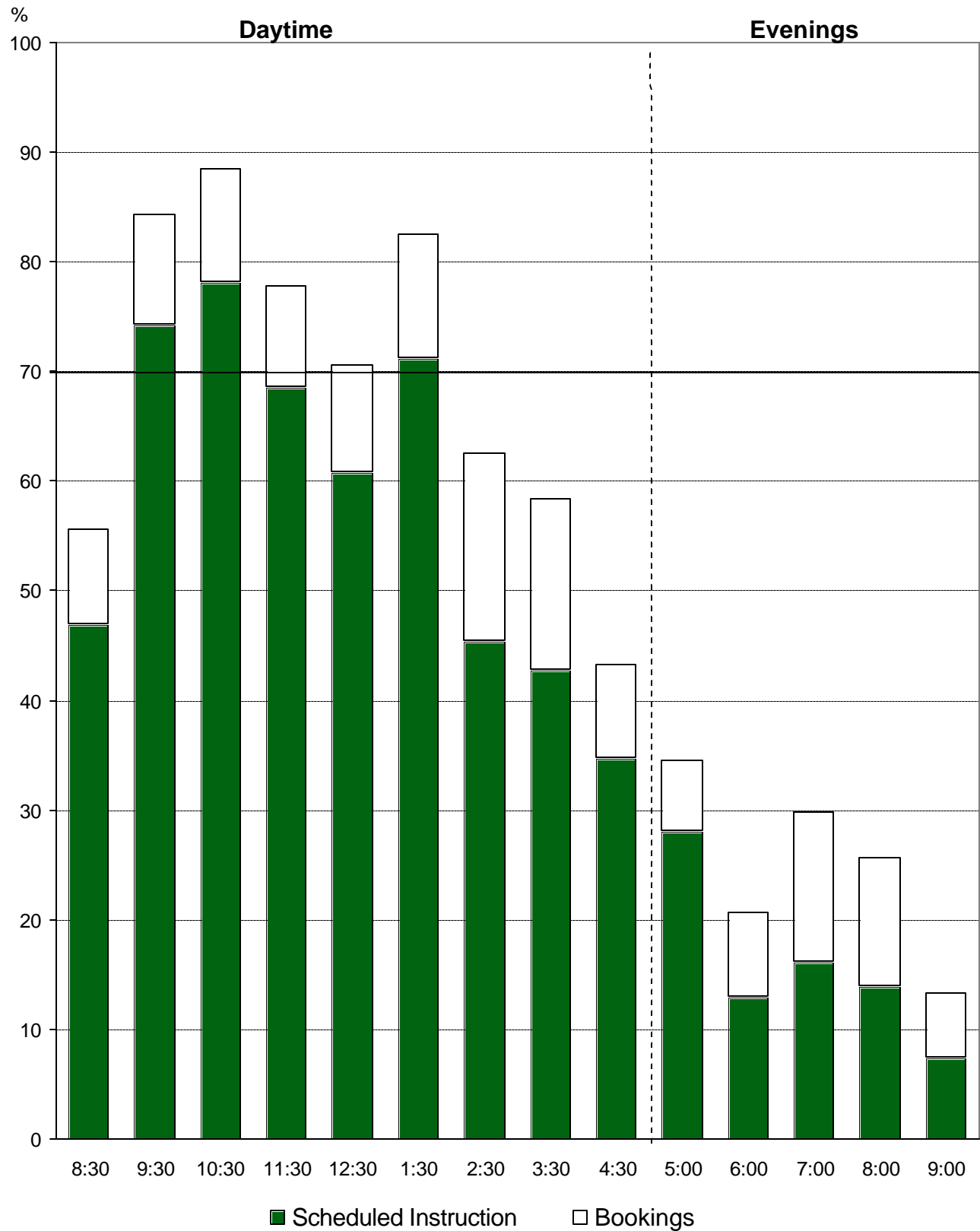
Charts 1 – 6 give daily room utilization for both scheduled instruction and bookings. Thursday is the busiest day of the week, with room use at more than 50% from 8:30 a.m. until 5:00 p.m. From 10:30 a.m. to 11:30 a.m., over 90% of the rooms are in use. As always, room usage drops noticeably on Friday, particularly after 2:30 p.m. Charts 8 and 9 detail seat use for scheduled instruction and show a similar pattern to room usage.

Tables 1 and Charts 10 – 12 examine utilization by room-size category. Larger rooms are, on the whole, used more frequently than smaller ones. Table 2 and Charts 13 – 15 examine utilization by building. The most heavily used buildings are H&SD, Clearihue, and Cunningham, with over 75% daytime usage. The least-used classrooms continue to be in the Fraser building, although daytime room usage there has increased to 57.5% from 49.2% in October 2001. Table 3 summarizes historical classroom use. Although current room usage is lower than in the 1990s, current seat usage for scheduled instruction is about the same, due, in part, to the greater average capacity of the classrooms. The appendix details use by individual classroom.

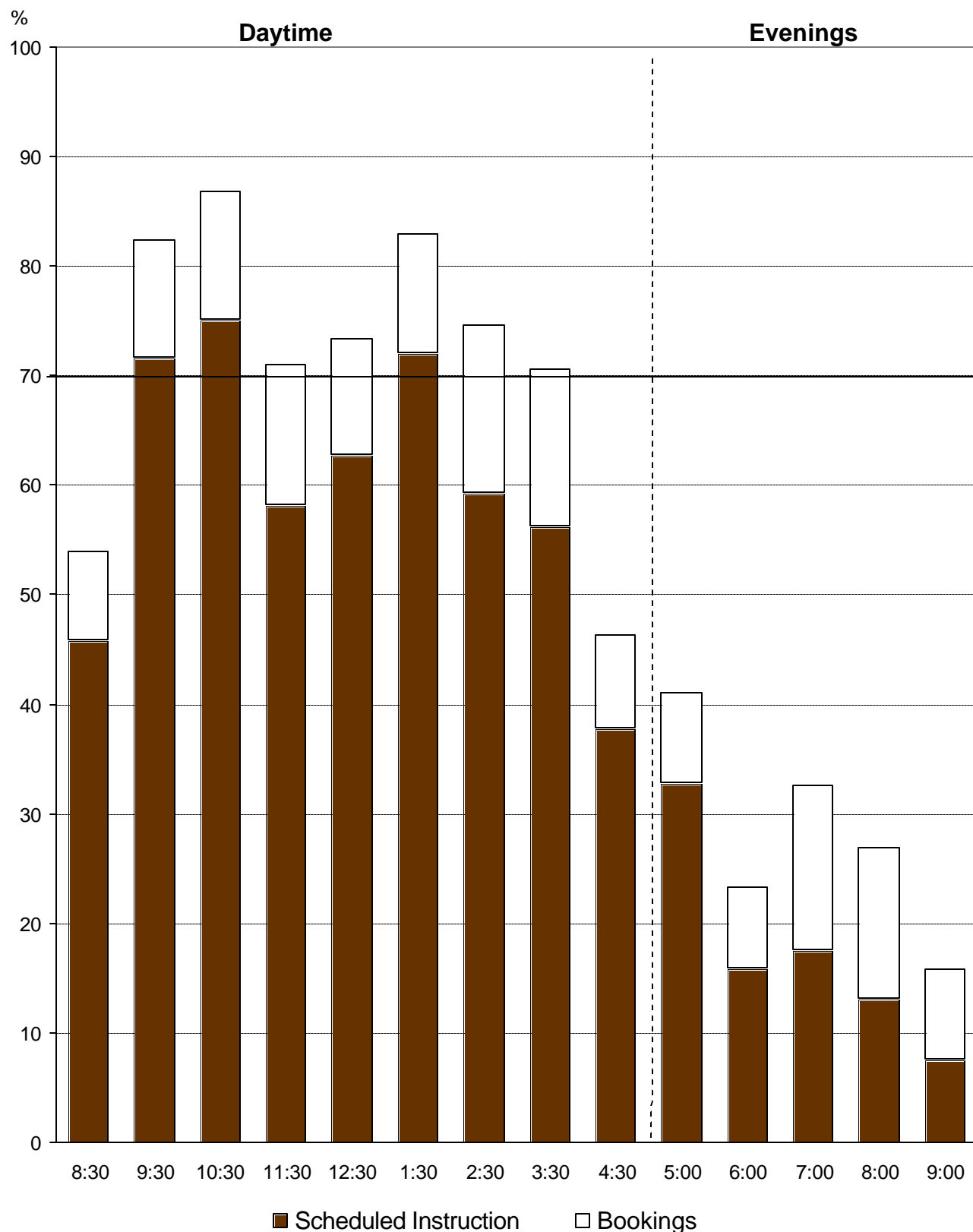
**Chart 1**  
**University of Victoria**  
**Monday Room Utilization by Starting Time**



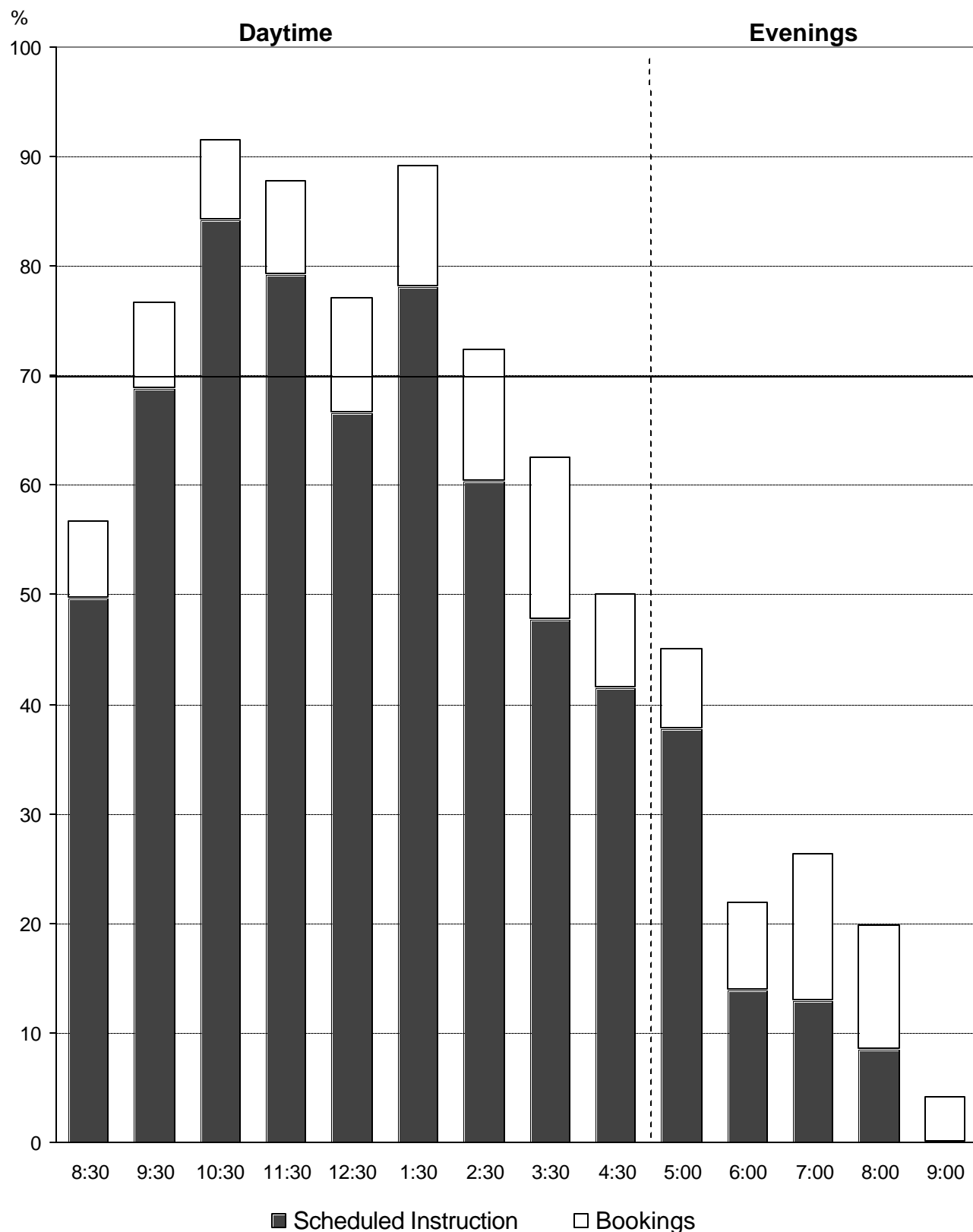
**Chart 2**  
**University of Victoria**  
**Tuesday Room Utilization by Starting Time**



**Chart 3**  
**University of Victoria**  
**Wednesday Room Utilization by Starting Time**

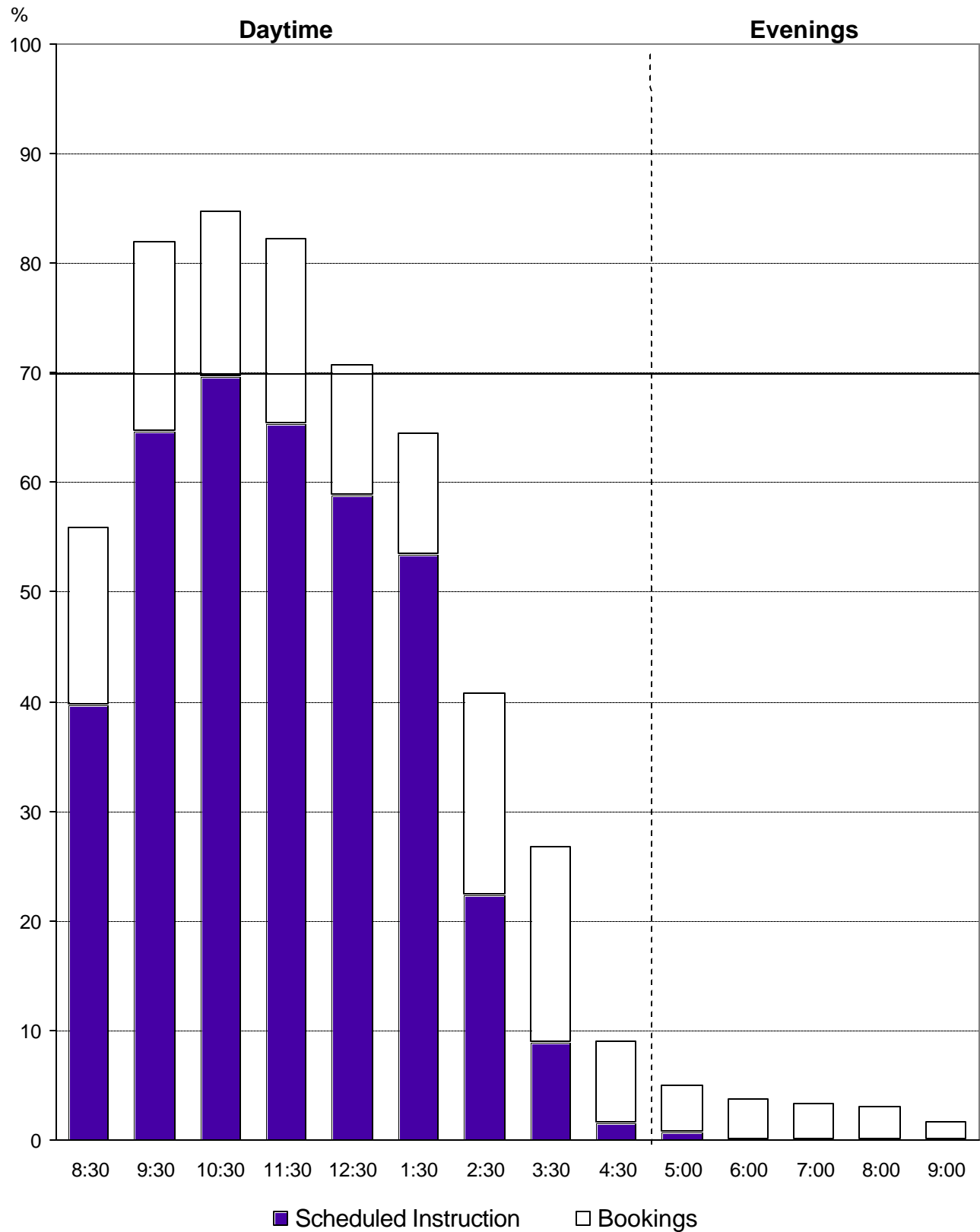


**Chart 4**  
**University of Victoria**  
**Thursday Room Utilization by Starting Time**

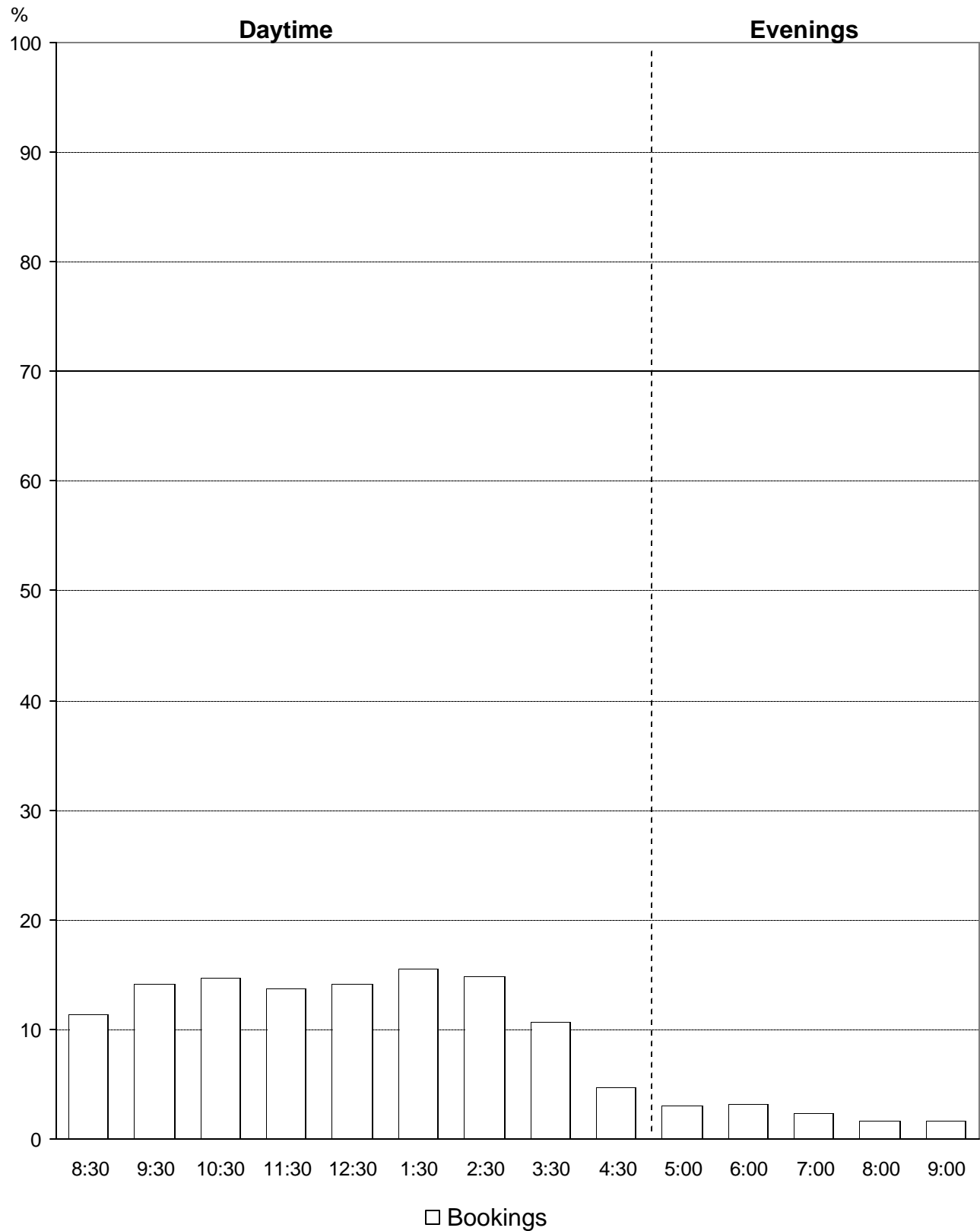




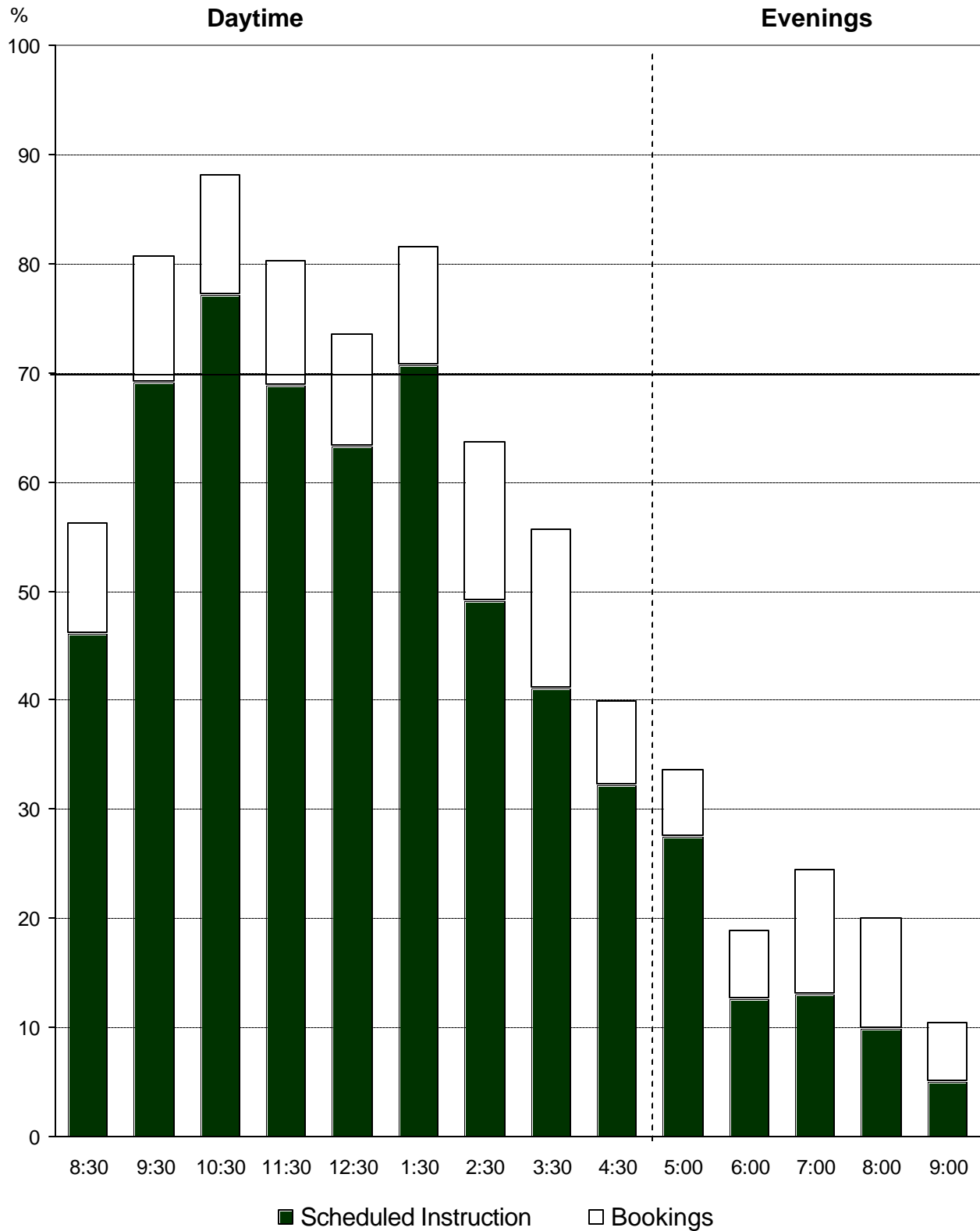
**Chart 5**  
**University of Victoria**  
**Friday Room Utilization by Starting Time**



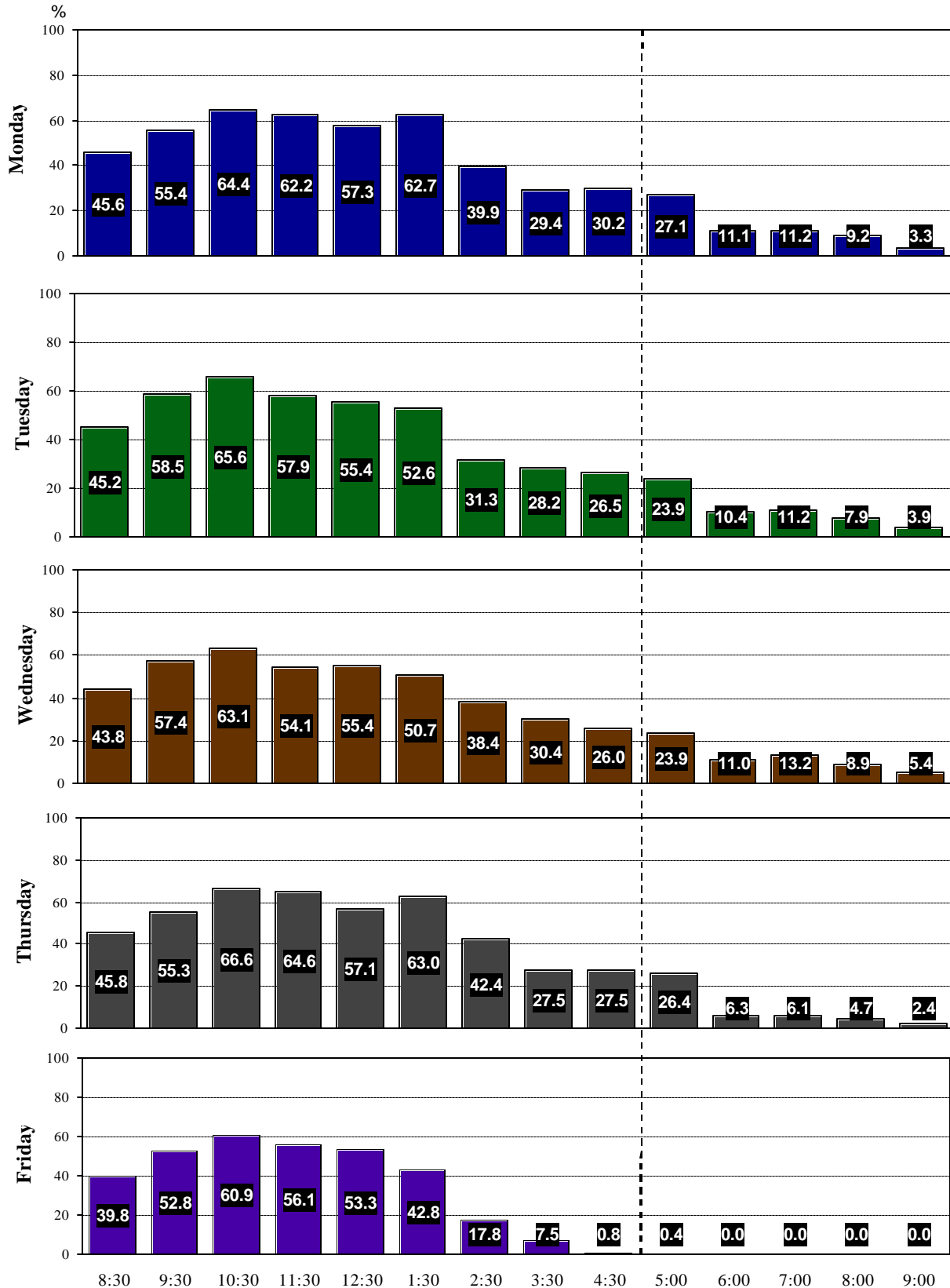
**Chart 6**  
**University of Victoria**  
**Saturday Room Utilization by Starting Time**



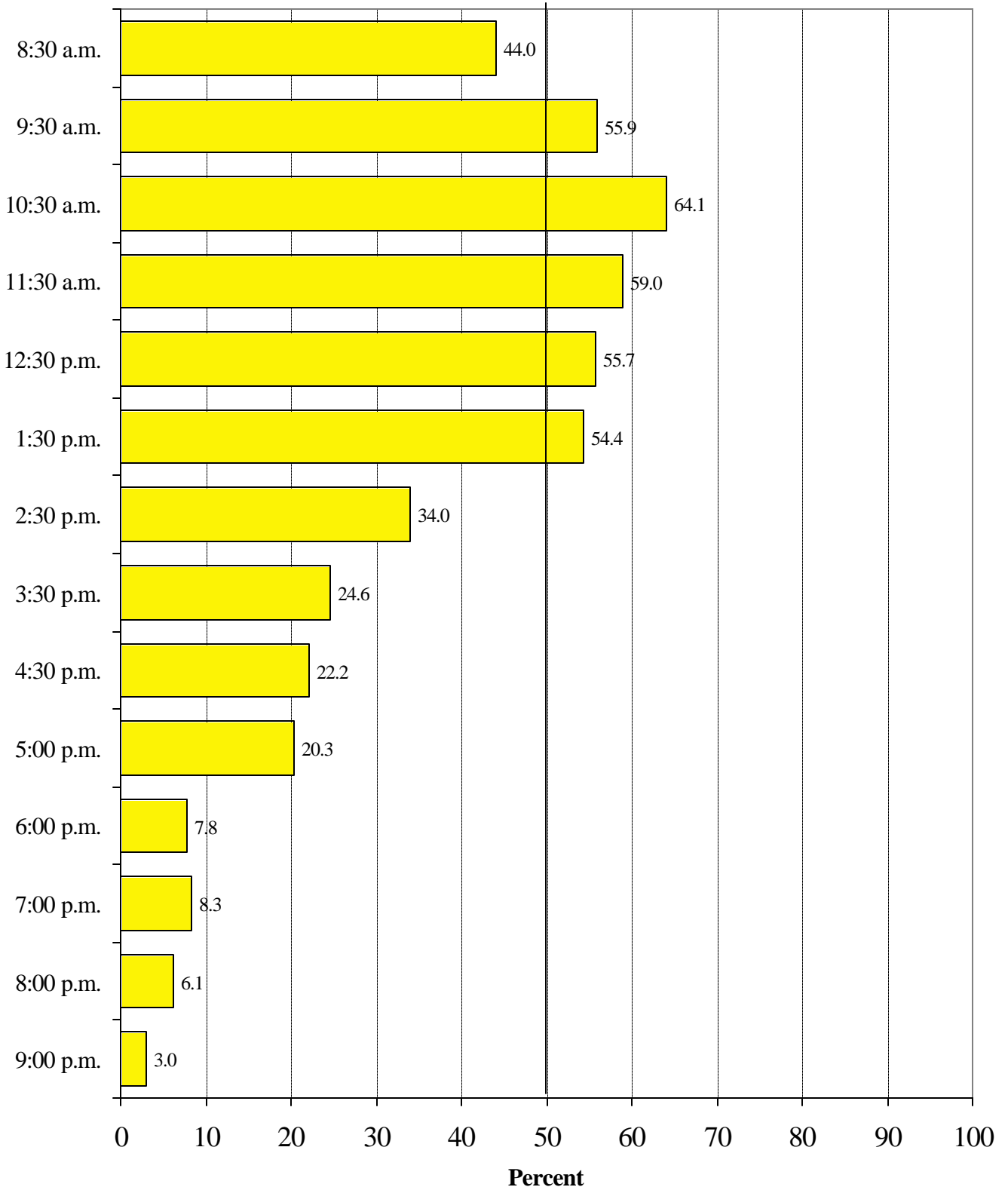
**Chart 7**  
**University of Victoria**  
**Average Monday to Friday Room Utilization**  
**by Starting Time**



**Chart 8**  
**University of Victoria**  
**Monday to Friday Seat Utilization**  
**for Scheduled Instruction by Starting Time**



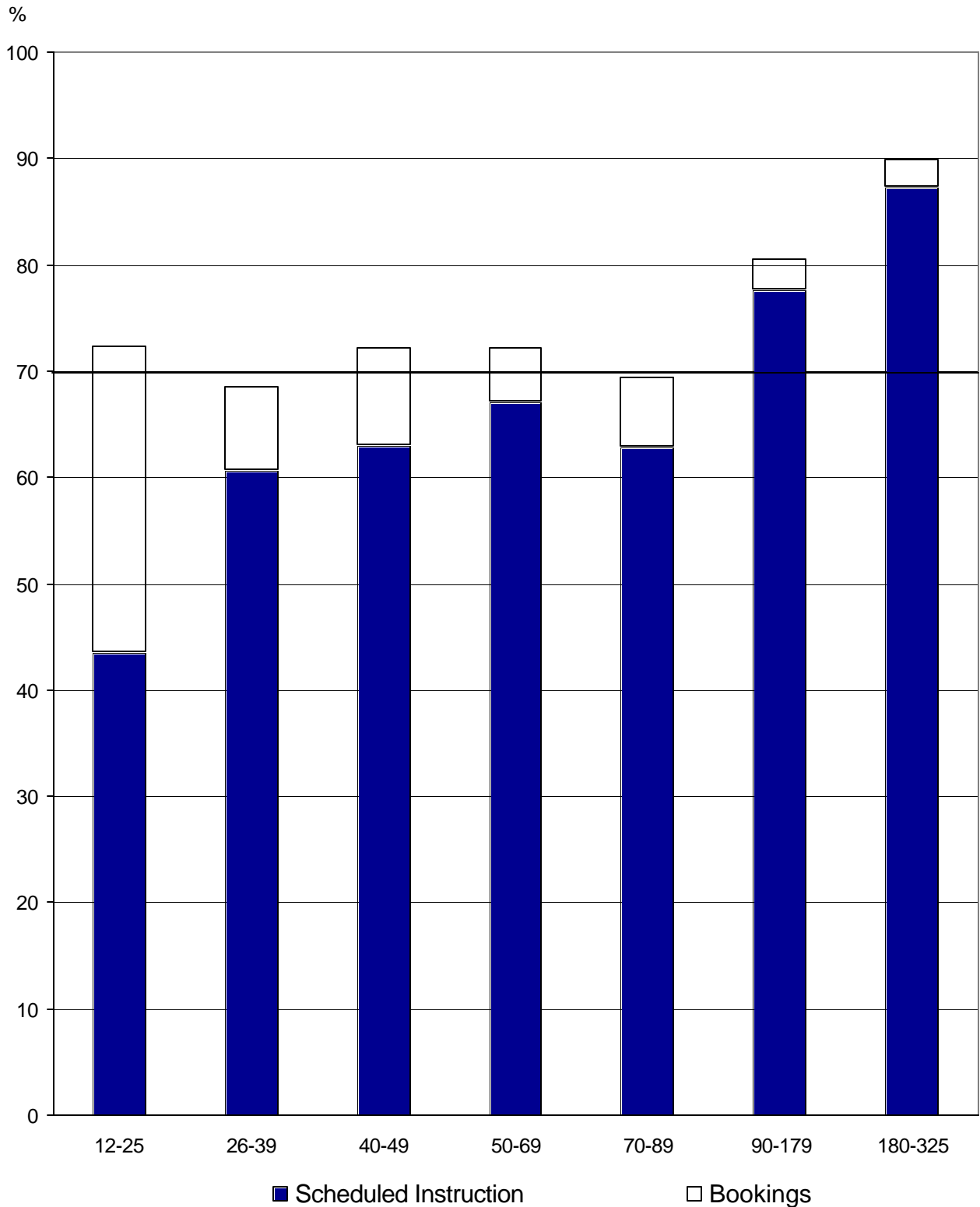
**Chart 9**  
**University of Victoria**  
**Average Monday to Friday Seat Utilization**  
**for Scheduled Instruction By Starting Time**



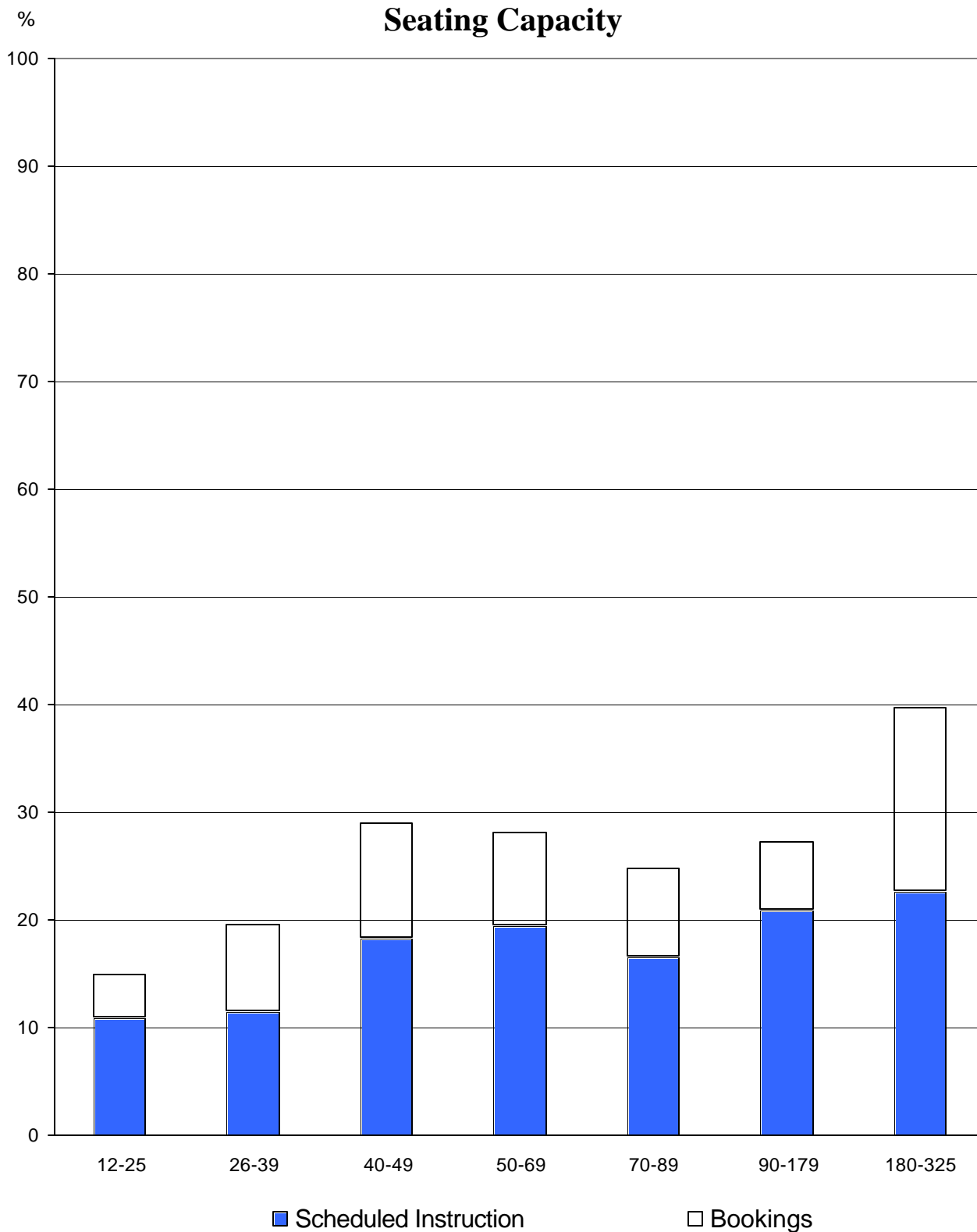
**Table 1**  
**2002/03 Monday to Friday Daytime Use by Seating Capacity**

<b>Seating Capacity</b>	<b>No. of Rooms</b>	<b>No. of Seats</b>	<b>Area in Sq. M.</b>	<b>Sq. M. per Seat</b>	<b>% Sched. Instr. Seat Use</b>	<b>% Sched. Instr. Seat Use</b>	<b>% Bookings Room Use</b>	<b>% Total Room Use</b>
<b>12-25</b>	31	595	1,132	1.9	26.9	43.5	28.9	<b>72.4</b>
<b>26-39</b>	32	1,042	1,794	1.7	45.0	60.7	7.8	<b>68.5</b>
<b>40-49</b>	17	736	1,240	1.7	43.2	62.9	9.2	<b>72.1</b>
<b>50-69</b>	23	1,372	2,127	1.6	46.5	67.1	5.1	<b>72.2</b>
<b>70-89</b>	11	806	994	1.2	47.3	62.8	6.6	<b>69.4</b>
<b>90-179</b>	11	1,215	1,499	1.2	57.2	77.6	3.0	<b>80.6</b>
<b>180-325</b>	5	1,237	1,427	1.2	62.0	87.3	2.6	<b>89.9</b>
<b>University Totals</b>	<b>130</b>	<b>7,003</b>	<b>10,213</b>	<b>1.5</b>	<b>49.0</b>	<b>60.6</b>	<b>11.8</b>	<b>72.4</b>

**Chart 10**  
**University of Victoria**  
**Average Monday to Friday Daytime Room Utilization**  
**by Seating Capacity**

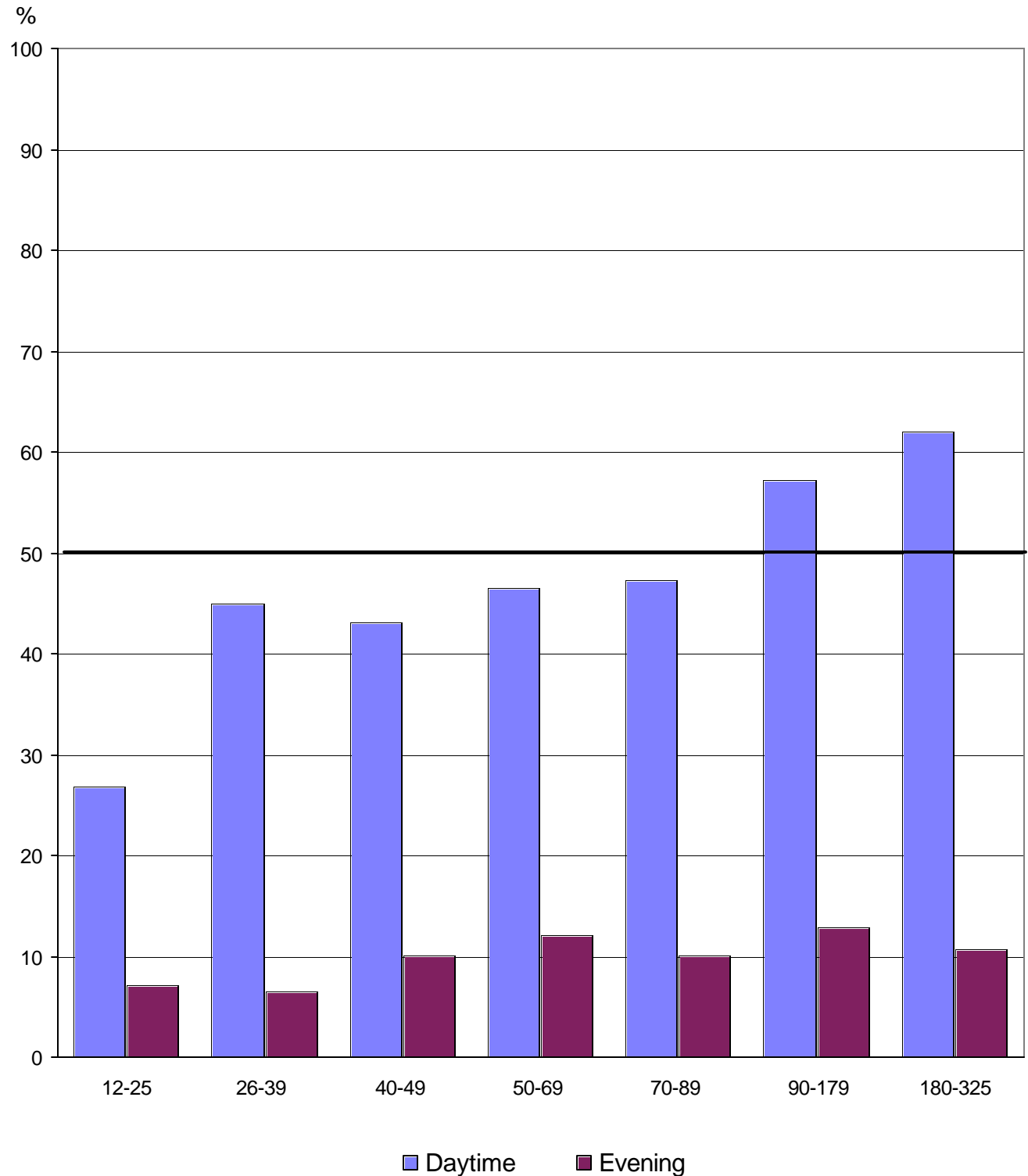


**Chart 11**  
**University of Victoria**  
**Average Monday to Friday Evening Room Utilization by**  
**Seating Capacity**





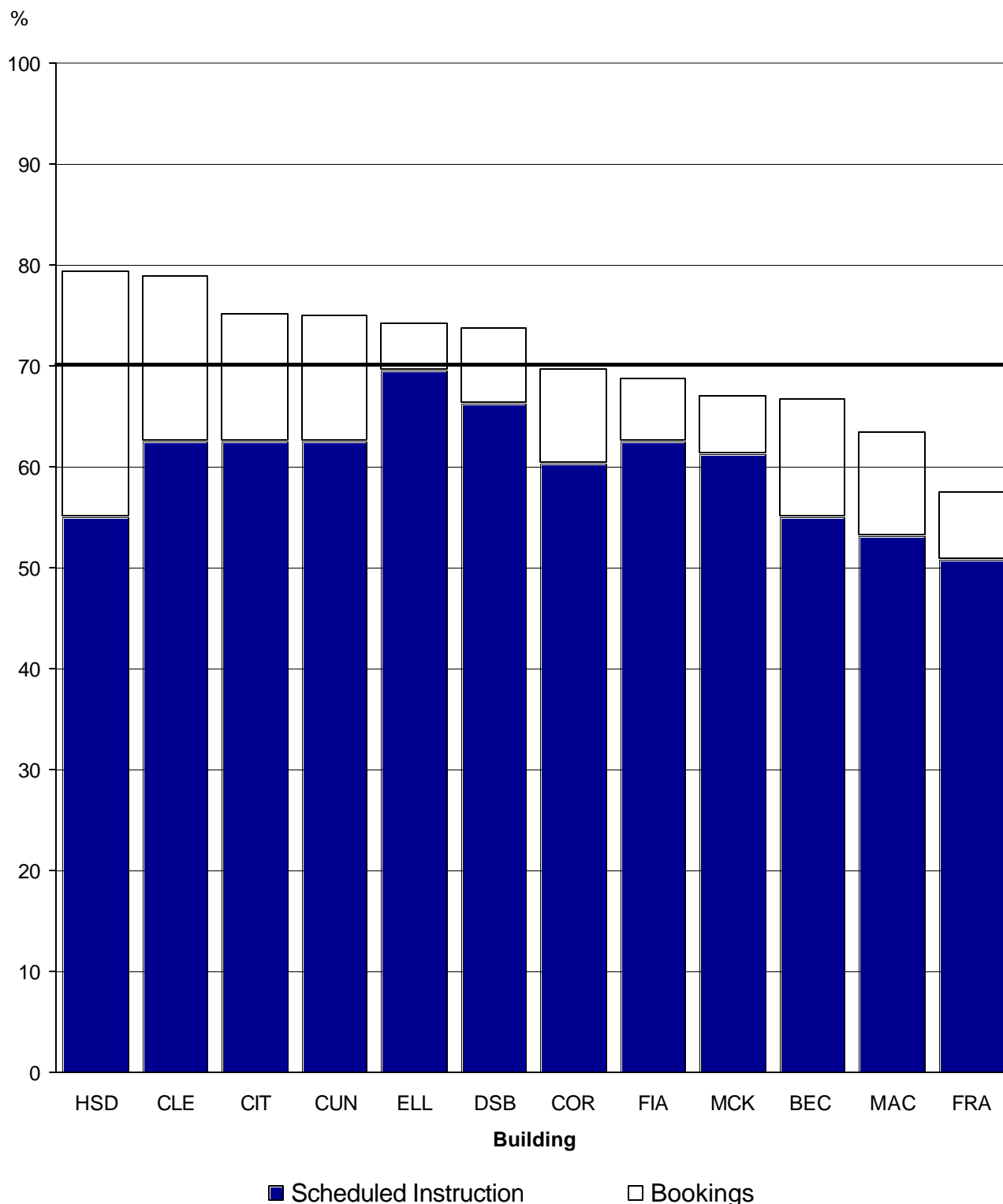
**Chart 12**  
**University of Victoria**  
**Average Monday to Friday Seat Utilization**  
**for Scheduled Instruction by Room Capacity**



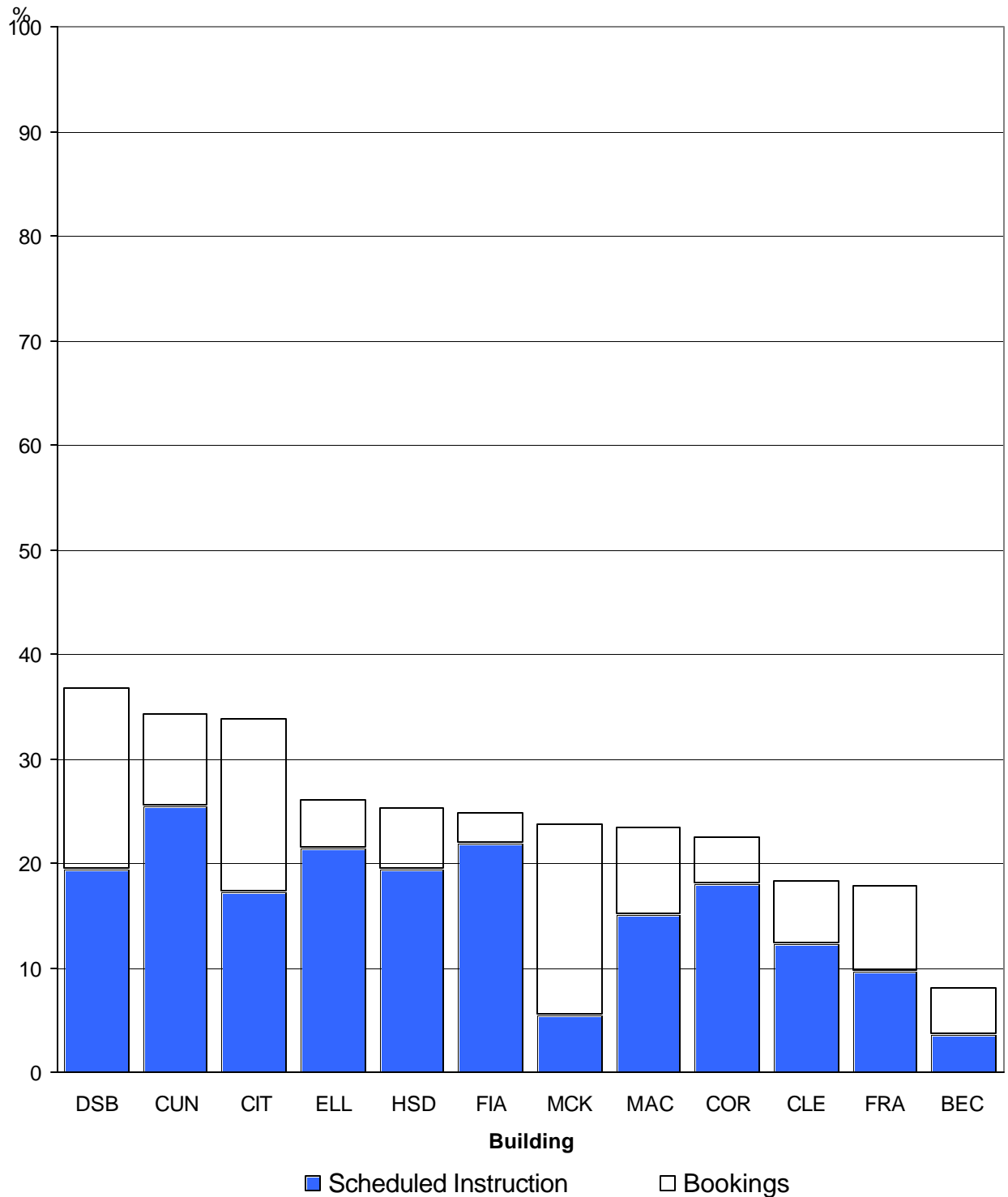
**Table 2**  
**2002/03 Monday to Friday Daytime Use by Building**

<b>Building</b>	<b>No. of Rooms</b>	<b>No. of Seats</b>	<b>Area in Sq. M.</b>	<b>Sq. M. per Seat</b>	<b>% Sched. Instr. Seat Use</b>	<b>% Sched. Instr. Room Use</b>	<b>% Bookings Room Use</b>	<b>% Total Room Use</b>
<b>H &amp; SD (HSD)</b>	4	238	357	1.5	53.5	55.0	24.4	<b>79.4</b>
<b>Clearihue (CLE)</b>	46	1,649	2,408	1.5	53.2	62.6	16.3	<b>78.9</b>
<b>Innovative Teaching (CIT)</b>	4	355	536	1.5	47.8	62.5	12.7	<b>75.2</b>
<b>Cunningham (CUN)</b>	1	58	77	1.3	33.4	62.5	12.6	<b>75.1</b>
<b>Elliott (ELL)</b>	9	703	924	1.3	53.5	69.6	4.6	<b>74.2</b>
<b>Strong (DSB)</b>	13	748	1,185	1.6	56.8	66.3	7.5	<b>73.8</b>
<b>Cornett (COR)</b>	20	1,209	1,627	1.3	48.6	60.3	9.5	<b>69.8</b>
<b>Fine Arts (FIA)</b>	3	103	180	1.7	44.3	62.5	6.2	<b>68.7</b>
<b>McKinnon (McK)</b>	2	139	198	1.4	33.9	61.3	5.8	<b>67.1</b>
<b>Business &amp; Economics (BEC)</b>	1	30	68	2.3	30.4	55.0	11.7	<b>66.7</b>
<b>MacLaurin (MAC)</b>	20	1,178	1,653	1.4	42.6	53.1	10.4	<b>63.5</b>
<b>Fraser (FRA)</b>	7	593	1,000	1.7	40.5	50.7	6.8	<b>57.5</b>
<b>University Totals</b>	<b>130</b>	<b>7,003</b>	<b>10,213</b>	<b>1.5</b>	<b>49.0</b>	<b>60.6</b>	<b>11.8</b>	<b>72.4</b>

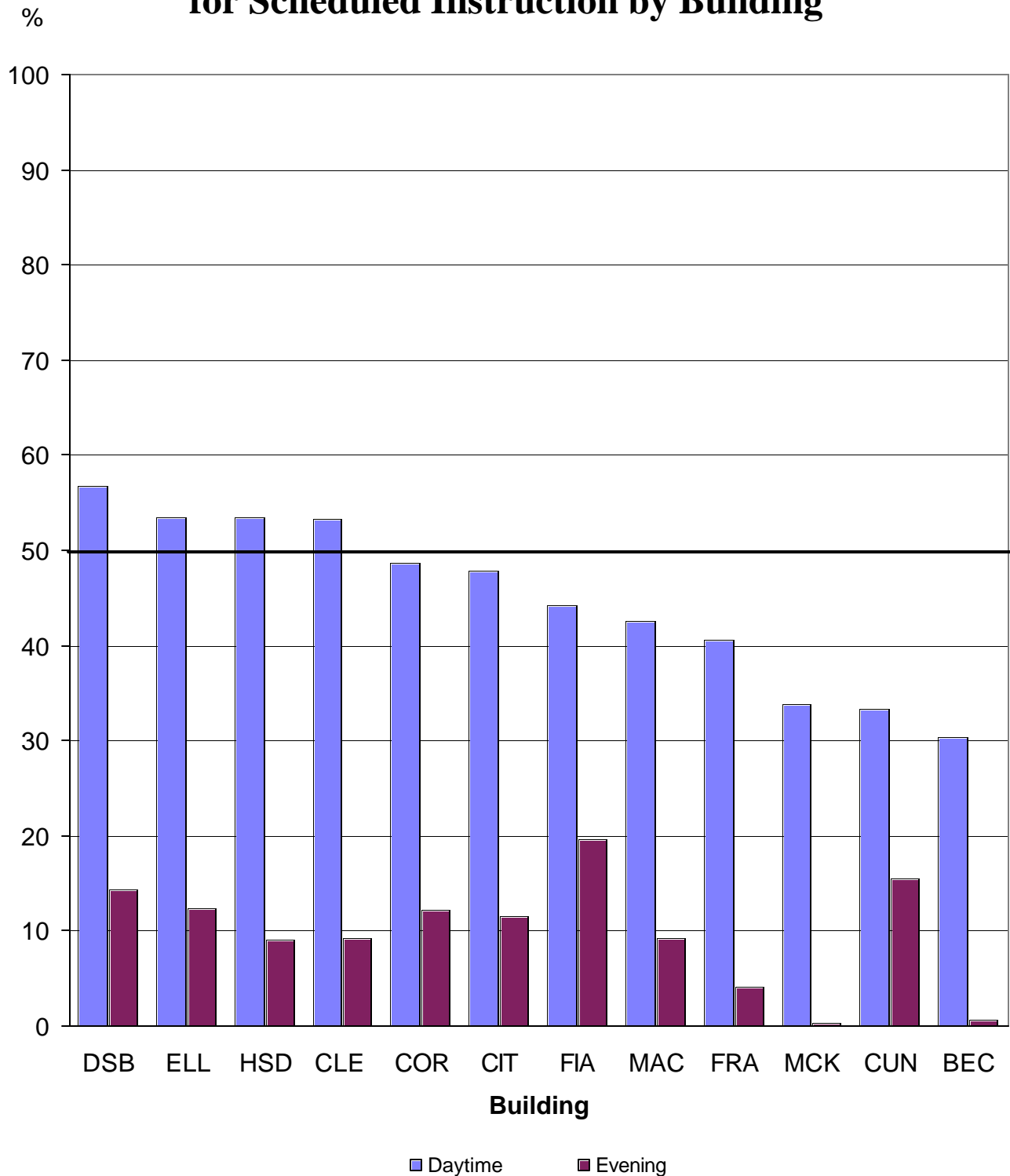
**Chart 13**  
**University of Victoria**  
**Average Monday to Friday Daytime Room Utilization**  
**by Building**



**Chart 14**  
**University of Victoria**  
**Average Monday to Friday Evening Room Utilization**  
**by Building**



**Chart 15**  
**University of Victoria**  
**Average Monday to Friday Seat Utilization**  
**for Scheduled Instruction by Building**



**Table 3**  
**Historical Monday to Friday Percentage Utilization Summary**

	90/91	91/92	92/93	93/94	94/95	95/96	96/97	97/98	01/02	02/03
<b><u>Room Utilization</u></b>										
<b>Day</b>										
Scheduled Instruction	68.6	70.9	66.9	64.5	63.1	67.4	67.6	62.7	59.5	60.6
Bookings	8.1	12.8	12.0	11.8	11.7	10.6	10.5	10.2	11.9	11.8
Total	76.7	83.7	78.9	76.3	74.8	78.0	78.1	72.9	71.4	72.4
<b>Evening</b>										
Scheduled Instruction	18.2	18.9	17.4	18.5	18.9	19.0	17.4	15.0	11.9	15.3
Bookings	9.6	12.1	14.8	14.1	14.0	13.5	13.2	11.2	8.4	7.8
Total	27.8	31.0	32.2	32.6	32.9	32.5	30.6	26.2	20.3	23.1
<b><u>Seat Utilization</u></b>										
(Scheduled Instruction)										
Day	51.5	53.2	50.2	47.5	47.6	53.3	55.1	52.3	50.7	49.0
Evening	11.0	10.7	9.8	10.9	10.1	11.4	10.6	10.0	11.5	10.3

**APPENDIX**  
**2002/03 Classroom Inventory**

<b>Room Size Interval</b>	<b>Room</b>	<b>No. of Seats</b>	<b>Area in Sq. M.</b>	<b>Sq. M. per Seat</b>	<b>Sched. Instr. % Day Use</b>	<b>Bookings % Day Use</b>	<b>Total % Day Use</b>
12 to 25	CLEB346	12	24.3	2.03	40.0	5.2	45.2
	CLEC116	12	22.1	1.84	40.0	8.1	48.1
	CLEC118	12	22.1	1.84	62.5	7.4	69.9
	CLEB446	14	24.3	1.74	27.5	18.0	45.5
	CLED261	14	25.7	1.84	48.7	18.0	66.7
	CORA132	14	27.5	1.96	41.2	12.5	53.7
	CLEC214	16	26.5	1.66	53.7	16.1	69.8
	CLED123	18	32.4	1.80	0.0	100.0	100.0
	CLED127	18	31.2	1.73	0.0	100.0	100.0
	CLED129	18	31.6	1.76	0.0	100.0	100.0
	CLED133	18	32.2	1.79	0.0	100.0	100.0
	CORA372	18	37.7	2.09	35.0	23.4	58.4
	CORB130	18	37.3	2.07	30.0	25.5	55.5
	MACD117	18	31.2	1.73	42.5	1.4	43.9
	CLEB215	20	37.6	1.88	57.5	11.7	69.2
	CLEB315	20	39.1	1.96	60.0	17.3	77.3
	CLEB415	20	37.4	1.87	82.5	7.5	90.0
	CLEC316	20	37.5	1.88	57.5	8.3	65.8
	CORA339	20	33.5	1.68	42.5	35.7	78.2
	DSBC114	20	44.9	2.25	45.0	36.8	81.8
	DSBC124	20	44.9	2.25	46.2	11.5	57.7
	FIA209	20	44.0	2.20	52.5	12.3	64.8
	ELL164	22	42.4	1.93	85.0	1.1	86.1
	CLED124	24	41.1	1.71	0.0	100.0	100.0
	CLED128	24	40.8	1.70	78.7	5.2	83.9
	CLED130	24	34.8	1.45	77.5	7.6	85.1
	CLED134	24	40.5	1.69	62.5	8.3	70.8
	ELL161	24	41.9	1.75	65.0	6.7	71.7
	HSDA250	24	52.3	2.18	18.7	61.4	80.1
	MACD281	24	54.7	2.28	45.0	4.9	49.9
	CIT 120	25	58.7	2.26	50.0	21.4	71.4
	<b>31</b>	<b>595</b>	<b>1,132.2</b>	<b>1.90</b>	<b>43.5</b>	<b>28.9</b>	<b>72.4</b>
26 to 39	FRA204	27	67.8	2.51	47.5	4.0	51.5
	FRA205	27	67.7	2.51	15.0	8.9	23.9
	CLEC111	28	35.7	1.28	77.5	3.4	80.9
	CLEC113	28	38.4	1.37	67.5	11.0	78.5
	CLEC115	28	54.8	1.96	78.7	3.2	81.9
	BEC 363	30	68.2	2.27	55.0	11.6	66.6
	CLEB020	30	43.8	1.46	37.5	11.6	49.1
	HSDA260	30	61.7	2.06	52.5	28.2	80.7
	HSDA264	30	60.4	2.01	58.7	6.9	65.6
	MACA166	30	66.7	2.22	62.5	8.5	71.0
	MACA541	30	52.1	1.74	27.5	4.4	31.9
	MACD105	30	42.5	1.42	20.0	35.1	55.1
	CLEA304	32	48.1	1.50	80.0	4.9	84.9
	CLEC108	32	57.1	1.78	75.0	5.2	80.2

**APPENDIX**  
**2002/03 Classroom Inventory**

Room Size Interval	Room	No. of Seats	Area in Sq. M.	Sq. M. per Seat	Sched. Instr. % Day Use	Bookings % Day Use	Total % Day Use
	CORA128	32	41.4	1.29	60.0	4.4	64.4
	MCK155	32	61.0	1.91	47.5	9.7	57.2
	FIA104	33	59.5	1.80	67.5	5.0	72.5
	CLEA118	34	55.7	1.64	90.0	0.0	90.0
	CLED126	35	58.7	1.68	60.0	5.0	65.0
	CLED131	35	50.2	1.43	77.5	3.3	80.8
	CLED132	35	58.8	1.68	75.0	4.6	79.6
	DSBC126	35	68.0	1.94	55.0	5.6	60.6
	DSBC128	35	67.3	1.92	60.0	4.9	64.9
	DSBC130	35	67.7	1.93	72.5	0.5	73.0
	FRA142	35	80.8	2.31	48.7	2.1	50.8
	MACD107	35	36.7	1.05	57.5	18.3	75.8
	MACD109	35	37.7	1.08	57.5	12.4	69.9
	MACD115	35	47.8	1.37	40.0	4.1	44.1
	CORB145	36	76.4	2.12	52.5	15.8	68.3
	CLEC109	37	53.4	1.44	80.0	5.1	85.1
	CLEA203	38	60.0	1.58	95.0	0.9	95.9
	CLEA204	38	48.0	1.26	90.0	0.5	90.5
	<b>32</b>	<b>1,042</b>	<b>1,794.1</b>	<b>1.72</b>	<b>60.7</b>	<b>7.8</b>	<b>68.5</b>
40 to 49	CIT 116	40	116.6	2.92	82.5	7.1	89.6
	CLEA211	40	51.6	1.29	72.5	2.0	74.5
	CORA148	40	84.2	2.11	71.2	8.3	79.5
	DSBC113	40	88.0	2.20	47.5	19.3	66.8
	MACD287	40	91.0	2.28	57.5	19.5	77.0
	CLEC110	42	57.8	1.38	90.0	3.9	93.9
	CLED125	42	50.2	1.20	90.0	0.8	90.8
	CLED267	42	51.7	1.23	60.0	11.9	71.9
	CLEA306	44	64.1	1.46	60.0	3.7	63.7
	MACD283	44	57.8	1.31	32.5	22.9	55.4
	DSBC108	45	70.5	1.57	60.0	9.6	69.6
	MACA168	45	75.9	1.69	70.0	0.2	70.2
	MACD101	45	84.4	1.88	72.5	1.9	74.4
	MACD103	45	84.4	1.88	41.2	16.4	57.6
	MACD114	45	56.0	1.24	31.2	27.0	58.2
	CLEA206	48	64.1	1.34	78.7	1.5	80.2
	DSBC125	49	91.7	1.87	52.5	0.0	52.5
	<b>17</b>	<b>736</b>	<b>1,240.0</b>	<b>1.68</b>	<b>62.9</b>	<b>9.2</b>	<b>72.1</b>
50 to 69	CORB111	50	73.1	1.46	81.2	0.6	81.8
	CORB135	50	118.9	2.38	47.5	14.3	61.8
	FIA103	50	76.6	1.53	67.5	1.2	68.7
	MACD111	50	97.4	1.95	60.0	1.3	61.3
	ELL162	54	72.0	1.33	73.7	3.5	77.2
	FRA157	54	135.8	2.51	62.5	19.4	81.9
	CLEA215	58	77.9	1.34	75.0	0.5	75.5
	CUN146	58	76.6	1.32	62.5	12.5	75.0
	ELL160	59	67.4	1.14	66.2	2.3	68.5
	CORB107	60	67.2	1.12	66.2	4.4	70.6



**APPENDIX**  
**2002/03 Classroom Inventory**

<b>Room Size Interval</b>	<b>Room</b>	<b>No. of Seats</b>	<b>Area in Sq. M.</b>	<b>Sq. M. per Seat</b>	<b>Sched. Instr. % Day Use</b>	<b>Bookings % Day Use</b>	<b>Total % Day Use</b>
	DSBC112	60	93.8	1.56	87.5	0.1	87.6
	FRA152	60	134.9	2.25	57.5	2.2	59.7
	MACA169	60	82.0	1.37	57.5	3.1	60.6
	CLEA301	62	74.7	1.20	95.0	0.4	95.4
	CORA229	62	79.6	1.28	90.0	0.0	90.0
	CLEA309	63	88.4	1.40	77.5	5.0	82.5
	DSBC116	63	128.7	2.04	67.5	5.1	72.6
	CLEA303	64	73.4	1.15	62.5	7.0	69.5
	CORA129	65	79.6	1.22	70.0	3.2	73.2
	FRA158	65	168.9	2.60	57.5	7.0	64.5
	ELL060	68	86.7	1.28	60.0	4.2	64.2
	ELL061	68	86.1	1.27	37.5	11.3	48.8
	CLEA201	69	87.5	1.27	61.2	7.4	68.6
	<b>23</b>	<b>1,372</b>	<b>2,127.2</b>	<b>1.55</b>	<b>67.1</b>	<b>5.1</b>	<b>72.2</b>
70 to 89	CORA125	70	82.9	1.18	47.5	9.6	57.1
	CORA225	70	82.9	1.18	22.5	9.6	32.1
	MACD110	70	86.8	1.24	72.5	2.4	74.9
	MACD116	70	86.3	1.23	65.0	7.0	72.0
	DSBC122	72	128.8	1.79	80.0	0.7	80.7
	CLEA307	74	88.0	1.19	82.5	1.1	83.6
	CLEA311	74	89.8	1.21	72.5	1.3	73.8
	DSBC118	74	88.0	1.19	90.0	2.7	92.7
	CIT 110	75	52.7	0.70	30.0	21.7	51.7
	CLEC112	77	115.7	1.50	72.5	4.7	77.2
	ELL062	80	91.9	1.15	56.2	11.3	67.5
	<b>11</b>	<b>806</b>	<b>993.8</b>	<b>1.23</b>	<b>62.8</b>	<b>6.6</b>	<b>69.4</b>
90 to 179	CORA121	90	109.1	1.21	72.5	1.7	74.2
	CLEA207	92	129.7	1.41	95.0	0.0	95.0
	CORA120	94	103.0	1.10	70.0	5.1	75.1
	CORB143	96	117.1	1.22	67.5	7.3	74.8
	MCK150	107	137.2	1.28	75.0	1.9	76.9
	CORA221	108	109.1	1.01	82.5	4.9	87.4
	CORB108	108	133.4	1.24	72.5	2.4	74.9
	CORB112	108	132.8	1.23	82.5	0.7	83.2
	MACD288	110	147.4	1.34	61.2	7.2	68.4
	ELL167	148	198.1	1.34	85.0	0.3	85.3
	HSDA240	154	182.1	1.18	90.0	0.7	90.7
	<b>11</b>	<b>1,215</b>	<b>1,499.0</b>	<b>1.23</b>	<b>77.6</b>	<b>3.0</b>	<b>80.6</b>
180 to 325	ELL168	180	237.1	1.32	97.5	0.0	97.5
	DSBC103	200	202.6	1.01	97.5	0.4	97.9
	CIT 105	215	308.4	1.43	87.5	0.1	87.6
	MACA144	317	334.5	1.06	87.5	8.8	96.3
	FRA159	325	344.0	1.06	66.2	3.5	69.7
	<b>5</b>	<b>1,237</b>	<b>1,426.6</b>	<b>1.15</b>	<b>87.3</b>	<b>2.6</b>	<b>89.9</b>
<b>Totals</b>	<b>130</b>	<b>7,003</b>	<b>10,212.9</b>	<b>1.46</b>	<b>60.6</b>	<b>11.8</b>	<b>72.4</b>