

University of Victoria

CLASSROOM UTILIZATION

2001/02



***University Of Victoria
Classroom Utilization
2001/02***

***Prepared by: Alan R. Wilson
Ciel McGuire***

Our Web Home Page is <http://www.inst.uvic.ca>

***Institutional Planning & Analysis
June 24, 2002***

Classroom Utilization

2001/02

Table of Contents

Introduction

Chart	1	—	Monday Room Utilization by Starting Time
Chart	2	—	Tuesday Room Utilization by Starting Time
Chart	3	—	Wednesday Room Utilization by Starting Time
Chart	4	—	Thursday Room Utilization by Starting Time
Chart	5	—	Friday Room Utilization by Starting Time
Chart	6	—	Saturday Room Utilization by Starting Time
Chart	7	—	Average Monday to Friday Room Utilization by Starting Time
Chart	8	—	Monday to Friday Daytime Seat Utilization for Scheduled Instruction by Starting Time
Chart	9	—	Average Monday to Friday Seat Utilization for Scheduled Instruction by Starting Time
Table	1	—	Monday to Friday Daytime Use by Seating Capacity
Chart	10	—	Average Monday to Friday Daytime Room Utilization by Seating Capacity
Chart	11	—	Average Monday to Friday Evening Room Utilization by Seating Capacity
Chart	12	—	Average Monday to Friday Seat Utilization for Scheduled Instruction by Room Capacity
Table	2	—	Monday to Friday Daytime Use by Building
Chart	13	—	Average Monday to Friday Daytime Room Utilization by Building
Chart	14	—	Average Monday to Friday Evening Room Utilization by Building
Chart	15	—	Average Monday to Friday Seat Utilization for Scheduled Instruction by Building
Table	3	—	Historical Monday to Friday Percentage Utilization Summary
APPENDIX		—	2001/02 Classroom Inventory

Introduction

Classroom Utilization 2001/02

Methodology

This report displays the level of classroom use as of October 2001. Two components are identified: scheduled instruction and bookings. Scheduled instruction consists of regular classroom instruction and includes lectures, tutorials, some discussion groups, and labs offered in classrooms. Bookings consist of more casual classroom use, such as staff and department meetings, club usage, and conferences. No bookings are included with scheduled instruction data. However, some usage included with the bookings is actually composed of tutorials and other sections associated with regular courses. This activity can appear here due to limitations in the university course database, which cannot handle courses which meet in one room for a part of a term and then move, in that term, to another room. The system also cannot handle some short-term immersion-type courses that meet throughout the day.

Room use is divided into two time periods: daytime (8:30 a.m. - 4:30 p.m.) and evening (4:30 p.m. - 10:00 p.m.). Note that a room in use from 5:30 p.m. - 6:30 p.m. will fill the 5:30 - 6:00 time slot and half the 6:00 - 7:00 time slot. A 70% daytime room use rate is considered by many as a reasonable target. Hence a line at 70% appears on all charts that tabulate room usage. For seat use, 50% is considered a reasonable target. Hence a line at 50% appears on all charts that tabulate seat usage. Note, however, that seat usage for bookings data is not maintained. This means that all seat use results will be for scheduled instruction only.

Results

Charts 1 - 6 give daily room utilization for both scheduled instruction and bookings. Thursday is the busiest day of the week, with room use at more than 50% from 8:30 a.m. until 5:00 p.m. From 1:30 p.m. to 2:30 p.m., over 90% of the rooms are in use. Friday is the slowest day, with less than 50% room use from 8:30 a.m. to 9:30 p.m. and after 2:30 p.m. Little instruction occurs after 2:30 p.m. Charts 8 and 9 detail seat use for scheduled instruction. As with room use, Thursday is the busiest day and Friday is the slowest.

Tables 1 and Charts 10 - 12 examine utilization by room-size category. Larger rooms are, on the whole, used more frequently than smaller ones. Table 2 and Charts 13 - 15 examine utilization by building. The most heavily used buildings are Cunningham (one classroom only), Clearihue, and Strong, with over 75% daytime usage. The least used building is Fraser, with less than 50% usage. Table 3 summarizes historical classroom use. Although current room usage is lower than in the 1990s, current seat usage (for scheduled instruction) is about the same, due, in part, to the greater average capacity of the classrooms. The appendix details use by individual classroom.

Chart 1
University of Victoria
Monday Room Utilization by Starting Time

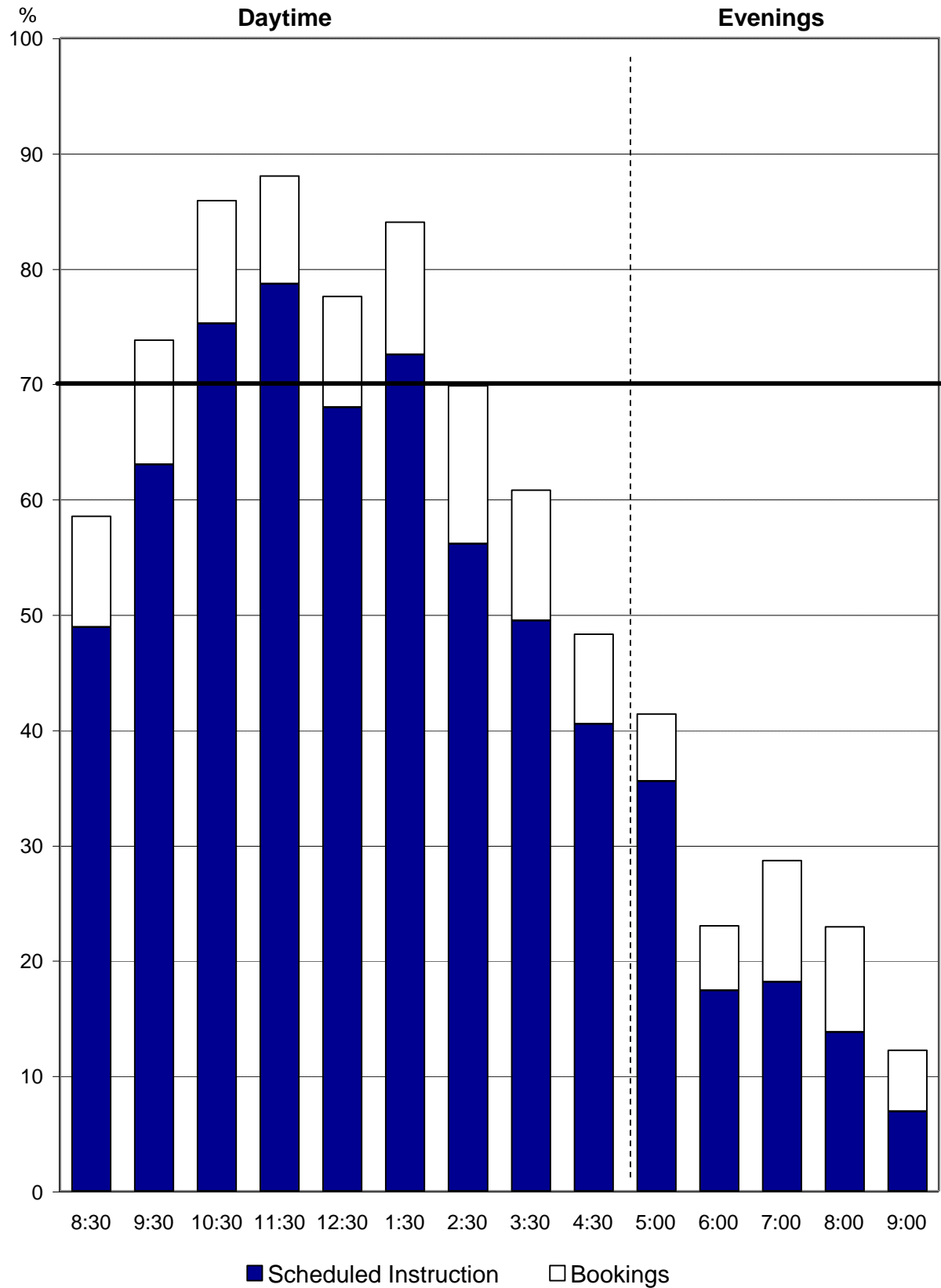


Chart 2
University of Victoria
Tuesday Room Utilization by Starting Time

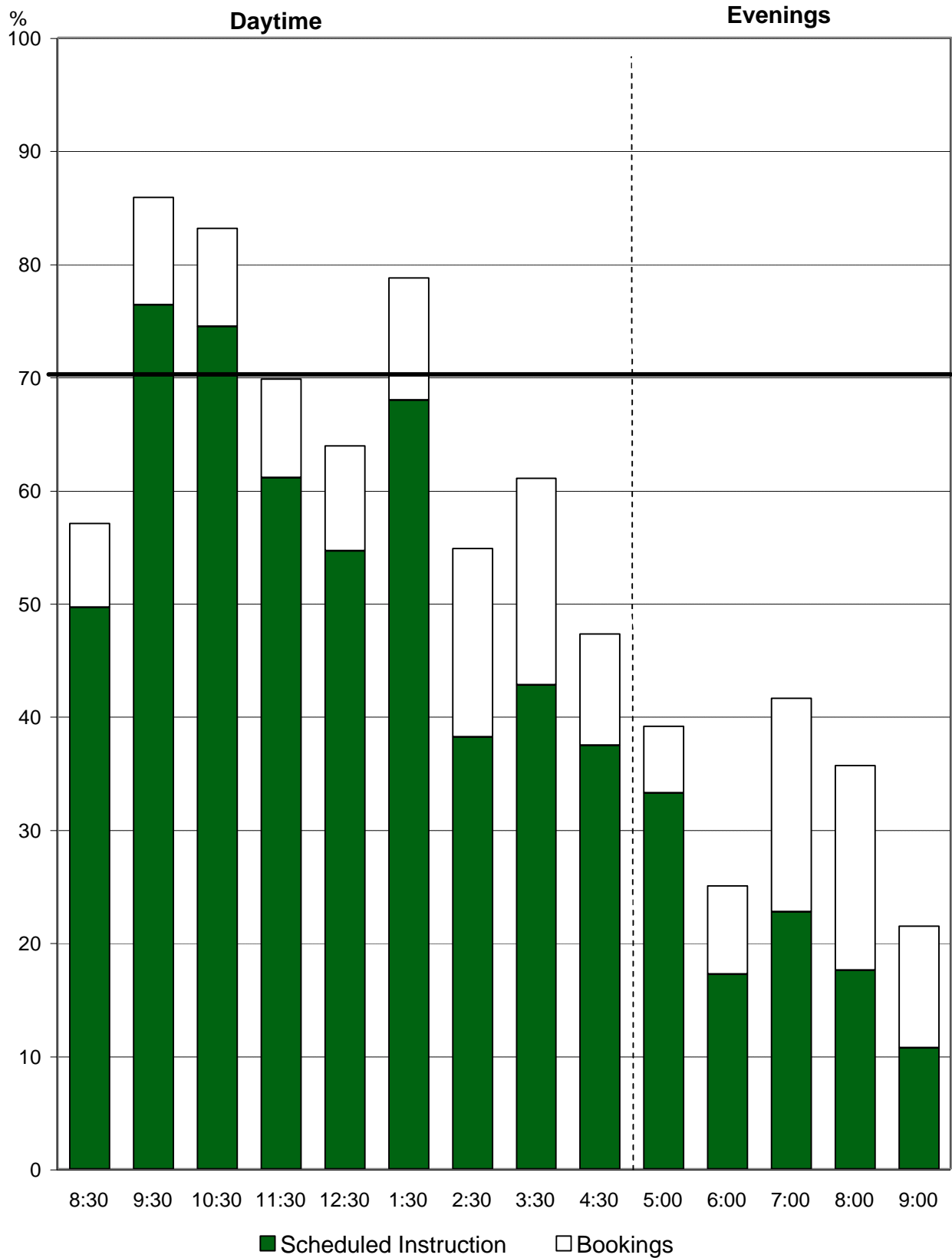


Chart 3
University of Victoria
Wednesday Room Utilization by Starting Time

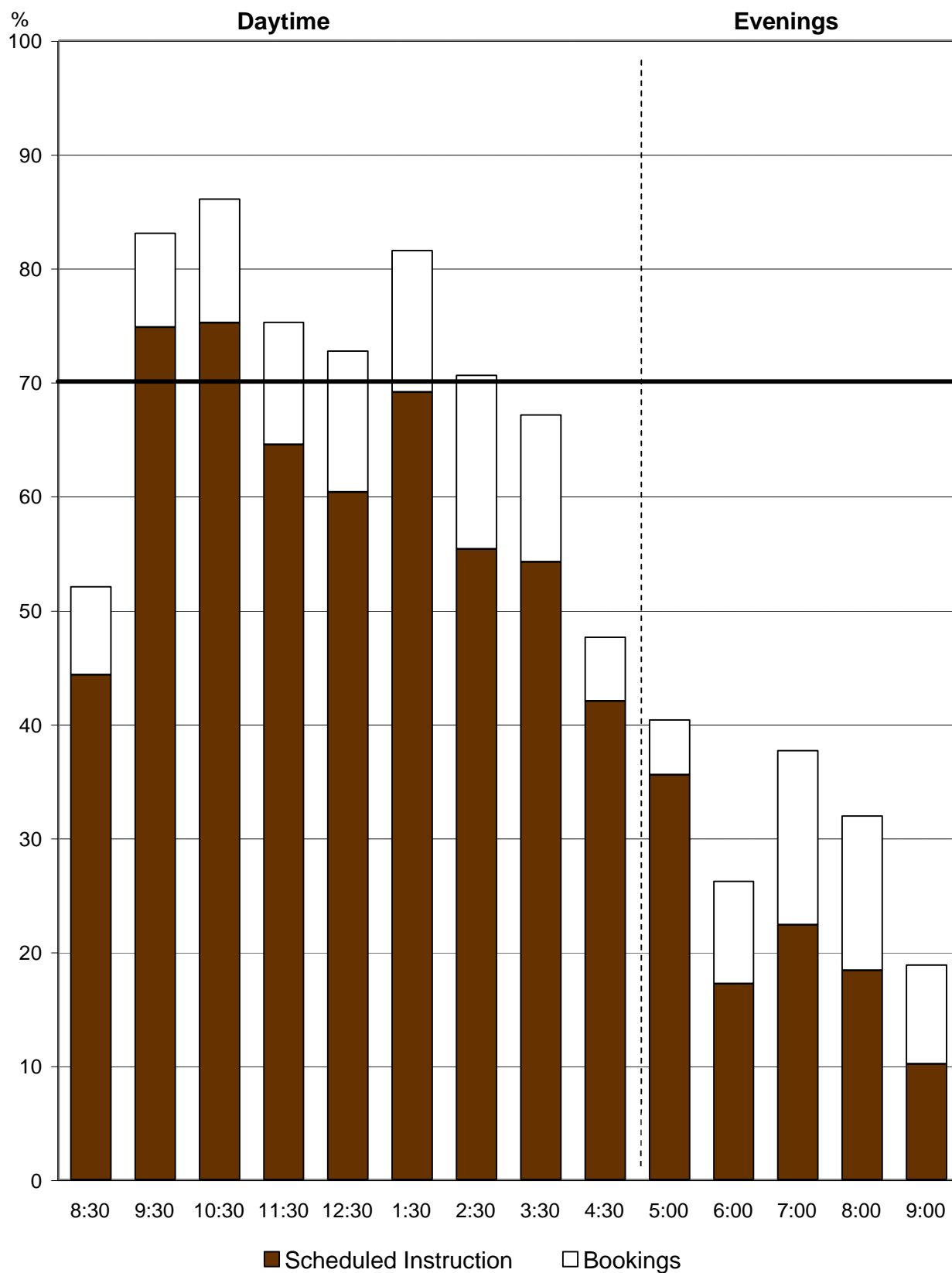


Chart 4
University of Victoria
Thursday Room Utilization by Starting Time

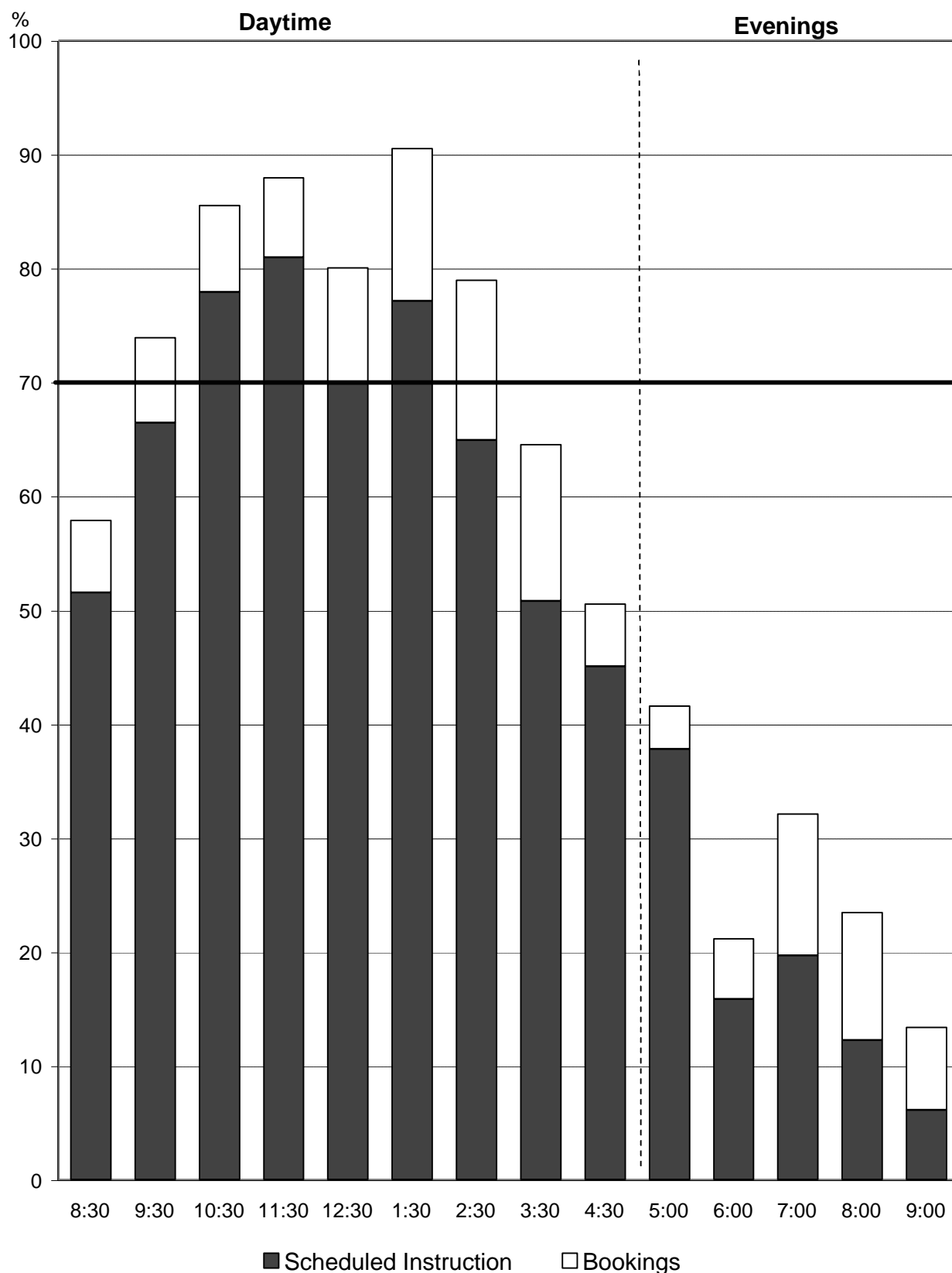


Chart 5
University of Victoria
Friday Room Utilization by Starting Time

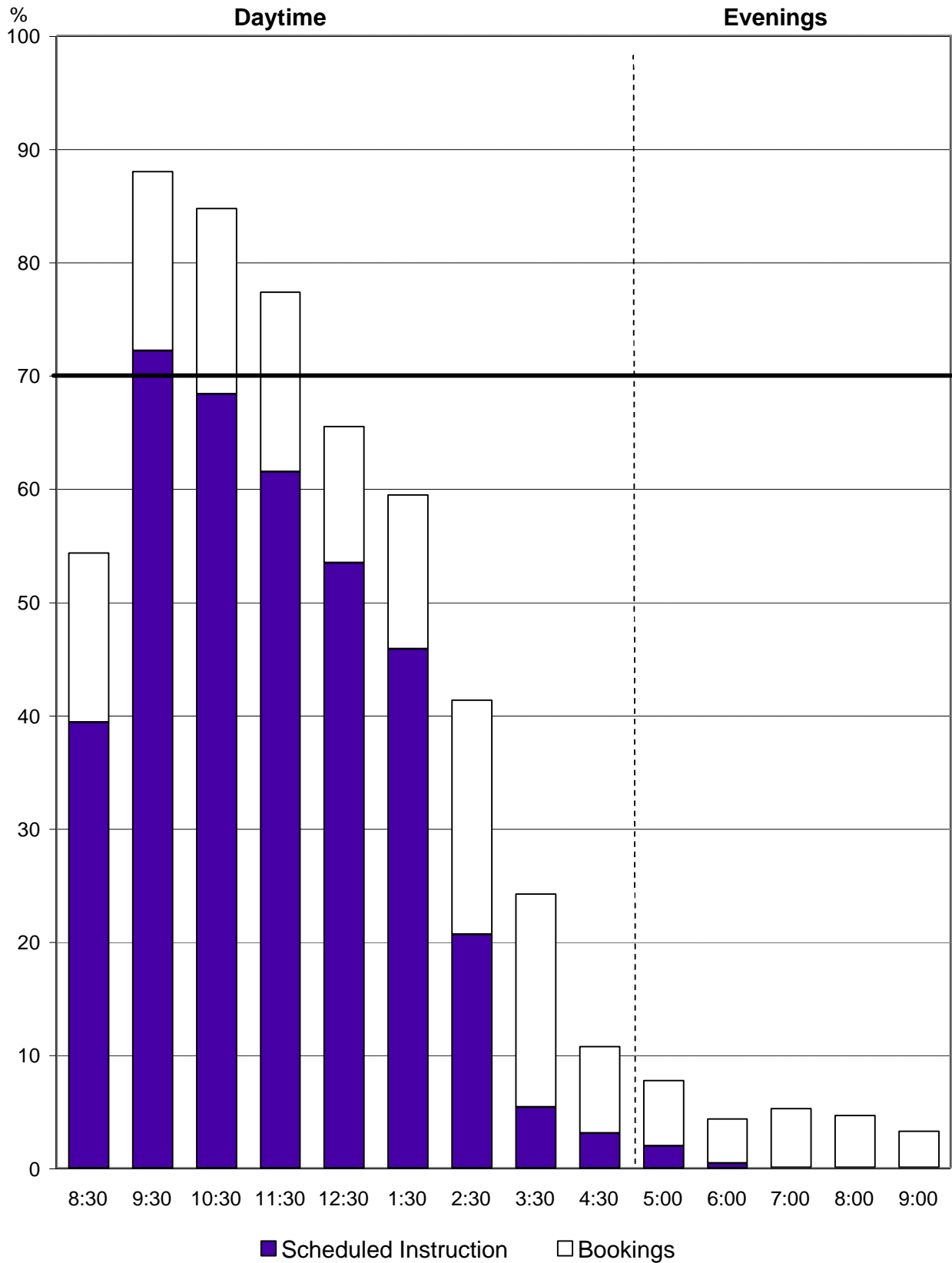


Chart 6
University of Victoria
Saturday Room Utilization by Starting Time

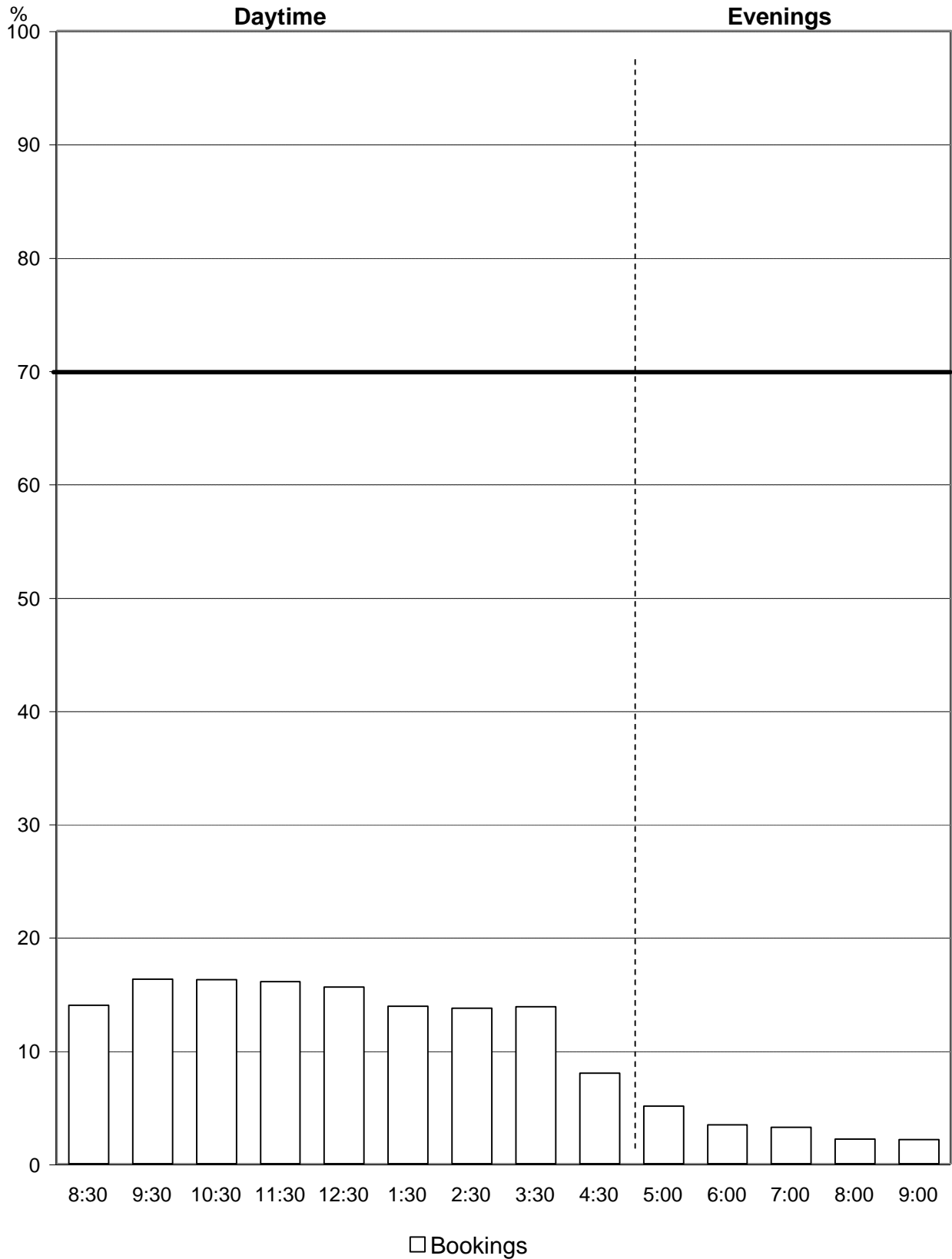


Chart 7
University of Victoria
Average Monday to Friday Room Utilization
by Starting Time

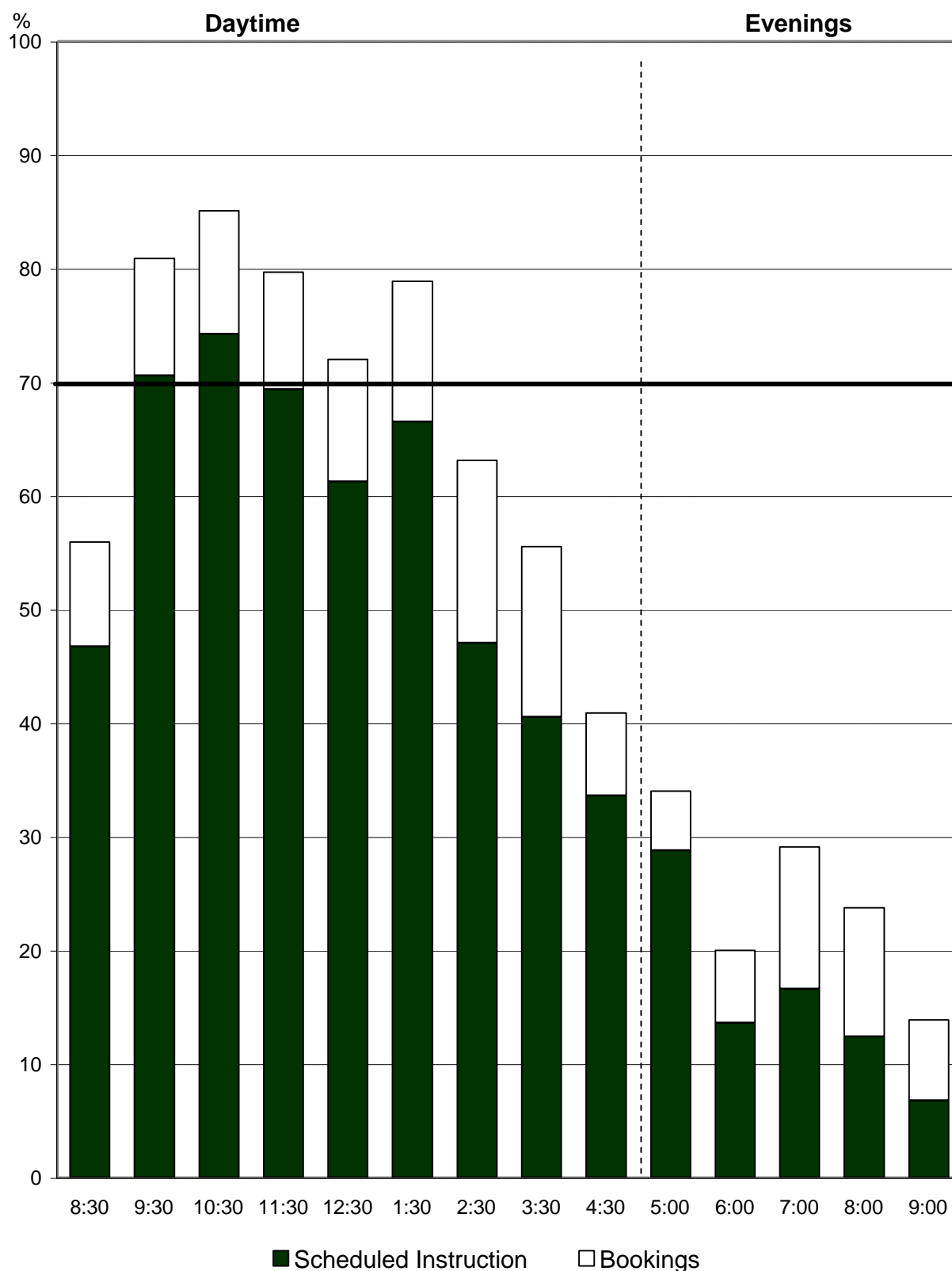


Chart 8
University of Victoria
Monday to Friday Seat Utilization
for Scheduled Instruction by Starting Time

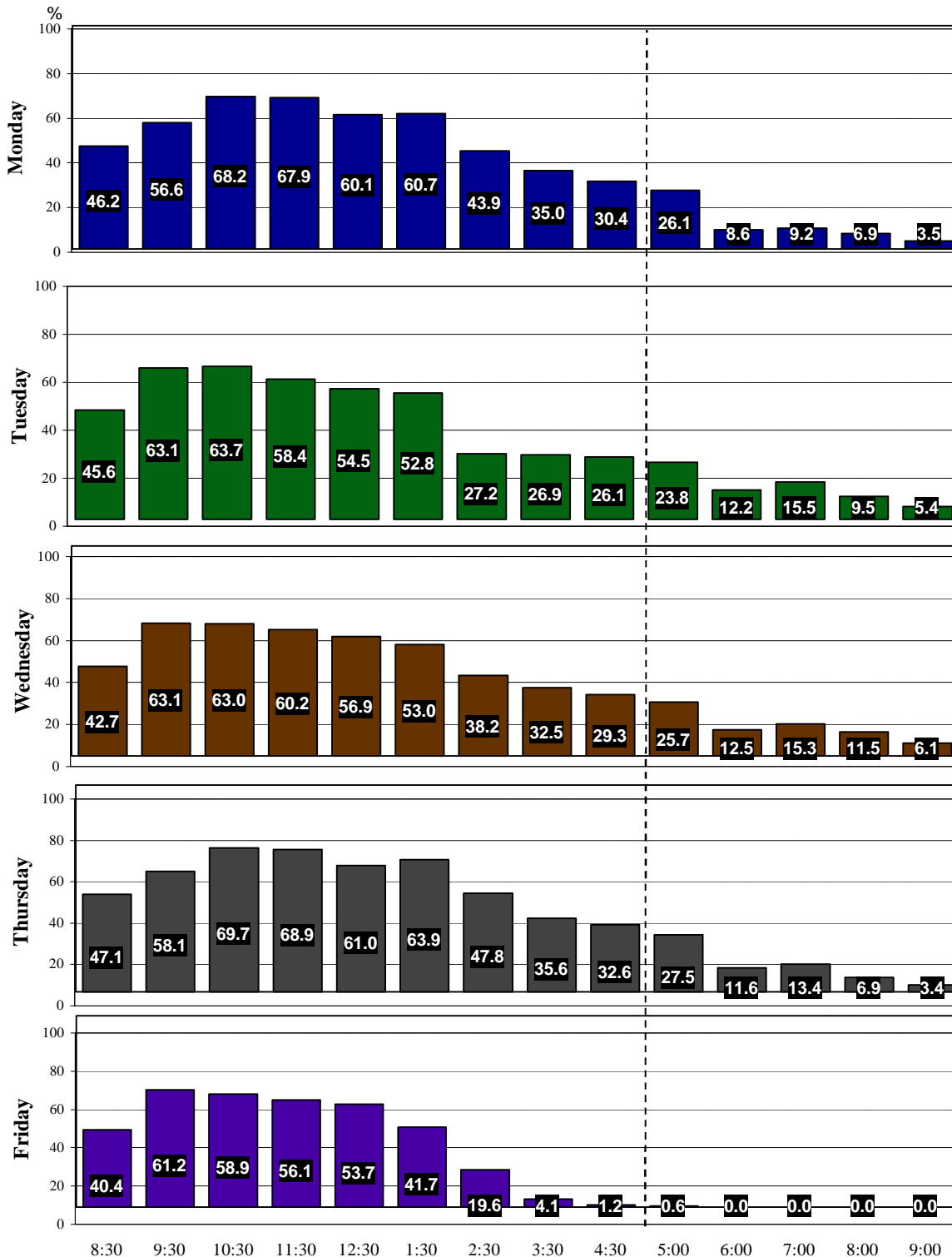


Chart 9
University of Victoria
Average Monday to Friday Seat Utilization
for Scheduled Instruction By Starting Time

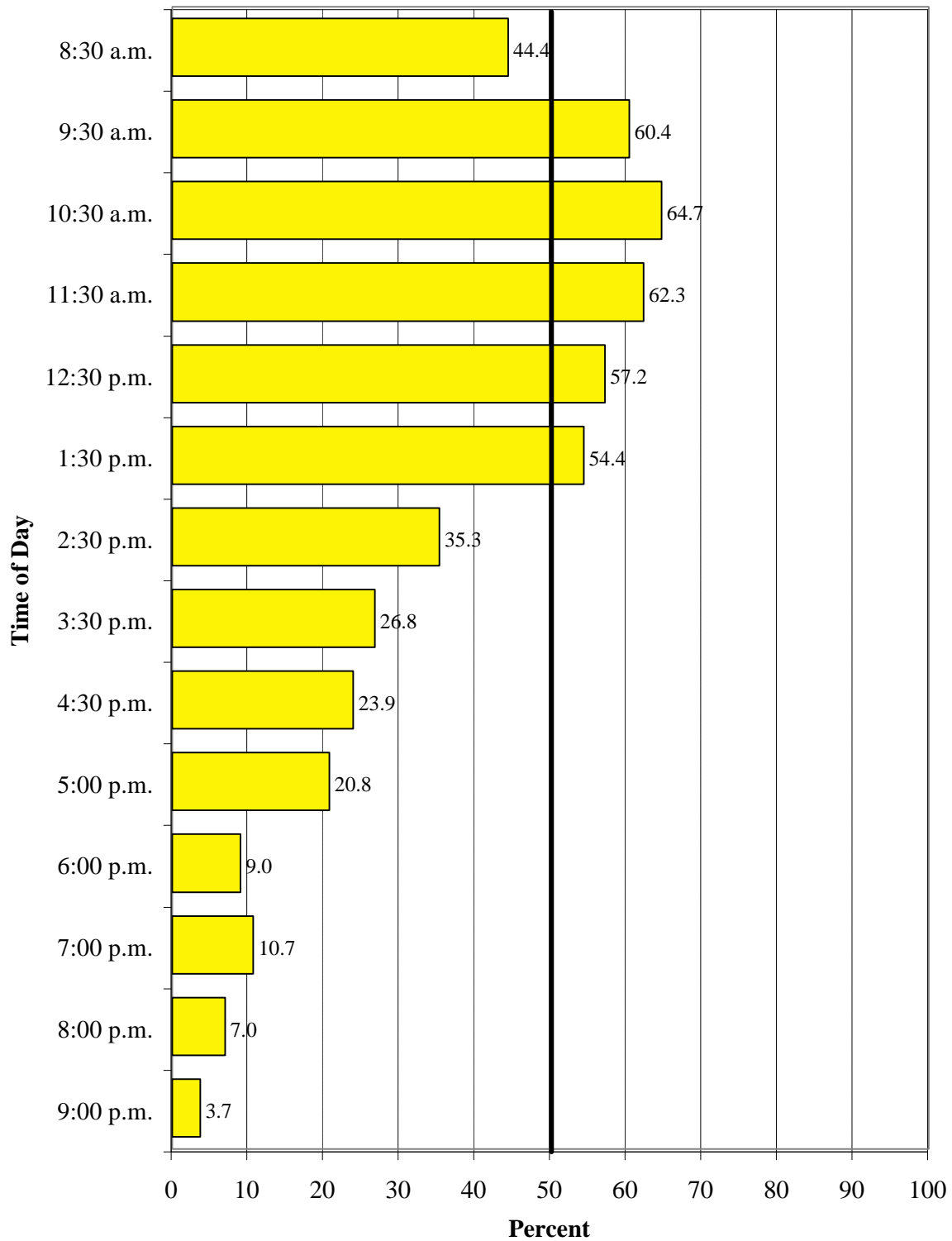


Table 1
2001/02 Monday to Friday Daytime Use by Seating Capacity

Seating Capacity	No. of Rooms	No. of Seats	Area in Sq. M.	Sq. M. per Seat	% Sched. Instr. Seat Use	% Sched Instr Room Use	% Bookings Room Use	% Total Room Use
10-25	31	586	1,149	2.0	24.2	38.4	27.0	65.4
26-39	33	1,068	1,853	1.7	44.1	59.2	7.5	66.7
40-49	17	736	1,240	1.7	46.1	64.9	8.1	73.0
50-69	22	1,309	1,999	1.5	43.3	62.2	6.8	69.0
70-89	12	880	1,123	1.3	51.4	68.9	10.1	79.0
90-179	11	1,215	1,499	1.2	65.6	84.8	3.5	88.3
180-325	5	1,243	1,427	1.1	64.3	83.8	4.1	87.9
University Totals	131	7,037	10,288	1.5	50.7	59.5	11.9	71.4

Source: Scheduling data from October 2001 Student and Bookings Databases.

Chart 10
University of Victoria
Average Monday to Friday Daytime Room Utilization
by Seating Capacity

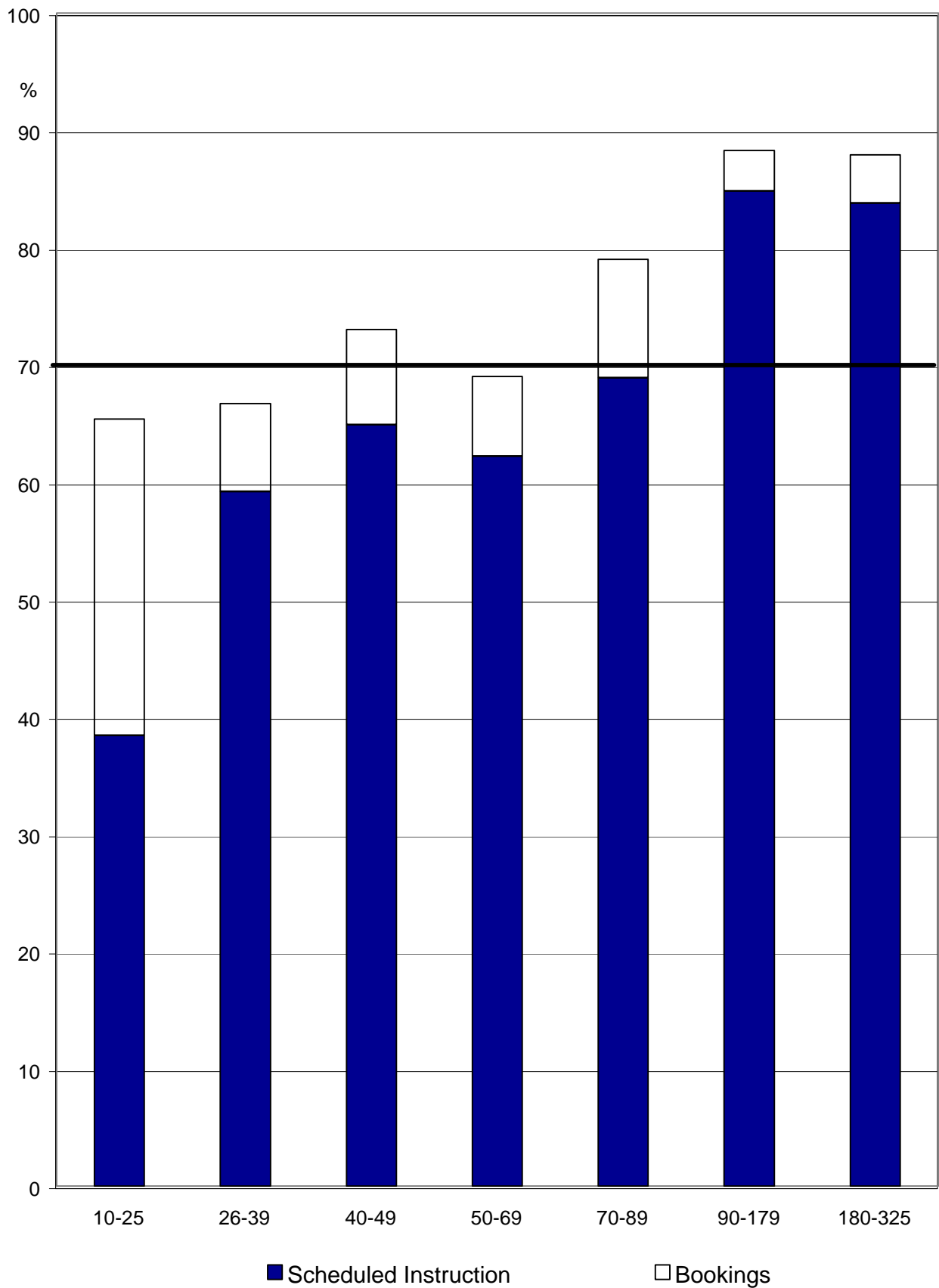


Chart 11
University of Victoria
Average Monday to Friday Evening Room Utilization
by Seating Capacity

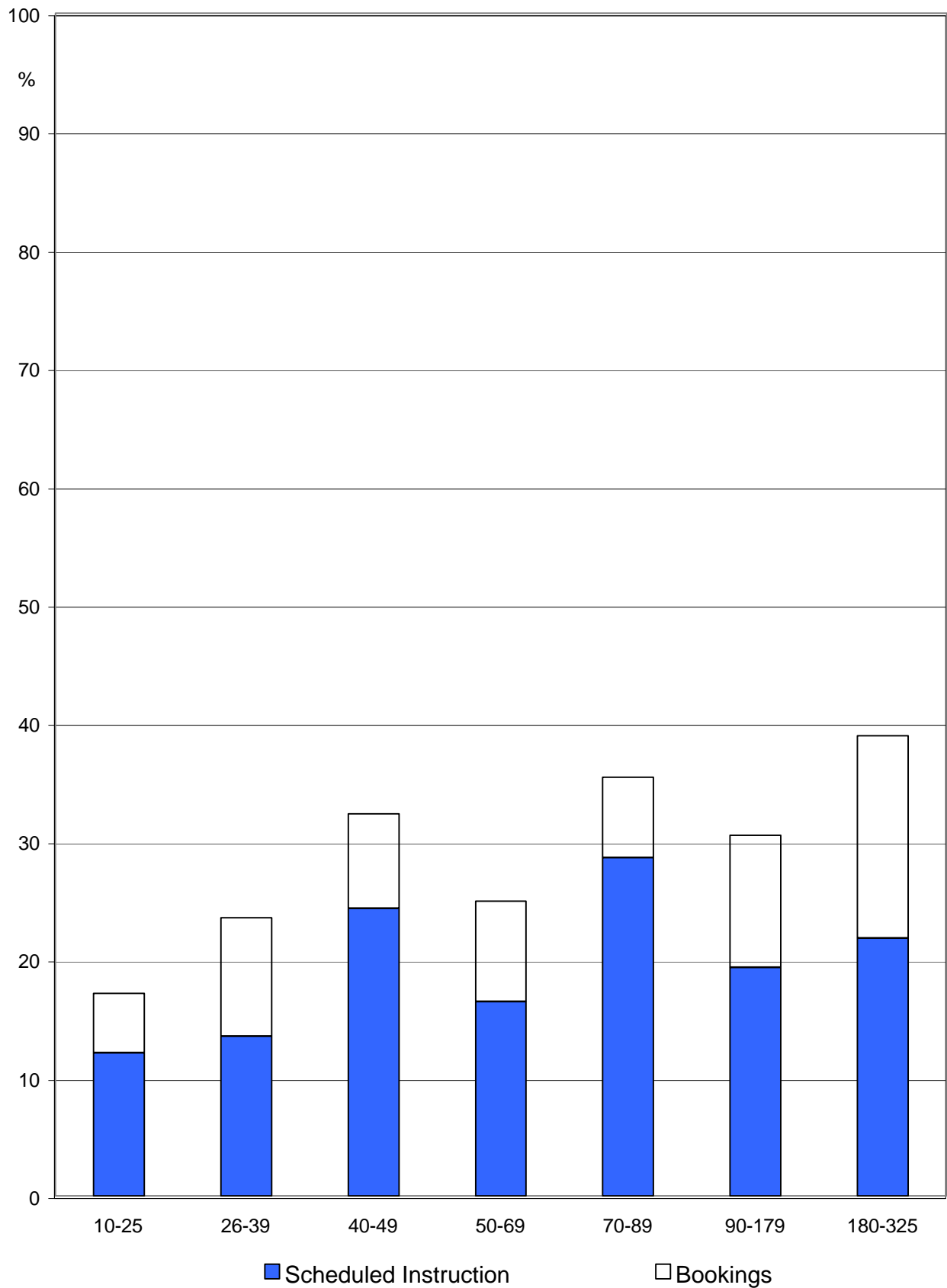


Chart 12
University of Victoria
Average Monday to Friday Seat Utilization
for Scheduled Instruction by Room Capacity

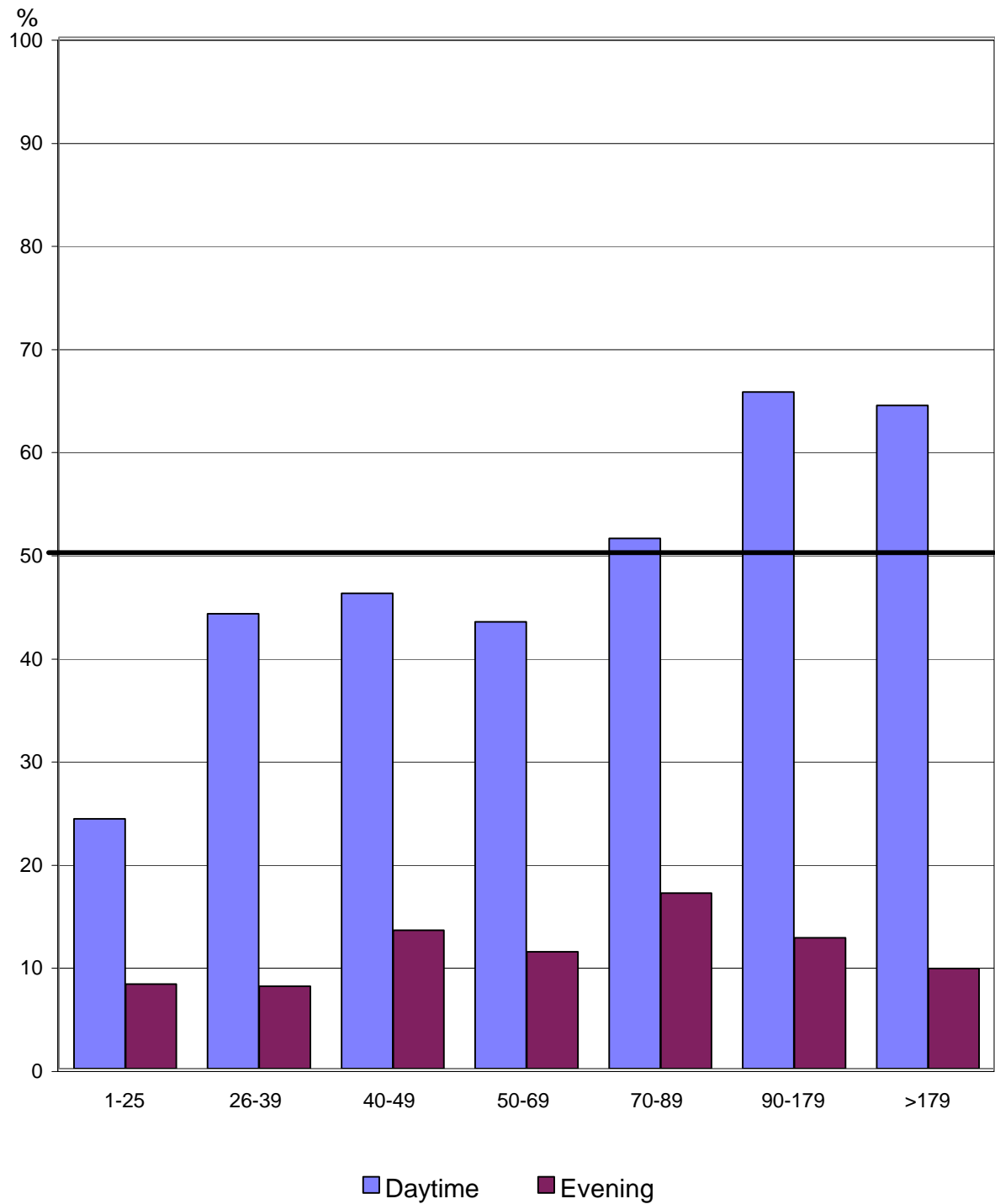


Table 2
2001/02 Monday to Friday Daytime Use by Building

Building	No. of Rooms	No. of Seats	Area in Sq. M.	Sq. M. per Seat	% Sched. Instruction Seat Use	% Sched. Instruction Room Use	% Bookings Room Use	% Total Room Use
Cunningham (CUN)	1	58	77	1.3	35.5	65.0	12.6	77.6
Clearihue (CLE)	46	1,649	2,409	1.5	51.8	60.6	16.7	77.3
Strong (DSB)	13	759	1,185	1.6	54.8	66.4	10.6	77.0
Business & Economics (BEC)	1	30	68	2.3	21.6	57.5	15.9	73.4
Elliott (ELL)	9	703	924	1.3	56.1	65.8	7.3	73.1
Innovative Teaching (CIT)	4	356	536	1.5	45.9	57.8	13.5	71.3
H & SD (HSD)	4	238	357	1.5	48.1	55.3	13.2	68.5
McKinnon (McK)	2	139	198	1.4	37.6	65.0	3.4	68.4
Cornett (COR)	20	1,209	1,627	1.3	54.4	58.9	9.3	68.2
MacLaurin (MAC)	20	1,184	1,653	1.4	49.3	57.6	9.4	67.0
Fine Arts (FIA)	4	119	256	2.1	36.3	44.1	15.0	59.1
Fraser (FRA)	7	593	1,000	1.7	44.1	48.2	1.0	49.2
University Totals	131	7,037	10,288	1.5	50.7	59.5	11.9	71.4

Source: Scheduling data from October 2001 Student and Bookings Databases.

Chart 13
University of Victoria
Average Monday to Friday Daytime
Room Utilization by Building

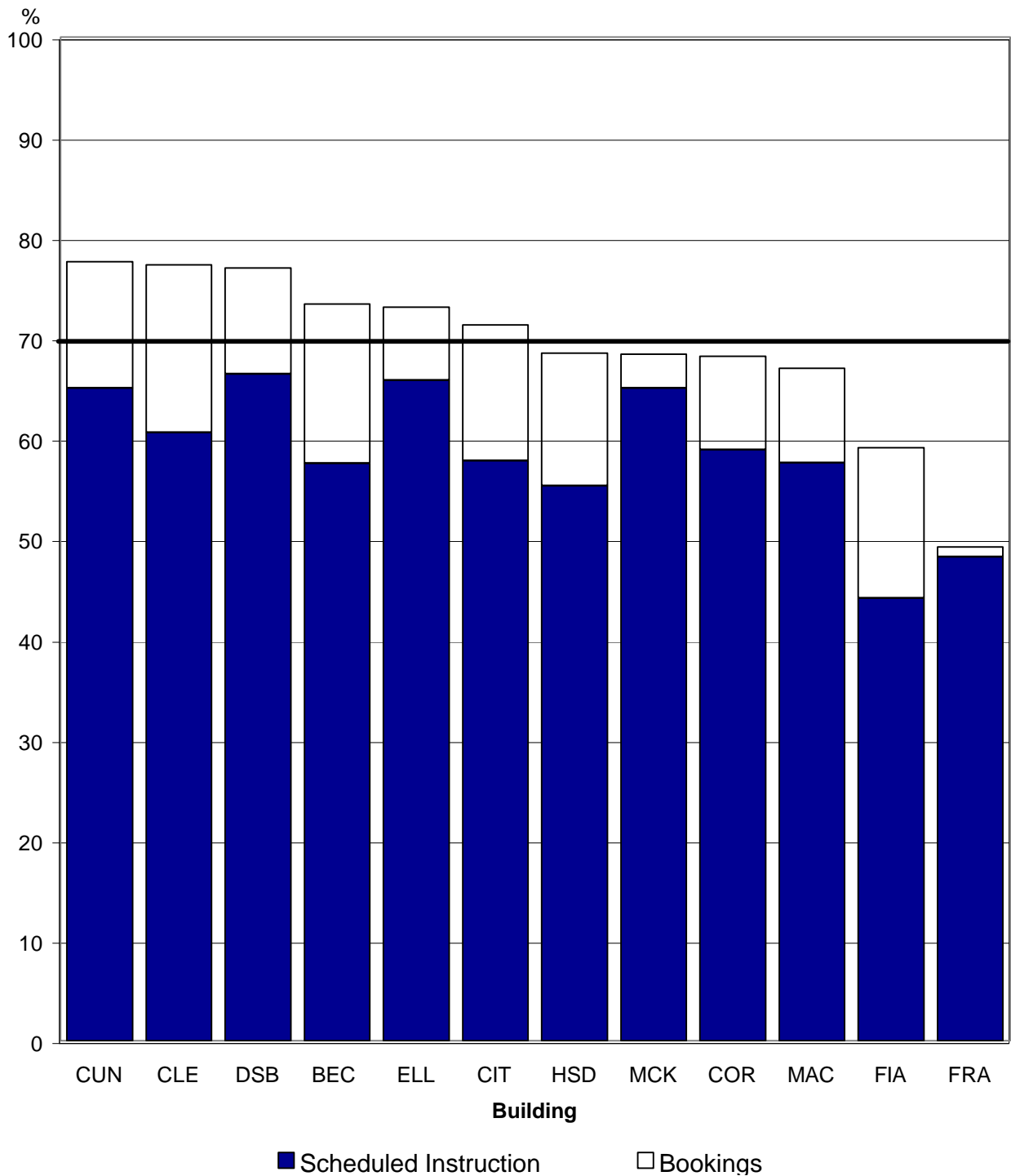


Chart 14
University of Victoria
Average Monday to Friday Evening
Room Utilization by Building

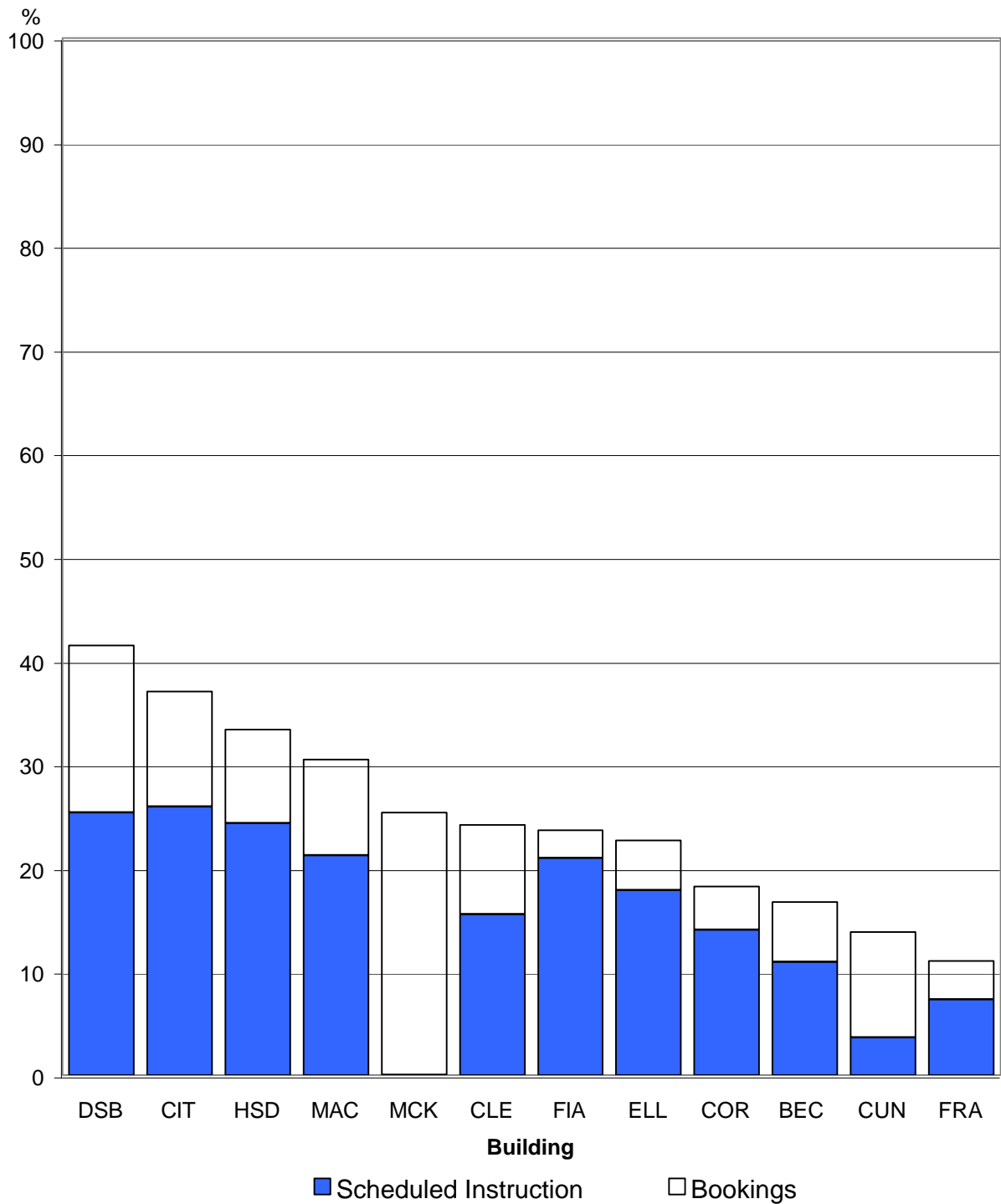


Chart 15
University of Victoria
Average Monday to Friday Seat Utilization
for Scheduled Instruction by Building

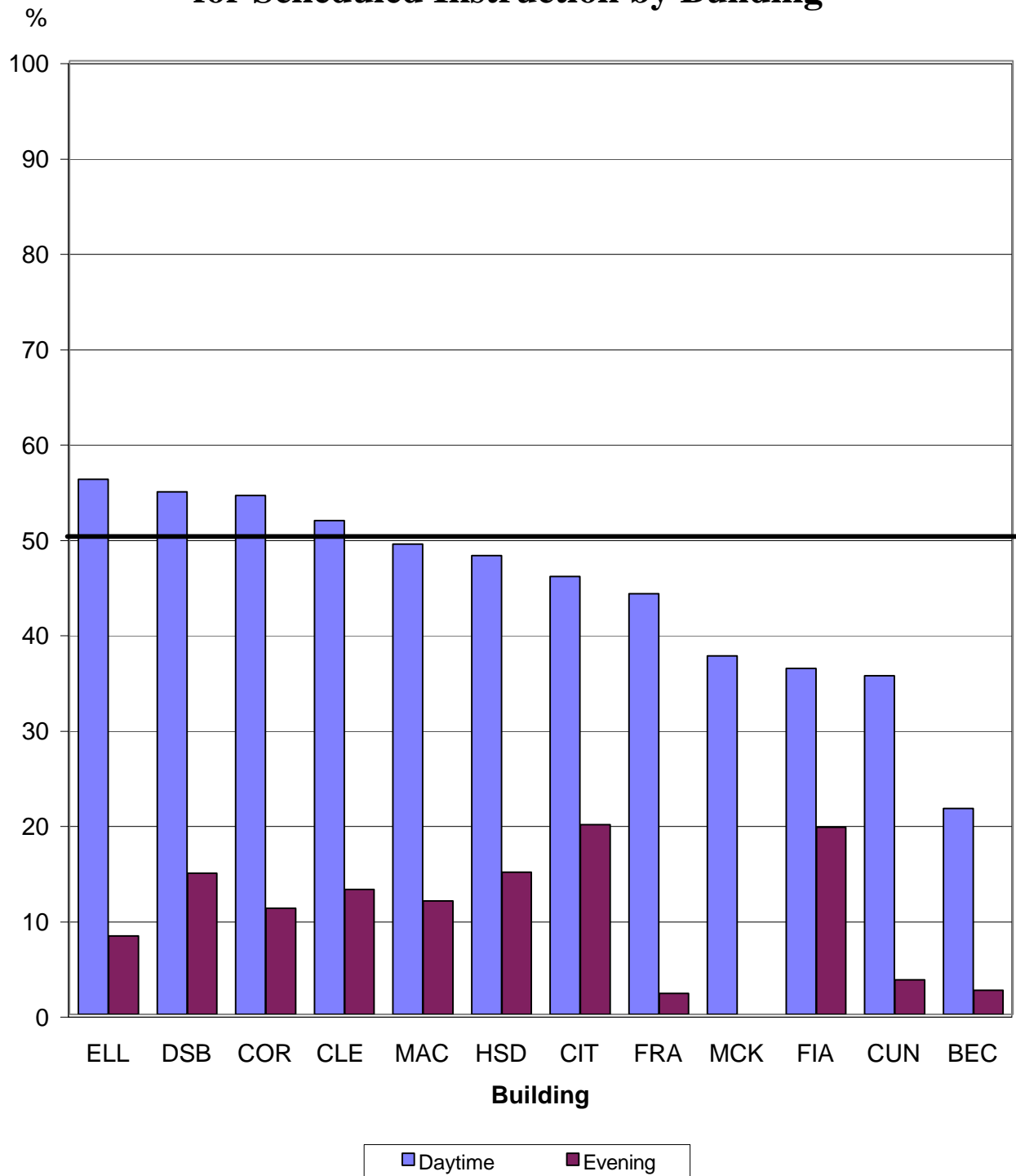


Table 3
2001/02 Historical Monday - Friday Percentage Utilization Summary

Room Utilization

Day	84/85	85/86	86/87...	90/91	91/92	92/93	93/94	94/95	95/96	96/97	97/98...	01/02
Scheduled Instruction	59.4	57.4	59.8	68.6	70.9	66.9	64.5	63.1	67.4	67.6	62.7	59.5
Bookings	2.9	2.7	6.8	8.1	12.8	12.0	11.8	11.7	10.6	10.5	10.2	11.9
Total	62.3	60.1	66.6	76.7	83.7	78.9	76.3	74.8	78.0	78.1	72.9	71.4

Evening

Scheduled Instruction	14.2	13.0	15.9	18.2	18.9	17.4	18.5	18.9	19.0	17.4	15.0	11.9
Bookings	4.8	5.1	7.3	9.6	12.1	14.8	14.1	14.0	13.5	13.2	11.2	8.4
Total	18.9	18.1	23.2	27.8	31.0	32.2	32.6	32.9	32.5	30.6	26.2	20.3

Seat Utilization

(Scheduled Instruction)

Day	45.3	43.6	45.1	51.5	53.2	50.2	47.5	47.6	53.3	55.1	52.3	50.7
Evening	8.0	7.1	8.9	11.0	10.7	9.8	10.9	10.1	11.4	10.6	10.0	11.5

APPENDIX
2001/02 Classroom Inventory

Room Size Interval	Room	No. of Seats	Area in Sq. M.	Sq. M. per Seat	Sched. Instr. % Day Use	Bookings % Day Use	Total % Day Use
10 to 25	CLEB346	12	24.3	2.03	38.7	12.0	50.7
	CLEC116	12	22.1	1.84	55.0	8.4	63.4
	CLEC118	12	22.1	1.84	72.5	3.5	76.0
	CLEB446	14	24.3	1.74	20.0	22.2	42.2
	CLED261	14	25.7	1.84	52.5	7.2	59.7
	CORA132	14	27.5	1.96	27.5	23.6	51.1
	CLEC214	16	26.5	1.66	50.0	8.6	58.6
	FIA108	16	75.4	4.71	0.0	22.7	22.7
	CLED123	18	32.4	1.80	0.0	100.0	100.0
	CLED127	18	31.2	1.73	0.0	100.0	100.0
	CLED129	18	31.6	1.76	0.0	100.0	100.0
	CLED133	18	32.2	1.79	0.0	100.0	100.0
	CORA372	18	37.7	2.09	21.2	12.6	33.8
	CORB130	18	37.3	2.07	20.0	20.4	40.4
	MACD117	18	31.2	1.73	32.5	2.9	35.4
	CLEB215	20	37.6	1.88	45.0	20.3	65.3
	CLEB315	20	39.1	1.96	55.0	13.8	68.8
	CLEB415	20	37.4	1.87	71.2	8.1	79.3
	CLEC316	20	37.5	1.88	53.7	7.4	61.1
	CORA339	20	33.5	1.68	28.7	23.5	52.2
	DSBC114	20	44.9	2.25	62.5	12.6	75.1
	DSBC124	20	44.9	2.25	21.2	34.3	55.5
	FIA209	20	44.0	2.20	50.0	17.3	67.3
	ELL164	22	42.4	1.93	77.5	4.5	82.0
	CLED124	24	41.1	1.71	0.0	100.0	100.0
	CLED128	24	40.8	1.70	75.0	5.1	80.1
	CLED130	24	34.8	1.45	65.0	4.4	69.4
	CLED134	24	40.5	1.69	56.2	6.1	62.3
	ELL161	24	41.9	1.75	57.5	3.5	61.0
	HSDA250	24	52.3	2.18	37.5	27.5	65.0
	MACD281	24	54.7	2.28	45.0	3.6	48.6
	31	586	1,148.9	2.0	38.4	27.0	65.4
26 to 39	CIT 120	26	58.7	2.26	33.7	23.7	57.4
	FRA204	27	67.8	2.51	32.5	0.0	32.5
	FRA205	27	67.7	2.51	20.0	0.0	20.0
	CLEC111	28	35.7	1.28	76.2	2.5	78.7
	CLEC113	28	38.4	1.37	75.0	2.9	77.9
	CLEC115	28	54.8	1.96	72.5	1.5	74.0
	BEC 363	30	68.2	2.27	57.5	15.8	73.3
	CLEB020	30	43.8	1.46	31.2	33.9	65.1
	HSDA260	30	61.7	2.06	50.0	10.3	60.3
	HSDA264	30	60.4	2.01	58.7	3.1	61.8
	MACA166	30	66.7	2.22	58.7	8.4	67.1
	MACA541	30	52.1	1.74	21.2	9.7	30.9
	MACD105	30	42.5	1.42	40.6	8.7	49.3
	CLEA304	32	48.1	1.50	82.5	8.6	91.1
	CLEC108	32	57.1	1.78	72.5	2.2	74.7
	CORA128	32	41.4	1.29	50.0	16.5	66.5
	MCK155	32	61.0	1.91	47.5	5.9	53.4
	FIA104	33	59.5	1.80	62.5	5.6	68.1

APPENDIX
2001/02 Classroom Inventory

Room Size Interval	Room	No. of Seats	Area in Sq. M.	Sq. M. per Seat	Sched. Instr. % Day Use	Bookings % Day Use	Total % Day Use
	CLEA118	34	55.7	1.64	77.5	1.3	78.8
	CLED126	35	58.7	1.68	66.2	6.9	73.1
	CLED131	35	50.2	1.43	62.5	12.6	75.1
	CLED132	35	58.8	1.68	71.2	6.6	77.8
	DSBC126	35	68.0	1.94	73.7	3.0	76.7
	DSBC128	35	67.3	1.92	60.0	12.9	72.9
	DSBC130	35	67.7	1.93	82.5	0.6	83.1
	FRA142	35	80.8	2.31	47.5	0.0	47.5
	MACD107	35	36.7	1.05	58.7	5.2	63.9
	MACD109	35	37.7	1.08	71.2	2.1	73.3
	MACD115	35	47.8	1.37	45.0	16.6	61.6
	CORB145	36	76.4	2.12	70.0	3.8	73.8
	CLEC109	37	53.4	1.44	72.5	4.8	77.3
	CLEA203	38	60.0	1.58	77.5	5.9	83.4
	CLEA204	38	48.0	1.26	75.0	5.8	80.8
	33	1068	1,852.8	1.7	59.2	7.5	66.7
40 to 49	CIT 116	40	116.6	2.92	80.0	5.7	85.7
	CLEA211	40	51.6	1.29	87.5	1.2	88.7
	CORA148	40	84.2	2.11	36.2	20.1	56.3
	DSBC113	40	88.0	2.20	68.7	5.3	74.0
	MACD287	40	91.0	2.28	45.0	19.7	64.7
	CLEC110	42	57.8	1.38	87.5	0.3	87.8
	CLED125	42	50.2	1.20	50.0	7.5	57.5
	CLED267	42	51.7	1.23	82.5	1.5	84.0
	CLEA306	44	64.1	1.46	0.0	3.2	3.2
	MACD283	44	57.8	1.31	40.0	20.0	60.0
	DSBC108	45	70.5	1.57	65.0	7.4	72.4
	MACA168	45	75.9	1.69	63.7	3.7	67.4
	MACD101	45	84.4	1.88	77.5	3.8	81.3
	MACD103	45	84.4	1.88	53.7	11.0	64.7
	MACD114	45	56.0	1.24	48.7	23.8	72.5
	CLEA206	48	64.1	1.34	85.0	1.8	86.8
	DSBC125	49	91.7	1.87	42.5	0.3	42.8
	17	736	1,240.0	1.7	64.9	8.1	73.0
50 to 69	CORB111	50	73.1	1.46	62.5	5.9	68.4
	CORB135	50	118.9	2.38	47.5	8.5	56.0
	FIA103	50	76.6	1.53	63.7	14.3	78.0
	MACD111	50	97.4	1.95	57.5	15.1	72.6
	ELL162	54	72.0	1.33	48.7	14.9	63.6
	FRA157	54	135.8	2.51	45.0	0.0	45.0
	CLEA215	58	77.9	1.34	67.5	1.5	69.0
	CUN146	58	76.6	1.32	65.0	12.5	77.5
	ELL160	59	67.4	1.14	66.2	7.4	73.6
	CORB107	60	67.2	1.12	77.5	1.0	78.5
	DSBC112	60	93.8	1.56	82.5	4.0	86.5
	FRA152	60	134.9	2.25	67.5	0.0	67.5
	MACA169	60	82.0	1.37	60.0	10.4	70.4
	CLEA301	62	74.7	1.20	77.5	1.7	79.2
	CORA229	62	79.6	1.28	57.5	8.3	65.8
	CLEA309	63	88.4	1.40	67.5	1.7	69.2

APPENDIX
2001/02 Classroom Inventory

Room Size Interval	Room	No. of Seats	Area in Sq. M.	Sq. M. per Seat	Sched. Instr. % Day Use	Bookings % Day Use	Total % Day Use
	CLEA303	64	73.4	1.15	75.0	3.4	78.4
	CORA129	65	79.6	1.22	65.0	7.2	72.2
	FRA158	65	168.9	2.60	50.0	5.4	55.4
	ELL060	68	86.7	1.28	37.5	13.5	51.0
	ELL061	68	86.1	1.27	52.5	5.7	58.2
	CLEA201	69	87.5	1.27	73.7	6.9	80.6
	22	1,309.0	1,998.5	1.5	62.2	6.8	69.0
70 to 89	CORA125	70	82.9	1.18	55.0	7.4	62.4
	CORA225	70	82.9	1.18	60.0	7.6	67.6
	MACD110	70	86.8	1.24	82.5	5.4	87.9
	MACD116	70	86.3	1.23	76.2	6.5	82.7
	DSBC122	72	128.8	1.79	52.5	26.2	78.7
	DSBC116	73	128.7	1.76	70.0	20.6	90.6
	CLEA307	74	88.0	1.19	75.0	6.5	81.5
	CLEA311	74	89.8	1.21	82.5	0.6	83.1
	CIT 110	75	52.7	0.70	35.0	19.4	54.4
	DSBC118	75	88.0	1.17	90.0	3.3	93.3
	CLEC112	77	115.7	1.50	82.5	4.0	86.5
	ELL062	80	91.9	1.15	65.0	13.6	78.6
	12	880	1,122.5	1.3	68.9	10.1	79.0
90 to 179	CORA121	90	109.1	1.21	80.0	3.5	83.5
	CLEA207	92	129.7	1.41	82.5	2.2	84.7
	CORA120	94	103.0	1.10	80.0	1.5	81.5
	CORB143	96	117.1	1.22	85.0	2.9	87.9
	MCK150	107	137.2	1.28	82.5	0.9	83.4
	CORA221	108	109.1	1.01	85.0	6.7	91.7
	CORB108	108	133.4	1.24	80.0	2.9	82.9
	CORB112	108	132.8	1.23	90.0	1.3	91.3
	MACD288	110	147.4	1.34	95.0	3.7	98.7
	ELL167	148	198.1	1.34	97.5	0.9	98.4
	HSDA240	154	182.1	1.18	75.0	11.6	86.6
	11	1,215.0	1,499.0	1.2	84.8	3.5	88.3
180 to 325	ELL168	180	237.1	1.32	90.0	1.5	91.5
	DSBC103	200	202.6	1.01	92.5	6.3	98.8
	CIT 105	215	308.4	1.43	82.5	5.1	87.6
	MACA144	323	334.5	1.04	78.7	6.0	84.7
	FRA159	325	344.0	1.06	75.0	1.6	76.6
	5	1,243.0	1,426.6	1.1	83.8	4.1	87.9
Totals	131	7,037.0	10,288.3	1.5	59.5	11.9	71.4