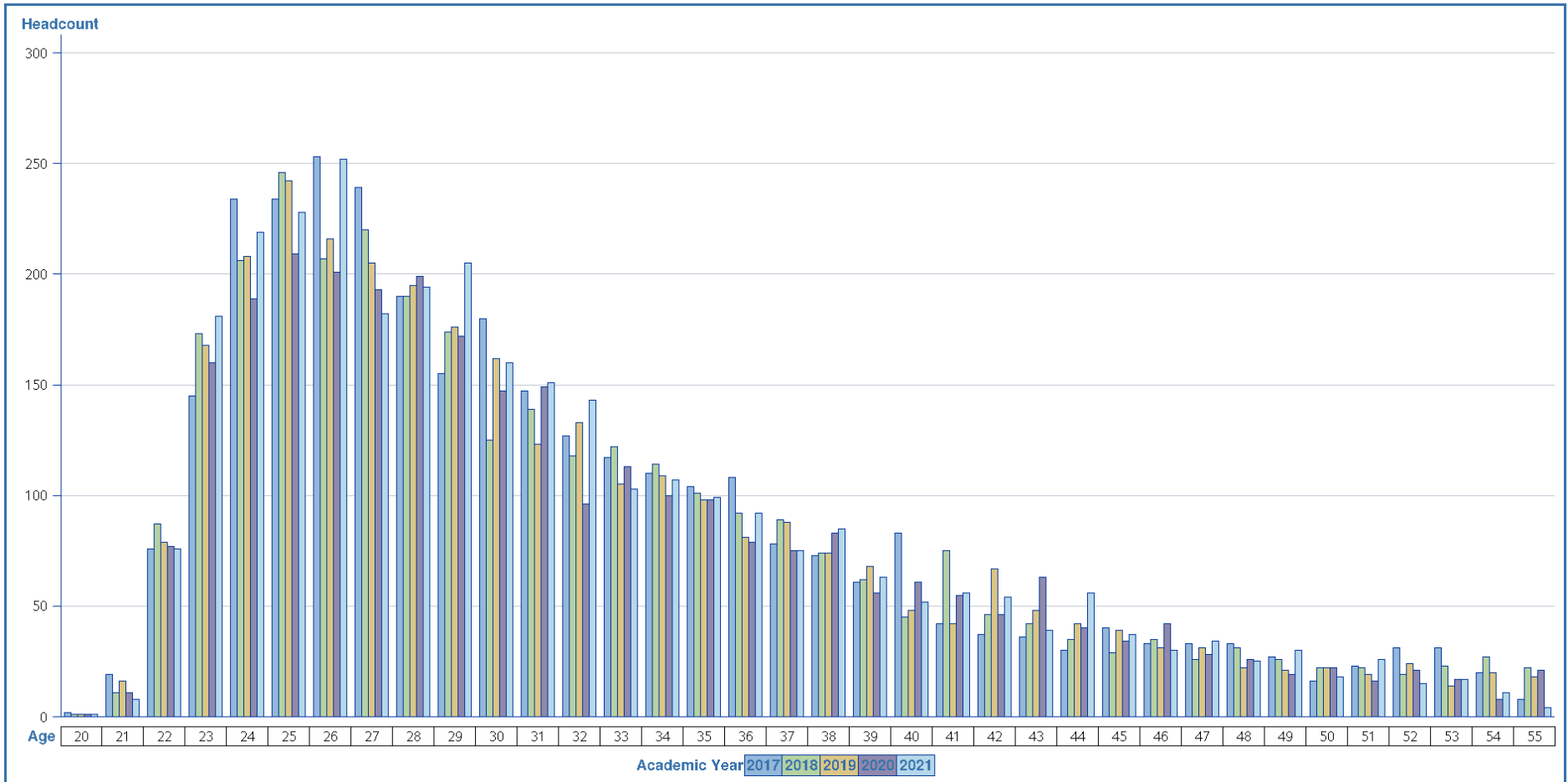


**UVic Factbook - Table 12b: Graduate Headcount by Age (FALL TERMS)**

**Applied filters:** Age equal to 20, 21, 22, 23, 24, 25, 26, 27, 28, 29, 30, 31, 32, 33, 34, 35, 36, 37, 38, 39, 40, 41, 42, 43, 44, 45, 46, 47, 48, 49, 50, 51, 52, 53, 54, 55 **AND** Time 5 years starting with the first year (currently 2021) **AND** Official Snapshot equal to Y **AND** Enrollment Status equal to RGD **AND** Snapshot Group equal to Nov 1st **AND** Grad or Undergrad equal to GR



**Note:**  
 \* Data reflects term - based, unique headcounts per term. Headcounts in this report cannot be "added" together from term to term to produce a "unique annual headcount."  
 \* When using data for official reporting purposes, please verify with Institutional Planning & Analysis.

### UVic Factbook - Table 12b: Graduate Headcount by Age (FALL TERMS)

Applied filters: Time 10 years starting with the first year (currently 2021) AND Snapshot Group equal to Nov 1st AND Official Snapshot equal to Y AND Enrollment Status equal to RGD AND Grad or Undergrad equal to GR

Academic Year	2012	2013	2014	2015	2016	2017	2018	2019	2020	2021
SNAPSHOT_GROUP	Nov 1st	Nov 1st	Nov 1st	Nov 1st	Nov 1st	Nov 1st	Nov 1st	Nov 1st	Nov 1st	Nov 1st
	Headcount	Headcount	Headcount	Headcount	Headcount	Headcount	Headcount	Headcount	Headcount	Headcount
Age										
19	.	.	.	.	1	1	1	.	.	.
20	2	1	1	.	1	2	1	1	1	1
21	19	16	15	16	17	19	11	16	11	8
22	95	87	108	98	63	76	87	79	77	76
23	185	187	169	204	179	145	173	168	160	181
24	228	249	246	224	240	234	206	208	189	219
25	249	234	234	269	253	234	246	242	209	228
26	201	237	214	223	236	253	207	216	201	252
27	205	199	240	208	220	239	220	205	193	182
28	209	210	200	228	187	190	190	195	199	194
29	200	201	194	191	199	155	174	176	172	205
30	165	163	178	179	165	180	125	162	147	160
31	140	148	143	161	144	147	139	123	149	151
32	122	136	138	127	125	127	118	133	96	143
33	125	110	125	130	120	117	122	105	113	103
34	87	104	101	126	119	110	114	109	100	107
35	83	88	99	94	110	104	101	98	98	99
36	74	88	80	86	82	108	92	81	79	92
37	65	77	93	69	74	78	89	88	75	75
38	67	71	57	81	66	73	74	74	83	85
39	50	59	71	52	82	61	62	68	56	63
40	50	44	56	66	54	83	45	48	61	52
41	63	57	38	50	46	42	75	42	55	56
42	57	61	55	31	45	37	46	67	46	54
43	36	55	47	56	35	36	42	48	63	39
44	46	40	40	42	38	30	35	42	40	56
45	32	47	42	38	38	40	29	39	34	37
46	42	32	41	35	31	33	35	31	42	30
47	47	41	34	42	34	33	26	31	28	34
48	41	43	34	28	35	33	31	22	26	25
49	36	50	42	36	24	27	26	21	19	30
50	25	31	44	33	28	16	22	22	22	18
51	21	21	29	39	32	23	22	19	16	26
52	29	22	21	25	31	31	19	24	21	15
53	28	31	17	16	20	31	23	14	17	17

Note:

\* Data reflects term - based, unique headcounts per term. Headcounts in this report cannot be "added" together from term to term to produce a "unique annual headcount."

\* When using data for official reporting purposes, please verify with Institutional Planning & Analysis.

### UVic Factbook - Table 12b: Graduate Headcount by Age (FALL TERMS)

**Applied filters:** Time 10 years starting with the first year (currently 2021) **AND** Snapshot Group equal to Nov 1st **AND** Official Snapshot equal to Y **AND** Enrollment Status equal to RGD **AND** Grad or Undergrad equal to GR

Academic Year	2012	2013	2014	2015	2016	2017	2018	2019	2020	2021
SNAPSHOT_GROUP	Nov 1st	Nov 1st	Nov 1st	Nov 1st	Nov 1st	Nov 1st	Nov 1st	Nov 1st	Nov 1st	Nov 1st
	Headcount	Headcount	Headcount	Headcount	Headcount	Headcount	Headcount	Headcount	Headcount	Headcount
Age										
54	26	27	26	15	13	20	27	20	8	11
55	23	26	23	19	12	8	22	18	21	4
56	10	19	22	18	15	13	10	15	11	18
57	16	13	13	20	17	12	6	9	10	7
58	12	13	10	9	15	15	13	6	7	12
59	14	13	12	11	5	13	10	6	4	6
60	9	13	11	8	10	5	10	11	6	6
61	10	8	15	9	10	10	8	7	11	3
62	8	11	6	9	6	9	9	6	8	9
63	5	4	9	5	9	5	7	7	4	8
64	1	5	4	5	4	4	4	4	4	4
65	4	2	4	4	4	5	2	3	5	2
66	3	3	3	3	2	4	4	2	4	4
67	3	3	2	1	3	3	2	1	1	2
68	.	4	1	2	2	3	2	2	1	1
69	1	.	1	1	1	1	2	.	1	1
70	2	.	1	.	1	1	1	1	.	1
71	.	2	.	1	1	.	1	1	.	.
72	.	.	2	1	1	1	2	1	1	.
73	.	.	.	2	.	.	.	2	1	2
74	.	.	.	.	2	.	1	.	1	.
75	.	.	.	.	.	1	1	.	.	.
76	.	.	.	.	.	.	1	1	.	.
77	1	.	.	.	.	.	.	.	1	.
81	.	.	1	.	.	.	.	.	.	.
<b>Total</b>	<b>3,272</b>	<b>3,406</b>	<b>3,412</b>	<b>3,446</b>	<b>3,307</b>	<b>3,281</b>	<b>3,173</b>	<b>3,140</b>	<b>3,008</b>	<b>3,214</b>

Note:

\* Data reflects term - based, unique headcounts per term. Headcounts in this report cannot be "added" together from term to term to produce a "unique annual headcount."

\* When using data for official reporting purposes, please verify with Institutional Planning & Analysis.