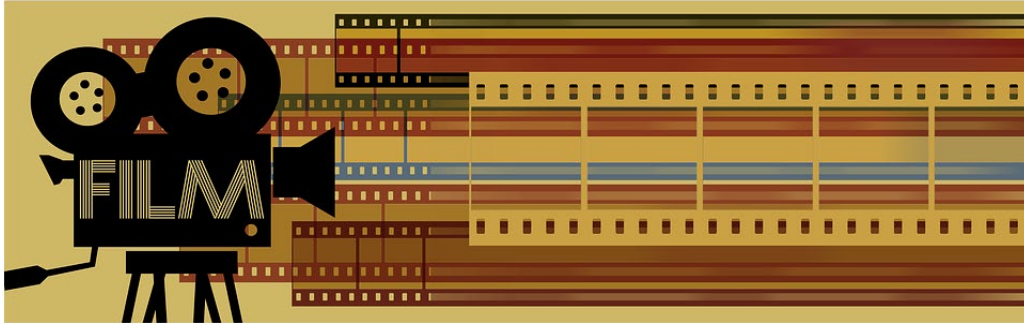


ENGL 360: Special Studies in Shakespeare
Shakespeare on Screen
Spring 2022



<https://pixabay.com/illustrations/banner-header-film-cinema-video-1155437/>

Instructor: Erin Ellerbeck
Email: ele@uvic.ca
Office: Clearihue D336

COURSE DESCRIPTION

Since the early days of cinema, filmmakers have been enthralled by the possibilities afforded by adapting Shakespeare's theatre for the screen. This course will offer a survey of Shakespearean film, concentrating on cinematic versions of five plays: *Romeo and Juliet*, *Macbeth*, *The Taming of the Shrew*, *Henry V*, and *Hamlet*. The films under consideration range from classics (Olivier's *Hamlet*), to cross-cultural adaptations (such as Kurosawa's *Throne of Blood*), to more recent, popular renditions of Shakespearean plots (including Junger's *10 Things I Hate About You*). In addition to examining the plays and films in question, the course will concentrate on topics including: theories of adaptation, anachronism and historical fidelity, acting and staging, and the intercultural appeal of Shakespeare's works. The course will also provide a brief introduction to the scholarly analysis of film. Concepts to be covered include: *mise-en-scène*, editing techniques, uses of the camera, auteur theory, and the historical development of movie-making.

PROPOSED TEXTS

William Shakespeare, *Hamlet*
—, *Henry V*
—, *Macbeth*
—, *Romeo and Juliet*
—, *The Taming of the Shrew*

Films (there may be additional films added to this list with advance notice)

<i>Romeo and Juliet</i> (dir. F. Zeffirelli, 1968)	<i>Macbeth</i> (dir. O. Welles, 1948)
<i>Romeo + Juliet</i> (dir. B. Luhrmann, 1996)	<i>Throne of Blood</i> (dir. A. Kurosawa, 1957)
<i>Henry V</i> (dir. L. Olivier, 1944)	<i>Macbeth</i> (ShakespeaRE-Told, 2005)
<i>Henry V</i> (dir. K. Branagh, 1989)	<i>The Taming of the Shrew</i> (dir. F. Zeffirelli, 1967)
<i>Hamlet</i> (dir. L. Olivier, 1948)	<i>10 Things I Hate About You</i> (dir. G. Junger, 1999)
<i>Hamlet</i> (dir. F. Zeffirelli, 1990)	<i>The Taming of the Shrew</i> (ShakespeaRE-Told,
<i>Hamlet</i> (dir. M. Almerayda, 2000)	2005)

PROPOSED ASSIGNMENTS

-In-class essays and tests.