

FHIR Questionnaires, Maps, and Simplifier

University of Victoria

Lloyd McKenzie
May 17, 2023



Who am I?



- Name: Lloyd McKenzie
- Company: Gevity
- Background:
 - One of FHIR's 3 initial editors
 - Co-chair FHIR Management Group and FHIR-Infrastructure
 - HL7 Fellow
 - Lead for both the ONC and international FHIR SDC projects
 - lloyd@dogwoodhealthconsulting.com

Credit

- These slides include content from Brian Postlethwaite
- With updates by Lloyd McKenzie

Forms in Healthcare

- Assessments (Primary Care)
- Assessments (consumer)
- “Patient Reported Outcomes”
- Case Report Forms
- Gov't/Statutory forms
- Referrals template
- Pre-determination/Claims Forms
- Admission forms
- Satisfaction survey
- Surgical checklists
- Public Health Reporting
- Insurance/Payments
- General data entry

Why use forms?

- AllergyIntolerance
- Condition
- Encounter
- FamilyMemberHistory
- MedicationStatement
- Observation
- Patient
- 100+ other resources

or

- QuestionnaireResponse

Forms provide:

- Tight control over user experience:
 - How questions are phrased
 - What answer choices are permitted
 - What gets asked when (and in what order)
 - User interface ‘appearance’
 - i.e. Consistency in data capture
- Full flexibility in what data is captured and how
- Very simple data model

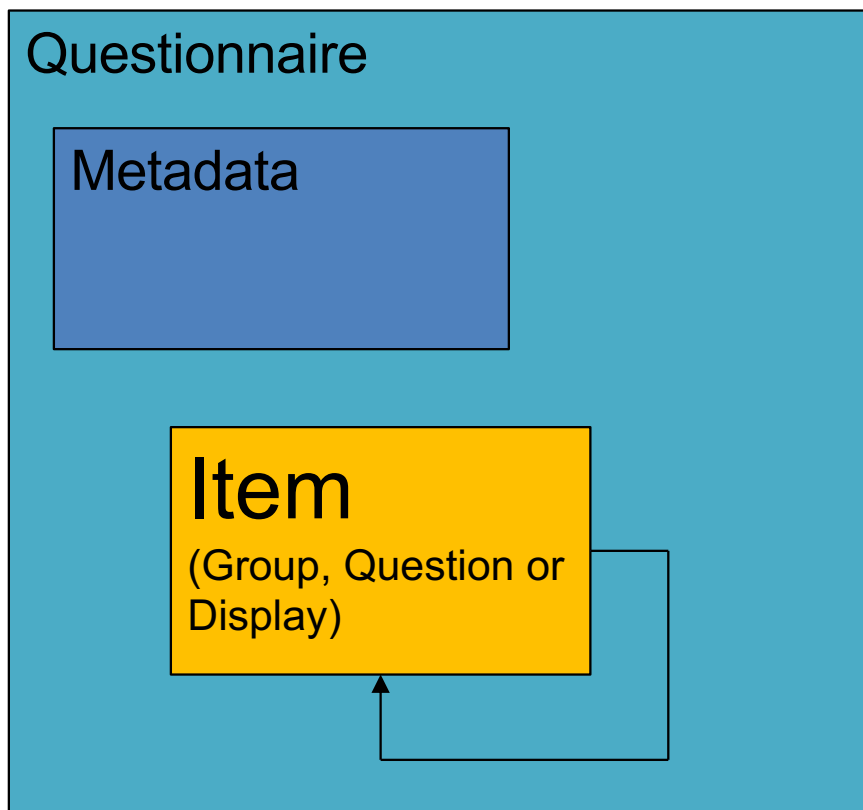
Why use anything other than Forms?

- Questionnaire responses aren't "standard"
 - Inconsistent over time (different form 'versions')
 - Forms change fairly often
 - Inconsistent across organizations
 - Meaning of elements influenced by previous questions
 - "Address" means different things depending where it appears on the form
- In general, can't query QuestionnaireResponse based on what the answers are

Common pattern

- Use forms to capture data
 - Especially when using ‘simple’ clients
 - Possibly use ‘population’ to suck in data from existing records
- Extract data from form into other resources
- Use Provenance to tracker where the data came from
- Primarily pass around other resources
 - Can pass around Provenance and original QuestionnaireResponse if needed

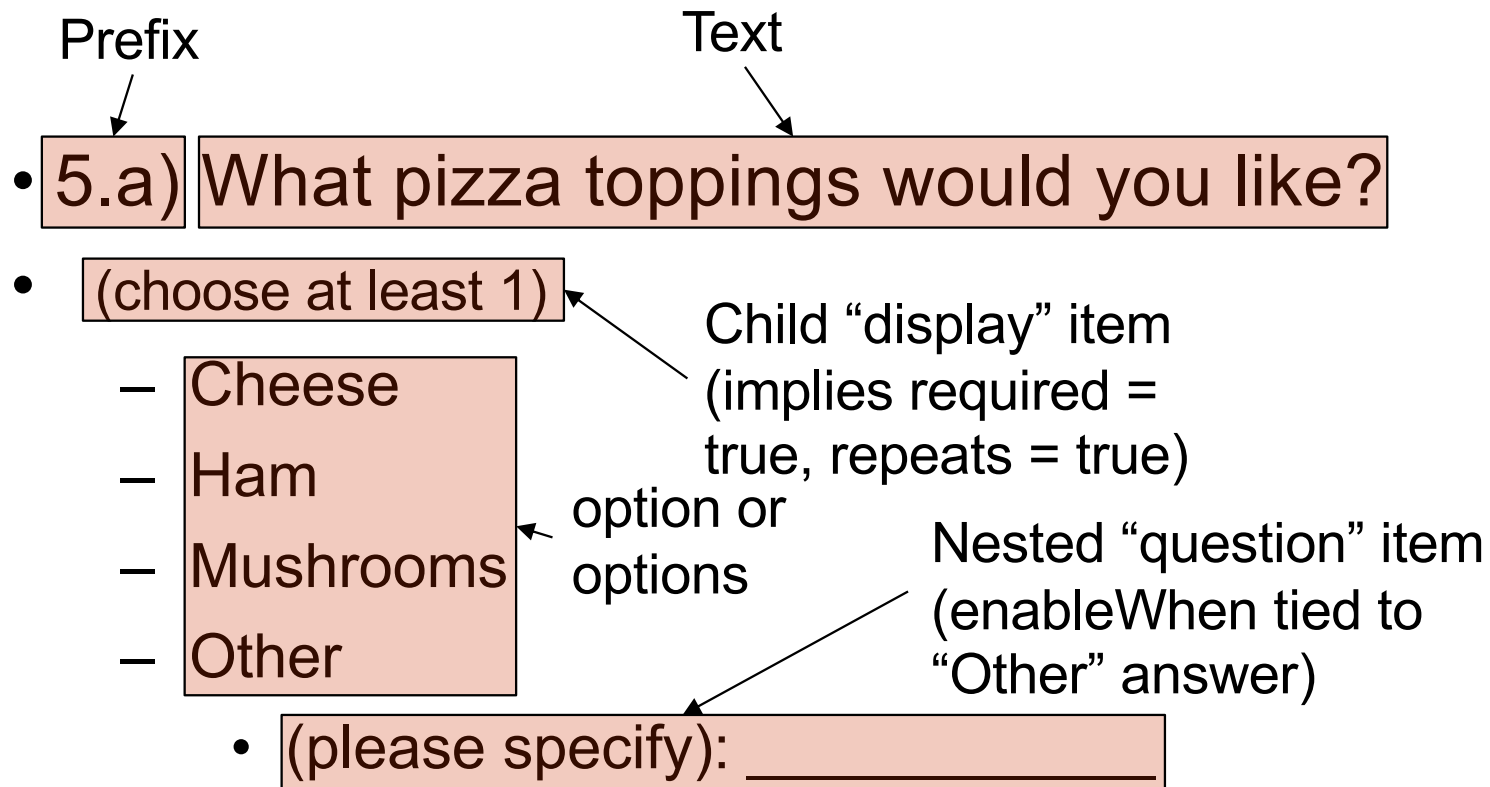
Structure of a Questionnaire



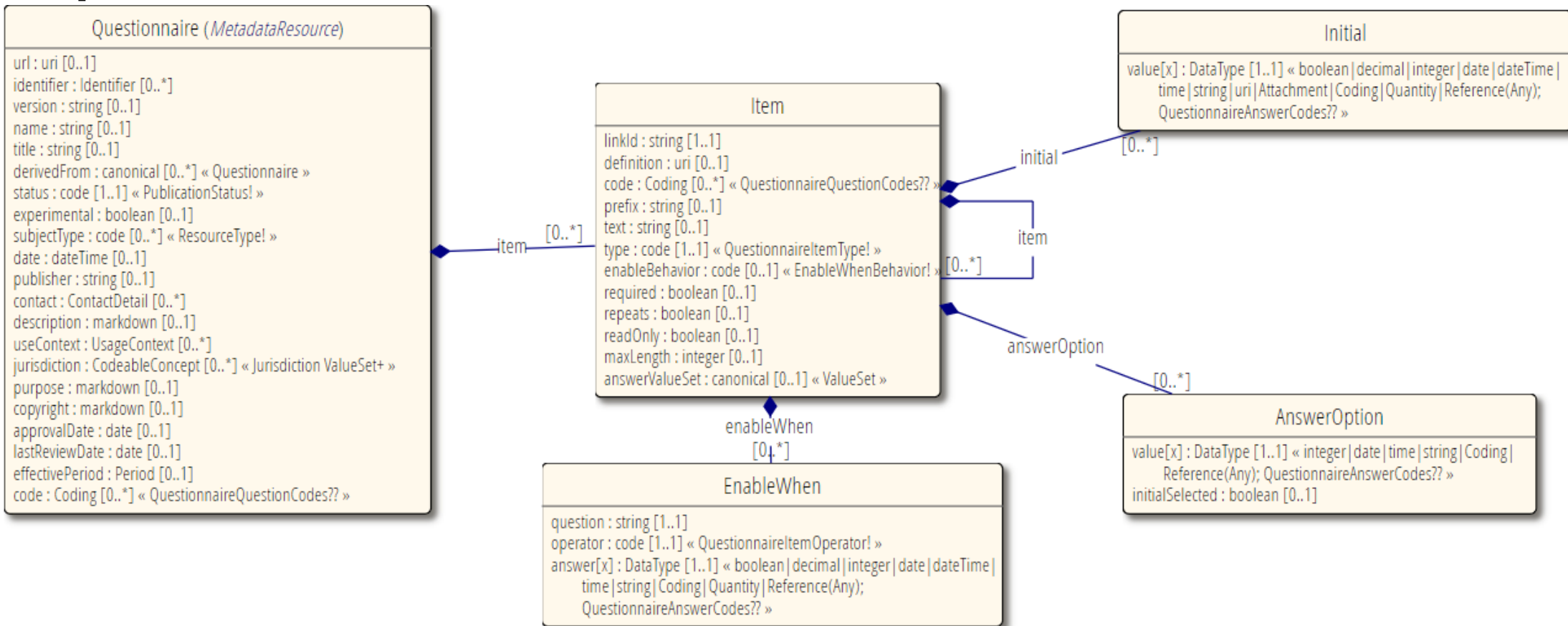
Types of item

- Groups
 - Organize content of questionnaire
 - Must have children
 - Can't have answers
- Questions
 - Solicit information
 - Must have answers (but can be optional)
- Display
 - Additional text, no children, no answers

Anatomy of a Question



Questionnaire



Linking Questionnaire to QuestionnaireResponse

Questionnaire

```
<item>
  <linkId value="G1"/>
  <text value="Test questions"/>
  <type value="group"/>
  <repeats value="true"/>
  <item>
    <linkId value="Q1"/>
    <text value="What is your name?"/>
    <type value="string"/>
  </item>
  <item>
    <linkId value="Q2"/>
    <text value="What is your quest?"/>
    <type value="string"/>
  </item>
  <item>
    <linkId value="Q3"/>
    <text value="What is your favorite colour?"/>
    <type value="string"/>
  </item>
</item>
```

QuestionnaireResponse

```
<item>
  <linkId value="G1"/>
  <text value="Test questions"/>
  <item>
    <linkId value="Q1"/>
    <text value="What is your name?"/>
    <answer>
      <valueString value="Sir Lancelot of Camelot"/>
    </answer>
  </item>
  <!-- ... -->
</item>
<item>
  <linkId value="G1"/>
  <text value="Test questions"/>
  <item>
    <linkId value="Q1"/>
    <text value="What is your name?"/>
    <answer>
      <valueString value="Sir Robin of Camelot"/>
    </answer>
  </item>
  <!-- ... -->
</item>
```

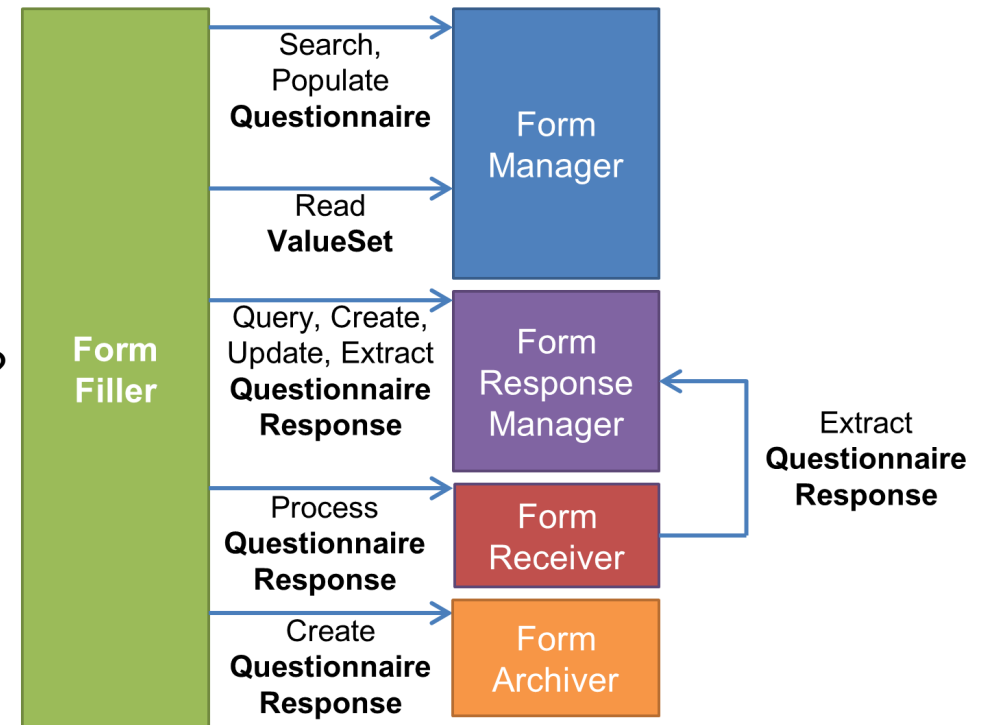
STRUCTURED DATA CAPTURE

What is Structured Data Capture (SDC)?

- Standardize/enhance capabilities of FHIR Questionnaires:
 - Workflow
 - Complex form rendering
 - Complex form behavior
 - Automatically populating forms
 - Automatically extracting data from completed forms
 - Adaptive forms

Complex workflow

- How do you find a form?
- How do you retrieve allowed values?
- How do you manage form completion?
- How do you submit a form?
- How do you ask someone to complete a form?
- How do you track whether they've filled it out?
- How do you derive one form from another?



Complex form rendering

- Have questions/instructions render the way you want
 - Pick at least one green option and no more than one red option
 - How are you feeling today? 😊 is “great”, 😞 is “horrible”
- Hide or mark certain questions as ‘read only’ (e.g. calculated score)
- Should questions be a grid or table? Should a question use a dropdown? Checkboxes? Radio buttons?
 - And within that, how wide should columns be, what should column headings be, what should the steps on a slider be, etc.
- Additional display guidance.
 - Social Security number:

Complex form behavior

- EnableWhen questions based on expressions
 - If the total score from group 1 > 30, then display these additional cardiology questions
- EnableWhen options
 - Only display “pregnancy” in “reason for absence” if gender = F
- Constraints
 - Can have a maximum of 2 questions with an answer of “most preferred”

Complex form behavior (cont'd)

- Constrain values
 - 5-10 characters
 - January 1-March 30
 - YYYY-MM
 - Must be a JPG or PNG, < 500KB
 - Must be lb or kg
 - Minimum 3 choices, maximum of 5

Complex form behavior (cont'd)

- Constrain references
 - Answer must be Condition or “Diagnosis Observation”
 - Possible answers are:
Observation?patient=\$patient.id&code=12345-5&...
 - “Click here to create a new value” (launches new questionnaire)

Complex form behavior (cont'd)

- Perform calculations (e.g. scores)
 - Launch context – patient, encounter, etc.
 - Use CQL or FHIRPath for calculations
 - Variables, initial expressions
- Create forms constructed from other forms

Pre-population

- Requires:
 - context/source
 - mapping
 - processing engine
 - Knowledge of source structures (particularly profiled scope)

Pre-population

- Current \$populate Options:
 - Observation based
 - FHIRPath based
 - StructureMap based

Pre-population – Observation based



- Low flexibility of Questionnaire structure in mapping
- Source
 - Context may be provided in parameter, or SMART
 - Item.code for LOINC/SNOMED/other to search
 - Extension questionnaire-observationLinkPeriod to define range to check for last observation to read
- Mapping
 - Item.code for LOINC/SNOMED/other for the values to be extracted from the observation
 - Groups can be used for extracting observation components
 - If the system understands that codings like LOINC 21112-8 is patient.birthDate, then it may extract data like this also

```

<item>
<extension url="http://hl7.org/fhir/StructureDefinition/questionnaire-observationLinkPeriod">
  <valueDuration>
    <value value="3"/>
    <system value="http://unitsofmeasure.org"/>
    <code value="mo"/>
  </valueDuration>
</extension>
<linkId value="code-pop-demo"/>
<code>
  <system value="http://loinc.org"/>
  <code value="29463-7"/>
  <display value="Body weight"/>
</code>
<code>
  <system value="http://loinc.org"/>
  <code value="3141-9"/>
  <display value="Body weight Measured"/>
</code>
<code>
  <system value="http://loinc.org"/>
  <code value="8341-0"/>
  <display value="Dry body weight Measured"/>
</code>
<text value="What is your current weight?"/>
<type value="quantity"/>

```

During the pre-population stage, this is the query that could be produced to extract the data:

(assuming that the date of 3 months ago was 2020-06-02)

[base]?Observation?subject=[questionnaire response subject id]

&code=http%3A//loinc.org|29463-7,http%3A//loinc.org|3141-9, http%3A//loinc.org|8341-0

&status=completed

&date=ge2020-06-02

&_sort=-date

&_count=1

</item>

Pre-population – FHIRPath based

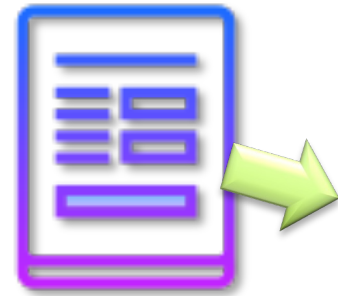
- Source
 - Context may be provided in parameter, or SMART
 - extension questionnaire-launchContext
 - Produces a bundle for processing
- Mapping
 - FHIR Path expressions for each property to map
 - extension “questionnaire-itemContext”
 - Extension “sdc-questionnaire-initialExpression”
 - Leverage variables to assist in calculations
 - Extension “variable” uses Expression datatype
- More Flexible, requires knowledge of FHIRPath and FHIR Queries to create the mappings



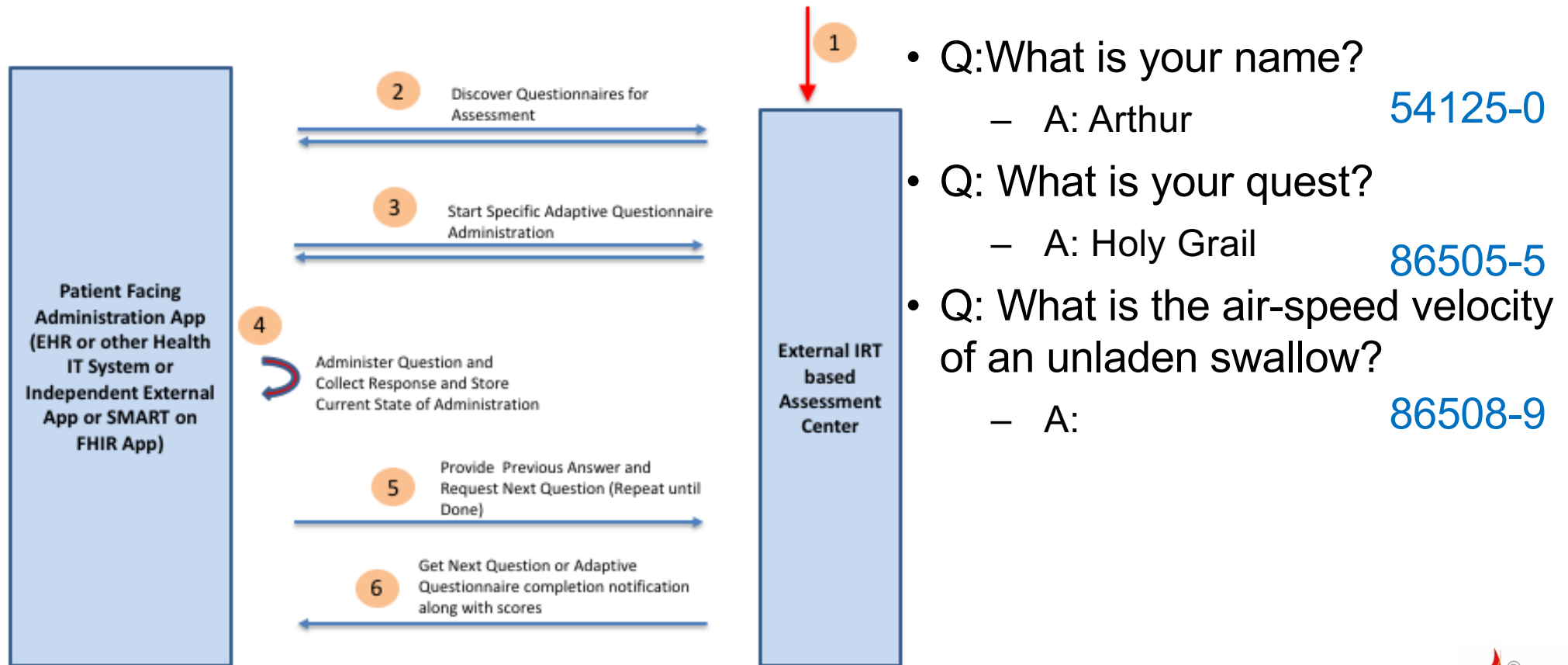
Conversion/Mapping to other resources

<http://build.fhir.org/ig/HL7/sdc/extraction.html>

- Observation based extraction
 - Item.code for LOINC/SNOMED/other codings for the values to be extracted
 - groups can create components in the observation too
- Definition based extraction (<http://hl7.org/fhir/questionnaire.html#2.38.5.4>)
 - item.definition directly links to an element in a structure definition
e.g. <http://hl7.org/fhir/StructureDefinition/Observation#Observation.comment>
 - Can link each item, supporting repeating items!
 - Caveat: can't do complex split/join/calculations, and shape of questionnaire must closely match StructureDefinition
- StructureMap based extraction
 - Explicit mappings for every property
 - Uses the FHIR mapping language, can be very complex but flexible, it is a transform language
 - Use the [questionnaire-targetStructureMap](#) extension on the questionnaire



Adaptive forms



- Q: What is your name?
– A: Arthur **54125-0**
- Q: What is your quest?
– A: Holy Grail **86505-5**
- Q: What is the air-speed velocity of an unladen swallow?
– A: **86508-9**



SIMPLIFIER.NET

Where FHIR profiles are published

Search FHIR profiles, extensions, valuesets and more



6811 Projects 28859 Profiles 224625 Resources



FHIR PROJECTS AROUND THE WORLD

Questions / Discussion

- lloyd@dogwoodhealthconsulting.com
- <http://hl7.org/fhir/uv/sdc>
- Or, better yet, include the community and ask/discuss on <http://chat.fhir.org>

