

# Sign No. 4 Vehicular - Map Directory Kiosk

Sheet List	
Sheet Number	Sheet Name
01	title sheet and drawing list
02	typography, colours and pictograms
03	sign design - overview
04	sign design - overview - cont.
05	sign design - graphic design details
06	sign construction - cross section
07	sign construction - sections
08	sign construction - canopy plan and details (anodized)
09	sign construction - canopy plan and details (painted)
10	sign construction - details
11	general notes - structural and electrical

project: Campus Wayfinding  
 number: FM 09-8567  
 issue date: Jan 31, 2012

sign: Sign No. 4 -Vehicular Map Directory Kiosk  
 sheet name: title sheet and drawing list  
 scale: as noted

sheet number: **01**

**core colours**



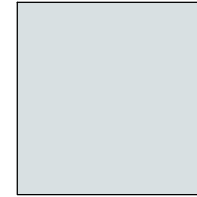
clear anodized coating



PANTONE 185 C  
pinstrip, arrows



PANTONE 426 C  
text



PANTEONE 7541 C  
background, UVic Logo



gary oak motif - digital file is to be delivered  
by University of Victoria

**samples of typeface family**

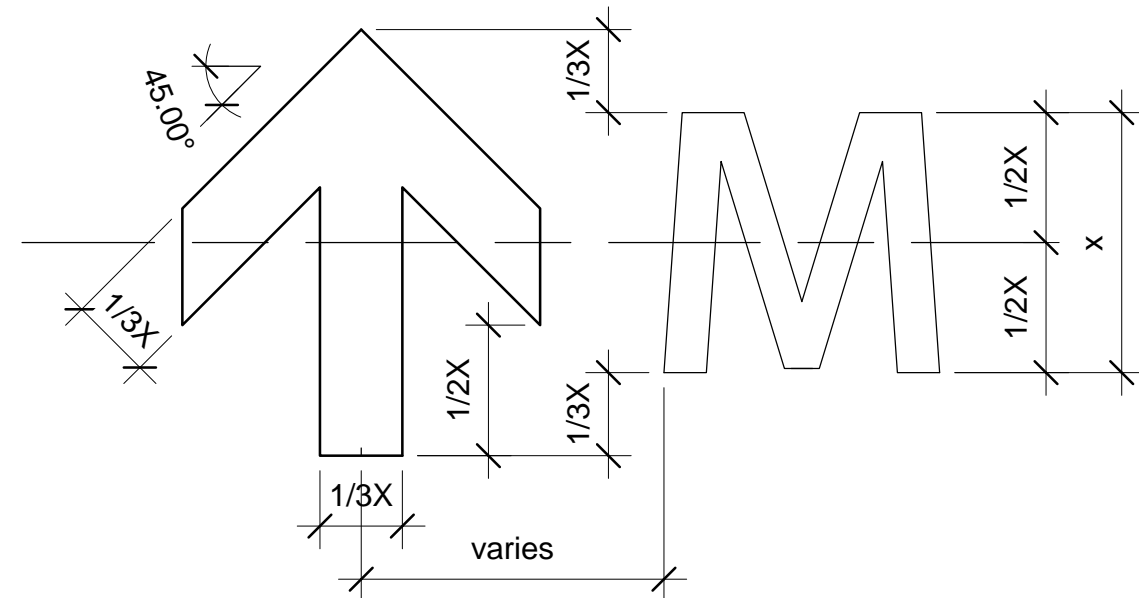
Myriad Pro Semi Bold

ABCDEFGHIJKLMNOPQRSTUVWXYZ

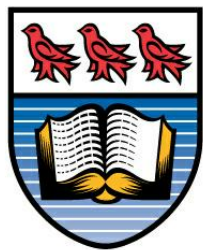
abcdefghijklmnopqrstuvwxyz

1234567890

**arrow style and arrow size in relation to text height**



**University of Victoria Logo, horizontal standard**



University  
of Victoria

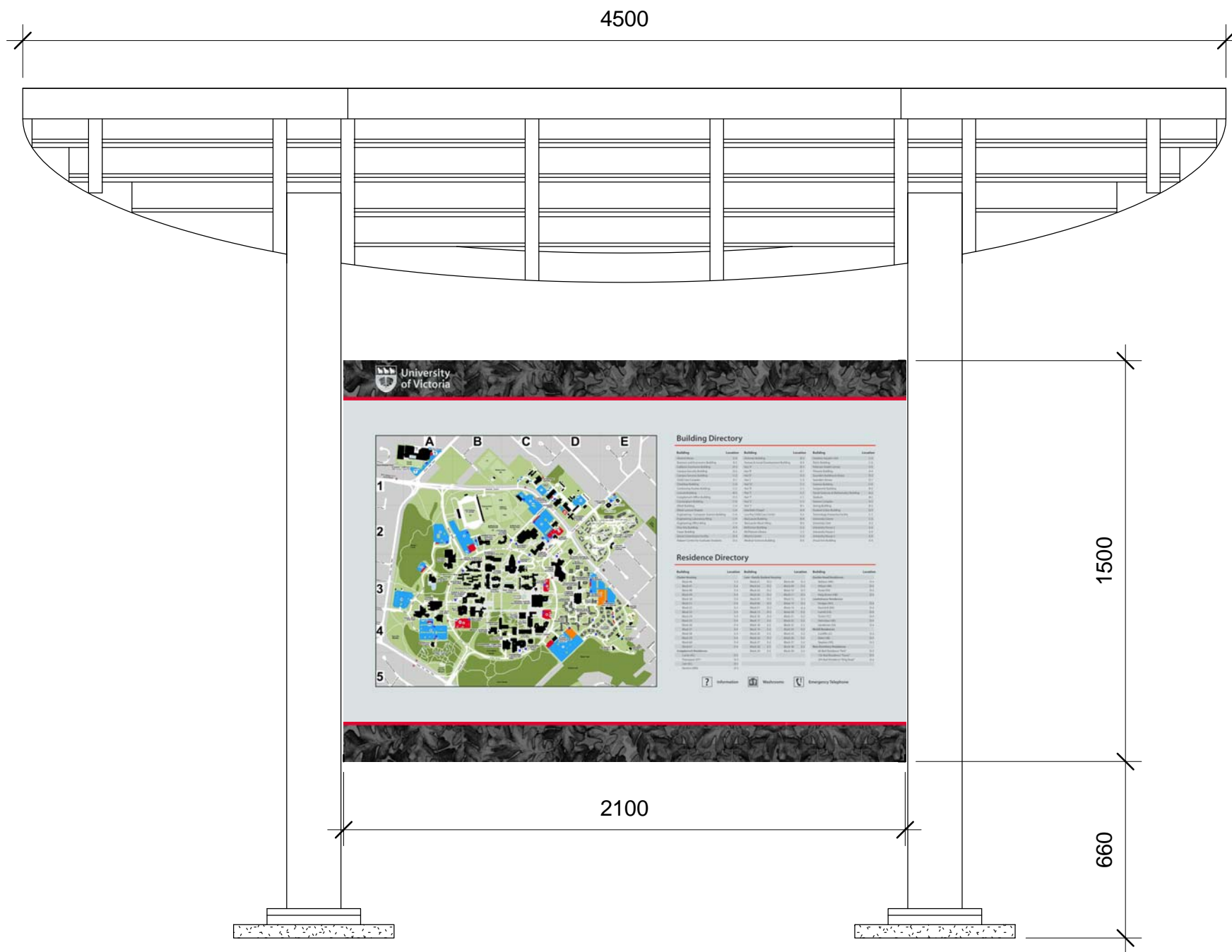


University  
of Victoria

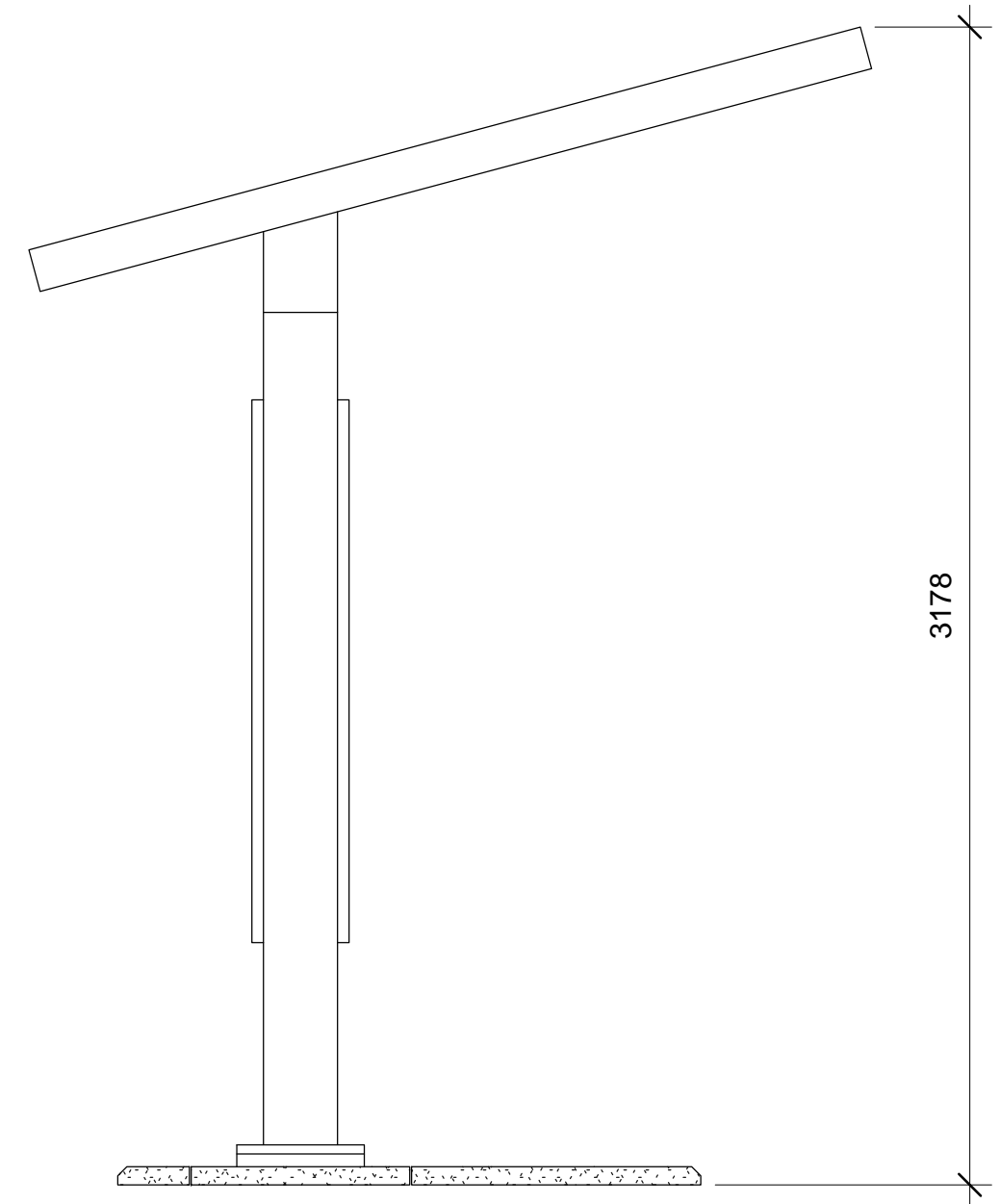


University  
of Victoria





**front elevation scale 1:20**

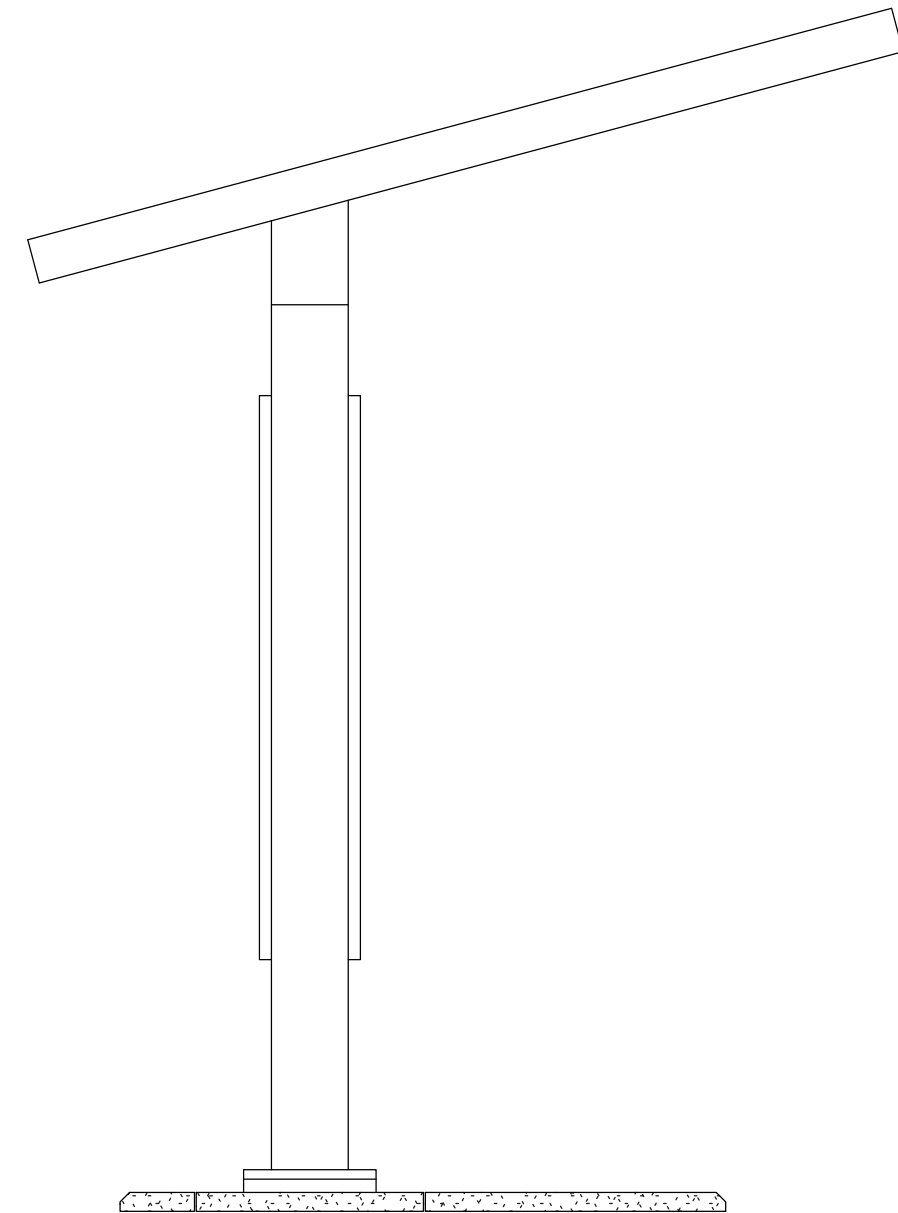


**side elevation scale 1:20**





**back elevation scale 1:20**



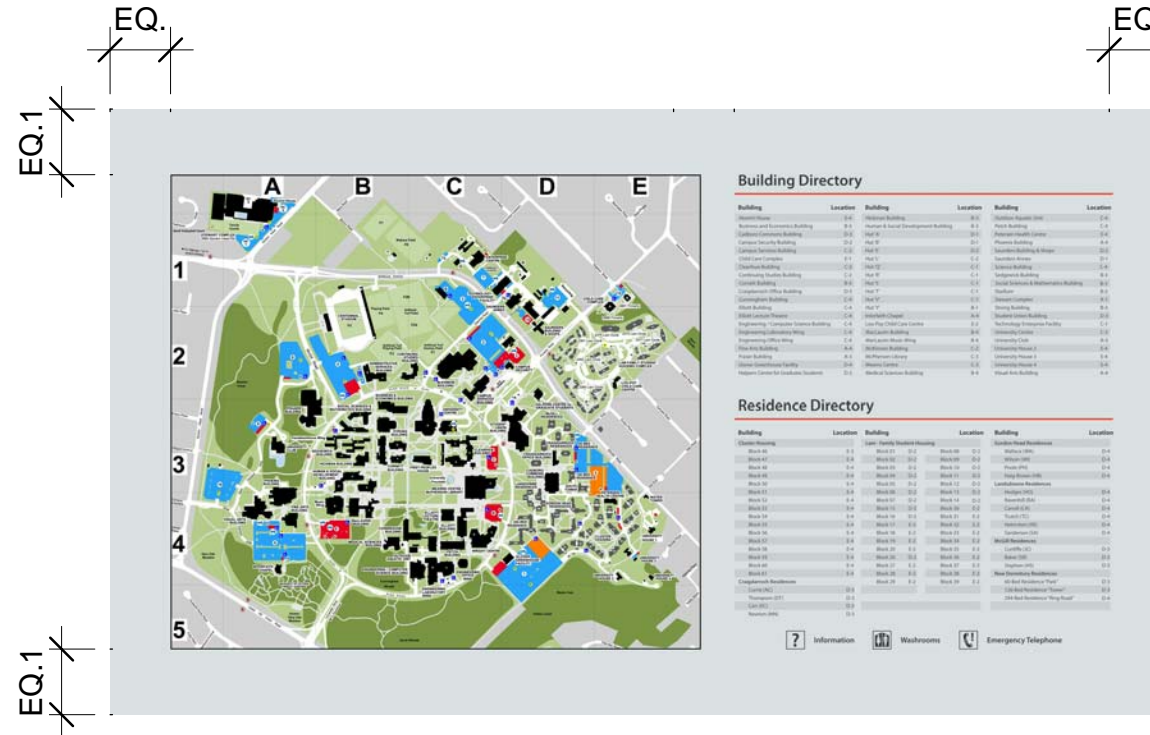
**side elevation scale 1:20**



Description  
Digitally printed vinyl protected with anti-graffiti, optically clear overlamine  
Aluminum panel size (one piece):  
2100 mm x 150 mm x 6.4 mm  
Vinyl: 3M IJ180, MPI 2005 or equivalent  
Overlamine: 3M 8914, Avery DOL 6060 or equivalent.



graphic panel shown for reference only.  
image to be provided  
in digital format by University of Victoria



non-glare clear acrylic panel,  
digitally printed-on vinyl, diffusion layer.  
Acrylic panel size: 2100 mm x 1200 mm x 6.4 mm

directory map to be provided in digital format  
by University of Victoria (typ)

← type size: 30.65pt

← type size: 90pt

Non-glare clear acrylic: 2100 mm x 1200 mm x 6.4 mm  
Plaskolite OPTIX Abrasion Resistant Non-Glare  
or equivalent.

First surface prints:  
Vinyl: 3M IJ180, MPI 2005 or equivalent  
Overlamine: 3M 8914, Avery DOL 6060 or equivalent.

2nd surface prints:  
CAV-50 reverse print - i/w/i (2nd surface)  
Overlamine: 3M 8914, Avery DOL 6060  
or equivalent (first surface)

- 1) One piece vinyl to be printed on, installed as per manufacturer's recommendations.
- 2) Use compatible UV inks and overlaminates as recommended by manufacturer
- 3) Wrap vinyl and overlamine over the edges of the aluminum panel.

If single sided unit then the back panels to be  
one 2400mm x 750mm, 6.4mm thick aluminum panel  
with clear anodized coating.



Bottom Panel - size and material  
similar to Top Panel

**main back panel scale 1:20**

**front scale 1:20**

Refer to Adobe Photoshop files  
for detailed sample layout

project: Campus Wayfinding  
number: FM 09-8567  
issue date: Jan 31, 2012

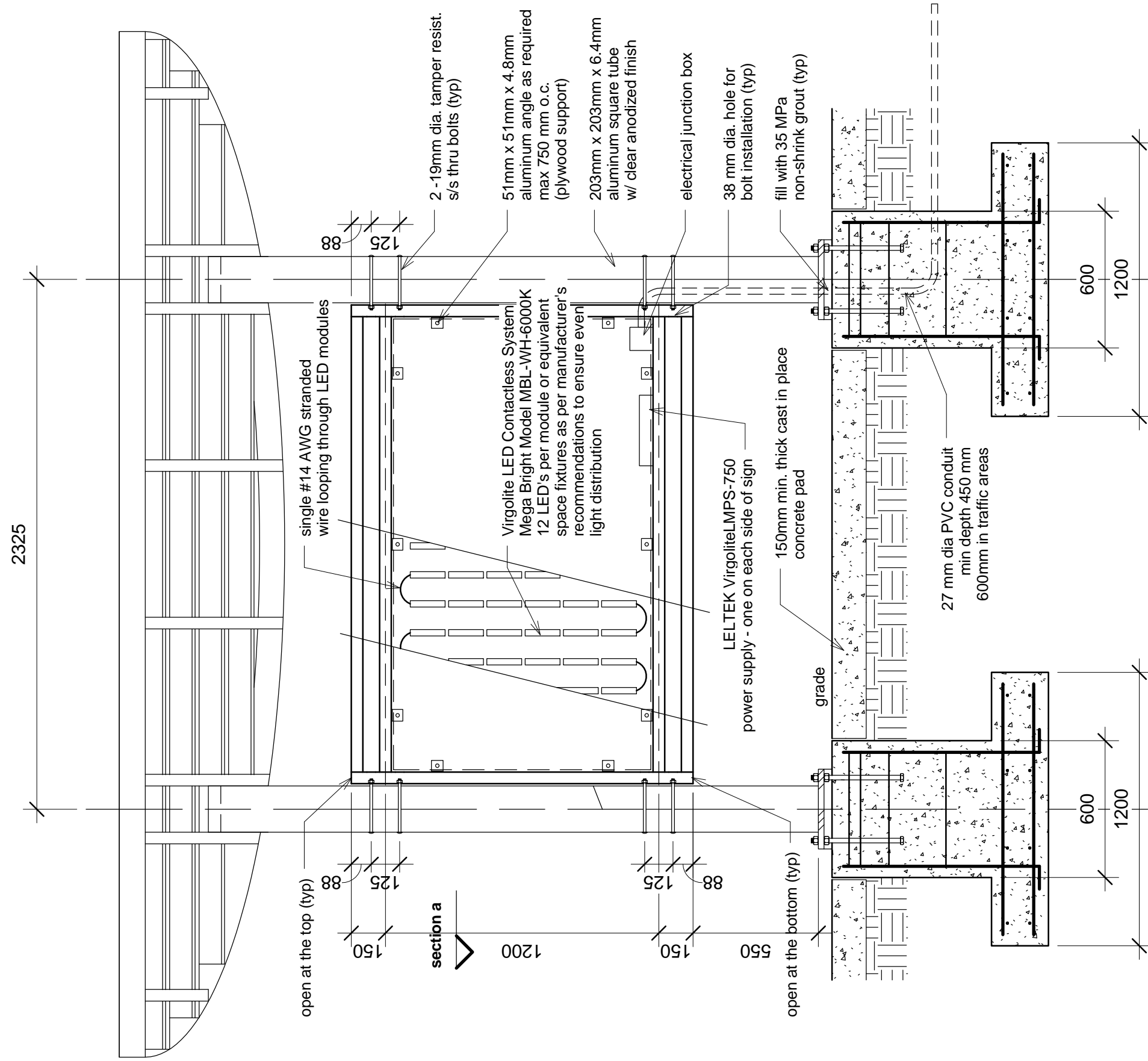
sign: Sign No. 4 -Vehicular Map Directory Kiosk  
sheet name: sign design - graphic design details  
scale: as noted

sheet  
number:

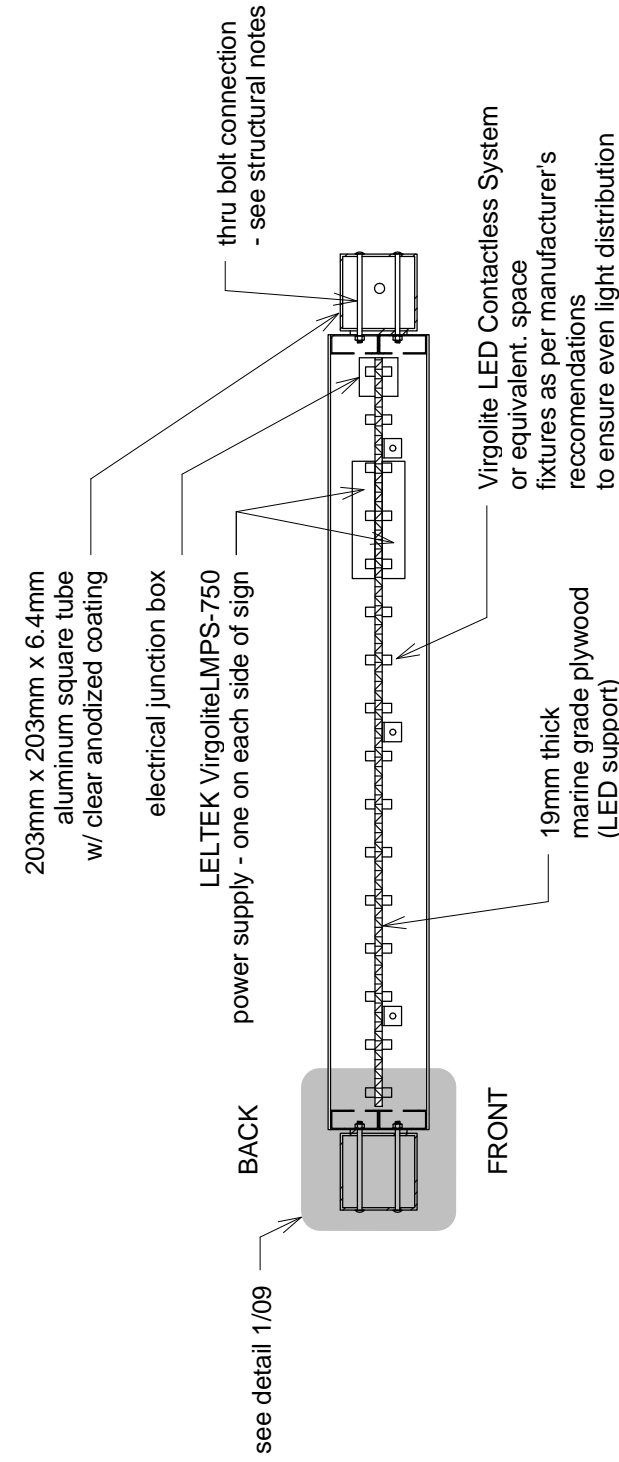
**05**





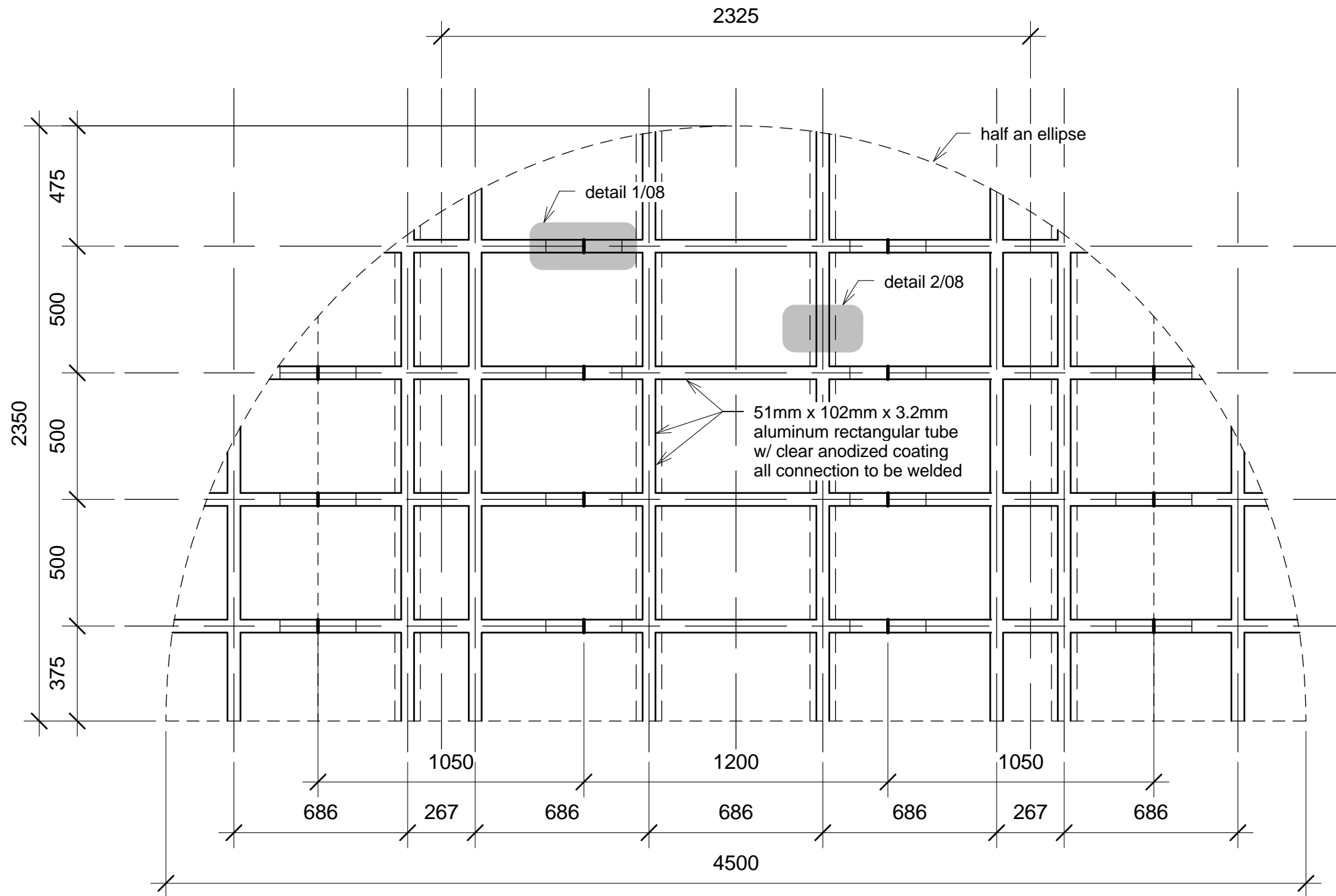


long section scale 1:20



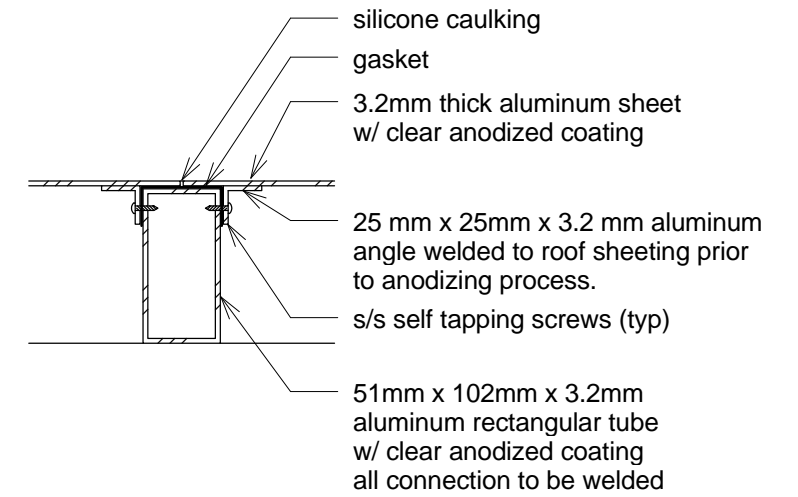
General Note:  
 Manufacturer to verify all diemnsions prior to sign fabrication. All discrepancies should be reported to the Architect.

section a scale 1:20

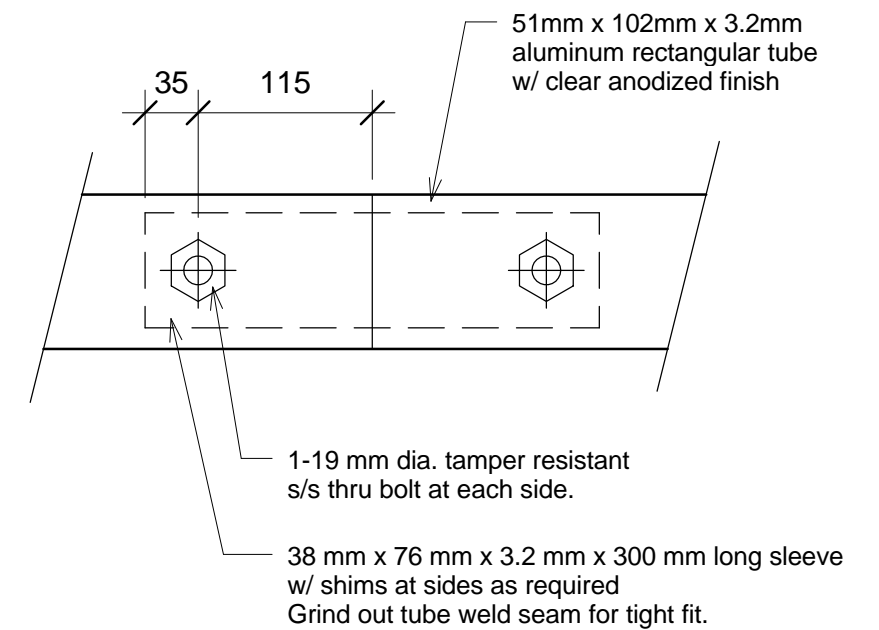


General Note:  
 Manufacturer to verify all dimensions prior to sign fabrication. All discrepancies should be reported to the Architect.

**canopy (anodized finish option)**  
**plan scale 1:20**



**detail 2 scale 1:5**



**detail 1 (side view) scale 1:5**

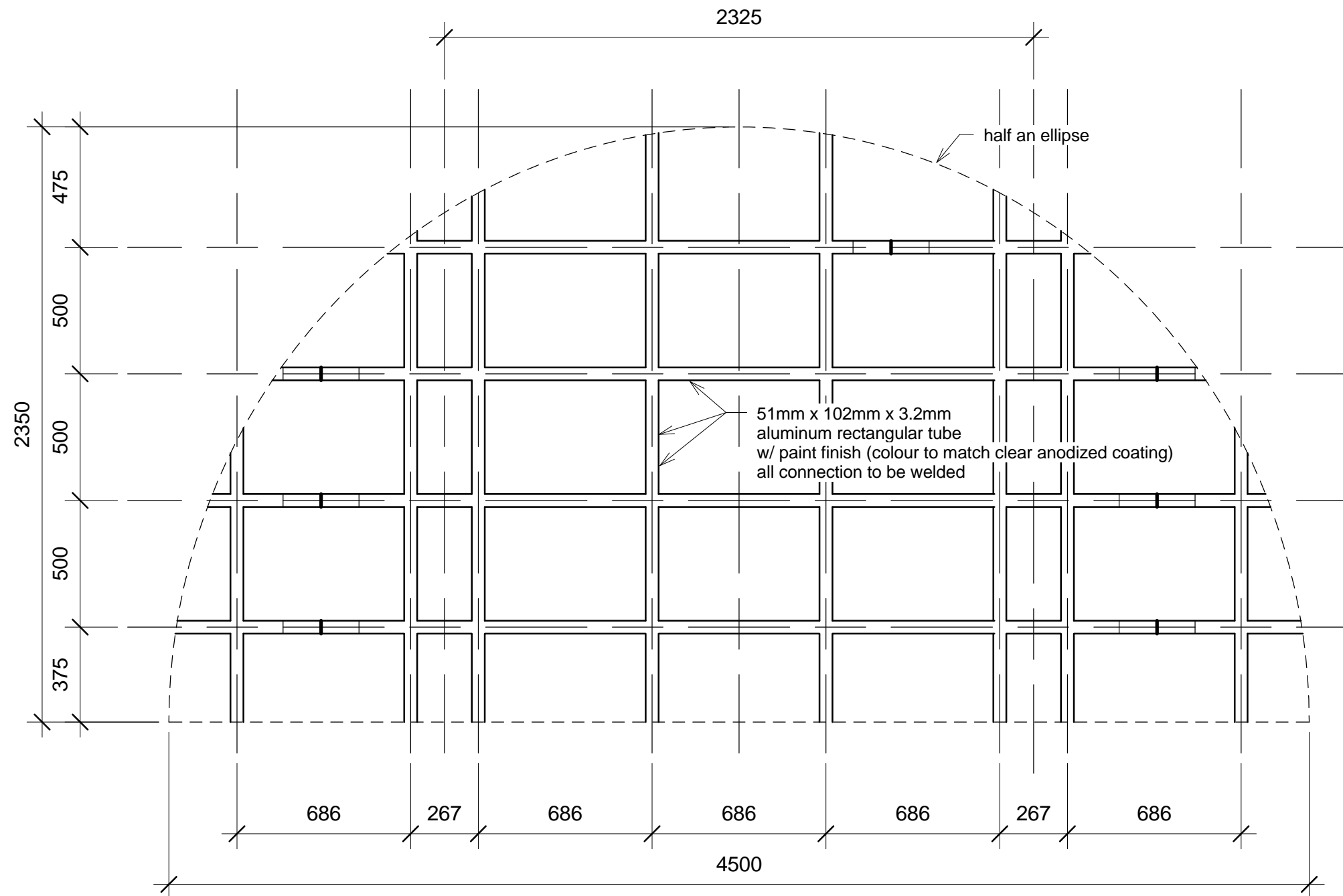
project: Campus Wayfinding  
 number: FM 09-8567  
 issue date: Jan 31, 2012

sign: Sign No. 4 - Vehicular Map Directory Kiosk  
 sheet name: sign construction - canopy plan and details (anodized)  
 scale: as noted

sheet number:

08

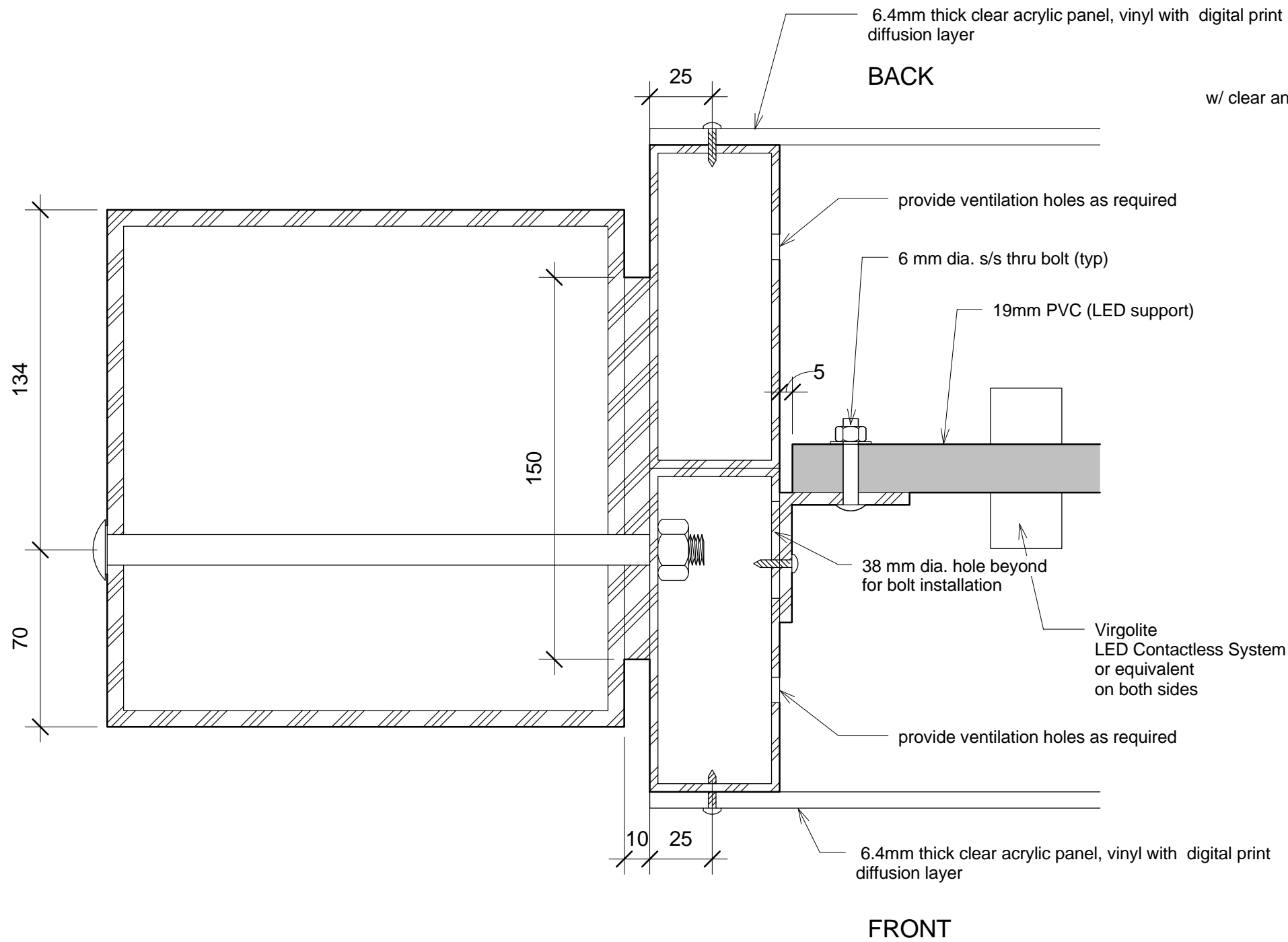




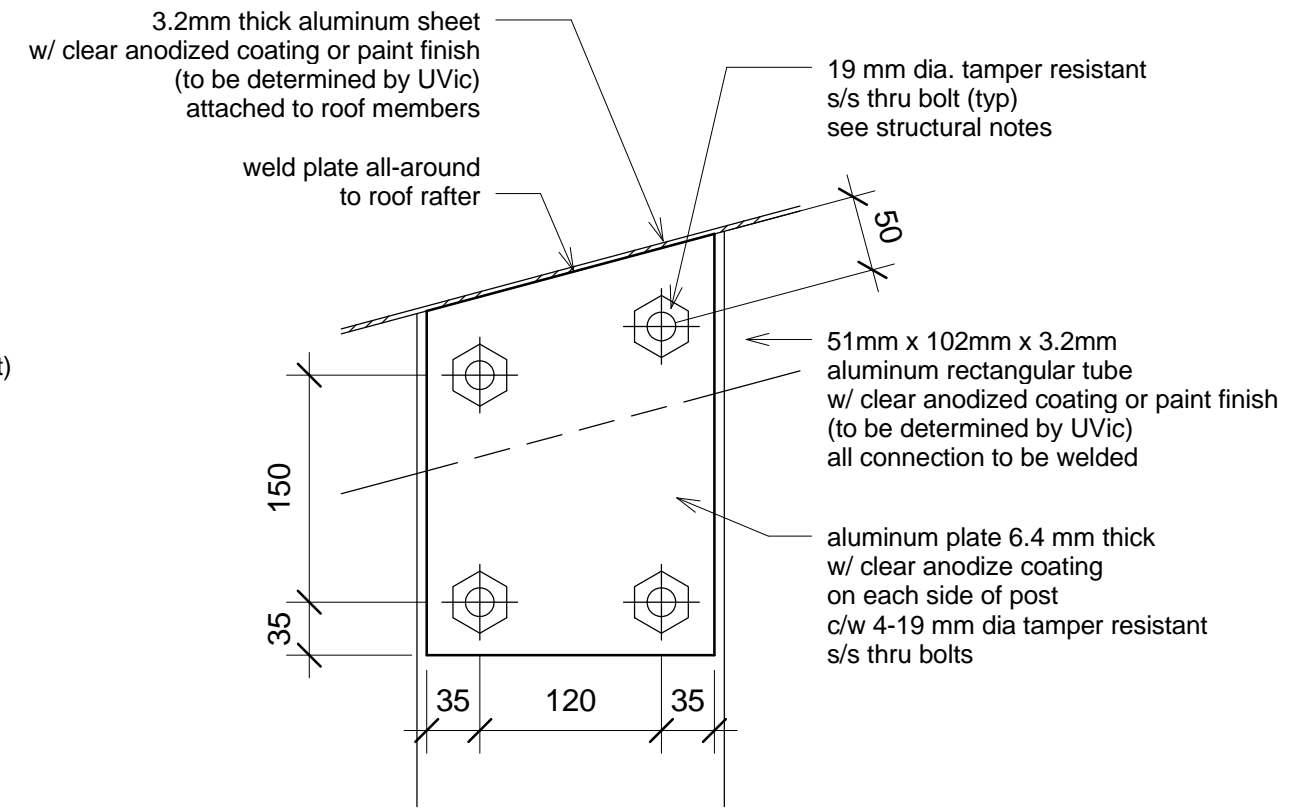
General Note:  
 Manufacturer to verify all dimensions  
 prior to sign fabrication. All discrepancies  
 should be reported to the Architect.

**canopy (paint finish option)**  
**plan scale 1:20**





**plan detail 1 scale 1:2**



**detail 2 scale 1:5**

## STRUCTURAL NOTES

### **DRAWINGS**

1. These drawings show the completed project. The drawings do not show components that may be necessary for construction safety, which is the responsibility of the contractor.
2. The use of these drawings is limited to that indicated in the revisions column.
3. The information on these drawings shall not be used for any other project or works.

### **DESIGN**

1. The structures shown have been designed in substantial accordance with the British Columbia Building Code 2006, which is based on the National Building Code of Canada 2005.
2. The following wind loads and factors were used:  $q_{50}=0.63\text{kPa}$ ,  $I_w=1.0\text{-ULS}$ ,  $0.75\text{-SLS}$ .

### **FIELD REVIEW BY STRUCTURAL ENGINEER**

1. Structural Engineer provides field review only for the work shown on these structural drawings, and it is conducted with such frequency as Structural Engineer deems appropriate to ascertain that the work is in general conformance with the documents prepared by Structural Engineer.  
Field review by Structural Engineer is not carried out for the Contractor's benefit, nor does it make Structural Engineer guarantors of the Contractor's work. It remains the Contractor's responsibility to build the work in conformance with the contract documents. Structural Engineer shall not be responsible for the acts or omissions of the Contractor, Sub-Contractor, or any other persons performing any of the work or for the failure of any of them to carry out the work in accordance with the contract documents.
2. Provide 24 hours advance notice of each required field review. Field reviews shall be scheduled to be carried out during normal business hours unless special arrangements are made with Structural Engineer.
3. The work to be reviewed shall be generally complete.

### **CONCRETE AND REINFORCING STEEL**

1. Concrete work shall conform to CAN/CSA-A23.1, CAN/CSA -A23.2, CAN/CSA -A23.3 and referenced documents.
2. Reinforcing shall conform to CAN/CSA-G30.18R – Grade 400MPa.
3. Cover to reinforcing steel to be 50mm uno.
4. Portland cement shall be type gu unless noted otherwise.
5. Concrete shall have a unit weight of  $23\pm 1\text{ kn/m}^3$  ( $145\pm 5\text{ pcf}$ ) unless noted otherwise.
6. Concrete shall have a compressive strength of 35MPa at 28 days, and conform to exposure class C-1 with a maximum water-cement ratio of 0.40 and air content of 5-8%. Maximum aggregate size to be 19mm.
7. No calcium chloride is permitted, in any form, in any concrete mix. Curing and protection of concrete for hot, cold or dry weather is to be as per clauses 7.4.1.8 and 7.4.2 of CAN/CSA.

## STRUCTURAL NOTES (cont)

### **STRUCTURAL ALUMINUM**

1. Aluminum sections shall be new.
2. Aluminum alloys shall conform to the Aluminum Association publication Aluminum Standards and Data ISO 6361-2 or ISO 6362-2.
3. Extruded shapes, Tubes, Bolts, and Plate to be 6061 alloy uno.
4. Aluminum in contact with concrete or grout shall be given a heavy coat of alkali-resistant bituminous paint or other equivalent coating before installation.
5. Welding operators and procedures shall be qualified according to CSA W47.2.
6. Submit shop drawings for review prior to start of steel fabrication.
7. Fabrication practices and tolerances shall be in accordance with CAN/CSA-S16, except bolt holed edge distance tolerance to be -0, +2mm.
8. Anchor and connection bolts to be ASTM A193 Stainless Steel. Anchors shall be embedded 300mm into concrete, complete with a nut and washer each end.
9. Unless noted otherwise, column base plates shall be 20 mm minimum thick. Anchor bolt holes shall be punched undersize and reamed to size.
10. Provide 6 mm cap plates for all tube members uno.
11. Aluminum shall be connected with fillet welds all-around uno. Weld size shall match the wall thickness of the thinnest part being connected uno. Welds to be ground smooth.

### **TAMPER RESISTANCE AND CONNECTIONS**

1. Connection hardware to be stainless steel uno.
2. Aluminum panels to be connected to structure with 6.4mm diameter stainless steel self-tapping screws at 450mm maximum centre to centre spacing.
3. Non-removable panels may be welded or glued by the manufacturer, as approved by Structural Engineer.
4. Panel connection screws to be tamper resistant "Torx-Pin" screws as supplied by O.E.M. Hardware of Surrey BC, or equivalent as approved by Structural Engineer.
5. Visible connection bolts shall be "Pentagon" tamper resistant bolts, with "Pentagon" nuts as supplied by O.E.M. Hardware of Surrey BC, or equivalent as approved by Structural Engineer. Anchor bolts to be secured with "Pentagon" security nuts.

## ELECTRICAL NOTES

1. Signs must be provided with CSA label
2. LED modules, power supplies, cable, wire and junction box must be integral with signs
3. All electrical installations to be done in accordance with the Canadian Electrical Code and as recommended by the LED lighting manufacturer.
4. Run 2#8 +GND conductors in 27mm PVC conduit from sign to existing campus exterior lighting pole standard. Intercept existing underground conduit, install an H20 rated flush junction box with bolt-on cover and splice into exterior lighting circuit.
4. The sign manufacturer shall provide an electrical shop drawings indicating input power requirements and a schematic wiring diagram for the sign.

