



Facilities Notice

Capital Development & Delivery | Facilities Management
Saunders Building, PO Box 1700 STN CSC Victoria BC V8W 2Y2 Canada
T 250-721-7591 | www.uvic.ca/fmgt

Title: 24-06263 Petch, Elliot, & Cunningham Chiller Replacement

Location: Petch, Cunningham

Description: **Crane Lift / Partial Building Closure**

Facilities Management and Caird Mechanical will be replacing the second of two chillers on the roof of the Petch Building on Friday, May 30, 2025

This will be a full day process during which the old chiller will be lifted off the roof from the west/loading dock side of the building and its replacement will be lifted into place using the same crane.

Due to the significant weight of this chiller and the act of lifting it above the roof, we need to close the Petch Building directly under the path of the crane lift, as a precaution.

This will close:

- **All restrooms on the north-west end of the building**
- **Several offices in Petch**
- **A section of the far west end of the Petch corridor (all levels)**
- **The Petch-Cunningham connector (all levels)**

The closure will affect the following rooms

Ground floor: 003-015, 020, 021

First floor: 101- 107, 109

Second floor: 206, 207 (suite), 209, 216, 218 218A

If your office or a portion of your lab is among those affected by this closure, I sincerely apologize for the disruption. Please try to make sure that you have anything you need to work in an alternate location next Friday. If you absolutely need to access your office or this portion of your lab, it may be possible in between crane lifts. Please reach out to me to coordinate a time.



Facilities Notice

Capital Development & Delivery | Facilities Management
Saunders Building, PO Box 1700 STN CSC Victoria BC V8W 2Y2 Canada
T 250-721-7591 | www.uvic.ca/fmgt

Alternate restrooms are available at the centre of the Petch Building on all levels.

Time frame: Friday May 30rd, 2025 – All day

FMGT contact: Jen Miley, Project Manager

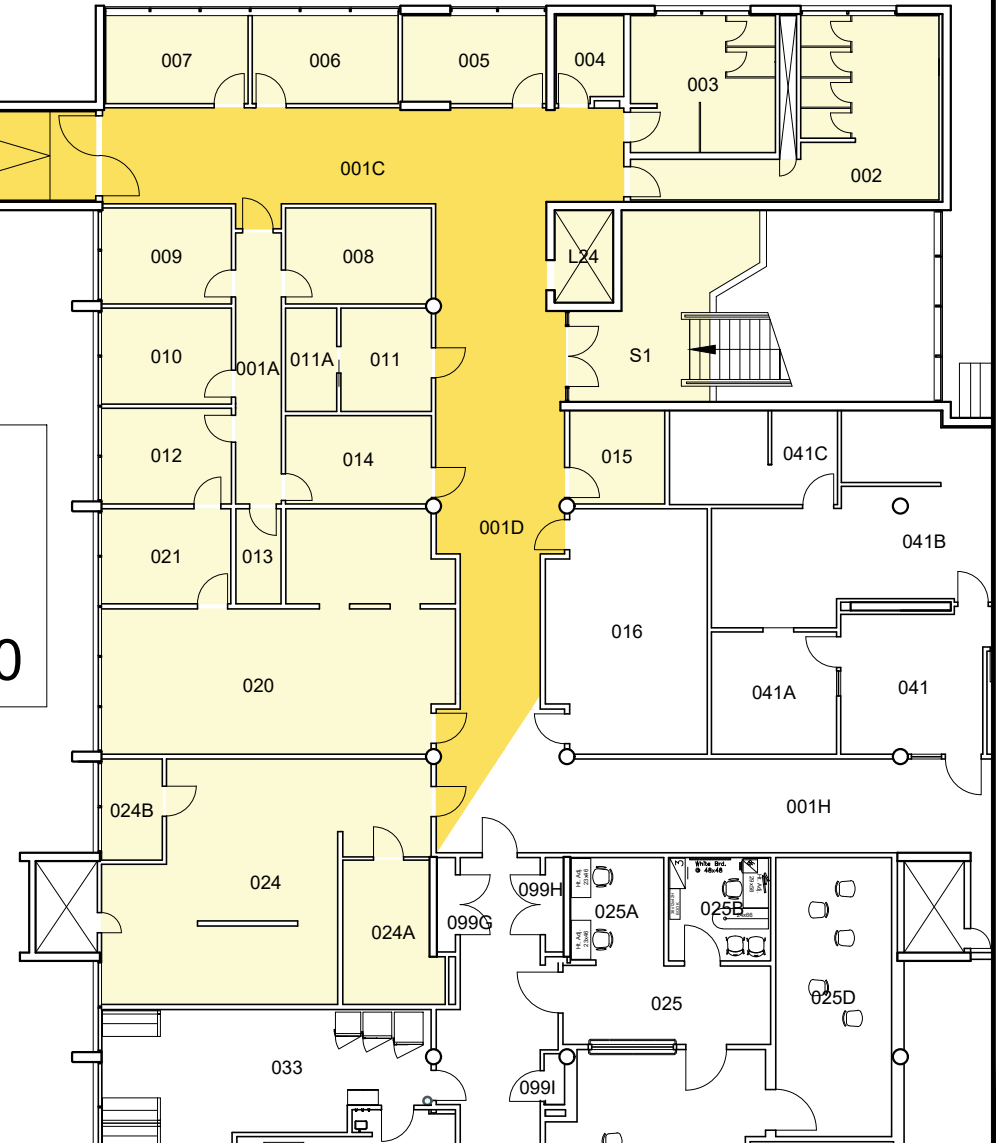
Email address: jmiley@uvic.ca

Phone: 250-661-0981

CUNNINGHAM BUILDING

Friday May 30, 2025

- Hallway Blocked
- No Access to Shaded Rooms,
No Exit from Elevator on Level 0



Notes:

This drawing is for reference only. All site dimensions and conditions must be field-verified and reflected in all drawings submitted to UVic. The UVic title block is for FMGT use only. Modifications made to this document must be represented by the modifiers own title block. Any discrepancies found in UVic drawings must be communicated to UVic FMGT Project Manager assigned to the Project.



**University
of Victoria**

Facilities Management

Title:
Petch Chiller #2 Installation
& Crane Path Safety
Level 0

Date: May 27, 2025
Scale: NTS
Drawn By: DJP
Project Number: 24-06263
Drawing No. SK1

May 30, 2025

Access Blocked

Access to Shaded Rooms, Blocked from Elevator on Level 1

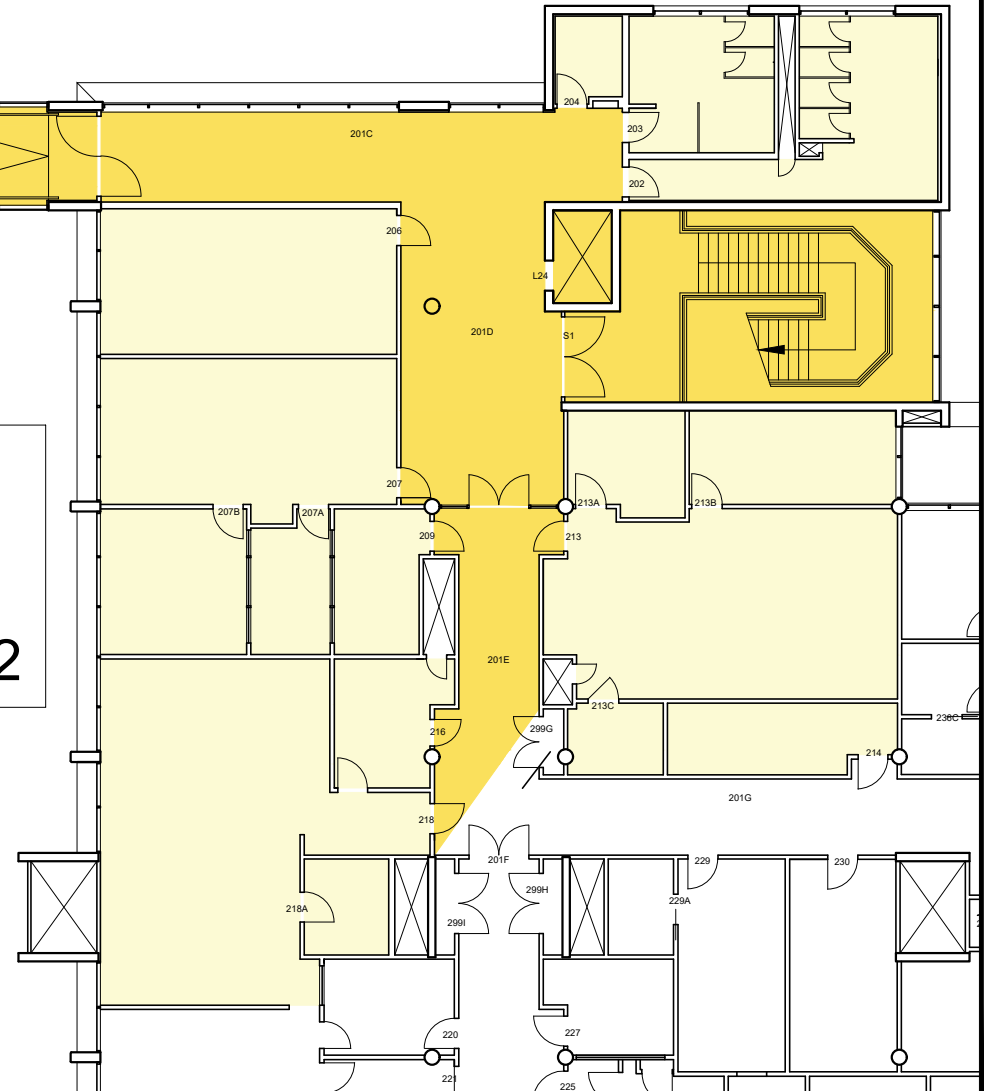
 Hallway Blocked
 No Access to Shaded Rooms,
 No Exit from Elevator on Level 1

Date: May 27, 2025
Scale: NTS
Drawn By: DJP
Project Number: 24-06263
Drawing No. SK2

CUNNINGHAM BUILDING

Friday May 30, 2025

- Hallway Blocked
- No Access to Shaded Rooms,
No Exit from Elevator on Level 2



Notes:

This drawing is for reference only. All site dimensions and conditions must be field-verified and reflected in all drawings submitted to UVic. The UVic title block is for FMGT use only. Modifications made to this document must be represented by the modifiers own title block. Any discrepancies found in UVic drawings must be communicated to UVic FMGT Project Manager assigned to the Project.



**University
of Victoria**

Facilities Management

Title:
Petch Chiller #2 Installation
& Crane Path Safety
Level 2

Date: May 27, 2025
Scale: NTS
Drawn By: DJP
Project Number: 24-06263
Drawing No. SK3