

ABOUT THE PROJECT



THE NEW CAMPUS GREENWAY LOOKING WEST FROM PETCH FOUNTAIN

ABOUT THE CAMPUS GREENWAY

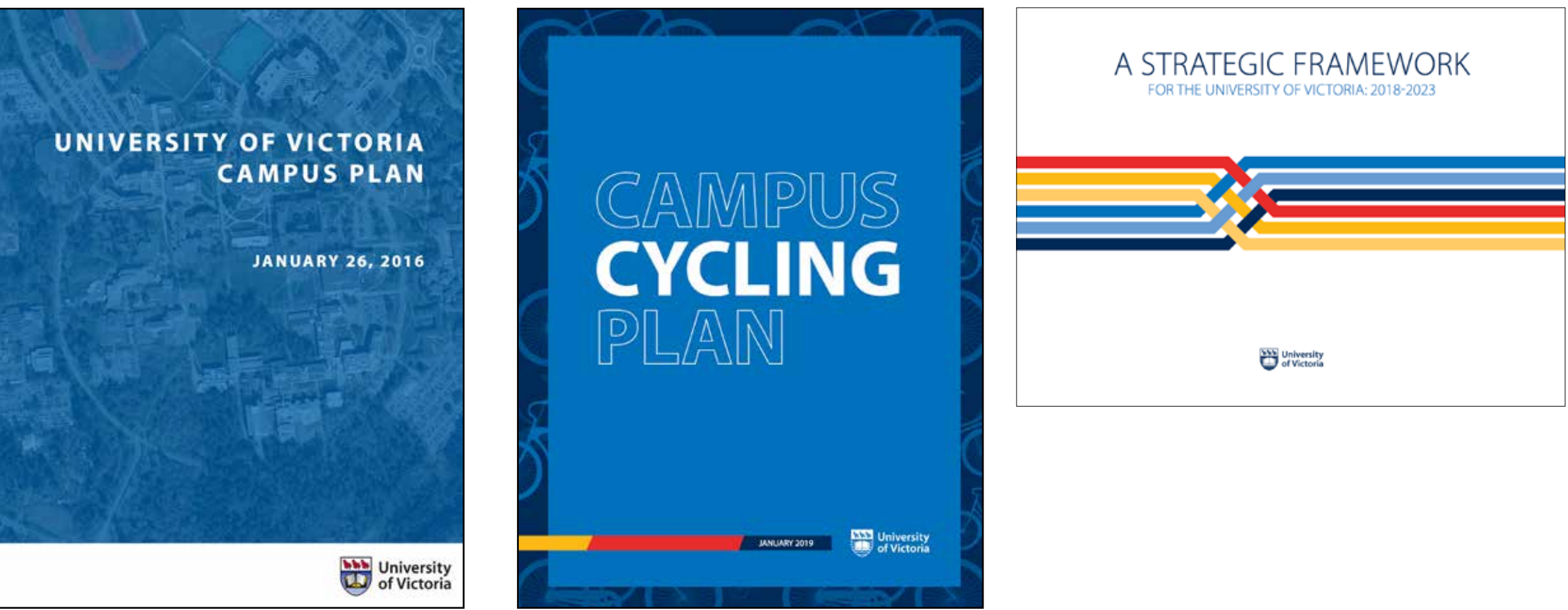
The Campus Greenway (previously known as the Grand Promenade) will act as a vibrant academic and social hub along the primary east-west multi-modal pathway connecting buildings and public spaces on campus. The vision for the Greenway was established as a “Big Move” in the UVic Campus Plan, 2016.

The Campus Greenway also represents a unique opportunity to address the Strategic Framework priority of increasing the vibrancy of campus life by enhancing the natural and built environment to create more opportunities for interaction and collaboration. It will contribute to the identity of the campus and also aid in fostering respect and reconciliation with Indigenous communities by contributing to a welcoming, inclusive campus environment for all.

ABOUT THE LANDSCAPE PLAN & DESIGN GUIDELINES

The Campus Greenway Landscape Plan & Design Guidelines will serve to support and coordinate the implementation of landscape and public realm improvements along the length of the Greenway. Improvements are expected to be phased and implemented over ten or more years.

The development of the Campus Greenway was guided by the Campus Plan, Strategic Framework, and the Campus Cycling Plan



GUIDING PRINCIPLES

- 1 Embed Indigenous culture, language, history and connections to land into the design process.
- 2 Integrate mature and any new trees as key and defining features of the Campus Greenway.
- 3 Create a variety of outdoor spaces integrated with the Greenway that support social and academic interaction.
- 4 Ensure design reduces conflicts between pedestrian, cyclists and service vehicles.
- 5 Embed demonstrated sustainability practices into every design solution.
- 6 Ensure the design of the Campus Greenway responds to campus mobility and accessibility.
- 7 Ensure any design responds in a meaningful way to adjacent buildings and broader campus connectivity.
- 8 Ensure the entire extents of the Campus Greenway is a safe, secure and inclusive path during all times and weather conditions.
- 9 Ensure all material are durable, regionally appropriate and adaptable over time.
- 10 Ensure design presents a cohesive vision and narrative of the entire Campus Greenway.
- 11 Ensure design supports learning opportunities.
- 12 Ensure proposed design is economically sustainable and will be maintained over time.

PROJECT SCHEDULE

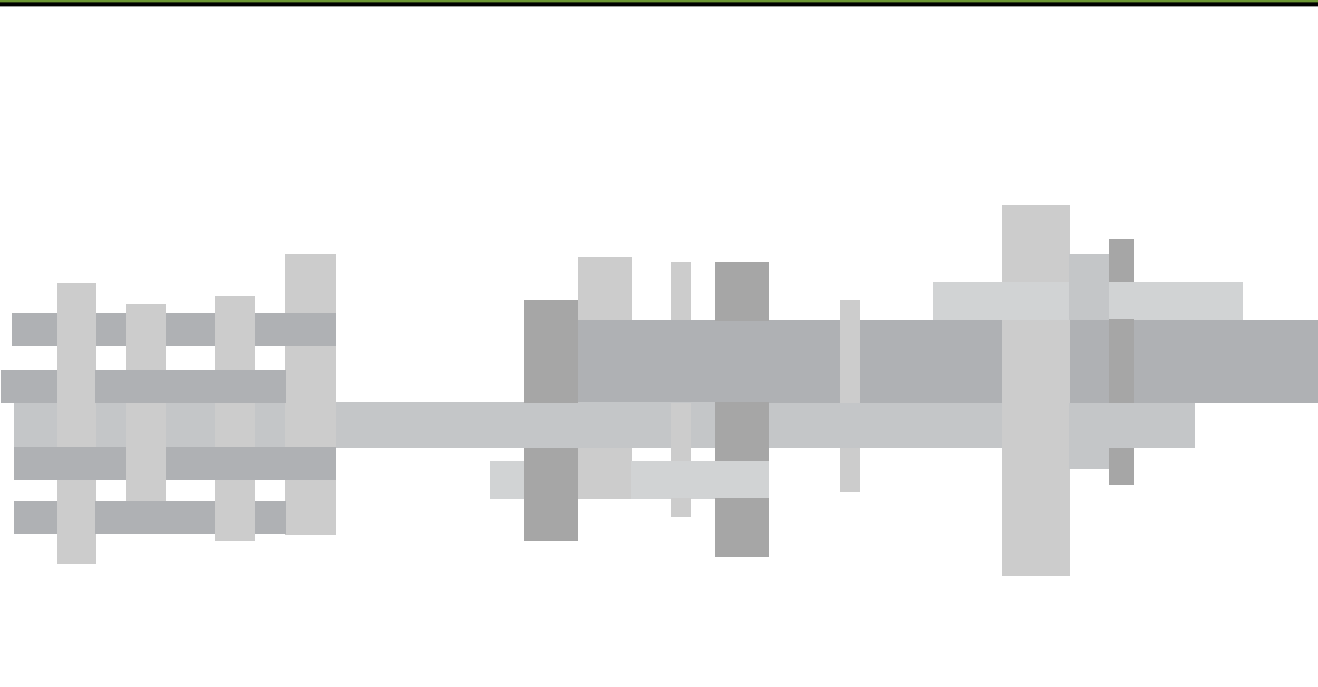


PROJECT SUMMARY



THE CONCEPT

The conceptual and spatial framework of the Campus Greenway is largely inspired by the Indigenous Plan's metaphor of weaving.



*"Weaving cedar is always a purposeful activity; the pulling together of cedar strands to weave a headband, a basket, a cape, a rope, or a hat requires **weaving together many strands to create a stronger, more durable and lasting tool that will serve the community...***

We encourage you to think about **the metaphor of weaving** and the multi-faceted nature of this work as you read and consider this Indigenous Plan. How do you imagine your final creation? How does thinking in this way enable you to work in a good way and with a good heart?"

From Indigenous Plan 2017-2022 University of Victoria

WHAT WE'VE HEARD

- Vegetation**
 - "Native plant use to help support wildlife."
 - "More native edible plants"
 - "Use Indigenous plants along the Promenade"
 - "Green spaces."
 - "Climbing plants to create natural shade."
 - "Trees as important aspect of resurgence, regeneration, healing, etc."
- Indigenous Culture and Public Art**
 - "More indigenous rights focus."
 - "Emphasize First People's House."
 - "More public art and sculptures along promenade."
 - "Interactive art."
 - "Multilingual signage and wayfinding"
 - "Calling it the 'Grand Promenade' is problematic and at odds with the Campus' longstanding commitment to, and relationships with, Indigenous communities."
- Identity**
 - "One consistent material palette with special zones - site specificity"
 - "No more concrete colour. Sustainable materials."
 - "Consistent signage and lighting"
 - "Art and installations"
- Vibrancy**
 - "Places to sit and interact, gathering space"
 - "Flexible spaces for ceremonies, performances, informal gathering"
 - "Activate building edges"
 - "Outdoor classrooms"
 - "Variety of spaces"
 - "A place that is the 'Heart'"
- Sustainability**
 - "More places to recycle on the walk way."
 - "Ethnoecology and Permaculture class projects"
 - "Increase bird habitat to increase biodiversity."
 - "Use soil vaults"
 - "Interpretive panels to explain renewable energy, stormwater"
 - "Sustainable funding and resources"
- Connectivity**
 - "Places along the promenade to slow down: nooks, gardens, 'rooms'"
 - "The Promenade is more than a movement corridor... it should be a place where people connect with each other"
 - "Long-term vision for a clear path alignment"
- Safety and Transportation**
 - "Consistent lighting along the promenade to encourage safety."
 - "Vehicle-free zones"
 - "Use material and signage as indicators"
 - "Control truck access to promenade and Quad."



The Ideas Fair Fall 2018

THE BIG IDEAS



The Greenway expresses a gradient of character

The Greenway (and people) take precedence

The Greenway has a heart

The Greenway is green in character

The Greenway is a place not just a corridor

The Greenway tells a story

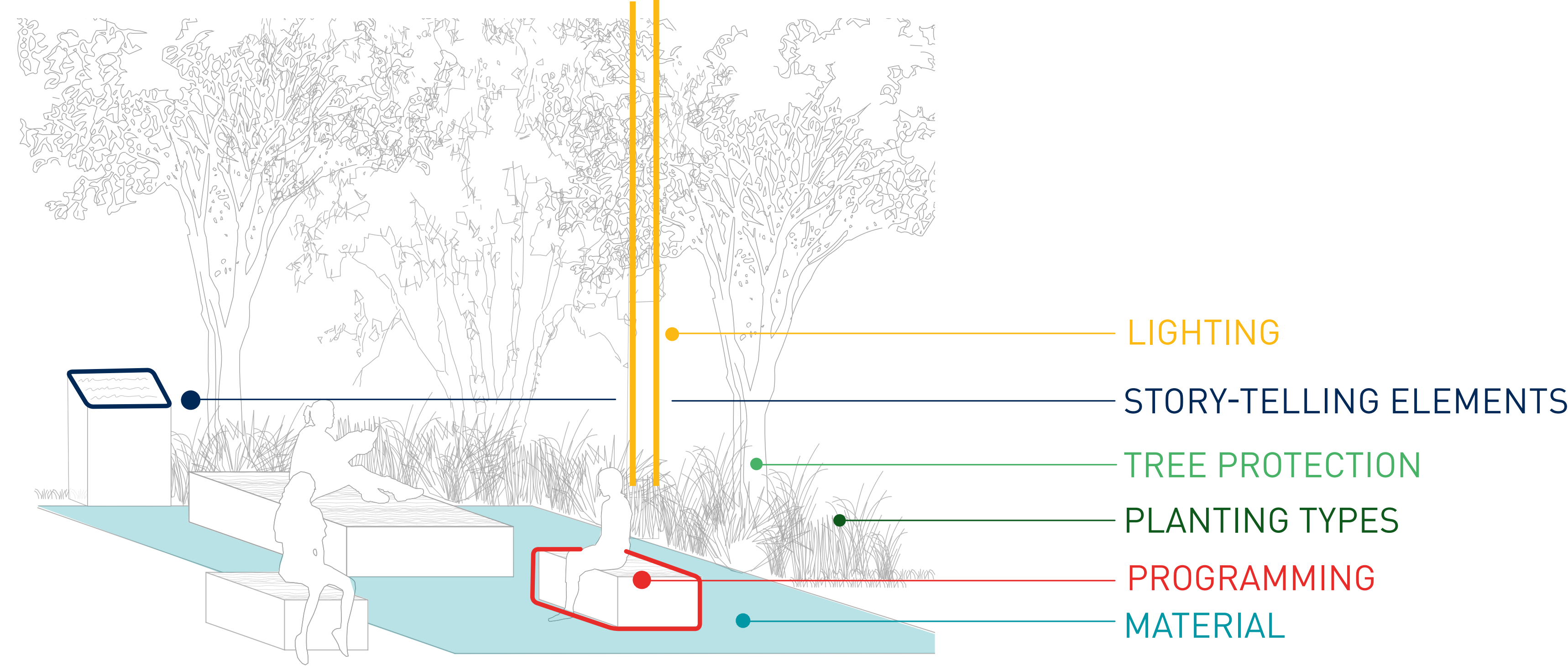
TELL US WHAT YOU THINK!

DESIGN TOOLKIT



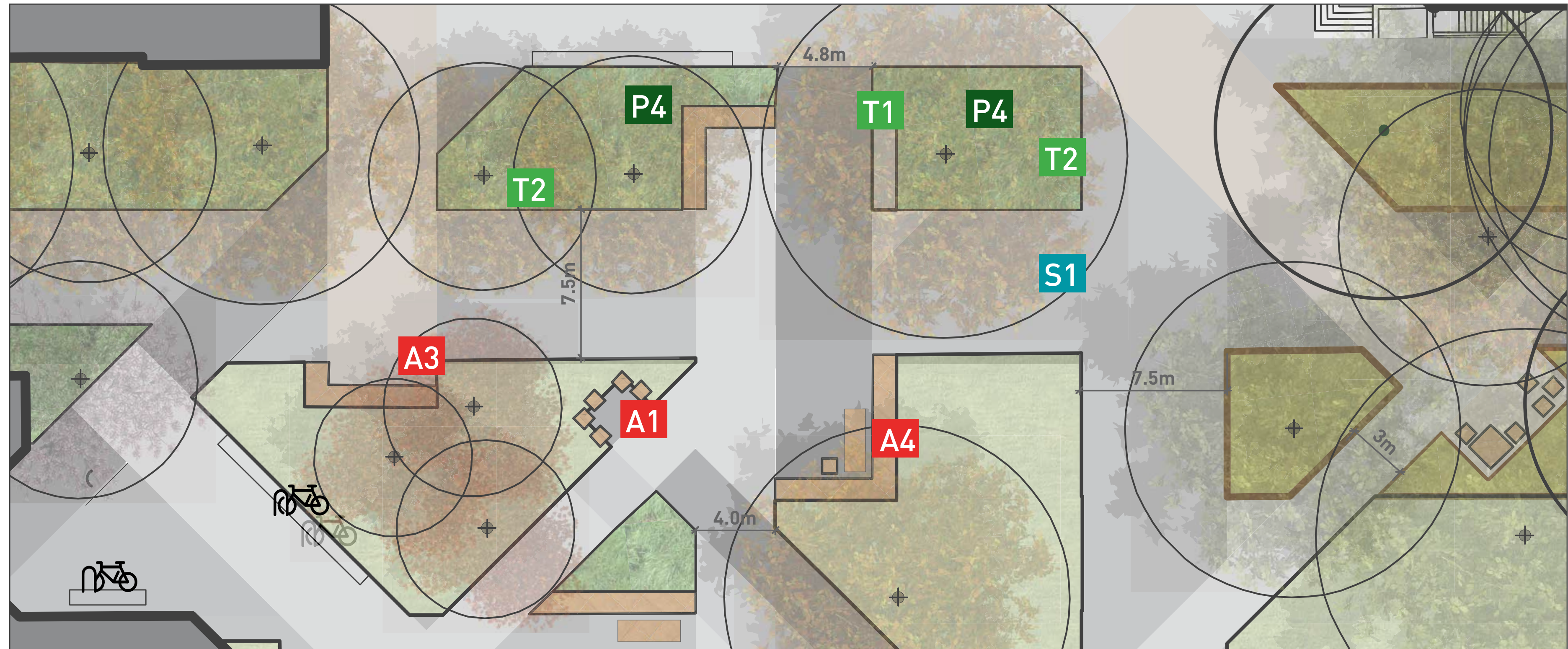
A KIT OF PARTS

A kit of parts provides for a consistent material and planting palette to be provided across the Campus Greenway.



HOW IT WORKS

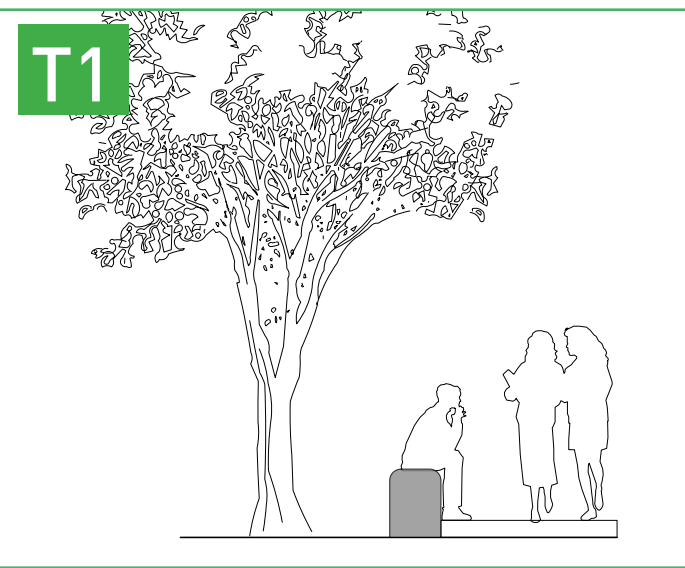
Recommended design strategies are provided on concept plans to guide future decision making.



TELL US WHAT YOU THINK!

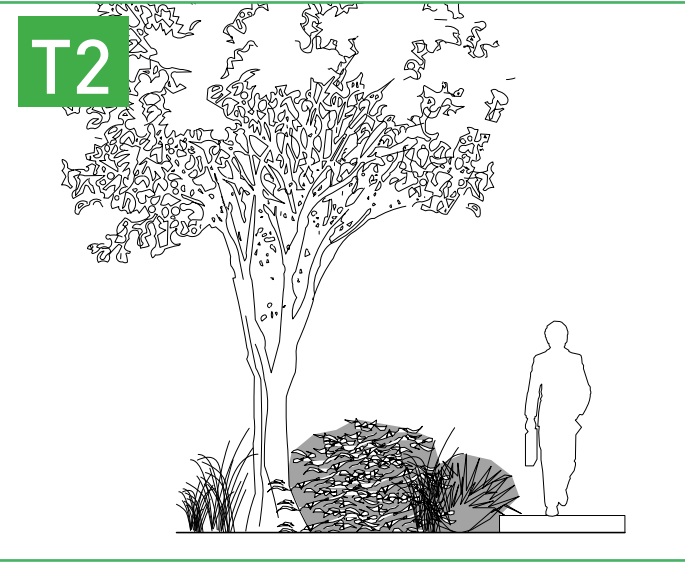
TREE PROTECTION

Deter foot traffic that causes soil and root compaction



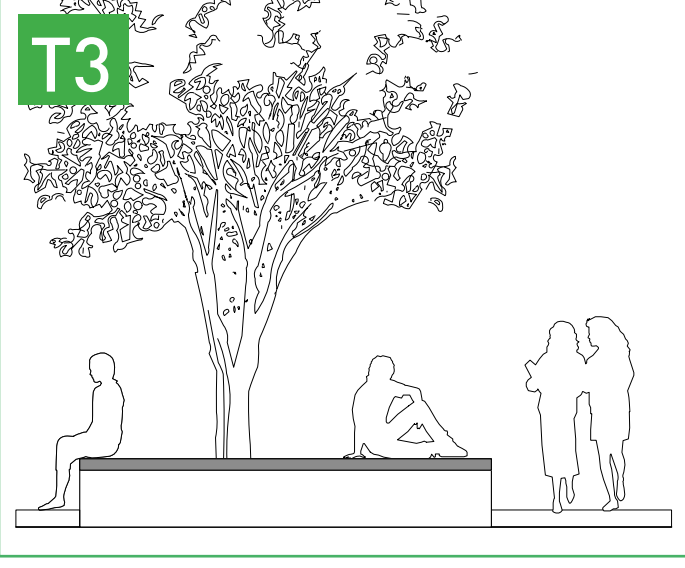
STONE WALL OR CURB

- Provides programming amenity



EDGE PLANTING

- Select hardy, native, low maintenance planting



SEATING PLATFORM

- Provides programming amenity below tree canopy



FENCING

- Utilized in Restoration Nodes only to restrict foot traffic and indicate ecological value.
- To be supplemented with interpretive signage (see Restoration Nodes)

STORYTELLING ELEMENTS

For all elements, work with indigenous and academic community to design and construct these elements



INTERPRETIVE PANELS

- Located where there are opportunities for learning
- Possible Content: Site history, Indigenous history, Lkwungen language, sustainability feature, public art



SPECIAL PAVING

- Indicates special areas and support overall narrative



INDIGENOUS PUBLIC ART

- Work with Coast Salish artists to display artwork at key locations



UVIC EDGE BRANDING

- Create a physical representation/installation of the UVic Edge brand on campus

PLANTING TYPES

Provide a palette of planting types that highlight Indigenous plantings, enhance stormwater features and enhance the existing campus landscape



GARRY OAK MEADOW

- Develop restoration plan
- Consider academic calendar year when selecting meadow flowers



WETLAND

- Include plants used in traditional Indigenous basketry (horsetail, swamp grass, three-corner bulrush etc)



WOODLAND

- Include plants with high ethnobotanical value

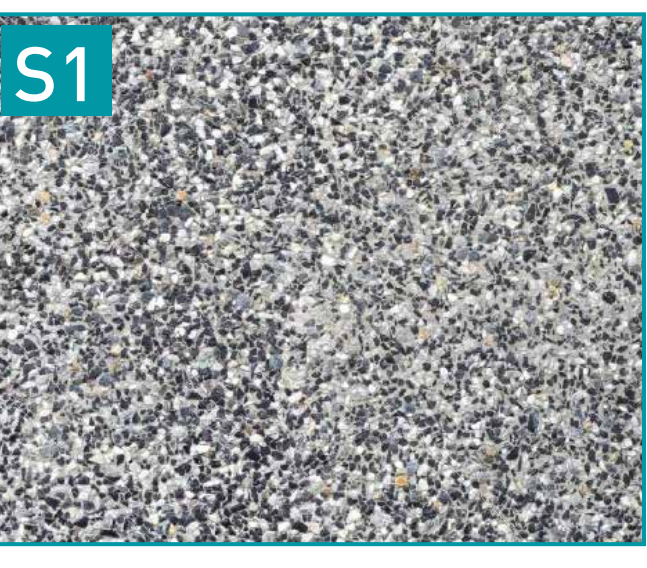


NATIVE EVERGREEN

- Prioritize low maintenance evergreen shrubs that deter foot traffic

MATERIALS

The character of the Greenway is largely determined by its material palette



EXPOSED AGGREGATE

- Economical, versatile and currently the predominant surfacing on campus
- Consider at least 3 variations of colour



STONE

- Used to highlight special areas and support local identity
- Locally sourced from Vancouver Island



TIMBER

- Supports regional identity
- Signals special areas



ASPHALT

- Smooth surface offered by asphalt is especially important for cyclists
- Consider on Western Greenway where cyclists have separate pathway

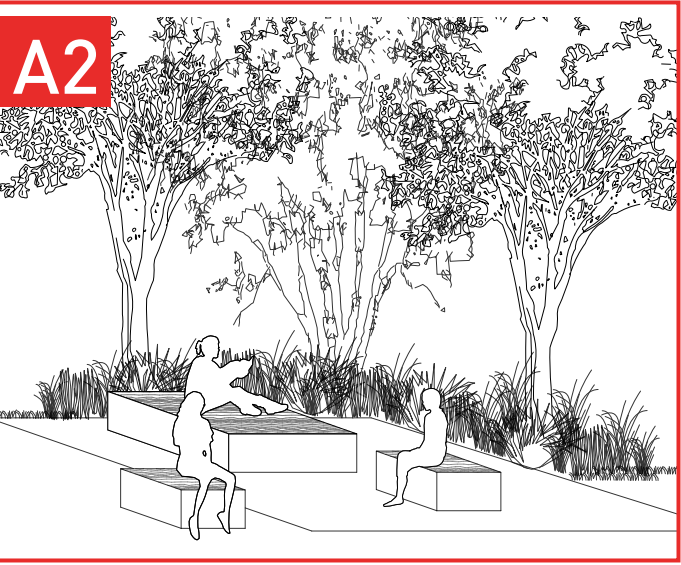
PROGRAMMING

Provide a variety of site furnishings to support active and passive programming



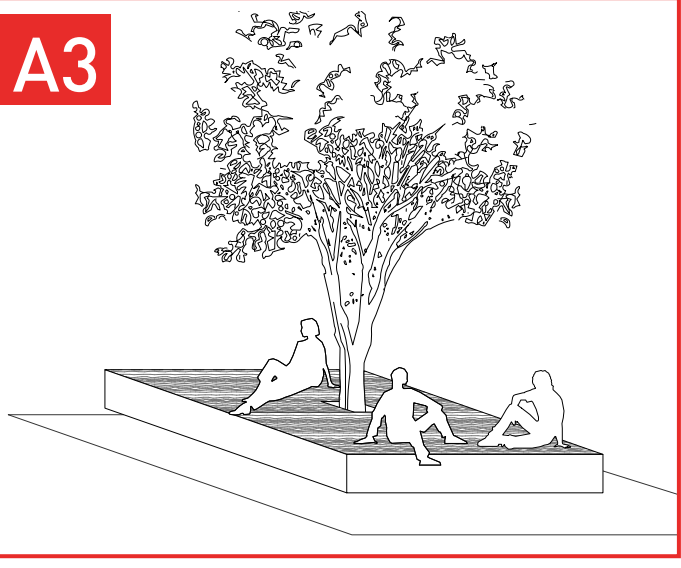
LEARNING

- Provide opportunities for independent and group learning
- Small nooks or large gathering spaces



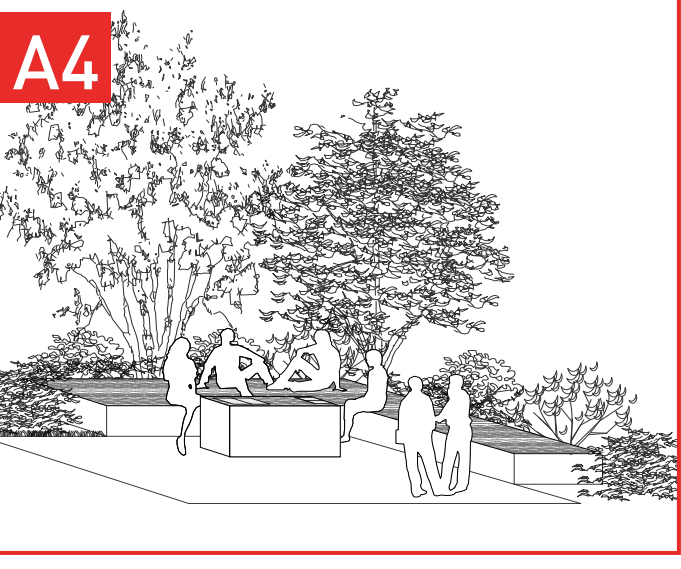
GATHERING

- Space site furnishing to encourage gathering and social interaction



HANGING OUT

- Flexible spaces that accommodate both social and independent relaxation



STUDYING

- Site furnishing such as long tables (including electrical outlets) to encourage group studying
- Consider adjacent academic departments

LIGHTING

Strategic illumination that enhances the experience of a safe public realm at night.



PEDESTRIAN POLES

- Retain existing pedestrian poles where possible



INTEGRATED LIGHTING

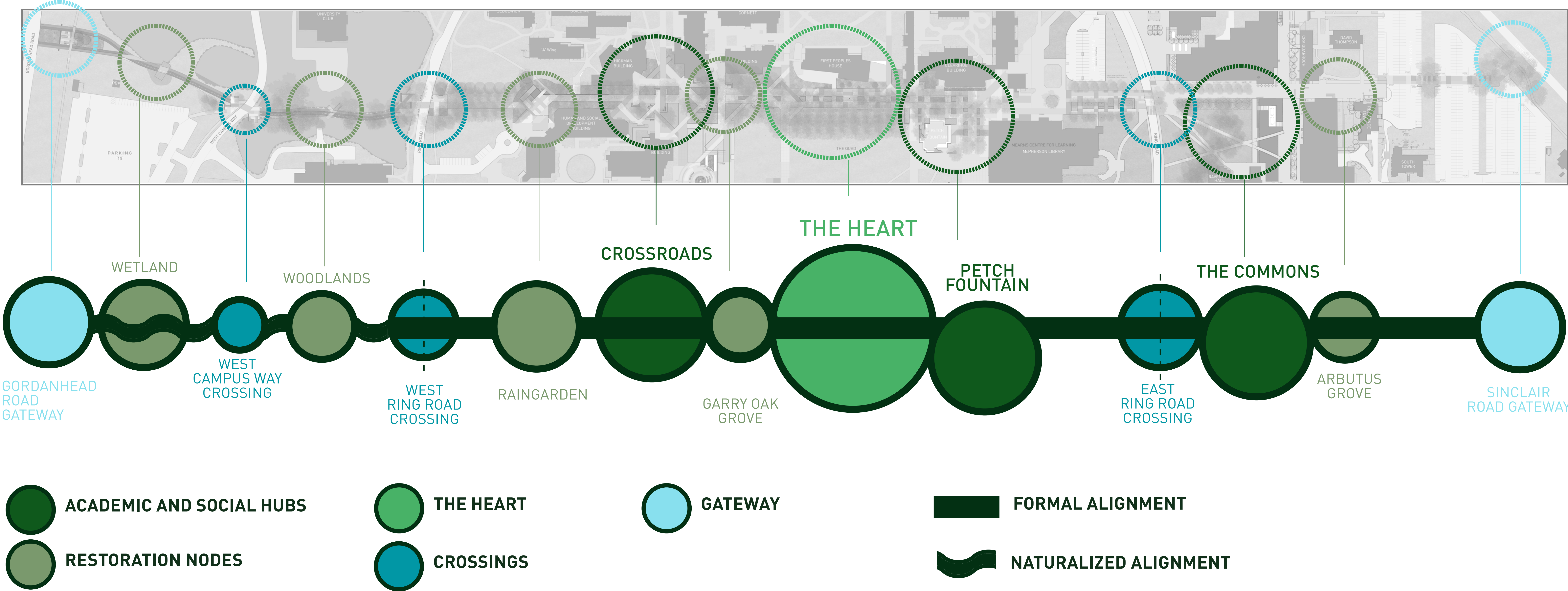


FEATURE LIGHTING

ORGANIZATIONAL FRAMEWORK

Study Area

The organizational framework identifies important nodes along the Campus Greenway. These areas are distinct and identifiable but maintain unified characteristics and principles depending on their location and programming.



ORGANIZATIONAL FRAMEWORK

Distinct Areas



ACADEMIC AND SOCIAL HUBS

The Academic and Social Hubs support the Campus Plan's objective to encourage collaboration, interaction and innovation through outdoor meeting places.

DEFINING STRATEGIES

- Create more seating areas, both formal and informal, to support and encourage academic and social interaction.
- Provide spaces that can be enjoyed at various times of day, seasons, weather etc. by enhancing lighting, covered areas and perennial planting



RESTORATION NODES

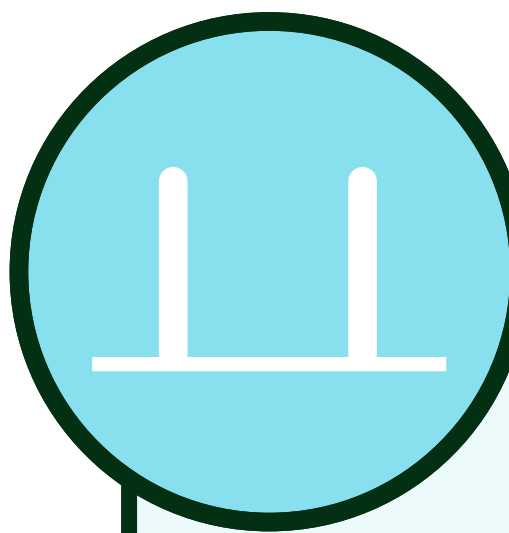
The Restoration Nodes are distinct places where sustainability and ecological identity are emphasized.

DEFINING STRATEGIES

- Make the preservation, restoration or introduction of regionally significant ecologies the key design driver
- Embed and showcase sustainable materials, processes and features with an emphasis on Indigenous knowledge
- Include interpretive panels
- Provide furnishings that support contemplative passive enjoyment



TELL US WHAT YOU THINK!

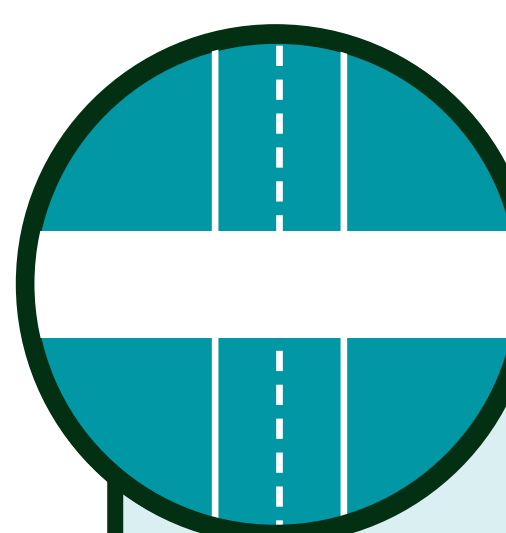


GATEWAYS

The Gateways are important thresholds that announce your arrival on the UVic Campus and the Greenway.

DEFINING STRATEGIES

- Increase the sense of welcome and visual prominence of gateways as the clear and distinct points of entry through features such as public art, signage, lighting, and landscape features
- Include clear wayfinding strategies and transition zones for multi-modal pathways



CROSSINGS

A guiding design principle of the Greenway is that people and cyclists take precedence at all intersections and paths. Each crossing is distinct and identifiable but maintain unified characteristics and principles.

DEFINING STRATEGIES

- Where the Greenway intersects with vehicular roads, ground plane treatment will indicate that pedestrians and cyclists take precedence
- Include wayfinding elements and signage and allow for transitional zones where modes of transportation merge
- Improve safety and accessibility for pedestrians and cyclists



THE HEART

The triple row of large trees adjacent to the Quad is one of the campus' most valuable assets and the heart of the Greenway.

DEFINING STRATEGIES

- Protect and enhance the health and vitality of the existing trees by preventing compaction, increasing soil volume and providing irrigation
- Create opportunities to sit under the tree canopies
- Widen the existing width to accommodate increasing pedestrian/cyclist traffic and deter "desire lines" through the lawn



DRAFT LANDSCAPE PLAN - WEST



GORDON HEAD ROAD GATEWAY

- Improve pedestrian and cycling access to campus in consultation the District of Saanich.
- Introduce gateway signage, art and wayfinding elements to provide a more welcoming experience.

BOWKER CREEK HEADWATER

- Celebrate the headwater of Bowker Creek
- Focus on enhancing ecological performance and interpretive opportunities
- Introduce Indigenous art at key locations along the path

W. CAMPUS WAY CROSSING

- Improve greenway alignment to shorten crossing distance
- Provide separated pedestrian and bicycle crossings
- Widened curb letdown
- Introduce stop signs on roadway to control traffic

WOODLANDS

- New seating area and platform overlooking University Club pond.
- Widen pathway to accommodate separated bike and pedestrian lanes per the Campus Cycling Plan
- Enhance ecological performance and ethnobotanical learning opportunities

W. RING ROAD CROSSING

- 6 m wide pedestrian and cyclist crossing
- Widened curb letdown
- Pedestrian activated push button flashing signal
- Transition from separated to shared space pathway

RAINGARDEN

- Utilizes shifted alignment and low point of the Greenway to create a node that integrates stormwater into an amenity
- Opportunity to incorporate wetland planting with educational components
- Seating platform/deck that provides opportunities for teaching, learning, socializing, etc.

EXISTING



INSPIRATION

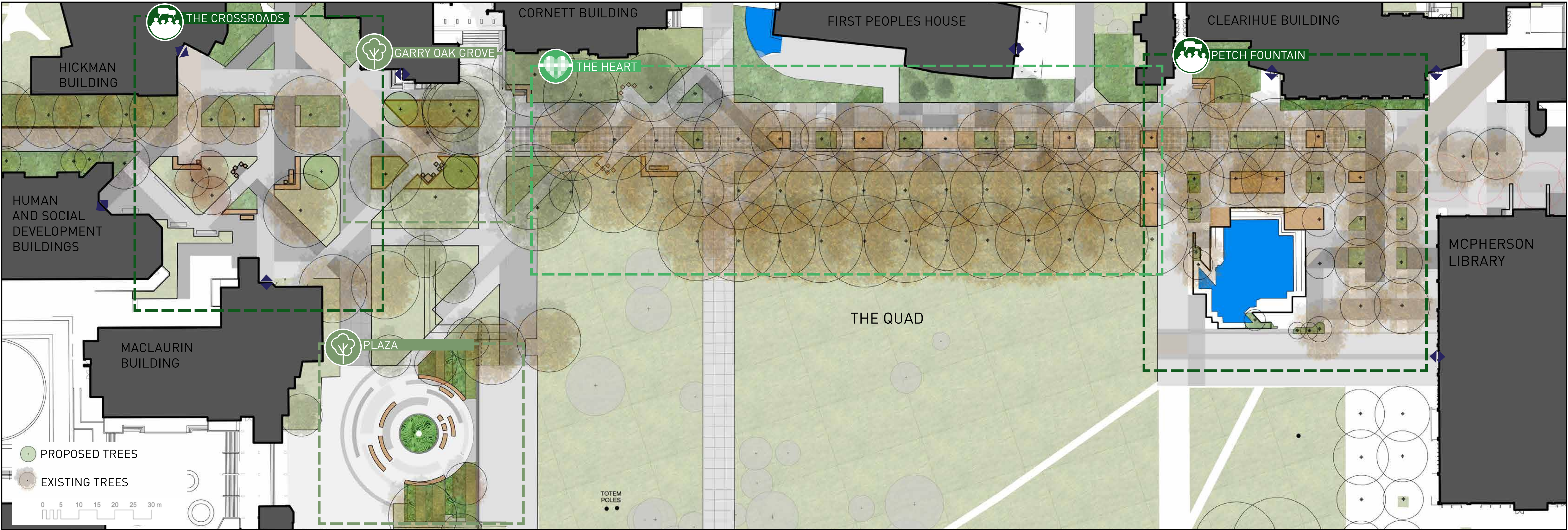


TELL US WHAT YOU THINK!

DRAFT LANDSCAPE PLAN - CENTRAL



TELL US WHAT YOU THINK!



THE CROSSROADS

- Simplified pedestrian and cyclist circulation patterns
- Expanded planted areas for trees to encourage health and longevity
- New and expanded seating opportunities

GARRY OAK GROVE

- Expands and enhances the growing area for the existing Garry Oak
- Creates an experience of walking *through* a landscape
- Opportunities for learning through interpretive signage

PLAZA

- Renewed plaza space with new seating, paving and Indigenous planting.
- Opportunities for Indigenous artwork as a focal point.

THE HEART

- The triple row of large trees adjacent to the Quad is one of the campus' most valuable assets and the heart of the Greenway
- Increase path width from 12m to 16m.

PETCH FOUNTAIN

- Multiple opportunities for gathering, socializing
- Respects the geometry of Petch Fountain while increasing the quality and quantity of seating opportunities

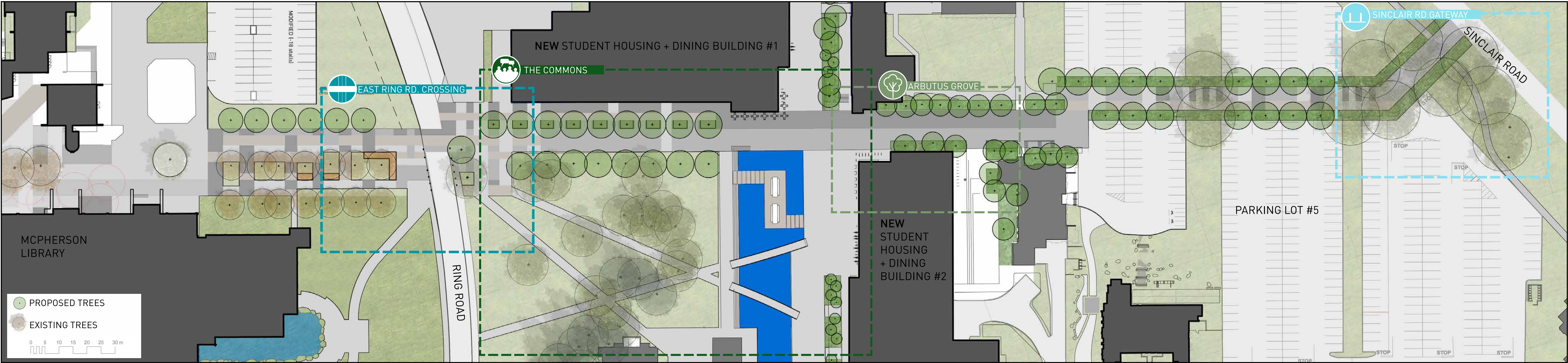
EXISTING



INSPIRATION



DRAFT LANDSCAPE PLAN - EAST



EAST RING ROAD CROSSING

- Crosswalk shifted north to reconcile Greenway alignment shift between West and East of Ring Road
- Allow for a 5.5m setback from the inside of Ring Road for a future cycling lane
- Include wayfinding, signage and identity markers to support safe and clear circulation

For more information on the new Student Housing and Dining Project see: uvic.ca/new-student-housing

THE COMMONS

- Improved pathway with new seating, bicycle parking and plantings.
- New bioswale and seating areas that provide learning opportunities about sustainable design and stormwater management.

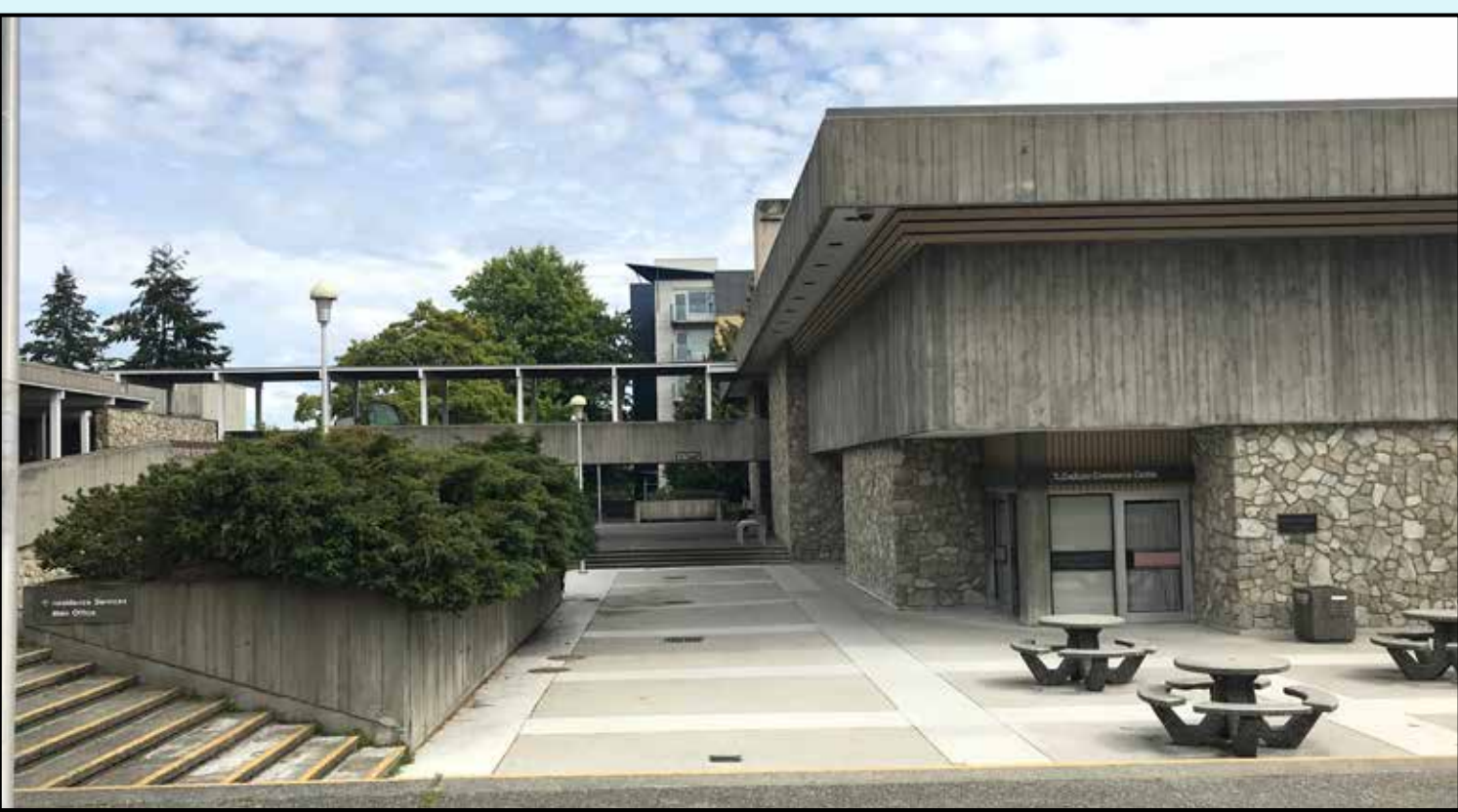
THE ARBUTUS GROVE

- Intersection of Campus Greenway and new N/S Greenway
- Garry Oak Meadow, Coastal Douglas Fir, Arbutus and other native plant species
- New seating and bicycle parking.

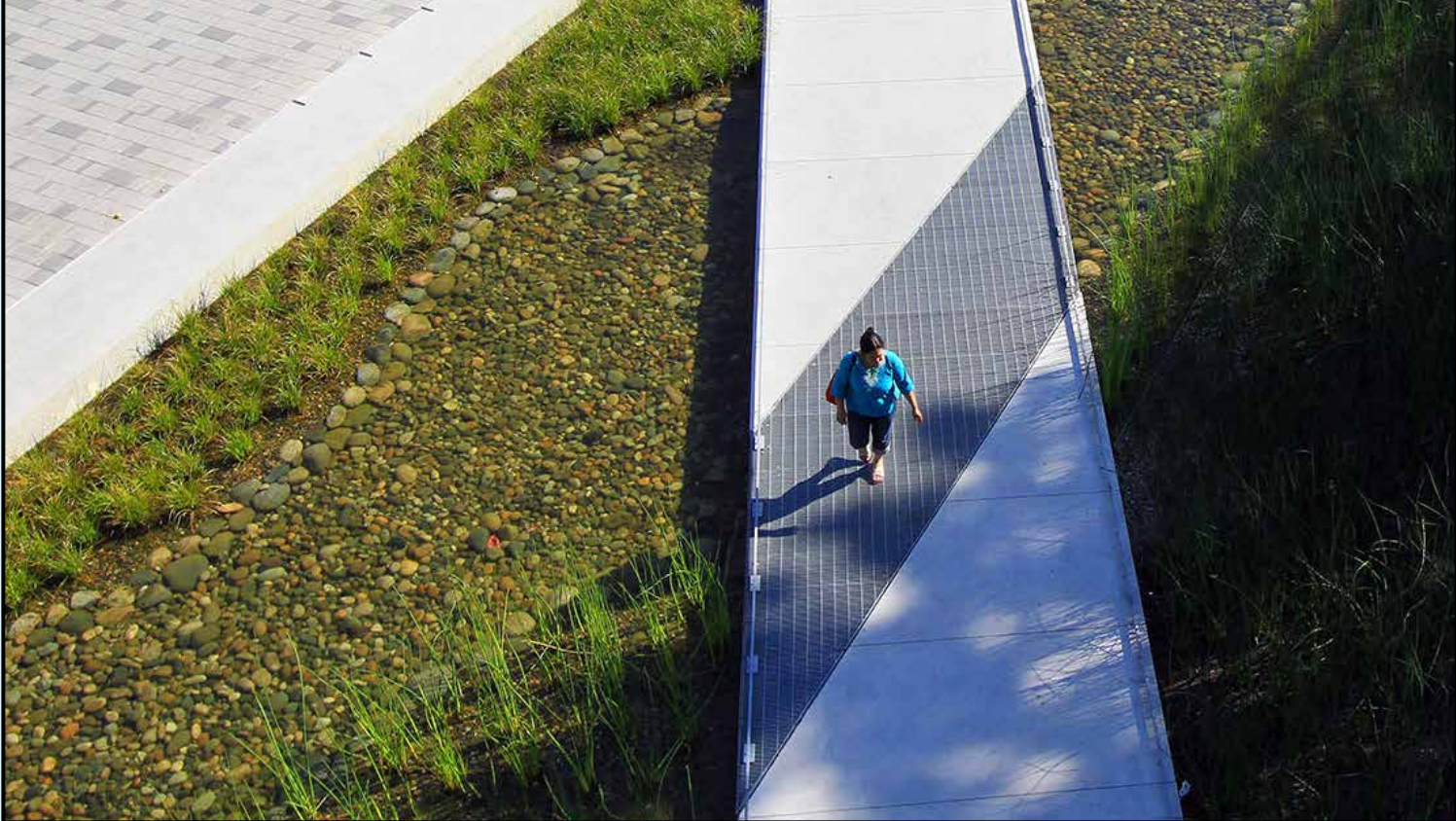
SINCLAIR ROAD GATEWAY

- Improve pedestrian and cycling access to campus in consultation the District of Saanich.
- Introduce gateway signage, art and wayfinding elements to provide a more welcoming experience.

EXISTING



INSPIRATION



TELL US WHAT YOU THINK!

TELL US WHAT YOU THINK!



THE NEW CAMPUS GREENWAY LOOKING WEST TOWARDS GORDON HEAD ROAD



THE NEW CAMPUS GREENWAY LOOKING EAST TOWARDS PETCH FOUNTAIN

WHAT DID WE MISS?
TELL US WHAT ELSE YOU THINK THE GREENWAY NEEDS: