

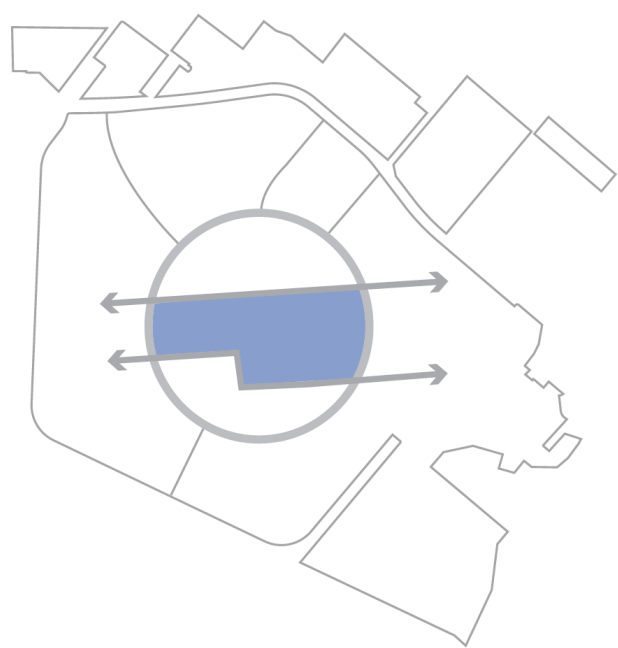


Open House

Summary Report 03.2019

TABLE OF CONTENTS

INTRODUCTION	03
ATTENDANCE	04
CONTENT	05
THEMES IN COMMENTS	06
WEST CAMPUS GREENWAY	08
CENTRAL CAMPUS GREENWAY	09
EAST CAMPUS GREENWAY	10
NEXT STEPS	11



INTRODUCTION

About the Project

The Campus Greenway represents a unique opportunity to address the Strategic Framework priority of increasing the vibrancy of campus life by enhancing the natural and built environment to create more opportunities for interaction and collaboration.

The Greenway will act as a vibrant academic and social hub along the primary east-west multi-modal pathway connecting buildings and public spaces on campus. It will contribute to the identity of the campus and also aid in fostering respect and reconciliation with Indigenous communities by contributing to a welcoming, inclusive campus environment for all.

In Phase 1, we engaged student, staff, faculty, and Indigenous stakeholders on the project values and project visions. The feedback received through the phase 1 engagement, was used to develop the draft landscape plans presented at the Campus Open House in March 2019.

The goals of this Open House were:

- To inform and update
- To receive feedback on draft landscape designs
- To confirm design directions for the Campus Greenway

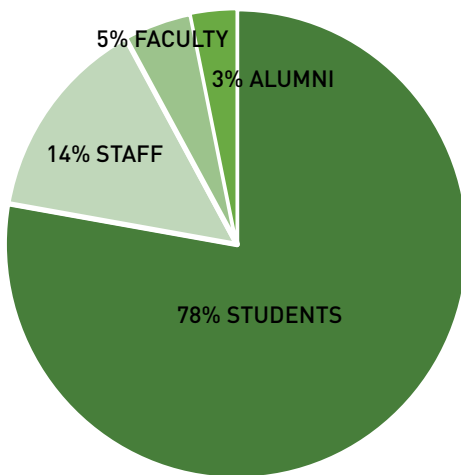


ATTENDANCE

Open House

The Campus Greenway Open House took place at the University of Victoria on March 21, 2019 in the McPherson Library foyer. Approximately 200 people attended. This report summarizes the feedback received from the campus community regarding the Greenway's design direction. The piechart below indicates the breakdown of the attendees who participated.

Attendees were asked for feedback on the design concept, design toolkit, organizational framework, and draft landscape plans for the west, central, and east greenway.



CONTENT

Draft Landscape Plan

The proposed landscape plan identifies hubs to enhance academic and social interaction, ecosystem restoration, campus gateways, crossings, and 'the Heart'. The proposed design strategies for these areas include new seating and furnishings, enhanced lighting, interpretive signage and panels, restoration of ecosystems, native plantings, and pathway improvements. To aid in fostering respect and reconciliation with Indigenous communities, the plan features Indigenous design elements at key areas along the Greenway. In addition, the Indigenous Plan's metaphor of weaving has been applied to both the spatial and conceptual framework through the weaving pattern of the pathway. This design strategy further supports community understanding of the history of the land as well as supporting the development of a community that is accepting of diversity, and inclusive of Indigenous ways of knowing and being.

ABOUT THE PROJECT



ABOUT THE CAMPUS GREENWAY

The Campus Greenway (previously known as the Grand Promenade) will act as a vibrant academic and social hub along the primary east-west multi-modal pathway connecting buildings and public spaces on campus. The vision for the Greenway was established as a 'Big Move' in the UVC Campus Plan, 2016.

The Campus Greenway also represents a unique opportunity to address the Strategic Framework priority of increasing the vibrancy of campus life by enhancing the natural and built environment to create more opportunities for interaction and collaboration. It will contribute to the identity of the campus and also aid in fostering respect and reconciliation with Indigenous communities by contributing to a welcoming, inclusive campus environment for all.

ABOUT THE LANDSCAPE PLAN & DESIGN GUIDELINES

The Campus Greenway Landscape Plan & Design Guidelines will serve to report and coordinate the implementation of landscape and public realm improvements along the length of the Greenway. Improvements are expected to be phased and implemented over ten or more years.

The development of the Campus Greenway was guided by the Campus Plan, Strategic Framework, and the Campus Cycling Plan.



GUIDING PRINCIPLES

- 1 Embed Indigenous culture, language, history and connections to land into the design process.
- 2 Integrate mature and any new trees as key and defining features of the Campus Greenway.
- 3 Create a variety of outdoor spaces integrated with the Greenway that support social and academic interaction.
- 4 Ensure design reduces conflicts between pedestrian, cyclists and service vehicles.
- 5 Embed demonstrated sustainability practices into every design solution.
- 6 Ensure the design of the Campus Greenway responds to campus mobility and accessibility.
- 7 Ensure any design responds in a meaningful way to adjacent buildings and broader campus connectivity.
- 8 Ensure the entire extent of the Campus Greenway is a safe, secure and inclusive path during all times and weather conditions.
- 9 Ensure all material are durable, regionally appropriate and adaptable over time.
- 10 Ensure design presents a cohesive vision and narrative of the entire Campus Greenway.
- 11 Ensure design supports learning opportunities.
- 12 Ensure proposed design is economically sustainable and will be maintained over time.

PROJECT SCHEDULE



PROJECT SUMMARY

THE CONCEPT

The conceptual and spatial framework of the Campus Greenway is largely inspired by the Indigenous Plan metaphor of weaving.

We envision a place where the metaphor of weaving and the multi-modal pathway connect people and place, and create a sense of community. We envision a place where the metaphor of weaving and the multi-modal pathway connect people and place, and create a sense of community.

WHAT WE'VE HEARD

- 44 Vegetation
- 44 Identity
- 44 Sustainability
- 44 Connectivity
- 44 Safety and Transportation

THE BIG IDEAS

- The Greenway expresses a gradient of character
- The Greenway (and people) take precedence
- The Greenway has a heart
- The Greenway is green in character
- The Greenway is a place not just a corridor
- The Greenway tells a story

TELL US WHAT YOU THINK!

DESIGN TOOLKIT

A KIT OF PARTS

A kit of parts provides for a consistent material and planting palette to be provided across the Greenway.

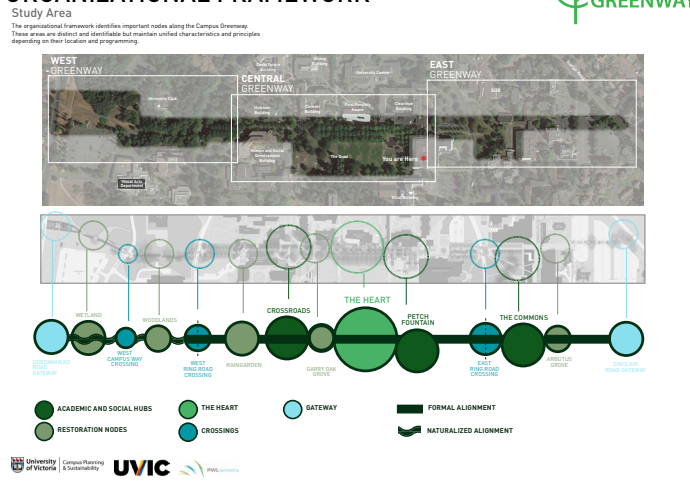
HOW IT WORKS

Recommended design strategies are provided on concept plans to guide future decision making.

TELL US WHAT YOU THINK!

Share your thoughts on the design toolkit and provide feedback on the design strategies.

ORGANIZATIONAL FRAMEWORK



ORGANIZATIONAL FRAMEWORK

ACADEMIC AND SOCIAL HUBS

The Academic and Social Hubs support the Campus Plan's objective to encourage collaboration, interaction and innovation through outdoor meeting places.

DEFINING STRATEGIES

- Create more meeting areas, both formal and informal, to support academic and social interaction.
- Provide spaces that can be adapted to various times of day, seasons, weather etc. by enhancing lighting, comfort and personalization.

RESTORATION NODES

The Restoration Nodes are distinct places where sustainability and ecological identity are emphasized.

DEFINING STRATEGIES

- Use the restoration, restoration or restoration of ecological identity as the key design driver.
- Embed and enhance sustainable materials, processes and systems with a focus on sustainability.
- Include interpretive panels.
- Provide knowledge that support contemplative nature experience.

GATEWAYS

The Gateways are important thresholds that announce your arrival on the UVC Campus and the Greenway.

DEFINING STRATEGIES

- Enhance the sense of welcome and arrival at gateways as well as the sense of arrival at the Greenway.
- Include interpretive panels and signage to support the sense of arrival.
- Include a variety of seating and lighting to support the sense of arrival.

CROSSINGS

A guiding design principle of the Greenway is that people and cyclists take precedence at all intersections and crossings. Each crossing is distinct and identifiable and maintains unified characteristics and principles.

DEFINING STRATEGIES

- Where the Greenway intersects with vehicular roads, ground plane treatment to enhance the sense of arrival and arrival at the Greenway.
- Include a variety of seating and lighting to support the sense of arrival.
- Include a variety of seating and lighting to support the sense of arrival.

THE HEART

The Heart is the largest row of large trees adjacent to the Quad is one of the campus' most valuable assets and the heart of the Greenway.

DEFINING STRATEGIES

- Protect and enhance the health and vitality of the existing trees by preventing compaction, increasing soil volume and providing irrigation.
- Create opportunities to sit under the trees.
- When the existing trees are removed, increasing pedestrian safety and traffic and other 'heart' trees through the heart.

THEMES IN COMMENTS

INDIGENOUS CULTURE

"I think the importance of Indigenous focus is another step towards reconciliation"

"Focus on student participation, but more so must ensure programs are in place to provide space for Indigenous peoples to work on the land, if they want to"

"Be sure to work Indigenous community on campus when considering Indigenous plants. Get the experts on board!"

"The focus on Indigenous plants really makes me happy. I love the Garry Oaks and can't wait to see it in action."

"Including indigenous concepts is amazing. I fully support it."

SEASONALITY + COMFORT

"What about rain cover?
Shade cover?"

"Think about smell"

"Comfortable, wooden benches with backs!"

CAMPUS IDENTITY + WAYFINDING

"Tells a story of identity and welcome"

"How does it impact navigation / wayfinding on campus as infrastructure?"

"Work with Welcome Center to develop programming opportunities and wayfinding elements"

"More opportunity for EDUCATION through architecture and upgrades. Provide notes on the history, the past, our present and future of the relationship with the land."

"Love the new name!"

THEMES IN COMMENTS

SUSTAINABILITY AND RESILIENCE

"Enhance infiltration of precipitation into the substrate to accommodate annual precip. patterns and reduce runoff"

"Consult with the Environmental Studies Permaculture Class!...Sustainable and self-sufficient!"

"Add more plants adapted to our current and PROJECTED climate - let's reduce cost / time / effort of landscaping"

"Motion-sensor lighting! Saves energy and creates less light pollution!"

"Presents a good opportunity for a sustainability focused university."

"Instead of choosing 'low maintenance' trees choose native trees like Willows that require human maintenance and incorporate into classes such as ethnobotany. Let the students learn outside!"

"Timber should be reclaimed, large focus should be placed on environmental impact of construction"

SOCIAL + LEARNING OPPORTUNITIES

"[Social and Academic Hubs] are great and much needed"

"More outdoor classrooms!"

"I love more places to site and socialize outside"

"Adding new areas and more to create interactions will build bigger, stronger communities within campus, which is something we need. Love it!"

"Academic, social hubs are awesome. Can also be used for co-curricular programming (tours, student training, orientation, clubs, etc.)"

VEGETATION

"Edible native plants. Possibly some elements of permaculture and food security."

"More edible plants along the Greenway!"

"Less Grass"

"Research specifically threatened species"

WEST CAMPUS GREENWAY

Draft Landscape Plan

The West Campus Greenway is characterised by the protected natural area of Bowker Creek, the University Club Pond, and a naturalized (winding) pathway alignment. This area was identified in the Campus Cycling Plan as an opportunity to improve the connection to the centre of campus from Gordon Head Road via a separated pedestrian and cyclist path.

DRAFT LANDSCAPE PLAN - WEST

LEGEND:
 PROPOSED TREES
 EXISTING TREES

KEY FEATURES:
 GORDON HEAD ROAD GATEWAY
 BOWKER CREEK HEADWATER
 W. CAMPUS WAY CROSSING
 WOODLANDS
 W. RING ROAD CROSSING
 RAINGARDEN

EXISTING:
 - Improve pedestrian and cycling access to campus to consolidate the District of Saanich.
 - Introduce signage, lighting, art and wayfinding elements to provide a more welcoming experience.

INSPIRATION:
 - Utilize the headwater of Bowker Creek.
 - Focus on enhancing ecological performance and integration opportunities.
 - Introduce Indigenous art at key locations along the path.

W. CAMPUS WAY CROSSING:
 - Improve greenway alignment to shorten crossing distance.
 - Provide separated pedestrian and bicycle crossings.
 - Retained curb solution.
 - Introduce stop signs on roadway to control traffic.

WOODLANDS:
 - New seating area and platform overlooking University Club pond.
 - Wide pathway to accommodate separated bike and pedestrian lanes per the Campus Cycling Plan.
 - Enhance ecological performance and educational learning opportunities.

W. RING ROAD CROSSING:
 - A wide pedestrian and cyclist crossing.
 - Widened curb solution.
 - Pedestrian-activated push button flashing signal.
 - Transition from separated to shared space pathway.

RAINGARDEN:
 - Utilize defined alignment and low point of the Greenway to create a node that integrates stormwater into an amenity.
 - Opportunity to incorporate wetland planting with educational components.
 - Seating platform that provides opportunities for teaching, learning, socializing, etc.

TELL US WHAT YOU THINK!

University of Victoria | Campus Planning & Sustainability | UVIC | PWVL

"Restoration of Garry Oak ecosystems in areas which are now lawn"

"Think about cyclists / pedestrian sitting areas that avoid conflict"

"The existing is sad and doesn't show who we are. The new look makes UVic more welcoming"

"I like the added water features and focus on Indigenous plants."

WHAT WE HEARD

In general, attendees supported the enhancement of natural conditions along the west campus greenway and feedback encouraged more naturalized areas outside the proposed restoration nodes. The feedback supported the separated pathway for cyclists and pedestrians.

SUMMARY OF PRIORITIES

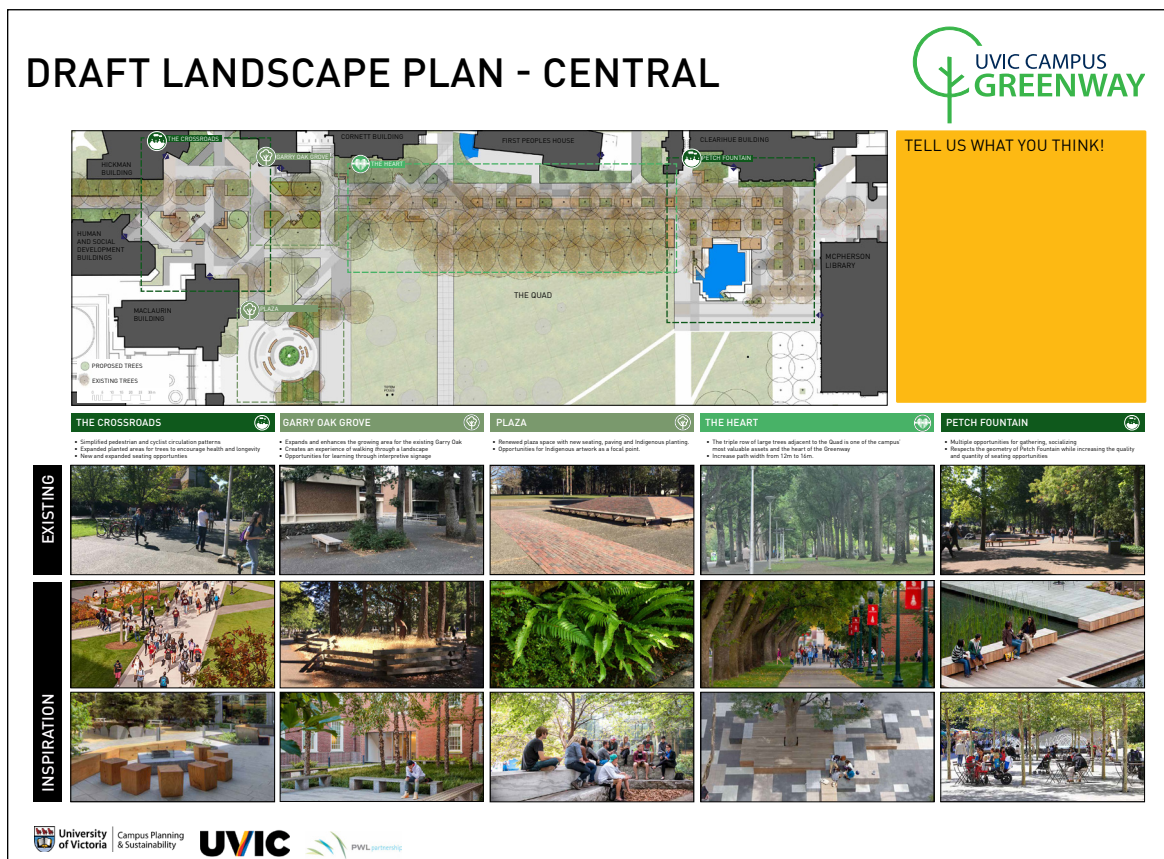
High priorities for the area include:

- Ensure pedestrian and cyclist safety are prioritized along the pathway and at intersections.
- Enhance restoration of ecosystems and provide educational opportunities through interpretive signage and engagement with relevant campus faculties.

CENTRAL CAMPUS GREENWAY

Draft Landscape Plan

The Central Campus Greenway was identified as 'the Heart' due to its adjacency to First People's House, Petch Fountain, the Quadrangle, and the triple row of mature oak trees. During Phase 1, the health and well being of the oak trees in this area was identified as a key concern. To preserve and enhance tree health, protection of the root zones through seating and planting is proposed as well as irrigating the trees through the summer months.



"More trees --- keep people from walking on root area"

"More teaching areas, outdoor classrooms"

"Our campus right now is sad. We need this new Greenway"

"Increase permeable surfaces"

WHAT WE HEARD

Attendees supported the proposed designs to protect tree health and longevity. Additionally, there were many verbal and written responses that indicated support for more areas to sit, study and socialize. Comments that focused specifically on the Quad were not included in this summary because that area is beyond the scope of this plan.

SUMMARY OF PRIORITIES

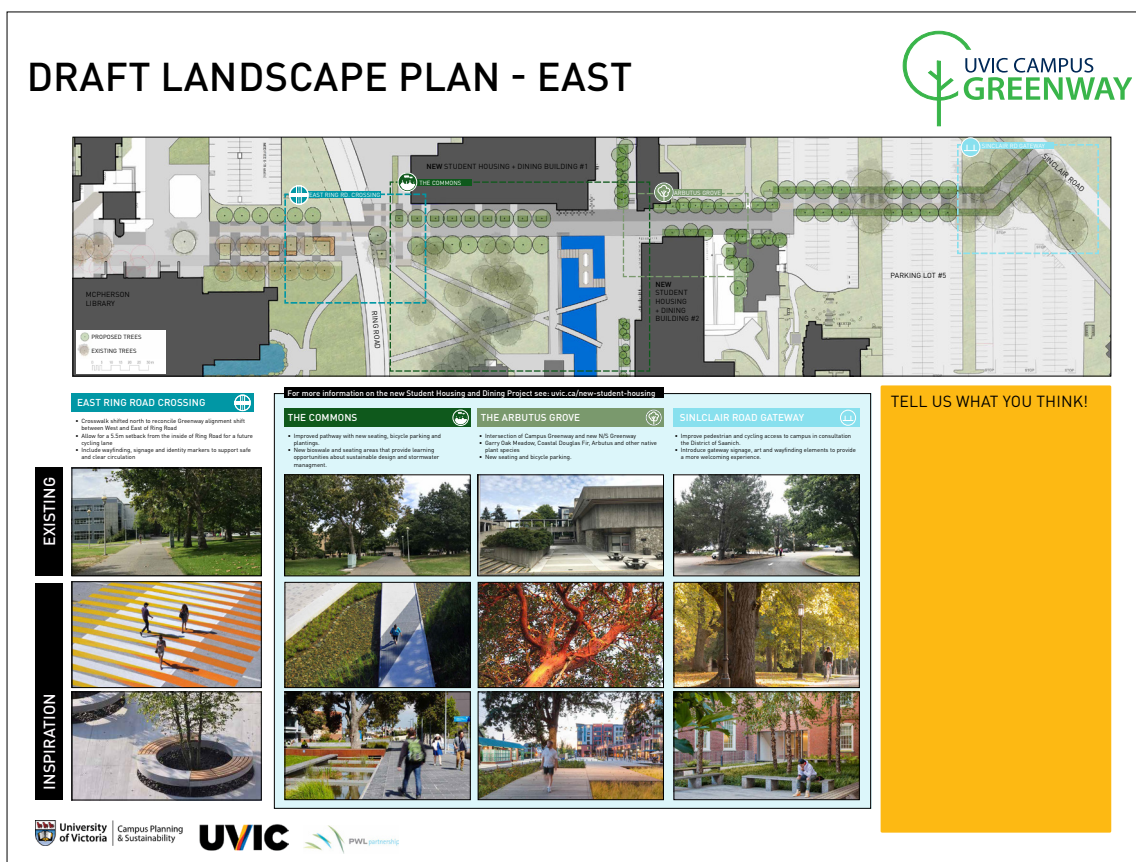
High priorities for the area include:

- Decrease soil compaction through edge protection to ensure health and longevity of existing mature trees.
- Providing more comfortable social seating and academic areas
- Explore opportunity to develop pedestrian priority zone by limiting or preventing vehicle traffic through signage, physical barriers and education.

EAST CAMPUS GREENWAY

Draft Landscape Plan

The East Campus Greenway includes the development site of the future Student Housing and Dining Project. The landscape plan was presented to the community during the engagement process for the Student Housing and Dining project. Feedback received during these engagement events has been incorporated to create a consistent landscape plan across the entire extent of the greenway.



"Edible plant garden supported by the campus community garden"

"I think the inclusion/ integration of more natural features is not only appealing but beneficial for students' mental, physical and spiritual health"

"Outdoor classroom space!"

"I love the idea of incorporating more native plants and using environmental strategies for 'storm drains'"

WHAT WE HEARD

The Eastern extents of the Campus Greenway received minimal feedback compared to the Western and Central areas, perhaps because much of the area around the new Student Housing and Dining has already gone through a public consultation process. Much of the feedback that was given supported the inclusion of natural features that encouraged social interaction.

SUMMARY OF PRIORITIES

High priorities for the area include:

- Address the alignment shifts at Ring Road Crossing and Parking Lot 5.
- Enhance restoration of ecosystems and provide educational opportunities through interpretive signage and engagement with relevant campus faculties.

NEXT STEPS

NEXT STEPS

The feedback gathered from this Open House offered valuable input regarding the vision for the Campus Greenway. This feedback will be used to refine the Landscape Plan and confirm the general Design Guidelines moving forward.

The finalizing of the Landscape Plan and Guidelines will include internal reviews with Campus Planning and Sustainability, the Advisory Committee and the Facilities and Management Team over the summer months.

The final Campus Greenway Landscape Plan & Design Guidelines will serve to support and coordinate the implementation of landscape and public realm improvements along the length of the Greenway and will be presented at a Campus Open House in the Fall of 2019.

