An aerial photograph of a university campus. The campus is a mix of modern and older buildings, mostly in shades of brick and concrete, interspersed with green lawns and trees. To the left, there are sports fields, including a green soccer field and a basketball court. A large parking lot filled with cars is visible in the lower-left quadrant. The campus is bordered by a dense forest. In the background, a large body of water, likely a bay or fjord, stretches across the horizon under a hazy sky. Distant mountains are visible on the far shore.

We acknowledge with respect the Lekwungen peoples on whose traditional territory the university stands and the Songhees, Esquimalt and WSÁNEĆ Peoples whose historical relationships with the land continue to this day.



National Centre for Indigenous Laws Fraser Building Expansion and Renovation



University
of Victoria

Schematic Design Follow up
January 20th, 2021

Agenda

- Land Acknowledgement
- Review Meeting Goals and Agenda
- Law Faculty feedback
- Consultant update
- Breakout Group Discussion
- Breakout Group Summary
- Next steps

links to key documents found at:
uvic.ca/fraserexpansion

Questions? Feedback?
planning@uvic.ca



University
of Victoria



Today's goals

- Follow up from Dec. 16th session
- Share refinements to the design based on law faculty feedback
- To communicate the next steps in Design Development



University
of Victoria



Responding to Feedback

- Natural Light and views
- Connection between programs and building
- Maintain the goals of the program

INTEGRATION THROUGH CIRCULATION

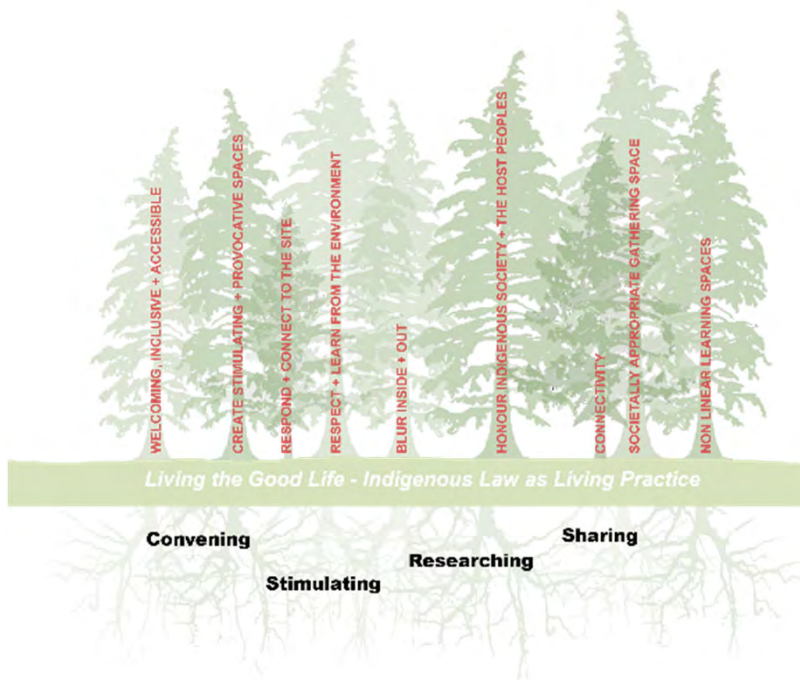
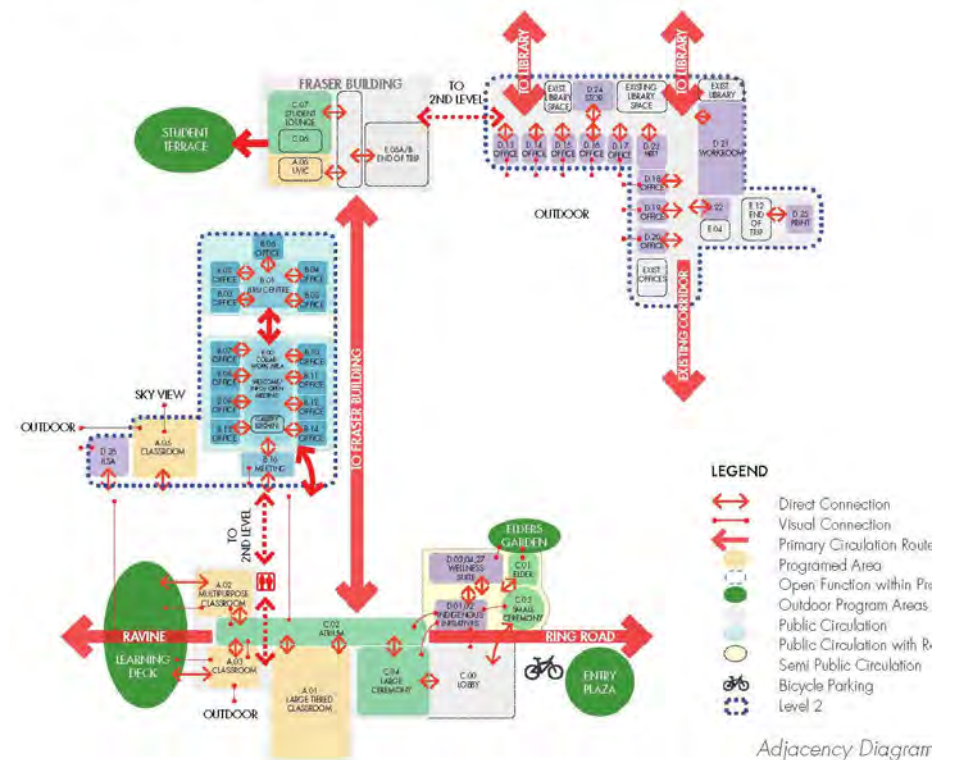
- New entry and circulation loop unifies the entrances and integrates the existing with the new.



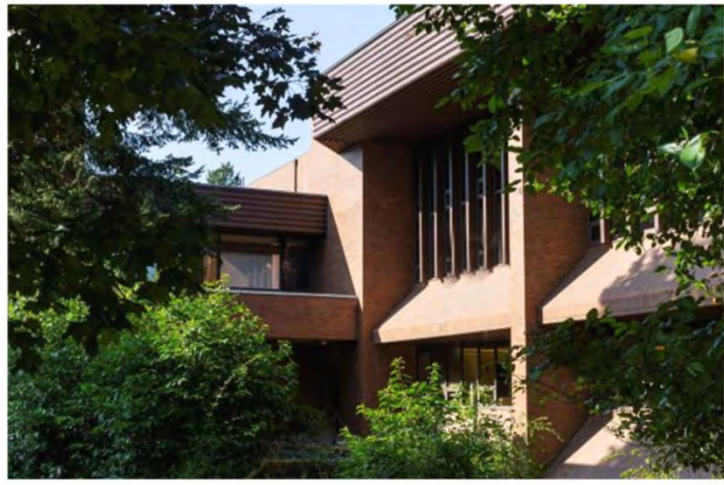
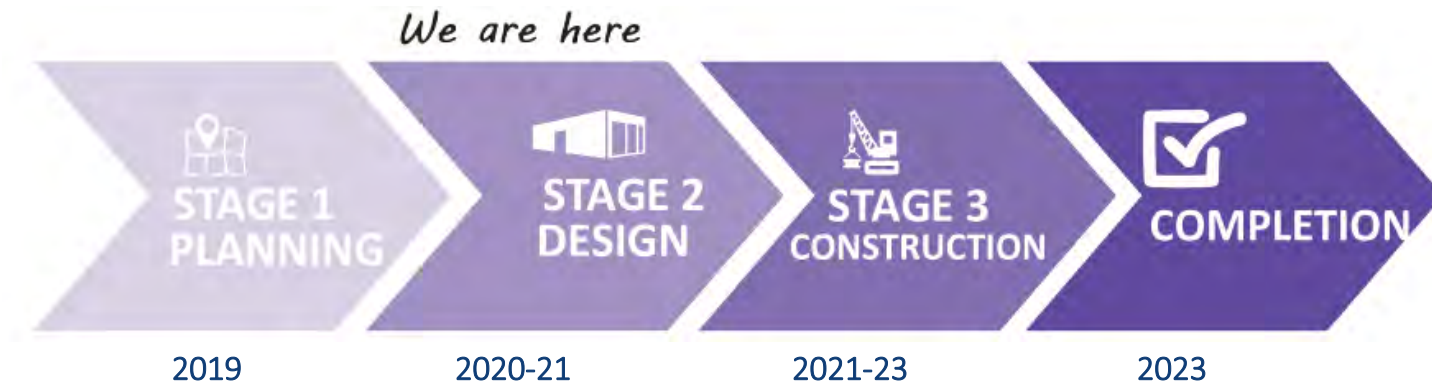
Project Process

- Vision & Program
- Feasibility Study

PROGRAM	NET AREA (m ²)	USE
A: SHARING	683	Learning spaces
B: RESEARCHING	346	ILRU (Indigenous Law Research Unit) + Environmental Law Spaces and Offices
C: CONVENING	1022	Ceremonial learning environments and affiliated support spaces
D: OFFICE SPACE	290	Faculty and Staff Offices, Meeting Rooms
E: SUPPORT	290	Washrooms and Service Spaces
TOTAL NET AREA:	2630	



Project Process



University
of Victoria

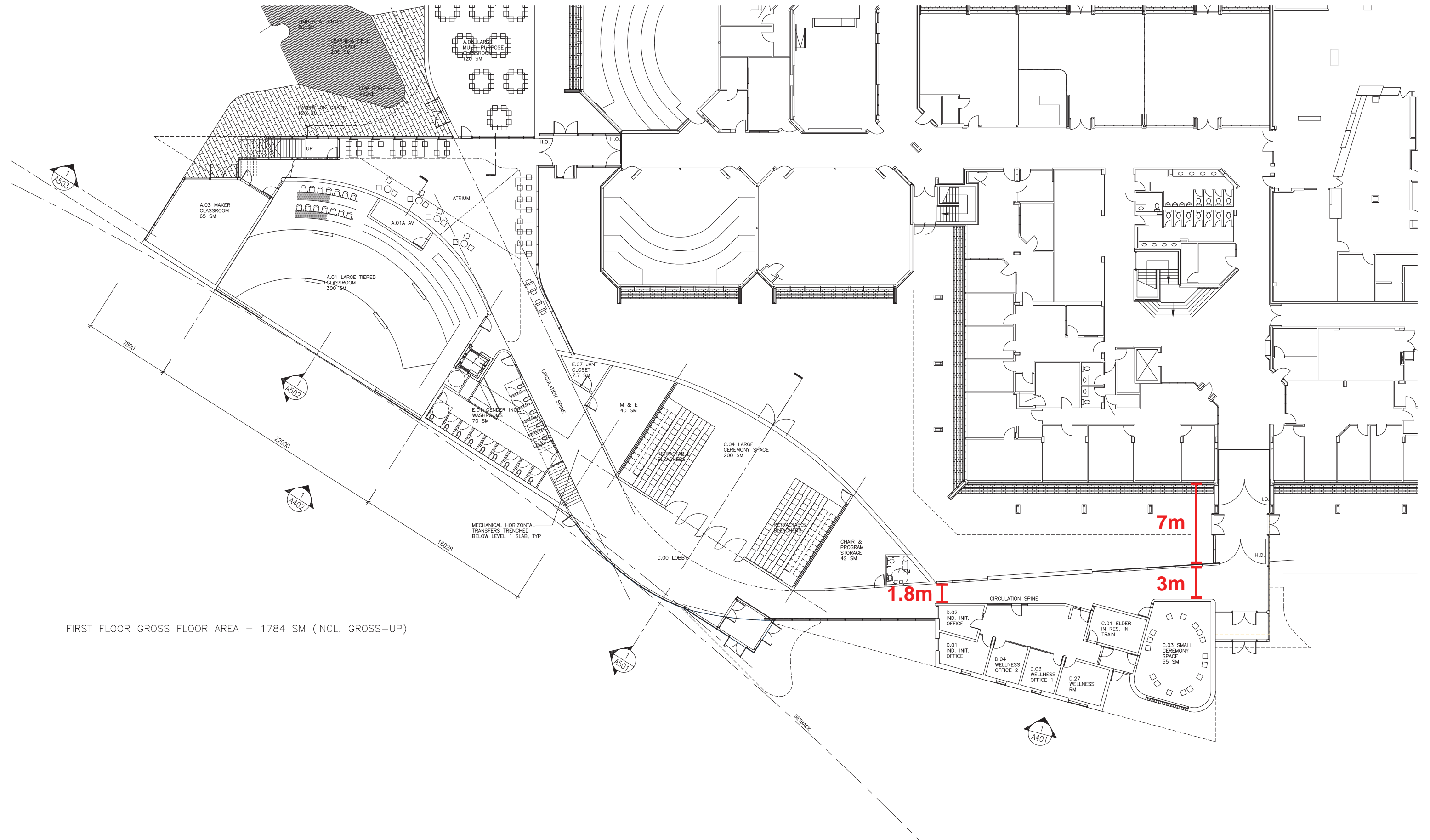


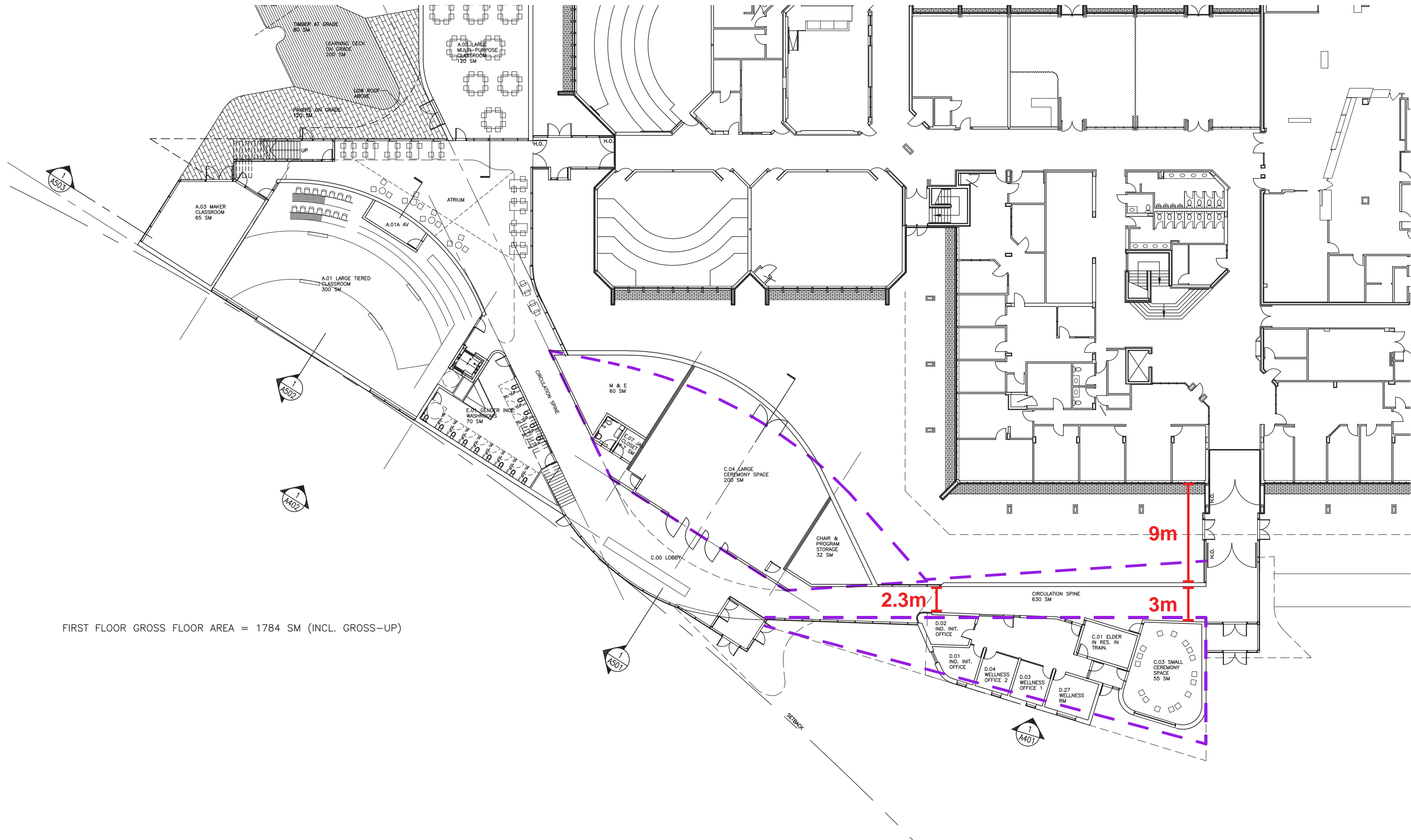
NATIONAL CENTRE FOR INDIGENOUS LAWS

FOLLOW UP WITH LAW STAFF & FACULTY





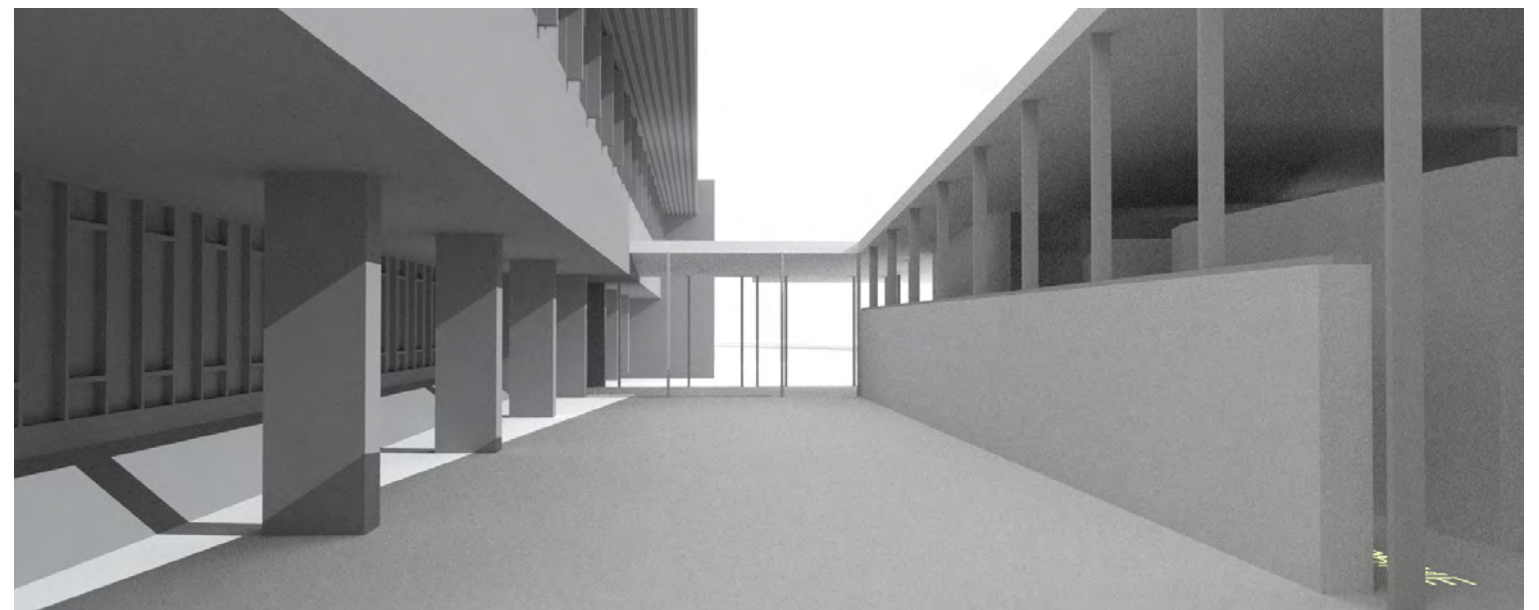




FIRST FLOOR GROSS FLOOR AREA = 1784 SM (INCL. GROSS-UP)

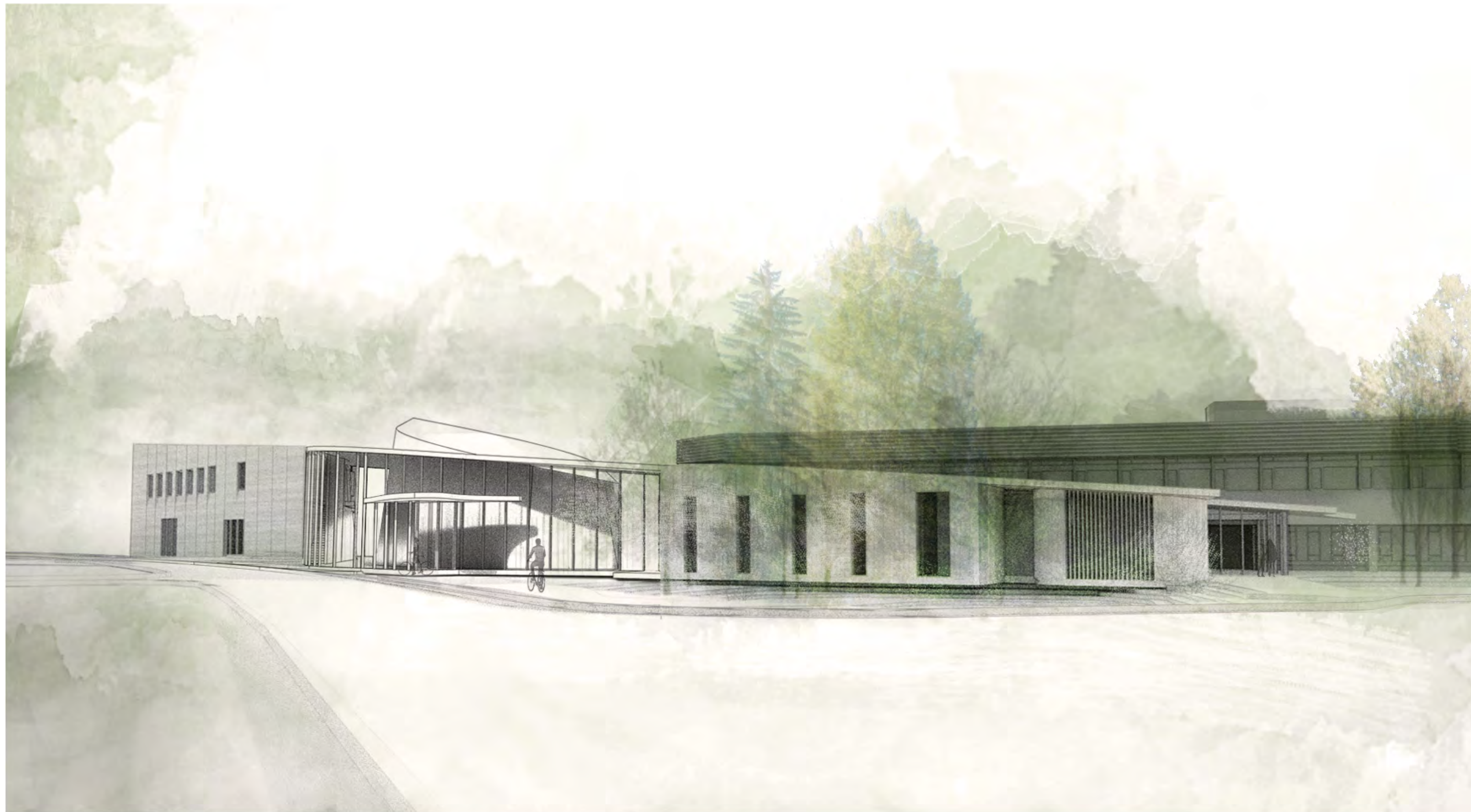


1 Current Scheme



2 Proposed Scheme



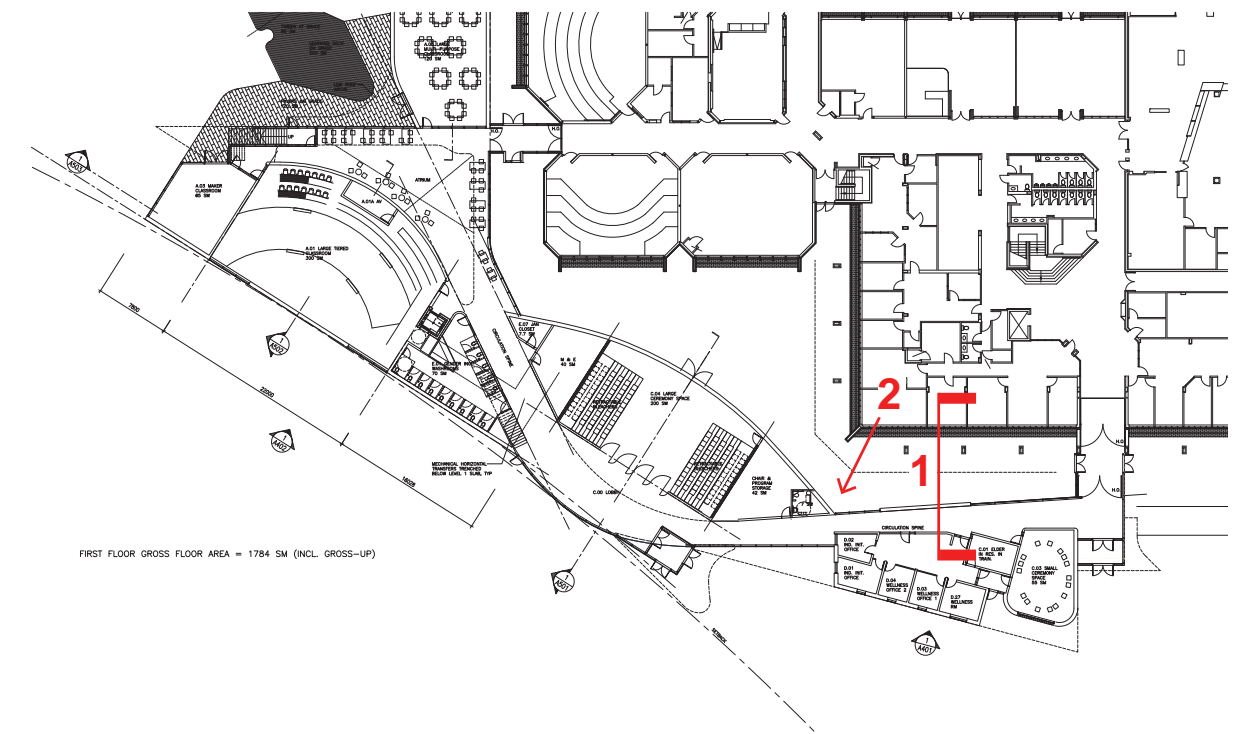




1 Section looking north



2 Second floor view from corner office

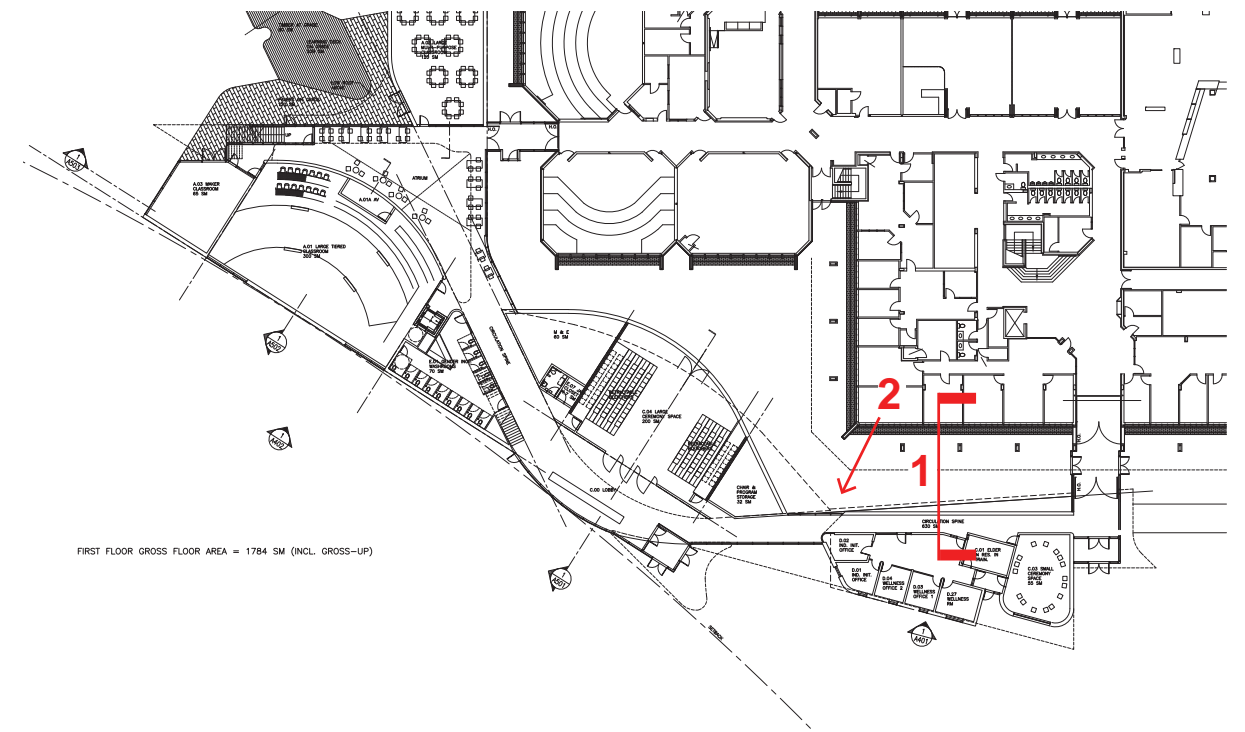


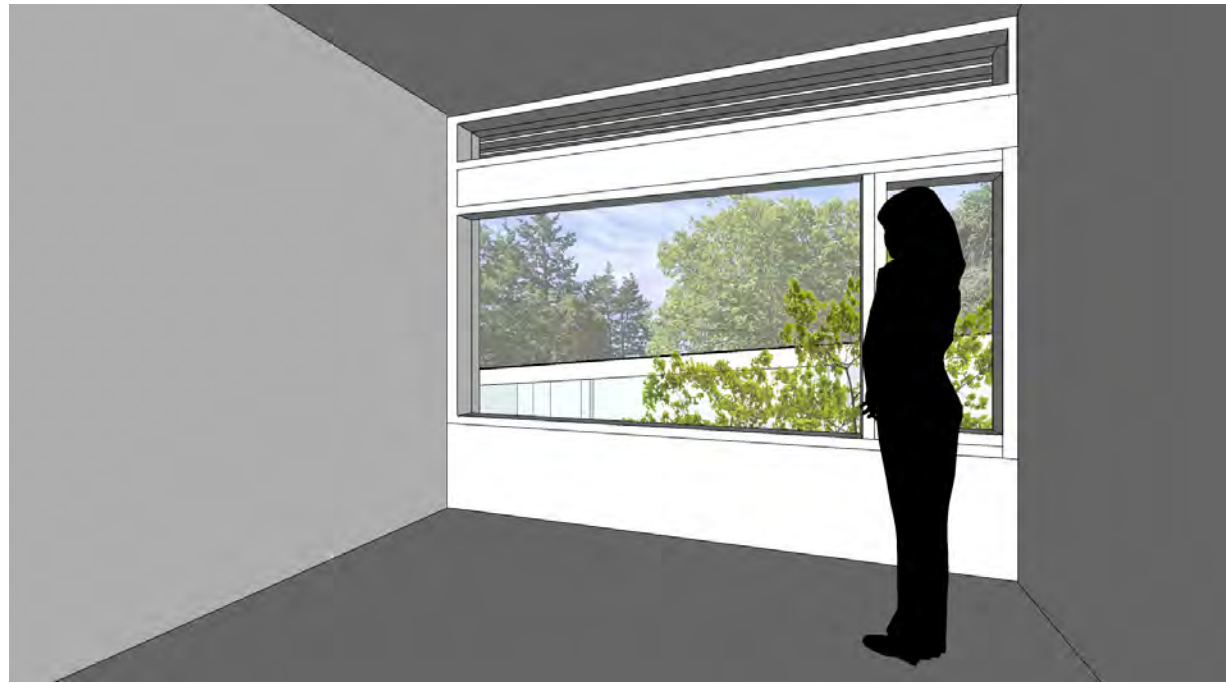


1 Section looking north



2 Second floor view from corner office

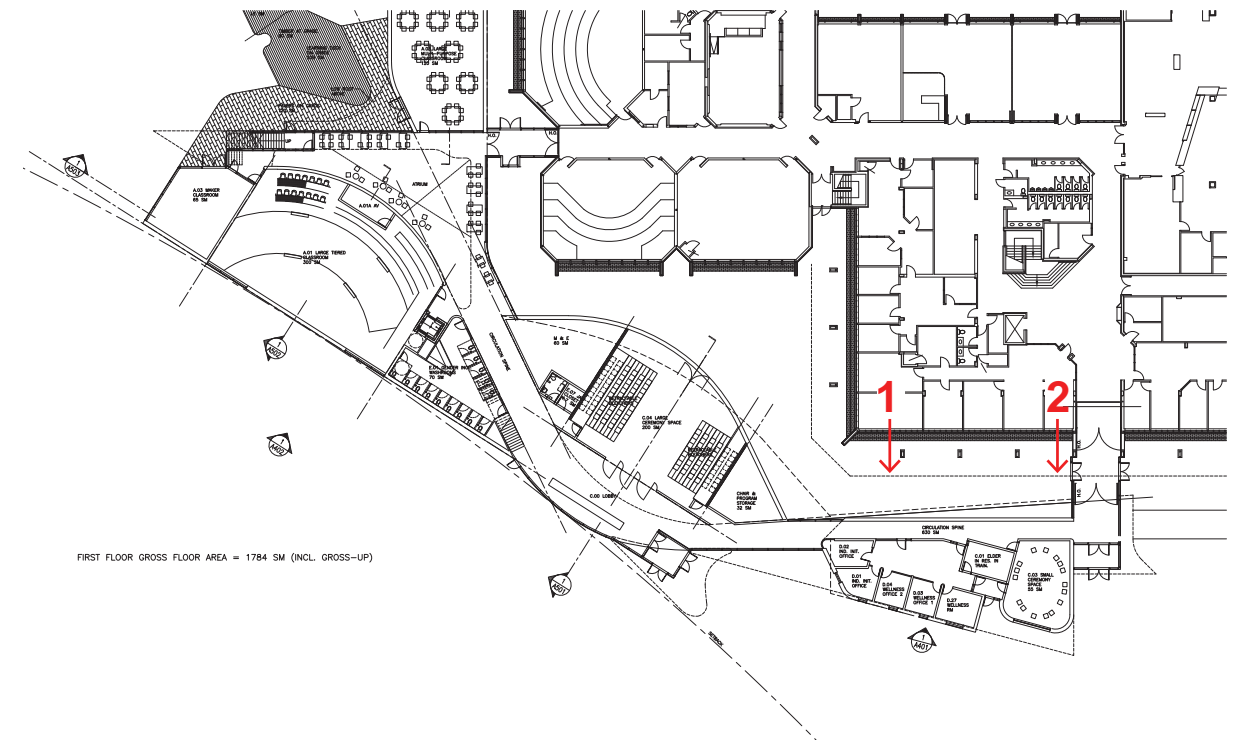




1 Second Floor View - North



2 Second Floor View - South



CONIFER



Western Hemlock

DECIDUOUS TREES



Pacific Dogwood



Vine Maple

TALL PLANTS



Tall Oregon Grape



Salmonberry



Saskatoon Berry

MID-HEIGHT PLANTS



Maidenhair/Sword Fern



Cotoneaster Shrub



Salaal



Oregon Grape

GROUND COVER



Wild Ginger



Cornus Canadensis



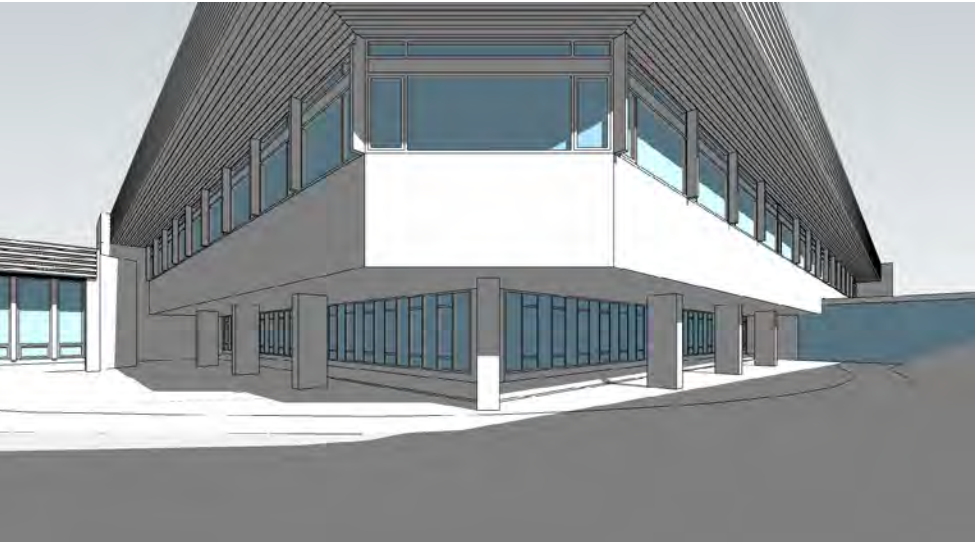
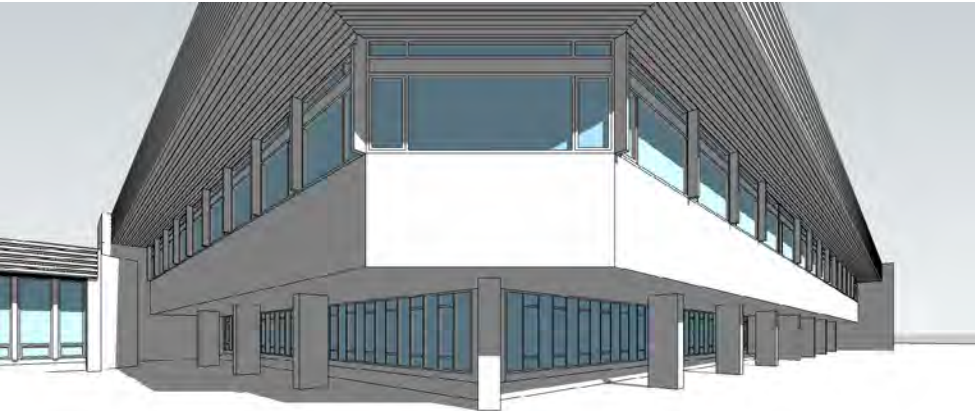
1 Ground floor view looking south



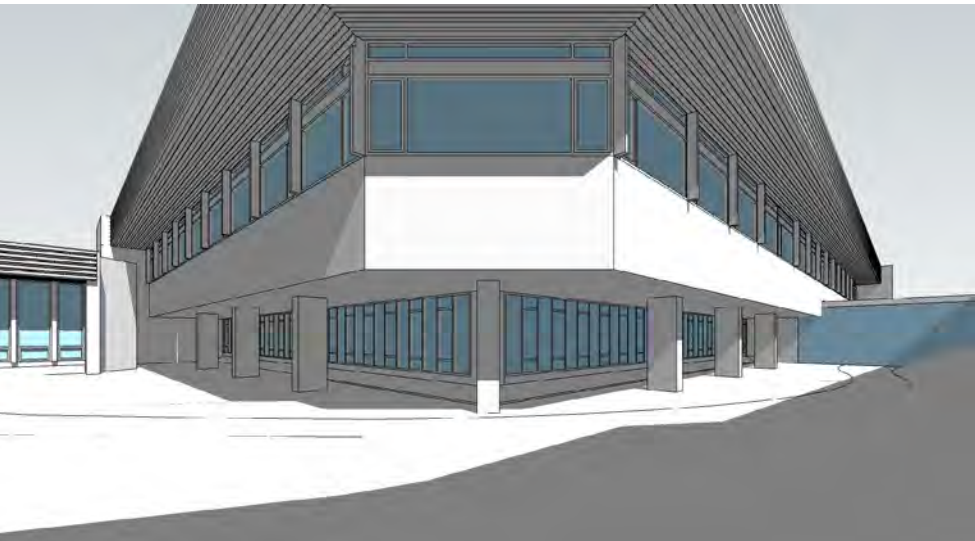
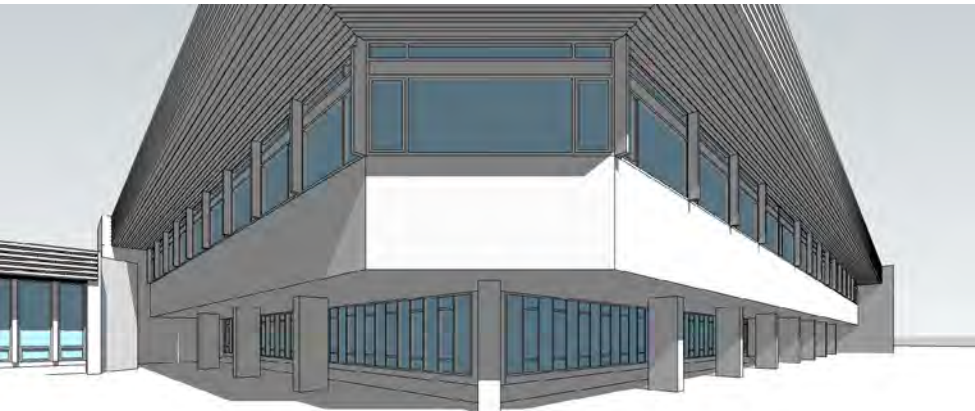
2 Ground floor view looking east



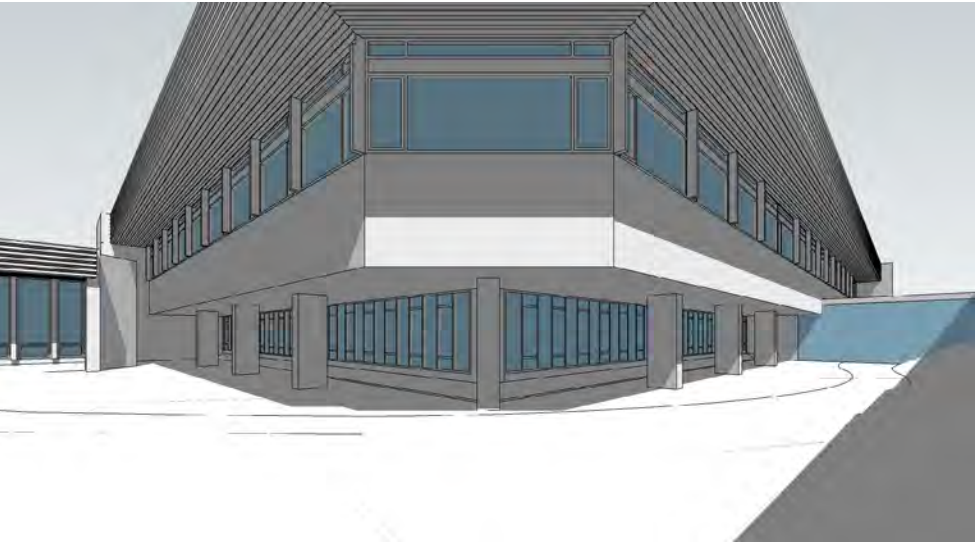
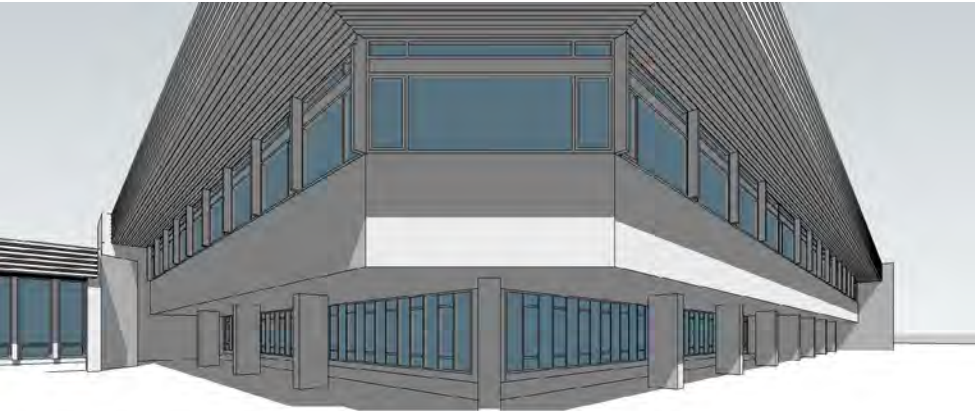
8 am



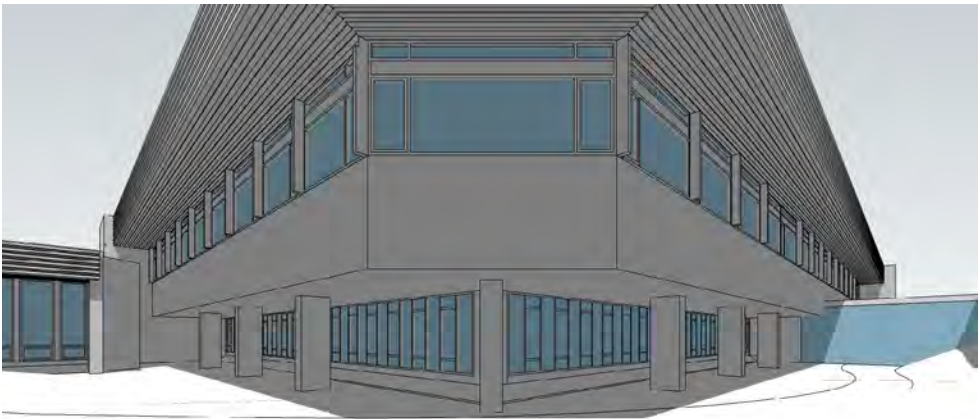
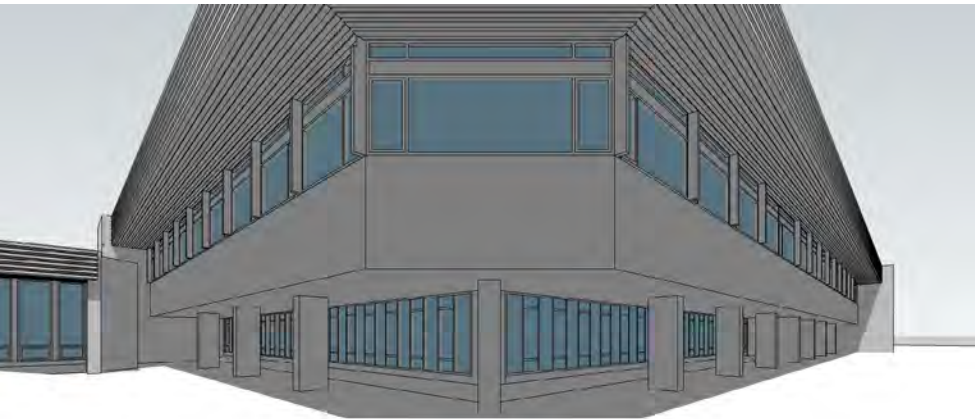
9 am



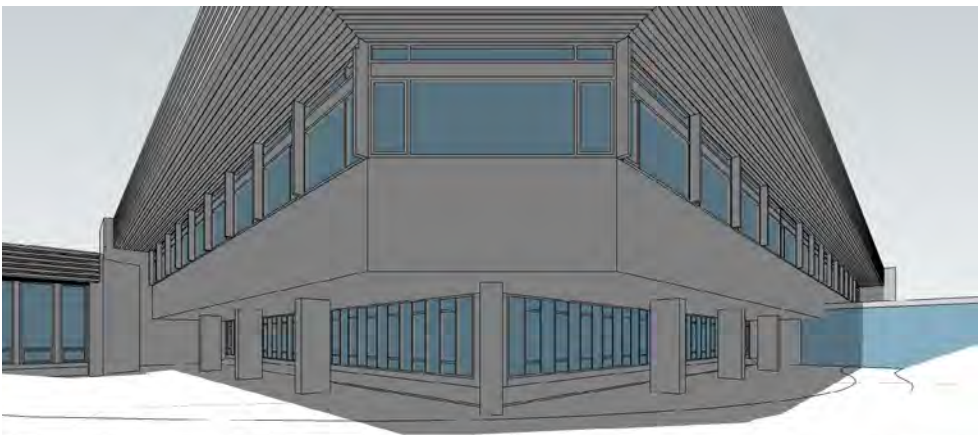
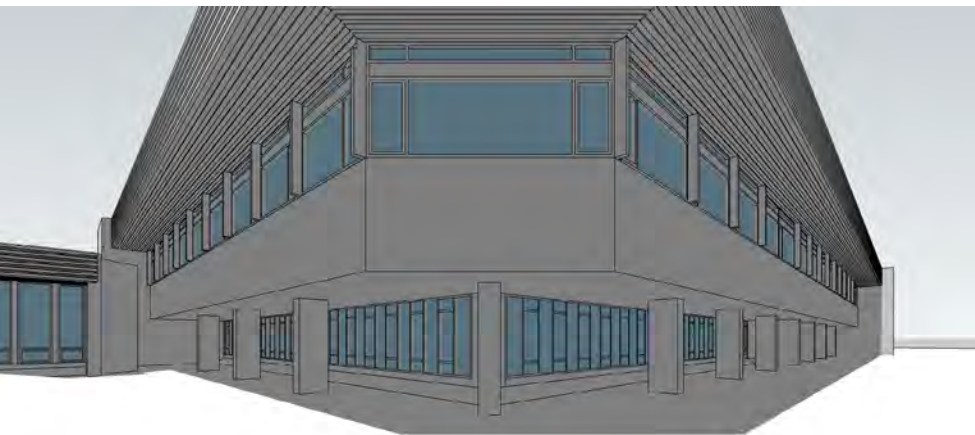
10 am



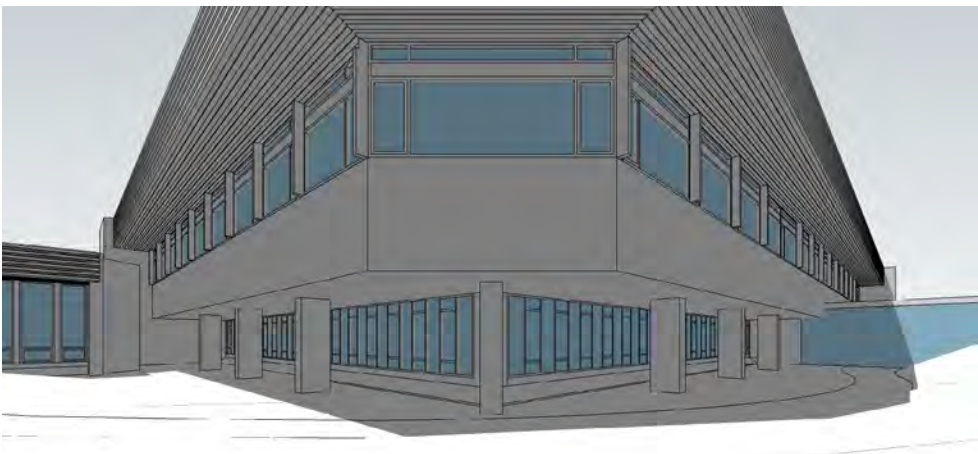
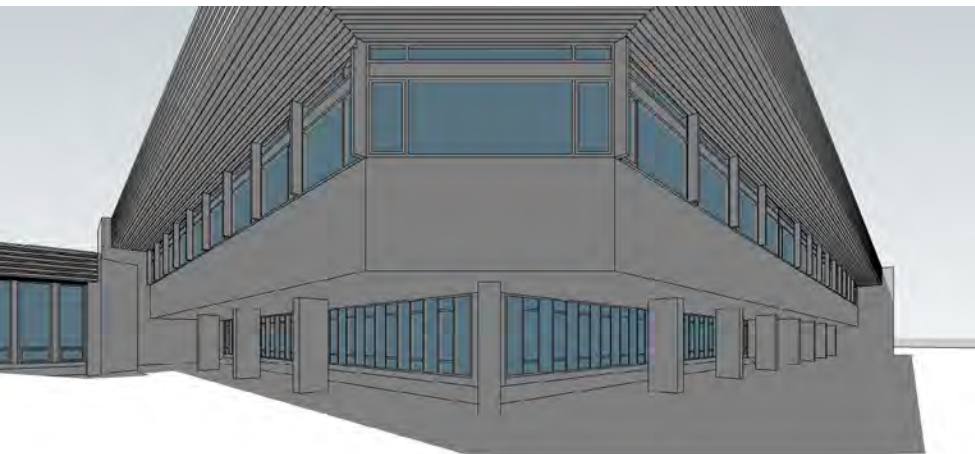
11 am



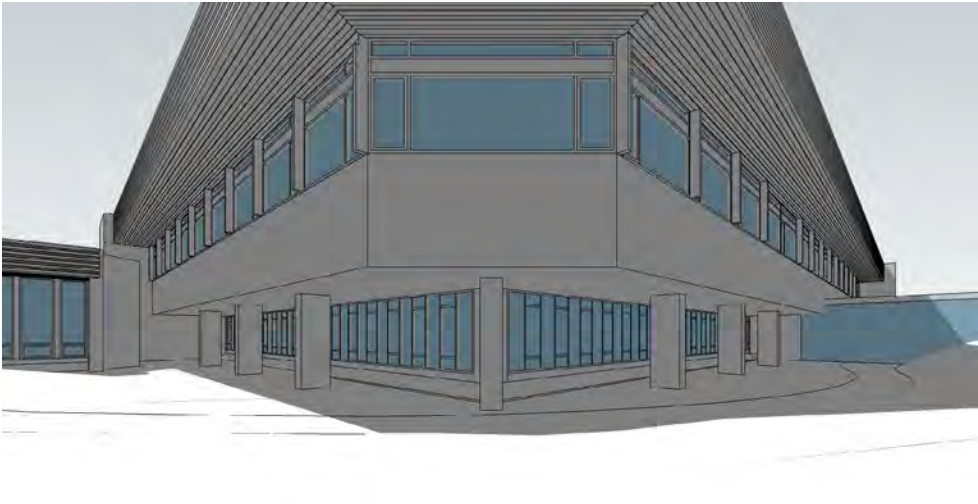
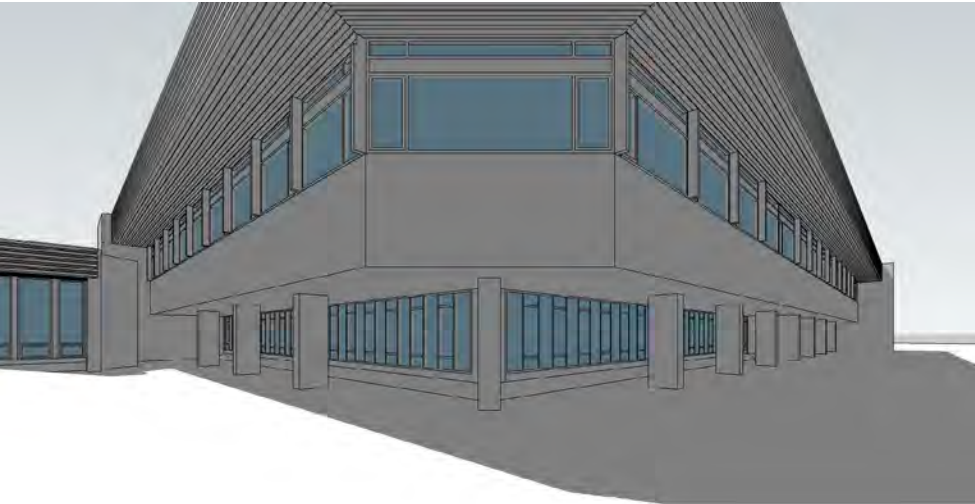
12 pm



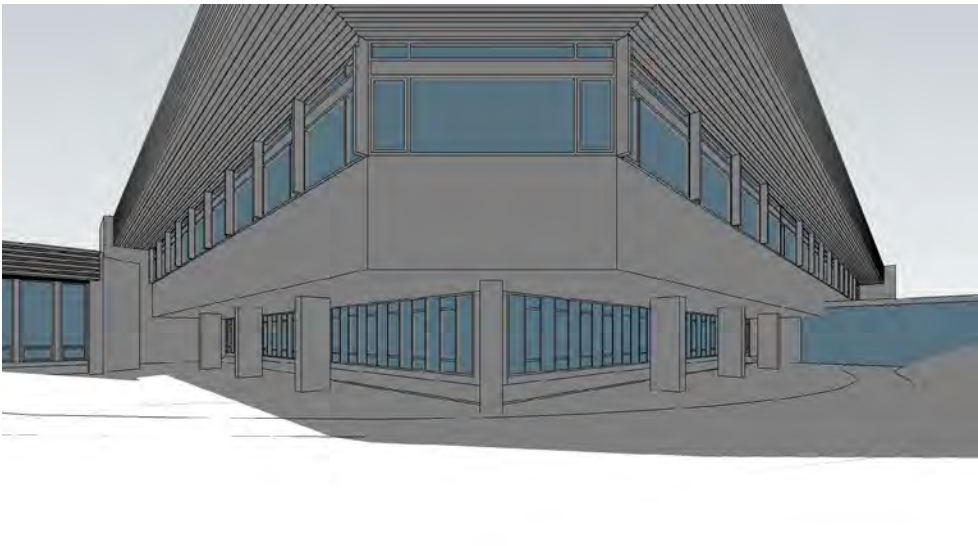
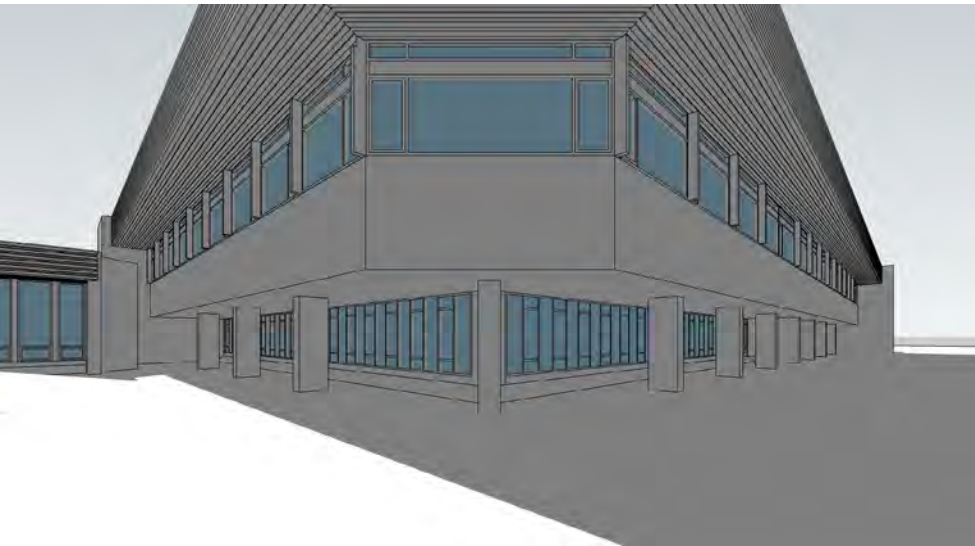
1 pm



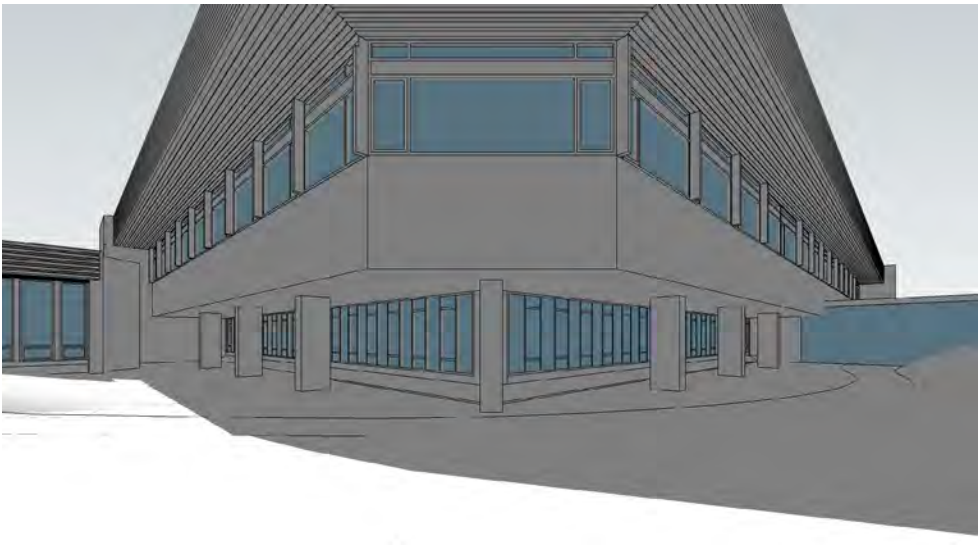
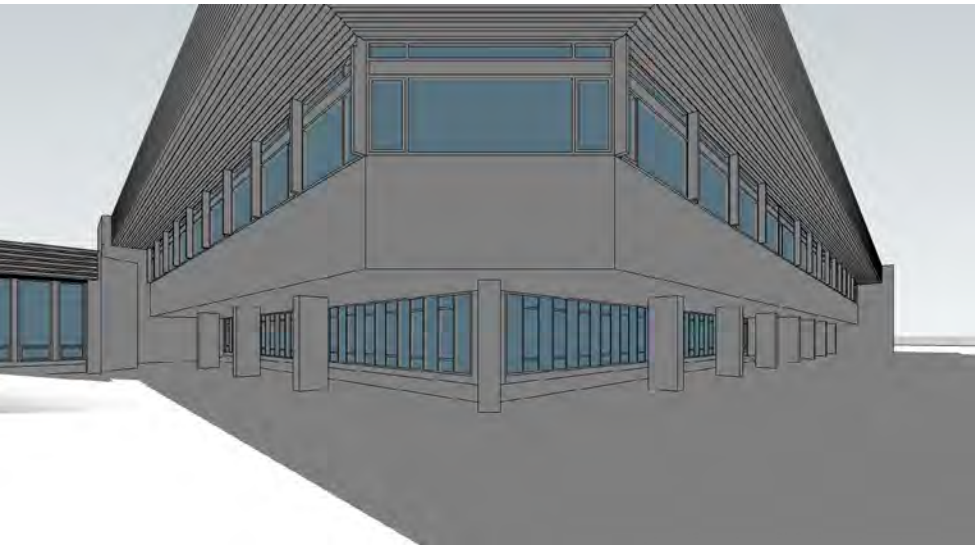
2 pm



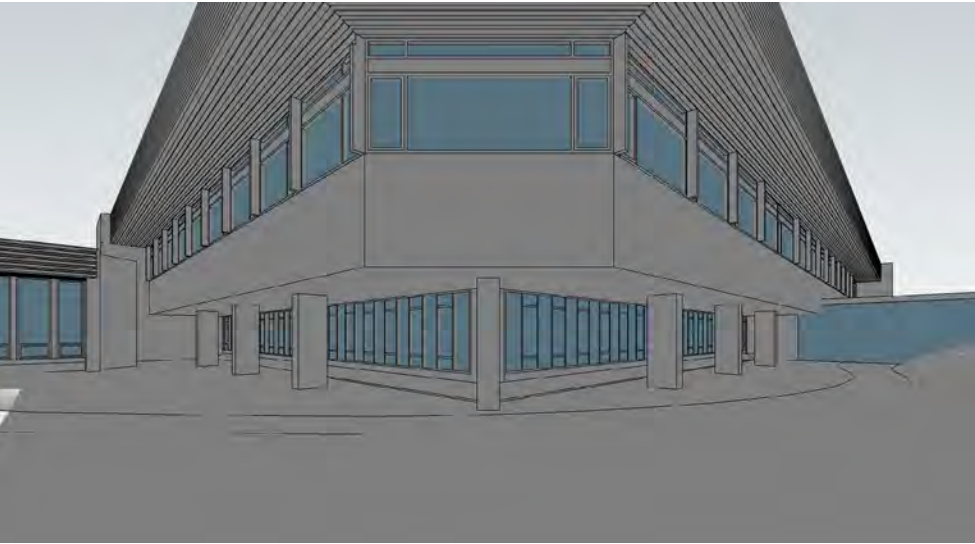
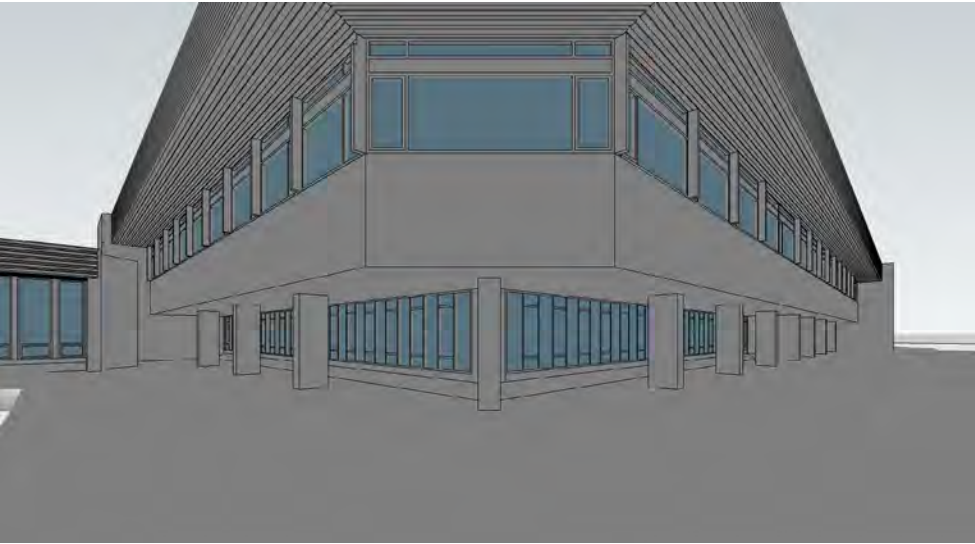
3 pm



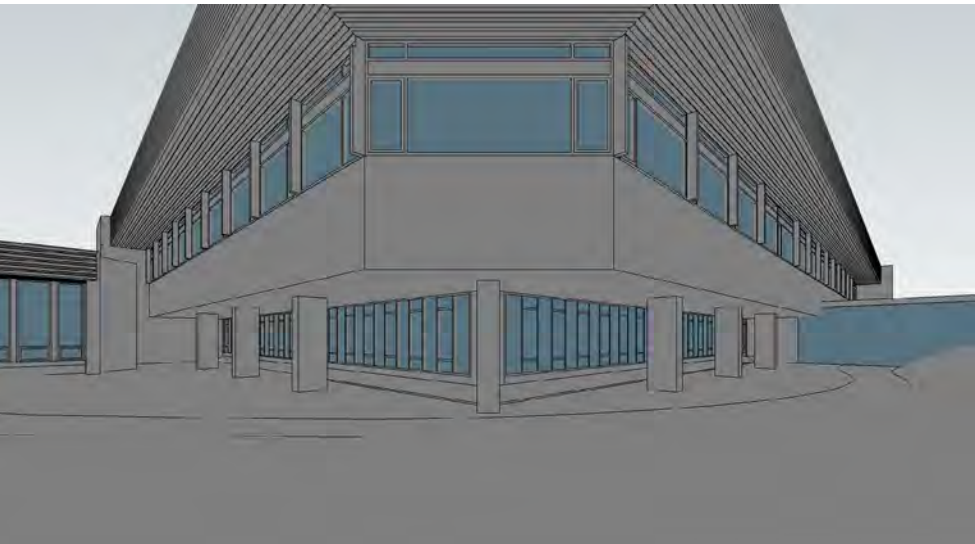
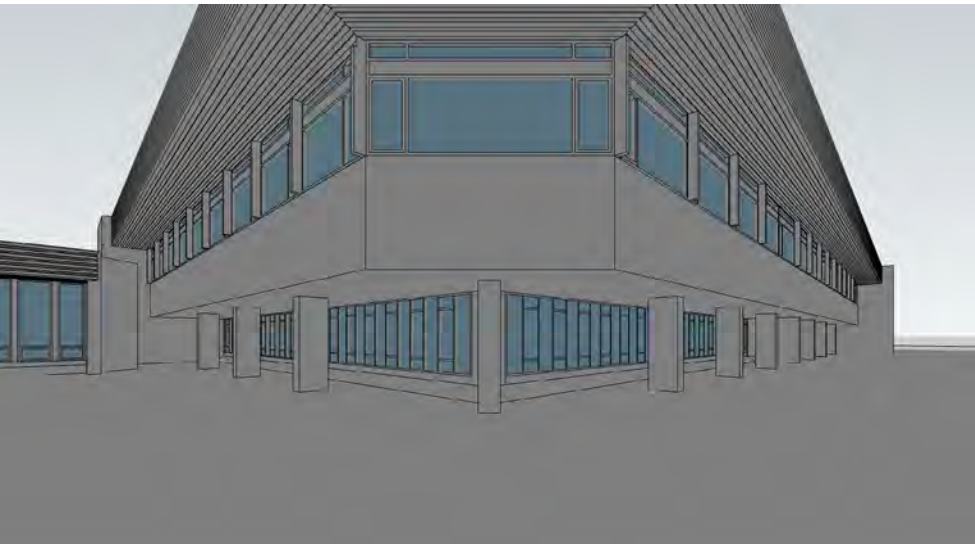
4 pm



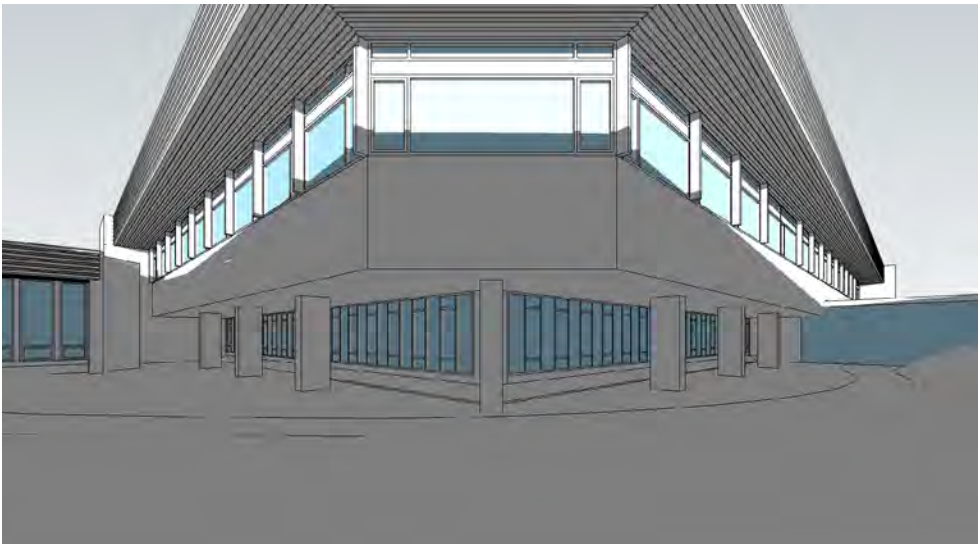
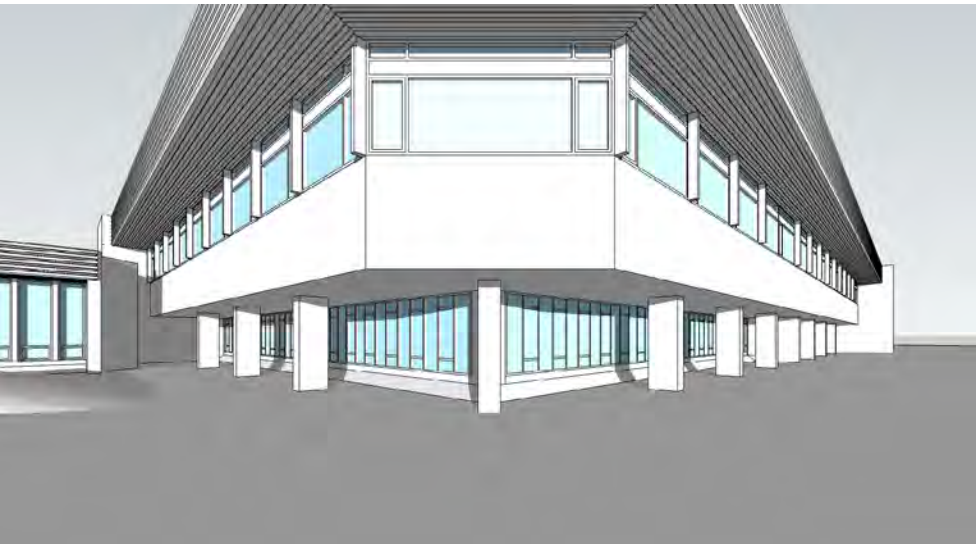
5 pm



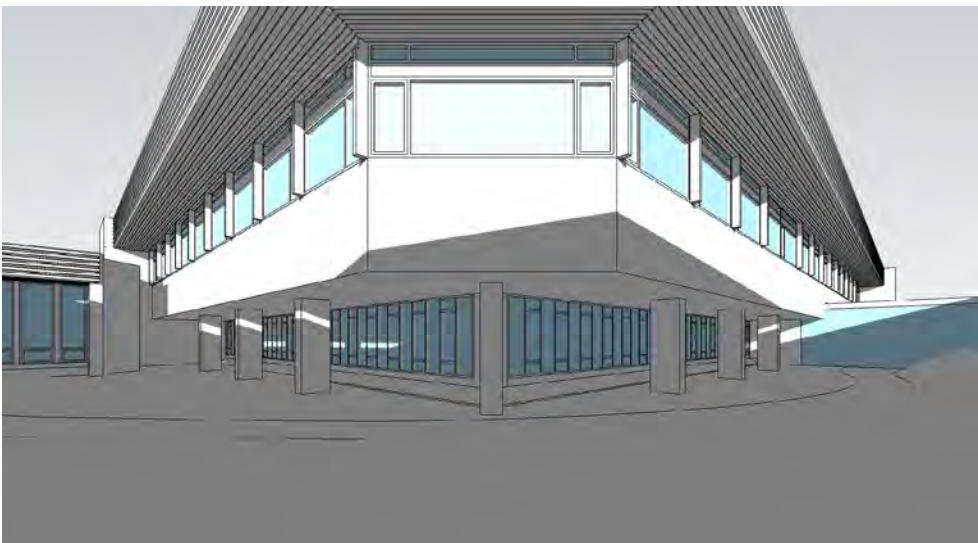
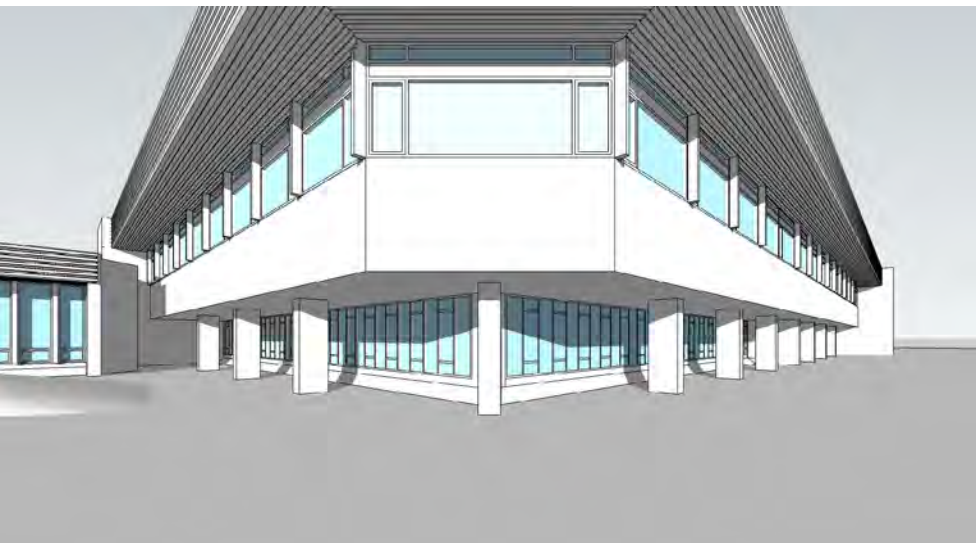
6 pm



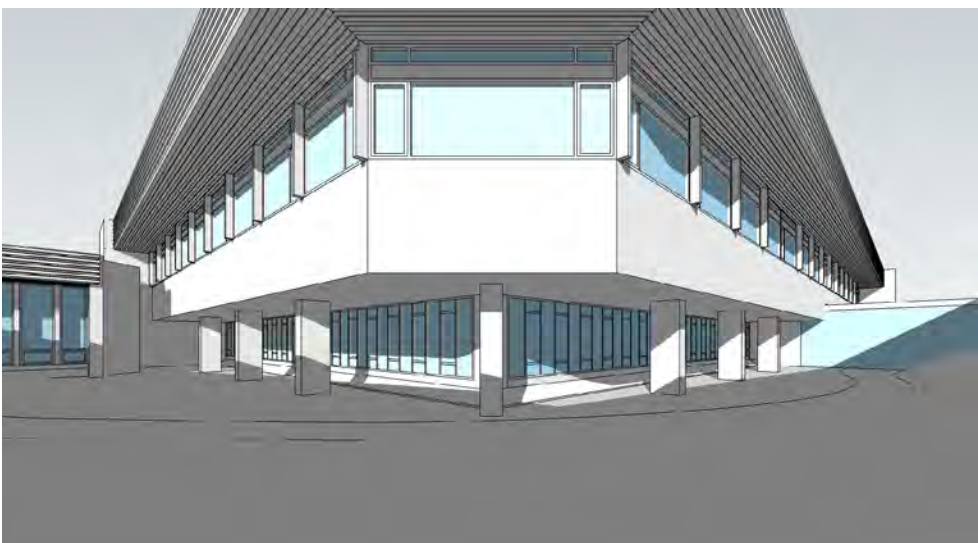
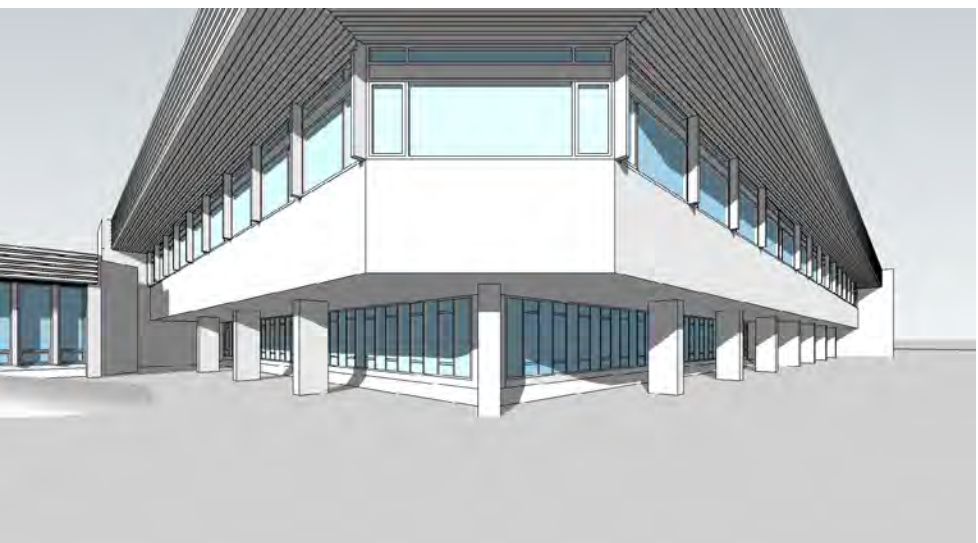
8 am



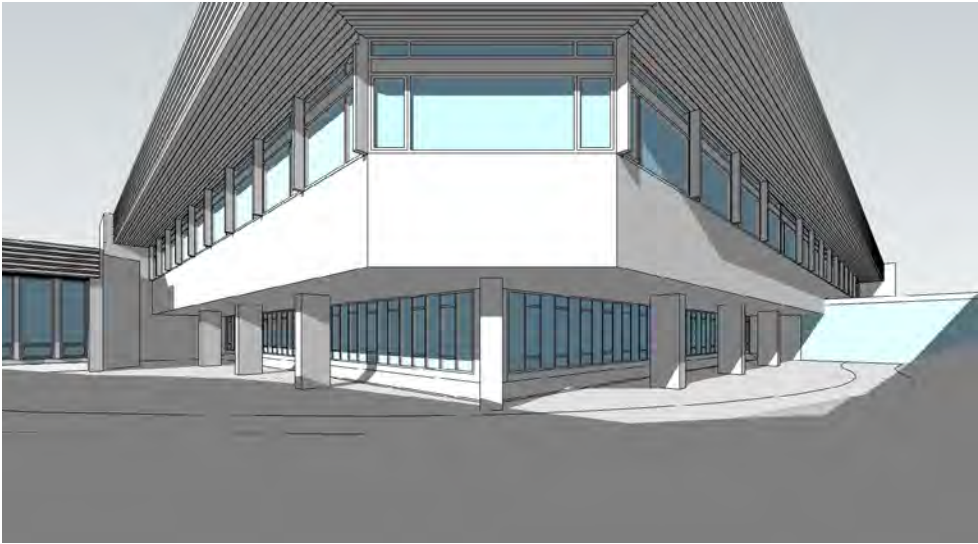
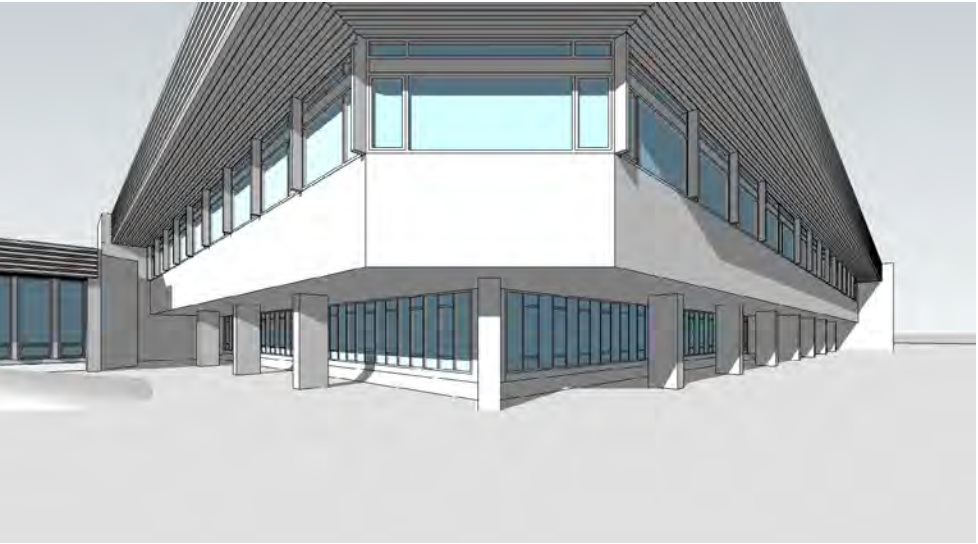
9 am



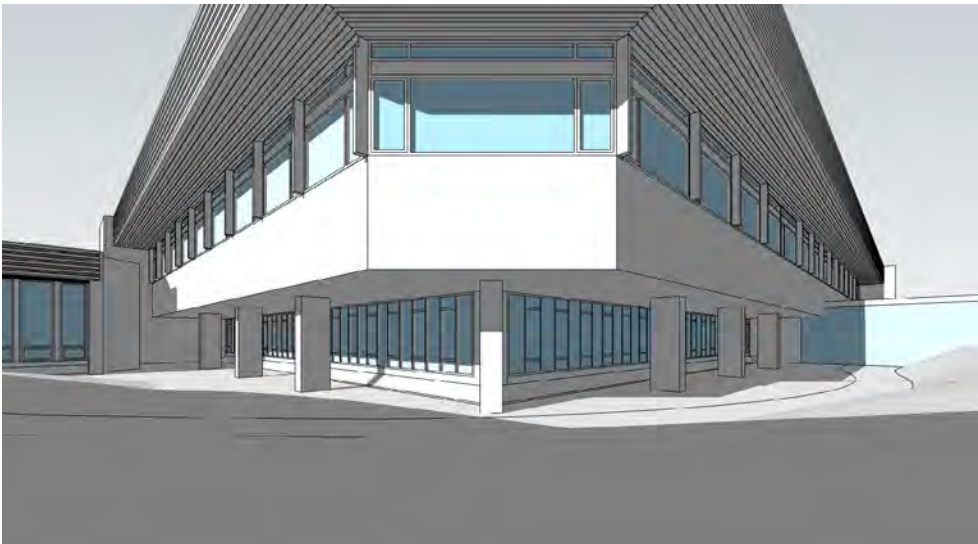
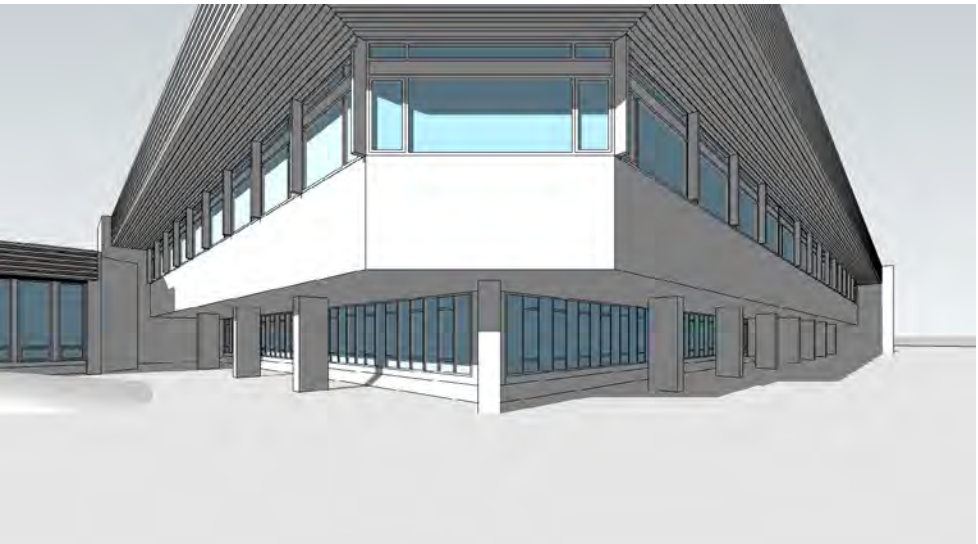
10 am



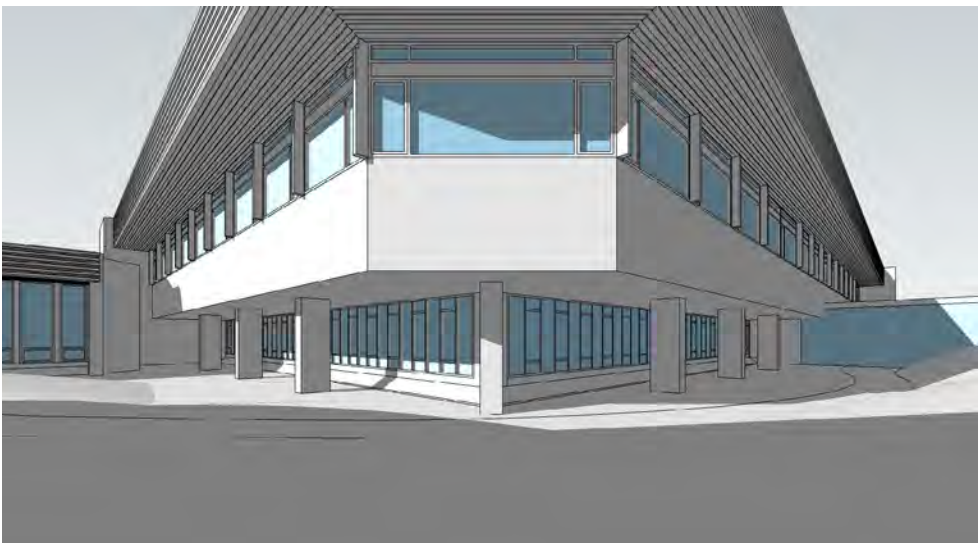
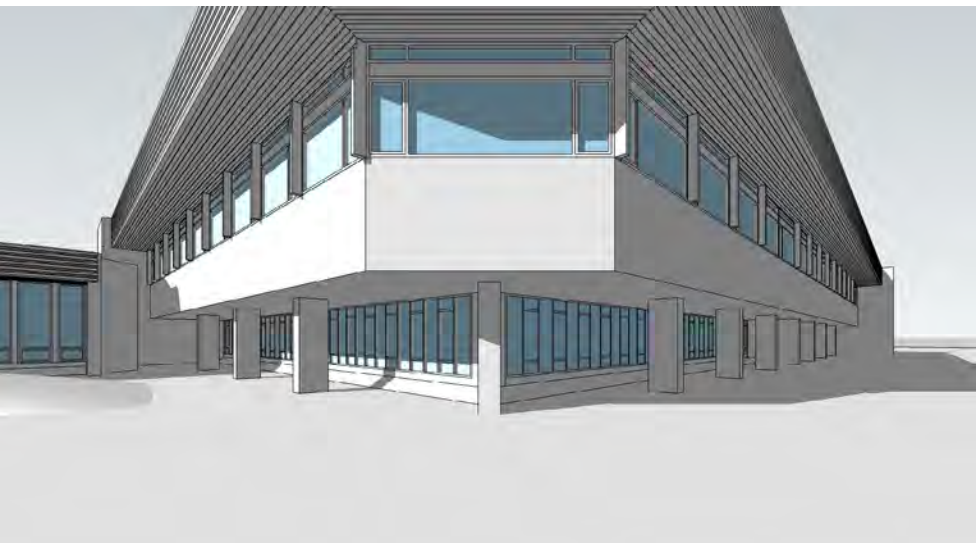
11 am



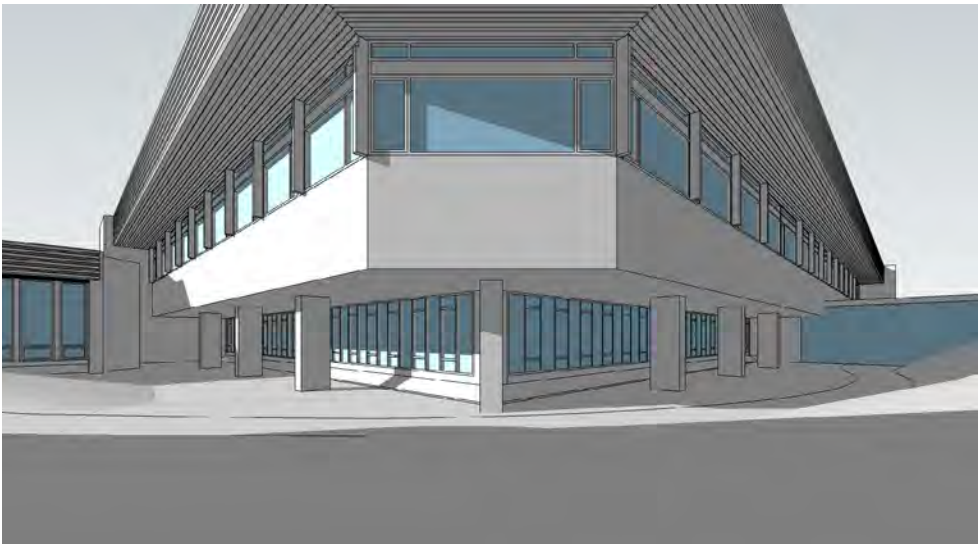
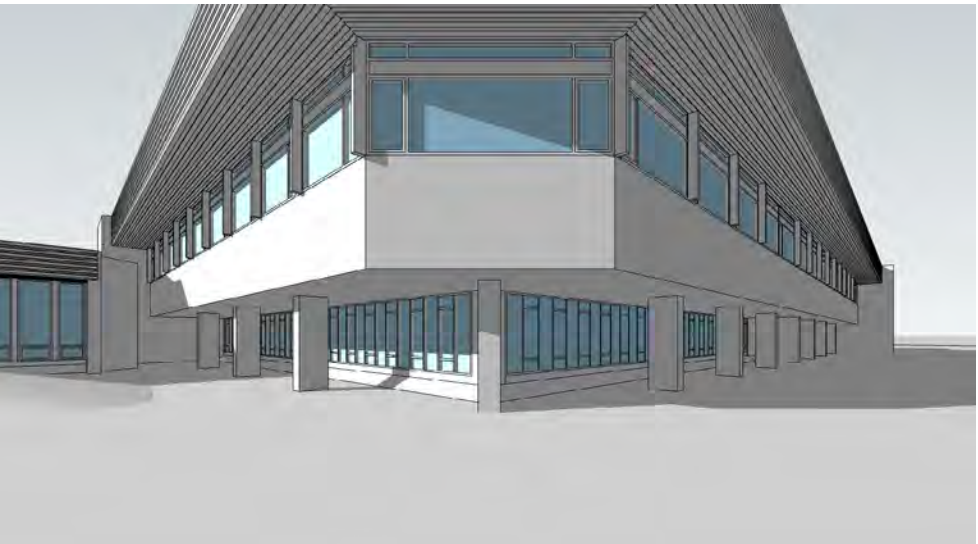
12 pm



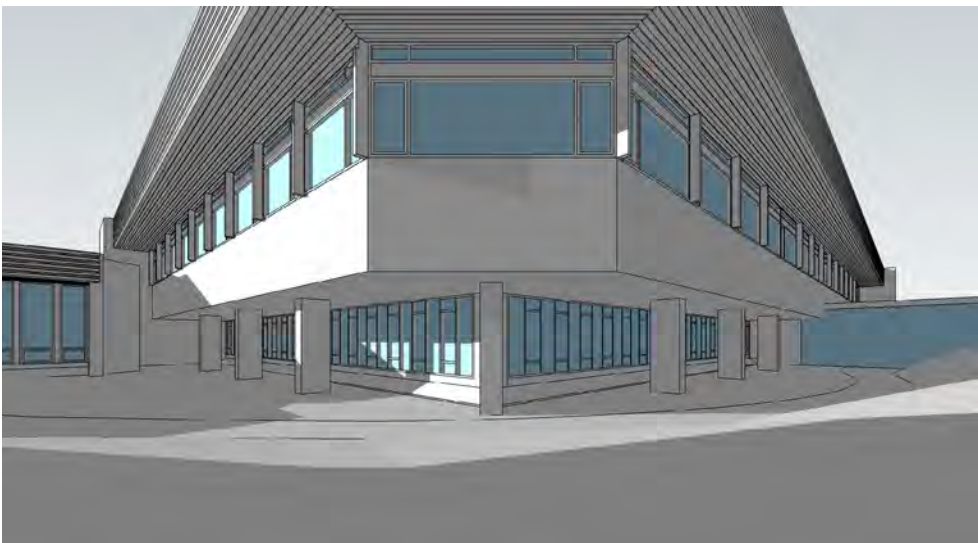
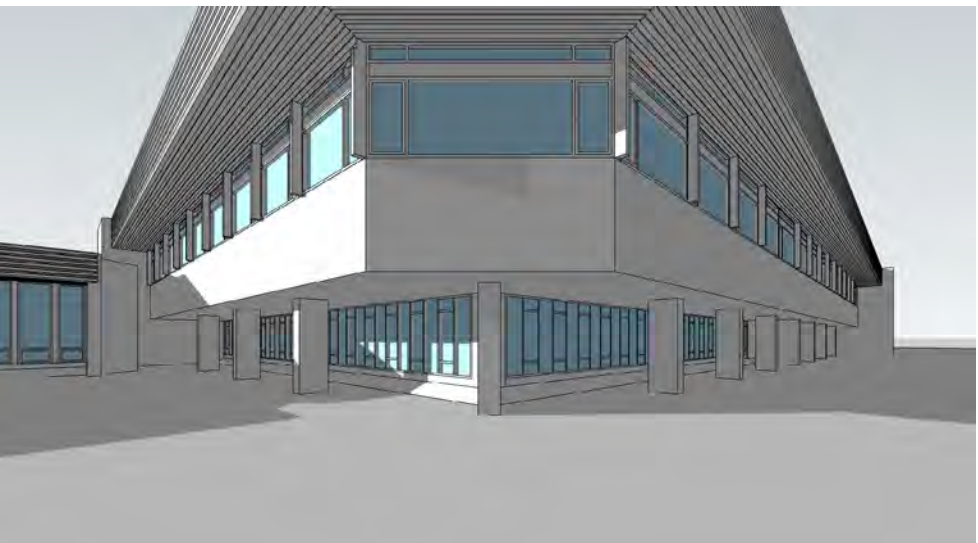
1 pm



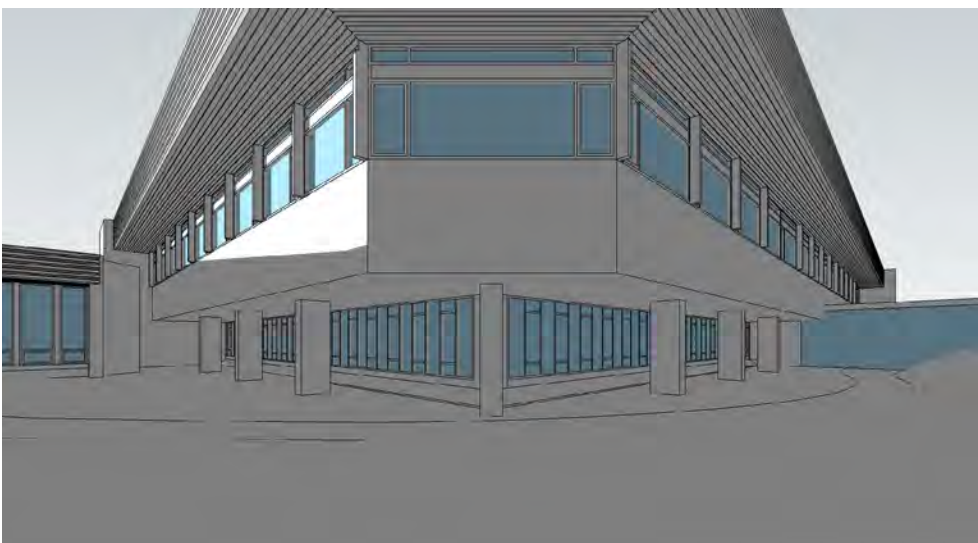
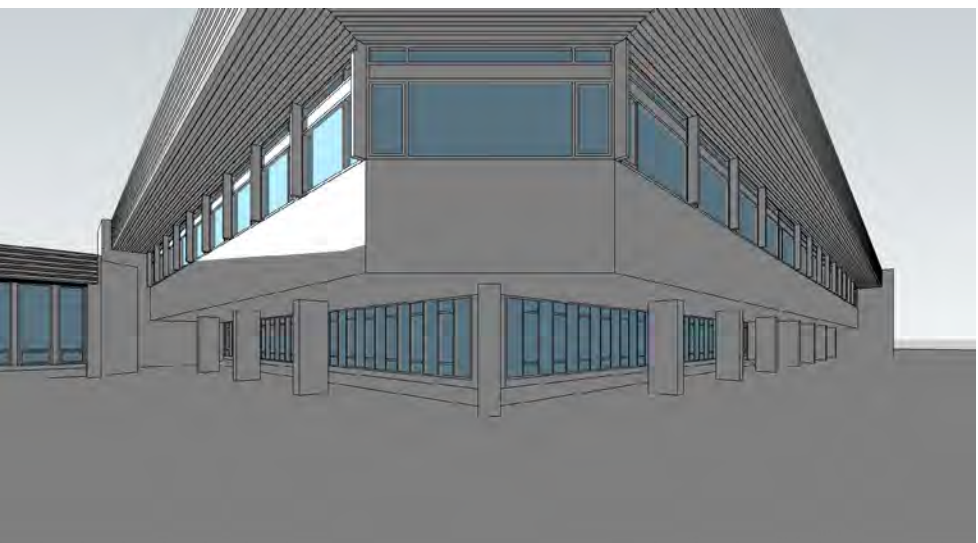
2 pm



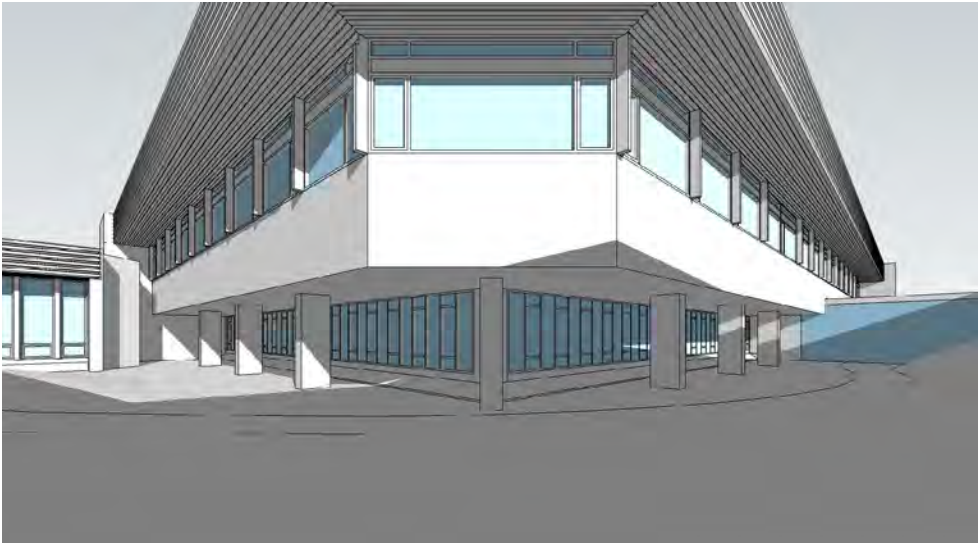
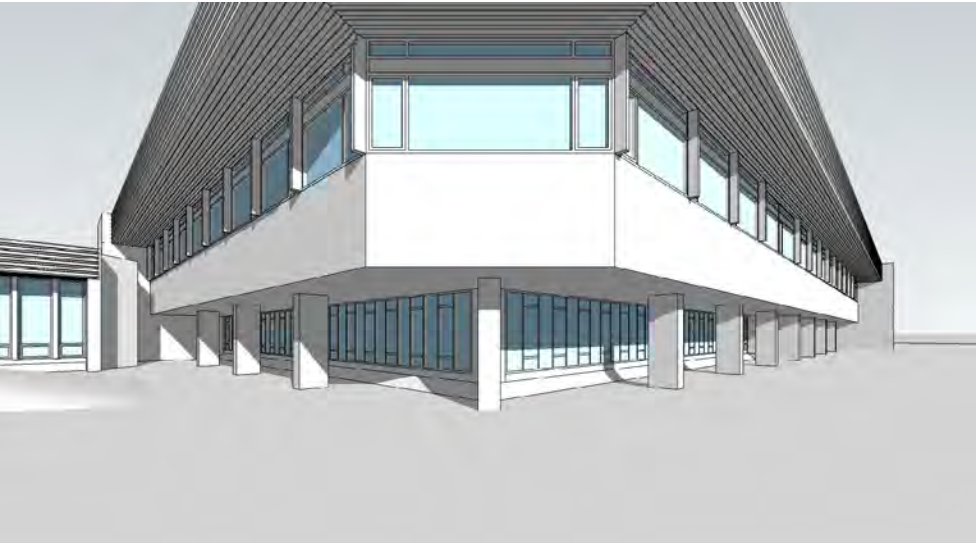
3 pm



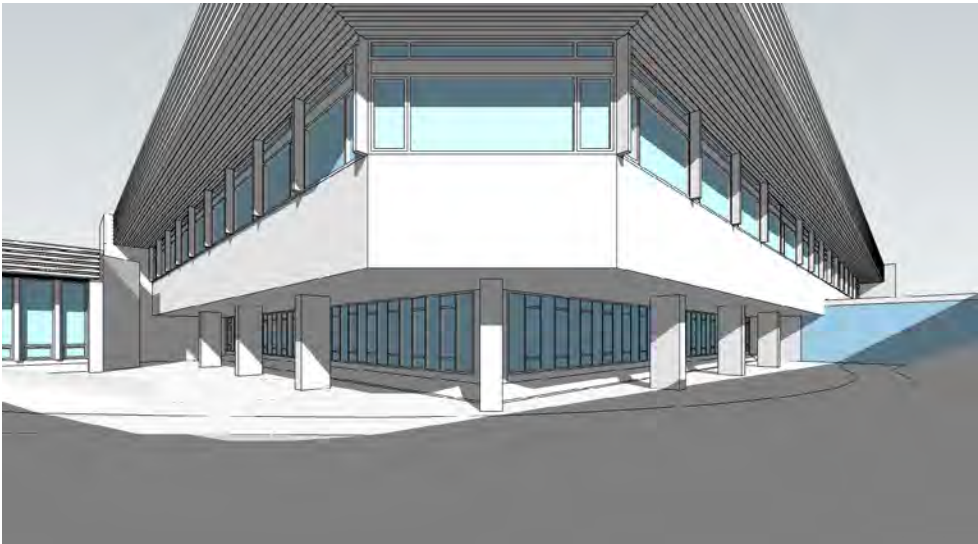
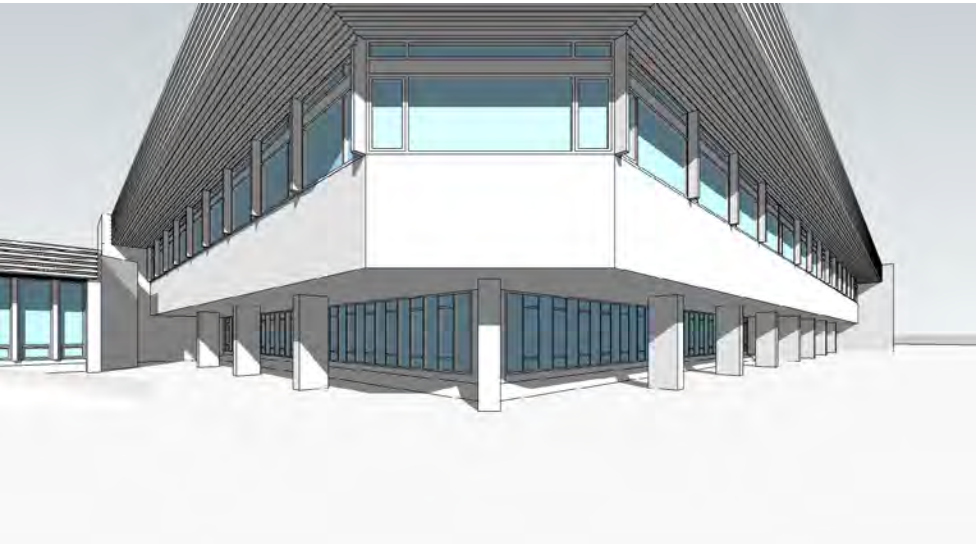
4 pm



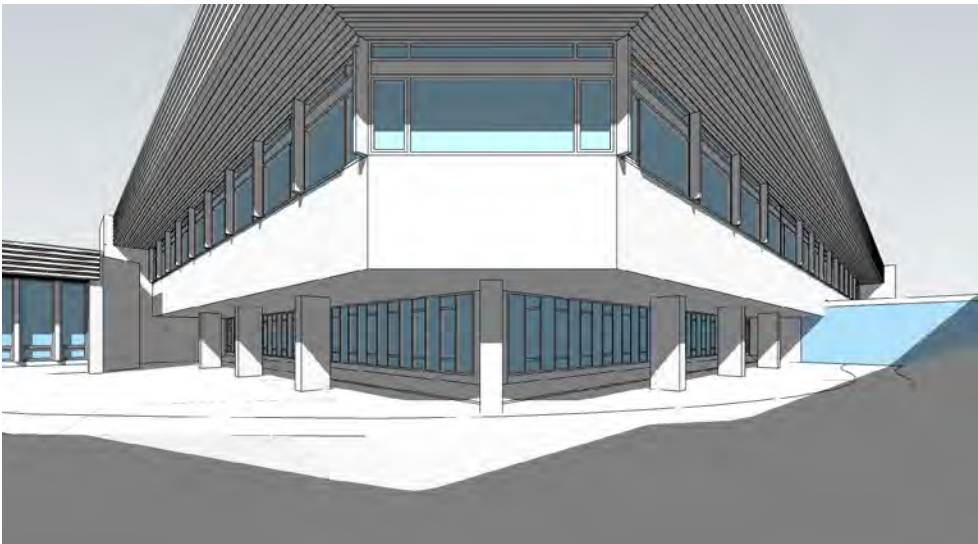
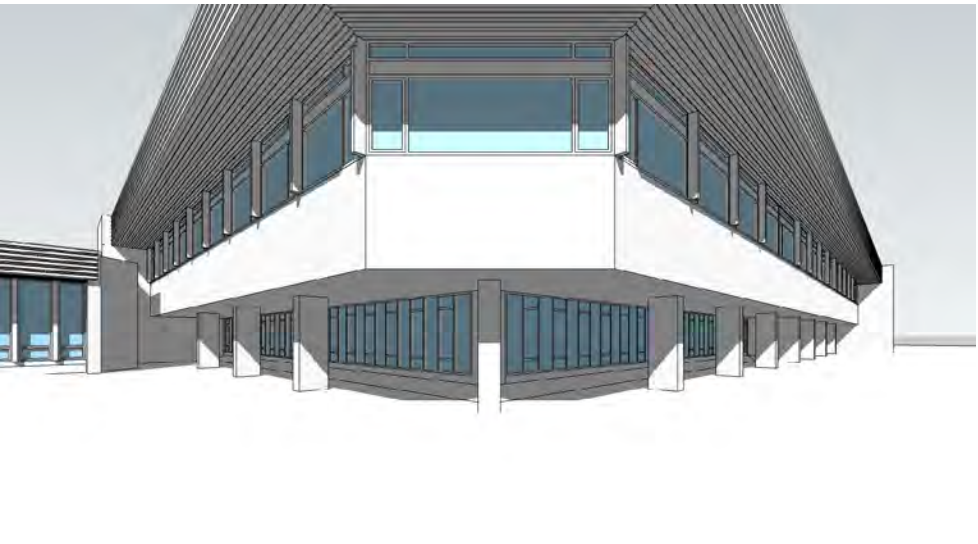
8 am



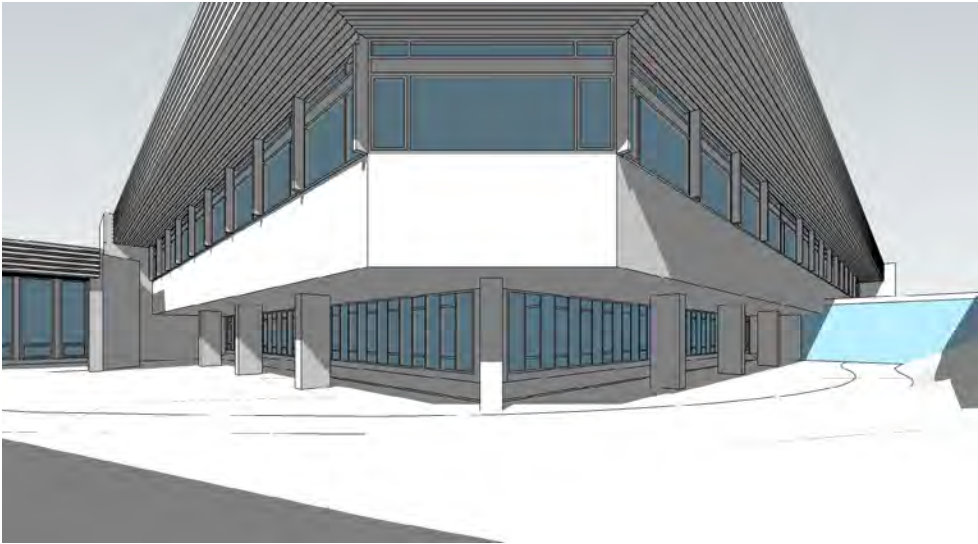
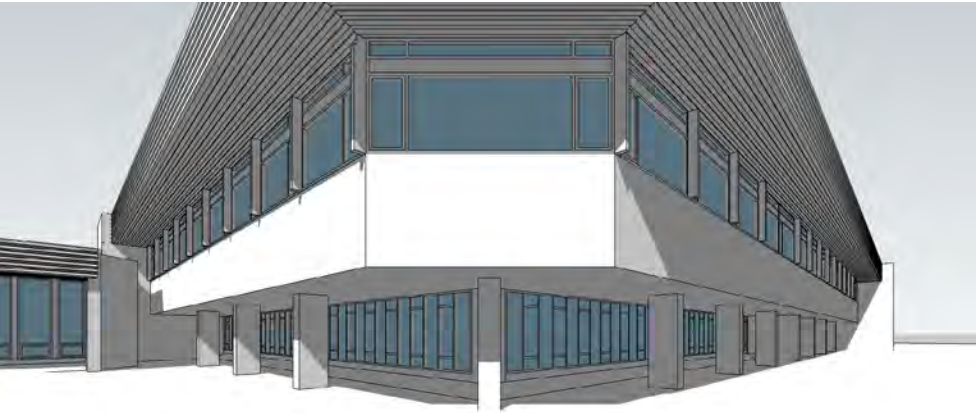
9 am



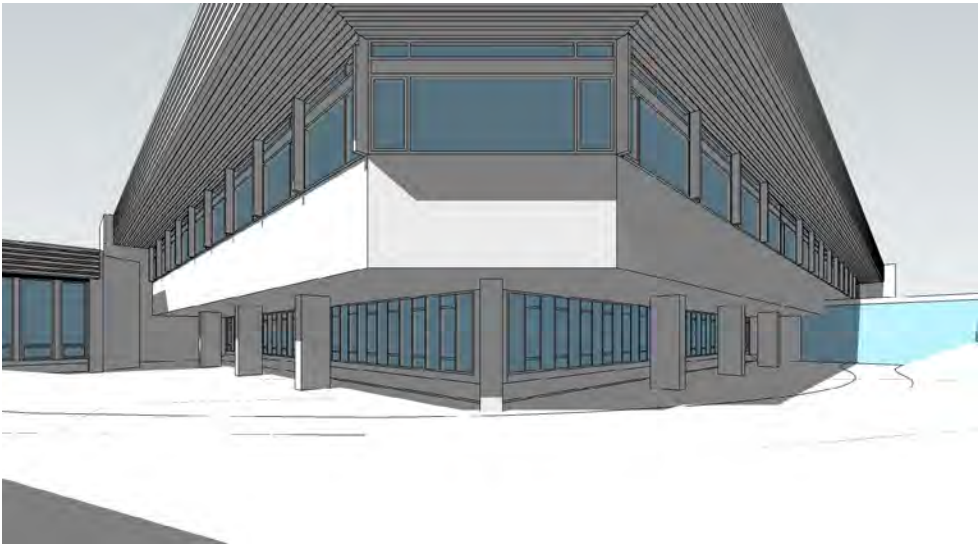
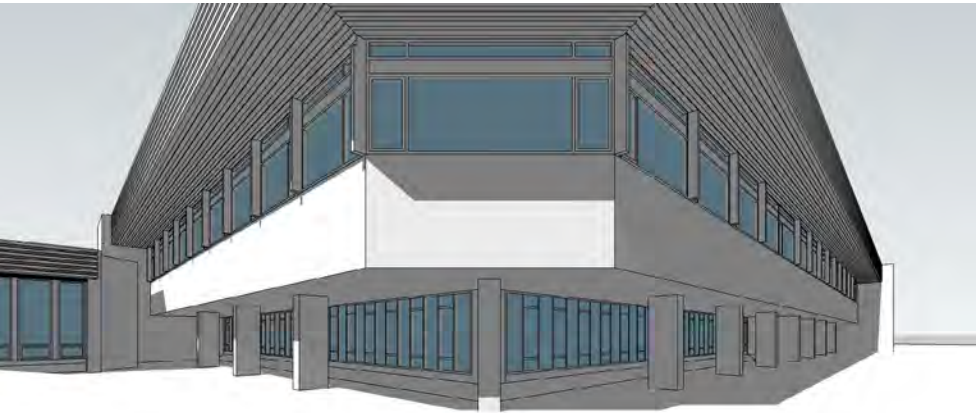
10 am



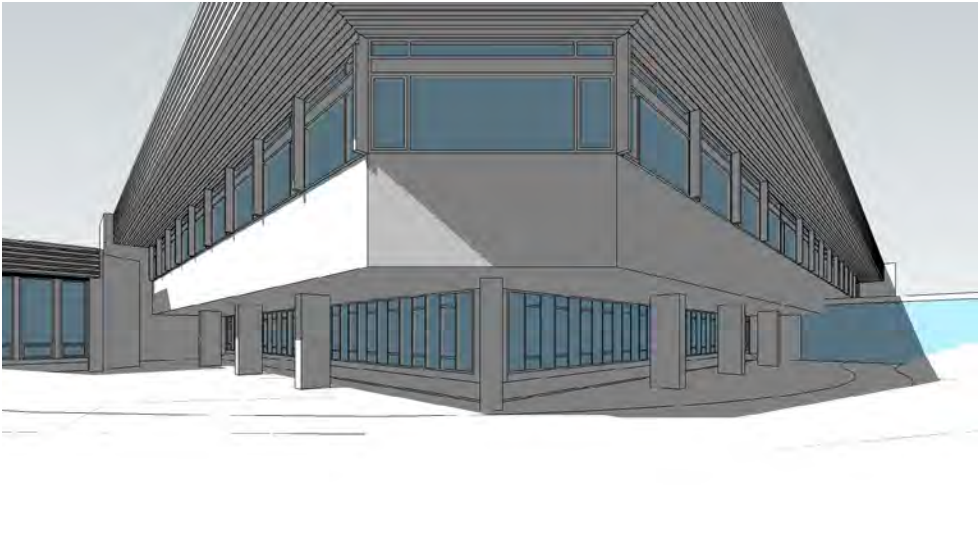
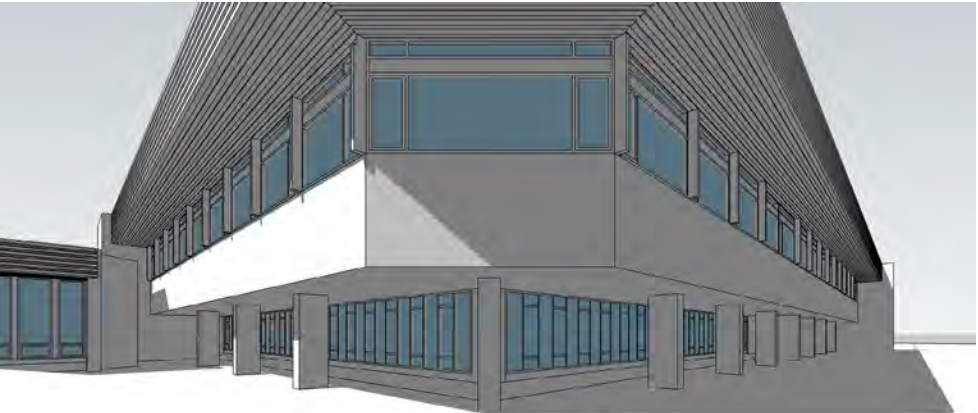
11 am



12 pm



1 pm

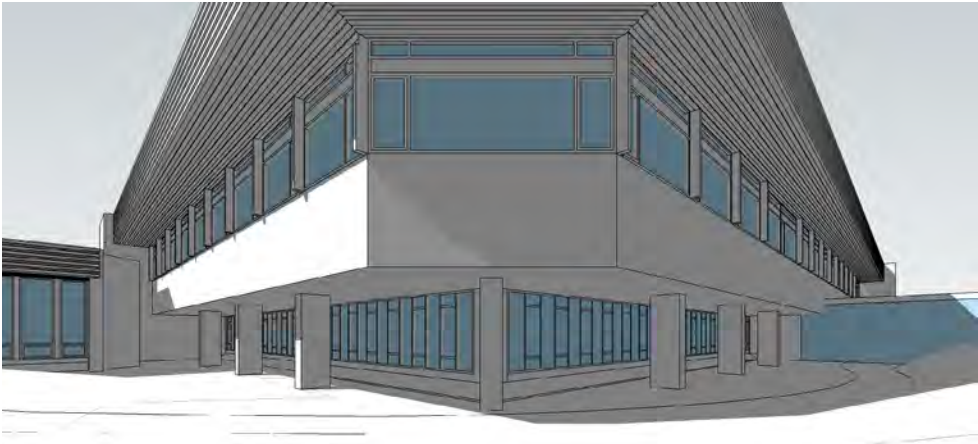
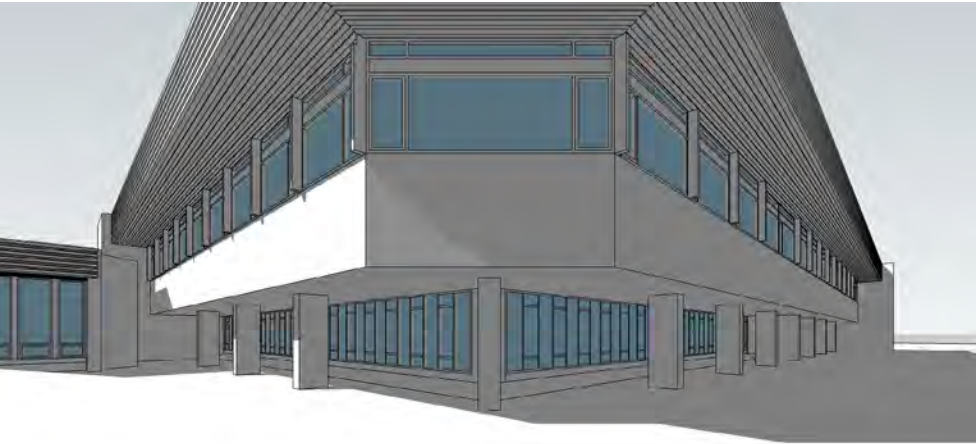


March 20 - Spring Equinox

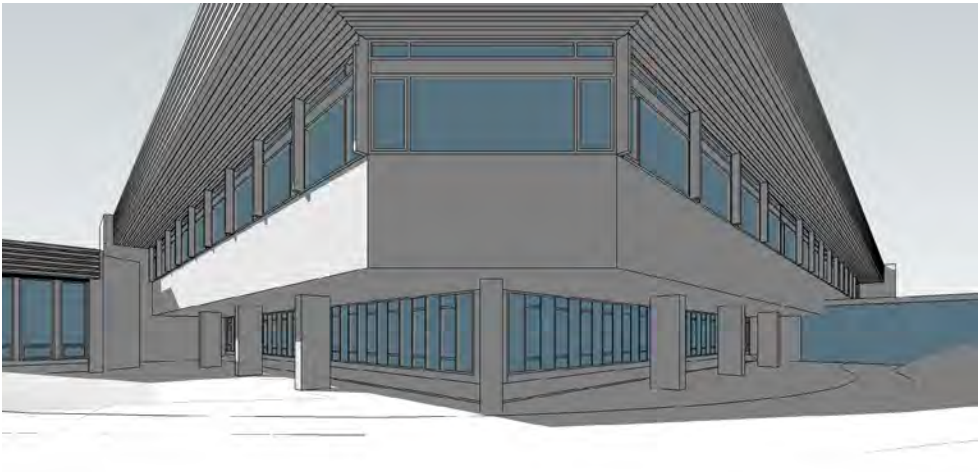
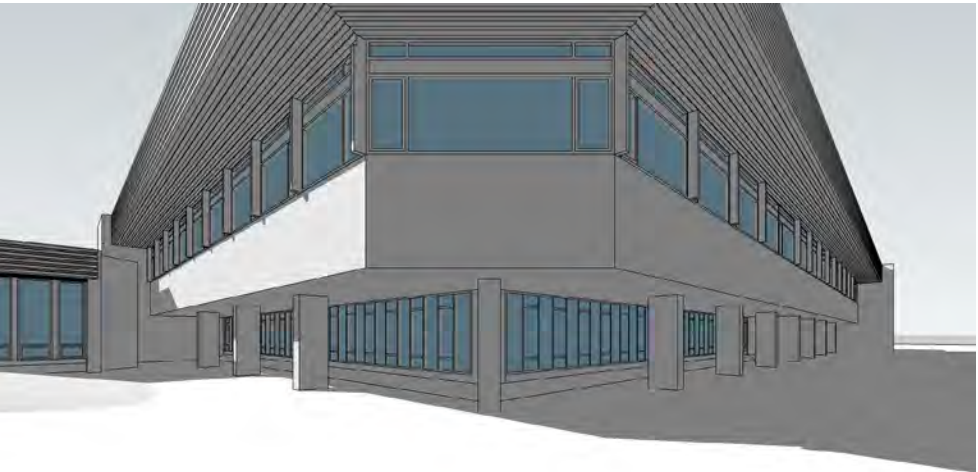
Existing Condition

With Proposed NCIL

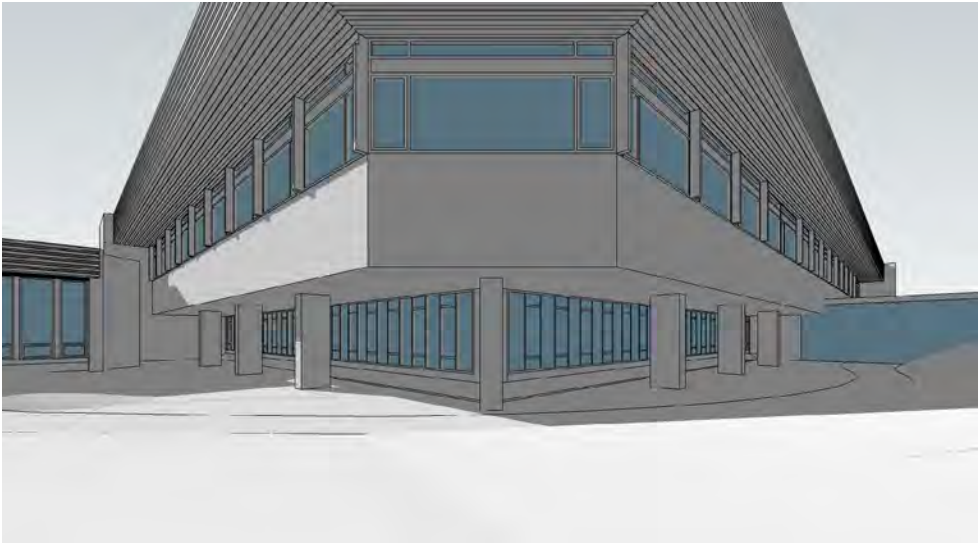
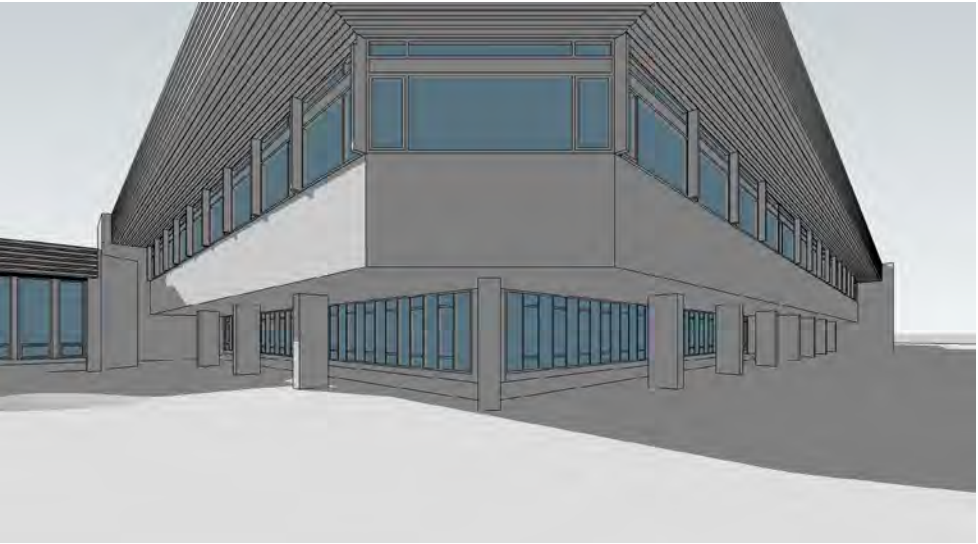
2 pm



3 pm



4 pm

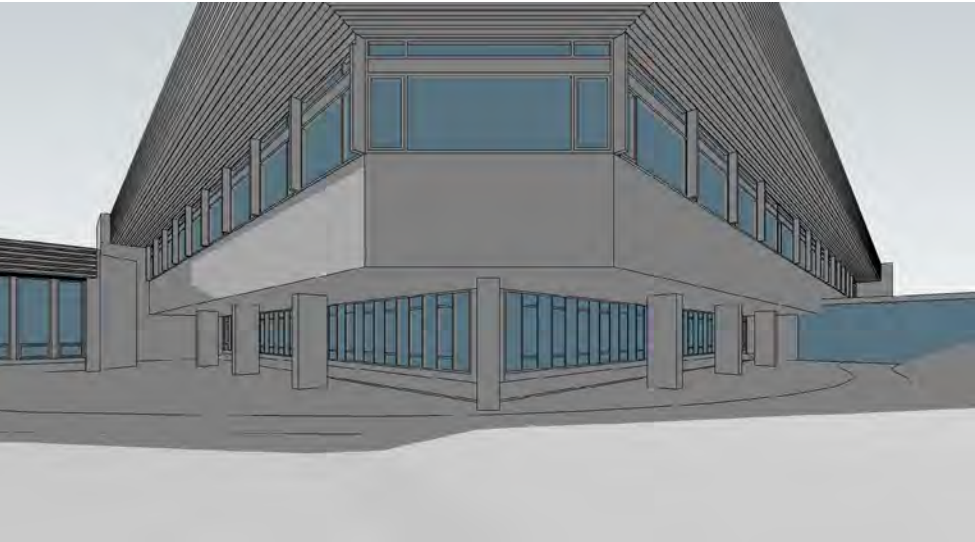
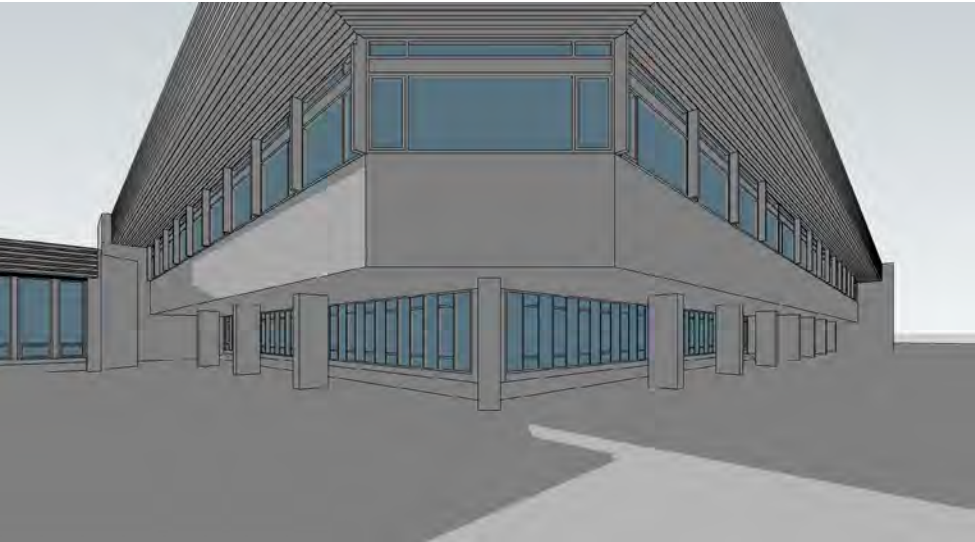


March 20 - Spring Equinox

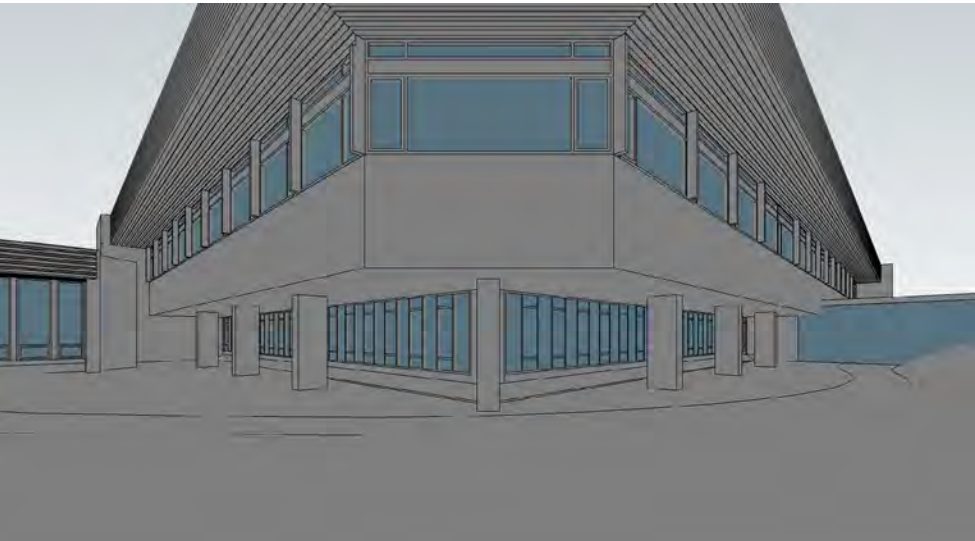
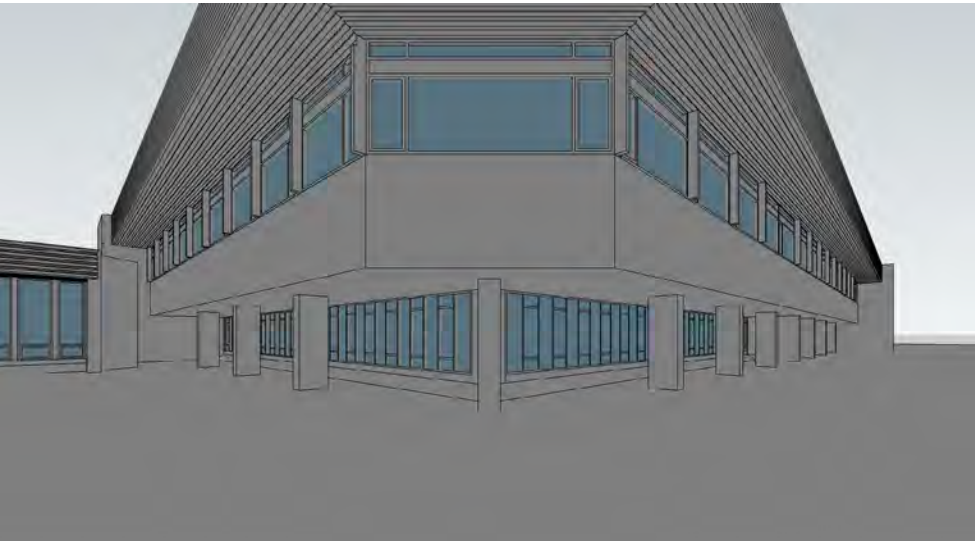
Existing Condition

With Proposed NCIL

5 pm



6 pm

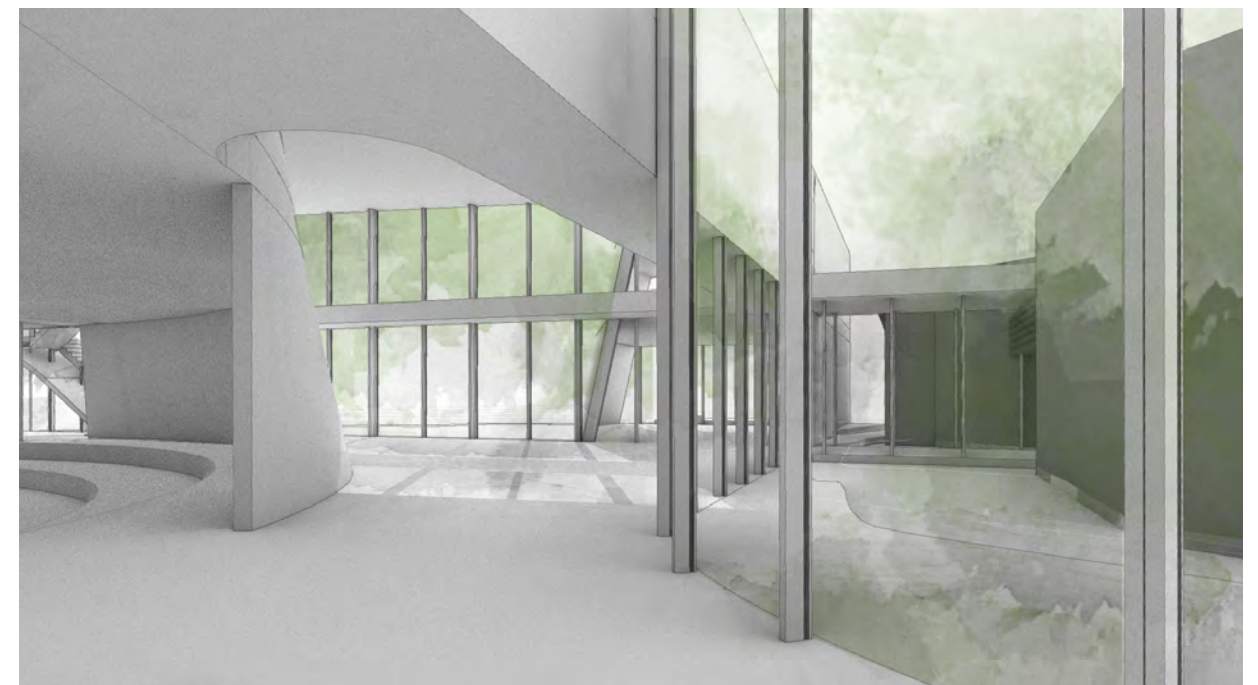
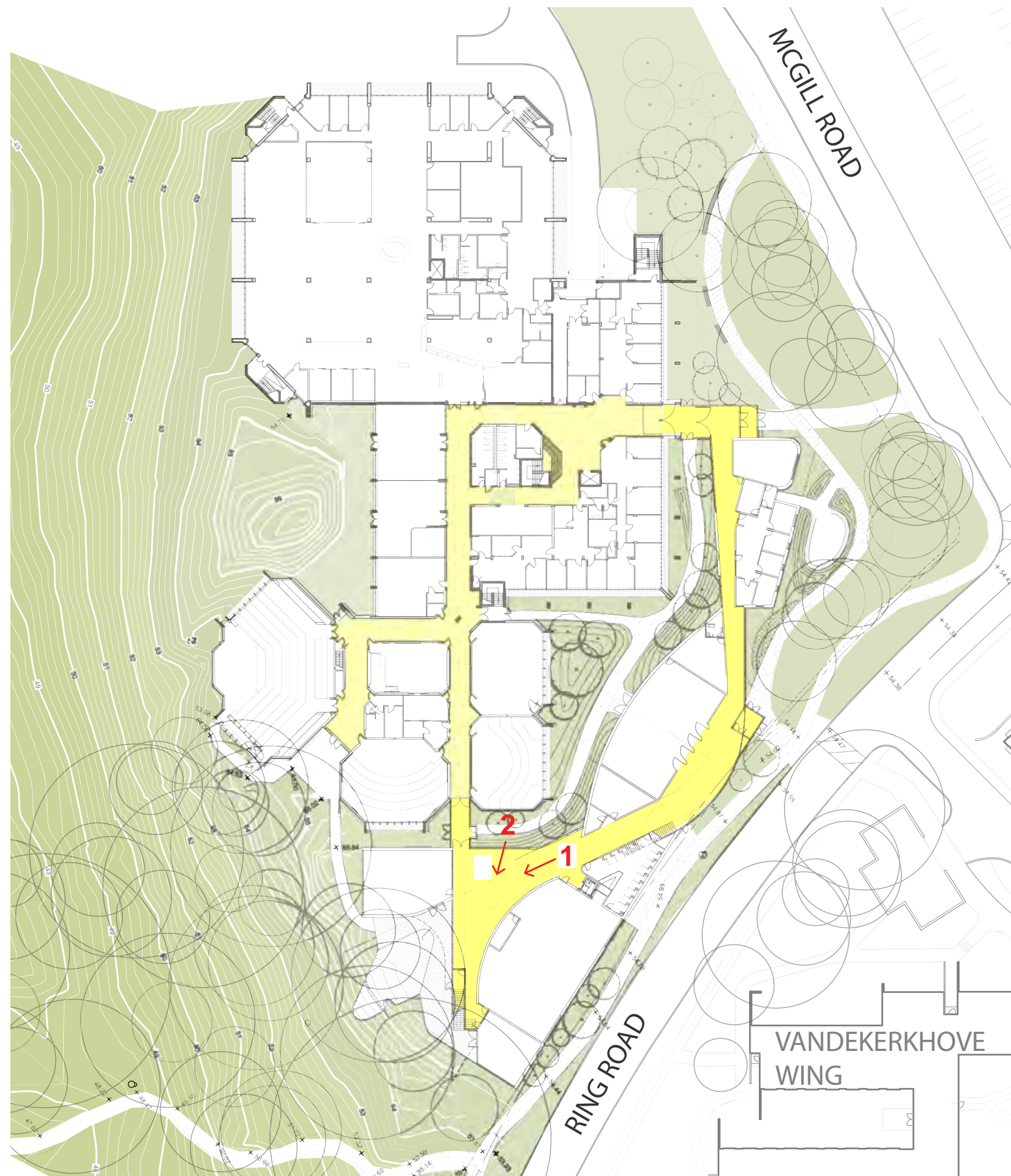


Does the proposed NCIL cast additional shadows on the Fraser Building Offices?

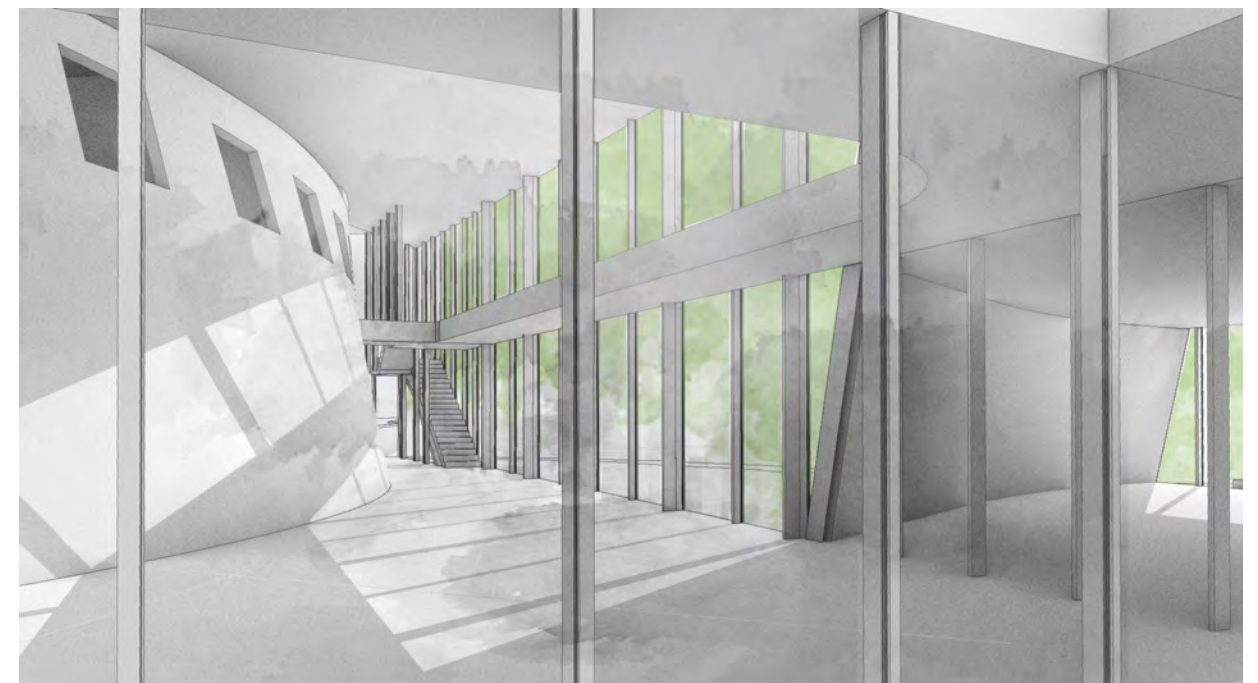
YES

NO

	June 20 Summer Solstice	December 21 Winter Solstice	March 20 Spring Equinox
8 am			
9 am			
10 am			
11 am			
12 pm			
1 pm			
2 pm			
3 pm			
4 pm			
5 pm			
6 pm			



1 View of the path leading towards the atrium



2 View of the learning deck beyond the atrium

Discussion

- Do you have any questions that have not yet been answered?
- What would you like us to consider as we refine the design?



University
of Victoria



Next Steps

- Thank you for your feedback
- Future focus groups
- Engagement on detailed design Spring 2021



University
of Victoria



THANK YOU!

To provide feedback
anytime:
planning@uvic.ca

Uvic.ca/fraserexpansion



University
of Victoria

