An aerial photograph of a university campus. In the foreground, there is a large green field, possibly a sports field, with a tennis court and a baseball field nearby. Several university buildings are scattered across the campus, surrounded by trees. In the background, a body of water is visible, with a forested hillside rising from the water's edge. The sky is overcast.

We acknowledge with respect the Lekwungen peoples on whose traditional territory the university stands and the Songhees, Esquimalt and WSÁNEĆ Peoples whose historical relationships with the land continue to this day.





# National Centre for Indigenous Laws Fraser Building Expansion and Renovation



University  
of Victoria

Engagement Follow Up  
December 16, 2020

# Agenda

- Land Acknowledgement
- Review Meeting Goals and Agenda
- Project Process
- Survey Results
- More Information on the proposed design
- Break
- Staff and Faculty feedback
- Summary of each breakout session
- Next steps

links to key documents found at:  
[uvic.ca/fraserexpansion](https://uvic.ca/fraserexpansion)



University  
of Victoria

# Today's goals

- To review project process
- To present survey feedback
- To present more information on the schematic design
- To hear responses from the users of the building on early design concepts



University  
of Victoria



# Expansion and Renovation



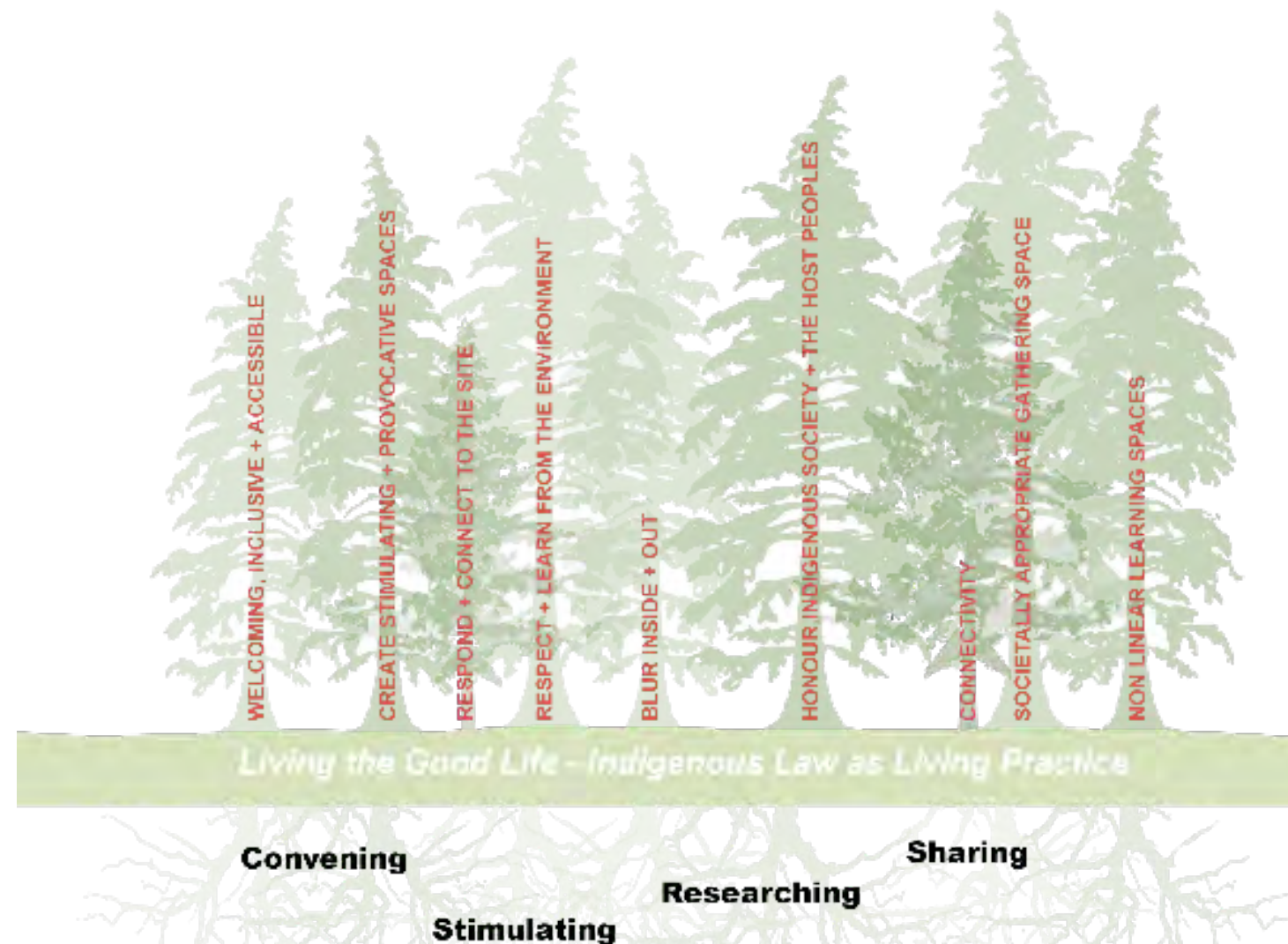
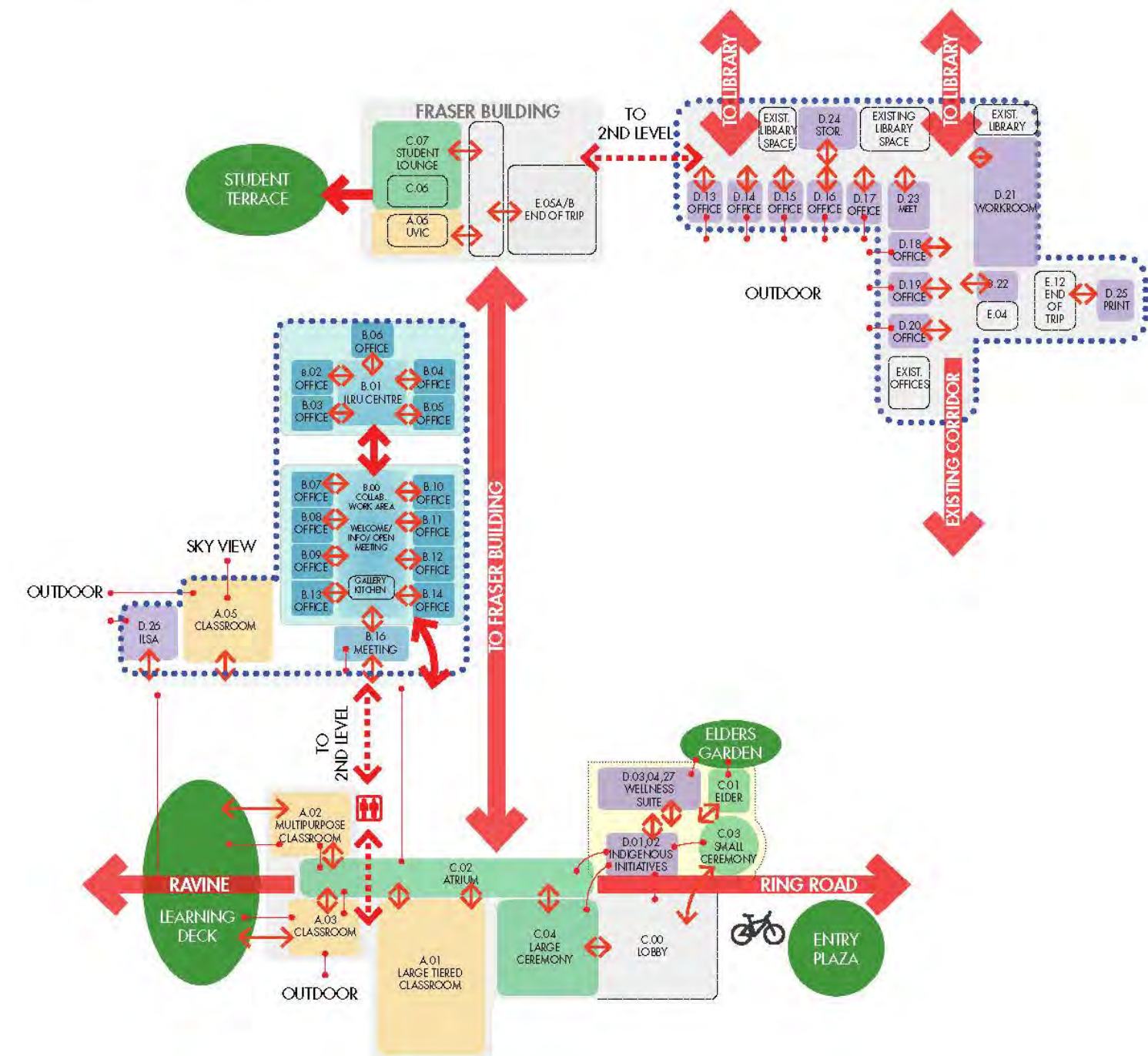
University  
of Victoria



# 2019 Feasibility Study

- Guiding Principles
- Functional Program
- Investigate Adjacencies
- Develop a Budget

PROGRAM	NET AREA (m <sup>2</sup> )	USE
A: SHARING	683	Learning spaces
B: RESEARCHING	346	ILRU (Indigenous Law Research Unit) + Environmental Law Spaces and Offices
C: CONVENING	1022	Ceremonial learning environments and affiliated support spaces
D: OFFICE SPACE	290	Faculty and Staff Offices, Meeting Rooms
E: SUPPORT	290	Washrooms and Service Spaces
TOTAL NET AREA:	2630	





# Schematic Design

- Site Analysis
- Engagement
- Respond through design
- Cost estimating

## INTEGRATION THROUGH CIRCULATION

- New entry and circulation loop unifies the entrances and integrates the existing with the new.



## TREES ARE IMPORTANT

- Preserve as many trees as possible
- Visual connection with trees



## LOCATION

- Create a visual presence from ring road that unifies the existing with new



# Steering Committee

- Kristi Simpson
- Ron Proulx
- Susan Breau
- Val Napoleon
- John Burrows
- Robina Thomas

## **Representatives from:**

- Campus Planning
- Facilities management
- IACE
- Finance and Operations
- Faculty of Law

# Building Committee

- Lorne Mack
- Ruth Young
- Rosemary McCutcheon
- Freya Kodar
- Sarah Morales
- Mike Wilson
- Gary Bridgens
- Amelia Hollingshurst

## **Guests**

- Darryl Johnson
- David Adams
- Juliet Van Vliet
- Catherine Schafers

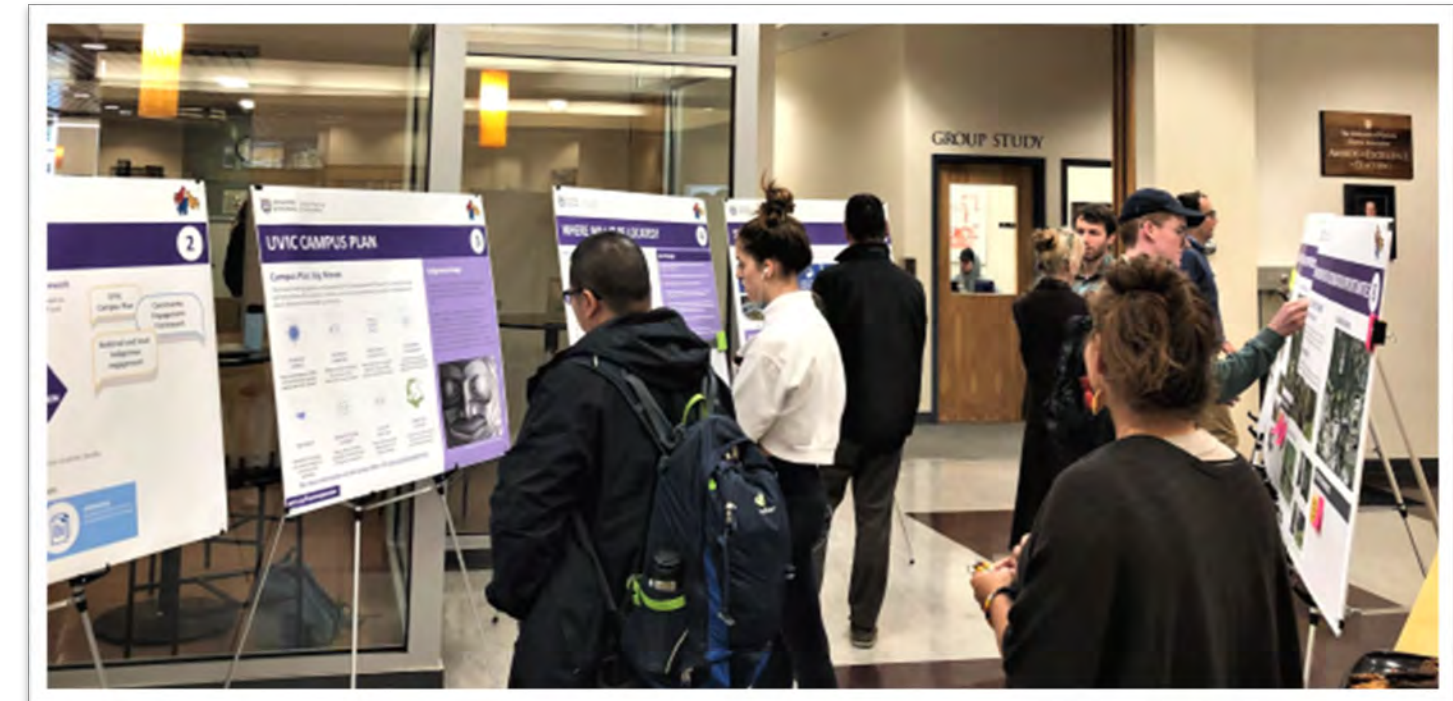


University  
of Victoria

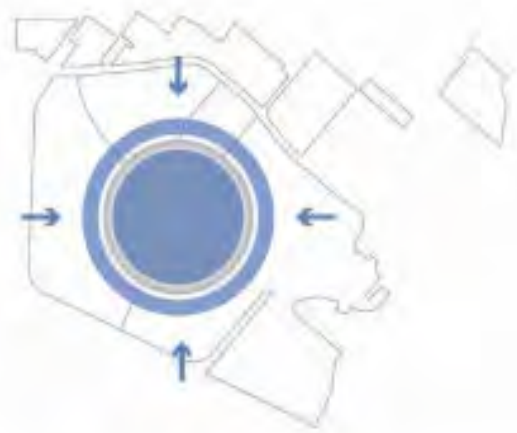


# Engagement

- Visioning Session
- Coast Salish Community
- Schematic Design
- Follow up
- Design Development







### A COMPACT CAMPUS

Focus new development within and near Ring Road, growing upward rather than outward.



### CENTRES OF ANIMATION

Reinforce existing activity hubs and create new ones in under-utilized areas of campus.



### RING ROAD AS A PEOPLE PLACE

Make Ring Road an animated place for walking, cycling, lingering, socializing and more.



### COMMITMENT TO WALKABILITY

Make UVic an even better campus for walking with better connections to link key places.



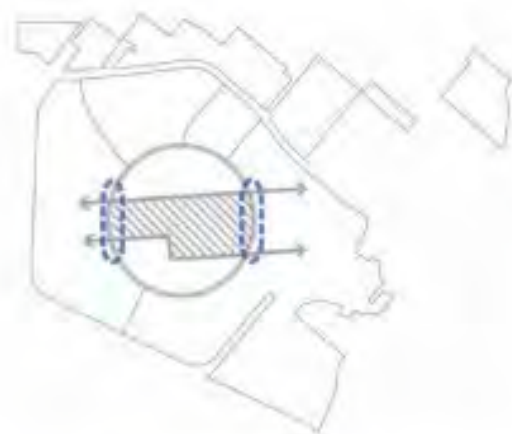
### GREENWAYS

Strengthen the primary east-west greenway as a connection and a destination.



### ENHANCE CYCLING & TRANSIT

Make cycling and transit enjoyable by enhancing sense of safety and convenience.



### A FOCUSED FIRST PHASE

Focus initial public realm improvements in the centre of campus.



### CONNECTING TO NATURE

Conserve and enhance natural areas to minimize impacts from building development.

For more information on the Campus Plan, visit [uvic.ca/campusplanning](http://uvic.ca/campusplanning)



University  
of Victoria

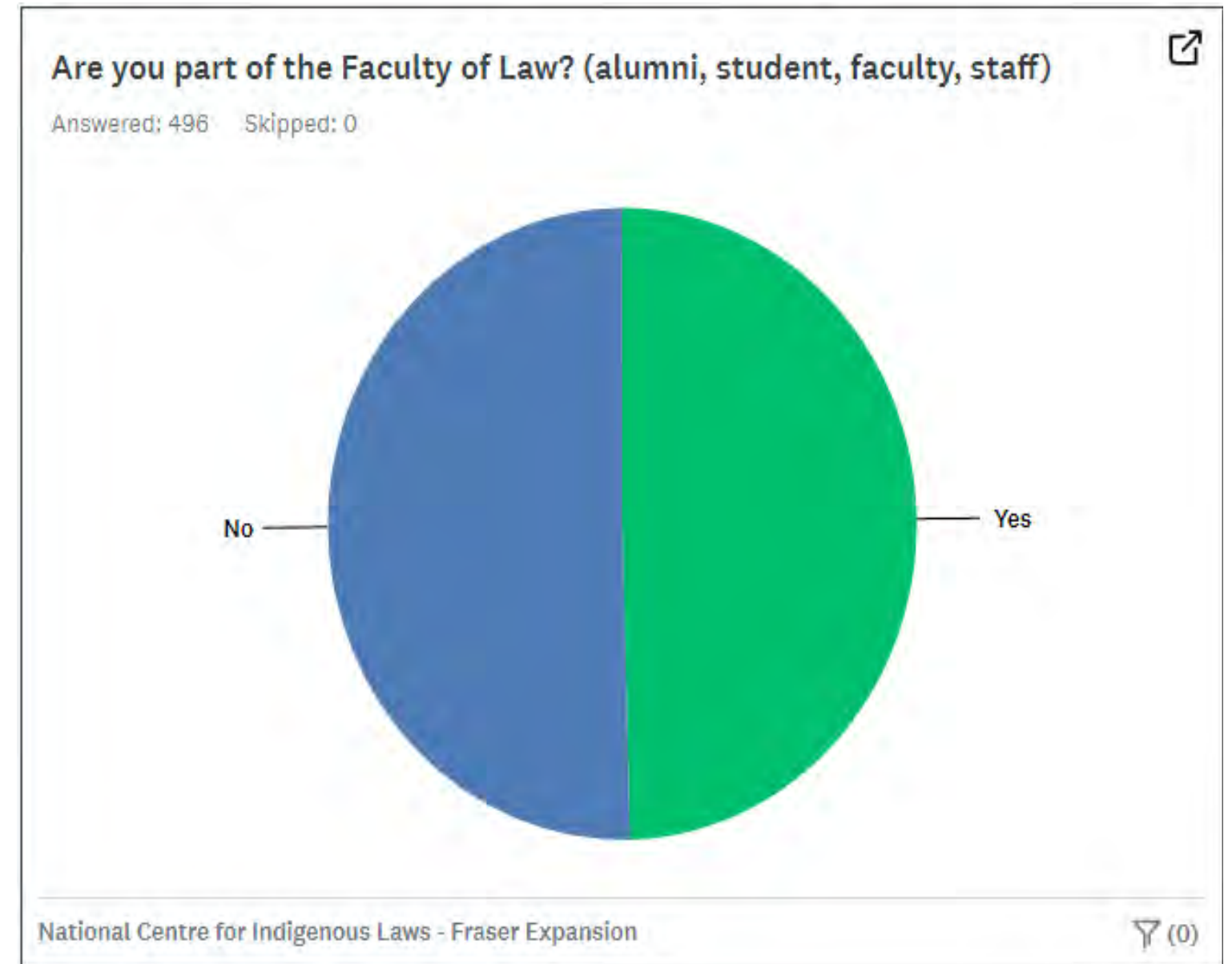
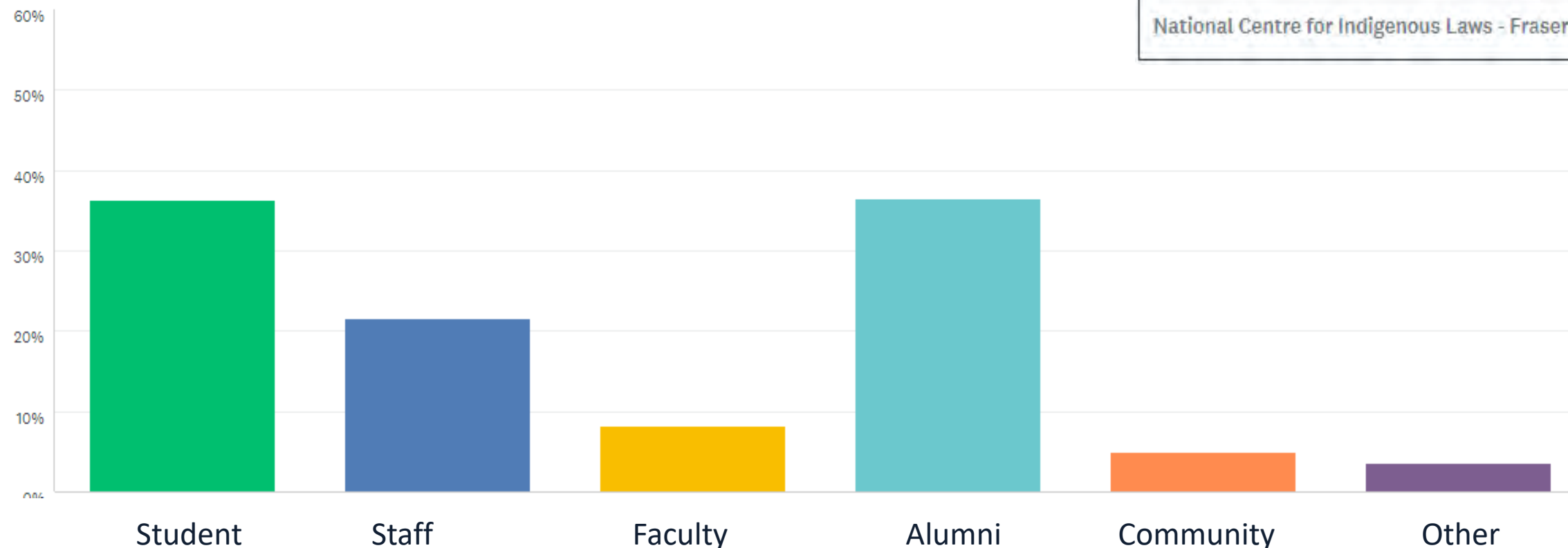


# Survey Results - Summary

- 496 participants
- 50% were students, faculty, staff or alumni from the Faculty of Law
- 62 were Law faculty and staff

What's your relationship to UVic?

Answered: 496 Skipped: 0



University  
of Victoria



# Overall Survey Results - Summary





# Survey Results – Law Faculty and Staff

Click the siting principles that are most compelling for you?

Answered: 39 Skipped: 23

Preserves mature trees in the woods to the South of the Building

82.05%

Respects the Bowker Creek Watershed

74.36%

Connection and Circulation with the existing Fraser Building

64.10%

Creates and visible and accessible presence on Ring Road

15.38%

Improves wayfinding

7.69%

Increases area for an outdoor learning platform

41.03%

0% 10% 20% 30% 40% 50% 60% 70% 80%

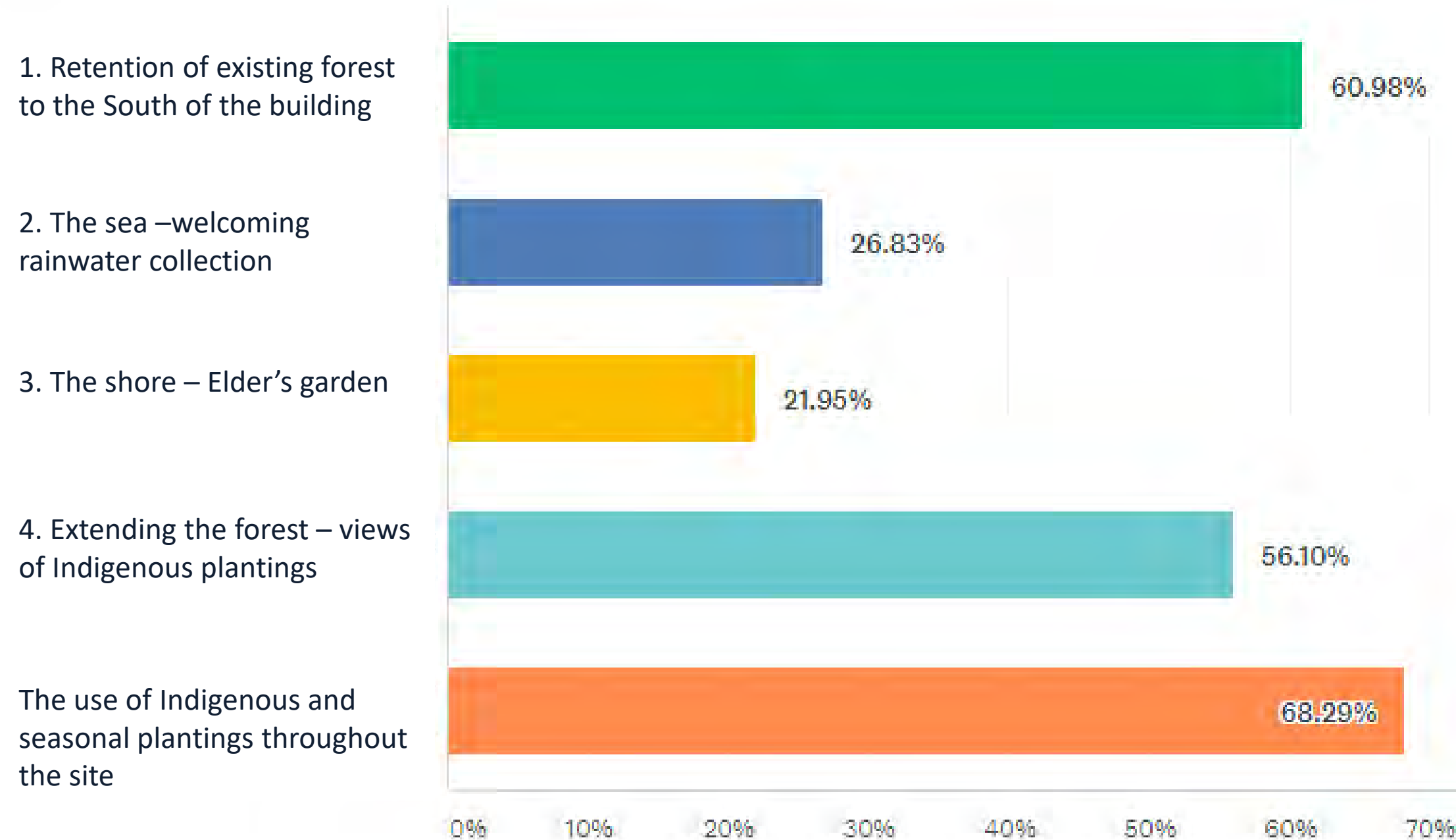


University  
of Victoria

# Survey Results – Law Faculty and Staff

Click the proposed landscape features that excite you most (numbers correspond to the Landscape concept plan):

Answered: 41 Skipped: 21



University  
of Victoria

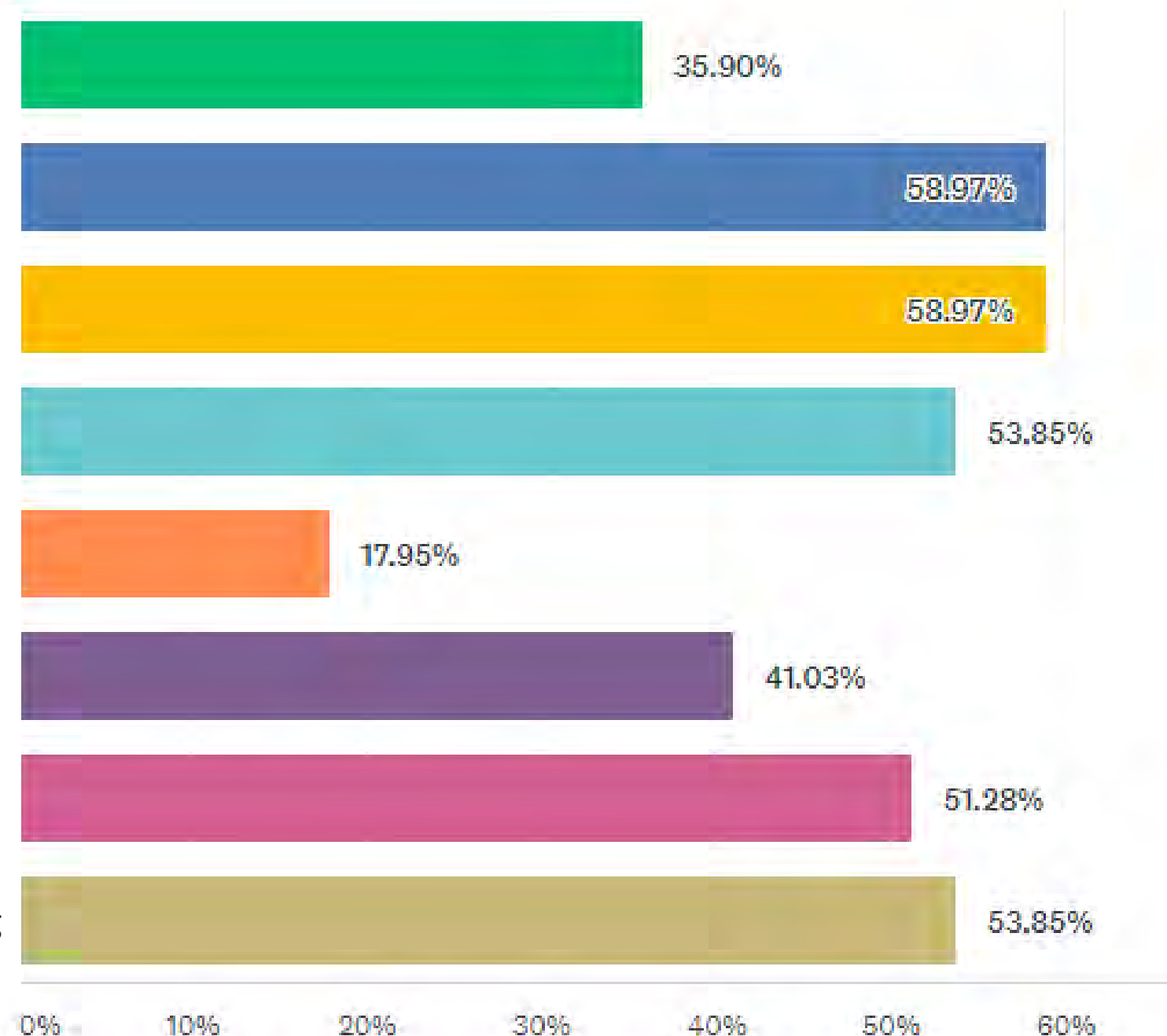


# Survey Results – Law Faculty and Staff

Click the design highlights you find most exciting (the numbers on the plans correspond to the numbers below):

Answered: 39   Skipped: 23

1. Renovation area with end of trip facilities, student lounge, classroom, meeting rooms, washrooms, offices and storage.
2. A refresh of the existing Fraser Building main entry, connecting the existing lobby to the new circulation of the expansion.
3. An extended forest area between the existing Fraser Building and the new expansion, providing views of indigenous plantings.
4. An outdoor learning deck connecting interior learning spaces with exterior learning opportunities.
5. Building Expansion has presence on Ring Road and a unified welcoming façade.
6. A large ceremony space visible from Ring Road, connected to the main lobby, and extended forest.
7. Second floor sky classroom with views to the sky.
8. A gathering atrium space with informal studying and socializing spaces, offering views to the forest and between floor levels.



# Survey Results – Law Faculty and Staff







# UNIVERSITY OF VICTORIA

## NATIONAL CENTRE FOR INDIGENOUS LAWS

### SCHEMATIC DESIGN PRESENTATION 2020.12.16

*Make sure there is a cross-flow of information between the JID and the JD. This is an integral part of a whole, we are a whole. This work is part of everything we do for all of us, not just for the Indigenous law students. - Susan Breau*

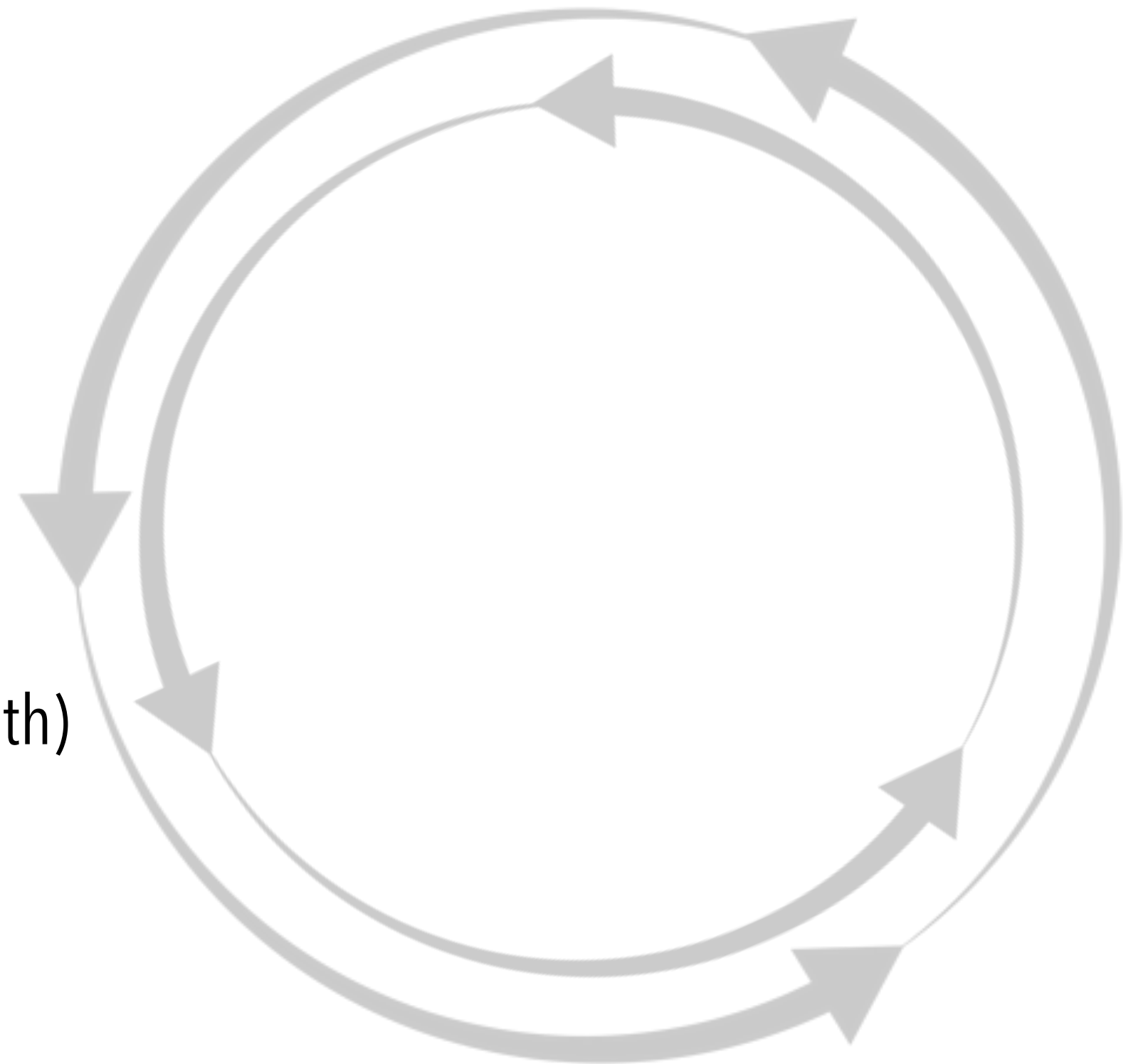
TWO ROW | TEEPLE | LOWE HAMMOND ROWE



# OVERVIEW OF CONVERSATIONS

## WHO WE HAVE LISTENED TO

- JOHN BORROWS (Anishnaawbe)
- VAL NAPOLEON (Saulteau)
- SAMANTHA AND JOHN ETZEL (Tsawout)
- HEREDITARY CHIEF EDWARD THOMAS (ESQUIMALT)
- RUTH YOUNG (Cree)
- SARAH MORALES (Cowichan)
- DOUG + KATHY LAFORTUNE (Tsawout + Nuuchahnulth)
- MENETIYE (W̱SÁNEĆ)
- CLINTON KUZIO (Cree - UVIC Grad)
- BUTCH DICK (Songhees)
- TOM CHILD (Kwakiutl)
- MARYANN THOMAS (ESQUILMALT)





# CONVERSATIONS

## WHAT WE HEARD

- The importance of Trees
- Integration (non-silo'd)
- Walking the Path (learning and good-life)
- Facing East
- The importance of Water
- Unifying Facade/Programme
- Transformation how the Wolf Turned to Orca
- Traditional Plantings



*PEXSISEN, The Moon of Opening Hands, or the "blossoming out" moon, holds the time from mid-March to mid-April in the W̱SÁNEĆ 13 Moon calendar: SKÁU ŁTE.*



**LOCATION - FLORA - FAUNA**

**FOOD + MEDICINES**

**LANGUAGES**

**BOWKER CREEK**

**RED CEDAR TREES**

**THE CANOE**

**THE GREAT FLOOD**

**13 MOONS**

**LIVING THE GOOD LIFE**

**WATER WOMAN - LADY BUG**

**TRANSFORMATION**

**DANCES**

**WITNESSING**

**FACE TO FACE WITH THE FOREST**

**HARVEST IN CURRICULUM**

**PLACES FOR STORY TELLING**

**RESPECT OF WATERSHED**

**MATERIALITY + SPIRITUALITY**

**FORM AND AESTHETIC**

**WATER STORY**

**SEASONALITY**

**PATH THROUGH BUILDING**

**FEMINIST LENS**

**PHYSICAL ABILITY TO OPEN**

**PLACE FOR CEREMONY**

**PAY ATTENTION TO YOUR WORLD**



# CONNECTIVITY

## COHESIVE CIRCULATION

- Continuous loop connects the existing circulation with the new build to create one complete building
- Full integration of space to not read as addition and existing - but as a continuous building





# RING ROAD INTERFACE

## VISUAL PRESENCE

- Building addition has a strong visual presence from the ring road providing a visual presence for the entire building.
- Addition combines with existing paths to help occupants find their way into and through the building.





# PATH

## TEACHING, LEARNING, HEALING

- This conceptual idea is about treating the addition, renovation, and landscape as a continuous path through the forest.
- This path can be used for teaching, learning, healing.





# PATH THROUGH THE FOREST





# PATH BY THE FOREST





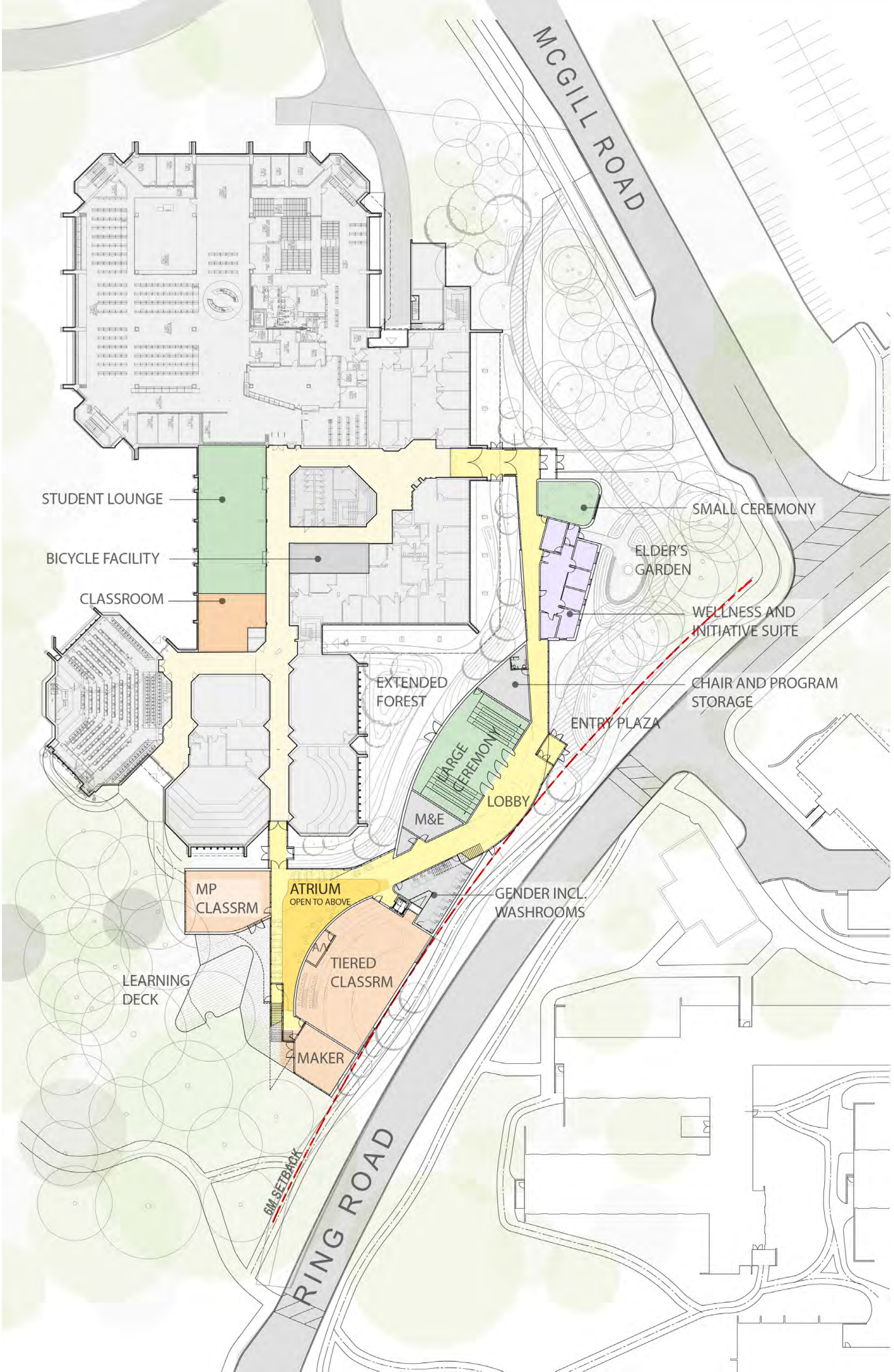
# PATH TOWARDS THE FOREST





# FLOOR PLAN

## GROUND FLOOR





# FLOOR PLAN

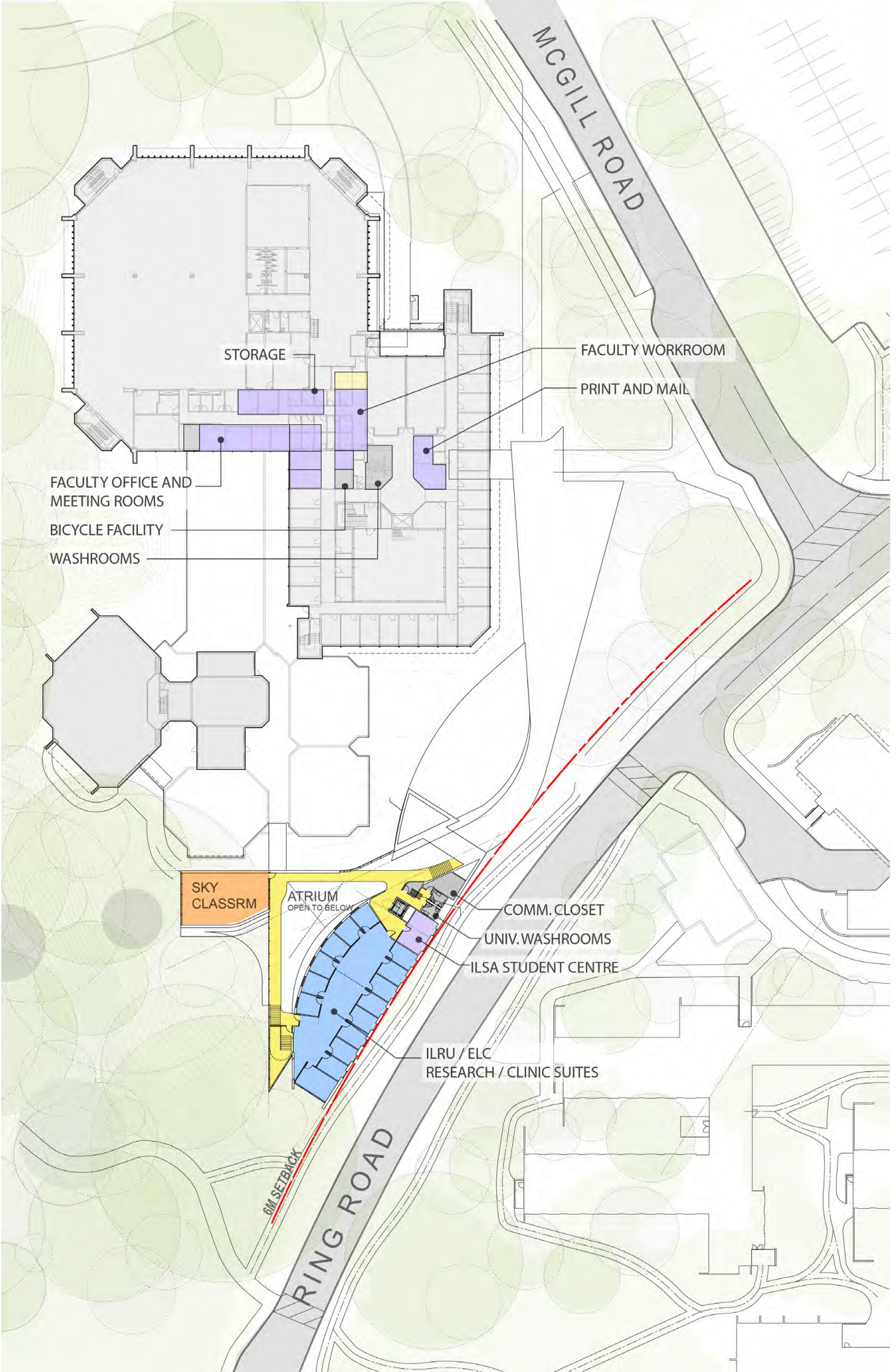
## GROUND FLOOR





# FLOOR PLAN

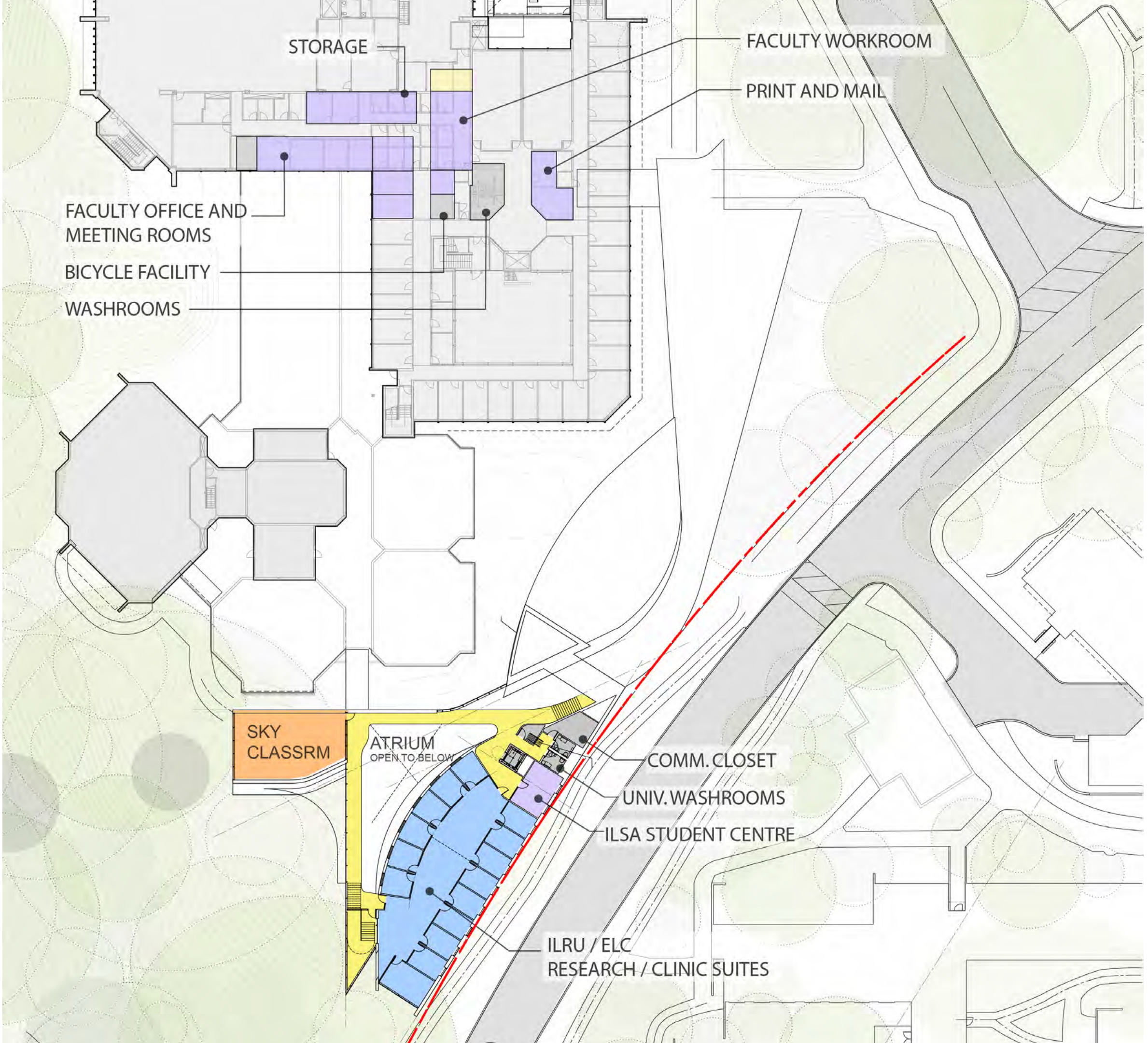
## SECOND FLOOR



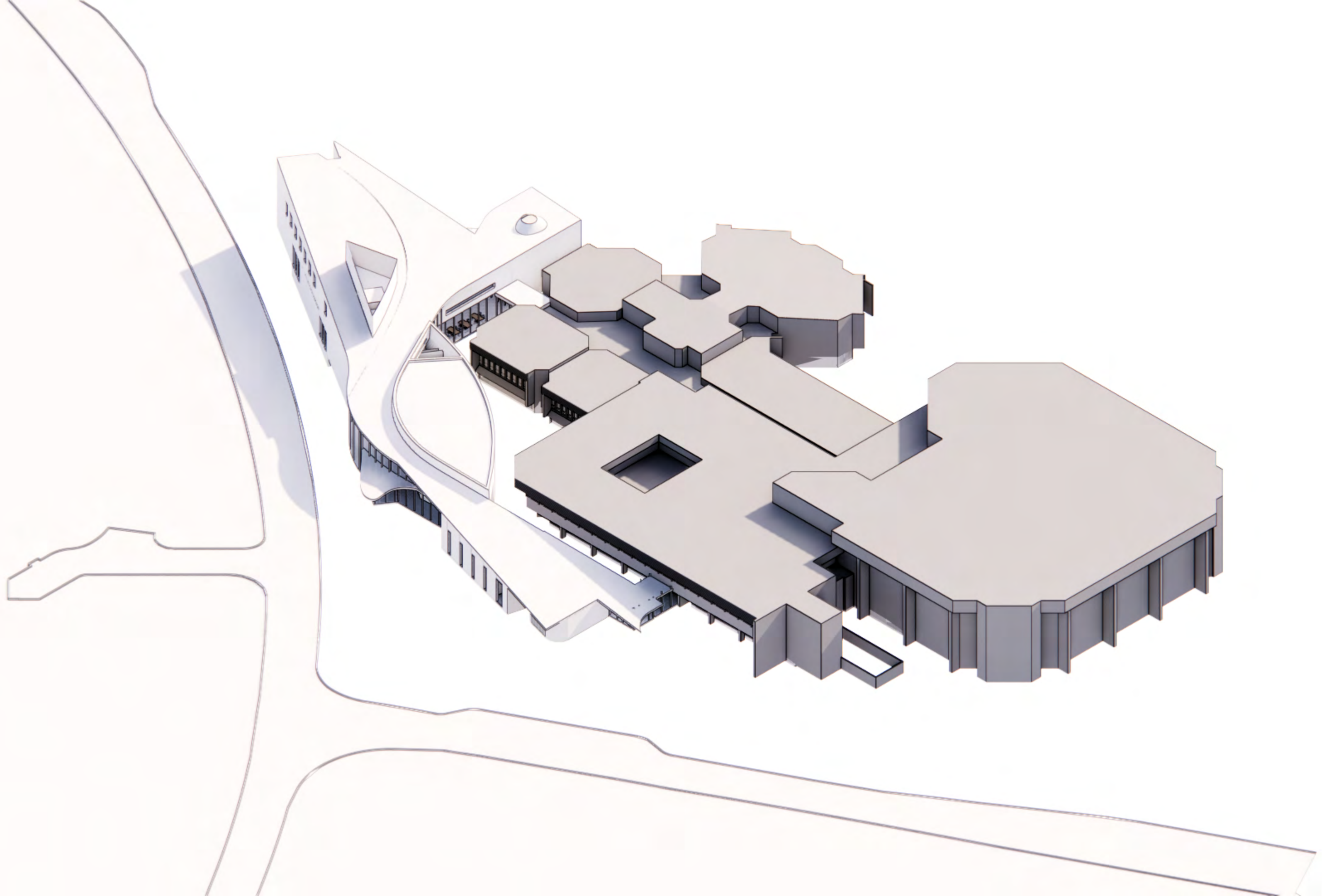


# FLOOR PLAN

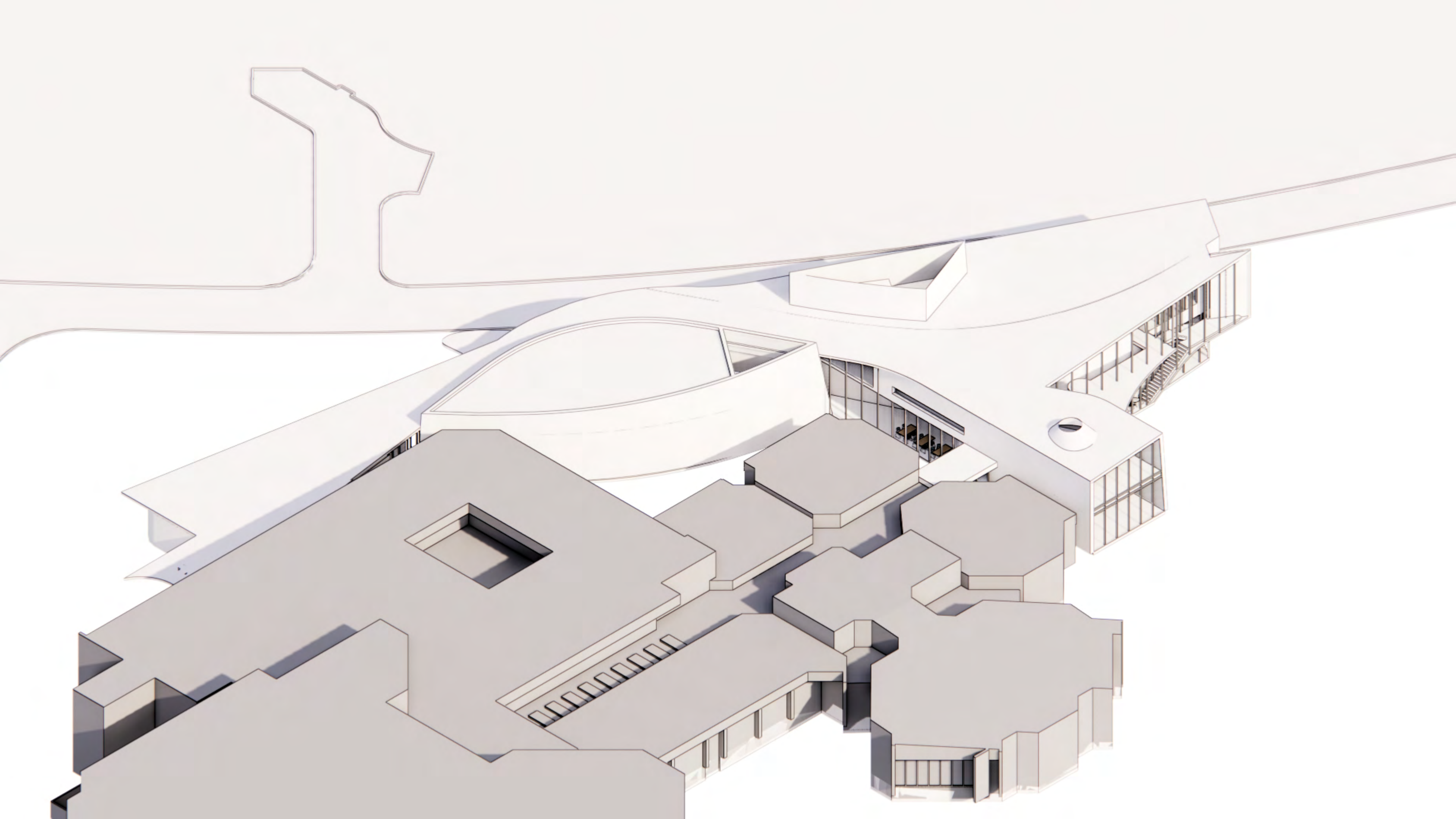
## SECOND FLOOR



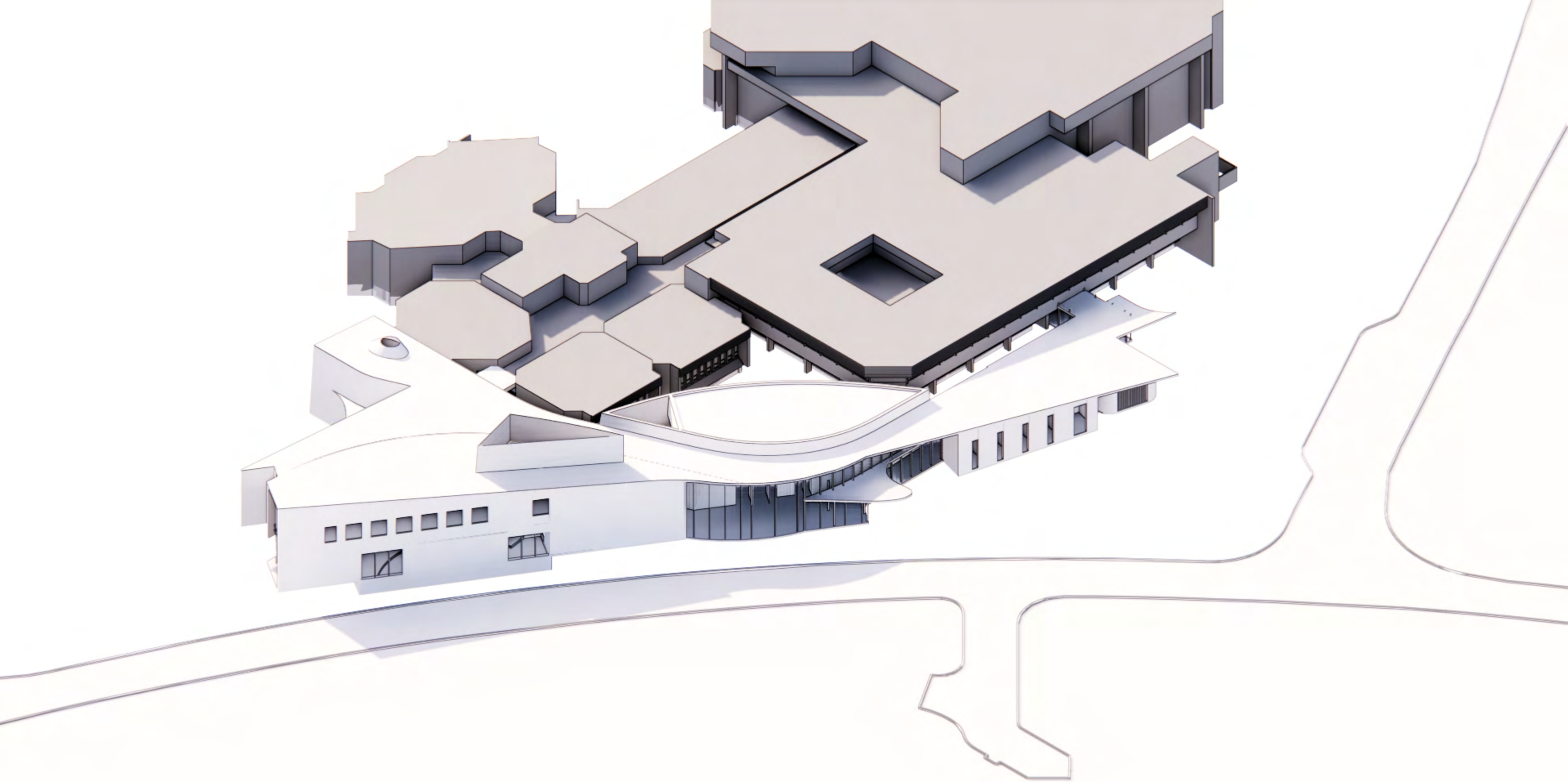




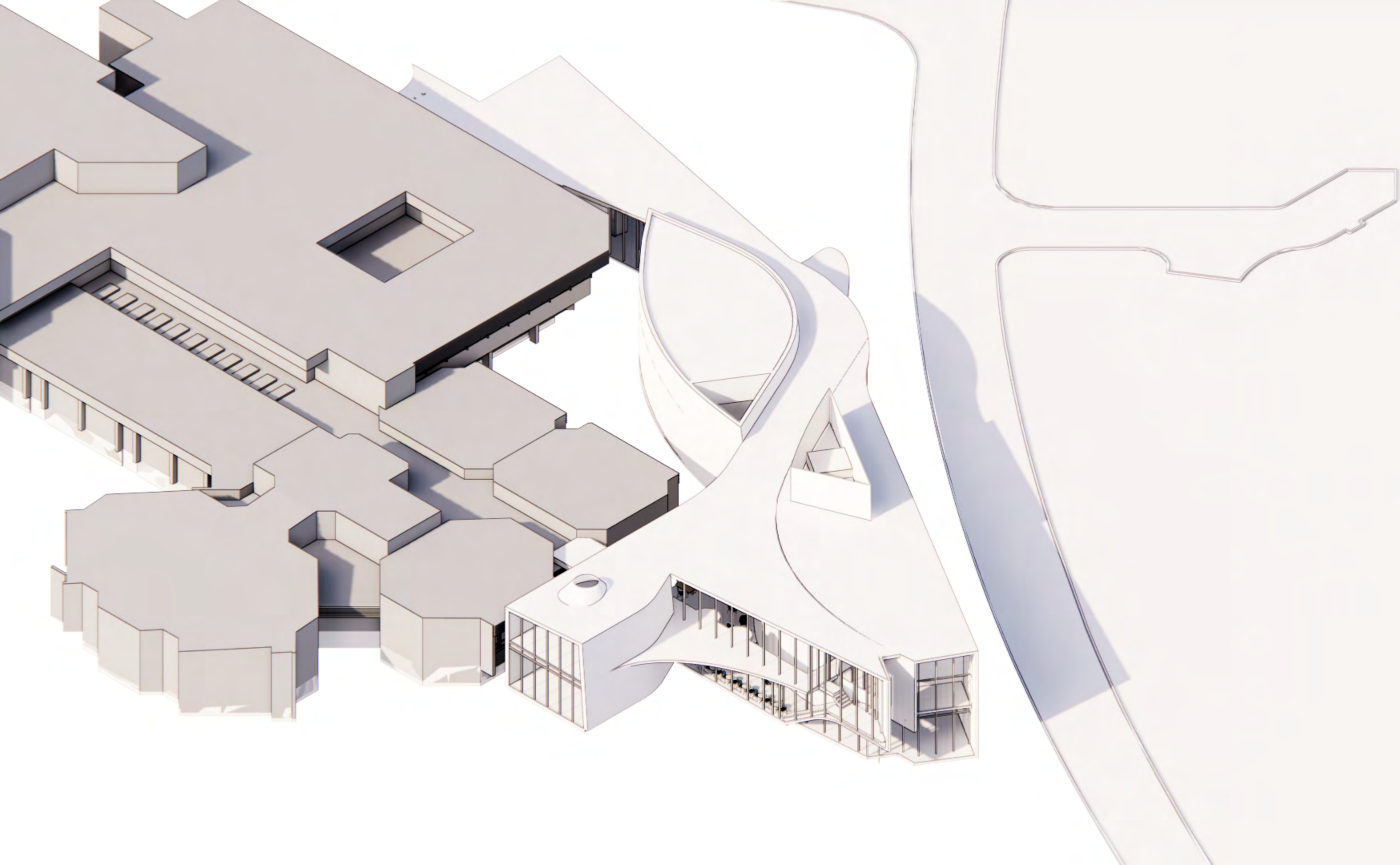














# RENDERINGS

## FROM FOREST





# RENDERINGS

## FROM RING ROAD







Gowlland Tod Provincial Park - Credit: Michal Klajban CC

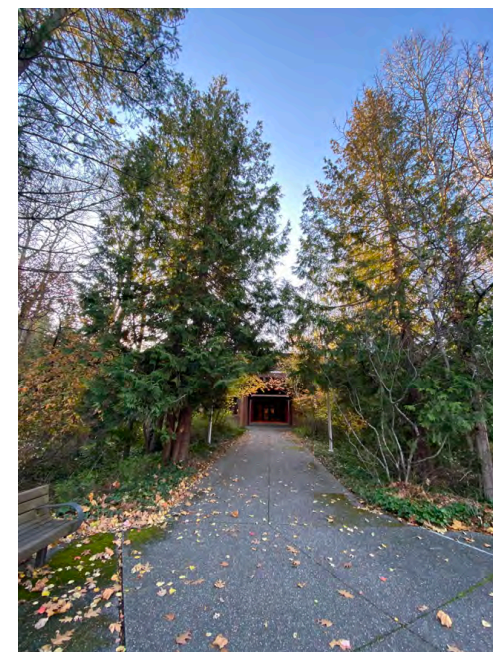
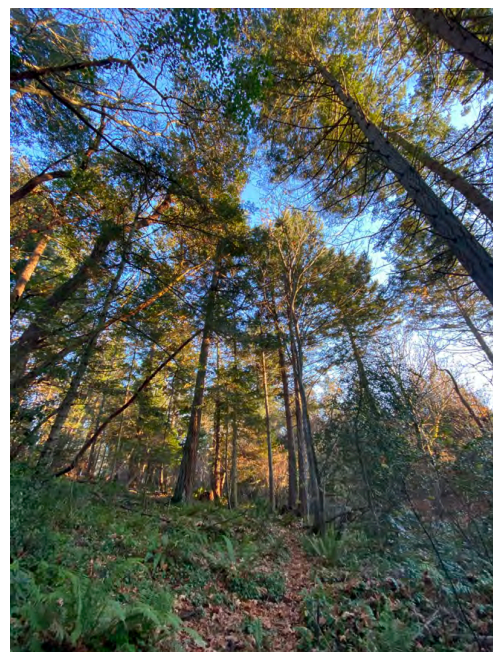
**UNIVERSITY OF VICTORIA**  
NATIONAL CENTRE FOR INDIGENOUS LAWS  
LANDSCAPE SCHEMATIC DESIGN  
2020-12-09



# TREE PROTECTION

## MAINTAINING THE FOREST

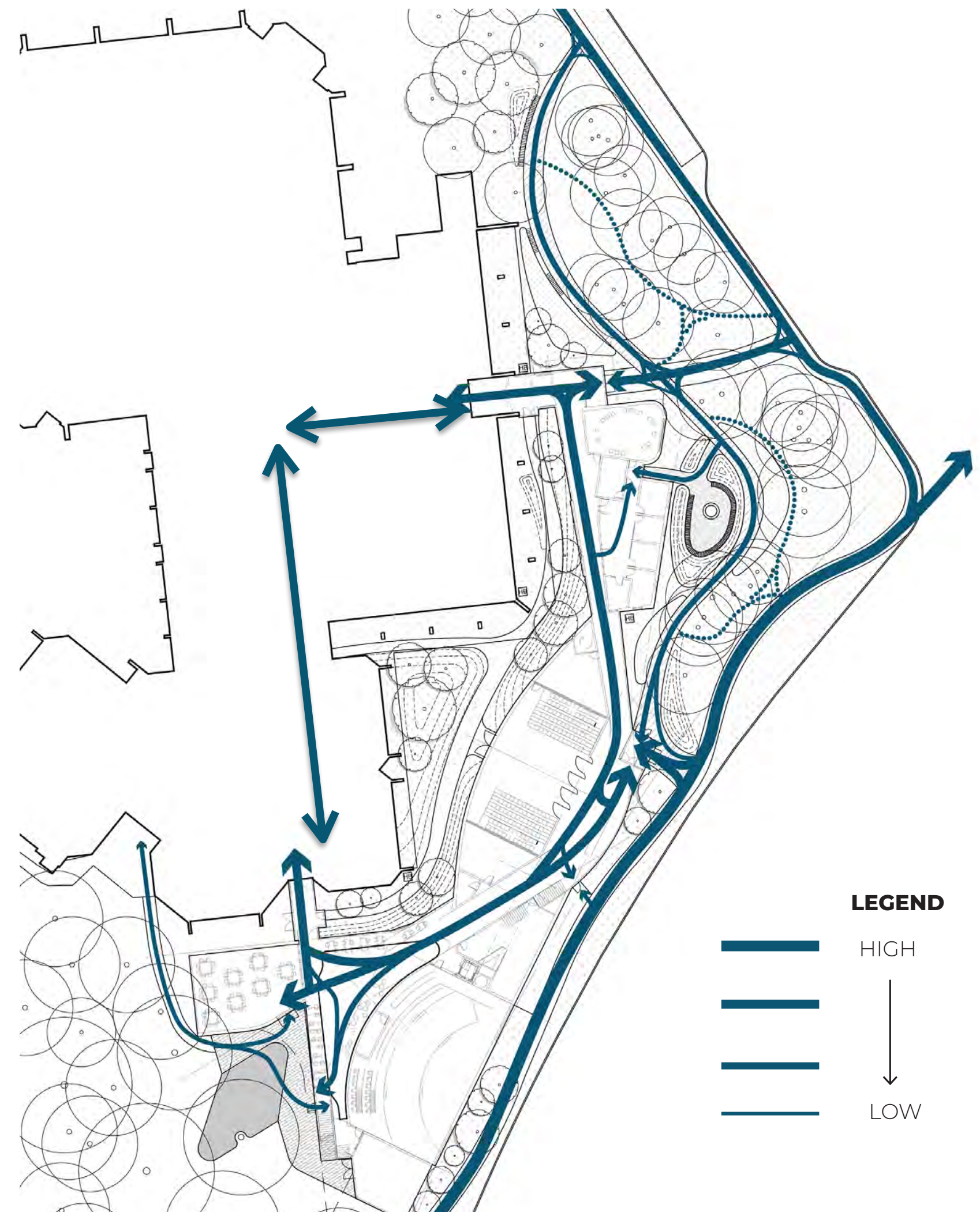
- A core principle of the project is to limit impacts to existing natural features including trees that are currently on the site.
- Existing trees provide a framework that the landscape program and circulation must respect and weave itself into.
- This approach is about creating complimentary spaces and working with what is given on site.





# PATHS AND STORYTELLING CIRCULATION

- Paths not only connect but have the potential to tell stories. The elements that you encounter along the way and how those elements relate to each other can relate or support narratives informed by Lekwungen stories.

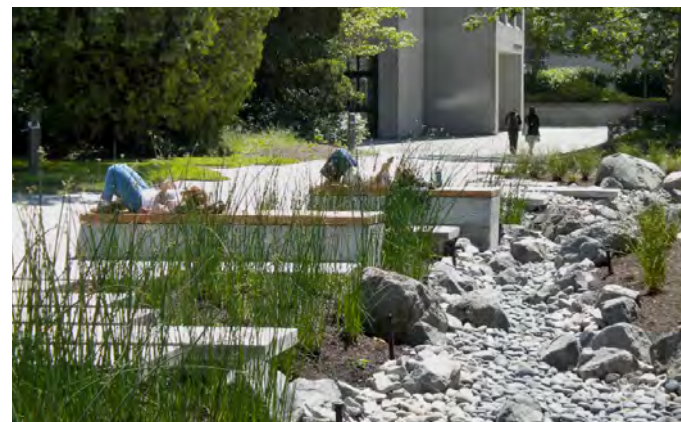




# WATER STORY

## CONNECTED STREAMS

- Water is a crucial element around which Lekwungen and Coast Salish life is oriented.
- The landscape design uses topography and site conditions to focus drainage and create rain gardens that wind along the central path.
- This provides greater access to the plants that grow within these landscapes and allows for the distribution of infiltration.





# PLANTING

## DIVERSITY AND EASE OF ACCESS

- Aspect, existing site conditions, and stormwater flows inform how planting will be arranged.
- Foster several different plant communities, each with unique characteristics that provide different opportunities for teaching and learning.
- Allow for cyclical harvesting so one area does not get over-harvested.

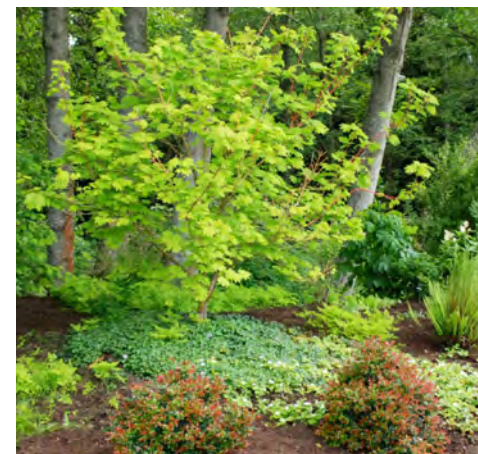
WET



SHADE



SUN



**LEGEND**





# INTERIOR FOREST CONDITION





# INTERIOR FOREST CONDITION





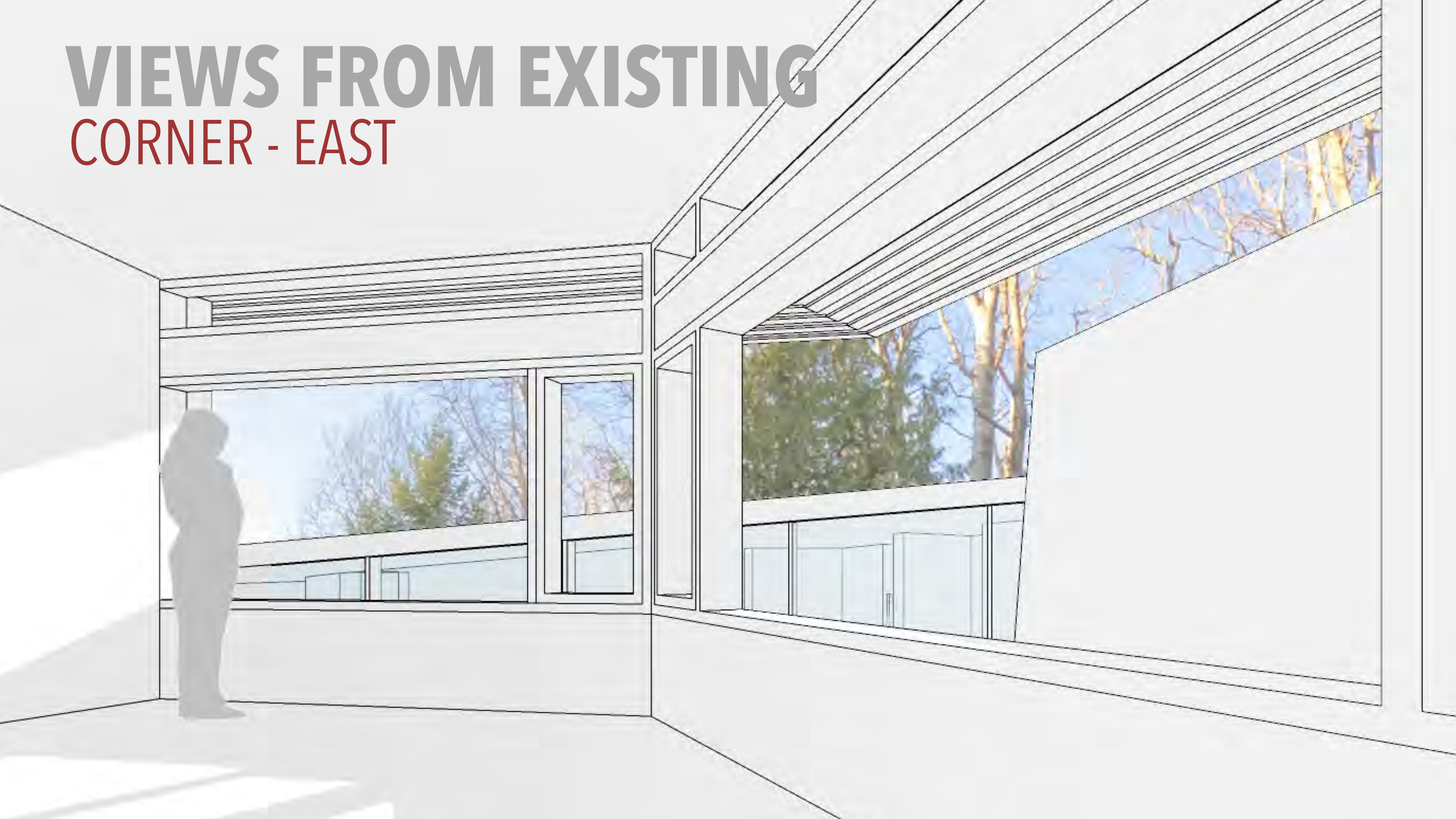
# VIEWS FROM EXISTING

## GROUND FLOOR SOUTH





# VIEWS FROM EXISTING CORNER - EAST





# VIEWS FROM EXISTING SECOND FLOOR OFFICE





# FACADES/CLADDING

## OPTIONS





# Breakout group

- Introductions
- Did we miss anything?
- What do you have questions about?
- What would you like us to consider as we refine the design?



University  
of Victoria



# Next Steps

- Meeting Goals
- Thank you for your feedback
- Future focus groups
- Engagement on detailed design Spring 2021



University  
of Victoria



# THANK YOU!

To provide feedback  
anytime:  
[planning@uvic.ca](mailto:planning@uvic.ca)

[Uvic.ca/fraserexpansion](https://Uvic.ca/fraserexpansion)



University  
of Victoria