



.1 Bike Racks

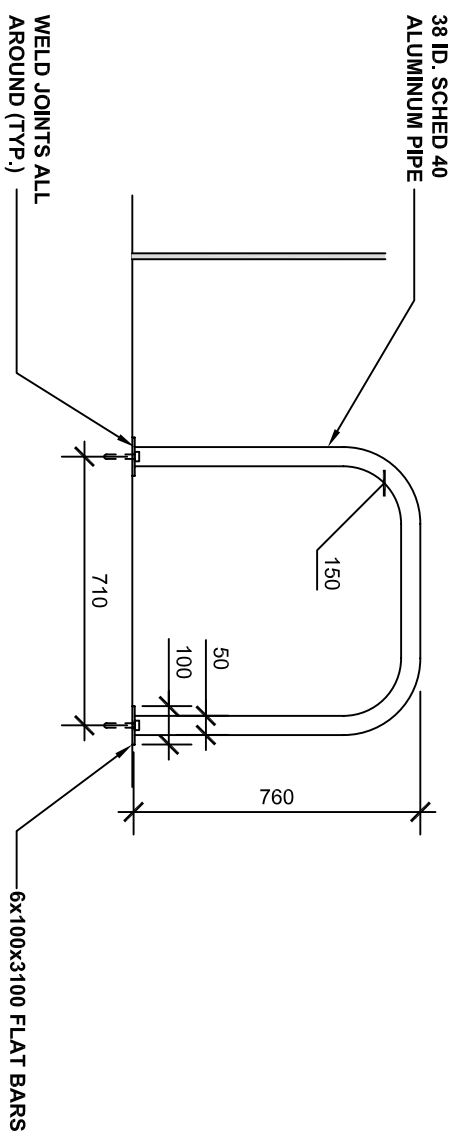
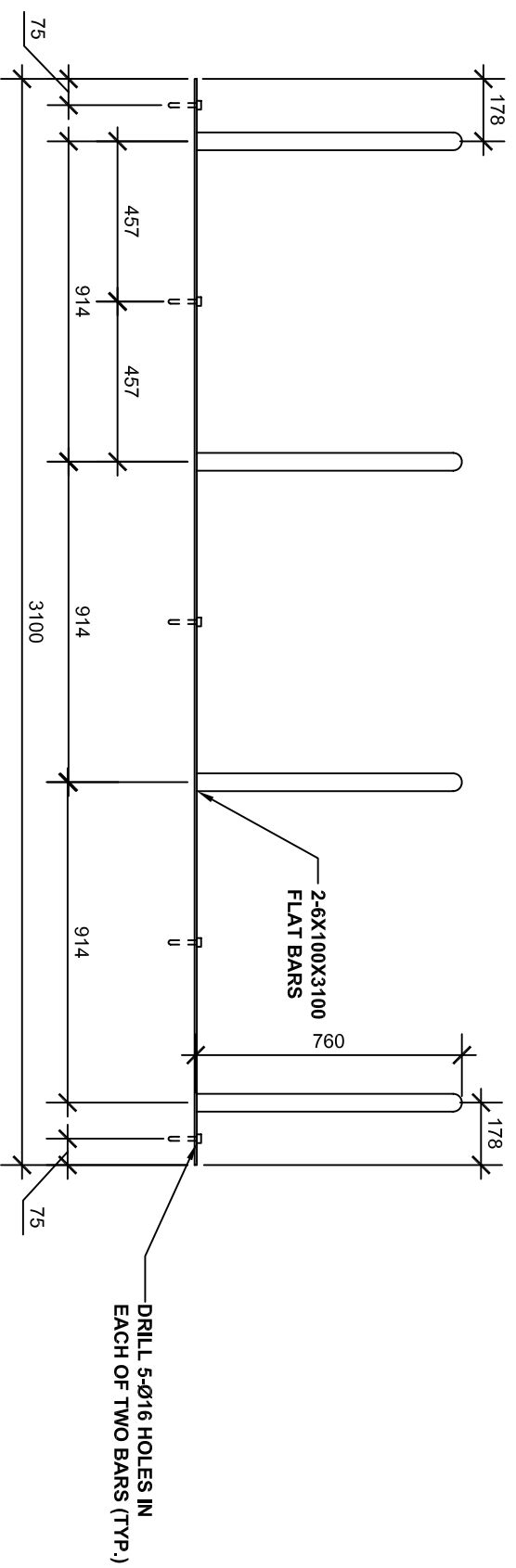
- .1 The University uses three types of manufactured bike racks. Refer to drawings immediately following this section.
 - .1 Type A – typical unrestricted placement
 - .2 Type B, with wheel stop – placement at 500mm against a wall or structure
 - .3 Type C, with wheel stop – placement at 275mm against a wall or structure.

.2 Bike and Motorcycle Canopy

- .1 UVic has developed standardized bicycle and motorcycle canopy structures. The number of bays and bay width may vary to suit site conditions. When necessary for site design, request canopy drawings from Project Officer.

.3 Waste Receptacles

- .1 Typical waste receptacles:
 - .1 Waste receptacles: 610x610x710mm high, exposed aggregate concrete containers, from Mackays Precast.
 - .2 Waste receptacles for buildings: Schaefer GMT Cart, from Rollins Machinery – 2 sizes:
 - .1 Grey 360L – 610 x 890 x 1010mm high,
 - .2 Blue or Brown 240L – 585 x 740 x 1070mm high.
- .2 Waste Receptacle Enclosures
 - .1 Provide screening such that waste bins are visible only from the direction of service vehicle approach.



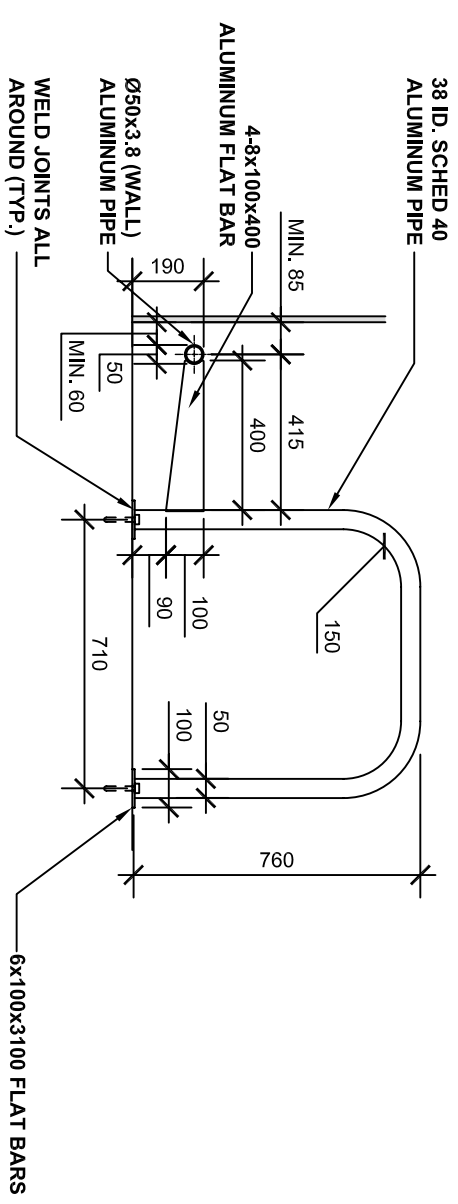
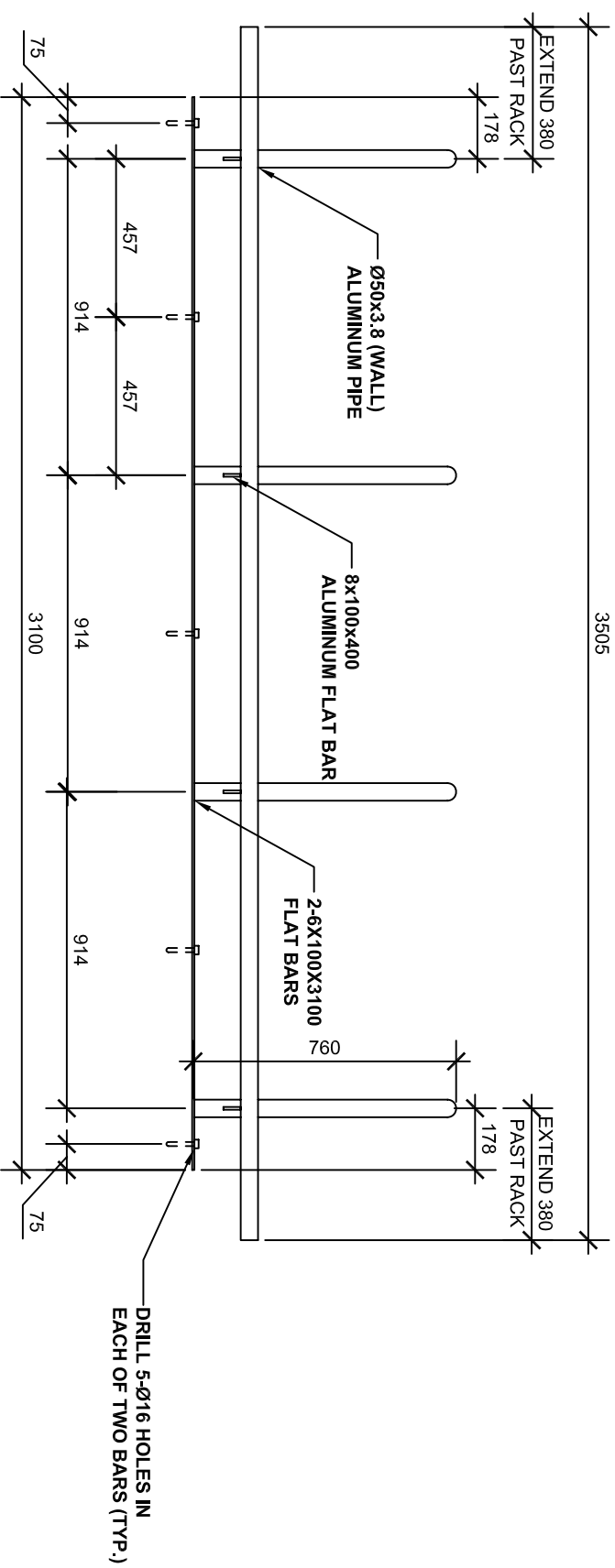
Notes:
 BEAD BLAST ENTIRE UNIT
 UPON COMPLETION



Facilities Management

Title:
 UVIC STANDARDS
 MANUFACTURED EXTERIOR
 SPECIALTIES
 BIKE RACK-TYPE A

Date: JULY 25, 2008
 Scale: 1:20
 Drawn By: FMGT
 Project Number:
 Drawing No. 1 OF 1



Notes:
 BEAD BLAST ENTIRE UNIT
 UPON COMPLETION

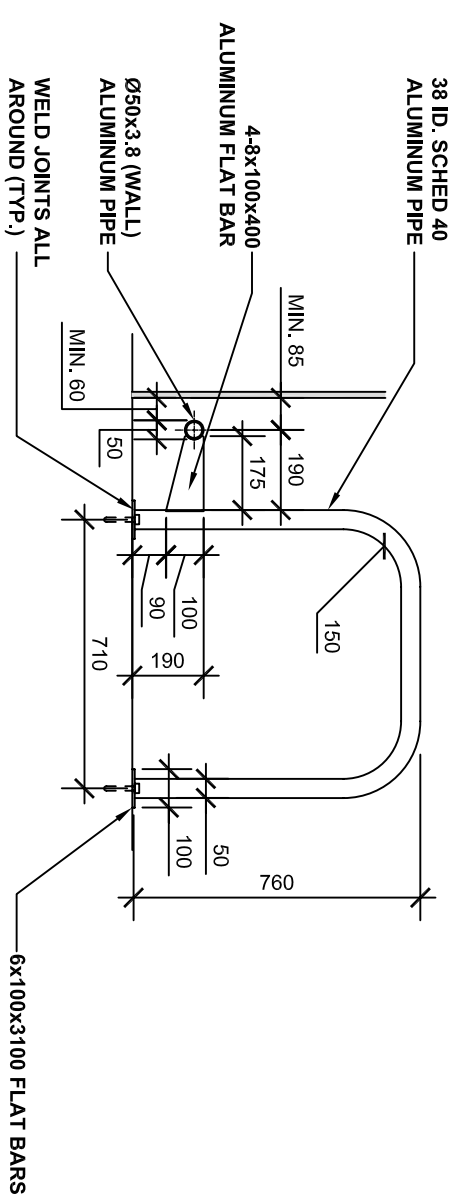
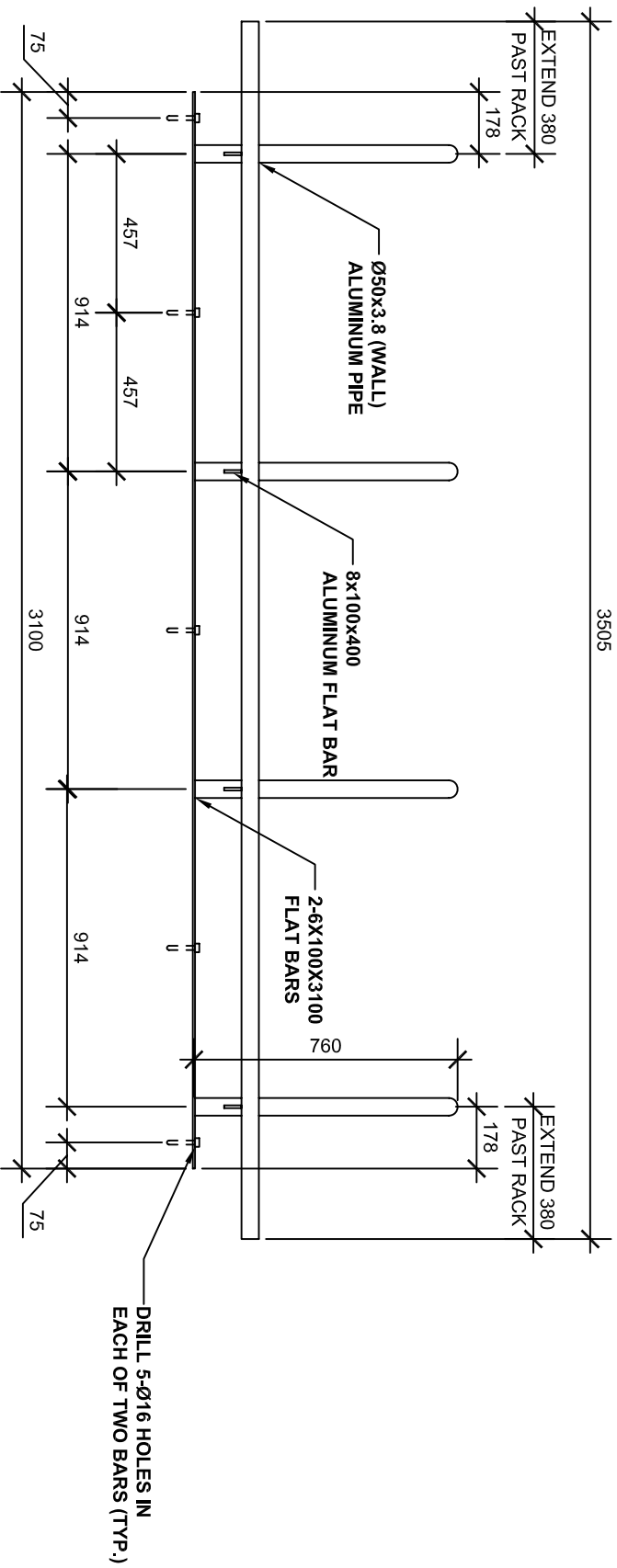


University
 of Victoria

Facilities Management

Title: UVIC STANDARDS
 MANUFACTURED EXTERIOR
 SPECIALTIES
 BIKE RACK-TYPE B

Date: JULY 25, 2008
 Scale: 1:20
 Drawn By: FMGT
 Project Number:
 Drawing No. 1 OF 1



Notes:
 BEAD BLAST ENTIRE UNIT
 UPON COMPLETION



Facilities Management

Title:
 UVIC STANDARDS
 MANUFACTURED EXTERIOR
 SPECIALTIES
 BIKE RACK-TYPE C

Date: JULY 25, 2008
 Scale: 1:20
 Drawn By: FMGT
 Project Number:
 Drawing No. 1 OF 1